



# SB1000

## Parts List



GBC IS AN ACCO BRANDS COMPANY

## 8.0 PARTS LIST

All parts in each illustration are keyed with an index number for reference to the respective part number and name in the respective parts list.

When ordering parts always include the following information:

1. Machine Model Number
2. Machine Serial Number
3. Part Number
4. Part Name
5. Quantity Required

**NOTE:** The Northbrook Service Parts Department does not stock all hardware; to avoid delays all standard hardware shown in this Parts List should be procured locally whenever possible.

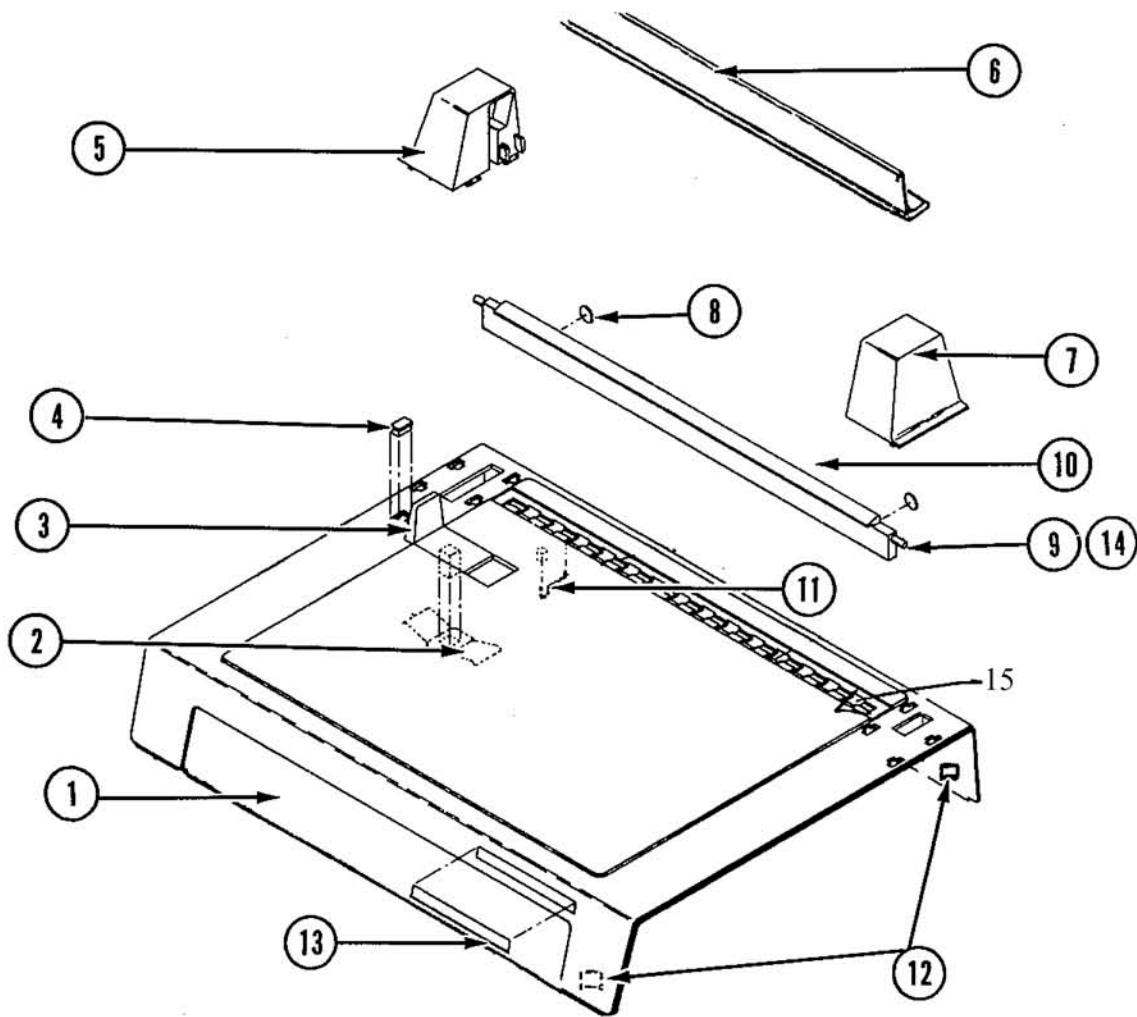


FIGURE 8.1

ITEM NUMBER	PART NUMBER	DESCRIPTION	QUANTITY	
			115 VAC	230 VAC
9778210	1	1132907 HOUSING. . . . .	1	1
9776954	2	1132913 PAPER GUIDE SPRING . . . . .	1	1
9778125	3	1132910 PAPER GUIDE. . . . .	1	1
9778433	4	1132914 LENS . . . . .	1	1
9779411	5	1132919 L.H. TURRET. . . . .	1	1
	6	1132959 BACK STOP. . . . .	1	1
9779415	7	1132920 R.H. TURRET. . . . .	1	1
9778772	8	1132815 SPACER PAD . . . . .	2	2
9776972	9	1132816 GROOVED PIN. . . . .	2	2
9776675	10	PRESSURE BAR . . . . .	1	1
9778682	11	1132912 LOCATOR PIN. . . . .	1	1
	12	1132909 MOUNTING BLOCK, FRONT. . . . .	2	2
1132908	12	MOUNTING BLOCK, REAR . . . . .	2	2
	13	1132922 LOGO . . . . .	1	1
9776950	14	1132915 SPEED NUT. . . . .	2	2
	15	9778208 Cover Strip		

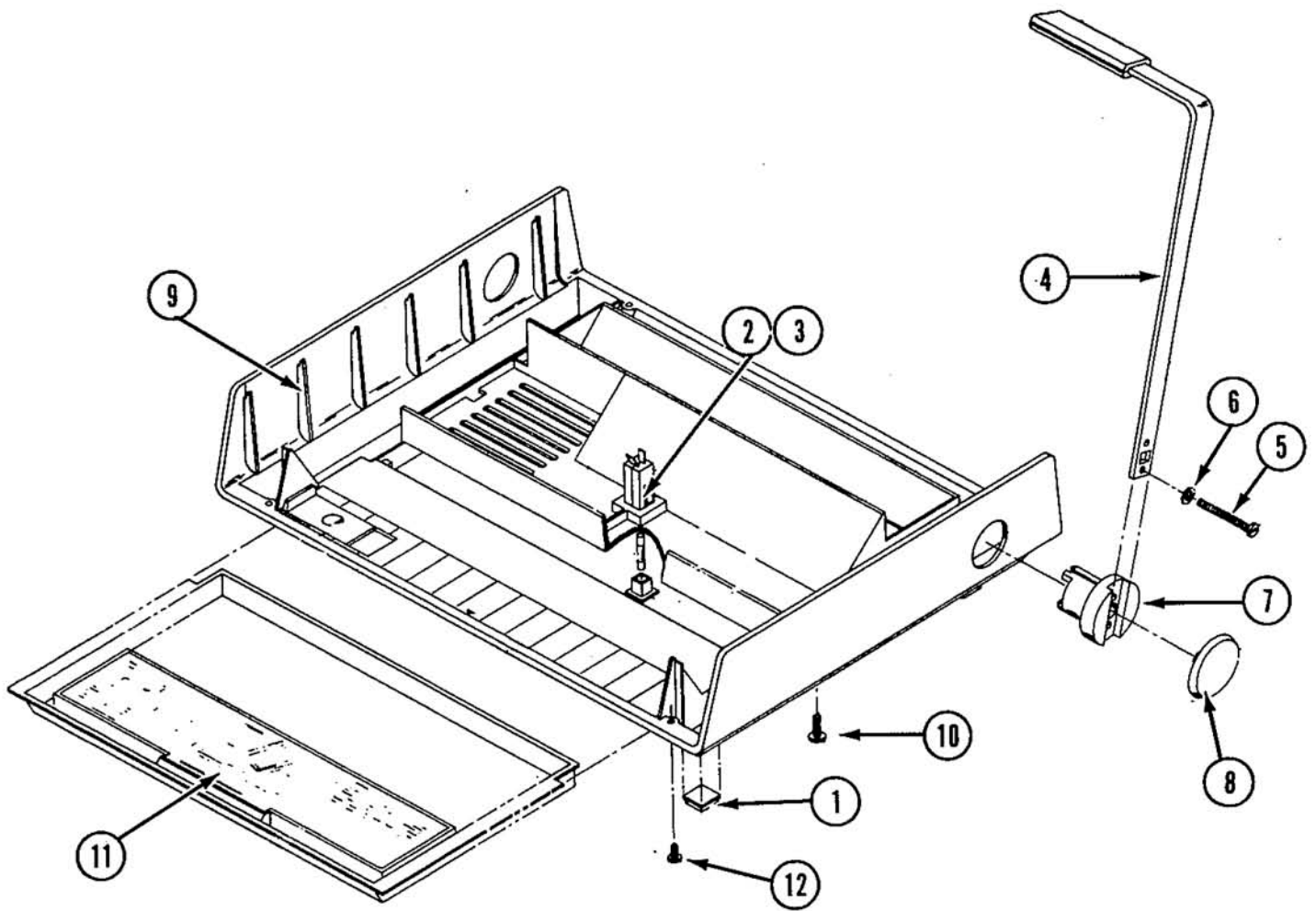


FIGURE 8.2

ITEM NUMBER	PART NUMBER	DESCRIPTION	QUANTITY	
			115 VAC	230 VAC
1	9778087	RUBBER FOOT. . . . .	4	4
2	1132960	FUSE HOLDER. . . . .	1	1
3	9778080	FUSE, 4 AMP. . . . .	1	1
4	9778204	HANDLE ASSY. . . . .	1	1
5	9779167	HANDLE SCREW . . . . .	4	4
6	9779923	LOCK WASHER. . . . .	4	4
7	9776796	DRIVE COUPLING . . . . .	2	2
8	9776826	HANDLE CAP . . . . .	2	2
9	9776671	BASE . . . . .	1	1
10	9779208	BASE SCREW . . . . .	4	4
11	1132924	WASTE TRAY . . . . .	1	1
12	1132918	HOUSING SCREW. . . . .	4	4

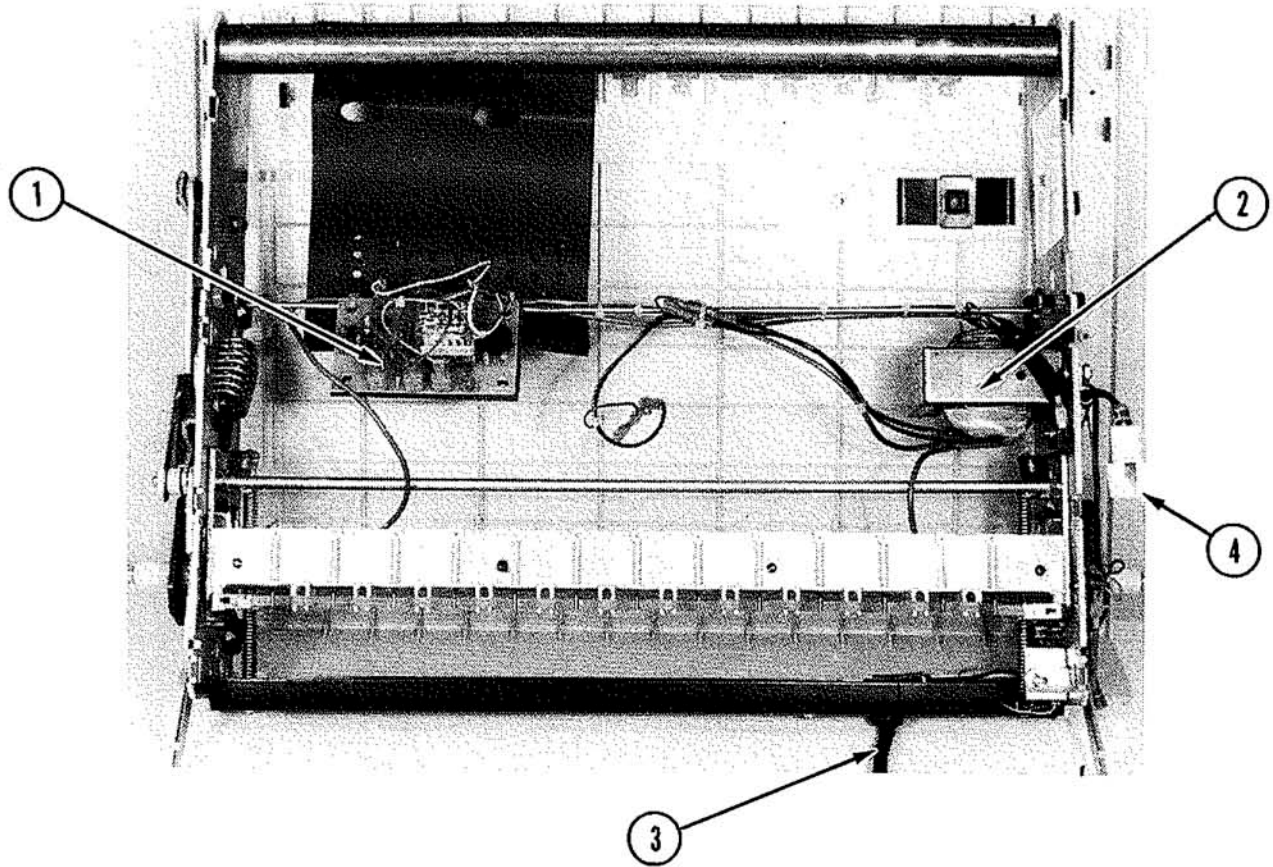


FIGURE 8.3

ITEM NUMBER	PART NUMBER	DESCRIPTION	QUANTITY	
			115 VAC	230 VAC
1	9779053	P. C. BOARD. . . . .	1	1
2	9781203	TRANSFORMER. . . . .	1	
2	9779400	TRANSFORMER. . . . .		1
3	9779960	POWER CORD . . . . .	1	
3	9779956	POWER CORD . . . . .		1
4	9778417	INDICATOR LIGHT. . . . .	1	
4	9778418	INDICATOR LIGHT. . . . .		1

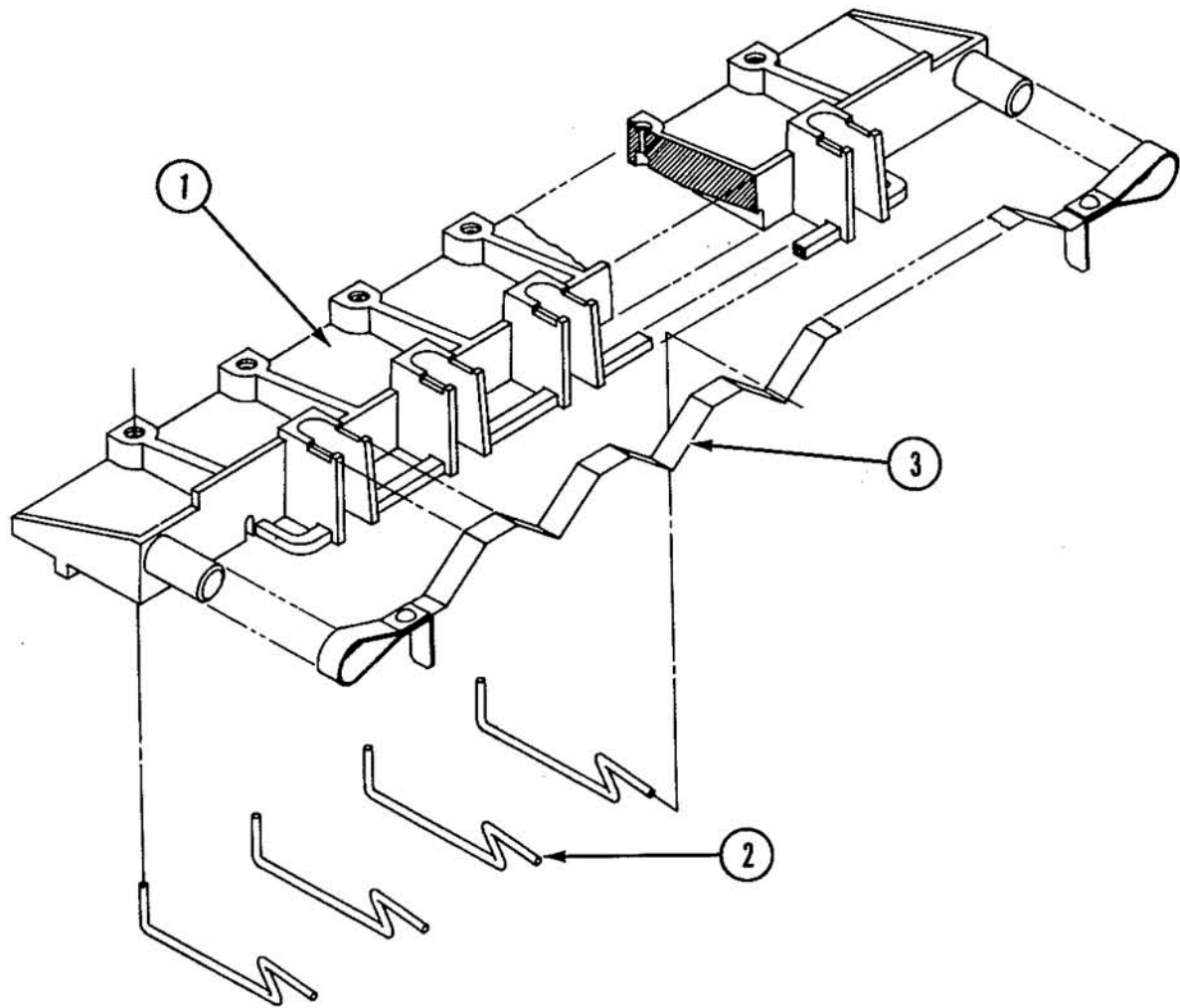


FIGURE 8.4

ITEM NUMBER	PART NUMBER	DESCRIPTION	QUANTITY	
			115 VAC	230 VAC
1	9777029	HEATER SUPPORT. . . . .	1	1
2	9779268	TENSIONER SPRING. . . . .	13	13
3		KNIFE BLADE ASSY. . . . .	1	1
	9781639	Strip Blade Assy.	1	1

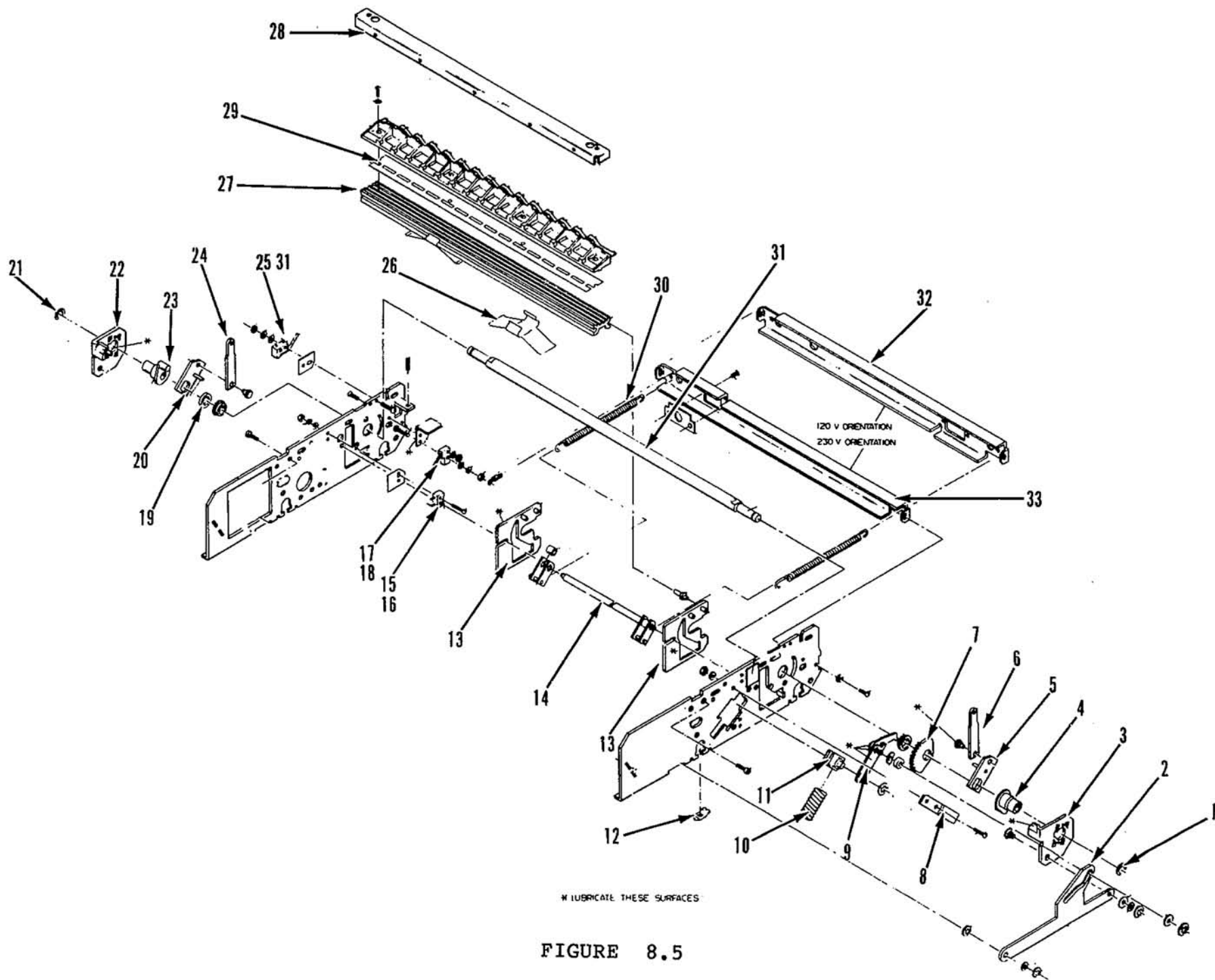


FIGURE 8.5

ITEM NUMBER	PART NUMBER	DESCRIPTION	QUANTITY		
			115 VAC	230 VAC	
9779076	1	1132876	RETAINING RING. . . . .	1	1
9776356	2	1132890	ACTUATOR. . . . .	1	1
9778449	3	1132891	DRIVE LINK. RH. . . . .	1	1
9778198	4	1132829	HUB . . . . .	1	1
9778458	5	1132949	SHAFT LINK ASSY . . . . .	1	1
9778458	6	9778457 1132950	PRESSURE BAR LINK . . . . .	1	1
9779086	7	1132951	RATCHET . . . . .	1	1
1132876	8	1132952	LINK BRACE. . . . .	1	1
9778773	9	1132868	PAWL ASSY . . . . .	1	1
9779270	10	1132871	COMPRESSION SPRING. . . . .	1	1
9779351	11	1132981	PIVOT STUD. . . . .	1	1
9778607	12	1132867	SPEED NUT . . . . .	2	2
	13	1132836	DRIVE PLATE . . . . .	2	2
9779242	14	1132879	TIMING SHAFT ASSY . . . . .	1	1
9779315	15	1132846	SWITCH. . . . .	1	1
9776357	16	1132841	SWITCH ACTUATOR . . . . .	1	1
9779315	17	1132846	SWITCH. . . . .	1	1
9776359	18	1132844	SWITCH ACTUATOR . . . . .	1	1
9779251	19	1132894	SPACER. . . . .	1	1
9778457	20	1132943	SHAFT LINK ASSY . . . . .	1	1
1132876	21	1132953	RETAINING RING. . . . .	1	1
9778450	22	1132831	LEFT HAND DRIVE LINK. . . . .	1	1
9778198	23	1132829	HUB . . . . .	1	1
9778458	24	9778457 1132950	PRESSURE BAR LINK . . . . .	1	1
9779315	25	1132846	SWITCH. S-2 . . . . .	1	1
9779281	26	1132954	SUPPORT SPRING. . . . .	2	2
	27	1132942	SUPPORT ASSY. . . . .	1	1
9776666	28	1132923	FRAME BRACE . . . . .	1	1
1133058	29		INSULATOR . . . . .	1	1
9779269	30	1132956	EXTENSION SPRING. . . . .	2	2
	31	1132957	Actuator . . . . .	1	1
	32	1132958	BRACE . . . . .	1	1
		9776359	Switch Actuator		