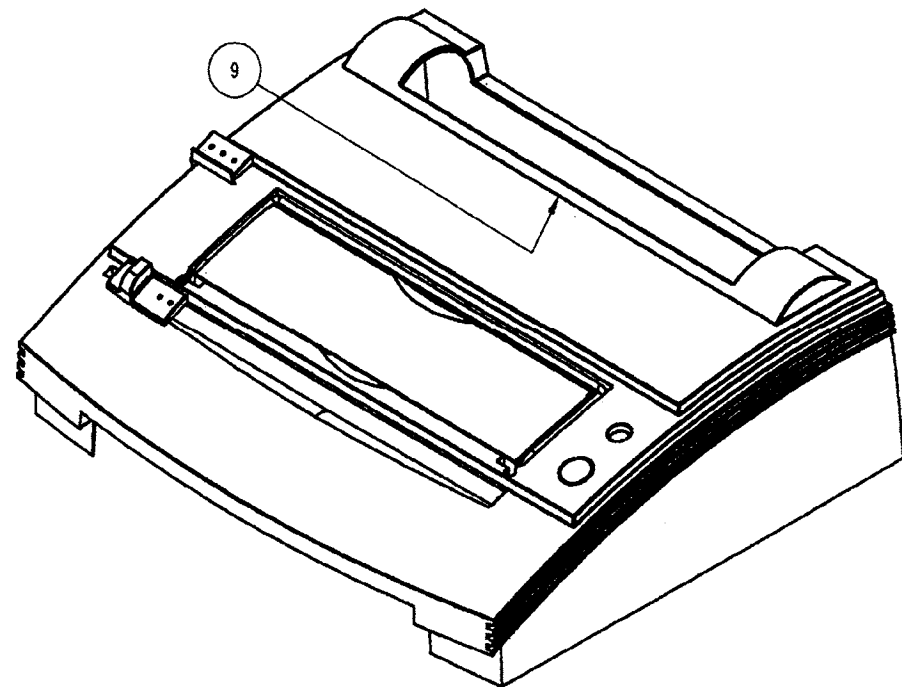
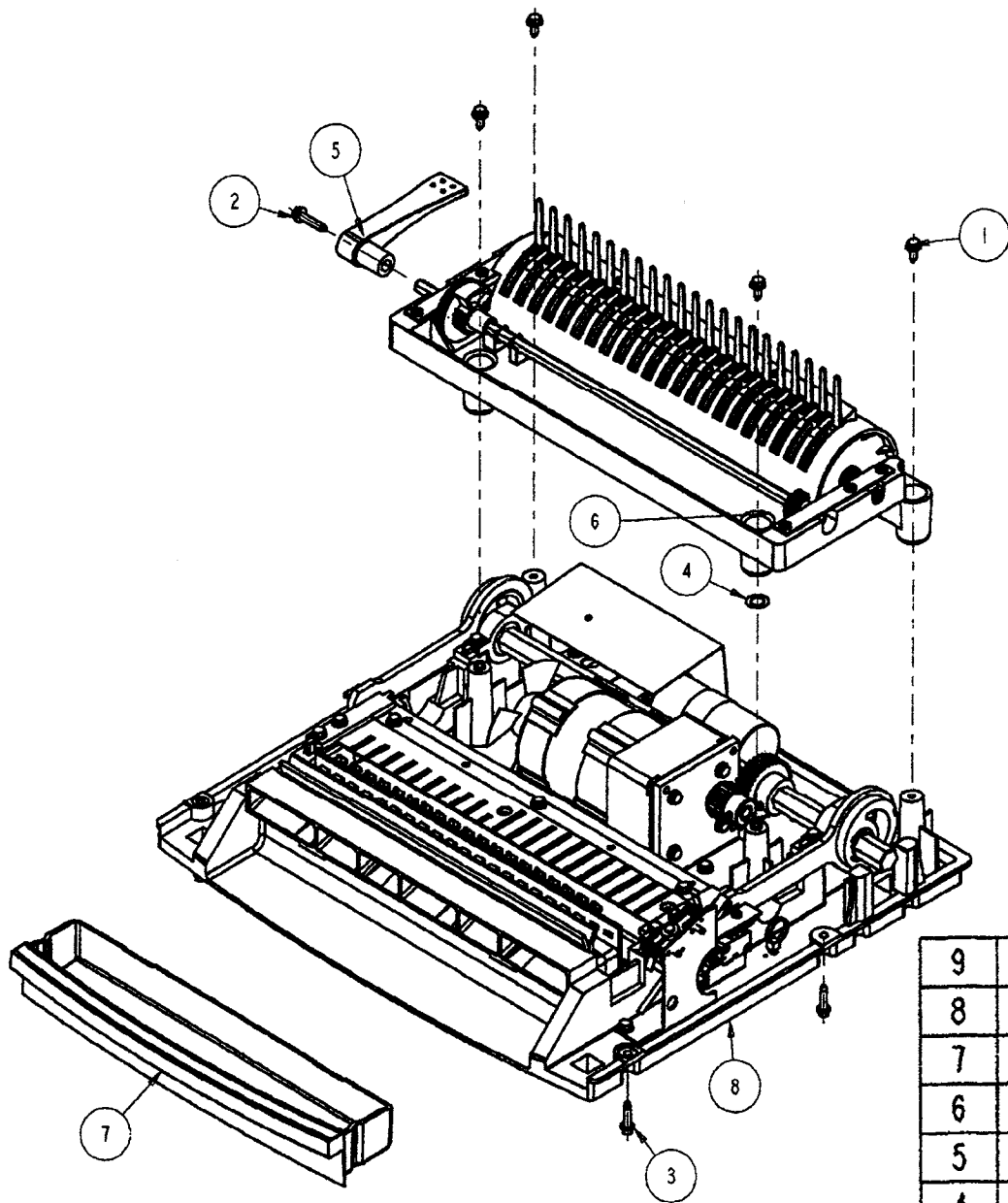




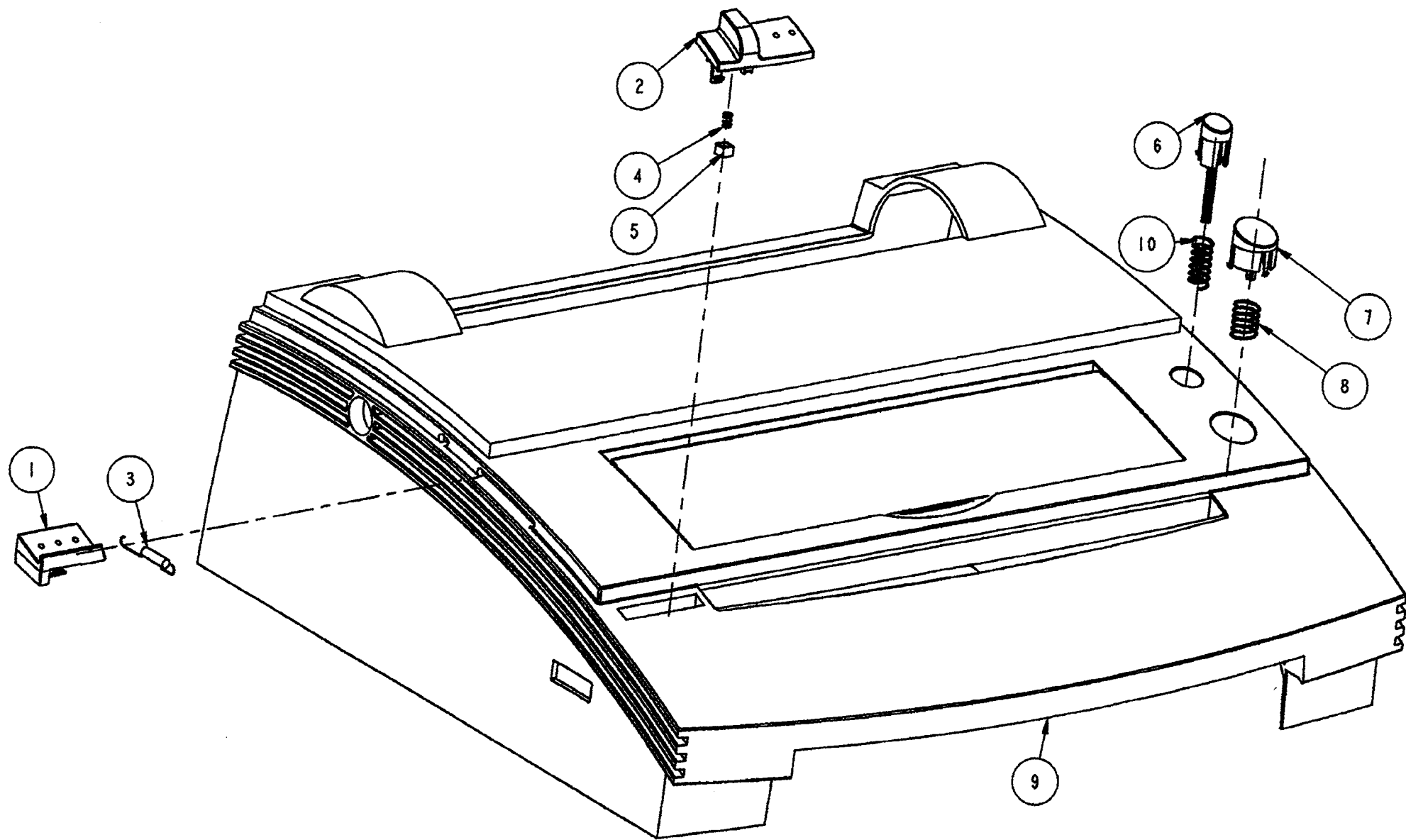
# P300 Parts List



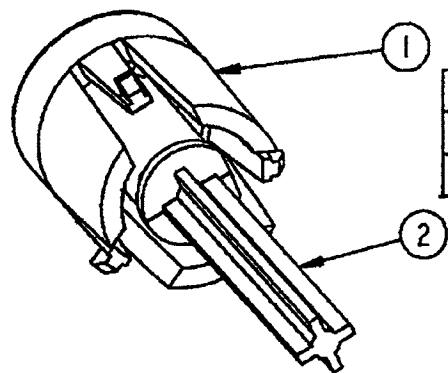
GBC IS AN ACCO BRANDS COMPANY



|      |          |                                  |      |
|------|----------|----------------------------------|------|
| 9    | 7703603  | HOUSING ASSEMBLY                 | 1    |
| 8    | 7703602  | PUNCH ASSEMBLY                   | 1    |
| 7    | 7703570  | CHIP TRAY                        | 1    |
| 6    | 7703564  | BINDER ASM                       | 1    |
| 5    | 7703536  | BIND HANDLE                      | 1    |
| 4    | 1925140  | WASHER                           | 1    |
| 3    | 1911001  | 10-32 X 3/4 SEMS WSH SKT HD SCR  | 4    |
| 2    | 1907406  | 10-32X1 SEMS HX WSH HD SCR       | 1    |
| 1    | 1907105  | 10-32x1/2 SEMS HX WSH HD TAP SCR | 4    |
| ITEM | PART NO. | DESCRIPTION                      | QTY. |



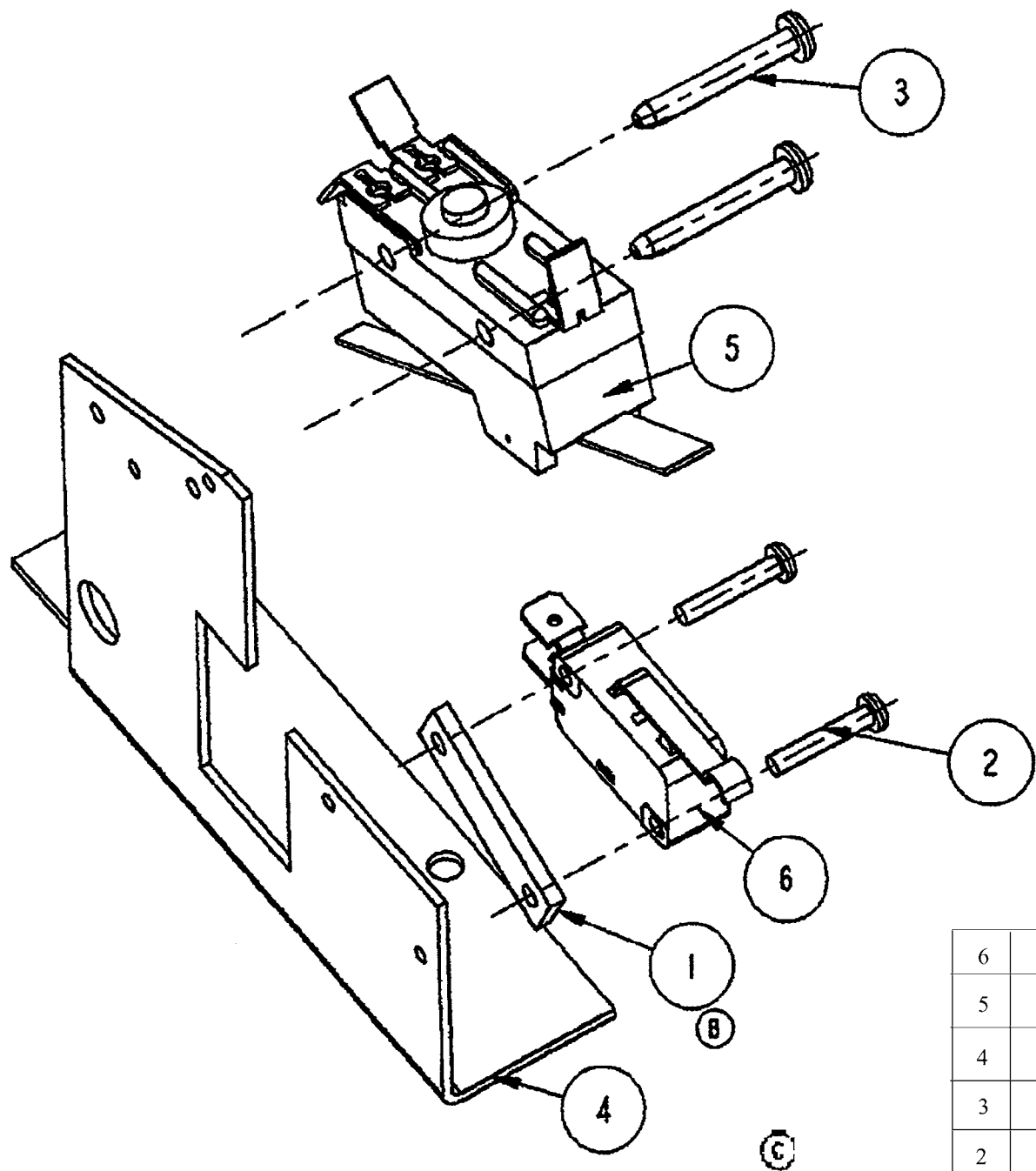
|             |                 |                              |             |
|-------------|-----------------|------------------------------|-------------|
| 10          | 7703649         | SPRING_REVERSE SWITCH BUTTON | 1           |
| 9           | 7703637         | HOUSING, FINISHED            | 1           |
| 8           | 7703629         | SPRING_PUNCH SWITCH BUTTON   | 1           |
| 7           | 7703628         | PUNCH SWITCH BUTTON          | 1           |
| 6           | 7703617         | REVERSE BOTTOM ASSY          | 1           |
| 5           | 7703578         | SLIDE, EDGE GUIDE            | 1           |
| 4           | 7703577         | SPRING, EDGEGUIDE            | 1           |
| 3           | 7703575         | SPRING, BINDER SIZER         | 1           |
| 2           | 7703574         | EDGE GUIDE                   | 1           |
| 1           | 7703573         | BINDER SIZER                 | 1           |
| <b>ITEM</b> | <b>PART NO.</b> | <b>DESCRIPTION</b>           | <b>QTY.</b> |



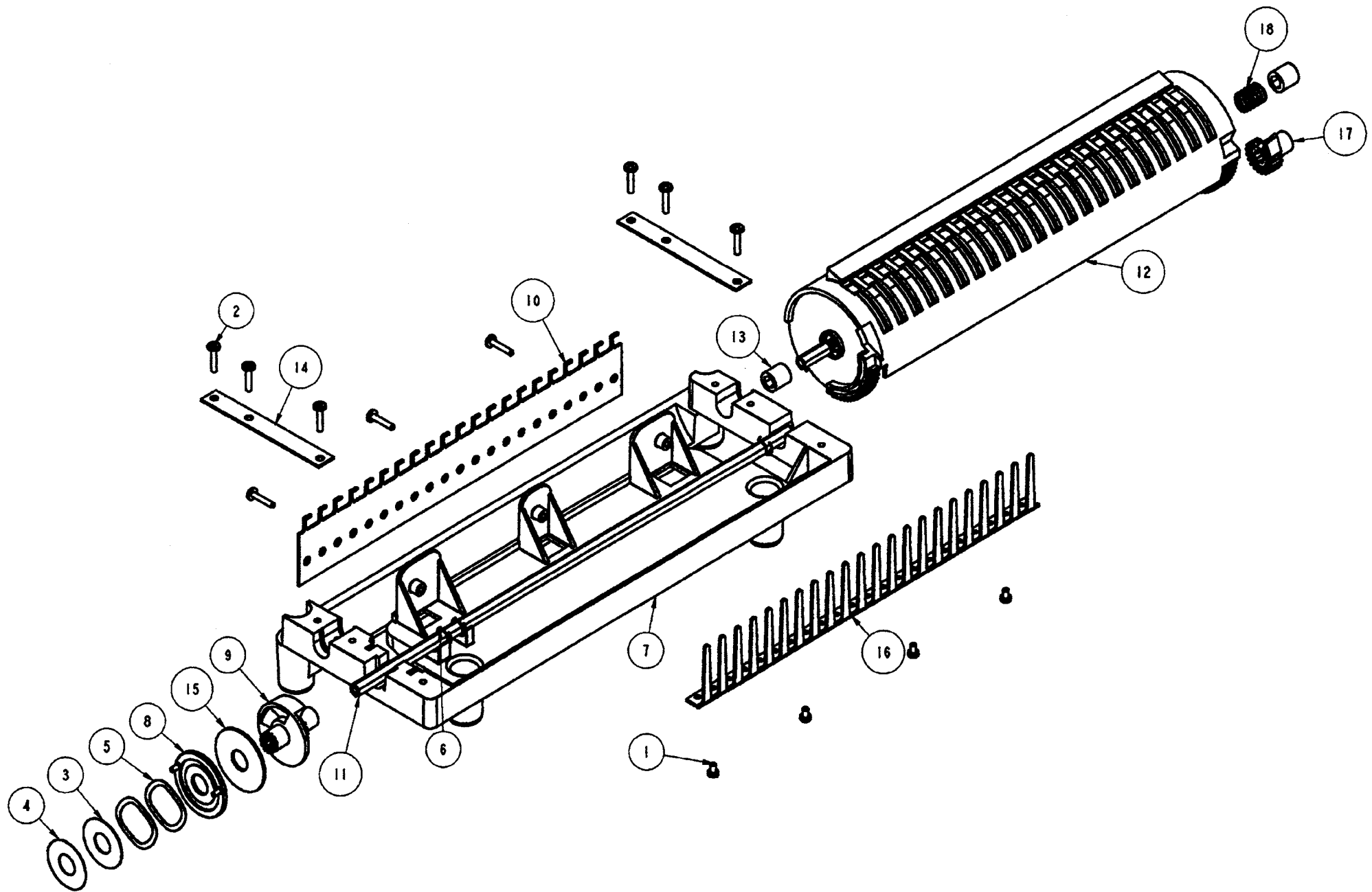
|      |          |                            |      |
|------|----------|----------------------------|------|
| 2    | 7703648  | STEM_REVERSE SWITCH BUTTON | 1    |
| 1    | 7703647  | REVERSE SWITCH BUTTON      | 1    |
| ITEM | PART NO. | DESCRIPTION                | QTY. |



|             |                 |                                     |             |
|-------------|-----------------|-------------------------------------|-------------|
| 29          | 7703655         | BRACKET, ELECTRICAL PANEL           | 1           |
| 28          | 7703641         | ACTUATOR ARM                        | 1           |
| 27          | 7703639         | ELECTRICAL SHIELD                   | 1           |
| 26          | 7703634         | DIESET ASSEMBLY                     | 1           |
| 25          | 7703631         | DRIVE GEAR 35T                      | 1           |
| 24          | 7706057         | SHAFT                               | 1           |
| 23          | 7703614         | MOTOR ASM. -115V                    | 1           |
| 22          | 7703607         | PUNCH BRACKET ASM.                  | 1           |
| 21          | 7703549         | STRIPPER                            | 1           |
| 20          | 7703548         | BEARING                             | 2           |
| 19          | 7703547         | ECCENTRIC                           | 2           |
| 18          | 7703544         | CONNECTING LINK                     | 2           |
| 17          | 7703542         | BASE, PUNCH                         | 1           |
| 16          | 7703541         | BEARING CAP                         | 2           |
| 15          | 7703540         | SLIDE                               | 2           |
| 14          | 7703538         | PRESSURE BAR                        | 1           |
| 13          | 6205041         | BRACKET, CAPACITOR 45mm             | 1           |
| 12          | 6205037         | CAPACITOR, MOTOR 25mf               | 1           |
| 11          | 6190015         | RECEPTACLE, LINE CORD               | 1           |
| 10          | 1932123         | WIRE TIE                            | 3           |
| 9           | 1930554         | E-CLIP                              | 2           |
| 8           | 1930251         | HAIR PIN CLIP                       | 2           |
| 7           | 1929603         | PLASTIC RIVET                       | 2           |
| 6           | 1907805         | 6-32x1/4 PAN HD TAP SCREW           | 1           |
| 5           | 1907411         | 10-32x2 1/4 SEMS HX WSH HD MACH SCR | 5           |
| 4           | 1907105         | 10-32x1/2 SEMS HX WSH HD TAP SCR    | 10          |
| 3           | 1907103         | 10-32x1 SEMS HX WSH HD TAP SCR      | 8           |
| 2           | 1907102         | 10-32 X 11/16 HX WSH HD TAP SCR     | 4           |
| 1           | 1900026         | SET SCREW                           | 1           |
| <b>ITEM</b> | <b>PART NO.</b> | <b>DESCRIPTION</b>                  | <b>QTY.</b> |

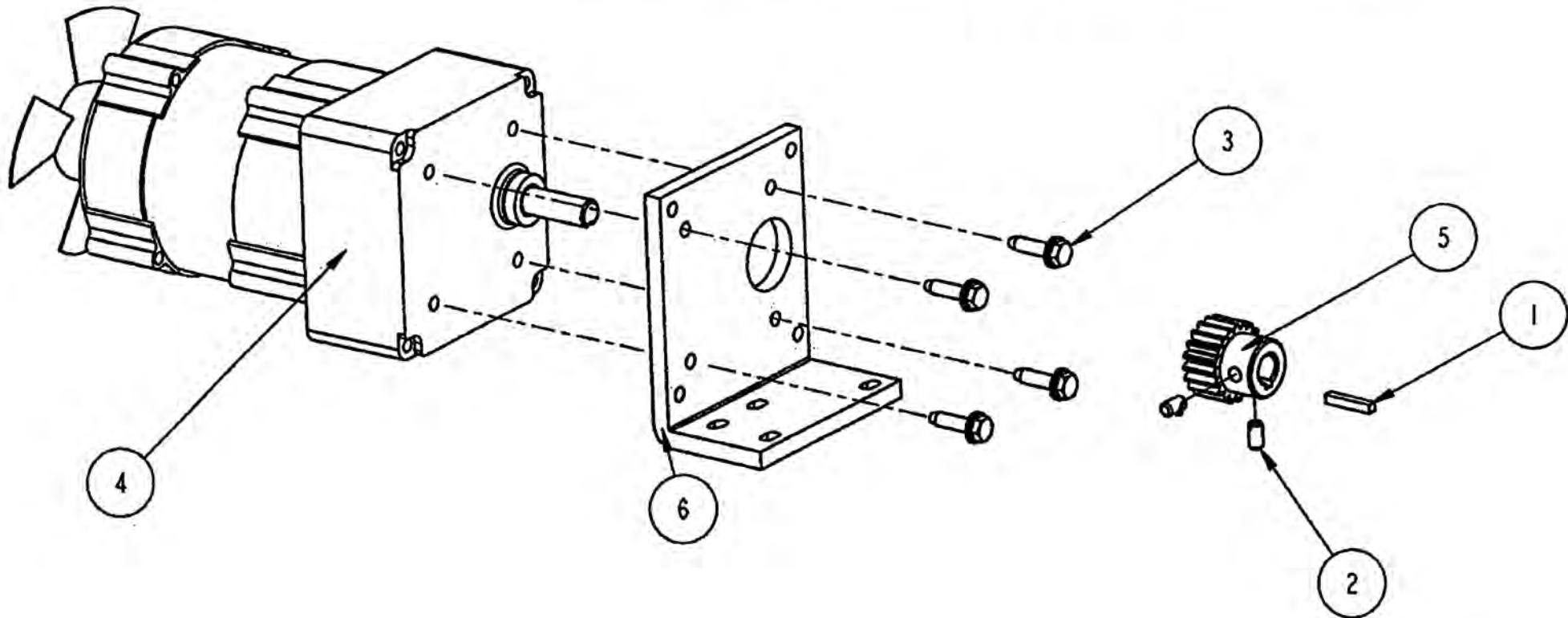


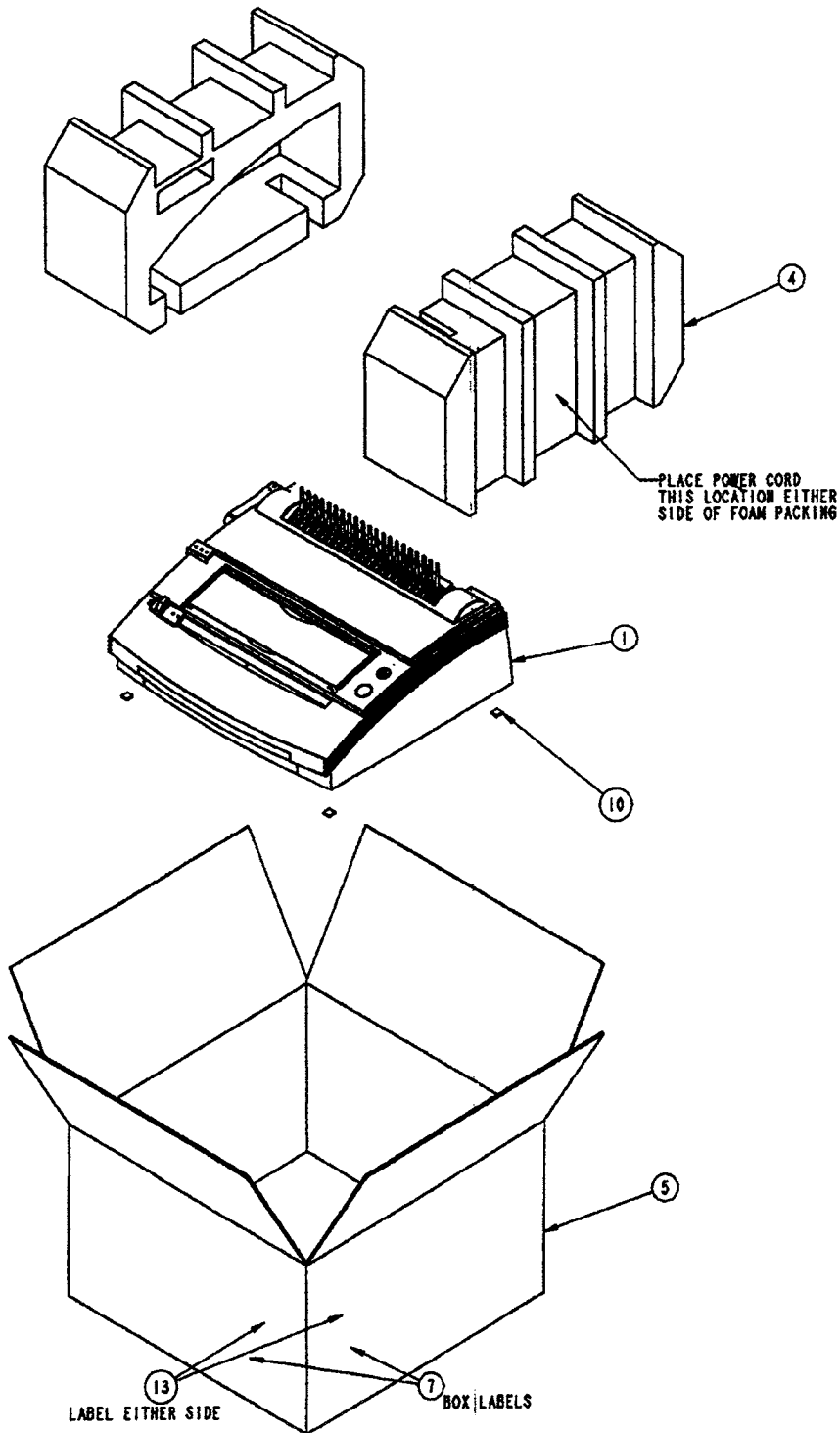
|      |          |                            |     |
|------|----------|----------------------------|-----|
| 6    | 7703640  | MICRO SWITCH               | 1   |
| 5    | 7703638  | PUNCH SWITCH               | 1   |
| 4    | 7703608  | BRACKET, PUNCHSWITCH       | 1   |
| 3    | 1907840  | SCR 6-32 X 1 PAN HD TAP    | 2   |
| 2    | 1902834  | SCR 4- 40 X 5 / 8 PAN HEAD | 2   |
| 1    | 1118972  | RELEASE SWITCH SPACER      | 1   |
| ITEM | PART NO. | DESCRIPTION                | QTY |



|             |                 |                             |             |
|-------------|-----------------|-----------------------------|-------------|
| 18          | 7703629         | SPRING_PUNCH SWITCH BUTTON  | 1           |
| 17          | 7703581         | IDLER GEAR                  | 1           |
| 16          | 7703576         | COMB                        | 1           |
| 15          | 7703566         | FRICTION DISC               | 1           |
| 14          | 7703563         | STRAP                       | 2           |
| 13          | 7703562         | GUIDE BEARING               | 2           |
| 12          | 7703560         | SHROUD                      | 1           |
| 11          | 7703558         | DRIVE GEAR SHAFT            | 1           |
| 10          | 7703557         | HOOK PLATE                  | 1           |
| 9           | 7703556         | CAM GEAR                    | 1           |
| 8           | 7703555         | FRICTION PLATE              | 1           |
| 7           | 7703554         | BIND BASE                   | 1           |
| 6           | 1930514         | E-CLIP                      | 3           |
| 5           | 1926510         | WAVY WASHER                 | 2           |
| 4           | 1925159         | WASHER                      | 1           |
| 3           | 1925158         | WASHER                      | 1           |
| 2           | 1901206         | 8-16 SCREW, THREAD ROLLING  | 9           |
| 1           | 1901202         | SCR 6-18 X 1/4 PHILL PAN HD | 4           |
| <b>ITEM</b> | <b>PART NO.</b> | <b>DESCRIPTION</b>          | <b>QTY.</b> |

|      |          |                              |      |
|------|----------|------------------------------|------|
| 6    | 7703635  | BRACKET, MOTOR               | 1    |
| 5    | 7703699  | PINION GEAR 20T              | 1    |
| 4    | 7703614  | MOTOR                        | 1    |
| 3    | 1907404  | 10-32-3/4 SEMS HX WSH HD SCR | 4    |
| 2    | 1900026  | SET SCREW                    | 2    |
| 1    | 1852815  | KEY                          | 1    |
| ITEM | PART NO. | DESCRIPTION                  | QTY. |





| 13.      | 6009242  | NRTL/C SHIPPING LABL      | 1    |
|----------|----------|---------------------------|------|
| 12.      | 6009078  | CSA NRTL/C LABEL          | 1    |
| 11.      | 6009146  | LABEL SHOCK DOM           | 1    |
| 10.      | 7703552  | FOOT                      | 4    |
| 9.       | 1155022  | WARRANTY CRDS 90DAY       | 1    |
| 8.       | 7703654  | OPERATING INSTR. P400     | 1    |
| 7.       | 1155024  | MAST. LISTNG NAMEPLATE    | 1    |
| 6.       | 1963141  | S* TAPE 2" X 3000' PK     | 5    |
| 5.       | 7703679  | CARTON, P400              | 1    |
| 4.       | 7703580  | FOAM END CAP, NOPASET     | 1    |
| 3.       | 6190011  | AIR ACTUATOR (FOOT PEDAL) | 1    |
| 2.       | 6200001  | CORD SET-115V             | 1    |
| 1.       | 7703651  | DB P400 FIN. ASY. 115V    | 1    |
| ITEM NO. | PART NO. | DESCRIPTION               | QTY. |