

---

# Orca I SP Parts Publication

© April 1999 GBC Pro - Tech  
Do not duplicate without written permission.

---



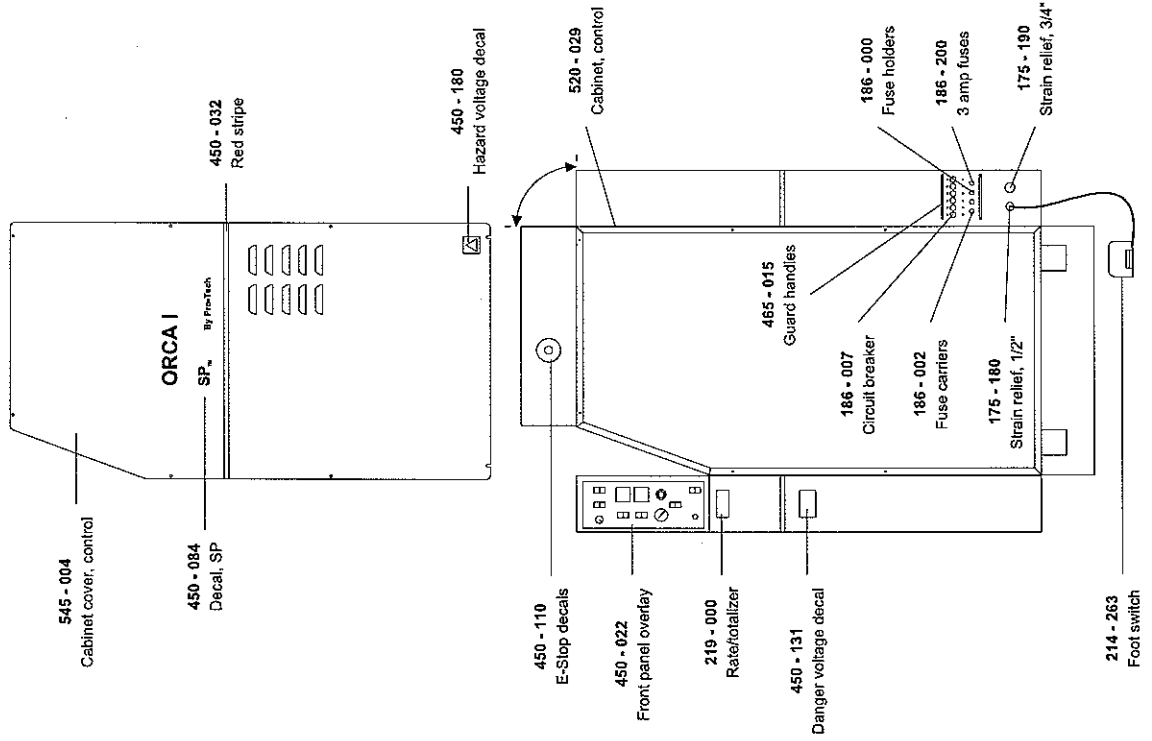
Revision: April 1999  
Part number: N/A

GBC Pro - Tech  
4151 Anderson Road  
DeForest, WI 53532  
Ph: ( 608 ) 246 - 8844  
Fx: ( 608 ) 246 - 8645

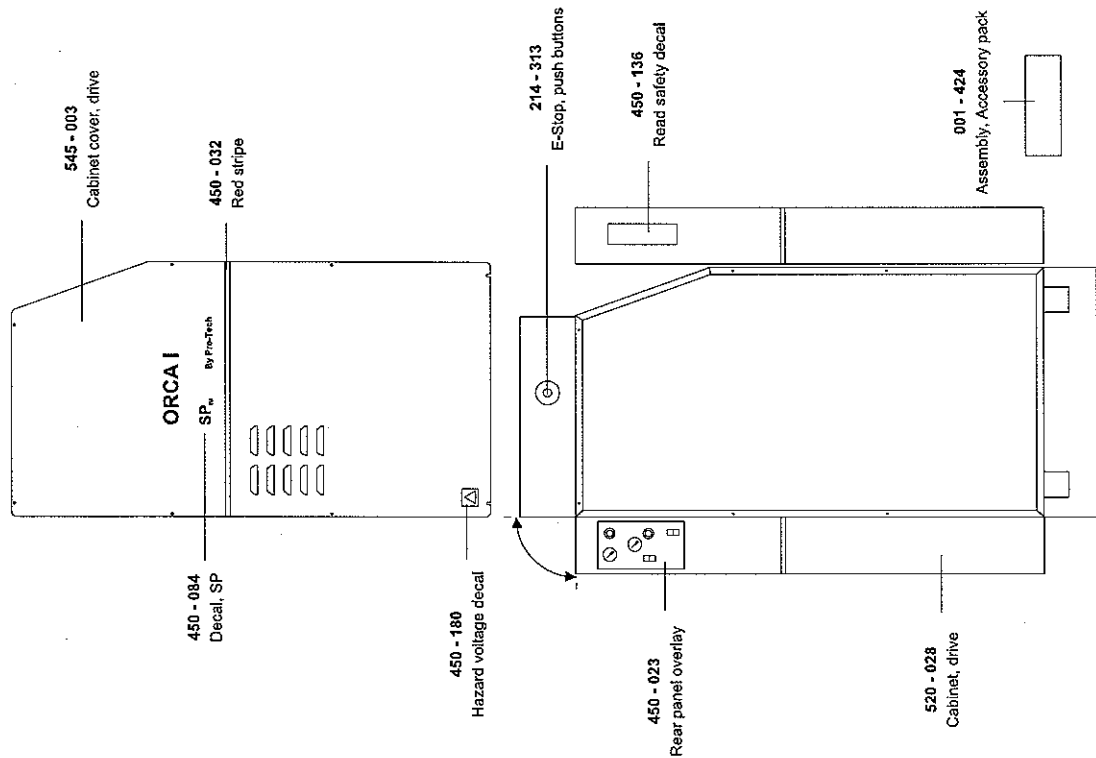
*Orca I SP*  
*Illustrated Parts Diagrams*  
*( 000 - 045 )*

*Available Options ;*  
*001 - 345 ( Outfeed table )*

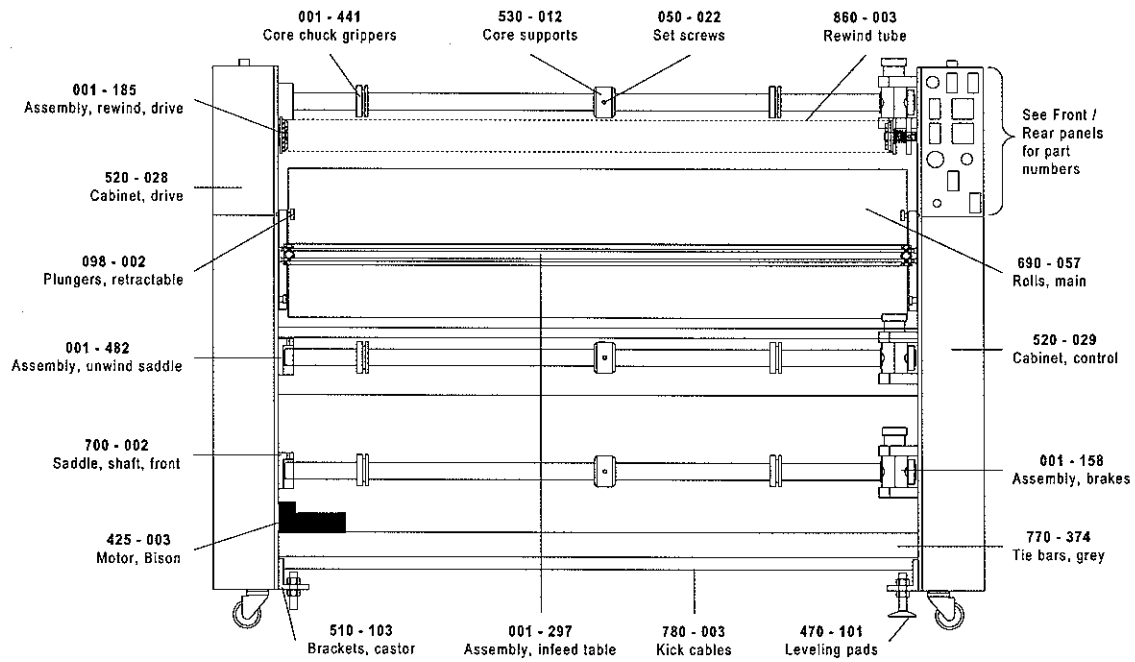
Control Side



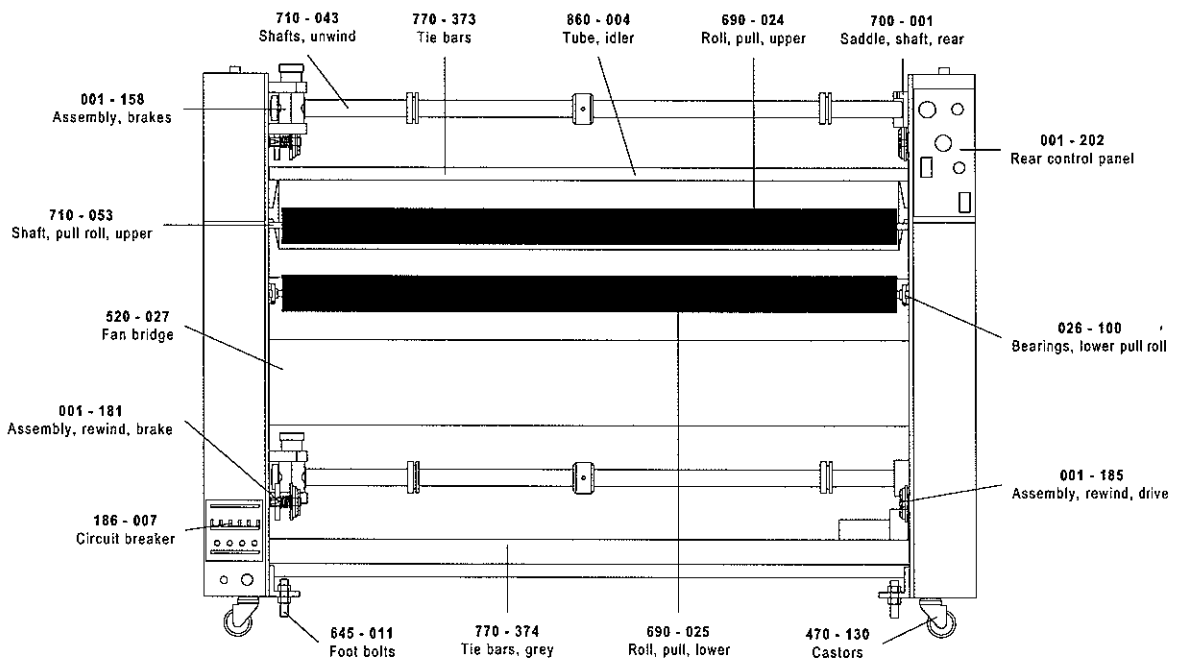
Drive Side

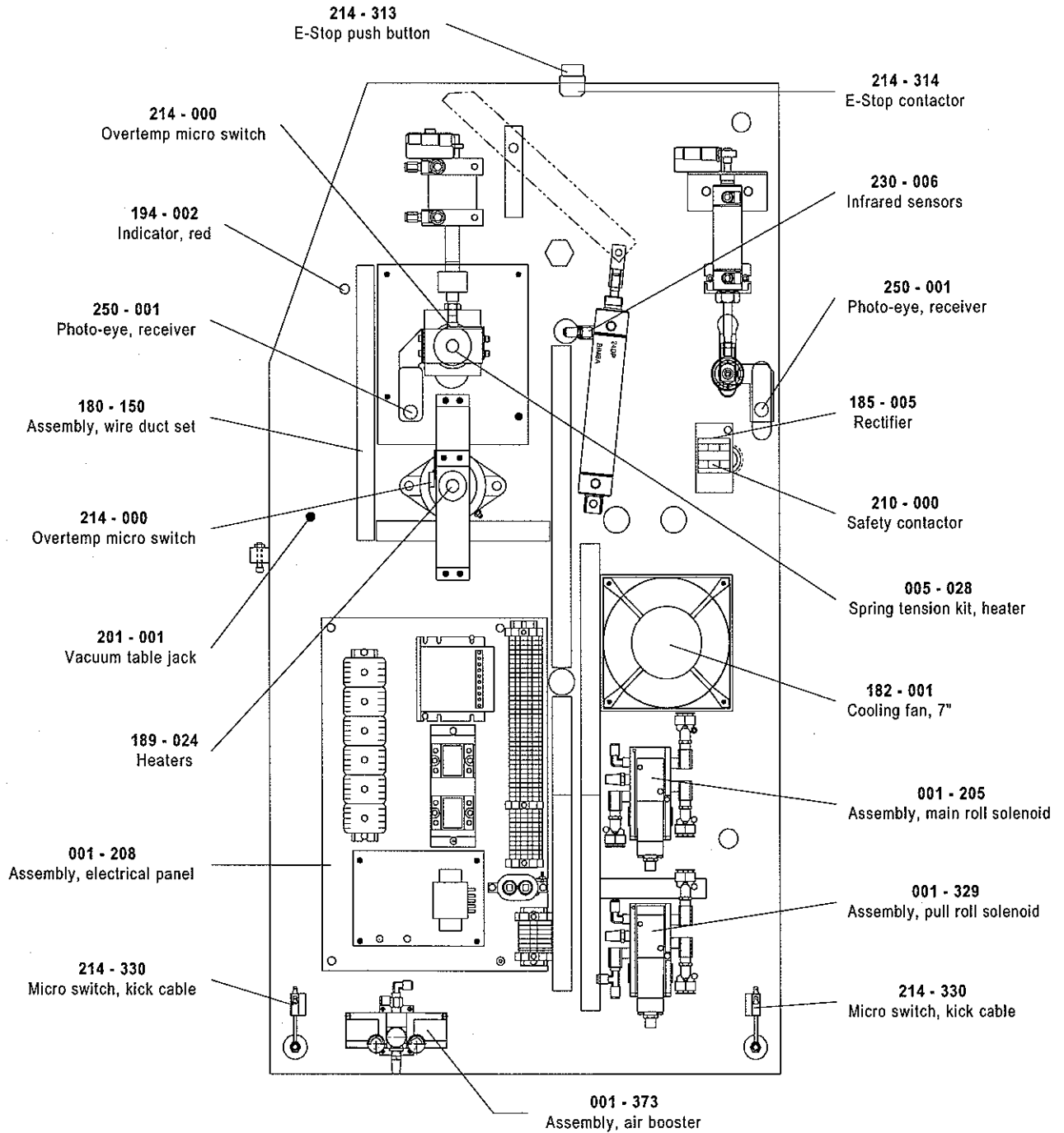


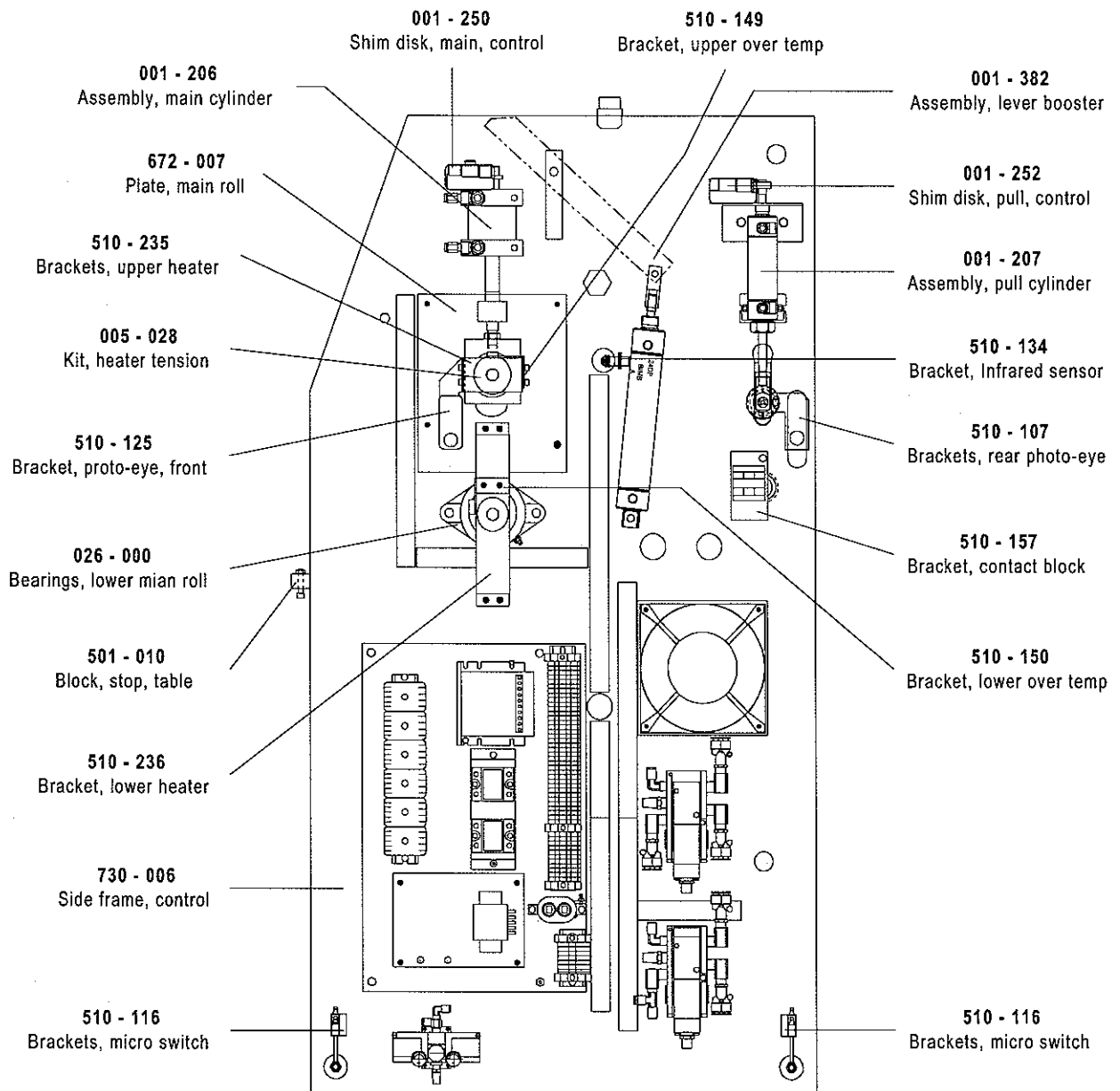
Front View

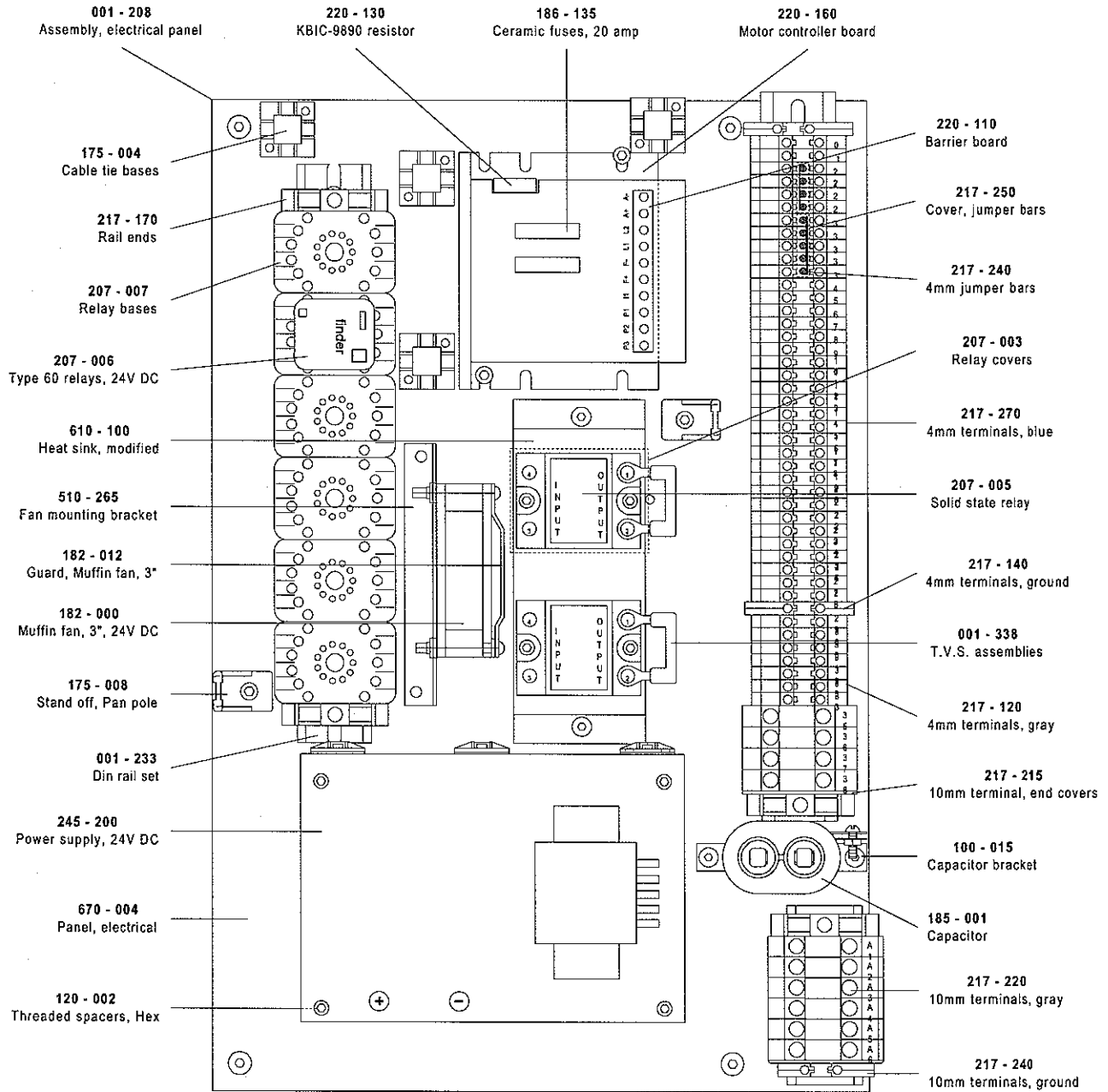


Rear View

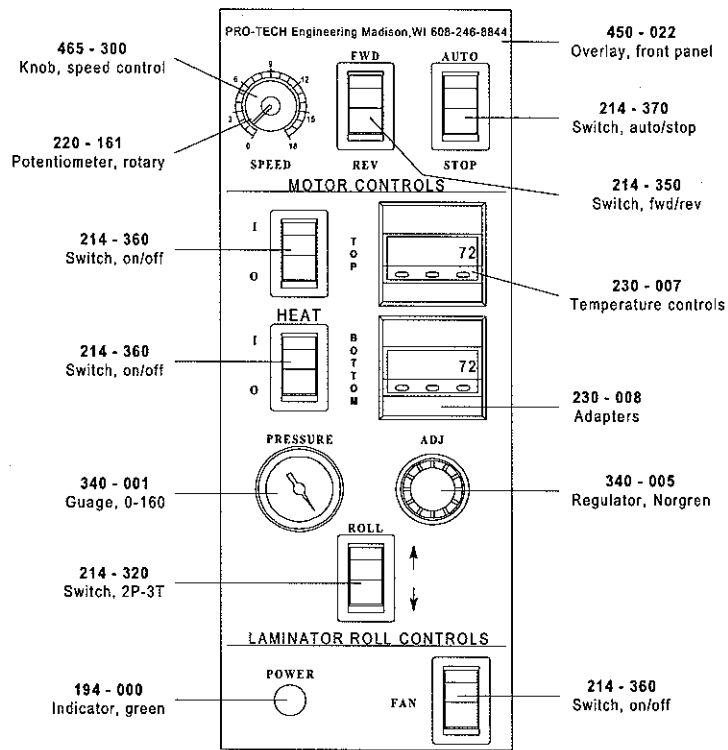




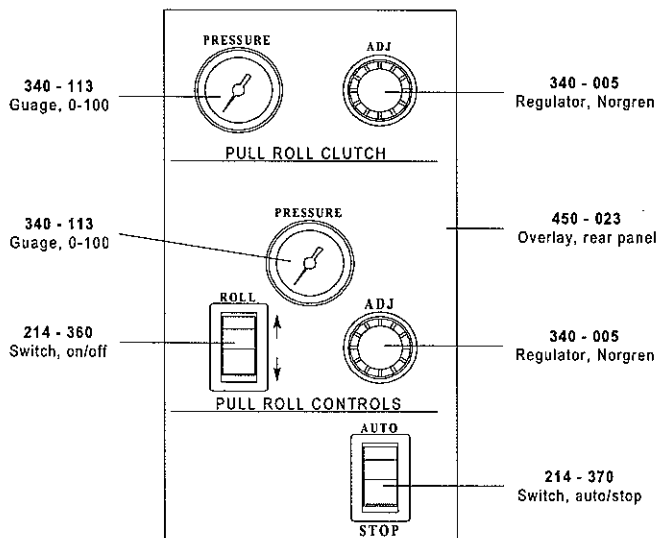


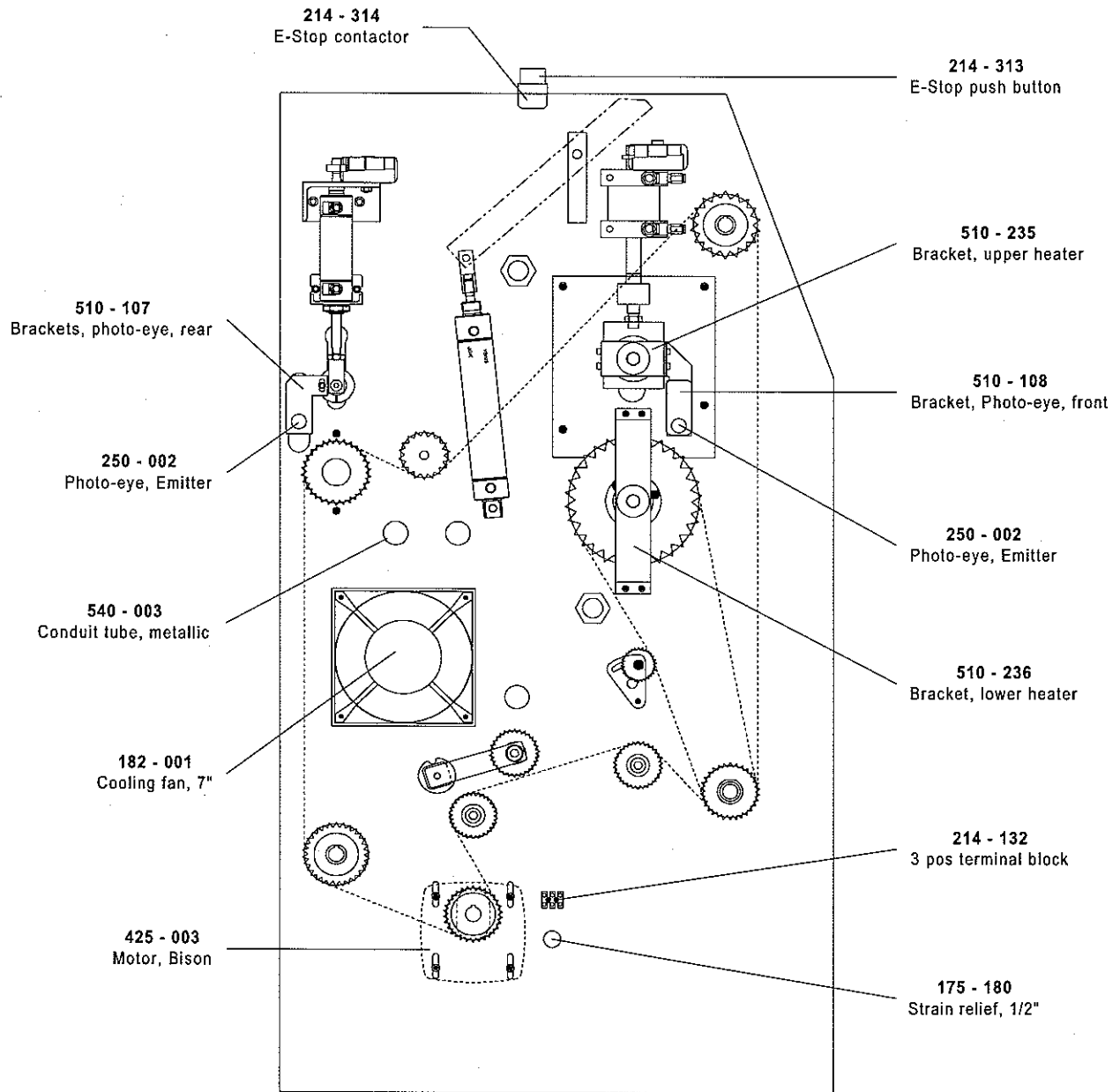


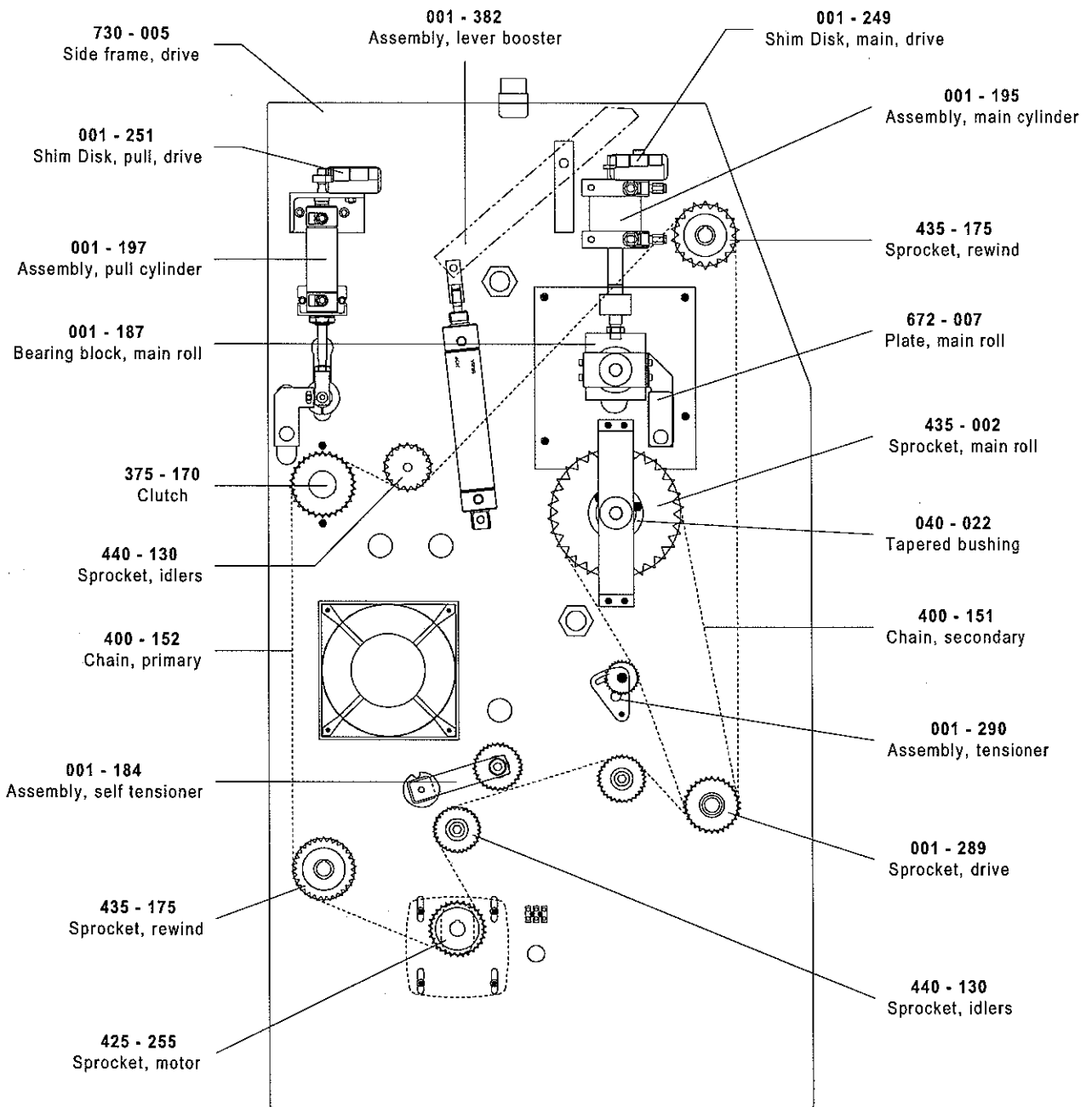
Front Control Panel



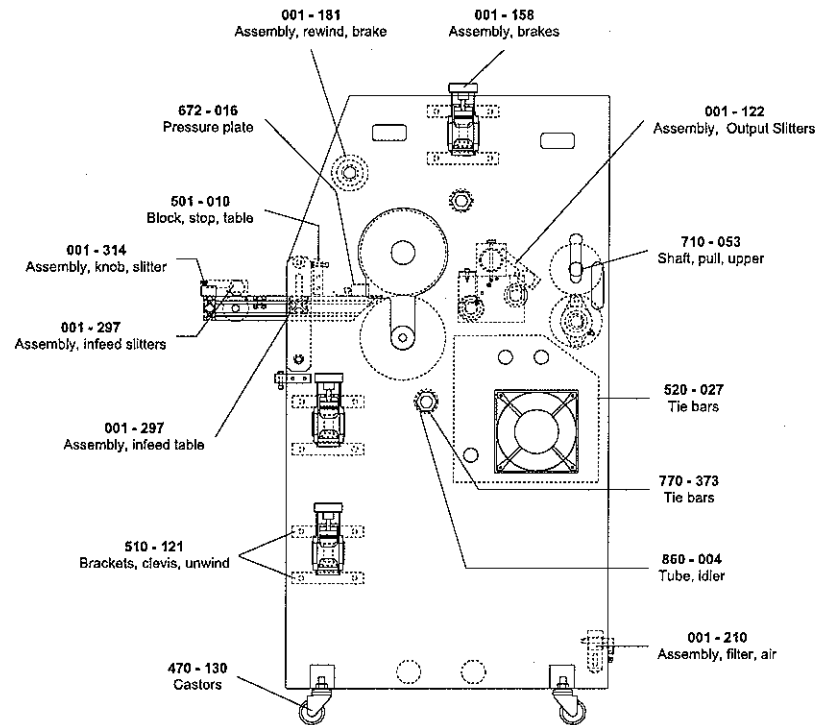
001 - 202 Rear Control Panel



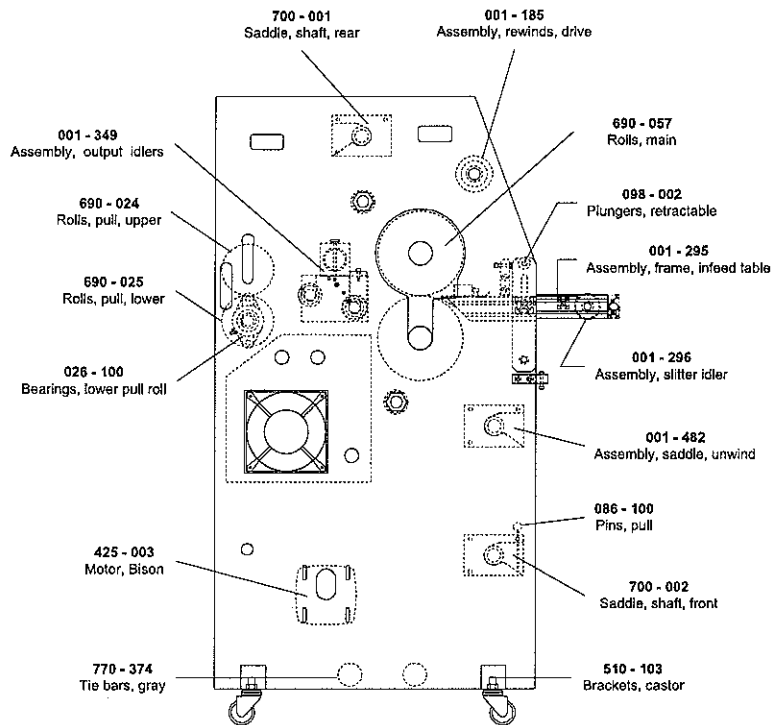




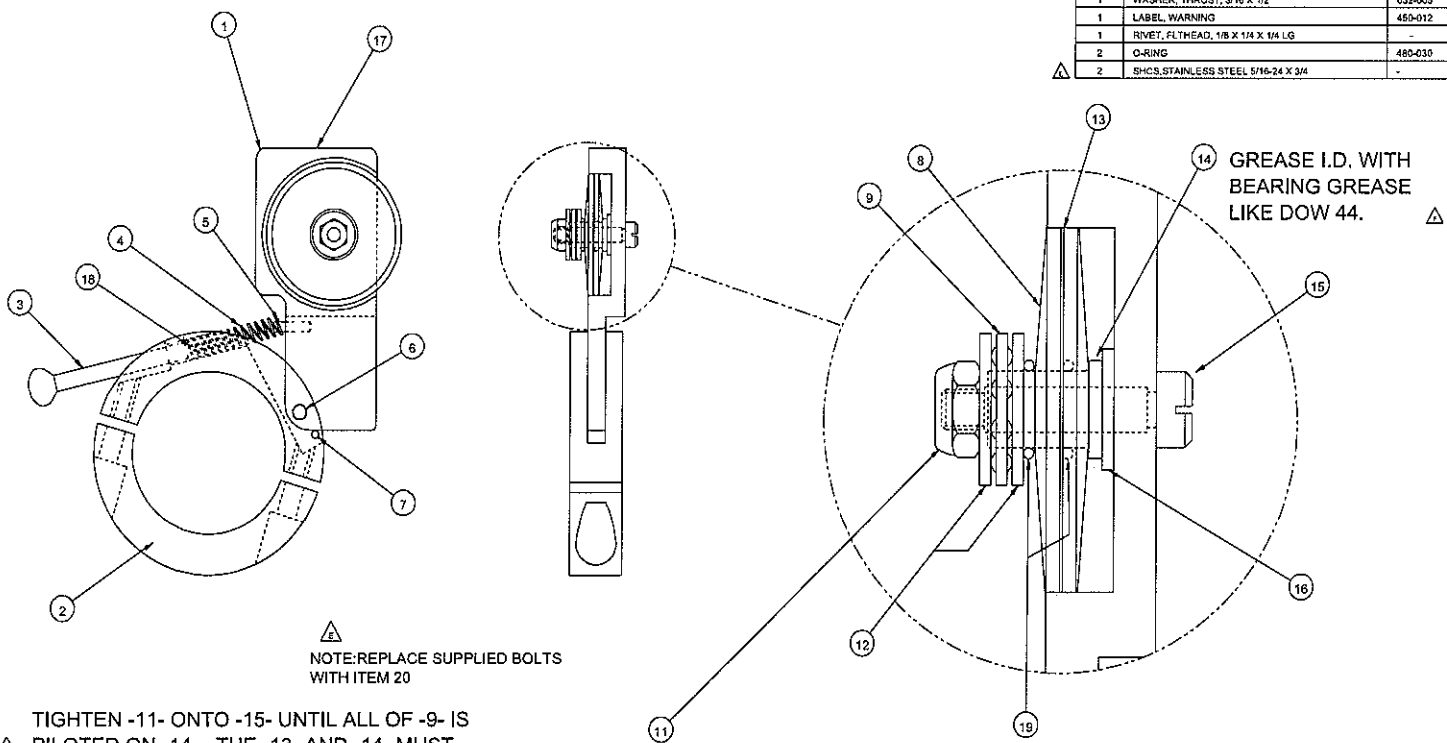
### Control Side



### Drive Side



REQ'D	DESCRIPTION	PART NO.	ITEM
1	ARM, SLITTER	740-008	1
1	COLLAR, INFEED SLITTER	740-052	2
1	SCREW, THUMB	505-010	3
1	SPRING, TENSION	089-150	4
1	ROLL PIN, 1/8 X 1/2 LG	095-100	5
1	DOWEL PIN, 3/16 X 1/2 LG	095-140	6
1	ROLL PIN, 3/32 X 5/8 LG	095-120	7
2	WASHER, CONCAVE	740-007	8
1	BEARING, THRUST, 5/16 X 5/8	032-003	9
-	-	-	10
1	NUT, NYLOCK, 6-32	-	11
2	WASHER, THRUST, 5/16 X 5/8	032-004	12
1	BLADE, SLITTER, CIRCULAR	475-001	13
1	FLANGED BUSHING, STEEL	040-037	14
1	STRIP, 3/16 X 3/4	063-032	15
1	WASHER, THRUST, 3/16 X 1/2	032-005	16
1	LABEL, WARNING	450-012	17
1	RIVET, FLT HEAD, 1/8 X 1/4 X 1/4 LG	-	18
2	O-RING	480-030	19
2	SHCS, STAINLESS STEEL 5/16-24 X 3/4	-	20



NOTE: REPLACE SUPPLIED BOLTS WITH ITEM 20

TIGHTEN -11- ONTO -15- UNTIL ALL OF -9- IS PILOTED ON -14-. THE -13- AND -14- MUST ROTATE FREELY TOGETHER ON -15-.

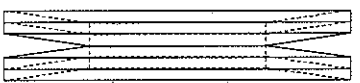
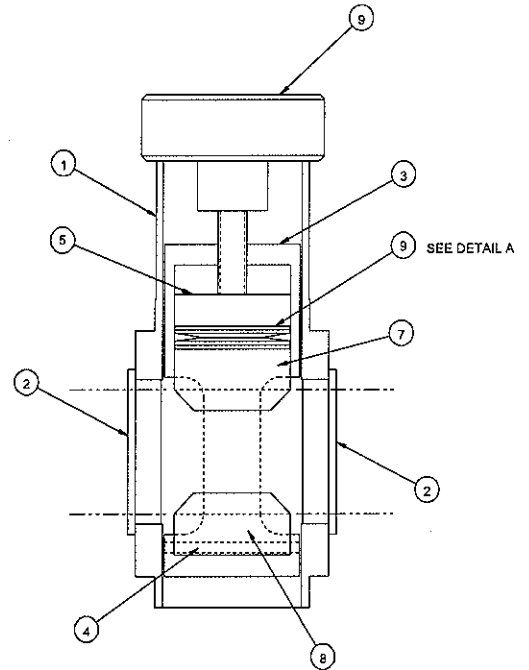
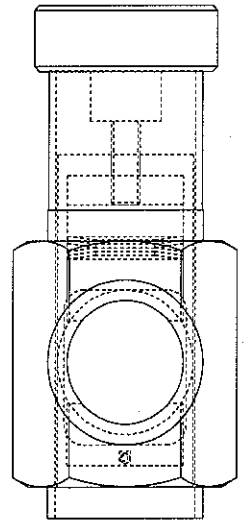
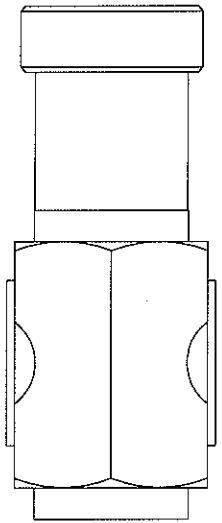
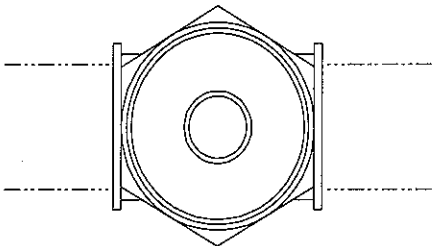
BLUE LOCTITE -11- TO -15-.

REV	DATE	BY	CHKD	APP'D	DESCRIPTION
G	3/27/0				
F	3/20/6				
E	2/25/1				
D	11/22				
C	10/13				
B	06/67				
A	04/42				

Pro-Tech Engineering	
SLITTER, INPUT	
O2, O3, O1SP	
DATE	05-15-04
REV	01
BY	P.R.
CHKD	CT
APP'D	001-122

REQ'D	DESCRIPTION	PART NO.	ITEM
1	PIN, PIVOT, UNWIND	625-008	1
2	BUSHING, FLANGE, NYLON	500-006	2
1	HOUSING, BRAKE	625-022	3
1	ROLL PIN, 1/8 X 1-3/4	095-105	4
1	PISTON, BRAKE	625-019	5
4	SPRING, DISC, 3/4 X 1-1/2	089-009	6
1	PAD, BRAKE, TOP	625-020	7
1	PAD, BRAKE, BOTTOM	625-021	8
1	NOB, ADJUSTMENT, BRAKE	465-020	9

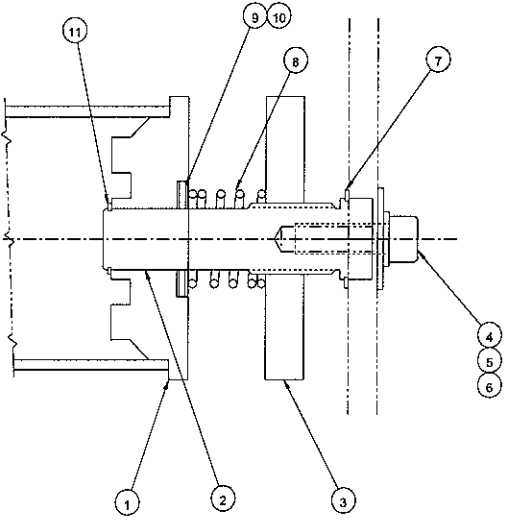


UDETAIL  
DISC SPRING  
ORIENTATION

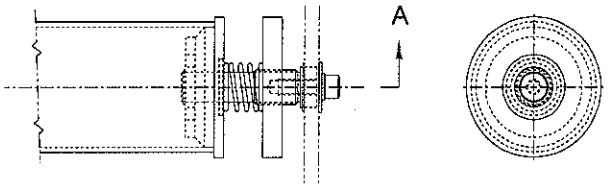
3X SCALE

SHEET 1		UNLESS OTHERWISE SPECIFIED		GBC PRO-TECH	
REV	DATE	BY	CHKD	DATE	BY
D	2507				
C	1186				
B	1161				
A	0937				
TITLE: ASSEMBLY, BRAKE		DATE: 11/88		SCALE: 1/1	
DRAWN BY: PJA		CHECKED BY: S		PART NO: 001-158	

REQ'D	DESCRIPTION	PART NO.	ITEM
1	PLUG, CLUTCH, ORCA I	X92-0112	1
1	SHAFT, REWIND, STANDOFF	X92-0113	2
1	KNOB, CLUTCH, KNURLED	625-007	3
1	3/8-16 X 1 LG SHCS	-	4
1	3/8 FLATWASHER	-	5
1	3/8 LOCKWASHER	-	6
1	SPRING CLIP, 5100-100	090-140	7
1	COMPRESSION SPRING, C1225-105-1500M	089-200	8
2	WASHER, THRUST, .030 THK	032-242	9
1	BEARING, THRUST	032-390	10
1	SNAP RING, 3/4 SHAFT, EXTERNAL	090-135	11

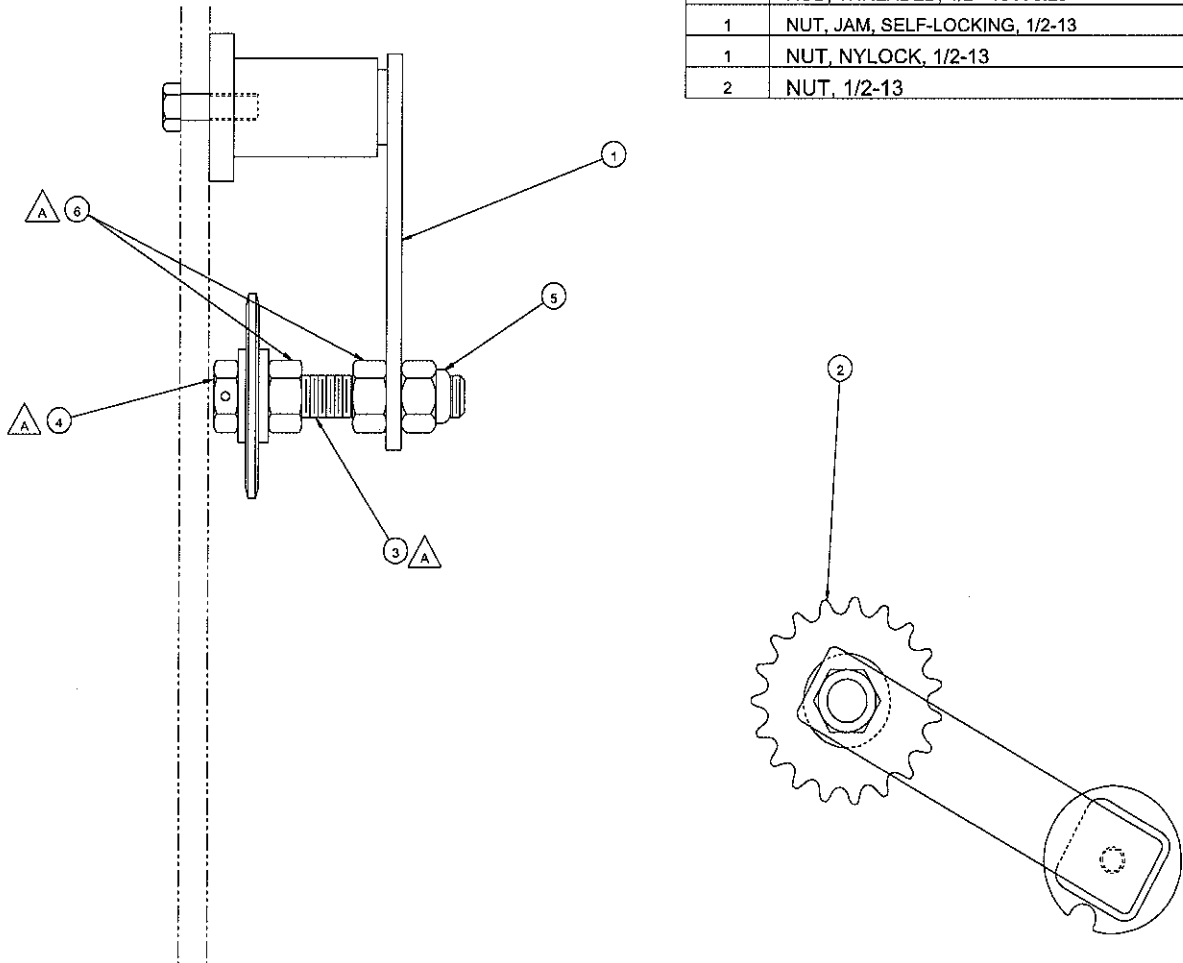


SECTION A-  
SCALE: 1 A



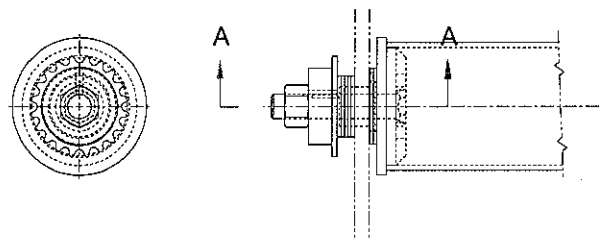
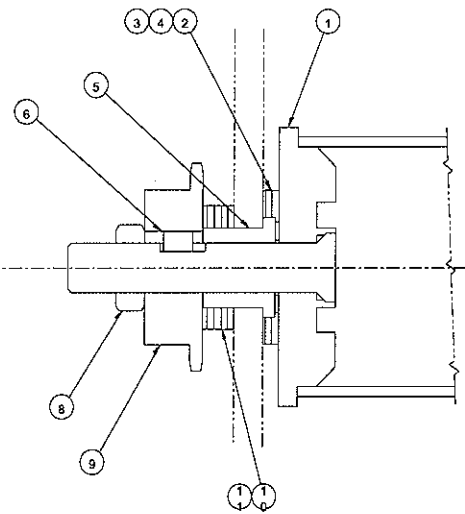
SHEET 1 OF 1		UNLESS OTHERWISE SPECIFIED TOLERANCE		 4151 Anderson Road, DanFors, Wisconsin Phone (800) 214-6466 Fax (262) 266-8544	
DIM. FINISH .0015 .0005 .003 .001 .005 .002 .01 .005 .02 .01 .03 .015 .04 .02 .05 .025 .06 .03 .07 .035 .08 .04 .09 .045 .1 .05	TYP. FINISH .0015 .0005 .003 .001 .005 .002 .01 .005 .02 .01 .03 .015 .04 .02 .05 .025 .06 .03 .07 .035 .08 .04 .09 .045 .1 .05	DATE 11/19/99 DRAWN BY RAS CHECKED P RELEASED	TITLE ASSY, REWIND, BRAKE ORCA 1	SCALE 1:2 NO. C Dwg. 001-181	GBC PRO-TECH

REQ'D	DESCRIPTION	PART NO.	ITEM
1	TENSIONER, CHAIN	440-150	1
1	SPROCKET, 19T	440-130	2
1	ROD, THREADED, 1/2 - 13 X 3.25	645-018	3
1	NUT, JAM, SELF-LOCKING, 1/2-13	-	4
1	NUT, NYLOCK, 1/2-13	-	5
2	NUT, 1/2-13	-	6



UNLESS OTHERWISE SPECIFIED DIMENSIONS ARE IN INCHES AND DECIMALS THEREOF		Pro-Tech Engineering 1111 S. UNIVERSITY BLVD. SUITE 200 P.O. BOX 348288 PHOENIX, AZ 85068	
TITLE ASSY, TENSIONER, CHAIN		DATE 11-15-91	
DRAWN BY K.L.		DESIGNED BY K.L.	
CHECKED BY V		PART NO. 001-184	

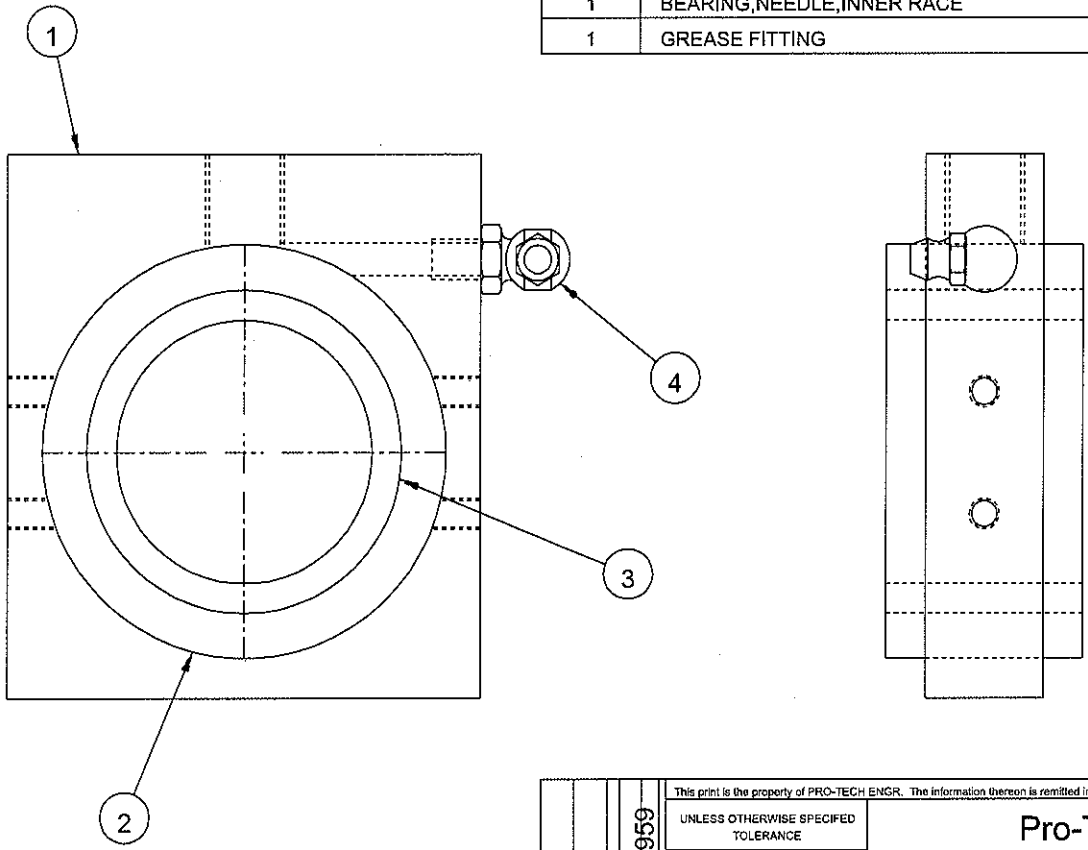
REQ'D	DESCRIPTION	PART NO.	ITEM
1	PLUG, CLUTCH DRIVE	001-261	1
1	WASHER, THRUST, .090 THK	032-420	2
1	WASHER, THRUST .030 THK	032-410	3
1	BEARING, THRUST	032-400	4
1	BUSHING, BOST-BRONZE	500-003	5
1	KEY, 1/4 X 1/4 X 3/8 LG	-	6
-	-	-	7
1	LOCK NUT, 5/8-11	-	8
1	SPROCKET, 35BS20x5/8	435-175	9
4	WASHER, THRUST, .090 THK	032-205	10
1	BEARING, THRUST	032-190	11



SECTION A-A  
SCALE: 2/1  
1

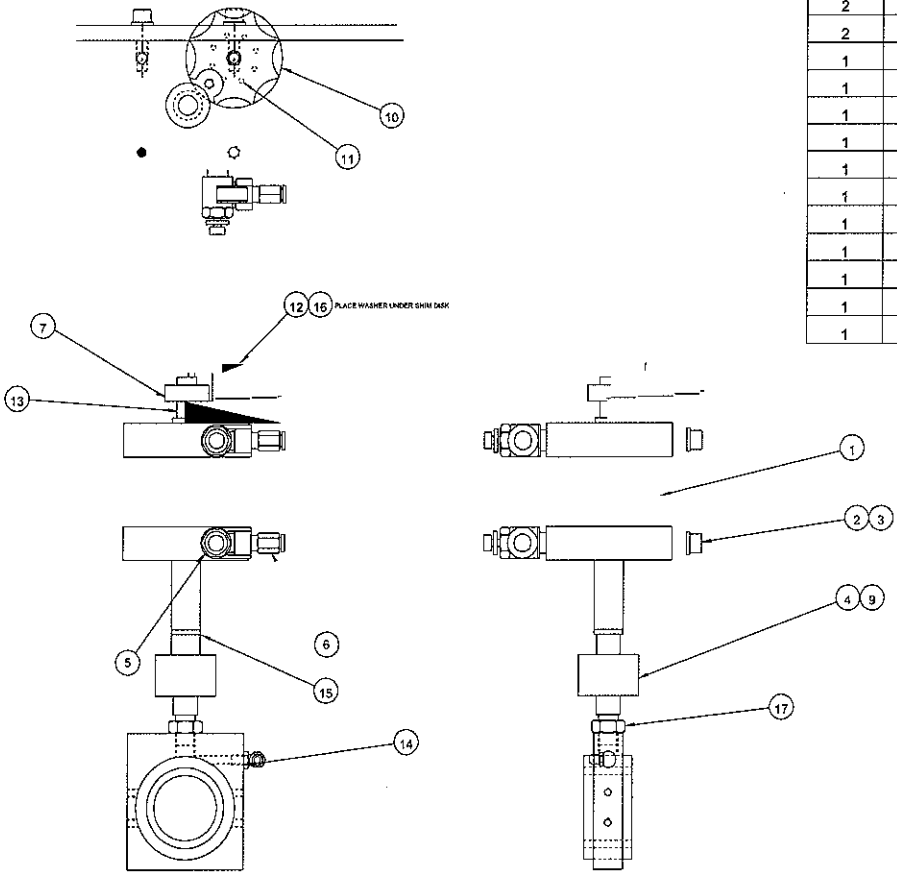
SHEET 1		PRO-TECH	
UNLESS OTHERWISE SPECIFIED		4111 Thomas Road, P.O. Box 178000 Phone (681) 246-8827 ext. 246-246	
DATE	TO	DATE	BY
CHK	P.V.	CHK	RAS
X	M	DATE	SCALE
X	P	1/2	C
X	ST	001-	185
X	DR		
X	QA		

REQ'D	DESCRIPTION	PART NO.	ITEM
1	BLOCK, BEARING, MAIN ROLL, ORCA I	501-009	1
1	BEARING, NEEDLE, OUTER RACE	028-000	2
1	BEARING, NEEDLE, INNER RACE	028-001	3
1	GREASE FITTING	060-005	4



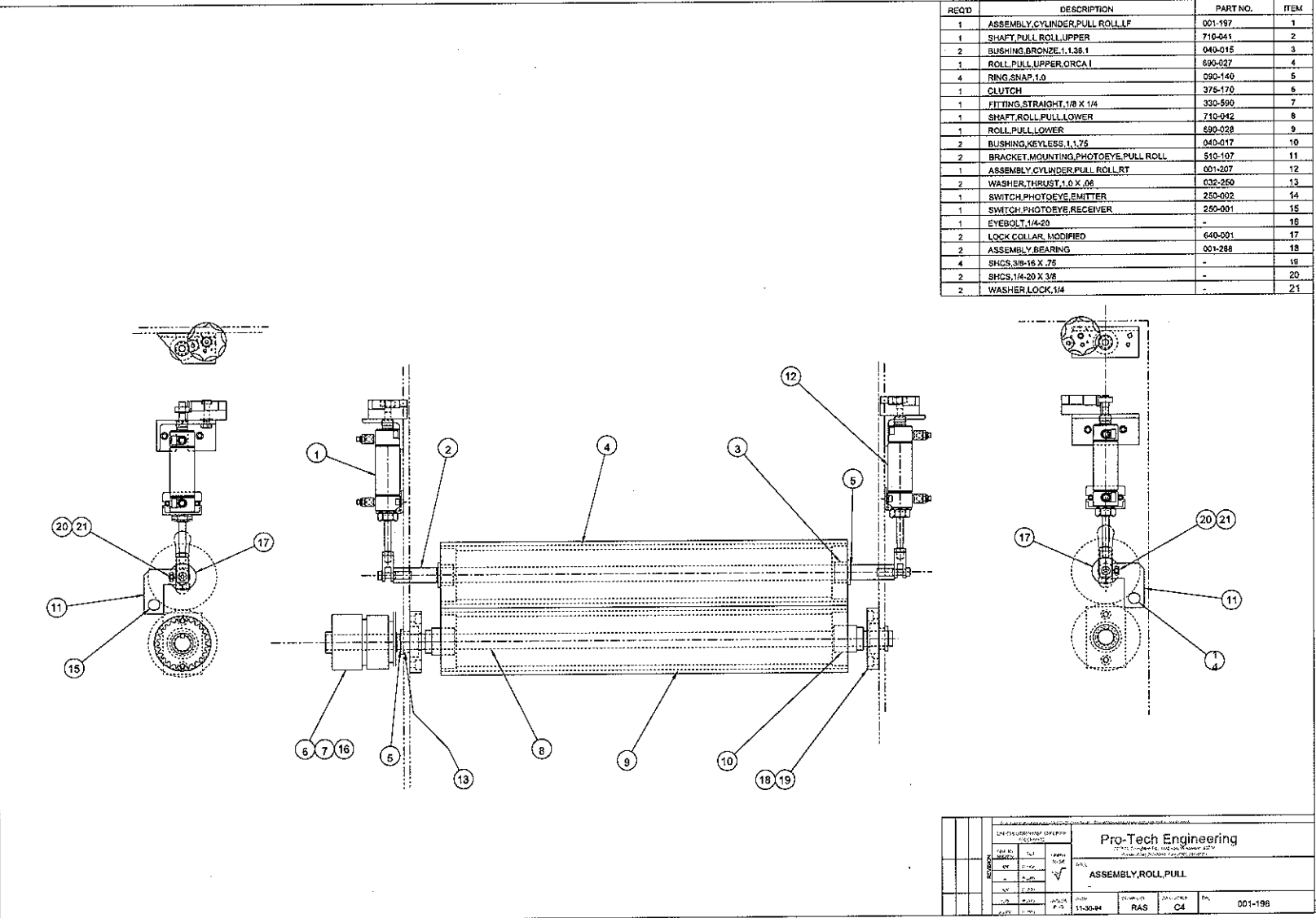
This print is the property of PRO-TECH ENGR. The information thereon is remitted in confidence.			
UNLESS OTHERWISE SPECIFIED TOLERANCE		<b>Pro-Tech Engineering</b> 2117 N. Sloughlon Rd. Madison, Wisconsin 53704 Phone (608) 246-8844 Fax (608) 246-8845	
DIM. AS SHOWN	TOL.	FINISH TO BE	TITLE:
XX	P 1/64	$125\sqrt{\quad}$	<b>BLK, BRG, LEFT, MAIN ROLL ORCA I</b>
X	P .050		
XX	P .020		
X.XX	P .010	ANGLES P 1D	DATE:
X.XXX	P .005		11-17-94
RAS 0959 A		DRAWN BY:	DWG SCALE:
		K.L.	Dwg:
		A1	001-187

REQ'D	DESCRIPTION	PART NO.	ITEM
1	CYLINDER,2.5 X 1.75	320-320	1
4	SHCS,5/16-18 X .75	-	2
4	WASHER,LOCK,5/16	-	3
1	COUPLING,ROD END,1/2-20	325-000	4
2	CONTROL,FLOW	330-130	5
2	FITTING,STRAIGHT,1/4NPT X 1/4	330-600	6
1	LOCK COLLAR,1/2-20	290-260	7
1	SHCS,1/2-20 X .5	-	8
1	STUD, THREADED, 1/2 - 20 x 1"	645-007	9
1	ASSEMBLY,SHIM DISK,LEFT	001-249	10
1	PLUNGER,SPRING,1/4-20	098-120	11
1	BOLT,SHOULDER,3/8,1.0,5/16-18	-	12
1	STUD, THREADED, 1/2 - 20 x 1-3/4"	645-006	13
1	ASSEMBLY,BLOCK,BEARING,LEFT,MAIN ROLL	001-187	14
1	WASHER,THRUST,.060	068-100	15
1	WASHER,THRUST,.312 X .06	032-360	16
1	1/2-20 HEX JAM NUT	-	17



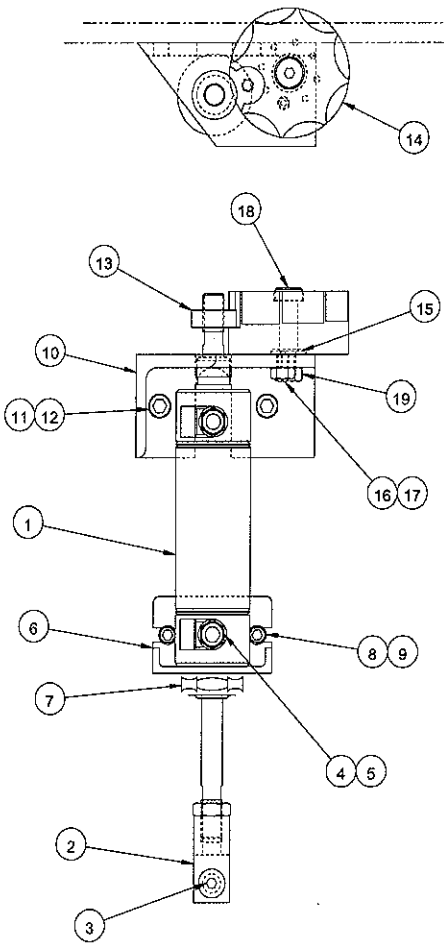
2745	2539	0964	0958	0913	0892
EL	LE	LD	LC	LB	LA
REV	BY	CHK	APP	DATE	DESCRIPTION
Pro-Tech Engineering 11174 E. Highway 100, Suite 100, Westport, OR 97143 Phone: (503) 866-6667 Fax: (503) 866-6668					
ASSEMBLY,CYLINDER,MAIN LEFT					
DATE	DRAWN BY	DWG SCALE	IMP	001-195	
11-29-94	RAS	C2			

RECD	DESCRIPTION	PART NO.	ITEM
1	ASSEMBLY,CYLINDER,PULL,ROLL,LF	001-197	1
1	SHAFT,PULL,ROLL,UPPER	710-041	2
2	BUSHING,BRONZE,1.135 I	040-015	3
1	ROLL,PULL,UPPER,ORCA I	690-027	4
4	RING,SNAP,1.0	090-140	5
1	CLUTCH	375-170	6
1	FITTING,STRAIGHT,1/8 X 1/4	330-590	7
1	SHAFT,ROLL,PULL,LOWER	710-042	8
1	ROLL,PULL,LOWER	690-028	9
2	BUSHING,KEYLESS,1.135	040-017	10
2	BRACKET,MOUNTING,PHOTOEYE,PULL,ROLL	610-107	11
1	ASSEMBLY,CYLINDER,PULL,ROLL,RT	001-207	12
2	WASHER,THRUST,1.0 X .08	030-250	13
1	SWITCH,PHOTOEYE,EMITTER	250-002	14
1	SWITCH,PHOTOEYE,RECEIVER	250-001	15
1	EYEBOLT,1/4-20	-	16
2	LOCK COLLAR, MODIFIED	640-001	17
2	ASSEMBLY,BEARING	001-288	18
4	SHCS,3/8-16 X .75	-	19
2	SHCS,1/4-20 X 3/8	-	20
2	WASHER,LOCK,1/4	-	21



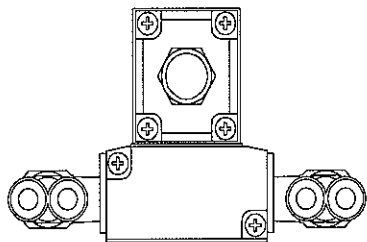
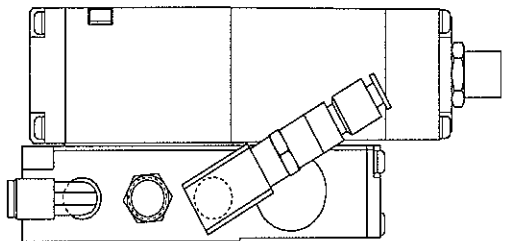
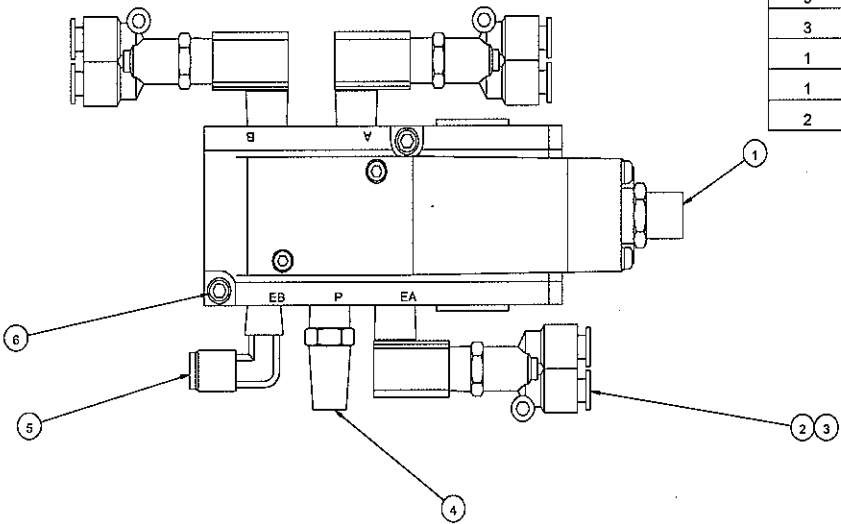
THE FOLLOWING INFORMATION IS FOR IDENTIFICATION ONLY. DATE: 11-30-94 BY: RAS CHECKED: C4 APPROVED: P-1		Pro-Tech Engineering 17711 S. Highway 102, Suite 100, Houston, TX 77058 Phone: (281) 485-1100 Fax: (281) 485-1101	
ASSEMBLY,ROLL,PULL		PART NO. 001-196	REV. 001

REQ'D	DESCRIPTION	PART NO.	ITEM
1	CYLINDER,1.5 X 2	320-190	1
1	CLEVIS,CYLINDER,7/16-20	325-001	2
1	SCREW,SHOULDER,3/8 X 1.5/16-18	-	3
2	CONTROL_FLOW,1/8NPT	330-120	4
2	FITTING,STRAIGHT,1/8 X 1/4	330-590	5
1	BRACKET,MOUNTING,CYLINDER	325-110	6
1	NUT,HEX,3/4-16	-	7
2	SHCS,1/4-20 X .5	-	8
2	WASHER,LOCK,1/4	-	9
Δ 1	BRACKET, SHIM DISK, LEFT	510-220	10
2	SHCS,5/16-18 X .52	-	11
2	WASHER,LOCK,5/16	-	12
1	COLLAR,LOCK,7/16	290-220	13
1	ASSEMBLY,SHIM DISK,PULL, LEFT	001-251	14
1	WASHER,THRUST,.312 X .06	032-360	15
Δ 1	PLUNGER,SPRING,1/4-20	098-120	16
1	NUT,HEX,JAM	-	17
1	BOLT,SHOULDER,3/8,1.0,5/16-18	-	18
1	NUT,HEX,5/16-18	-	19



REV	2745	2865	1089	1044	0915	SHEET 1 OF 1		 4151 Anderson Road, DeForest, Wisconsin 53532 Phone (262) 246-6844 Fax (262) 246-6845
DATE	5/27/97	2/18/97	4/23/97	2/18/97	1/18/97	UNLESS OTHERWISE SPECIFIED TOLERANCE		
BY	D	C	B	A	DIM. AS SHOWN TOL. FRESH TO BE XX P.164 X P.050 XX P.030 XX P.010 XXX P.005		TITLE: ASSY,CYLINDER,PULL ROLL,LEFT	
DATE	11-29-94	DATE	11-29-94	DATE	11-29-94	ANGLE P.10 RELEASE NO.	DRAWN BY: RAS	SCALE: 1:2
REV	D	C	B	A	QTY: B	Dwg: 001-197		

REQ'D	DESCRIPTION	PART NO.	ITEM
1	VALVE, AIR, SOLENOID	350-115	1
3	FITTING,AIR,ELBOW,1/4NPT	330-760	2
3	Y-FITTING,1/4NPT	330-310	3
1	MUFFLER, AIR	330-280	4
1	FITTING, AIR, ELBOW, MALE 1/4 NPT	330-730	5
2	CAP SCREWS, SOCKET, #10-32 X 1-1/4 LG	-	6



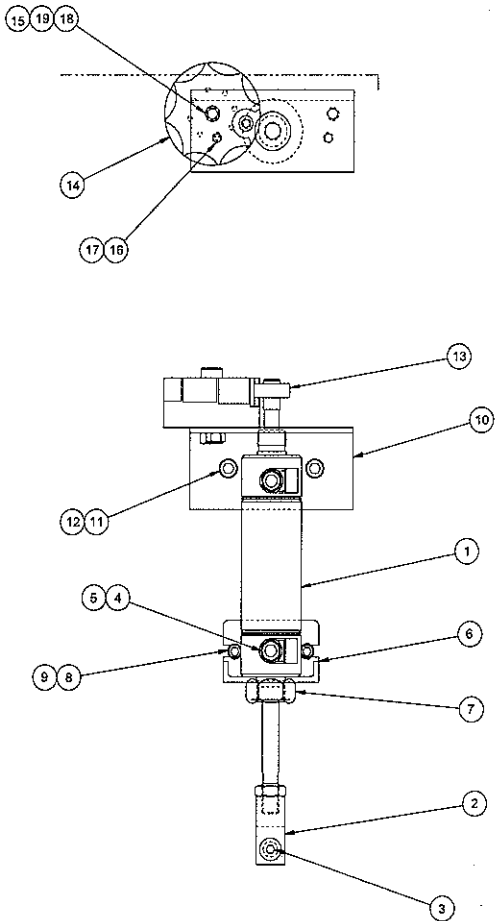
ROTATE FITTINGS AS REQUIRED FOR BEST ASSEMBLY

UNLESS OTHERWISE SPECIFIED		Pro-Tech Engineering		3117	
REVISED		ASSEMBLY, VALVE, CONTROL		001-205	
REV	DATE	BY	CHKD	FIG	
1	12-08	K.L.		1	



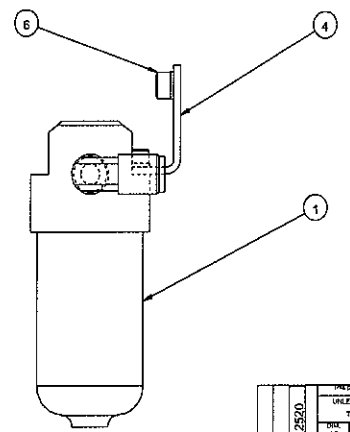
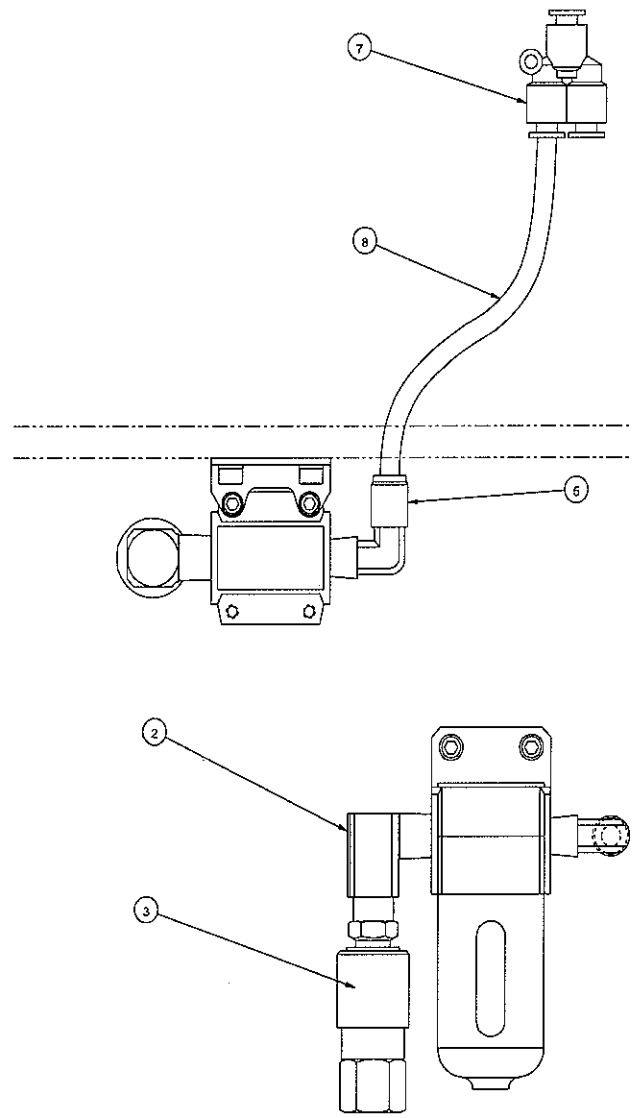
REQ'D	DESCRIPTION	PART NO.	ITEM
1	CYLINDER, 1.5 X 2	320-190	1
1	CLEVIS, CYLINDER, 7/16-20	325-001	2
1	SCREW, SHOULDER, 3/8 X 1.5/16-18	-	3
2	CONTROL, FLOW, 1/8NPT	330-120	4
2	FITTING, STRAIGHT, 1/8 X 1/4	330-590	5
1	BRACKET, MOUNTING, CYLINDER	325-110	6
1	NUT, HEX, 3/4-16	-	7
2	SHCS, 1/4-20 X .5	-	8
2	WASHER, LOCK, 1/4	-	9
1	BRACKET, MOUNTING, SHIM, CYLINDER	510-132	10
2	SHCS, 5/16-18 X .62	-	11
2	WASHER, LOCK, 5/16	-	12
1	COLLAR, LOCK, 7/16	290-220	13
1	ASSEMBLY, SHIM DISK, PULL, RIGHT	001-252	14
1	WASHER, THRUST, 3/12 X .06	032-360	15
1	PLUNGER, SPRING, 1/4-20	098-120	16
1	NUT, HEX, JAM	-	17
1	BOLT, SHOULDER, 3/8, 1.0, 5/16-18	-	18
1	NUT, HEX, 5/16-18	-	19

PLACE WASHER UNDER SHIM DISK



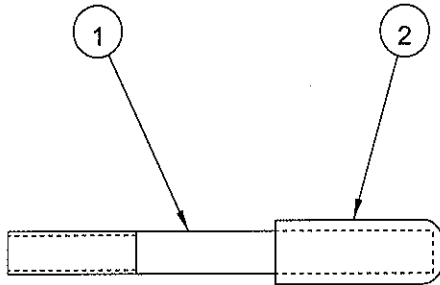
2745	1090	1045	0916
D	C	B	A
REV	DATE	BY	CHKD
1	11-29-94	RA	CS
Pro-Tech Engineering 1117 E. Brighton Rd., Mt. Airy, N.C. 28551 Phone: (919) 286-8800 Fax: (919) 286-8805			
ASSY, CYLINDER, PULL ROLL, RIGHT			
QTY: 1		UNIT: 001-207	

REQ'D	DESCRIPTION	PART NO.	ITEM
1	FILTER,NAF-2000-N02-C	340-250	1
1	FITTING,AIR,ELBOW,1/4NPT	330-760	2
1	COUPLE,KWIK 711	330-260	3
1	BRKT.,FILTER,B-240	100-220	4
1	FITTING, AIR, ELBOW, MALE 1/4 NPT	330-730	5
2	SHCS,10-32 x .5	-	6
1	AIR,FITTING,UNION-Y	330-305	7
13'	TUBING, PNEUMATIC, FLAME-RETARDENT	360-001	8



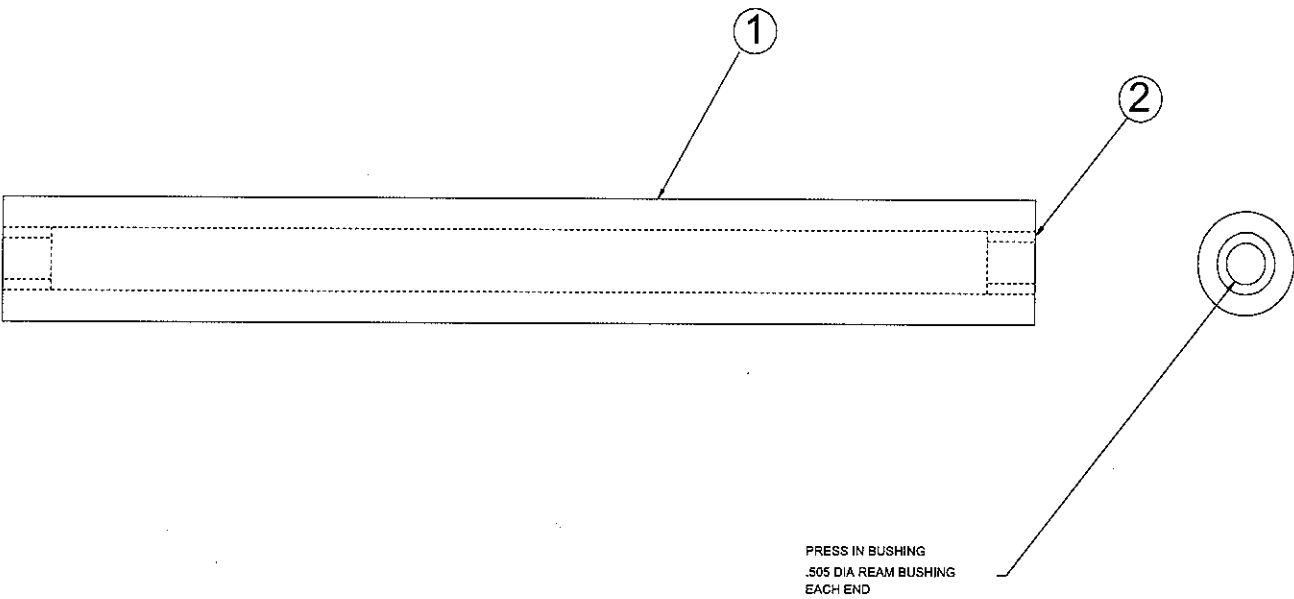
UNLESS OTHERWISE SPECIFIED, THE DIMENSIONS ARE IN INCHES.		ProCut Equipment 2117 N. SHAWNEE BLVD. TERRELLA, MISSOURI PHONE (800) 245-2264 FAX (800) 245-2265	
DRW: 211 DATE: 10/99 X 1/2 X 3/4 X 1	TOL: ±.005 P.U: ±.01 F.F: ±.015 F.F: ±.02 F.F: ±.03 F.F: ±.04 F.F: ±.05 F.F: ±.06 F.F: ±.07 F.F: ±.08 F.F: ±.09 F.F: ±.10	FINES: 1/16 TOL: ±.005 P.U: ±.01 F.F: ±.015 F.F: ±.02 F.F: ±.03 F.F: ±.04 F.F: ±.05 F.F: ±.06 F.F: ±.07 F.F: ±.08 F.F: ±.09 F.F: ±.10	TITLE: ASSEMBLY, FILTER, AIR DATE: 10/99 DRAWN BY: KL DWG SCALE: C1 001-210

REQ'D	DESCRIPTION	PART NO.	ITEM
1	HEXHEAD BOLT, MOD, 1/4-20 X 2.5	505-001	1
1	CAP,VINYL	465-014	2



This print is the property of PRO-TECH ENGR. The information thereon is remitted in confidence.									
UNLESS OTHERWISE SPECIFIED TOLERANCE					<b>Pro-Tech Engineering</b> 2117 N. Stoughton Rd. Madison, Wisconsin 53704 Phone (608) 246-8844 Fax (608) 246-8645				
DIM. AS SHOWN		TOL.		FINISH TO BE					
XX		P .164		125√					
X		P .050							
X.X		P .020							
X.XX		P .010		ANGLES P ID					
X.XXX		P .005							
TITLE: ASSEMBLY,HANDLE,CAM ORCA I					DATE: 12-19-94	DRAWN BY: RAS	DWG SCALE: A1	Dwg: 001-217	

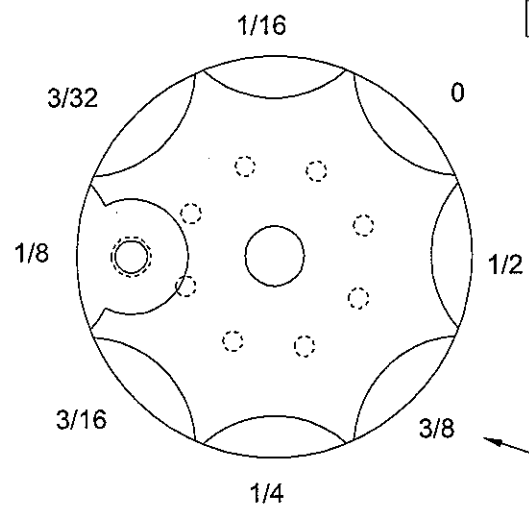
REQ'D	DESCRIPTION	PART NO.	ITEM
1	IDLER,INFEED,PAPER	620-013	1
2	BUSHING,BRONZ,.5 X .75 X .625	040-026	2



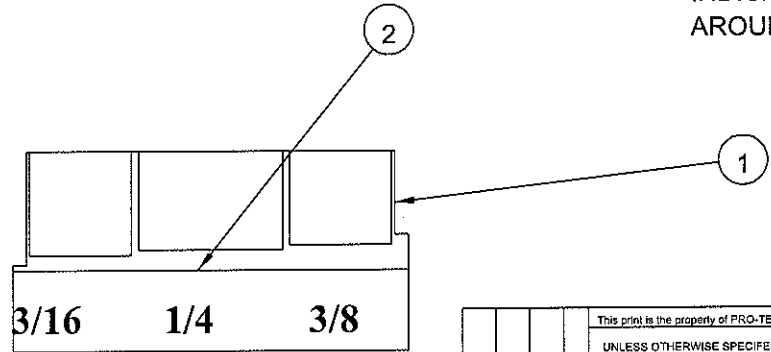
UNLESS OTHERWISE SPECIFIED TOLERANCES:				Pro-Tech Engineering 2177 N. Douglas Rd. Elgin, Illinois 60120 Phone (815) 398-6884 Fax (815) 398-6883			
FR	ASSEMBLY	DATE	BY	CHKD BY	DATE	BY	CHKD BY
NA	ASSEMBLY	12-15-94	RAS	C1			
REV	DESCRIPTION	DATE	BY	CHKD BY	DATE	BY	CHKD BY
1	ASSEMBLY, IDLER, INFEED, PAPER						
2	ORCA 1						
TITLE: ASSEMBLY, IDLER, INFEED, PAPER				PART NO: 001-218			



REQ'D	DESCRIPTION	PART NO.	ITEM
1	SHIM DISK	720-019	1
1	OVERLAY,SHIM DISK,MAIN ROLL	450-021	2

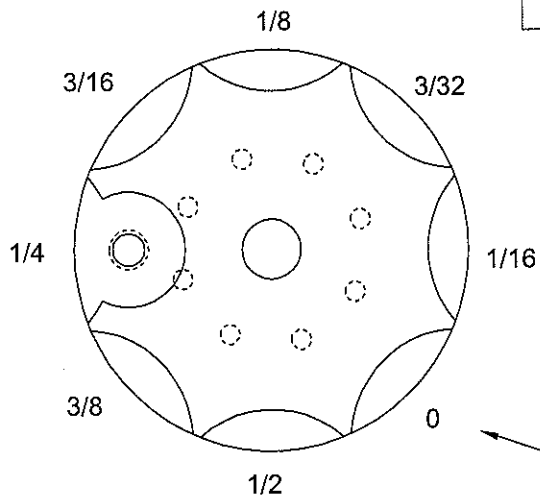


INDICATES POSITION OF LABEL AROUND CIRCUMFERENCE

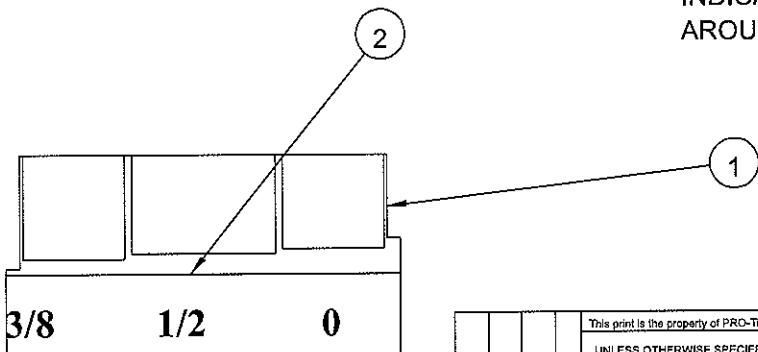


This print is the property of PRO-TECH ENGR. The information thereon is reprinted in confidence.			
UNLESS OTHERWISE SPECIFIED TOLERANCE			<b>Pro-Tech Engineering</b> 2117 N. Sloughton Rd., Madison, Wisconsin 53704 Phone (608) 246-8844 Fax (608) 246-8645
DIM. AS SHOWN	TOL.	FINISH TO BE	
XXX	P .1/64	125√	TITLE: <b>ASSEMBLY,SHIM DISK,MAIN LEFT</b> <b>ORCA I</b>
X.	P .050		
X.X	P .020	ANGLES P 1D	DATE: <b>3-01-95</b>
X.XX	P .010		
X.XXX	P .005	DRAWN BY: <b>RAS</b>	DWG SCALE: <b>A1</b>
			Dwg: <b>001-249</b>

REQ'D	DESCRIPTION	PART NO.	ITEM
1	SHIM DISK	720-019	1
1	OVERLAY, SHIM DISK, MAIN ROLL	450-021	2

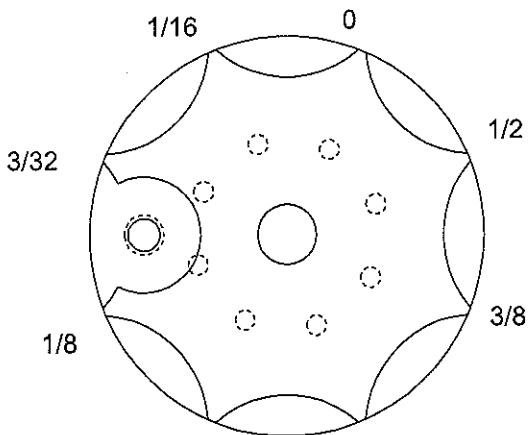


INDICATES POSITION OF LABEL  
AROUND CIRCUMFERENCE

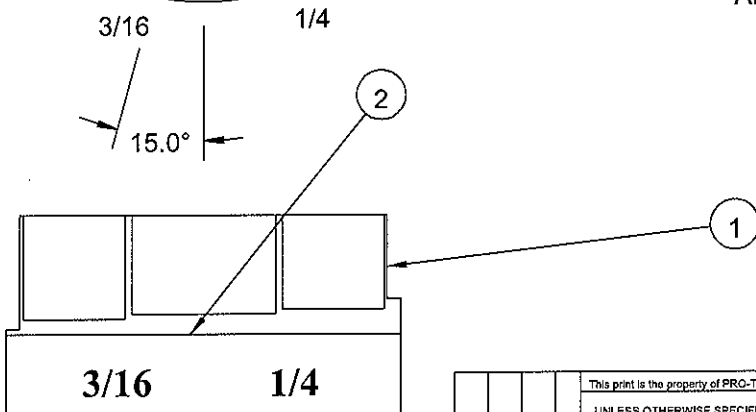


UNLESS OTHERWISE SPECIFIED TOLERANCE				Pro-Tech Engineering 2117 N. Sloughthon Rd. Madison, Wisconsin 53704 Phone (608) 246-8844 Fax (608) 246-8645			
REVISION	DIM. AS SHOWN	TOL.	FINISH TO BE	TITLE: ASSEMBLY, SHIM DISK, MAIN RIGHT ORCA I  DATE: 3-01-95    DRAWN BY: RAS    DWG SCALE: A1    Dwg: 001-250			
	X/X	P .164	125√				
	X.	P .050					
	X.X	P .020					
	X.XX	P .010					
X.XXX	P .005						

REQ'D	DESCRIPTION	PART NO.	ITEM
1	SHIM DISK	720-019	1
1	OVERLAY,SHIM DISK,MAIN ROLL	450-021	2

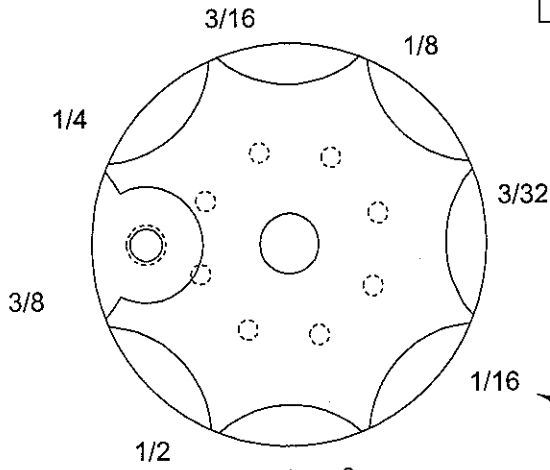


INDICATES POSITION OF LABEL  
AROUND CIRCUMFERENCE

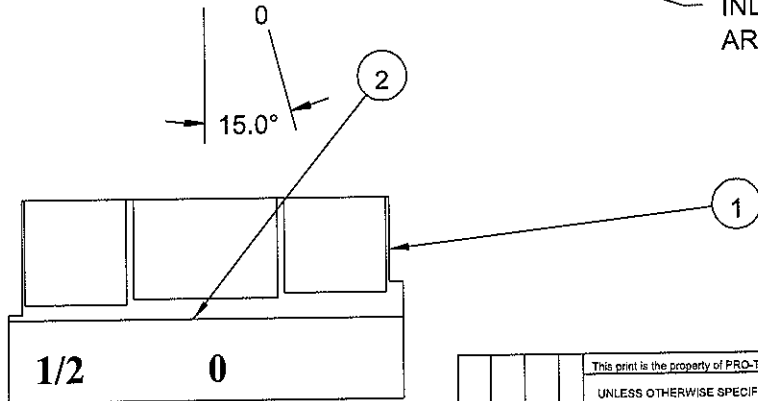


This print is the property of PRO-TECH ENGR. The information thereon is remitted in confidence.			
UNLESS OTHERWISE SPECIFIED TOLERANCE			<b>Pro-Tech Engineering</b> 2117 N. Stoughton Rd. Madison, Wisconsin 53704 Phone (608) 246-8844 Fax (608) 246-8645
DIM. AS SHOWN	TOL.	FINISH TO BE	
XX	P 1/64	125√	TITLE: <b>ASSEMBLY,SHIM DISK,PULL,LEFT ORCA I</b>
X	P .050		
X.X	P .020		
X.XX	P .010	ANGLES P 1D	DATE: 3-01-95
X.XXX	P .005		DRAWN BY: RAS
			DWG SCALE: A1
			Dwg: 001-251

REQ'D	DESCRIPTION	PART NO.	ITEM
1	SHIM DISK	720-019	1
1	OVERLAY, SHIM DISK, MAIN ROLL	450-021	2

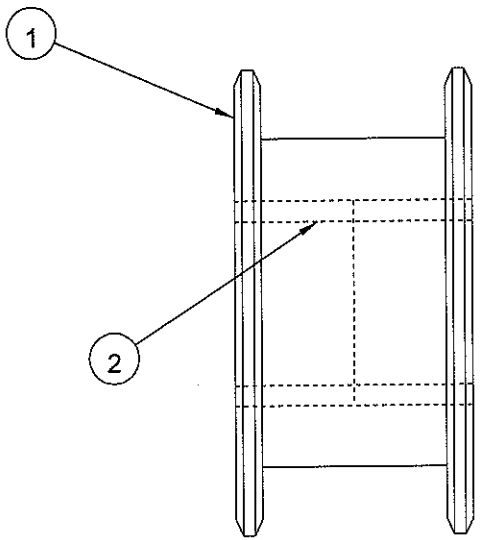
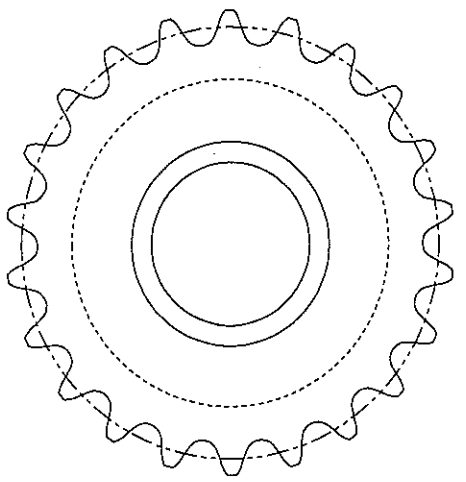


INDICATES POSITION OF LABEL  
AROUND CIRCUMFERENCE

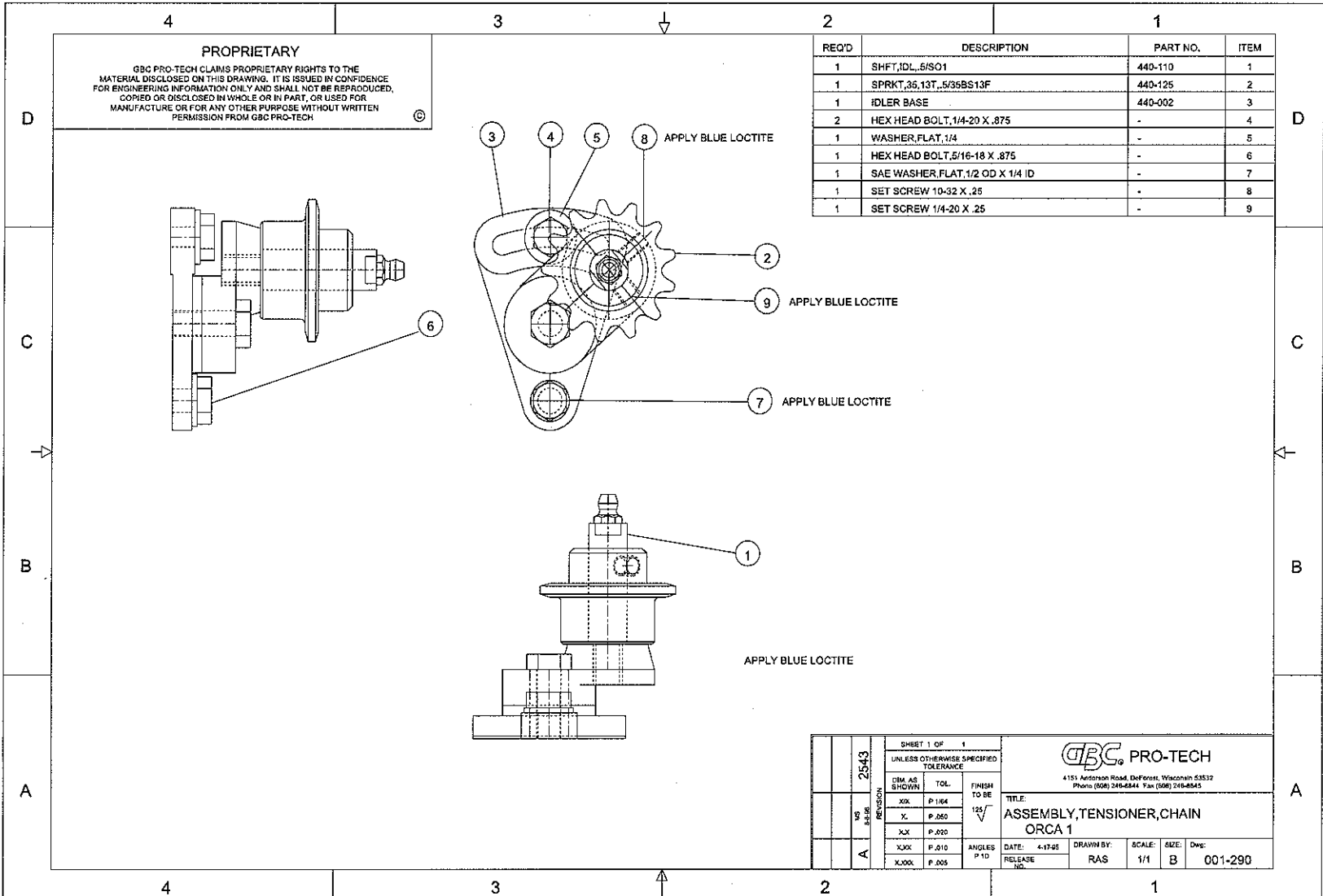


This print is the property of PRO-TECH ENGR. The information thereon is remitted in confidence.			
UNLESS OTHERWISE SPECIFIED TOLERANCE			<b>Pro-Tech Engineering</b> 2117 N. Stoughton Rd. Madison, Wisconsin 53704 Phone (608) 246-8844 Fax (608) 246-8645
DIM. AS SHOWN	TOL.	FINISH TO BE	
XX	P .1/64	125 $\sqrt{\hspace{1cm}}$	TITLE: ASSEMBLY, SHIM DISK, PULL, RIGHT ORCA I
X	P .050		
X.X	P .020	ANGLES P 1D	DATE: 3-01-95 DRAWN BY: RAS DWG SCALE: A1 Dwg: 001-252
X.XX	P .010		
X.XXX	P .005		

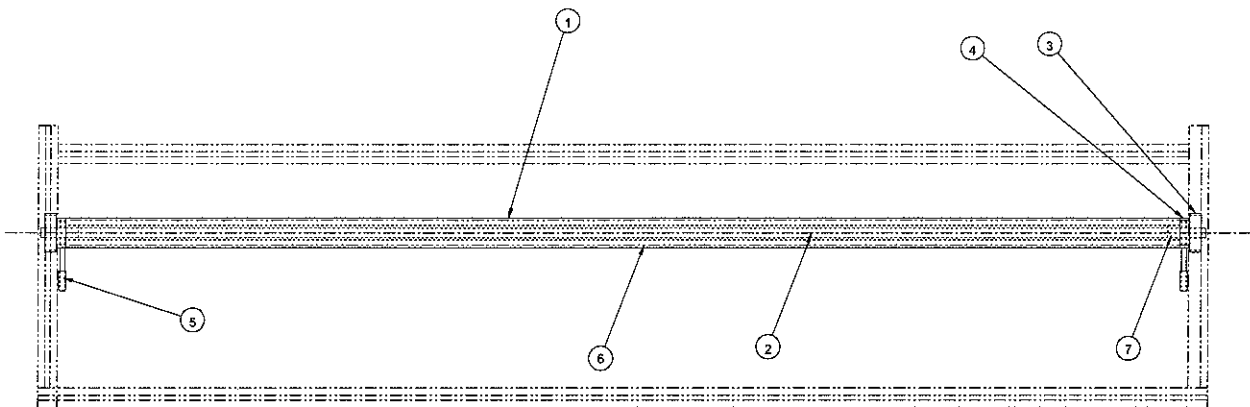
REQ'D	DESCRIPTION	PART NO.	ITEM
1	SPROCKET,DRIVE,MODIFIED	750-000	1
2	BEARING,NEEDLE	028-002	2



UNLESS OTHERWISE SPECIFIED TOLERANCE				This print is the property of PRO-TECH ENGR. The information thereon is remlitted in confidence. <b>Pro-Tech Engineering</b> 2117 N. Stoughton Rd. Madison, Wisconsin 53704 Phone (608) 246-8844 Fax (608) 246-8845			
REVISION	DIM. AS SHOWN	TOL.	FINISH TO BE	TITLE:			
	X/X	P 1/64	125√	ASSEMBLY, SPROCKET, DRIVE			
	X.	P .050		-			
	X-X	P .020					
	X.XX	P .010	ANGLES P 10	DATE:	DRAWN BY:	DWG SCALE:	Dwg:
X.XXX	P .005		4-13-95	RAS	A1	001-289	

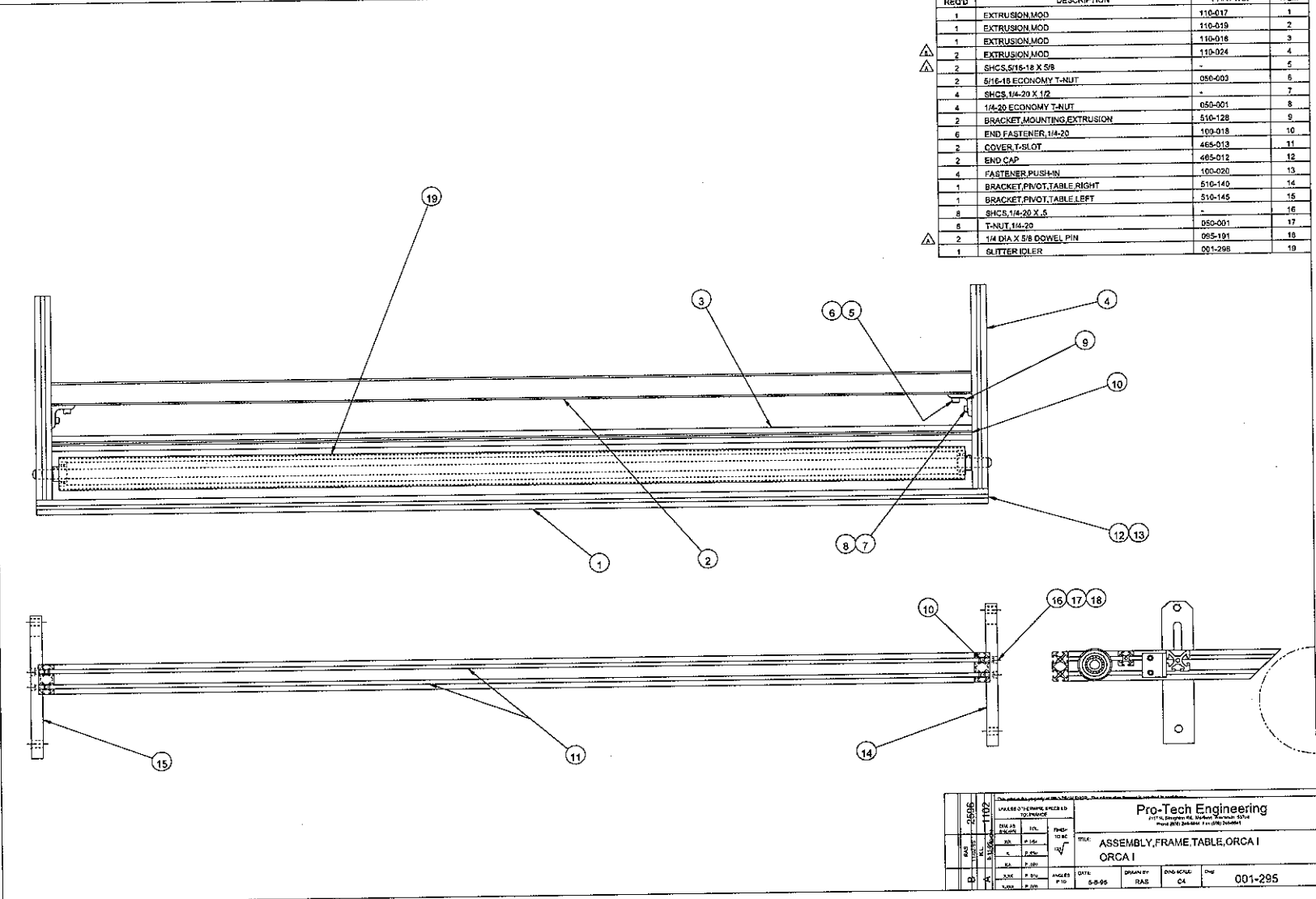


REQ'D	DESCRIPTION	PART NO.	ITEM
1	ASSEMBLY, IDLER, INFEED, PAPER	001-218	1
1	SHAFT, IDLER, INFEED, PAPER	710-054	2
2	CAM, LIFTING, IDLER	525-005	3
2	SET SCREW, 1/4-20 X .375	-	4
2	ASSEMBLY, HANDLE, CAM	001-217	5
1	IDLER, INFEED, PAPER	620-013	6
2	BUSHING, BRONZE, .5 X .75 X .625	040-026	7



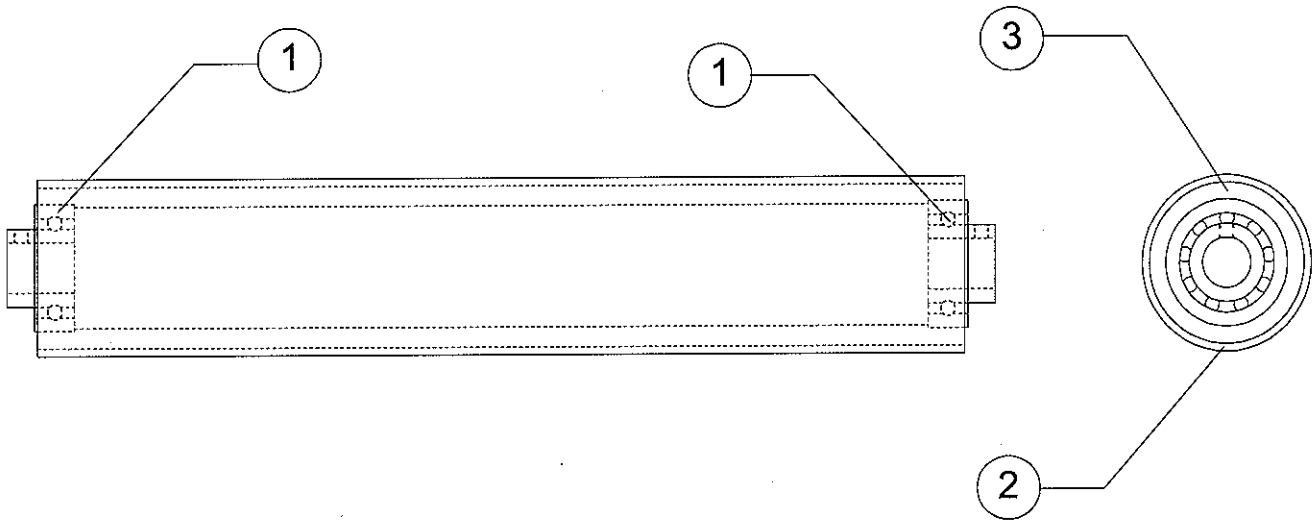
SHEET 1		GBC PRO-TECH	
UNLESS OTHERWISE SPECIFIED		4151 Alderman Blvd. Edinburg, Missouri	
TOLERANCES		Phone (520) 245-8800 Fax (803) 245-8805	
FINISH TO BE	TOL.	TITLE	
AS	P.U.	ORCA 1	
N	±	ASSEMBLY, IDLER, INFEED, PAPER	
K	±	DATE:	DRAWN BY:
2X	±	5-8-05	RAS
3X	±	ANGLES	SCALE:
	±	P.K.D.	1x C
	±		SIZE
	±		Dwg
	±		001-224

REQD	DESCRIPTION	PART NO.	ITEM
1	EXTRUSION MOD	110-017	1
1	EXTRUSION MOD	110-019	2
1	EXTRUSION MOD	110-018	3
2	EXTRUSION MOD	110-024	4
2	SHCS, 5/16-18 X 5/8	-	5
2	5/16-18 ECONOMY T-NUT	050-003	6
4	SHCS, 1/4-20 X 1/2	-	7
4	1/4-20 ECONOMY T-NUT	050-001	8
2	BRACKET, MOUNTING EXTRUSION	510-128	9
6	END FASTENER, 1/4-20	109-018	10
2	COVER T-SLOT	465-013	11
2	END CAP	465-012	12
4	FASTENER, PUSH-IN	100-020	13
1	BRACKET, PIVOT, TABLE RIGHT	510-140	14
1	BRACKET, PIVOT, TABLE LEFT	510-145	15
8	SHCS, 1/4-20 X .5	-	16
8	T-NUT, 1/4-20	050-001	17
2	1/4 DIA X 5/8 COWEL PIN	065-191	18
1	SLITTER IDLER	001-298	19



UNLESS OTHERWISE SPECIFIED TO INDICATE DIMENSIONS ARE IN INCHES DECIMALS ARE TO TWO DECIMALS FRACTIONS ARE TO SIXTEENTHS		Pro-Tech Engineering 11714, Engineers Rd., Market Township, OH 44130 Phone (216) 285-1000 Fax (216) 285-1001	
TITLE: ASSEMBLY, FRAME, TABLE, ORCA I ORCA I		DWG: 001-295	
DESIGNED BY: [Blank] CHECKED BY: [Blank] DRAWN BY: RAE DATE: 5-5-95	ENGINEER: CA DATE: [Blank]	SCALE: [Blank]	SHEET: [Blank]

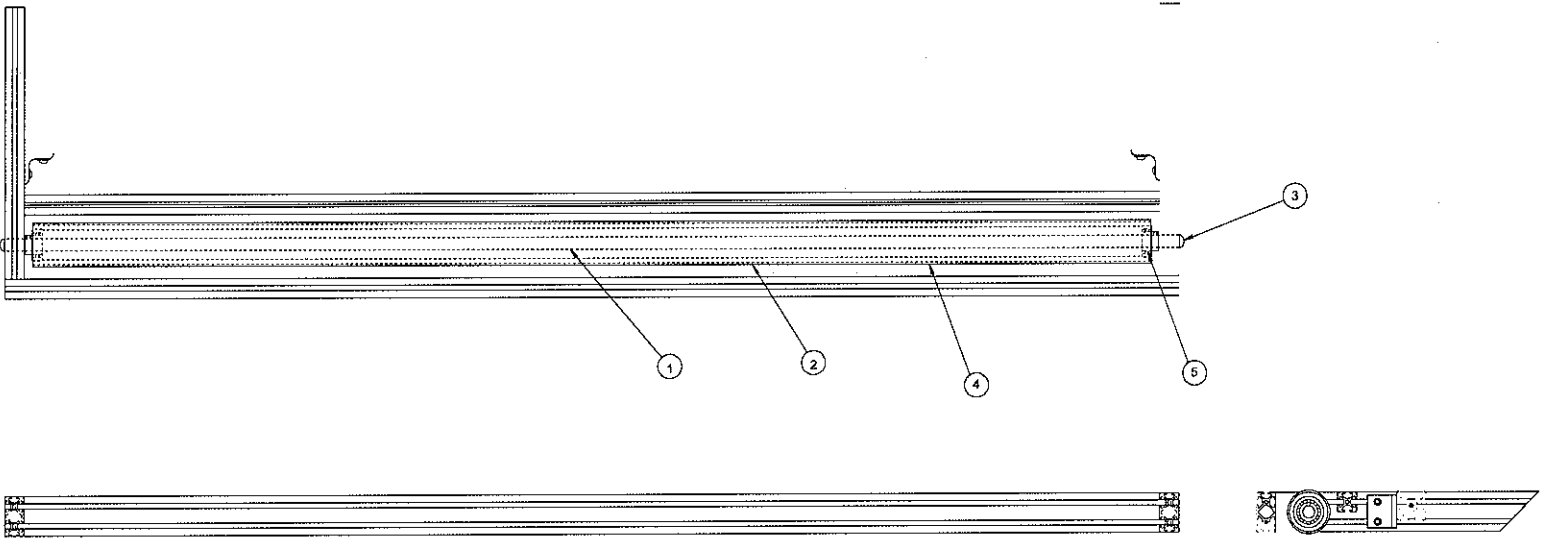
REQ'D	DESCRIPTION	PART NO.	ITEM
2	BEARING, IDLER	020-100	1
1	TUBE, SLITTER, PVC	490-001	2
1	ROLL, IDLER	620-016	3



UNITS: INCHES DIMENSIONS: DECIMALS TOLERANCE:		Pro-Tech Engineering 2117 N. Mangrove Rd. Houston, Texas 77058 Phone (281) 242-9100 Fax (281) 242-9101	
DATE: 0-09-95 DRAWN BY: RAS CHECKED BY: CI DESIGNED BY:		FILE: ASSEMBLY, IDLER, SLITTER, PAPER ORCA I 001-296	

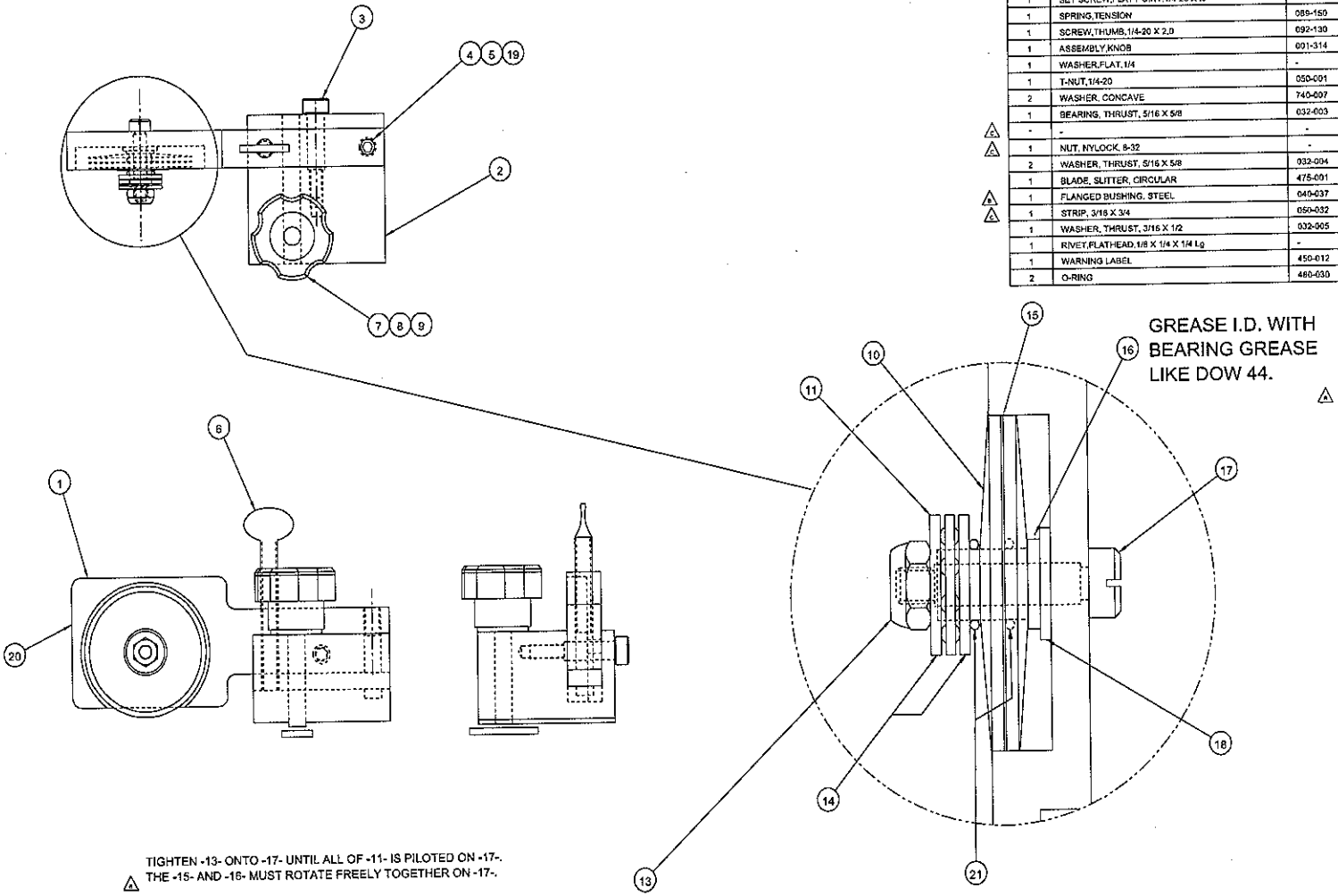


REQ'D	DESCRIPTION	PART NO.	ITEM
1	SHAFT, IDLER, SLITTER, PAPER	710-055	1
1	ASSEMBLY, IDLER, SLITTER, PAPER	001-296	2
2	BHCS, 3/8-16 X .5	-	3
1	SLITTER TUBE	490 - 001	4
2	BEARINGS IDLER	020 - 100	5



THE PARTS LISTED ARE THE PROPERTY OF PRO-TECH ENGINEERING. THE INFORMATION HEREIN IS UNCLASSIFIED.	
Pro-Tech Engineering 11000 15th Street, Suite 100 Denver, CO 80202	
ASSEMBLY, SLITTER, IDLER ORCA I	
DATE: 5-8-95 DRAWN BY: RAS CHECKED BY: C4 DESIGNED BY:	Dwg No: 001-296

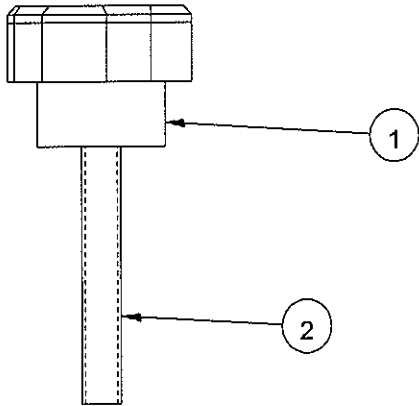
REQD	DESCRIPTION	PART NO.	ITEM
1	ARM, SLITTER	740-008	1
1	BLOCK, PIVOT, SLITTER, INFEED	740-009	2
1	BOLT, SHOULDER, 1/4, 75, 10-24	-	3
1	SET SCREW, FLAT POINT, 1/4-20 X .5	-	4
1	SPRING, TENSION	089-150	5
1	SCREW, THUMB, 1/4-20 X 2.0	092-130	6
1	ASSEMBLY KNOB	001-314	7
1	WASHER, FLAT, 1/4	-	8
1	T-NUT, 1/4-20	050-091	9
2	WASHER, CONCAVE	740-007	10
1	BEARING, THRUST, 5/16 X 5/8	092-003	11
-	-	-	12
1	NUT, NYLOCK, 9-32	-	13
2	WASHER, THRUST, 5/16 X 5/8	032-004	14
1	BLADE, SLITTER, CIRCULAR	475-001	15
1	FLANGED BUSHING, STEEL	040-037	16
1	STRIP, 3/16 X 3/4	050-032	17
1	WASHER, THRUST, 3/16 X 1/2	032-005	18
1	RIVET, FLATHEAD, 1/8 X 1/4 X 1/4 Lg	-	19
1	WARNING LABEL	450-012	20
2	O-RING	480-030	21



TIGHTEN -13- ONTO -17- UNTIL ALL OF -11- IS PILOTTED ON -17-  
 THE -15- AND -16- MUST ROTATE FREELY TOGETHER ON -17-.  
 BLUE LOCTITE -13- TO -17-.

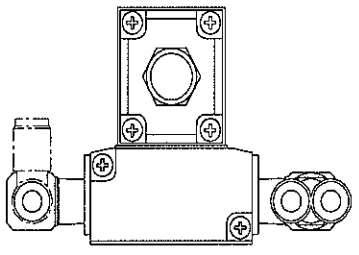
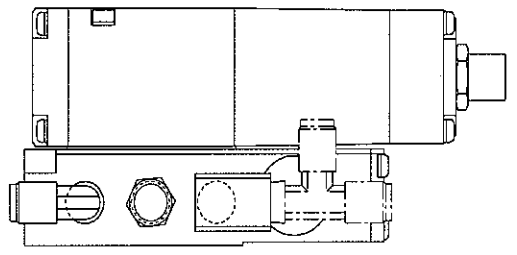
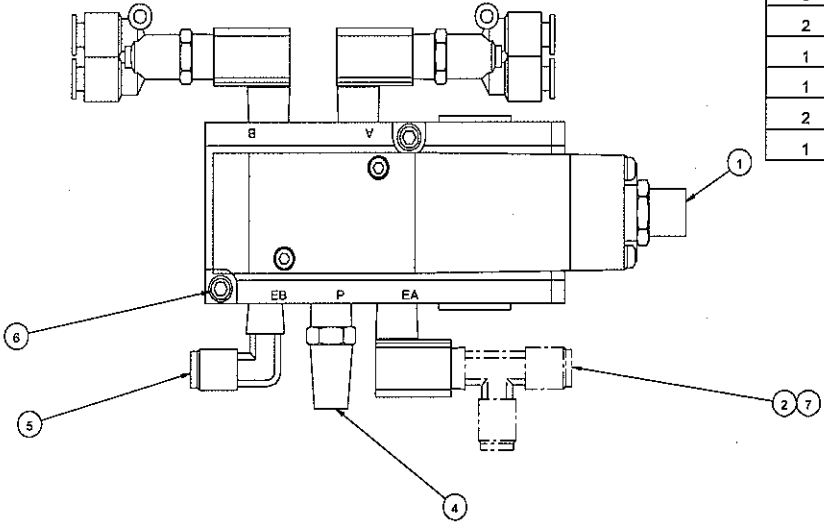
6396		3006		1123		Pro-Tech Engineering	
UNLESS OTHERWISE SPECIFIED		TOLERANCE		FINISH		1111 E. Douglas Rd., Waterbury, Vermont 05671 Phone (802) 248-2121 Fax (802) 248-2141	
INCH	±.0005	FRAMES	±.0005	ENTR	ASSEMBLY	ASSEMBLY, SLITTER, INFEED	
MM	±.010	ROSCS	±.010	ENTR	ORCA		
DATE	6-12-85	DRAWN BY	RAS	ENGR SCALE	A1	DWG	001-299

REQ'D	DESCRIPTION	PART NO.	ITEM
1	KNOB,KNURLED	465-007	1
1	SET SCREW,FLATPOINT,1/4-20 X 2.0	050-012	2



This print is the property of PRO-TECH ENGR. The information thereon is remitted in confidence.			
UNLESS OTHERWISE SPECIFIED TOLERANCE		<b>Pro-Tech Engineering</b> 2117 N. Stoughton Rd., Madison, Wisconsin 53704 Phone (608) 246-8844 Fax (608) 246-8845	
DIM. AS SHOWN	TOL.	FINISH TO BE	TITLE: ASSEMBLY, KNOB, 1/4-20 ORCA I
XX	P 1/64	125 $\sqrt{\quad}$	
X	P .050		DATE: 7-21-95
XX	P .020		
X,XX	P .010	ANGLES P 1D	DRAWN BY: RAS
X,XXX	P .005		DWG SCALE: A1
REVISION 1065 K.L. 8-7-95 A		Dwg: 001-314	

REQ'D	DESCRIPTION	PART NO.	ITEM
1	VALVE, AIR, SOLENOID	350-115	1
3	FITTING,AIR,ELBOW,1/4NPT	330-760	2
2	Y-FITTING,1/4NPT	330-310	3
1	MUFFLER, AIR	330-280	4
1	FITTING, AIR, ELBOW, MALE 1/4 NPT	330-730	5
2	CAP SCREWS, SOCKET, #10-32 X 1-1/4 LG	-	6
1	RUN TEE T4X4	330-720	7

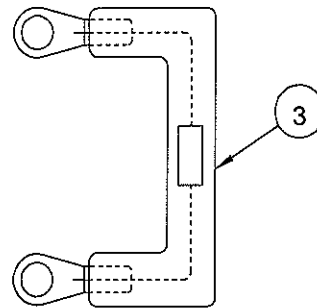
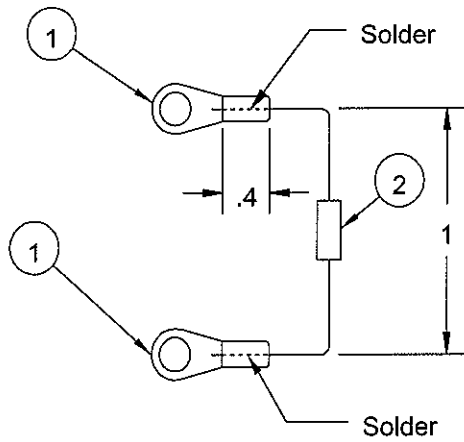


ROTATE FITTINGS AS REQUIRED FOR BEST ASSEMBLY

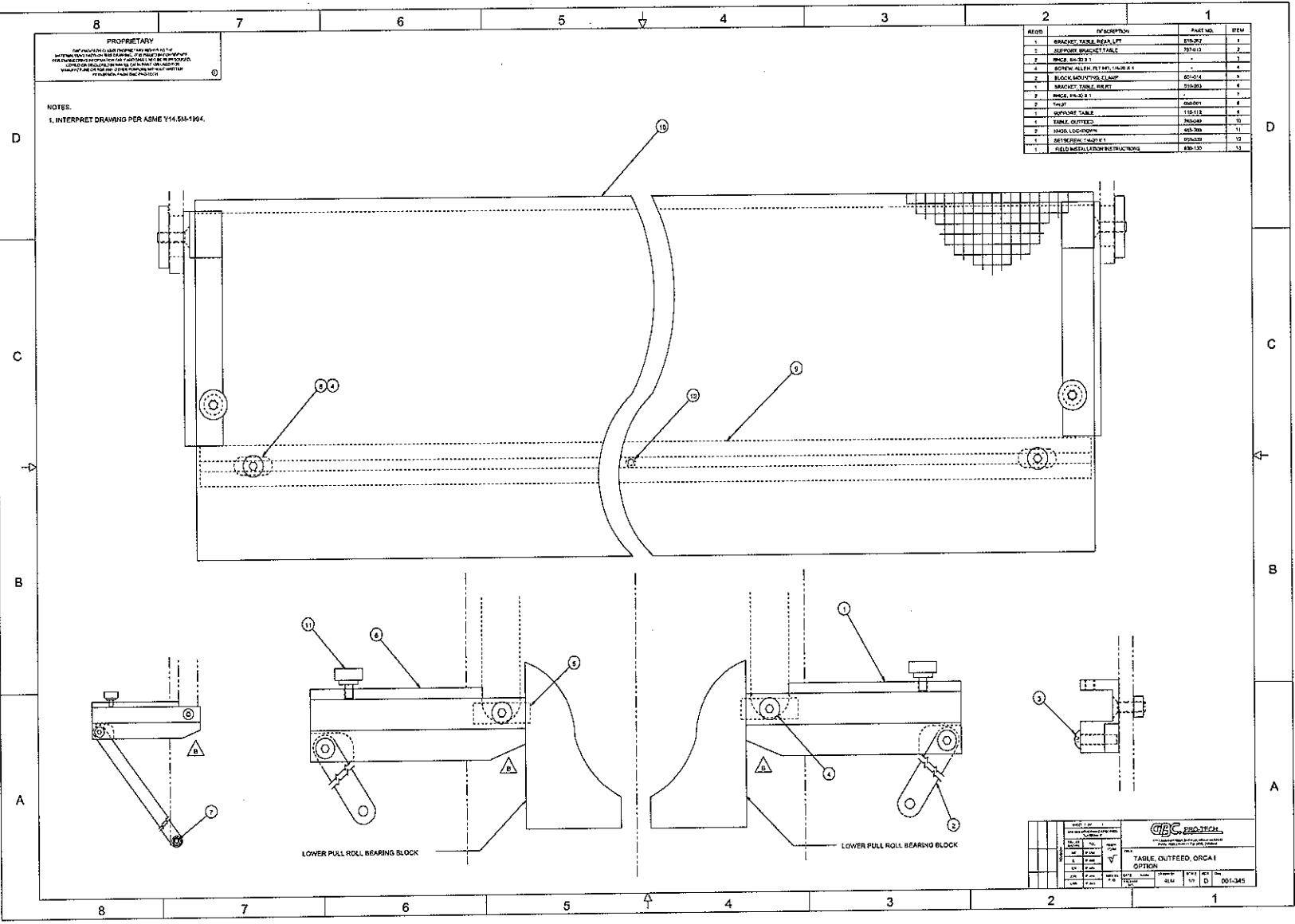
PRO-TECH ENGINEERING 10-30-85		Pro-Tech Engineering 10-30-85	
ASSEMBLY, VALVE, CONTROL		ASSEMBLY, VALVE, CONTROL	
DATE	BY	DATE	BY
10-30-85	RAS	10-30-85	RAS
001-329		001-329	

REQ'D	DESCRIPTION	PART NO.	ITEM
2	Connector ring	215-006	1
1	TVS 1.5KE400CA	185-004	2
1.25"	HEAT SHRINK TUBING, 1/4" X 250'	180-430	3

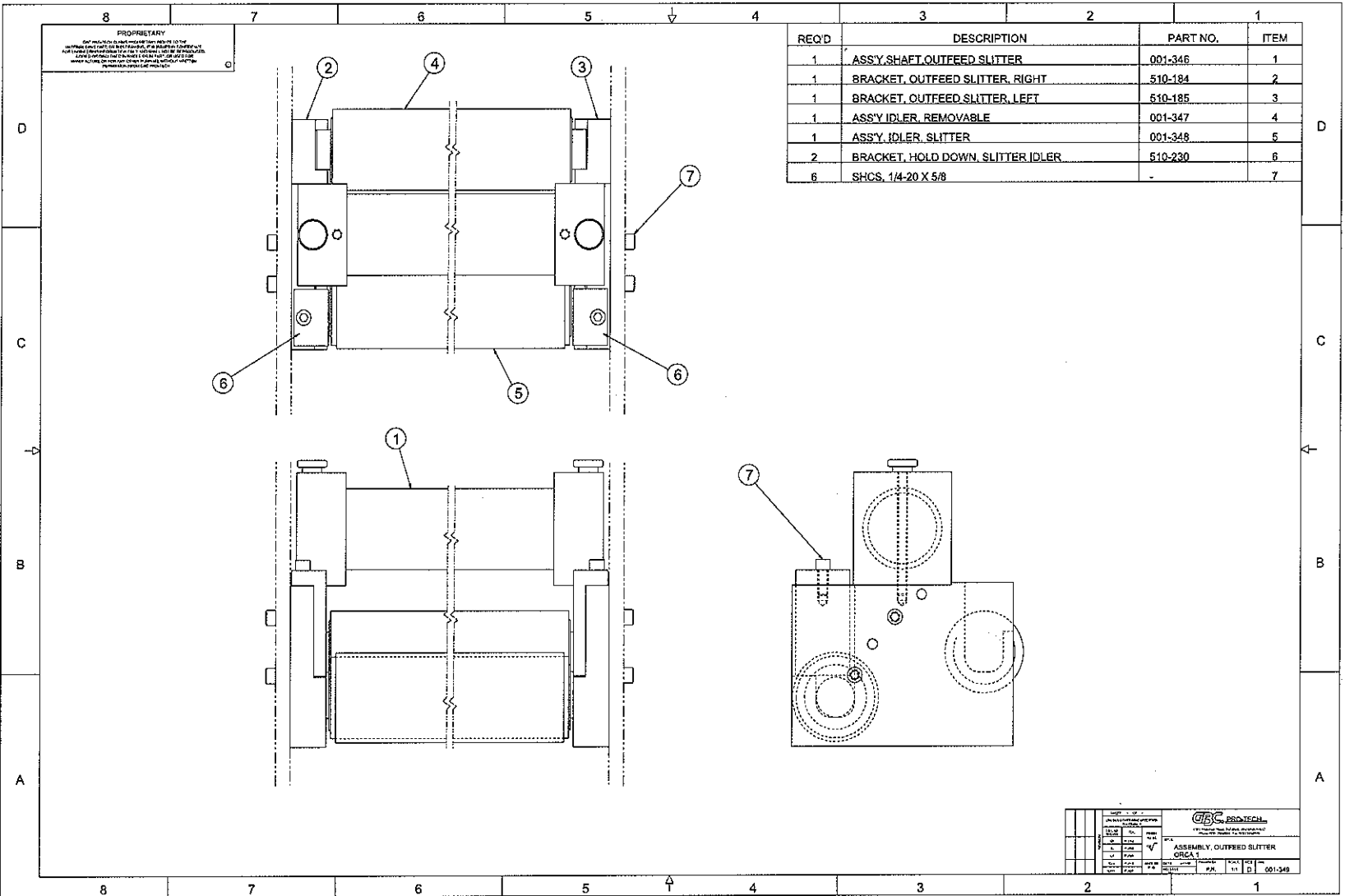
Apply a heat shrink tube after soldering



This print is the property of PRO-TECH ENGR. The information thereon is limited in confidence.									
UNLESS OTHERWISE SPECIFIED TOLERANCE					<b>Pro-Tech Engineering</b> 2117 N. Stoughton Rd. Madison, Wisconsin 53704 Phone (608) 246-8844 Fax (608) 246-8845				
DIM. AS SHOWN		TOL.	FINISH TO BE						
X/X	P	1/64	125°		TITLE: ASSY, TRANS. VOLT. SUPPRESSOR ORCA I				
X.	P	.050							
X.X	P	.020			DATE:		DRAWN BY:	DWG SCALE:	Dwg:
X.XX	P	.010	ANGLES P 1D		11-17-95		HZ	A1	001-338
X.XXX	P	.005							

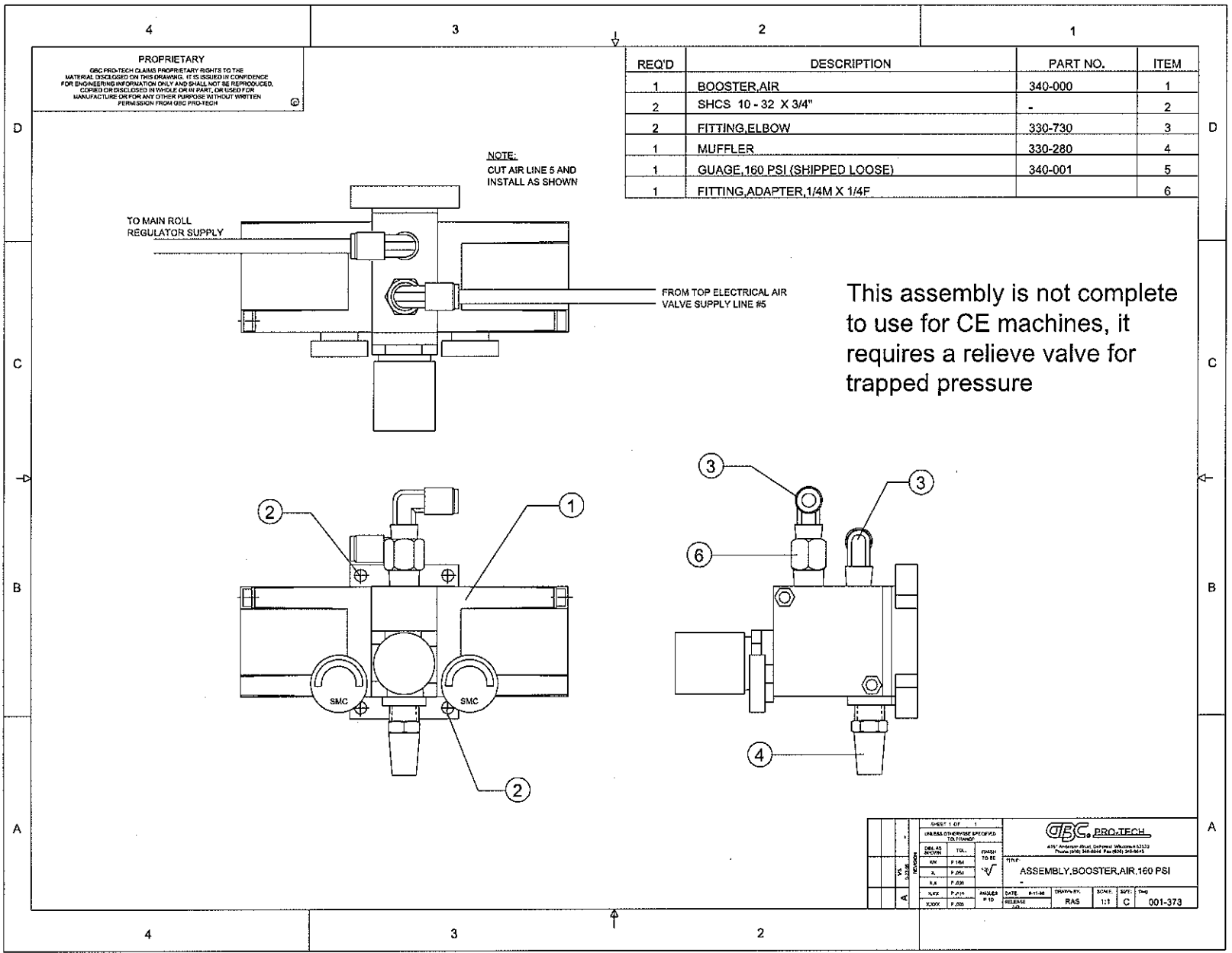


REQ'D	DESCRIPTION	PART NO.	ITEM
1	ASSY.SHAFT.OUTFEED SLITTER	001-346	1
1	BRACKET,OUTFEED SLITTER, RIGHT	510-184	2
1	BRACKET,OUTFEED SLITTER,LEFT	510-185	3
1	ASSY.IDLER, REMOVABLE	001-347	4
1	ASSY.IDLER, SLITTER	001-348	5
2	BRACKET, HOLD DOWN, SLITTER IDLER	510-230	6
6	SHCS, 1/4-20 X 5/8	-	7



PROPRIETARY  
 GBC PROTECTIVE CO. IS NOT RESPONSIBLE FOR THE REPRODUCTION OR DISTRIBUTION OF THIS DRAWING OR THE INFORMATION CONTAINED HEREIN WITHOUT THE WRITTEN PERMISSION OF GBC PROTECTIVE CO.

GBC PROTECTIVE	
DATE	001-349
REV	1
BY	
CHECKED	
APPROVED	
ASSEMBLY, OUTFEED SLITTER	
ORCA 1	
P.M.	D

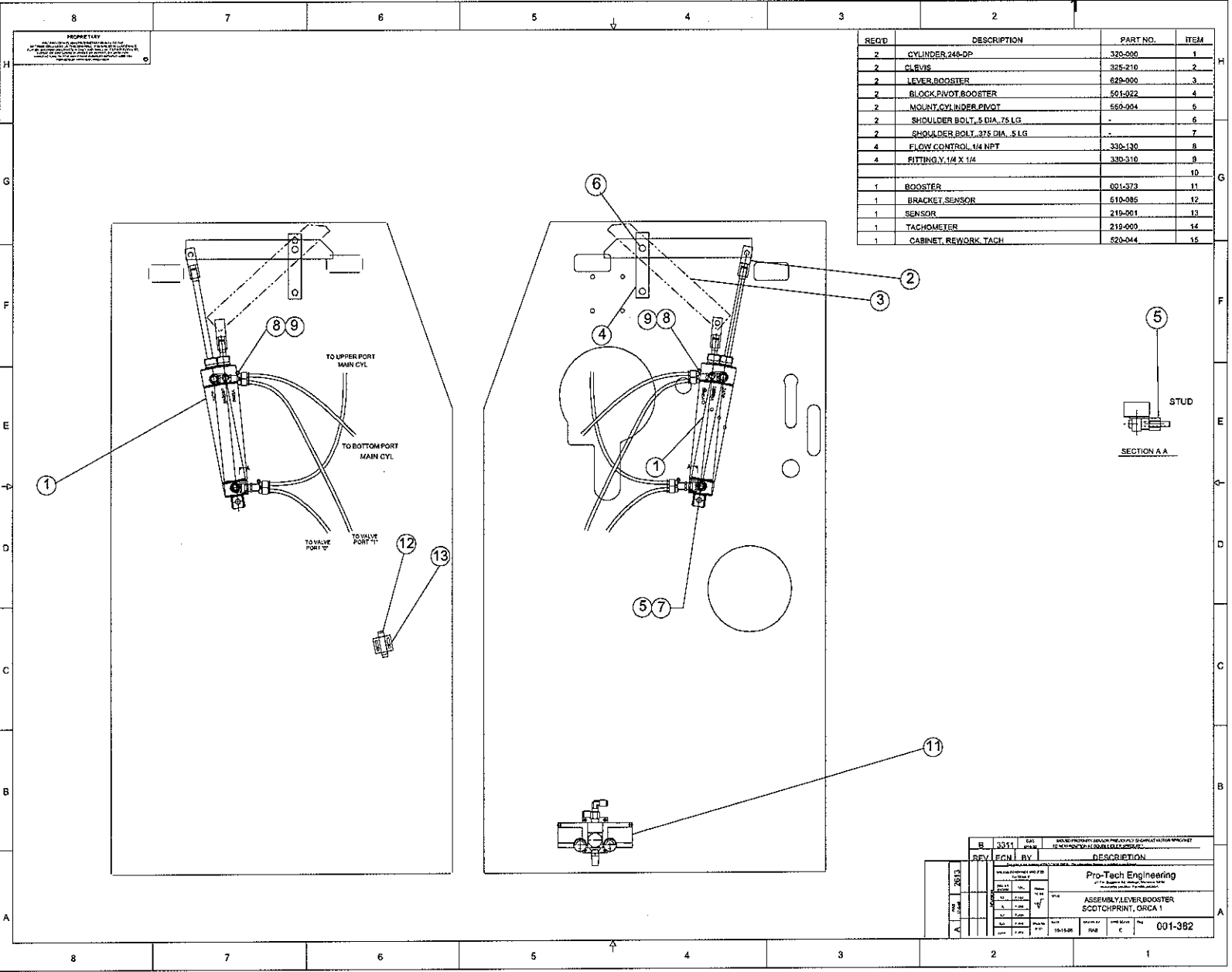


REQ'D	DESCRIPTION	PART NO.	ITEM
1	BOOSTER,AIR	340-000	1
2	SHCS 10 - 32 X 3/4"	-	2
2	FITTING,ELBOW	330-730	3
1	MUFFLER	330-280	4
1	GUAGE,160 PSI (SHIPPED LOOSE)	340-001	5
1	FITTING,ADAPTER,1/4M X 1/4F		6

This assembly is not complete to use for CE machines, it requires a relieve valve for trapped pressure

SHEET 1 OF 1 UNLESS OTHERWISE SPECIFIED TO FINISH: FINISH TO BE:			<b>GBC PRO-TECH</b> ALL DIMENSIONS ARE IN INCHES UNLESS NOTED OTHERWISE THIS PRINT IS UNCONTROLLED FOR PARTS		
DIMENSION FINISH TOLERANCE SURFACE FINISH DIMENSION FINISH TOLERANCE SURFACE FINISH	DIMENSION FINISH TOLERANCE SURFACE FINISH DIMENSION FINISH TOLERANCE SURFACE FINISH	DIMENSION FINISH TOLERANCE SURFACE FINISH DIMENSION FINISH TOLERANCE SURFACE FINISH	TR.F. ASSEMBLY,BOOSTER,AIR,160 PSI		
DATE 2000	BY RAS	CHECKED BY RAS	SCALE 1:1	APPR. C	DWG NO. 001-373

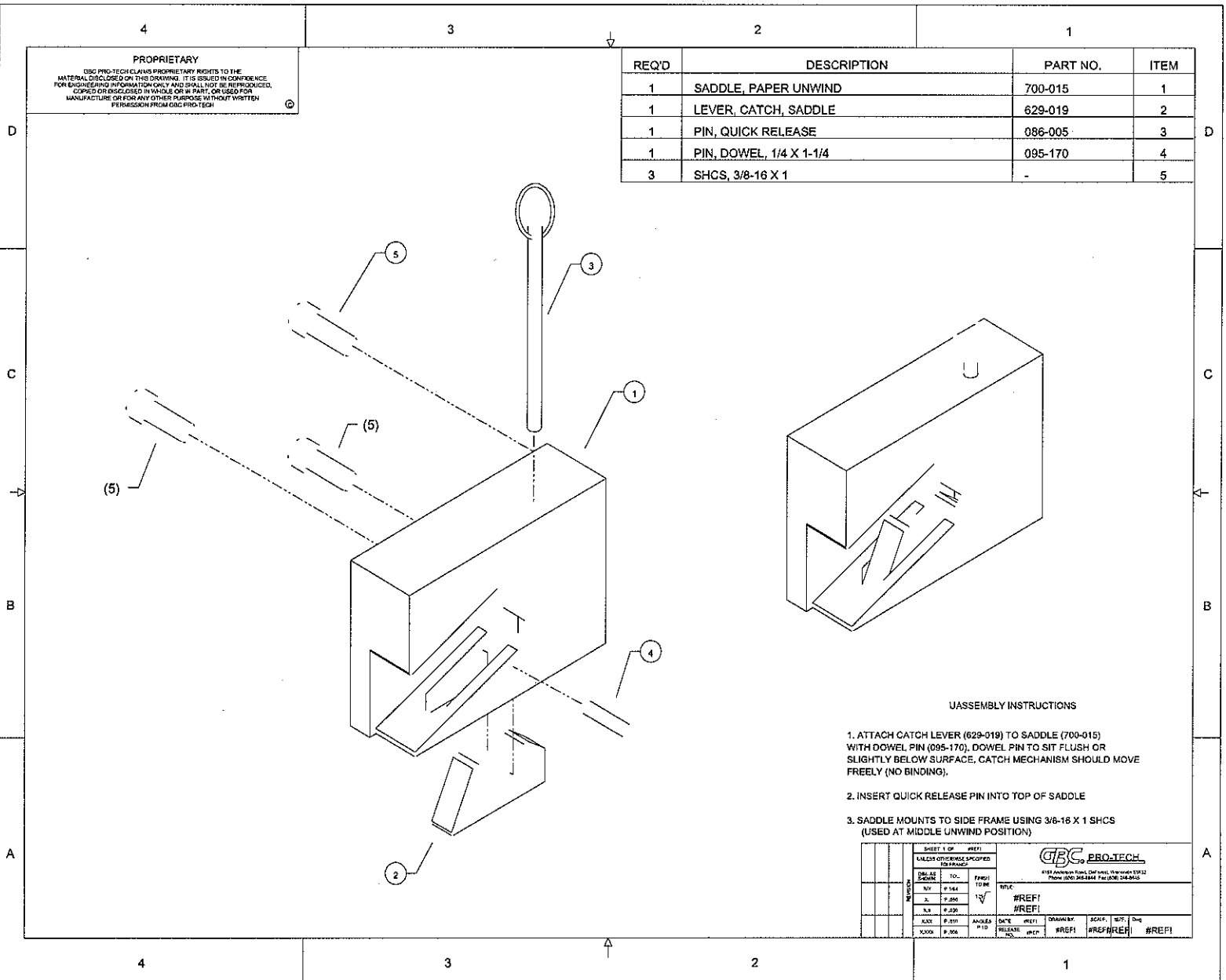
REQ'D	DESCRIPTION	PART NO.	ITEM
2	CYLINDER 248-DP	330-000	1
2	CLAVIS	325-210	2
2	LEVER BOOSTER	628-000	3
2	BLOCK PIVOT BOOSTER	501-022	4
2	MOUNT CYLINDER PIVOT	560-004	5
2	SHOULDER BOLT, 5 DIA., 75 LG.	-	6
2	SHOULDER BOLT, 3/8 DIA., 5 LG.	-	7
4	FLOW CONTROL, 1/4 NPT	330-130	8
4	FITTING, 1/4 X 1/4	330-310	9
			10
1	BOOSTER	001-373	11
1	BRACKET SENSOR	510-085	12
1	SENSOR	219-001	13
1	TACHOMETER	219-000	14
1	CABINET, REWORK, TACH	520-044	15



REV		BY		DESCRIPTION	
1				ASSEMBLY LEVER BOOSTER SCOTCHPRINT, ORCA 1	
DATE		DRAWN BY		CHECKED BY	
1993-08-05		J. B. B.		J. B. B.	
SCALE		SHEET NO.		TOTAL SHEETS	
1:1		11		15	
PROJECT NO.		JOB NO.		REV.	
001-382				0	

REQ'D	DESCRIPTION	PART NO.	ITEM
1	SADDLE, PAPER UNWIND	700-015	1
1	LEVER, CATCH, SADDLE	629-019	2
1	PIN, QUICK RELEASE	086-005	3
1	PIN, DOWEL, 1/4 X 1-1/4	095-170	4
3	SHCS, 3/8-16 X 1	-	5

**PROPRIETARY**  
 GBC PRO-TECH CLAIMS PROPRIETARY RIGHTS TO THE MATERIAL DISCLOSED ON THIS DRAWING. IT IS ISSUED IN CONFIDENCE FOR ENGINEERING INFORMATION ONLY AND SHALL NOT BE REPRODUCED, COPIED OR ENCLOSED IN WHOLE OR IN PART, OR USED FOR MANUFACTURE OR FOR ANY OTHER PURPOSE WITHOUT WRITTEN PERMISSION FROM GBC PRO-TECH



**ASSEMBLY INSTRUCTIONS**

1. ATTACH CATCH LEVER (629-019) TO SADDLE (700-015) WITH DOWEL PIN (095-170). DOWEL PIN TO SIT FLUSH OR SLIGHTLY BELOW SURFACE. CATCH MECHANISM SHOULD MOVE FREELY (NO BINDING).
2. INSERT QUICK RELEASE PIN INTO TOP OF SADDLE
3. SADDLE MOUNTS TO SIDE FRAME USING 3/8-16 X 1 SHCS (USED AT MIDDLE UNWIND POSITION)

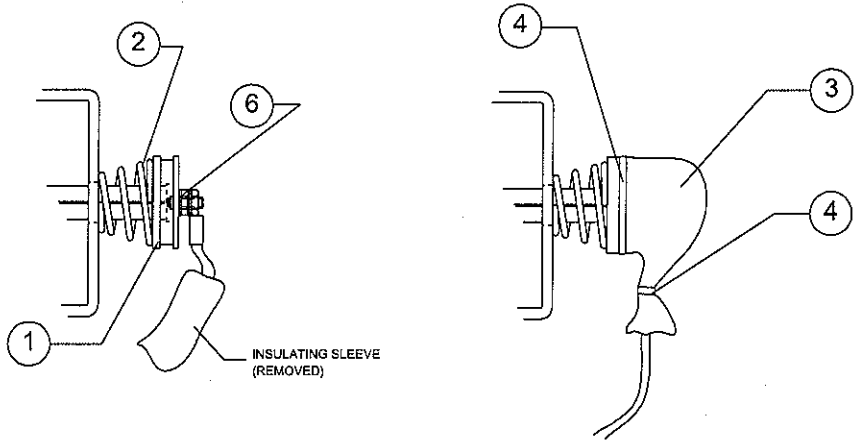
SHEET 1 OF 1		REV#1		GBC, PRO-TECH	
LATEST OFFERING SHIPPED TO FRANCE		DATE		488 American Road, Oak Brook, Illinois 60132 Phone (630) 264-8844 Fax (630) 264-8845	
DATE	TO:	FROM:	TITLE:	#REF#	
11/14	F.144			#REF#	
11/14	F.150			#REF#	
11/14	F.150			#REF#	
11/14	F.150			#REF#	
11/14	F.150			#REF#	
11/14	F.150			#REF#	
11/14	F.150			#REF#	
11/14	F.150			#REF#	
11/14	F.150			#REF#	

REQ'D	DESCRIPTION	PART NO.	ITEM
4	SPACER, HEATER SPRING	755-061	1
4	SPRING	089-022	2
-	SLEEVE, INSULATING	180-006	3
8	CABLE TIE, 8"	STOCK	4
1	INSTRUCTIONS, HEATER TENSION	820-063	5
4	#10 EXTERNAL LOCK WASHERS	-	6

PROPRIETARY  
 GBC PRO-TECH CLAIMS PROPRIETARY RIGHTS TO  
 MATERIAL DISCLOSED ON THIS DRAWING. IT IS ISSUED BY  
 FOR ENGINEERING INFORMATION ONLY AND SHALL NOT BE  
 COPIED OR DISCLOSED OR REPRODUCED IN PART, OR USED  
 MANUFACTURE OR FOR ANOTHER PURPOSE WITHOUT  
 PERMISSION FROM GBC PRO-  
 TECH

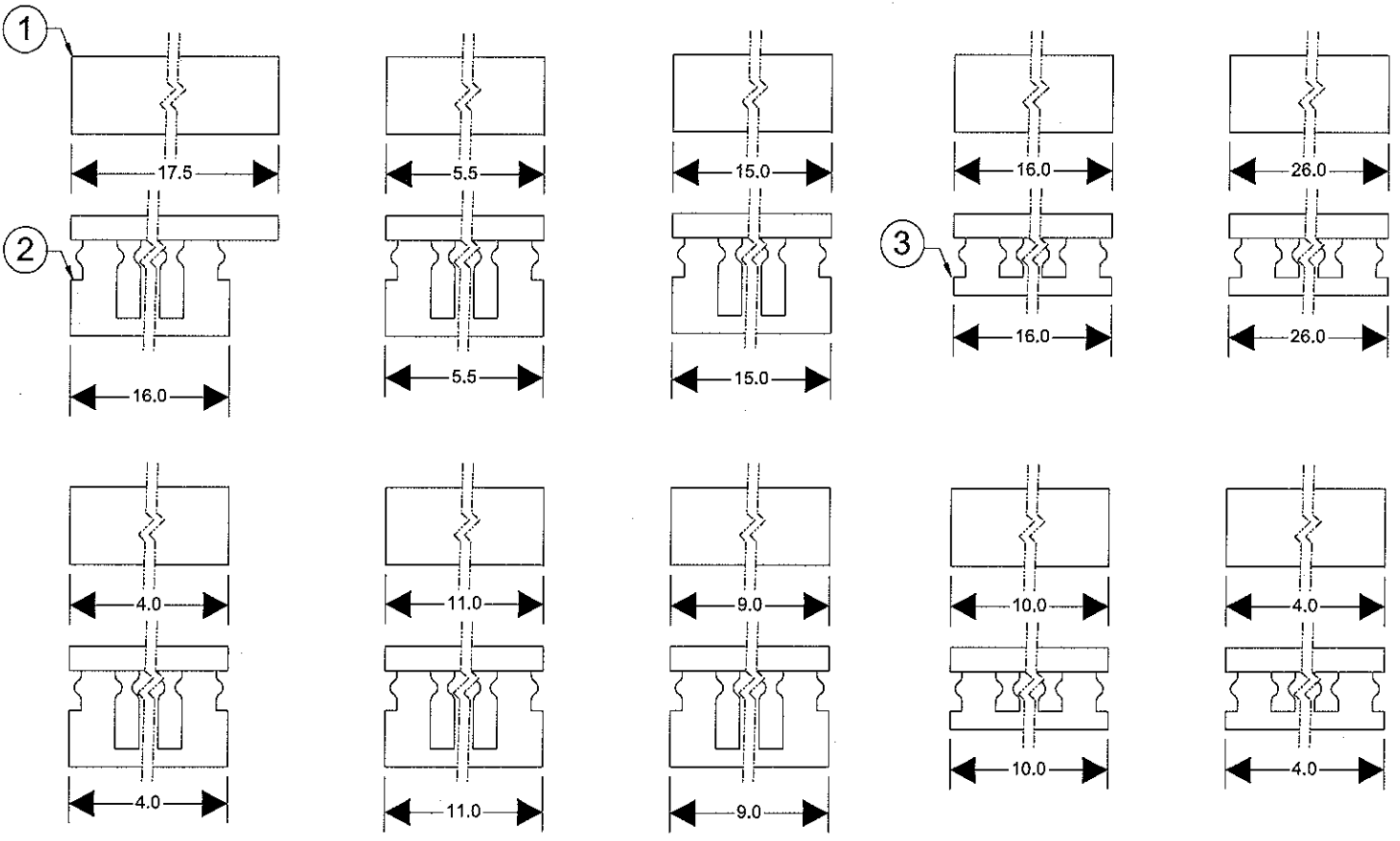
33735

NOTES:  
 1. PARTS ARE SHIPPED LOOSE.



3148 JH 7/20/98 A	SHEET 1937 OF -			 4151 Anderson Road, DeForest, Wisconsin 53532 Phone (608) 246-8844 Fax (608) 246-8645			
	UNLESS OTHERWISE SPECIFIED TOLERANCE						
	DIM. AS SHOWN	TOL.	FINISH TO BE	KIT, HEATER TENSION ORCA I, ORCA I SP			
	X/X	P 1/64	125√				
	X.	P .050		DATE: 3-21-98	DRAWN BY: BJT	SCALE: 1:1	SIZE: A
X.X	P .020		RELEASE NO. 1937				
X.XX	P .010	ANGLES P 1D					
X.XXX	P .005						

REQ'D	DESCRIPTION	PART NO.	ITEM
-	WIRE DUCT, 1" COVER, GREY	180-130	1
-	WIRE DUCT, 1" X 1.5" WITH ADHESIVE	180-140	2
-	WIRE DUCT, 1" X 1" CHANNEL WITH ADHESIVE	180-110	3



UNLESS OTHERWISE SPECIFIED TOLERANCES DIMENSION FINISH TO BE		Pro-Tech Engineering 2117 L. Sanguier Rd., Markham, Ontario L3R 9Y6 Phone (905) 363-4341 Fax (905) 363-8546	
XX P.154 X P.250 XX P.252 XX P.253 XXX P.254	TOL. P.154 P.250 P.252 P.253 P.254	FINISH TO BE ✓	TITLE: DUCT, WIRE, SET, MAIN CHASSIS ORCA I
ANNOLES P.10 P.10	DATE: 07-10-95	DRAWN BY: RLM	DWG SCALE: C1 Dwg. 180-150