



ORCA III RU_T Parts List

GBC IS AN ACCO BRANDS COMPANY



8.0 Illustrated Parts

This section is laid out in a two page format to provide better viewing of parts and easier reading of part numbers.

For parts not illustrated, please call your regional service manager or National Service Parts for assistance at 1-800-790-7787.

Items not illustrated ;

Operations Manual: 930 - 062

Electrical Schematic: 810 - 080

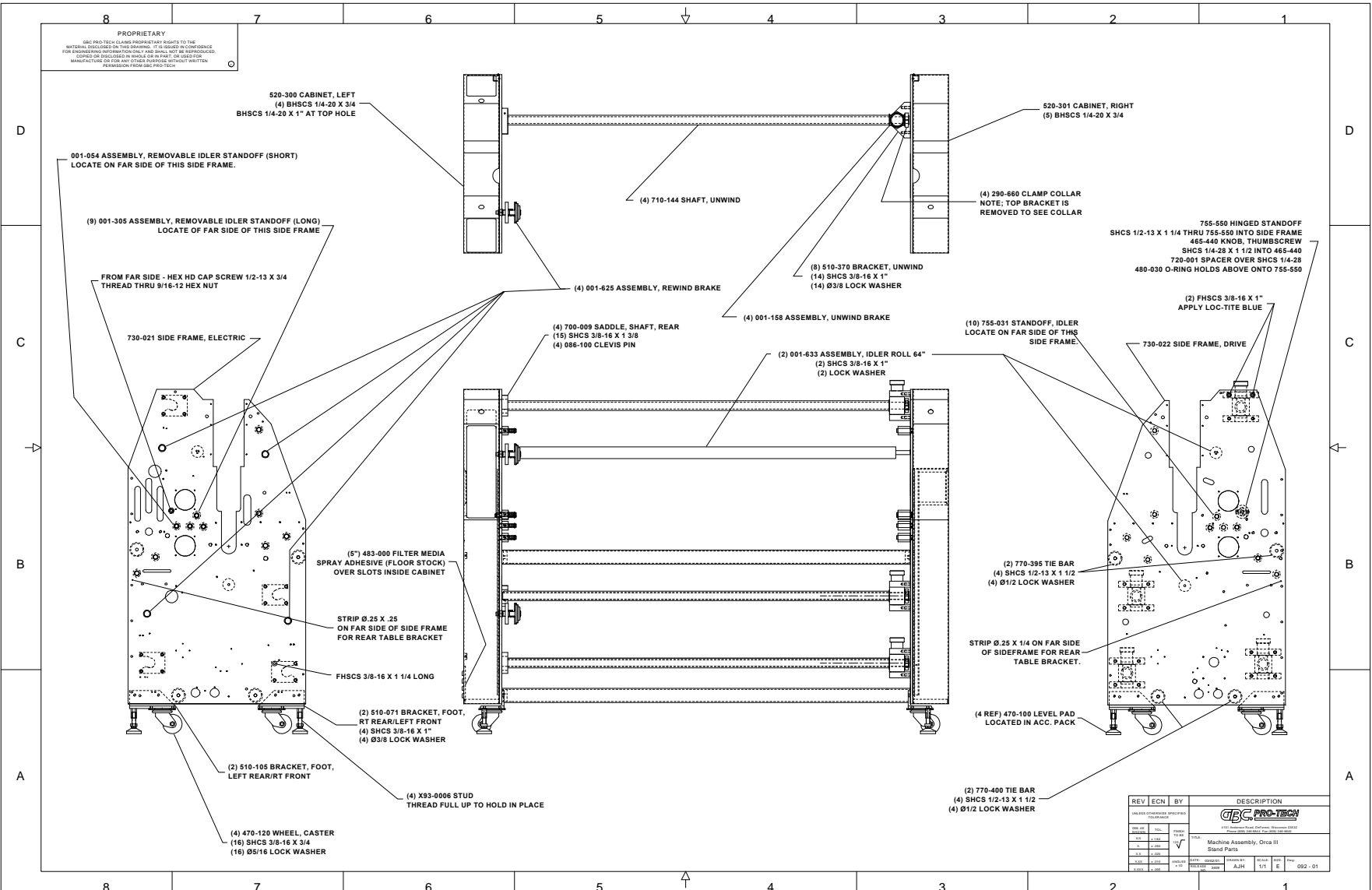
Pneumatic Diagram: 830 - 003

Cables: 280 - 046

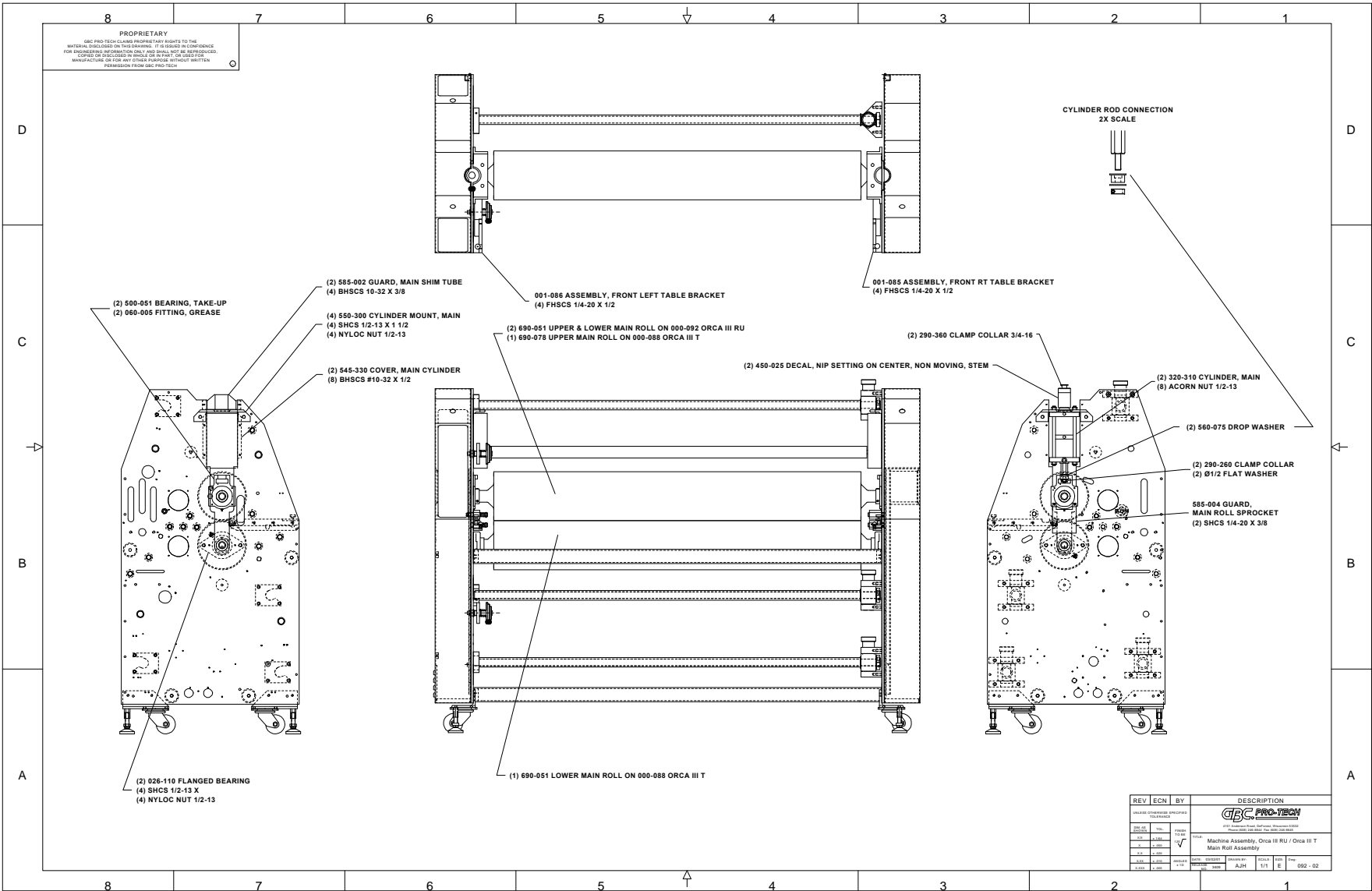
List of illustrations;

Drawing number	Description
092 - 01	Stand parts assembly
092 - 02	Main roll assembly
092 - 03	Pull roll assembly
092 - 04	Chain drive assembly
092 - 05	Cooling assembly
092 - 06	Pneumatic assembly
092 - 07	Electrical assembly
092 - 08	Electrical connections
092 - 09	Final assembly
001 - 006	Idler, paper infeed assembly
001 - 054	Stand off, low profile, removable idler
001 - 058	Cylinder, pull roll, right assembly
001 - 059	Cylinder, pull roll, left assembly
001 - 083	Small table assembly
001 - 085	Front table bracket, right assembly
001 - 086	Front table bracket, left assembly
001 - 087	Rear table bracket, right assembly
001 - 088	Rear table bracket, left assembly

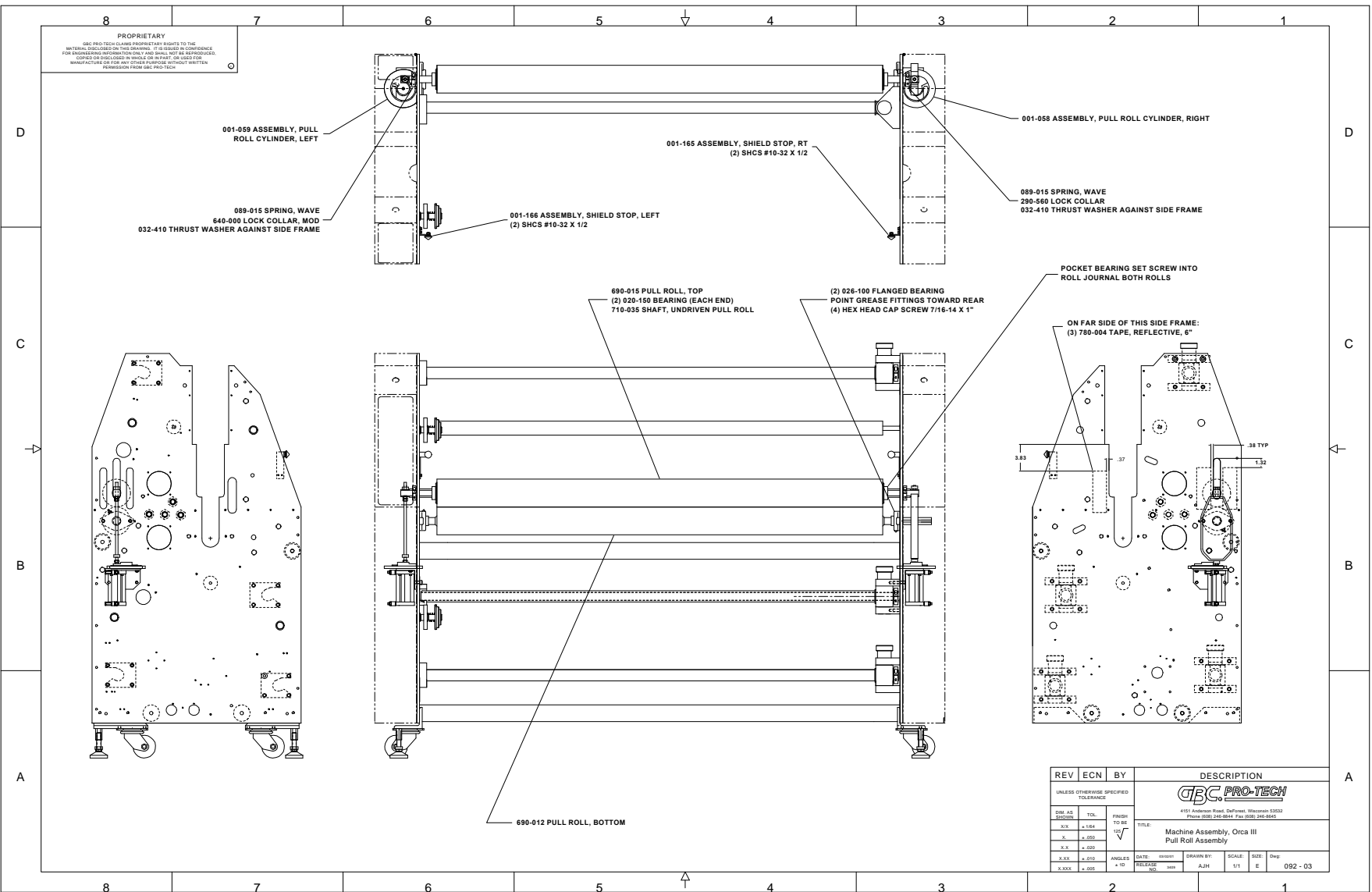
Drawing number	Description
001 - 096	Chain tensioner assembly
001 - 102	Adjustable idler sprocket assembly
001 - 109	Slitter assembly, hooked
001 - 117	Front control panel assembly
001 - 121	Rear control panel assembly
001 - 122	Input/ output slitter assembly
001 - 123	Slitter idler assembly
001 - 158	Unwind brake assembly
001 - 164	Main roll shield assembly
001 - 165	Shield stop bracket assembly, right
001 - 166	Shield stop bracket assembly, left
001 - 225	Noise filter assembly
001 - 226	Removable idler assembly
001 - 231	Main chassis panduit assembly
001 - 242	Adjustable idler sprocket assembly, outer
001 - 246	Top drive side heater bracket assembly
001 - 259	Safety label kit assembly
001 - 285	Upper and lower heater bracket assembly
001 - 286	Bottom drive side heater bracket assembly
001 - 305	Removable idler stand-off assembly
001 - 601	Saddle side core gripper assembly
001 - 602	Pivot side core gripper assembly
001 - 625	Rewind brake assembly
001 - 626	Rewind drive assembly
001 - 633	Permanent idler assembly
001 - 639	Accessory pack assembly
001 - 640	Electrical panel assembly

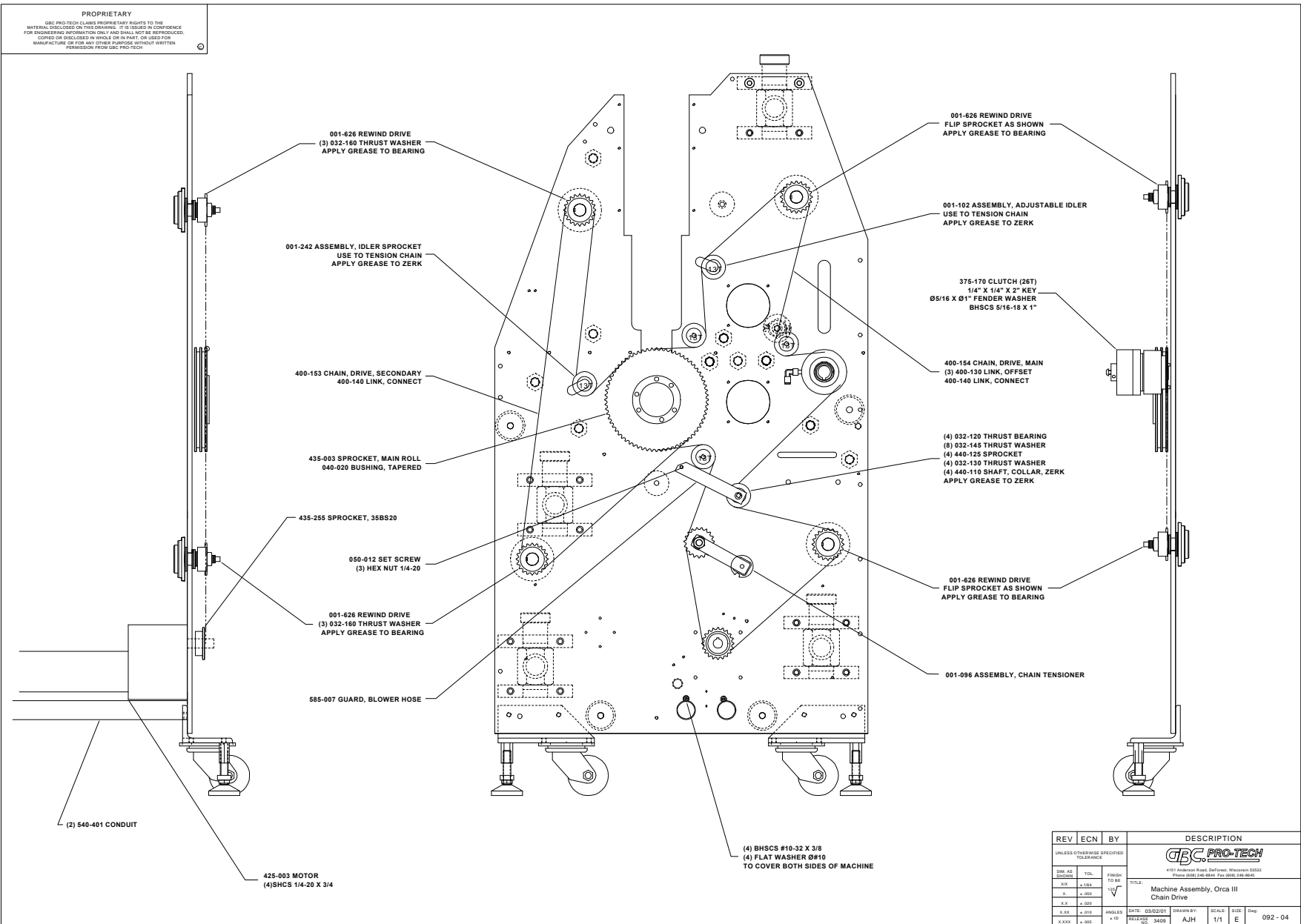


REV	ECN	BY	DESCRIPTION
0001	0001	ALJ	Machine Assembly, Orca III Stand Parts
0002	0001	ALJ	Machine Assembly, Orca III Stand Parts
0003	0001	ALJ	Machine Assembly, Orca III Stand Parts
0004	0001	ALJ	Machine Assembly, Orca III Stand Parts
0005	0001	ALJ	Machine Assembly, Orca III Stand Parts
0006	0001	ALJ	Machine Assembly, Orca III Stand Parts
0007	0001	ALJ	Machine Assembly, Orca III Stand Parts
0008	0001	ALJ	Machine Assembly, Orca III Stand Parts
0009	0001	ALJ	Machine Assembly, Orca III Stand Parts
0010	0001	ALJ	Machine Assembly, Orca III Stand Parts
0011	0001	ALJ	Machine Assembly, Orca III Stand Parts
0012	0001	ALJ	Machine Assembly, Orca III Stand Parts
0013	0001	ALJ	Machine Assembly, Orca III Stand Parts
0014	0001	ALJ	Machine Assembly, Orca III Stand Parts
0015	0001	ALJ	Machine Assembly, Orca III Stand Parts
0016	0001	ALJ	Machine Assembly, Orca III Stand Parts
0017	0001	ALJ	Machine Assembly, Orca III Stand Parts
0018	0001	ALJ	Machine Assembly, Orca III Stand Parts
0019	0001	ALJ	Machine Assembly, Orca III Stand Parts
0020	0001	ALJ	Machine Assembly, Orca III Stand Parts
0021	0001	ALJ	Machine Assembly, Orca III Stand Parts
0022	0001	ALJ	Machine Assembly, Orca III Stand Parts
0023	0001	ALJ	Machine Assembly, Orca III Stand Parts
0024	0001	ALJ	Machine Assembly, Orca III Stand Parts
0025	0001	ALJ	Machine Assembly, Orca III Stand Parts
0026	0001	ALJ	Machine Assembly, Orca III Stand Parts
0027	0001	ALJ	Machine Assembly, Orca III Stand Parts
0028	0001	ALJ	Machine Assembly, Orca III Stand Parts
0029	0001	ALJ	Machine Assembly, Orca III Stand Parts
0030	0001	ALJ	Machine Assembly, Orca III Stand Parts
0031	0001	ALJ	Machine Assembly, Orca III Stand Parts
0032	0001	ALJ	Machine Assembly, Orca III Stand Parts
0033	0001	ALJ	Machine Assembly, Orca III Stand Parts
0034	0001	ALJ	Machine Assembly, Orca III Stand Parts
0035	0001	ALJ	Machine Assembly, Orca III Stand Parts
0036	0001	ALJ	Machine Assembly, Orca III Stand Parts
0037	0001	ALJ	Machine Assembly, Orca III Stand Parts
0038	0001	ALJ	Machine Assembly, Orca III Stand Parts
0039	0001	ALJ	Machine Assembly, Orca III Stand Parts
0040	0001	ALJ	Machine Assembly, Orca III Stand Parts
0041	0001	ALJ	Machine Assembly, Orca III Stand Parts
0042	0001	ALJ	Machine Assembly, Orca III Stand Parts
0043	0001	ALJ	Machine Assembly, Orca III Stand Parts
0044	0001	ALJ	Machine Assembly, Orca III Stand Parts
0045	0001	ALJ	Machine Assembly, Orca III Stand Parts
0046	0001	ALJ	Machine Assembly, Orca III Stand Parts
0047	0001	ALJ	Machine Assembly, Orca III Stand Parts
0048	0001	ALJ	Machine Assembly, Orca III Stand Parts
0049	0001	ALJ	Machine Assembly, Orca III Stand Parts
0050	0001	ALJ	Machine Assembly, Orca III Stand Parts
0051	0001	ALJ	Machine Assembly, Orca III Stand Parts
0052	0001	ALJ	Machine Assembly, Orca III Stand Parts
0053	0001	ALJ	Machine Assembly, Orca III Stand Parts
0054	0001	ALJ	Machine Assembly, Orca III Stand Parts
0055	0001	ALJ	Machine Assembly, Orca III Stand Parts
0056	0001	ALJ	Machine Assembly, Orca III Stand Parts
0057	0001	ALJ	Machine Assembly, Orca III Stand Parts
0058	0001	ALJ	Machine Assembly, Orca III Stand Parts
0059	0001	ALJ	Machine Assembly, Orca III Stand Parts
0060	0001	ALJ	Machine Assembly, Orca III Stand Parts
0061	0001	ALJ	Machine Assembly, Orca III Stand Parts
0062	0001	ALJ	Machine Assembly, Orca III Stand Parts
0063	0001	ALJ	Machine Assembly, Orca III Stand Parts
0064	0001	ALJ	Machine Assembly, Orca III Stand Parts
0065	0001	ALJ	Machine Assembly, Orca III Stand Parts
0066	0001	ALJ	Machine Assembly, Orca III Stand Parts
0067	0001	ALJ	Machine Assembly, Orca III Stand Parts
0068	0001	ALJ	Machine Assembly, Orca III Stand Parts
0069	0001	ALJ	Machine Assembly, Orca III Stand Parts
0070	0001	ALJ	Machine Assembly, Orca III Stand Parts
0071	0001	ALJ	Machine Assembly, Orca III Stand Parts
0072	0001	ALJ	Machine Assembly, Orca III Stand Parts
0073	0001	ALJ	Machine Assembly, Orca III Stand Parts
0074	0001	ALJ	Machine Assembly, Orca III Stand Parts
0075	0001	ALJ	Machine Assembly, Orca III Stand Parts
0076	0001	ALJ	Machine Assembly, Orca III Stand Parts
0077	0001	ALJ	Machine Assembly, Orca III Stand Parts
0078	0001	ALJ	Machine Assembly, Orca III Stand Parts
0079	0001	ALJ	Machine Assembly, Orca III Stand Parts
0080	0001	ALJ	Machine Assembly, Orca III Stand Parts
0081	0001	ALJ	Machine Assembly, Orca III Stand Parts
0082	0001	ALJ	Machine Assembly, Orca III Stand Parts
0083	0001	ALJ	Machine Assembly, Orca III Stand Parts
0084	0001	ALJ	Machine Assembly, Orca III Stand Parts
0085	0001	ALJ	Machine Assembly, Orca III Stand Parts
0086	0001	ALJ	Machine Assembly, Orca III Stand Parts
0087	0001	ALJ	Machine Assembly, Orca III Stand Parts
0088	0001	ALJ	Machine Assembly, Orca III Stand Parts
0089	0001	ALJ	Machine Assembly, Orca III Stand Parts
0090	0001	ALJ	Machine Assembly, Orca III Stand Parts
0091	0001	ALJ	Machine Assembly, Orca III Stand Parts
0092	0001	ALJ	Machine Assembly, Orca III Stand Parts

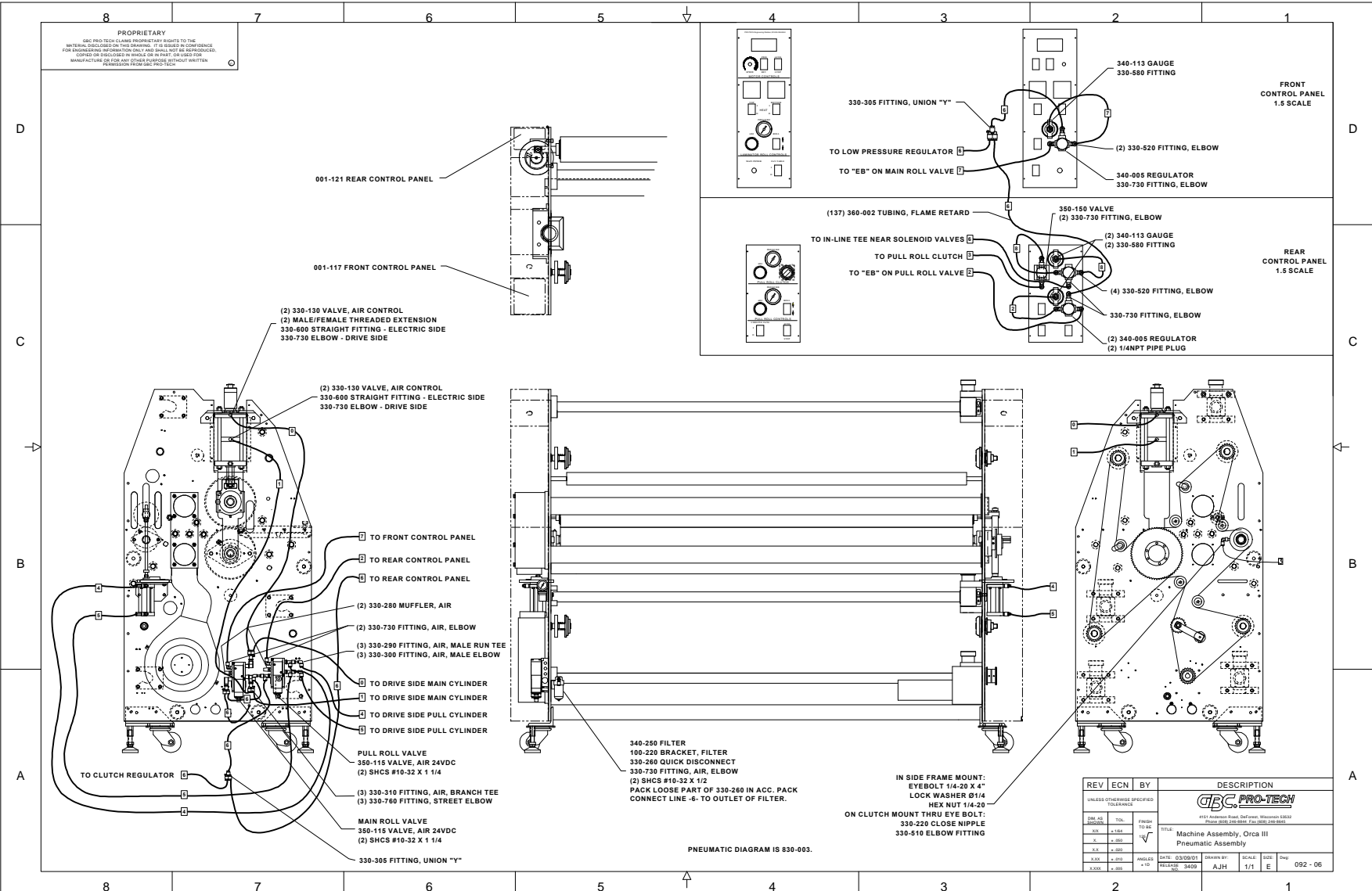


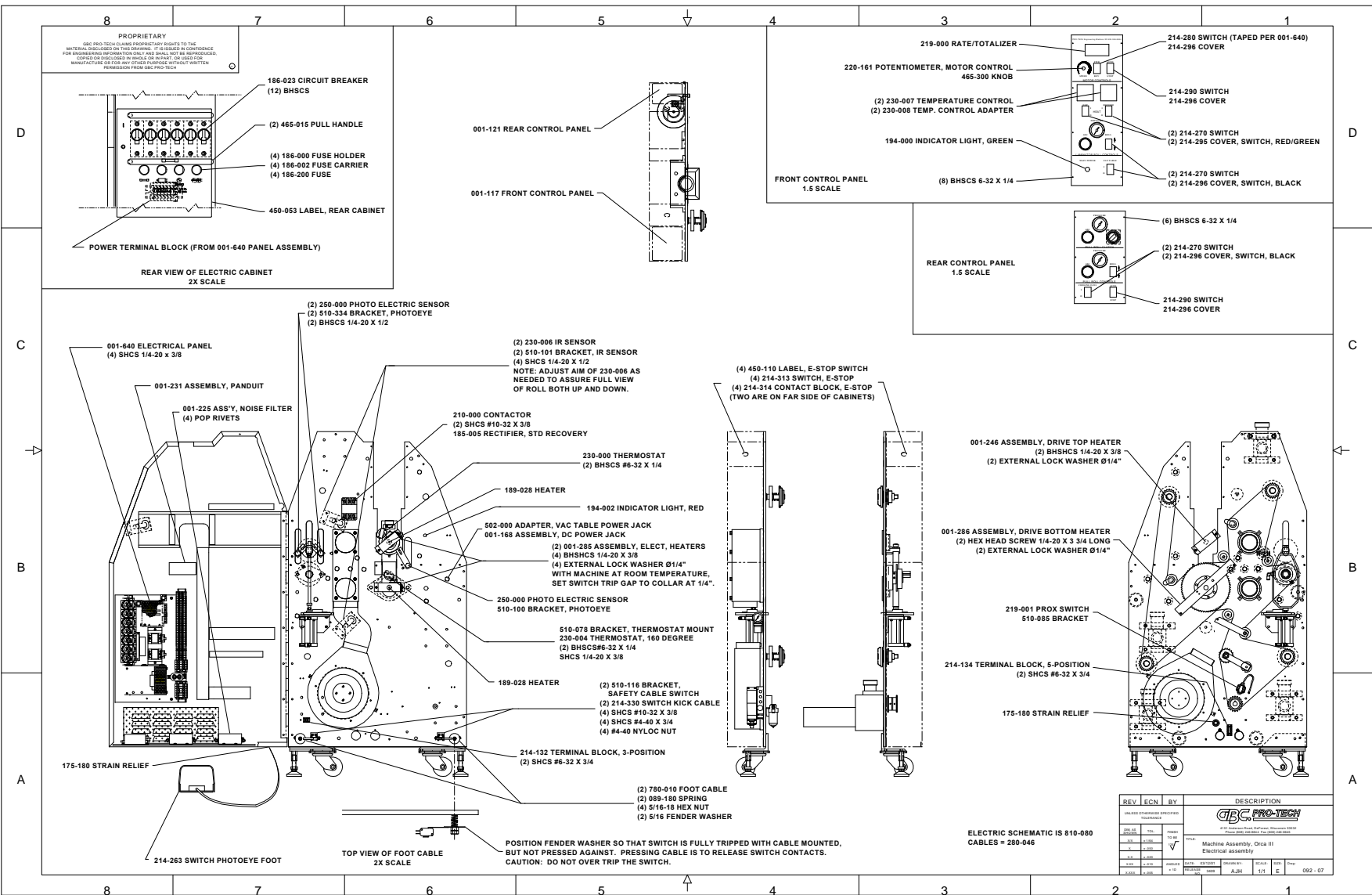
REV	ECN	BY	DESCRIPTION
001	001	ALJH	Machine Assembly, Orca III RU / Orca III T
002	001	ALJH	Main Roll Assembly
003	001	ALJH	
004	001	ALJH	
005	001	ALJH	
006	001	ALJH	
007	001	ALJH	
008	001	ALJH	
009	001	ALJH	
010	001	ALJH	



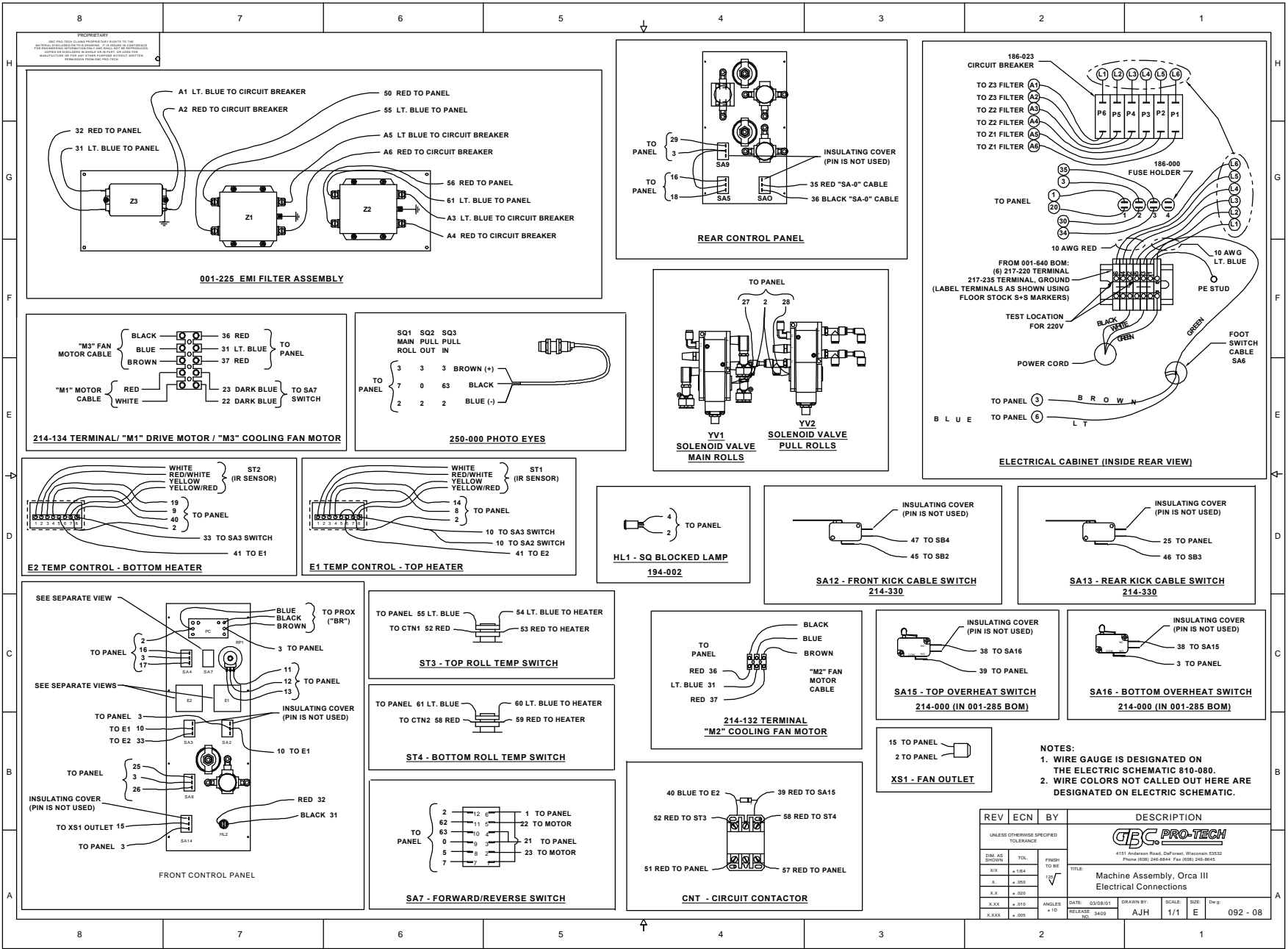


REV	ECN	BY	DESCRIPTION
UNLESS OTHERWISE SPECIFIED TOLERANCES:			 4151 American Road, DuPon, Wisconsin 53532 Phone: (800) 246-8844 Fax: (800) 246-8845
Dim. in Drawing	TOL.	Finish to be	
X.X	+ .002	✓	
X.X	+ .001		
X.XX	+ .010	ANGLES	DATE: 03/02/01 DRAWN BY: SCALE: SIZE: Dwg
X.XXX	+ .005	+10	REVISION: 3409 AJH 1/1 E 092 - 04

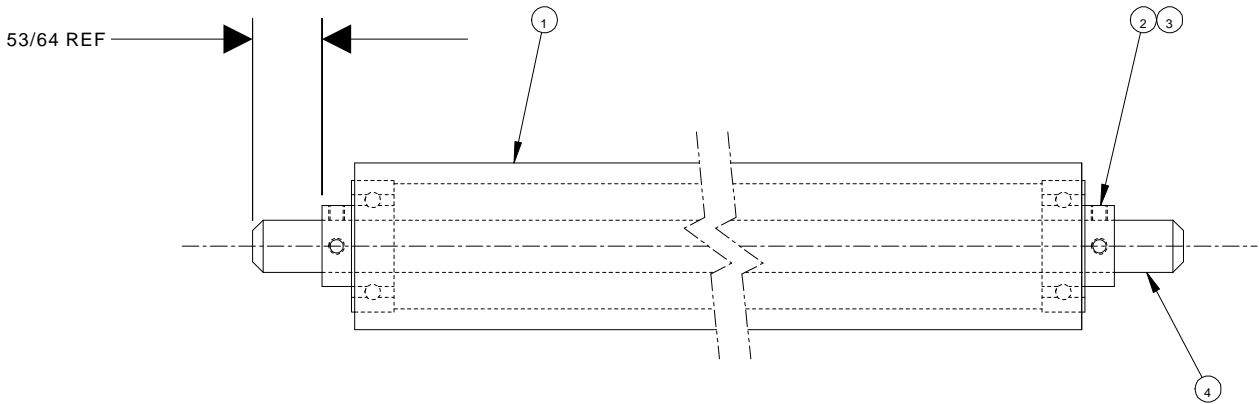




REV	ECN	BY	DESCRIPTION
001	1	WJ	ISSUED FOR PRODUCTION
002	1	WJ	REVISION
003	1	WJ	REVISION
004	1	WJ	REVISION
005	1	WJ	REVISION
006	1	WJ	REVISION
007	1	WJ	REVISION
008	1	WJ	REVISION
009	1	WJ	REVISION
010	1	WJ	REVISION
011	1	WJ	REVISION
012	1	WJ	REVISION
013	1	WJ	REVISION
014	1	WJ	REVISION
015	1	WJ	REVISION
016	1	WJ	REVISION
017	1	WJ	REVISION
018	1	WJ	REVISION
019	1	WJ	REVISION
020	1	WJ	REVISION
021	1	WJ	REVISION
022	1	WJ	REVISION
023	1	WJ	REVISION
024	1	WJ	REVISION
025	1	WJ	REVISION
026	1	WJ	REVISION
027	1	WJ	REVISION
028	1	WJ	REVISION
029	1	WJ	REVISION
030	1	WJ	REVISION
031	1	WJ	REVISION
032	1	WJ	REVISION
033	1	WJ	REVISION
034	1	WJ	REVISION
035	1	WJ	REVISION
036	1	WJ	REVISION
037	1	WJ	REVISION
038	1	WJ	REVISION
039	1	WJ	REVISION
040	1	WJ	REVISION
041	1	WJ	REVISION
042	1	WJ	REVISION
043	1	WJ	REVISION
044	1	WJ	REVISION
045	1	WJ	REVISION
046	1	WJ	REVISION
047	1	WJ	REVISION
048	1	WJ	REVISION
049	1	WJ	REVISION
050	1	WJ	REVISION
051	1	WJ	REVISION
052	1	WJ	REVISION
053	1	WJ	REVISION
054	1	WJ	REVISION
055	1	WJ	REVISION
056	1	WJ	REVISION
057	1	WJ	REVISION
058	1	WJ	REVISION
059	1	WJ	REVISION
060	1	WJ	REVISION
061	1	WJ	REVISION
062	1	WJ	REVISION
063	1	WJ	REVISION
064	1	WJ	REVISION
065	1	WJ	REVISION
066	1	WJ	REVISION
067	1	WJ	REVISION
068	1	WJ	REVISION
069	1	WJ	REVISION
070	1	WJ	REVISION
071	1	WJ	REVISION
072	1	WJ	REVISION
073	1	WJ	REVISION
074	1	WJ	REVISION
075	1	WJ	REVISION
076	1	WJ	REVISION
077	1	WJ	REVISION
078	1	WJ	REVISION
079	1	WJ	REVISION
080	1	WJ	REVISION
081	1	WJ	REVISION
082	1	WJ	REVISION
083	1	WJ	REVISION
084	1	WJ	REVISION
085	1	WJ	REVISION
086	1	WJ	REVISION
087	1	WJ	REVISION
088	1	WJ	REVISION
089	1	WJ	REVISION
090	1	WJ	REVISION
091	1	WJ	REVISION
092	1	WJ	REVISION
093	1	WJ	REVISION
094	1	WJ	REVISION
095	1	WJ	REVISION
096	1	WJ	REVISION
097	1	WJ	REVISION
098	1	WJ	REVISION
099	1	WJ	REVISION
100	1	WJ	REVISION



REQ'D	DESCRIPTION	PART NO.	ITEM
1	IDLER, 2 X 64", CHROME	620-405	1
2	BEARING, IDLER	020-100	2
4	SETSCREW, 10-32 X 3/16" LG	-	3
1	IDLER SHAFT	710-111	4



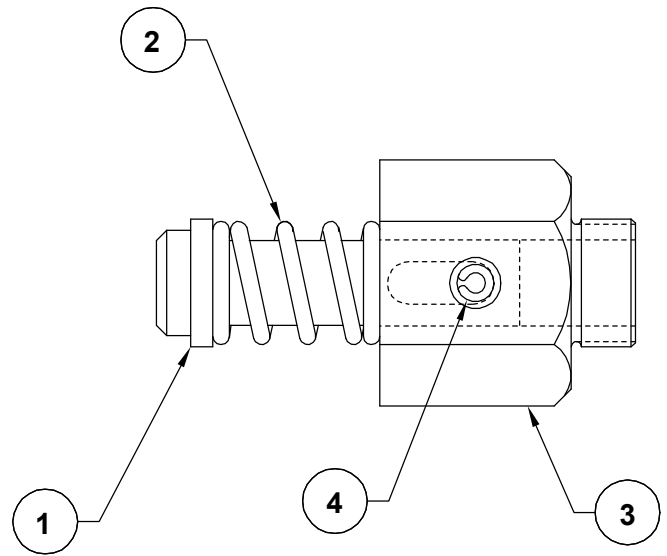
-006 ASSEMBLY

SCALE: 1/1

UNLESS OTHERWISE SPECIFIED TOLERANCE				Pro-Tech Engineering 2117 K Simpson St. Madison, Wisconsin 53704 Phone (608) 246-8844 Fax (608) 246-8855	
DIM AS SHOWN .XX F 1.64 .X F .500 .XX F .000 .XXX F .010 X.XXX F .005	TOL. F 1.64 F .500 F .000 F .010 F .005	FINISH TO BE ✓	TITLE IDLER, PAPER INFEEED ORCA III/ ORCA III T	DATE 1-24-94	DRAWN BY: P.R.
DWG SCALE: C1			DWG 001-006		

PROPRIETARY
 GBC PRO-TECH CLAIMS PROPRIETARY RIGHTS TO THE MATERIAL DISCLOSED ON THIS DRAWING. IT IS ISSUED IN CONFIDENCE FOR ENGINEERING INFORMATION ONLY AND SHALL NOT BE REPRODUCED, COPIED OR DISCLOSED IN WHOLE OR IN PART, OR USED FOR MANUFACTURE OR FOR ANY OTHER PURPOSE WITHOUT WRITTEN PERMISSION FROM GBC PRO-TECH

REQ'D	DESCRIPTION	PART NO.	ITEM
1	PIN, STANDOFF, LOW PROFILE	645-005	1
1	SPRING, COMPRESSION	089-140	2
1	STANDOFF, IDLER, HEX	755-032	3
1	ROLL PIN, 7/32 X 1-1/8	095-135	4



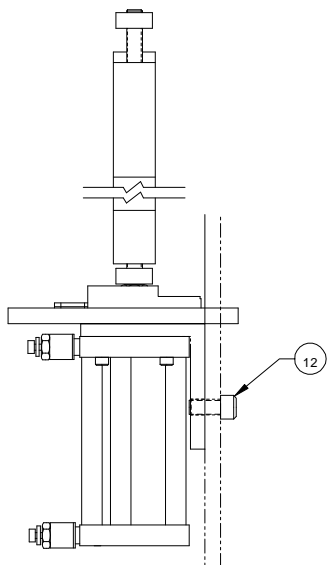
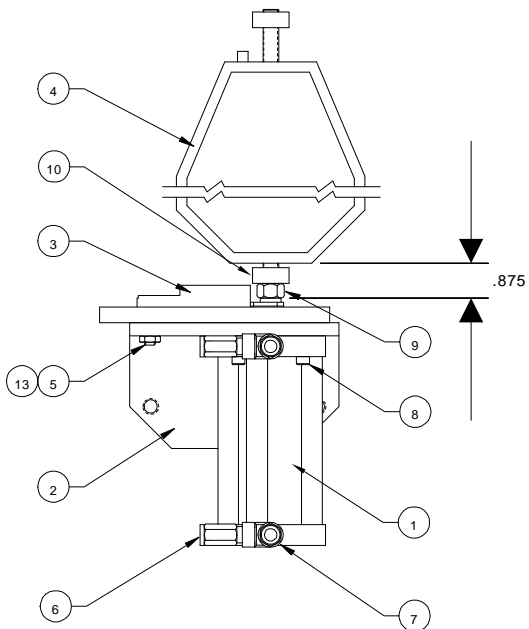
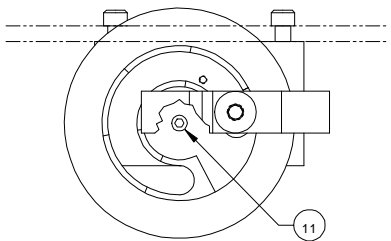
REVISION	SHEET OF		
	DIM. AS SHOWN	TOL.	FINISH TO BE
	X/X	± 1/64	125
	X.	± .050	
	X.X	± .020	
	X.XX	± .010	ANGLES ± 1D
	X.XXX	± .005	

GBC PRO-TECH
 4151 Anderson Road, DeForest, Wisconsin 53532
 Phone (608) 246-8844 Fax (608) 246-8645

TITLE: **ASS'Y, STANDOFF, REMOVABLE IDLER, LOW PROFILE ORCA III/ ORCA III T**

DATE: 06/26/95	DRAWN BY: PR	SCALE: 1/1	SIZE: A	Dwg: 001-054
RELEASE NO.				

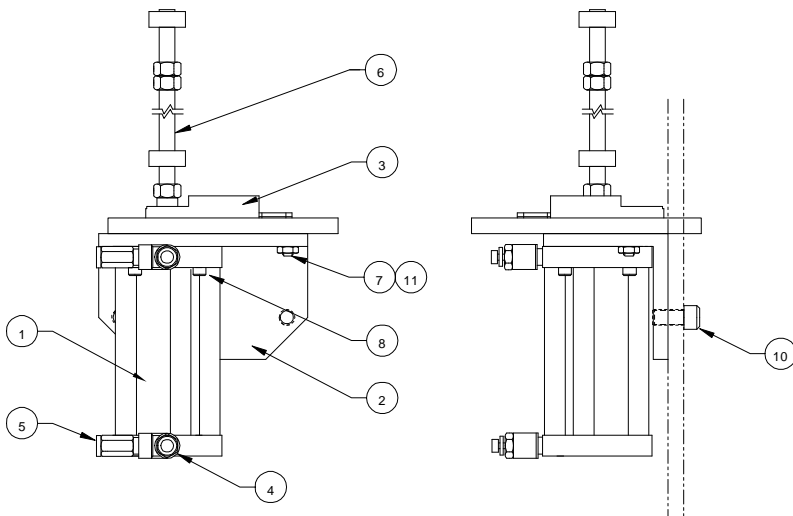
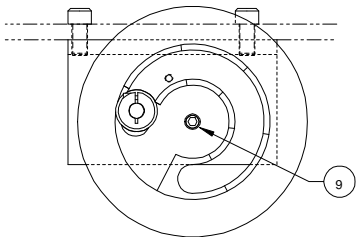
REQ'D	DESCRIPTION	PART NO.	ITEM
1	CYL, PULL ROLL (BIMBA FO-174)	320-300	1
1	BRACKET, CYL MNT, RT	510-082	2
1	SHIM DISK, PULL ROLL, RT	X92-0091	3
1	BRACKET, LIFT, PULL ROLL	X92-0138	4
1	PLUNGER, BALL	098-120	5
2	FITTING, AIR, MALE 1/8 NPT	330-590	6
2	VALVE, AIR CONTROL, 1/8 NPT	330-120	7
4	CAP SCREW, SOCKET, 10-32 X 3/4	-	8
1	NUT, JAM, 3/8-24	-	9
2	LOCK COLLAR, 3/8-24	290-190	10
1	BOLT, SHOULDER, 1/4 X 3/8	-	11
2	CAP SCREW, SOCKET, 3/8-16 X 3/4	-	12
1	JAM NUT, 1/4-20	-	13



-058 ASSEMBLY
SCALE: 1/2

UNLESS OTHERWISE SPECIFIED TOLERANCE		FINISH TO BE		DATE		DRAWN BY		DWG SCALE		DWG NO	
Ø	F 1.64	✓		2-8-94	P.R.	C2	001-058				
X	F .050										
X.X	F .020										
X.XX	F .010										
X.XXX	F .005										

REQ'D	DESCRIPTION	PART NO.	ITEM
1	CYL. PULL ROLL, (BIMBA FO-174)	320-300	1
1	BRACKET, CYL MNT, LF	510-079	2
1	SHIM DISK, PULL ROLL, LF	X92-0092	3
2	VALVE, AIR CONTROL, 1/8 NPT	330-120	4
2	FITTING, AIR, MALE 1/8 NPT	330-590	5
1	ASSEMBLY, SHAFT, CYLINDER, PULL ROLL	001-304	6
1	PLUNGER, BALL	098-120	7
8	CAP SCREW, SOCKET, 10-32 X 3/4		8
1	BOLT, SHOULDER, 1/4 X 3/8		9
2	CAP SCREW, SOCKET, 3/8-16 X 3/4		10
1	JAM NUT, 1/4-20		11



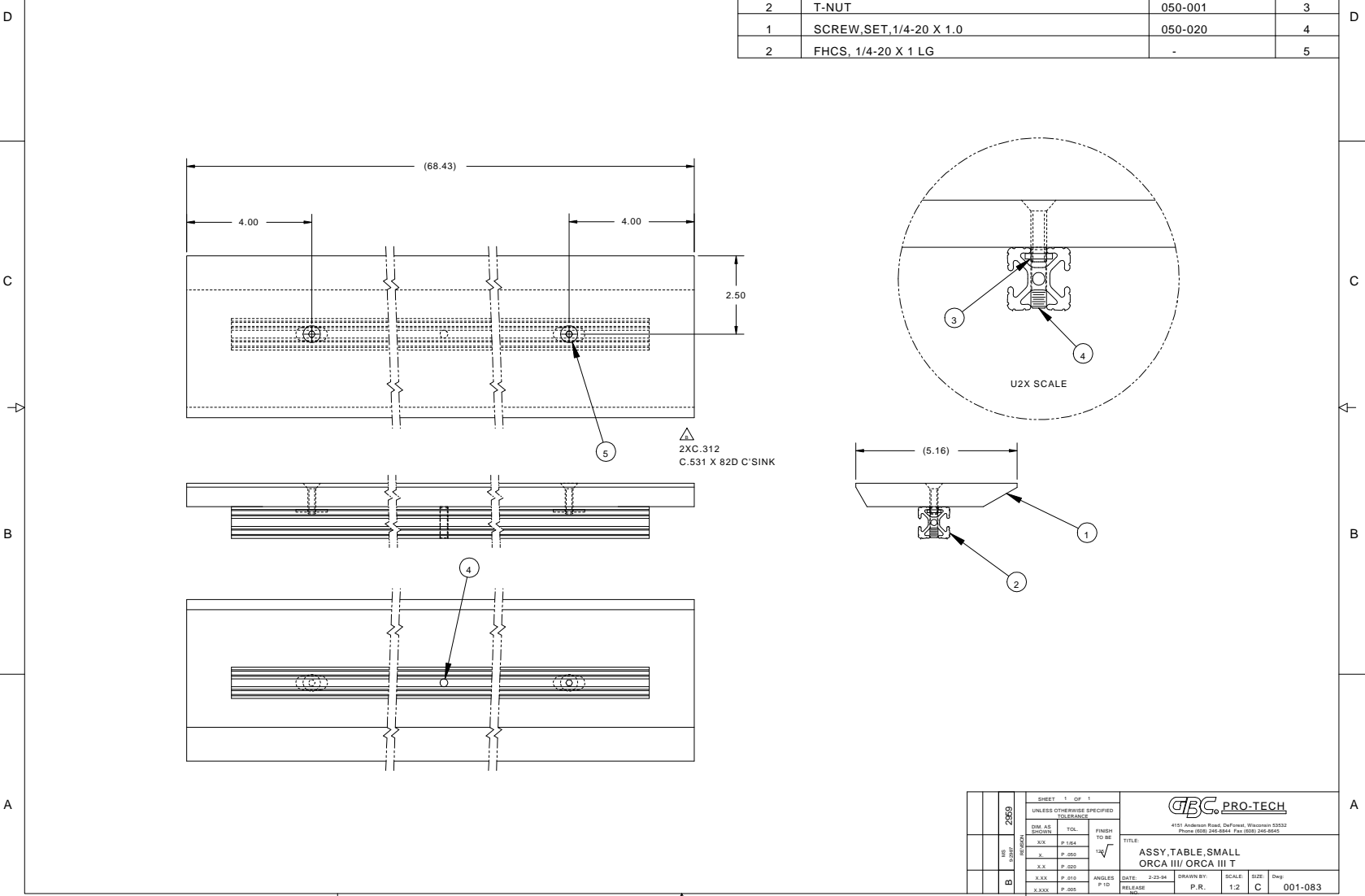
-O59 ASSEMBLY

SCALE-1/2

UNLESS OTHERWISE SPECIFIED				TOLERANCES			
DIM AS SHOWN	TOL.	FINISH	TO BE	TITLE: CYLINDER PULL ROLL, LF			
.XX	F .104	✓	✓	ORCA III / ORCA III			
.X	F .050						
.XX	F .020	ANGLES		DATE	DRAWN BY:	DWG SCALE:	DWG
.XXX	F .010			2-9-94	P.R.	C2	001-059
X.XXX	F .005						

REQ'D	DESCRIPTION	PART NO.	ITEM
1	TABLE, SMALL, GREY	760-048	1
1	EXTRUSION, ALUM	110-110	2
2	T-NUT	050-001	3
1	SCREW, SET, 1/4-20 X 1.0	050-020	4
2	FHCS, 1/4-20 X 1 LG	-	5

PROPRIETARY
 GBC PRO-TECH CLAIMS PROPRIETARY RIGHTS TO THE MATERIAL DISCLOSED ON THIS DRAWING. IT IS ISSUED IN CONFIDENCE FOR ENGINEERING INFORMATION ONLY AND SHALL NOT BE REPRODUCED, COPIED OR DISCLOSED IN WHOLE OR IN PART, OR USED FOR MANUFACTURE OR FOR ANY OTHER PURPOSE WITHOUT WRITTEN PERMISSION FROM GBC PRO-TECH

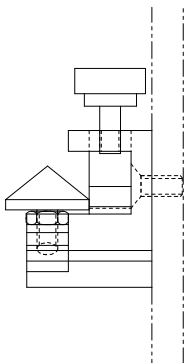
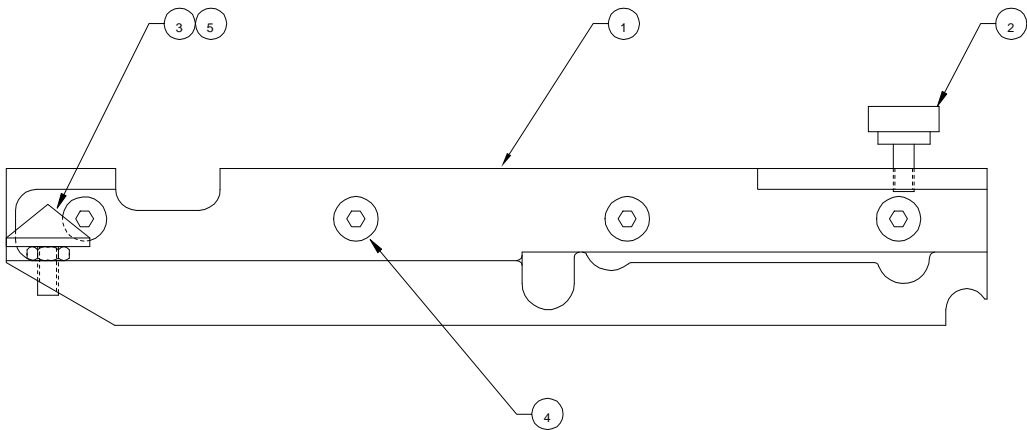
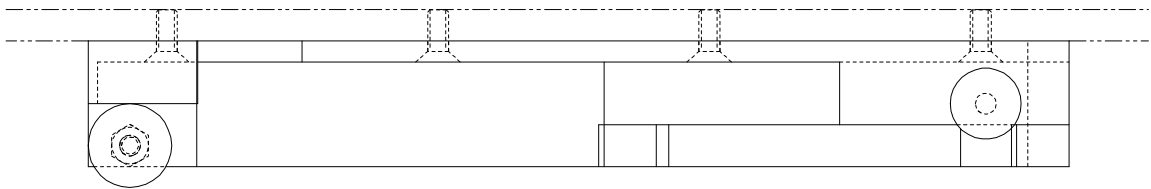


SHEET 1 OF 1		UNLESS OTHERWISE SPECIFIED TOLERANCE		FINISH TO BE	
DIM. AS SHOWN	TOL.	TKL			
R.X	F .004				
R	F .002				
S.X	F .025				
S.XX	F .010				
S.XXX	F .005				
ANGLES P 10		RELEASE		DATE: 2-23-94	
DRAWN BY:		SCALE: 1:2		SIZE: C	
P.R.		001-083		Dwg	

GBC PRO-TECH
 4151 Anderson Road, DeForest, Wisconsin 53532
 Phone (800) 246-8844 Fax (800) 246-8845

TITLE:
 ASSY. TABLE SMALL
 ORCA III/ ORCA III T

REQ'D	DESCRIPTION	PART NO.	ITEM
1	BRACKET, TABLE, FRONT, RT	510-056	1
1	KNOB, LOCK-DOWN, TABLE	465-200	2
1	BUMPER, RUBBER	465-500	3
4	SCREW, ALLEN, FLT HD, 1/4-20 X 1/2	-	4
1	NUT, 1/4-20	-	5

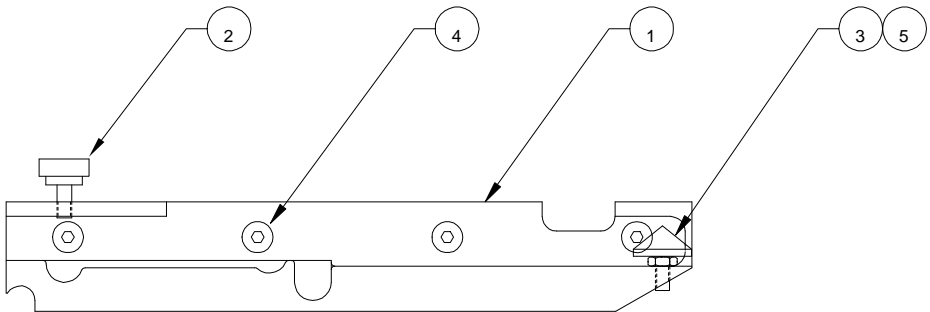
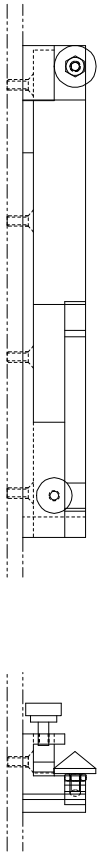


-085 ASSEMBLY

SCALE: 1/1

UNLESS OTHERWISE SPECIFIED TOLERANCE			Pro-Tech Engineering 2117 N. Stoughton Rd., Madison, Wisconsin 53704 Phone (608) 246-8844 Fax (608) 246-6887	
DWG. AS SHOWN	TOL.	FRACTION	TITLE BRACKET, TABLE, FRONT, RT ORCA III / ORCA III T	
XXX	F 1/64	10-94	DATE: 2-23-94 DRAWN BY: P.R. DWG. SCALE: C1 Dwg. 001-085	
X	F .050	✓		
XX	F .020			
XXX	F .010	ANGLES		
XXXX	F .005	F 10		

REQ'D	DESCRIPTION	PART NO.	ITEM
1	BRACKET, TABLE, FRONT, LF	510-055	1
1	KNOB, LOCK-DOWN, TABLE	465-200	2
1	BUMPER, RUBBER	465-500	3
4	SCREW, ALLEN, FLT HD, 1/4-20 X 1/2	-	4
1	NUT, 1/4-20	-	5

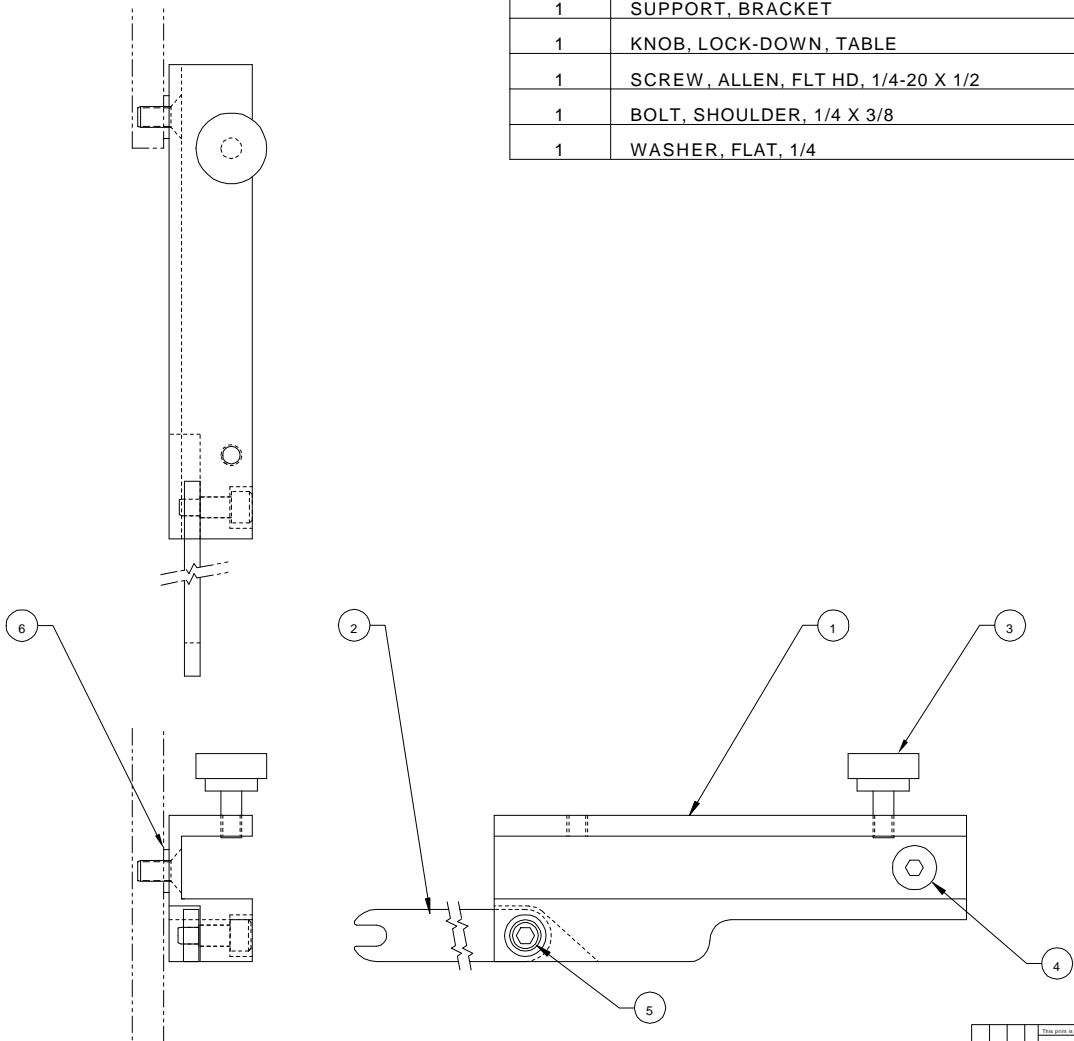


-086 ASSEMBLY

SCALE: 1/2

UNLESS OTHERWISE SPECIFIED TOLERANCE		Pro-Tech Engineering 2117 N. Douglas Rd., Mason, Michigan 48854 Phone (608) 246-8844 Fax (608) 246-8835	
DIM. AS SHOWN .XX P.1.64 .X P.250 .XX P.220	TOL. FRACTION 10/64 ✓	TITLE BRACKET, TABLE, FRONT, LF ORCA III / ORCA III T	
.XXX P.210 .XXX P.205	ANGLES P.10	DATE 2-23-94	DRAWN BY: P.R. DWG SCALE: C2 Chg: 001-086

REQ'D	DESCRIPTION	PART NO.	ITEM
1	BRACKET, TABLE, REAR, RT	510-067	1
1	SUPPORT, BRACKET	510-086	2
1	KNOB, LOCK-DOWN, TABLE	465-200	3
1	SCREW, ALLEN, FLT HD, 1/4-20 X 1/2	-	4
1	BOLT, SHOULDER, 1/4 X 3/8	-	5
1	WASHER, FLAT, 1/4	-	6

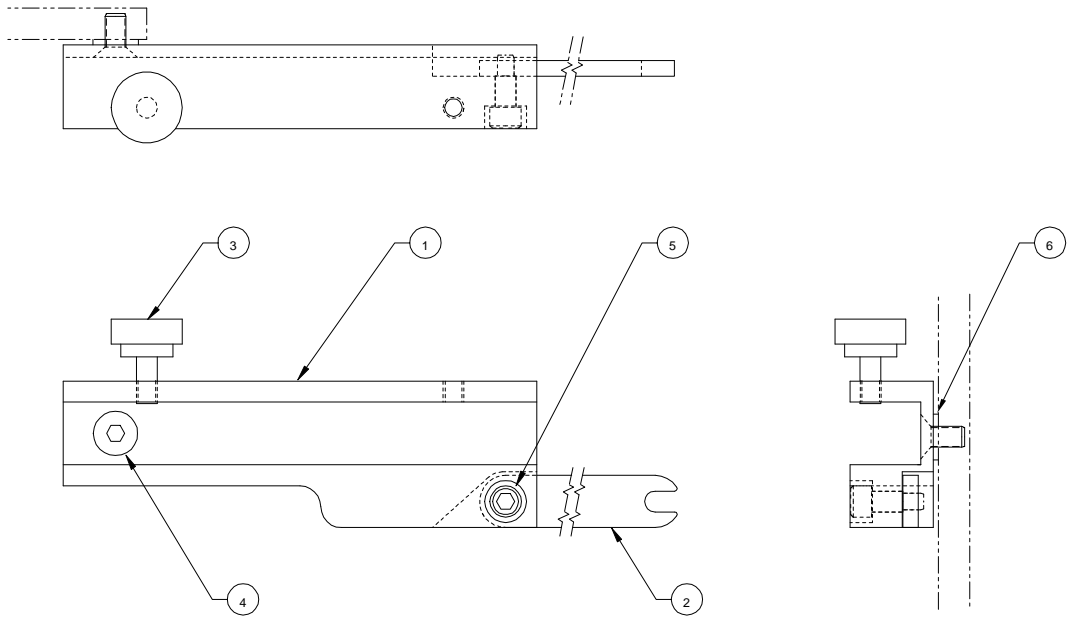


-087 ASSEMBLY

SCALE: 1/1

UNLESS OTHERWISE SPECIFIED				Pro-Tech Engineering			
TOLERANCE				2117 N. Slaughter Rd., Madison, Wisconsin 53704			
DIM AS	TOL.	FINISH	1/16"	Phone (608) 246-8844 Fax (608) 246-4055			
XXX	F .004	12.5		TITLE: BRACKET, TABLE, REAR, RT			
X	F .002		ORCA III / ORCA III T				
X.X	F .002		DATE: 2-24-94	DESIGN BY: P.R.	DWG SCALE: C1	QTY: 001-087	
XXX	F .002		ANGLES: 1/10				

REQ'D	DESCRIPTION	PART NO.	ITEM
1	BRACKET, TABLE, REAR, LF	510-069	1
1	SUPPORT, BRACKET	510-086	2
1	KNOB, LOCK-DOWN, TABLE	465-200	3
1	SCREW, ALLEN, FLT HD, 1/4-20 X 1/2 LG	-	4
1	BOLT, SHOULDER, 1/4 X 3/8	-	5
1	WASHER, FLAT, 1/4	-	6

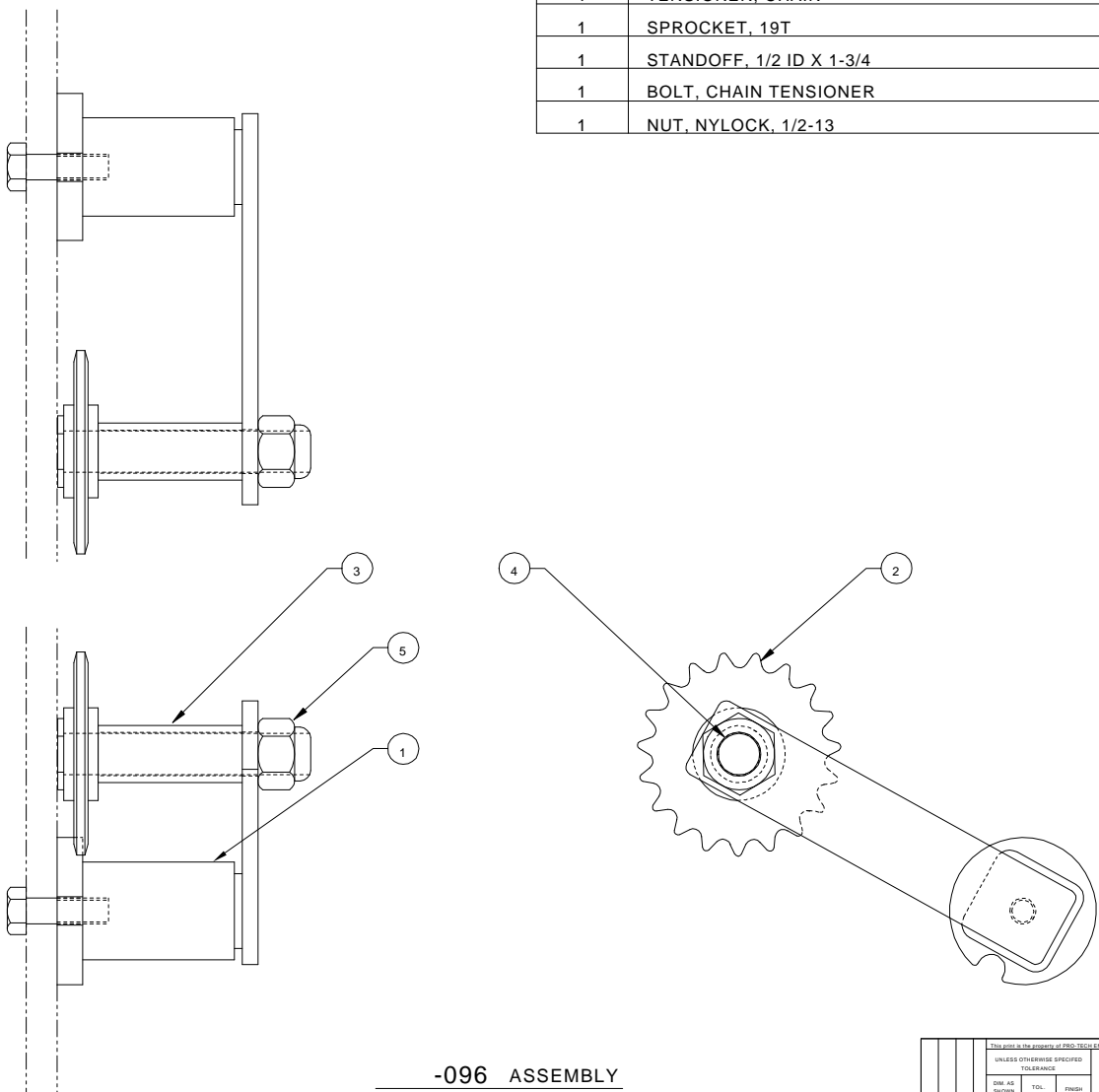


-088 ASSEMBLY

SCALE: 1/1

UNLESS OTHERWISE SPECIFIED TOLERANCE				Pro-Tech Engineering 2117 N. Saugus Rd. Methuen, MA 01844 Phone (978) 246-8844 Fax (978) 246-8855			
DWG AS SHOWN	TOL.	FINISH	TO BE	TITLE BRACKET, TABLE, REAR, LF ORCA III / ORCA III T			
.XX	F .104			DATE 2-24-94			
.X	F .050			DRAWN BY P.R.			
.XX	F .050			DWG SCALE C1			
.XX	F .010	ANGLES	F ID	Dwg 001-088			
.XXX	F .005						

REQ'D	DESCRIPTION	PART NO.	ITEM
1	TENSIONER, CHAIN	440-150	1
1	SPROCKET, 19T	440-130	2
1	STANDOFF, 1/2 ID X 1-3/4	755-000	3
1	BOLT, CHAIN TENSIONER	X93-0047	4
1	NUT, NYLOCK, 1/2-13	-	5

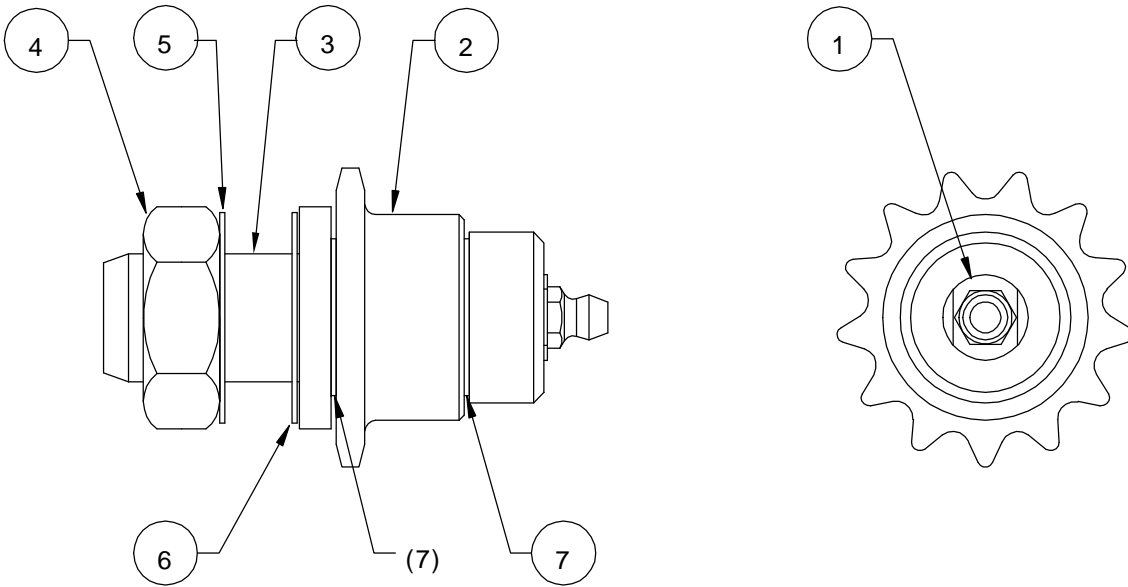


-096 ASSEMBLY

SCALE: 1/1

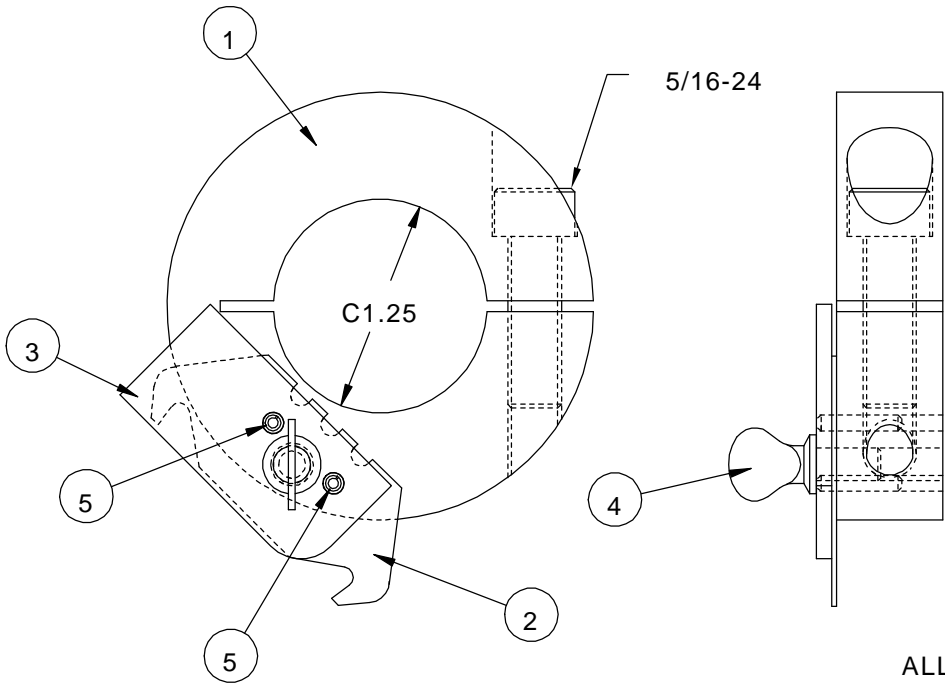
UNLESS OTHERWISE SPECIFIED TOLERANCES				Pro-Tech Engineering 2117 N. Douglas St., Menasha, Wisconsin 54951 Phone (920) 246-8844 Fax (920) 246-8845			
FRONT	TOL.	FRACTION	TO BE	TITLE			
XXX	F 1/64		✓	TENSIONER, CHAIN			
X	F .050			ORCA III / ORCA III T			
XX	F .020			DATE:	DRAWN BY:	DWG SCALE:	DWG NO.
XXX	F .010	ANGLES		3-3-94	P.R.	C1	001-096
XXX	F .005	P. 10					

REQ'D	DESCRIPTION	PART NO.	ITEM
1	SHAFT, IDLER	440-110	1
1	SPROCKET, 13T	440-125	2
1	BOLT, MOD., 3/4-16 X 1	505-002	3
1	NUT, JAM, 3/4-16	-	4
1	WASHER, THRUST	032-291	5
1	WASHER, STAR, INT. TOOTH, 3/4	-	6
2	WASHER, THRUST	032-130	7



This print is the property of PRO-TECH ENGR. The information thereon is remitted in confidence.					
UNLESS OTHERWISE SPECIFIED TOLERANCE			Pro-Tech Engineering 2117 N. Stoughton Rd. Madison, Wisconsin 53704 Phone (608) 246-8844 Fax (608) 246-4685		
DIM. AS SHOWN	TOL.	FINISH TO BE			
X/X	P 1/64	125 $\sqrt{\hspace{1cm}}$			
X.	P .050				
X.X	P .020				
X.XX	P .010	ANGLES P 1D	DATE:	DRAWN BY:	DWG SCALE:
X.XXX	P .005		5-6-93	RAS	A1
			TITLE: ASSEMBLY, SPROCKET, IDLER, ADJUSTABLE ORCA III / ORCA III T		
			Dwg: 001-102		

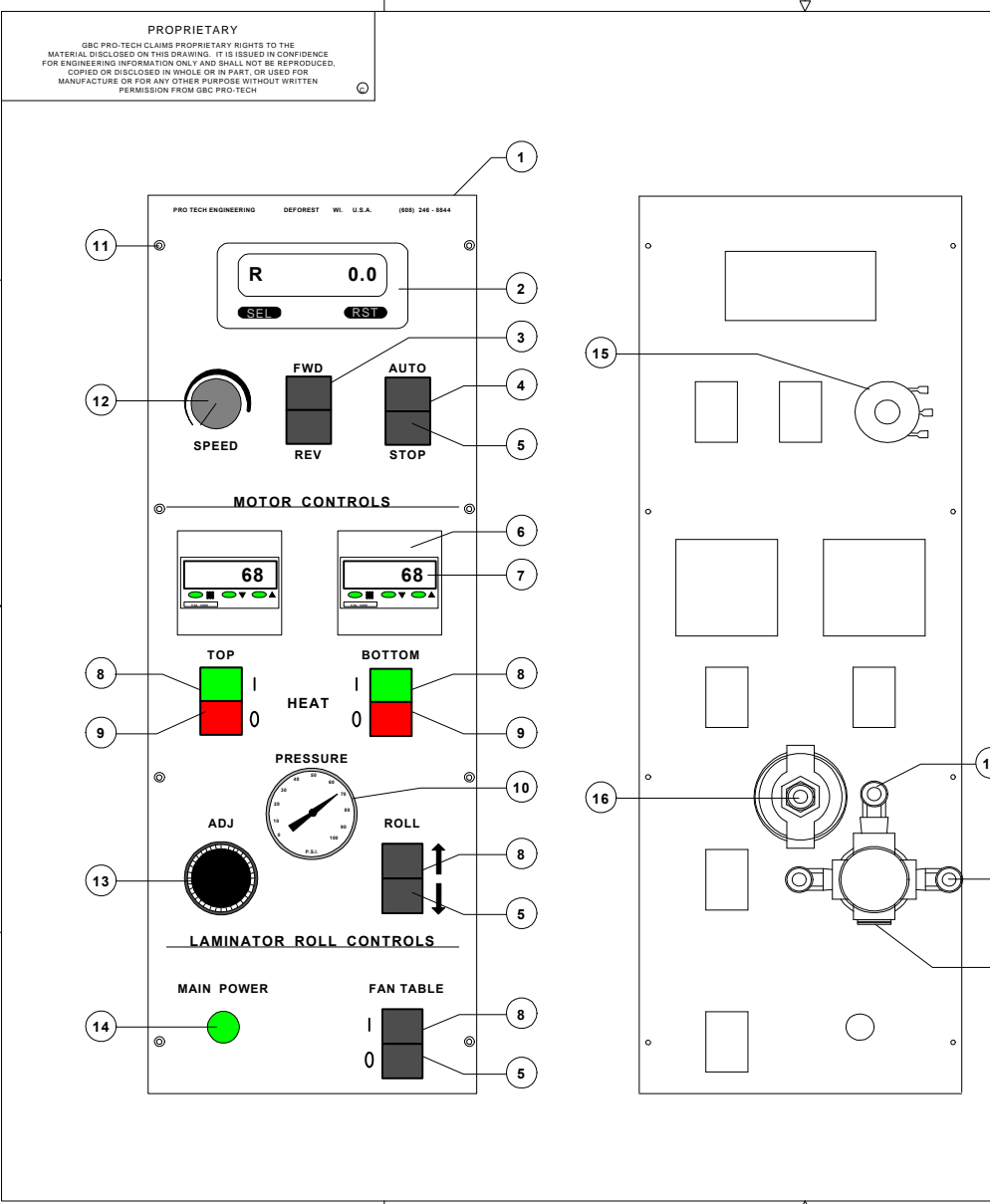
REQ'D	DESCRIPTION	PART NO.	ITEM
1	LOCK COLLAR, CLAMP, MODIFIED	640-000	1
1	BLADE, HOOK	475-300	2
1	PLATE, BLADE, SLITTER	740-004	3
1	THUMBSCREW, 10-32x3/8 /90179A827(McM)	092-110	4
2	PIN, ROLL, 3/32x.5 /98296A143(McMASTER)	095-110	5



ALL DIMS REFERENCE

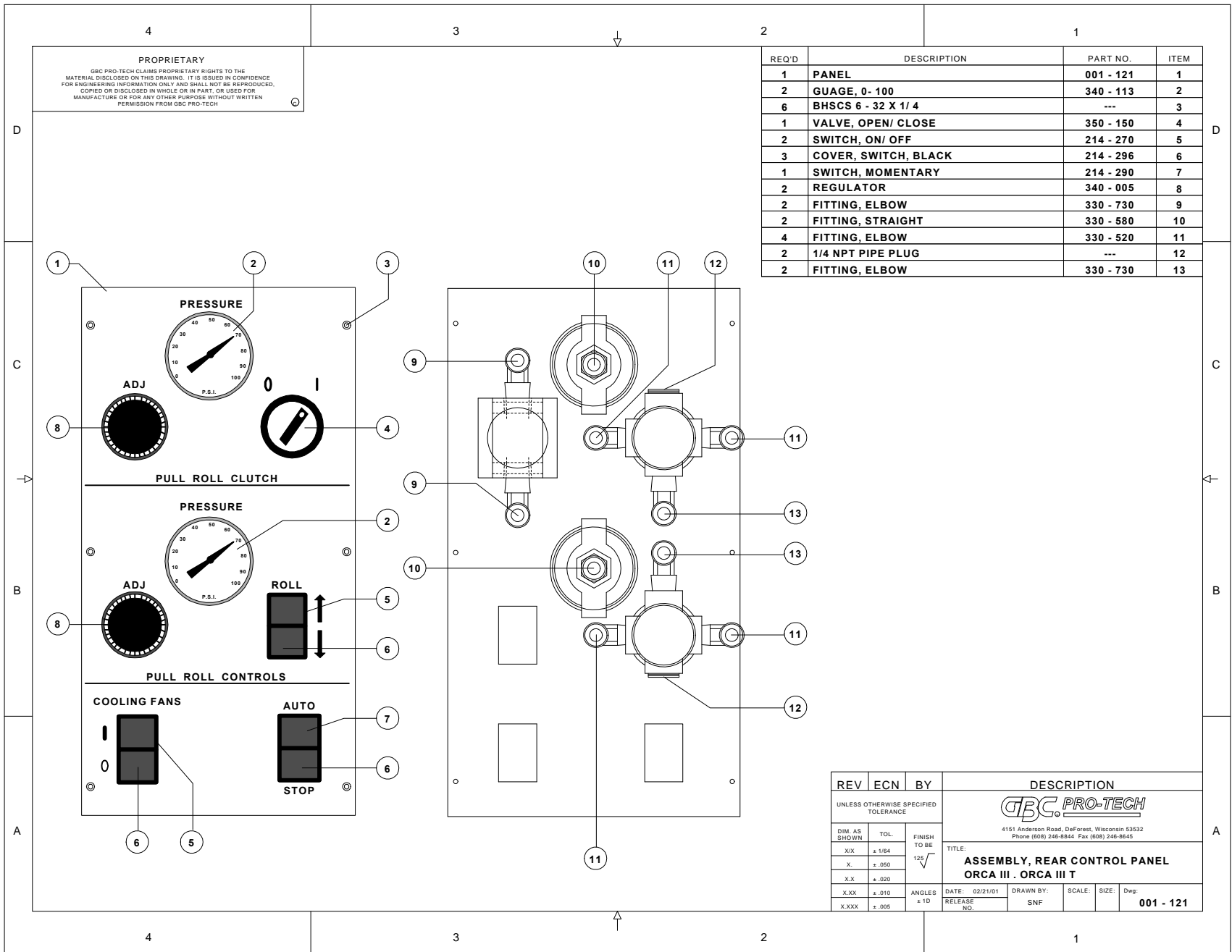
This print is the property of PRO-TECH ENGR. The information thereon is remitted in confidence.			
UNLESS OTHERWISE SPECIFIED TOLERANCE			Pro-Tech Engineering 2117 N. Stoughton Rd. Madison, Wisconsin 53704 Phone (608) 246-8844 Fax (608) 246-8645
DIM. AS SHOWN	TOL.	FINISH TO BE	
X/X	P 1/64	$\sqrt{125}$	
X.	P .050		
X.X	P .020		
X.XX	P .010	ANGLES P 1D	TITLE: ASSY, SLITTER, HOOK BLADE ORCA III / ORCA III T
X.XXX	P .005	DATE: 3-16-94 DRAWN BY: GTS DWG SCALE: A1 Dwg: 001-109	

REQ'D	DESCRIPTION	PART NO.	ITEM
1	PANEL	001 - 117	1
1	RATE/ TOTALIZER	219 - 000	2
1	SWITCH (TAPED PER 001 - 640)	214 - 280	3
1	SWITCH, MOMENTARY	214 - 290	4
4	COVER, SWITCH, BLACK	214 - 296	5
2	ADAPTOR, TEMPERATURE CONTROLLER	230 - 008	6
2	TEMPERATURE CONTROLLER	230 - 007	7
4	SWITCH, ON/ OFF	214 - 270	8
2	COVER, SWITCH, RED/ GREEN	214 - 295	9
1	GAUGE, 0- 100	340 - 113	10
8	BHSCS 6 - 32 X 1/ 4	---	11
1	KNOB, MOTOR CONTROL	465 - 300	12
1	REGULATOR	340 - 005	13
1	INDICATOR LIGHT, GREEN	194 - 000	14
1	POTENTIOMETER	220 - 161	15
1	FITTING, STRAIGHT	330 - 580	16
1	FITTING, ELBOW	330 - 730	17
2	FITTING, ELBOW	330 - 520	18
1	1/4 NPT PIPE PLUG	---	19
1	FITTING, UNION "Y"	330 - 305	20

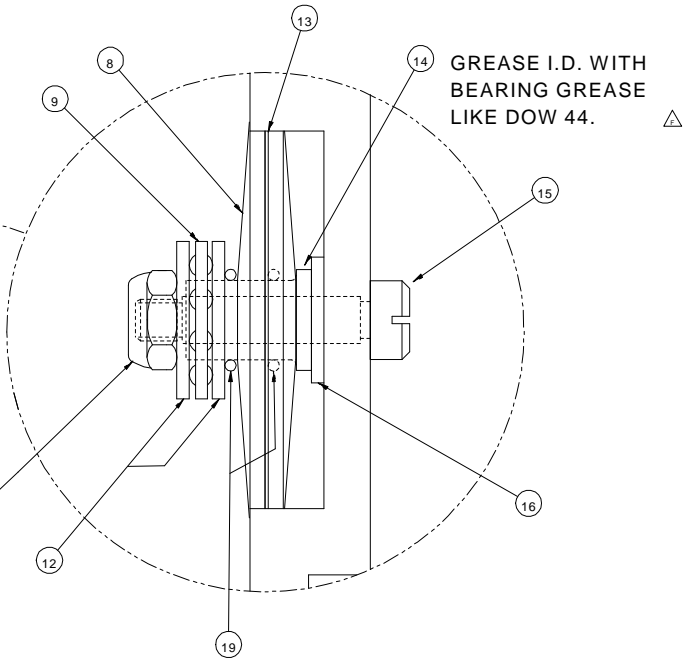
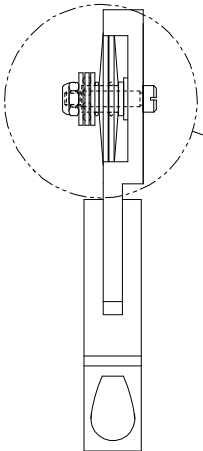
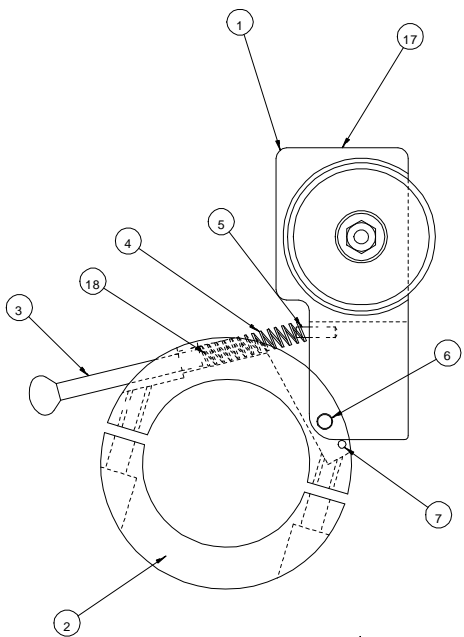


4 PROPRIETARY
 GBC PRO-TECH CLAIMS PROPRIETARY RIGHTS TO THE MATERIAL DISCLOSED ON THIS DRAWING. IT IS ISSUED IN CONFIDENCE FOR ENGINEERING INFORMATION ONLY AND SHALL NOT BE REPRODUCED, COPIED OR DISCLOSED IN WHOLE OR IN PART, OR USED FOR MANUFACTURE OR FOR ANY OTHER PURPOSE WITHOUT WRITTEN PERMISSION FROM GBC PRO-TECH

REV	ECN	BY	DESCRIPTION
UNLESS OTHERWISE SPECIFIED TOLERANCE			GBC PRO-TECH 4151 Anderson Road, DeForest, Wisconsin 53532 Phone (608) 246-8844 Fax (608) 246-8645
DIM. AS SHOWN	TOL.	FINISH TO BE	
X.X	± 1/64	12 \sqrt	TITLE: ASSEMBLY, FRONT CONTROL PANEL ORCA III / ORCA III T DATE: 02/21/01 DRAWN BY: SNF SCALE: SIZE: Dwg: 001 - 117 RELEASE NO.
X	± .050		
X.X	± .020		
X.XX	± .010	ANGLES ± 1D	
X.XXX	± .005		



REQ'D	DESCRIPTION	PART NO.	ITEM
1	ARM, SLITTER	740-006	1
1	COLLAR, INFEED SLITTER	740-052	2
1	SCREW, THUMB	505-010	3
1	SPRING, TENSION	089-150	4
1	ROLL PIN, 1/8 X 1/2 LG	095-100	5
1	DOWEL PIN, 3/16 X 1/2 LG	095-140	6
1	ROLL PIN, 3/32 X 5/8 LG	095-120	7
2	WASHER, CONCAVE	740-007	8
1	BEARING, THRUST, 5/16 X 5/8	032-003	9
△	-	-	10
1	NUT, NYLOCK, 8-32	-	11
2	WASHER, THRUST, 5/16 X 5/8	032-004	12
1	BLADE, SLITTER, CIRCULAR	475-001	13
△	1 FLANGED BUSHING, STEEL	040-037	14
△	1 STRIP, 3/16 X 3/4	050-032	15
1	WASHER, THRUST, 3/16 X 1/2	032-005	16
1	LABEL, WARNING	450-012	17
1	RIVET, FLTHEAD, 1/8 X 1/4 X 1/4 LG	-	18
2	O-RING	480-030	19
△	2 SHCS,STAINLESS STEEL 5/16-24 X 3/4	-	20



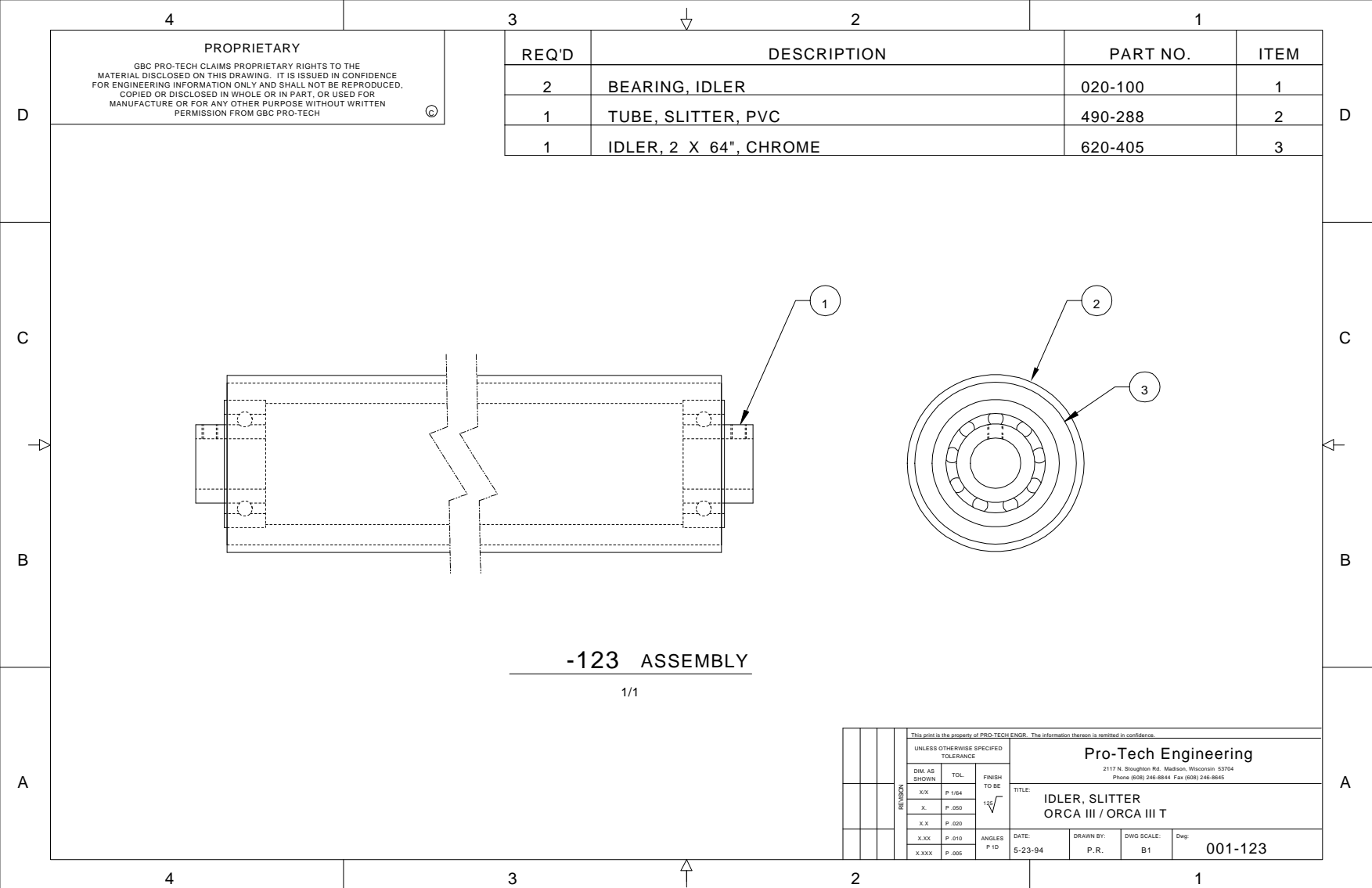
GREASE I.D. WITH BEARING GREASE LIKE DOW 44. △

△ NOTE: REPLACE SUPPLIED BOLTS WITH ITEM 20

△ TIGHTEN -11- ONTO -15- UNTIL ALL OF -9- IS PILOTED ON -14-. THE -13- AND -14- MUST ROTATE FREELY TOGETHER ON -15-.

△ BLUE LOCTITE -11- TO -15-.

UNLESS OTHERWISE SPECIFIED TOLERANCE:		FINISH		TITLE	
Ø	F.104	TO BE	SLITTER, INPUT / OUTPUT ORCA III / ORCA III T		
Ø	F.104	TO BE	DATE: 05-16-94		
Ø	F.104	TO BE	DRAWN BY: P.R.		
Ø	F.104	TO BE	DWG SCALE: C1		
Ø	F.104	TO BE	DWG: 001-122		



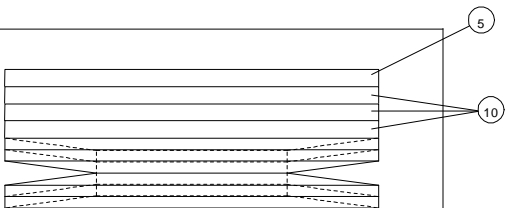
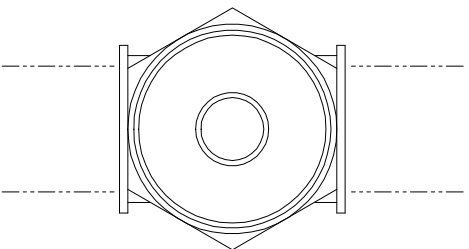
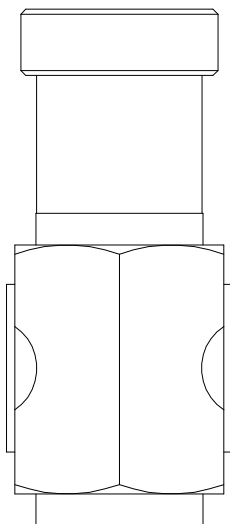
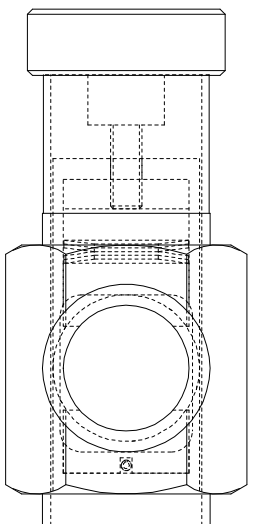
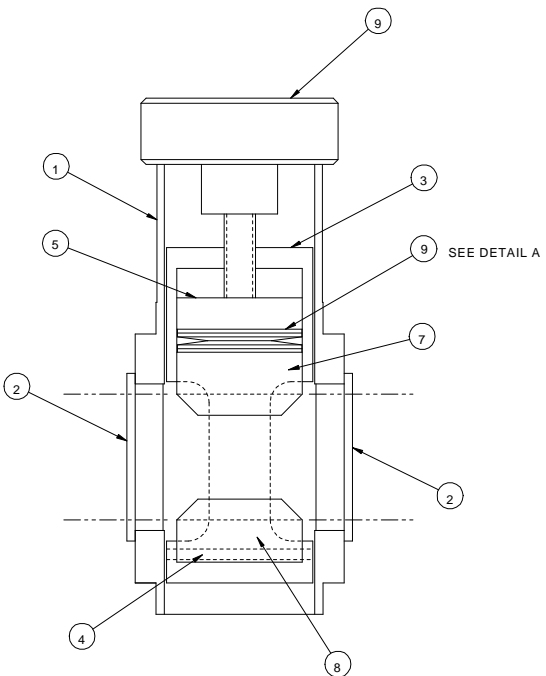
REQ'D	DESCRIPTION	PART NO.	ITEM
2	BEARING, IDLER	020-100	1
1	TUBE, SLITTER, PVC	490-288	2
1	IDLER, 2 X 64", CHROME	620-405	3

PROPRIETARY
 GBC PRO-TECH CLAIMS PROPRIETARY RIGHTS TO THE MATERIAL DISCLOSED ON THIS DRAWING. IT IS ISSUED IN CONFIDENCE FOR ENGINEERING INFORMATION ONLY AND SHALL NOT BE REPRODUCED, COPIED OR DISCLOSED IN WHOLE OR IN PART, OR USED FOR MANUFACTURE OR FOR ANY OTHER PURPOSE WITHOUT WRITTEN PERMISSION FROM GBC PRO-TECH

-123 ASSEMBLY
 1/1

UNLESS OTHERWISE SPECIFIED TOLERANCE				Pro-Tech Engineering 2117 N. Stoughton Rd. Madison, Wisconsin 53704 Phone (608) 246-8844 Fax (608) 246-8846			
DIM. AS SHOWN	TOL.	FINISH TO BE	TITLE:	DATE:	DRAWN BY:	DWG SCALE:	Dwg:
.XX	P .164	120°	IDLER, SLITTER ORCA III / ORCA III T	5-23-94	P.R.	B1	001-123
X	P .050						
X.X	P .020						
X.XX	P .010	ANGLES P 1D					
X.XXX	P .005						

REQ'D	DESCRIPTION	PART NO.	ITEM
1	PIN, PIVOT, UNWIND	625 - 008	1
2	BUSHING, FLANGE, NYLON	500 - 006	2
1	HOUSING, BRAKE	625 - 022	3
1	ROLL PIN, 1/8 X 1-3/4	095 - 105	4
1	PISTON, BRAKE	625 - 028	5
4	SPRING, DISC, 3/4 X 1-1/2	089 - 009	6
1	PAD, BRAKE, TOP	625 - 027	7
1	PAD, BRAKE, BOTTOM	625 - 027	8
1	KNOB, ADJUSTMENT, BRAKE	465 - 020	9
1	WASHER, 9/ 16"	---	10



UDETAIL A
DISC SPRING ORIENTATION

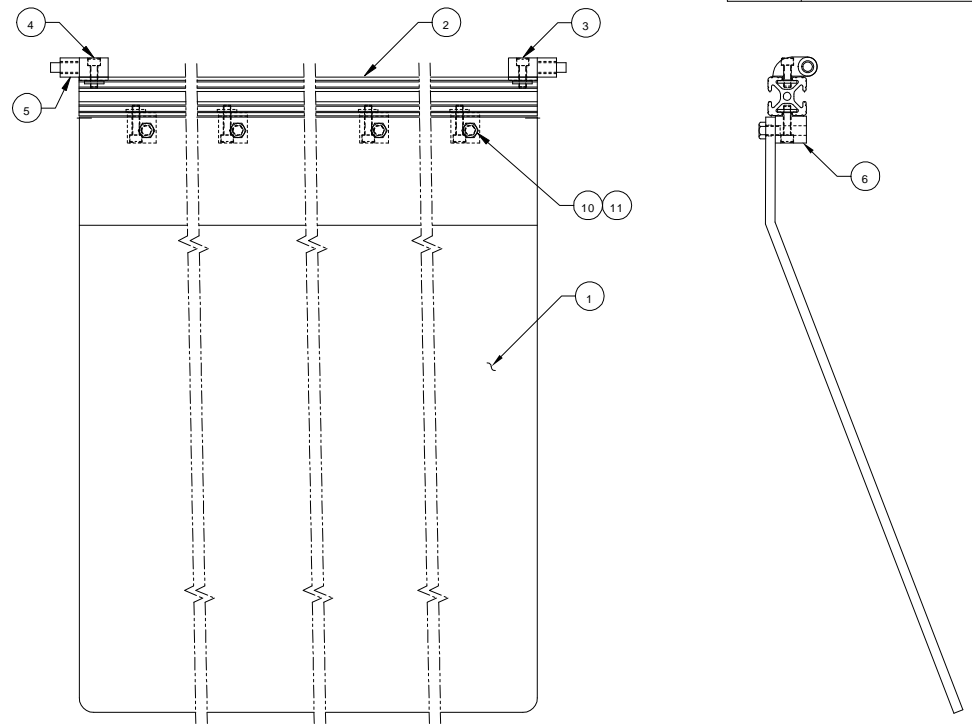
3X SCALE

QTS	2536	SHEET 1 OF 1		UNLESS OTHERWISE SPECIFIED TOLERANCE		 4151 Anderson Road, Deforest, Wisconsin 53532 Phone (608) 246-8644 Fax (608) 246-8645	
REV	2507	QTY	XXX	TOL	P 1.64	FINISH	TITLE ASSEMBLY, BRAKE ORCA III / ORCA III T
DATE	11-15-94	REV	X	P	050	1/2	
BY	1166	DATE	X.X	P	020	ANGLE	DATE: 11-15-94
CHKD	1161	BY	X.XX	P	010	P 10	RELEASE
DATE	0937	DATE	X.XXX	P	005		BY: RAS
						SCALE: 1/1	
						SIZE: C	
						Dep: 001-158	

REQ'D	DESCRIPTION	PART NO.	ITEM
1	SHIELD, MAIN ROLL	585-006	1
1	ALUMINUM EXTRUSION, 1010 X 68"	110-013	2
1	HINGE, LIFTOFF, #2073, RH	100-012	3
1	HINGE, LIFTOFF, #2074, LH	100-013	4
2	SPACER, ROUND PLASTIC, 1/2 X 1/2	040-006	5
4	MOUNT, PANEL, #2427	100-014	6
4	SCREW, NYLON, HEX HEAD, 1/4-20 X 3/4	-	10

PROPRIETARY
 GBC PRO-TECH CLAIMS PROPRIETARY RIGHTS TO THE MATERIAL DISCLOSED ON THIS DRAWING. IT IS ISSUED IN CONFIDENCE FOR ENGINEERING INFORMATION ONLY AND SHALL NOT BE REPRODUCED, COPIED OR DISCLOSED IN WHOLE OR IN PART, OR USED FOR MANUFACTURE OR FOR ANY OTHER PURPOSE WITHOUT WRITTEN PERMISSION FROM GBC PRO-TECH

NOTES:
 1. INTERPRET DRAWING PER ANSI Y14.5M-1982
 ▲



-164 ASSEMBLY
 SCALE: 1/2

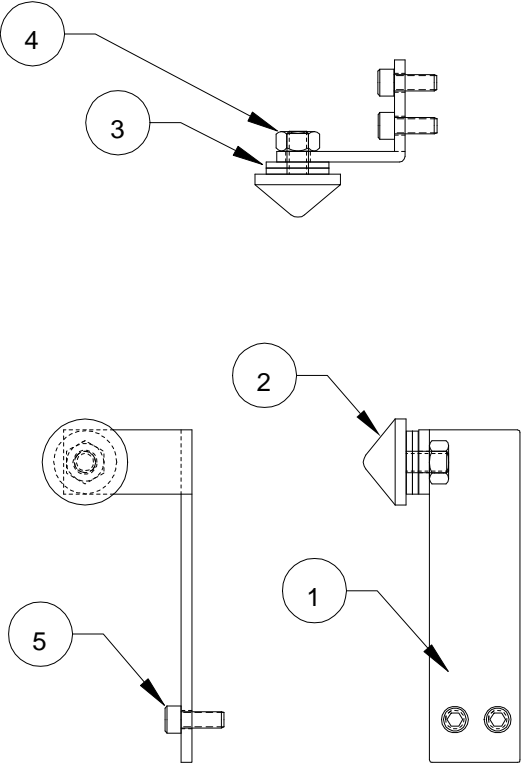
REV	DATE	BY	CHKD	APP'D
C				
B				
A				

2743	2712	2624
REV	DATE	BY
C		
B		
A		

SHEET 1 OF 1		
UNLESS OTHERWISE SPECIFIED TOLERANCES		
SIM. AS SHOWN	TOL.	FINISH TO BE
X.X	P .004	12.5
X	P .005	
X.X	P .020	
X.XX	P .010	
X.XXX	P .005	

		4151 Anderson Road, Deforest, Wisconsin 53532 Phone (800) 246-8844 Fax (800) 246-8845	
TITLE: ASSY, SHIELD, MAIN ROLL ORCA III / ORCA III T			
DATE: 08-17-04	DRAWN BY: P.R.	SCALE: 1/1	SIZE: C
RELEASE			Dwg: 001-164

REQ'D	DESCRIPTION	PART NO.	ITEM
1	BRKT, SHIELD, STOP, RIGHT	510 - 096	1
1	BUMPER, RUBBER, CONICAL	465-500	2
3	WASHER, FLAT, 1/4"	-	3
1	NUT, 1/4-20	-	4
2	SCREW, CAP, 10-32 X 1/2 LG	-	5

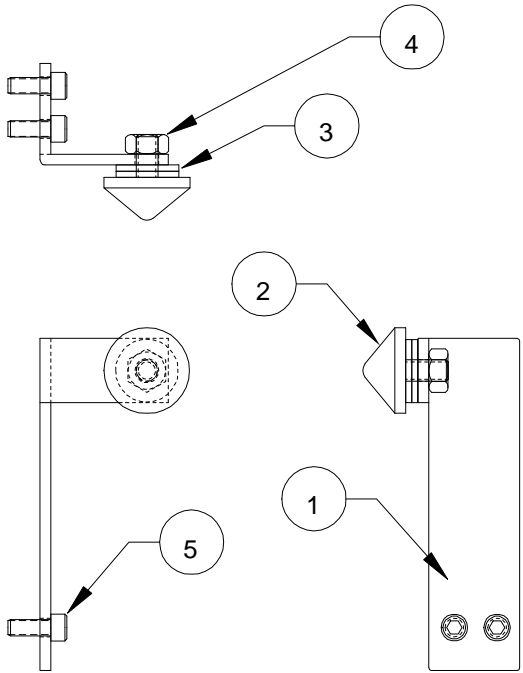


- 165 ASSEMBLY

SCALE: 1/2

This print is the property of PRO-TECH ENGR. The information thereon is remitted in confidence.									
UNLESS OTHERWISE SPECIFIED TOLERANCE					Pro-Tech Engineering 2117 N. Stoughton Rd. Madison, Wisconsin 53704 Phone (608) 246-8844 Fax (608) 246-8645				
DIM. AS SHOWN	TOL.	FINISH TO BE							
X/X	P 1/64	12 $\sqrt{\text{R}}$							
X.	P .050								
X.X	P .020								
X.XX	P .010	ANGLES	DATE:	DRAWN BY:	DWG SCALE:	Dwg: 001-165			
X.XXX	P .005	P 1D	8-17-94	P.R.	A2				

REQ'D	DESCRIPTION	PART NO.	ITEM
1	BRKT, STOP, SHIELD, LF	510-097	1
1	BUMPER, RUBBER, CONICAL	465-500	2
3	WASHER, FLAT, 1/4"	-	3
1	NUT, 1/4-20	-	4
2	SCREW, CAP, 10-32 X 1/2 LG	-	5

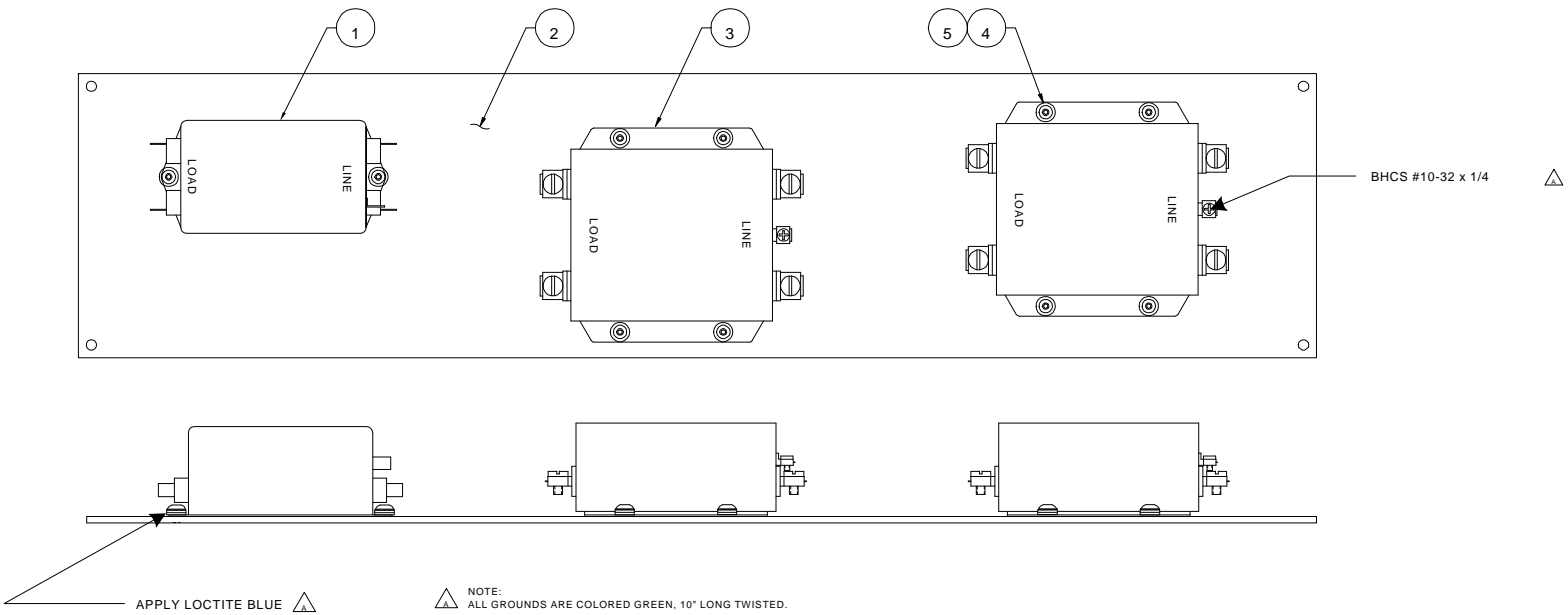


-166 ASSEMBLY

SCALE: 1/2

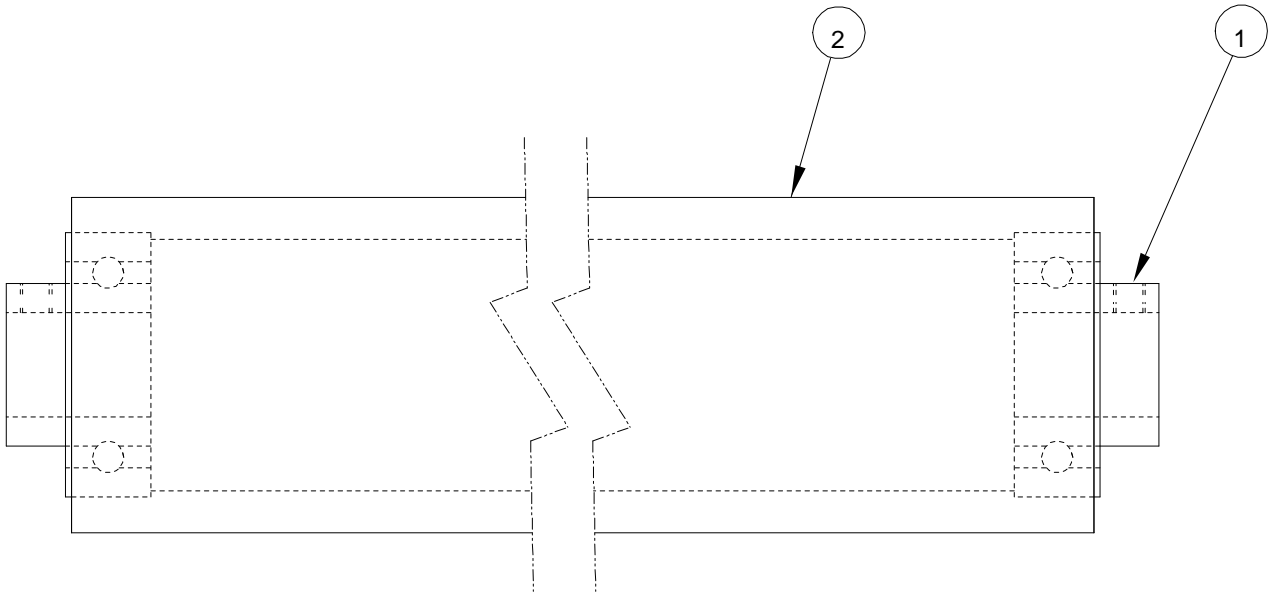
This print is the property of PRO-TECH ENGR. The information thereon is remitted in confidence.					
UNLESS OTHERWISE SPECIFIED TOLERANCE			Pro-Tech Engineering 2117 N. Stoughton Rd. Madison, Wisconsin 53704 Phone (608) 246-8844 Fax (608) 246-8645		
DIM. AS SHOWN	TOL.	FINISH TO BE			
X/X	P 1/64	125√	TITLE: ASS'Y, BRACKET, STOP, SHIELD LEFT - ORCA III / ORCA III T		
X.	P .050				
X.X	P .020	ANGLES P 1D	DATE:	DRAWN BY:	DWG SCALE:
X.XX	P .010		8-17-94	P.R.	A2
X.XXX	P .005		Dwg:		001-166

REQ'D	DESCRIPTION	PART NO.	ITEM
1	FILTER, MOTOR BOARD	185-003	1
1	PLATE, FILTER MOUNT	672-013	2
2	FILTER, AC LINE	185-002	3
10	BHCS, 6-32 X 1/4	-	4
10	WASHER, FLAT, #6	-	5



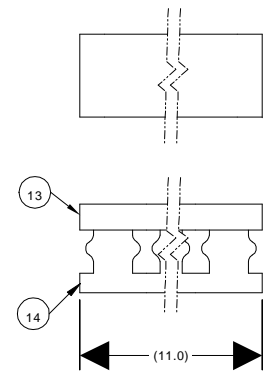
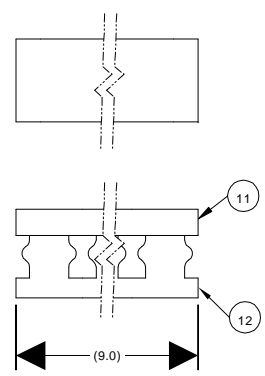
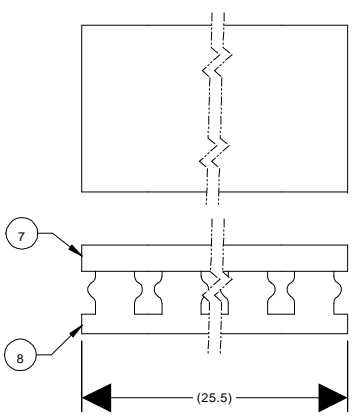
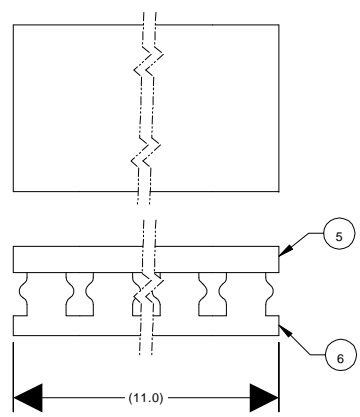
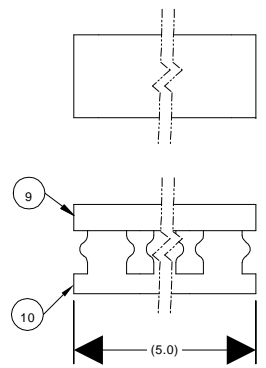
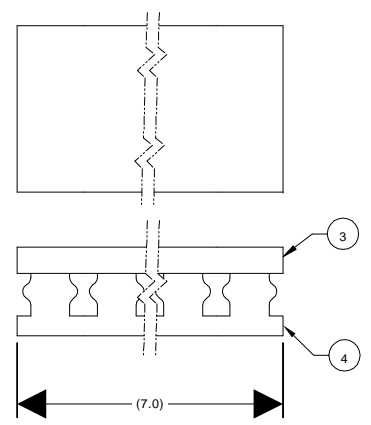
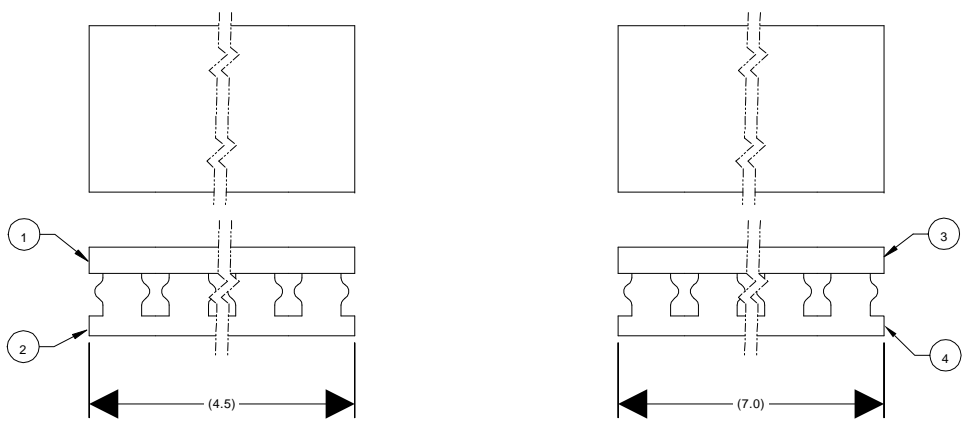
UNLESS OTHERWISE SPECIFIED		Pro-Tech Engineering	
TOLERANCE		217 E. Douglas St., Melrose, Mass 02176 Phone (617) 216-8844 Fax (617) 216-8545	
SIZE AS SHOWN	TOL.	FINISH TO BE	TITLE
XX	F.154	✓	ASSEMBLY, NOISE FILTER
X	F.250		ORCA III / ORCA III T
XX	F.250		
XXX	F.250	ANGLES	DATE: 12-30-94
XXXX	F.250	F.10	DRAWN BY: P.R. DWG SCALE: CZ Dwg 001-225

REQ'D	DESCRIPTION	PART NO.	ITEM
2	BEARING, IDLER	020-100	1
1	IDLER, 2 X 64", CHROME	620-405	2



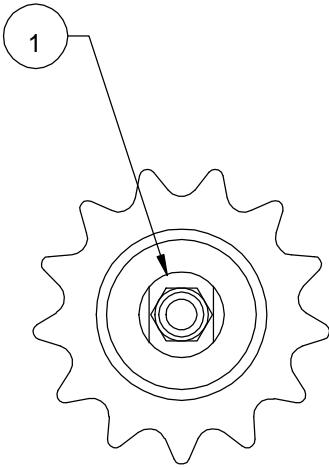
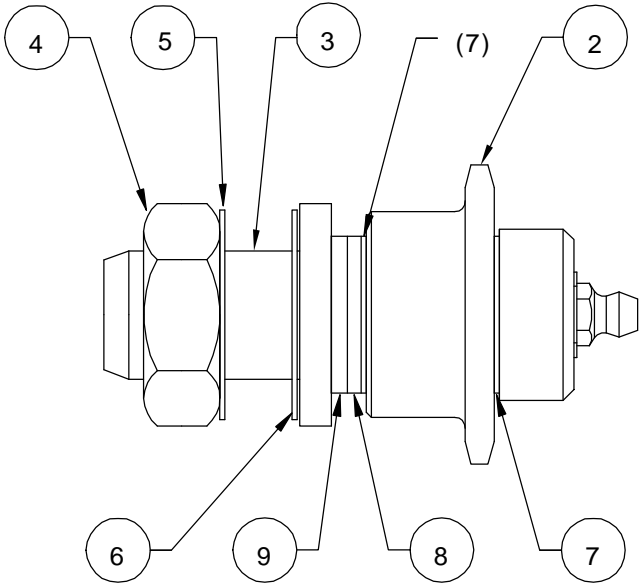
This print is the property of PRO-TECH ENGR. The information thereon is remitted in confidence.							
UNLESS OTHERWISE SPECIFIED TOLERANCE			Pro-Tech Engineering				
			<small>2117 N. Sloughon Rd. Madison, Wisconsin 53704 Phone (608) 246-8844 Fax (608) 246-8645</small>				
DIM. AS SHOWN			TOL.	FINISH TO BE 125 $\sqrt{\hspace{1cm}}$	TITLE:		
X/X			P 1/64		ASSY, IDLER ORCA III / ORCA III T		
X.			P .050				
X.X			P .020				
X.XX			P .010		ANGLES	DATE:	DRAWN BY:
X.XXX			P .005	P 1D	1-10-95	K.L.	A1
REVISION							Dwg: 001-226

REQ'D	DESCRIPTION	PART NO.	ITEM
1	DUCT COVER, 2", 4 - 1/2" LG	180-120	1
1	DUCT BASE, 2", 4-1/2" LG WITH ADHESIVE	180-100	2
1	DUCT COVER, 2", 7" LG	180-120	3
1	DUCT BASE, 2", 7" LG WITH ADHESIVE	180-100	4
1	DUCT COVER, 2", 11" LG	180-120	5
1	DUCT BASE, 2", 11" LG WITH ADHESIVE	180-100	6
1	DUCT COVER, 2", 25-1/2" LG	180-120	7
1	DUCT BASE, 2", 25-1/2" LG WITH ADHESIVE	180-100	8
2	DUCT COVER, 1", 5" LG	180-130	9
2	DUCT BASE, 1", 5" LG WITH ADHESIVE	180-110	10
1	DUCT COVER, 1", 9" LG	180-130	11
1	DUCT BASE, 1" 9" LG WITH ADHESIVE	180-110	12
1	DUCT COVER, 1", 11" LG	180-130	13
1	DUCT BASE, 1", 11" LG WITH ADHESIVE	180-110	14



UNLESS OTHERWISE SPECIFIED TOLERANCE				Pro-Tech Engineering 9117 N. Douglas St. - Madison, Wisconsin 53707 Phone (608) 248-6844 Fax (608) 248-8545	
DIM AS SHOWN .XX F.184 .X F.050 .XX F.020 .XXX F.010 .XXX F.005	TOL. .010 .005 .002 .001 .0005	FINISH TO BE ✓	DATE 08-16-95	DRAWN BY P.R.	DWG SCALE C1
TITLE ASSEMBLY, PANDUIT, MAIN CHASSIS ORCA III / ORCA III T			Dwg 001-231		

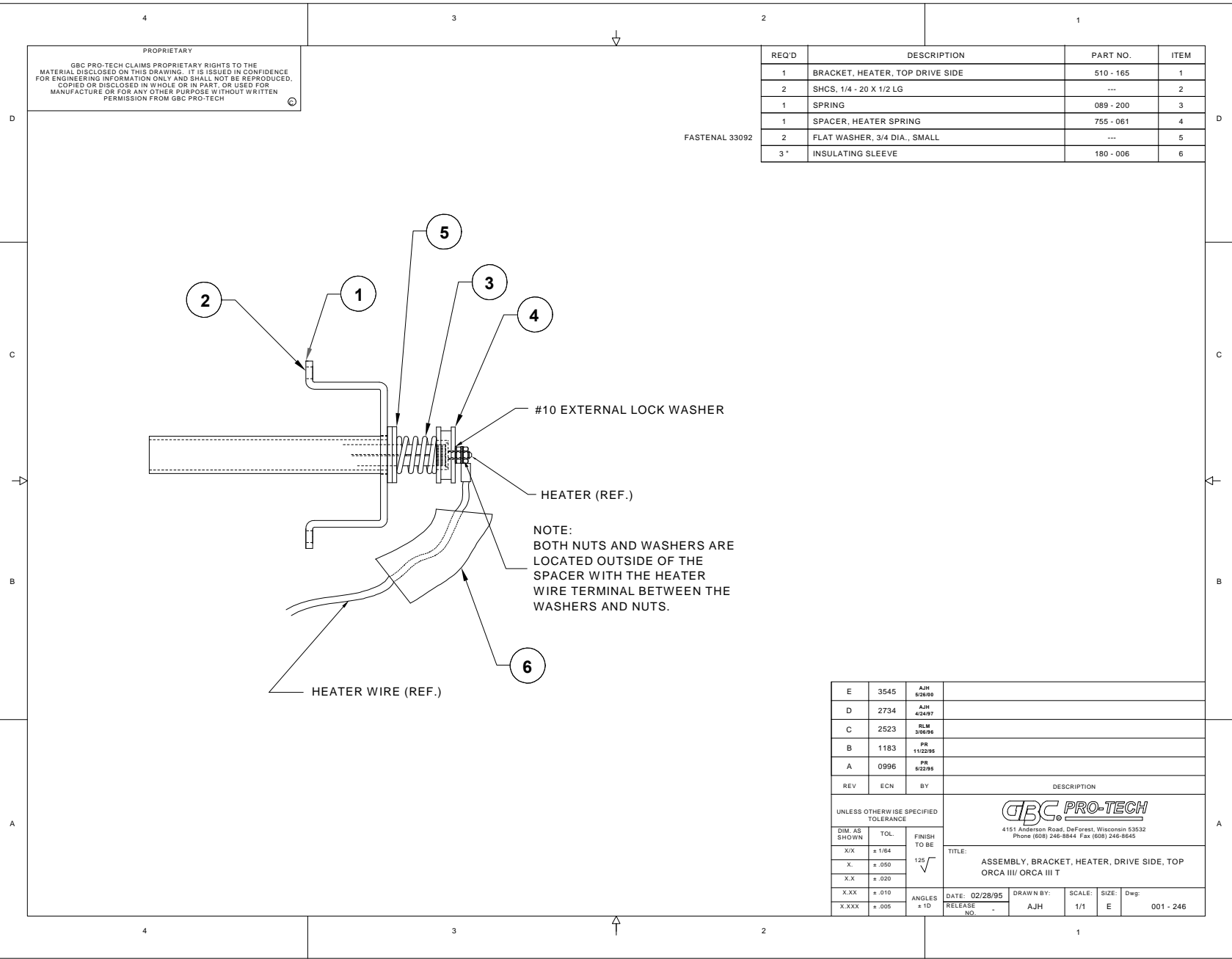
REQ'D	DESCRIPTION	PART NO.	ITEM
1	SHAFT, IDLER	440-110	1
1	SPROCKET, 13T	440-125	2
1	BOLT, MOD., 3/4-16 X 1	505-002	3
1	NUT, JAM, 3/4-16	-	4
1	WASHER, THRUST	032-291	5
1	WASHER, STAR, INT. TOOTH, 3/4	068-002	6
2	WASHER, THRUST	032-130	7
1	BEARING, THRUST	032-120	8
1	WASHER, THRUST	032-145	9



This print is the property of PRO-TECH ENGR. The information thereon is remitted in confidence.					
UNLESS OTHERWISE SPECIFIED TOLERANCE			Pro-Tech Engineering 2117 N. Stoughton Rd. Madison, Wisconsin 53704 Phone (608) 246-8844 Fax (608) 246-4685		
DIM. AS SHOWN	TOL.	FINISH TO BE			
X/X	P 1/64	125			
X.	P .050				
X.X	P .020				
X.XX	P .010	ANGLES P 1D	DATE: 2-23-95	DRAWN BY: P.R.	DWG SCALE: A1
X.XXX	P .005				Dwg: 001-242

REQ'D	DESCRIPTION	PART NO.	ITEM
1	BRACKET, HEATER, TOP DRIVE SIDE	510 - 165	1
2	SHCS, 1/4 - 20 X 1/2 LG	---	2
1	SPRING	089 - 200	3
1	SPACER, HEATER SPRING	755 - 061	4
2	FLAT WASHER, 3/4 DIA., SMALL	---	5
3*	INSULATING SLEEVE	180 - 006	6

PROPRIETARY
 GBC PRO-TECH CLAIMS PROPRIETARY RIGHTS TO THE MATERIAL DISCLOSED ON THIS DRAWING. IT IS ISSUED IN CONFIDENCE FOR ENGINEERING INFORMATION ONLY AND SHALL NOT BE REPRODUCED, COPIED OR DISCLOSED IN WHOLE OR IN PART, OR USED FOR MANUFACTURE OR FOR ANY OTHER PURPOSE WITHOUT WRITTEN PERMISSION FROM GBC PRO-TECH



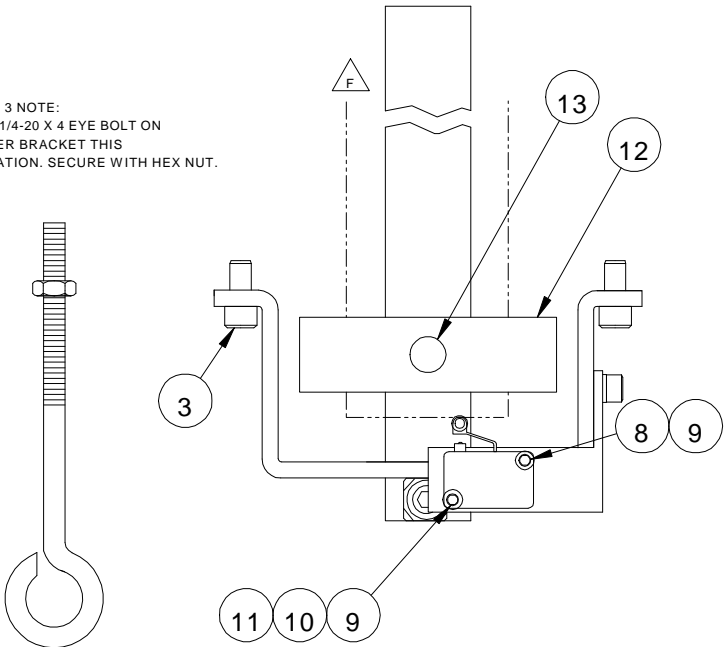
E	3545	AJH	828/95	
D	2734	AJH	4/24/97	
C	2523	RLM	3/08/96	
B	1183	PR	11/22/95	
A	0996	PR	9/22/95	
REV	ECN	BY	DESCRIPTION	
UNLESS OTHERWISE SPECIFIED TOLERANCE				<p>4151 Anderson Road, DeForest, Wisconsin 53532 Phone (608) 246-8244 Fax (608) 246-8245</p>
DIM. AS SHOWN	TOL.	FINISH TO BE	TITLE: ASSEMBLY, BRACKET, HEATER, DRIVE SIDE, TOP ORCA III/ ORCA III T	
X/X	± 1/64	125 √		
X	± .050			
X.X	± .020			
X.XX	± .010	ANGLES ± 10	DATE: 02/28/95	DRAWN BY: AJH
X.XXX	± .005		RELEASE NO.	SCALE: 1/1
				SIZE: E
				Dwg: 001 - 246

REQ'D	DESCRIPTION	PART NO.	ITEM
2	DECAL,DANGER HAZARDOUS VOLTAGE	450-131	1
1	DECAL,WARNING MOVING PARTS	450-132	2
2	DECAL,WARNING CRUSH AND BURN,LEFT	450-133	3
2	DECAL,WARNING CRUSH AND BURN,RIGHT	450-134	4
1	DECAL,WARNING READ MANUAL	450-135	5
1	DECAL,READ SAFETY INSTRUCTIONS	450-136	6
1	DECAL,WARNING,MODIFIED CRUSH/CUT	450-011	7
3	DECAL, ELECTRICAL HAZARD	450-035	8
2	DECAL, ELECTRICAL HAZARD	450-180	9

This print is the property of PRO-TECH ENGR. The information thereon is remitted in confidence.									
UNLESS OTHERWISE SPECIFIED TOLERANCE					Pro-Tech Engineering 2117 N. Stoughton Rd., Madison, Wisconsin 53704 Phone (608) 246-8844 Fax (608) 246-8645				
DIM. AS SHOWN	TOL.	FINISH TO BE							
X/X	P 1/64	125 							
X.	P .050								
X.X	P .020								
X.XX	P .010	ANGLES P 1D							
X.XXX	P .005								
DATE:		DRAWN BY:		DWG SCALE:		Dwg:		001-259	
3-2-95		K.L.		A1					

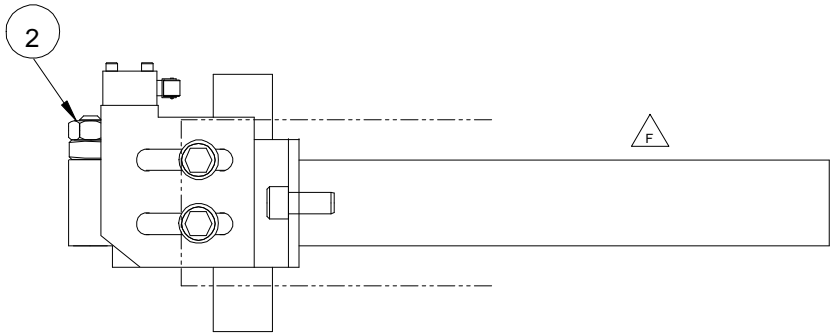
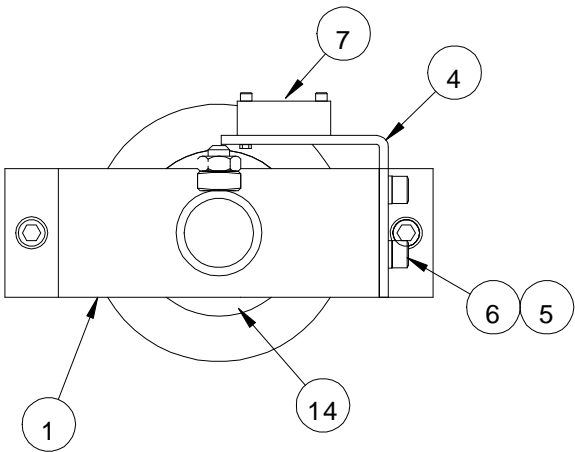
REQ'D	DESCRIPTION	PART NO.	ITEM
1	BRACKET, HEATER, CONTROL SIDE	510-164	1
1	SET SCREW, 1/4-20 X .5 CUP POINT	-	2
2	SHCS, 1/4-20 X .5 LG	-	3
1	BRACKET, MOUNTING, SWITCH, OVERHEAT	510-149	4
2	SHCS, 10-32 X .38	-	5
2	WASHER, FLAT, #10	-	6
1	SWITCH, BASIC, ROLLER LEVER	214-000	7
1	SHCS, #4-40 X .5	-	8
3	WASHER, FLAT, #4	-	9
1	SHCS, #4-40 X .62	-	10
1	NUT, HEX, #4-40	-	11
1	LOCKCOLLAR	290-004	12
1	SETSCREW, 1/2-13, FLAT TIP	-	13
1	NUT, HEX, JAM, 1/4-20	-	14

ITEM 3 NOTE:
USE 1/4-20 X 4 EYE BOLT ON
UPPER BRACKET THIS
LOCATION. SECURE WITH HEX NUT.



ITEM 13 NOTE:
REPLACE STOCK SETSCREW

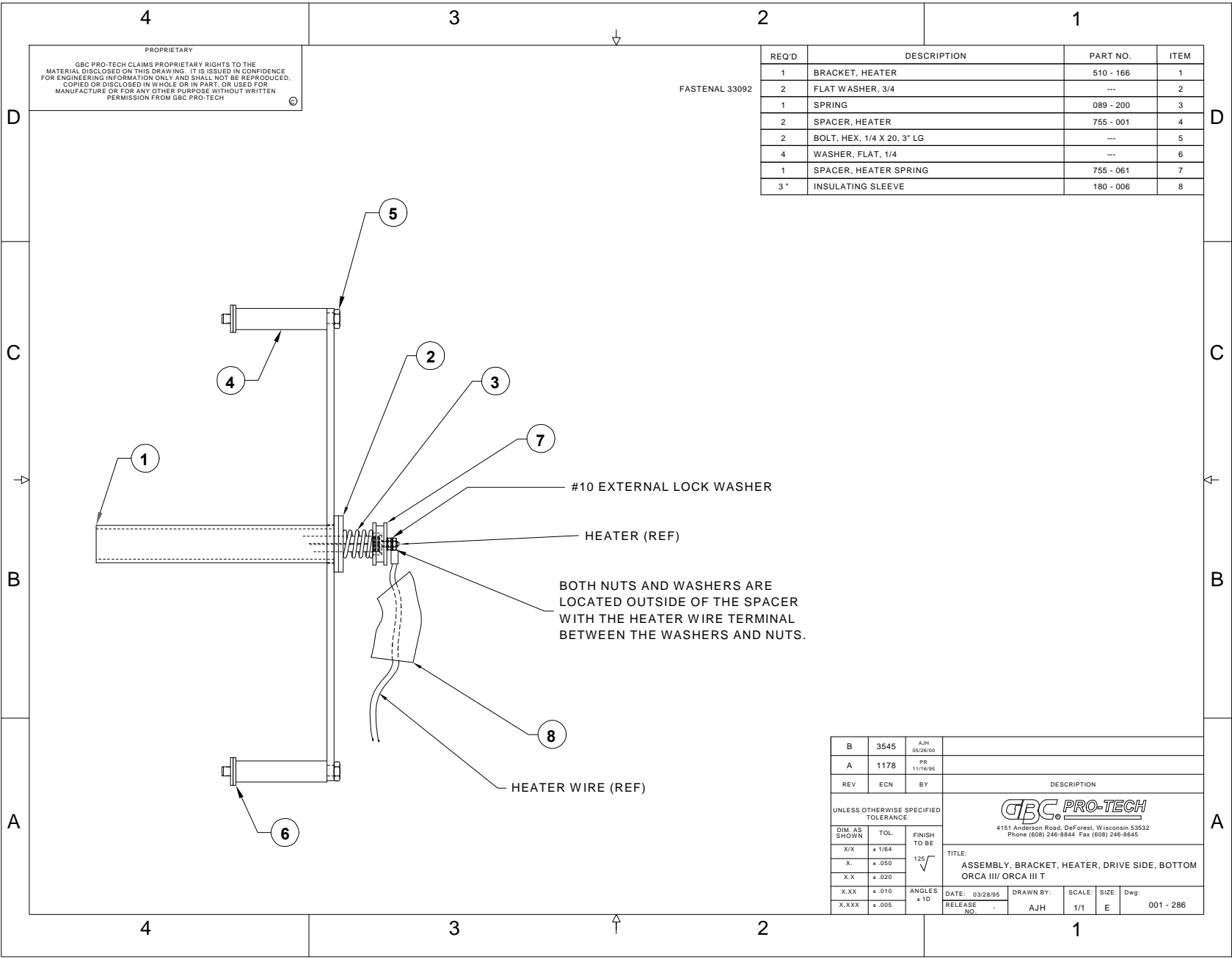
ITEM 9, 10 & 11 NOTE:
USE WASHER, ITEM 9 ON TOP & BOTTOM.



-285 ASSEMBLY

SCALE: 1/2

UNLESS OTHERWISE SPECIFIED TOLERANCE				Pro-Tech Engineering	
DIM AS SHOWN	TOL	FRESH TO BE	2117A, Southington Rd., Madison, Wisconsin 53704 Phone (608) 246-8844 Fax (608) 246-8844		
.XX	± .164	√	TITLE: ASSY, BRKT, HTR, UPPER & LOWER CONTROL SIDE - ORCA III / ORCA III T		
.X	± .025		DATE: 3-28-95		
.XX	± .025		DRAWN BY: P.R.		
.XX	± .014	ANGLES	DWG SCALE: C1	Dwg 001-285	
.XXX	± .002	P 10			



PROPRIETARY
 GBC PRO-TECH CLAIMS PROPRIETARY RIGHTS TO THE MATERIAL DISCLOSED ON THIS DRAWING. IT IS ISSUED IN CONFIDENCE FOR ENGINEERING INFORMATION ONLY AND SHALL NOT BE REPRODUCED, COPIED OR DISCLOSED IN WHOLE OR IN PART, OR USED FOR MANUFACTURE OR FOR ANY OTHER PURPOSE WITHOUT WRITTEN PERMISSION FROM GBC PRO-TECH

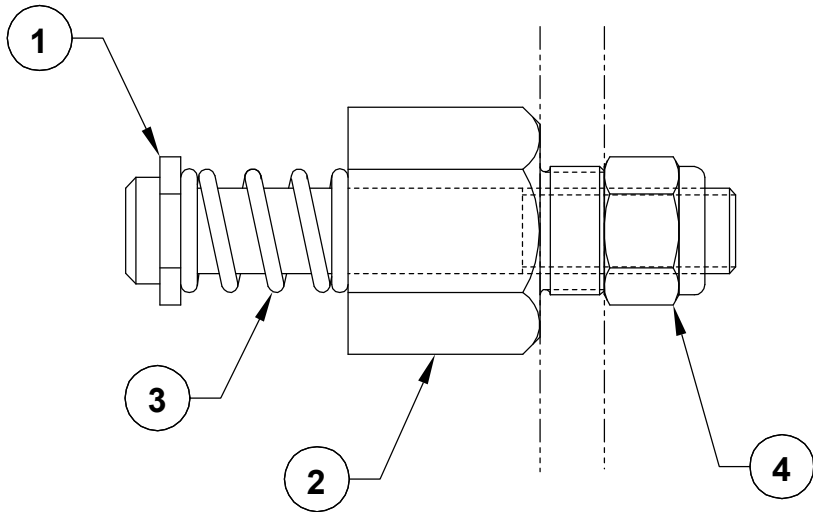
FASTENAL 33092

REQ'D	DESCRIPTION	PART NO.	ITEM
1	BRACKET, HEATER	510 - 166	1
2	FLAT WASHER, 3/4	---	2
1	SPRING	089 - 200	3
2	SPACER, HEATER	755 - 001	4
2	BOLT, HEX, 1/4 X 20, 3" LG	---	5
4	WASHER, FLAT, 1/4	---	6
1	SPACER, HEATER SPRING	755 - 061	7
3"	INSULATING SLEEVE	180 - 006	8

B	3545	AJH	05/26/00	
A	1178	PR	11/16/99	
REV	ECN	BY	DESCRIPTION	
 4151 Anderson Road, DeForest, Wisconsin 53532 Phone (608) 246-8844 Fax (608) 246-8142				
UNLESS OTHERWISE SPECIFIED TOLERANCE				
DIM. AS SHOWN	TOL.	FINISH TO BE		
.X/X	± 1/64	125		
X.	± .050	√		
X.X	± .020			
X.XX	± .010	ANGLES ± 1D		
X.XXX	± .005			
TITLE: ASSEMBLY, BRACKET, HEATER, DRIVE SIDE, BOTTOM ORCA III/ ORCA III T		DATE: 03/28/95	DRAWN BY: AJH	SCALE: 1/1
RELEASE NO. -			SIZE: E	Dwg: 001 - 286

REQ'D	DESCRIPTION	PART NO.	ITEM
1	BOLT, STANDOFF, REMOVABLE IDLER	645-009	1
1	STANDOFF, IDLER, HEX	755-033	2
1	SPRING, COMPRESSION	089-140	3
1	NUT, NYLOCK, 1/2-13	-	4

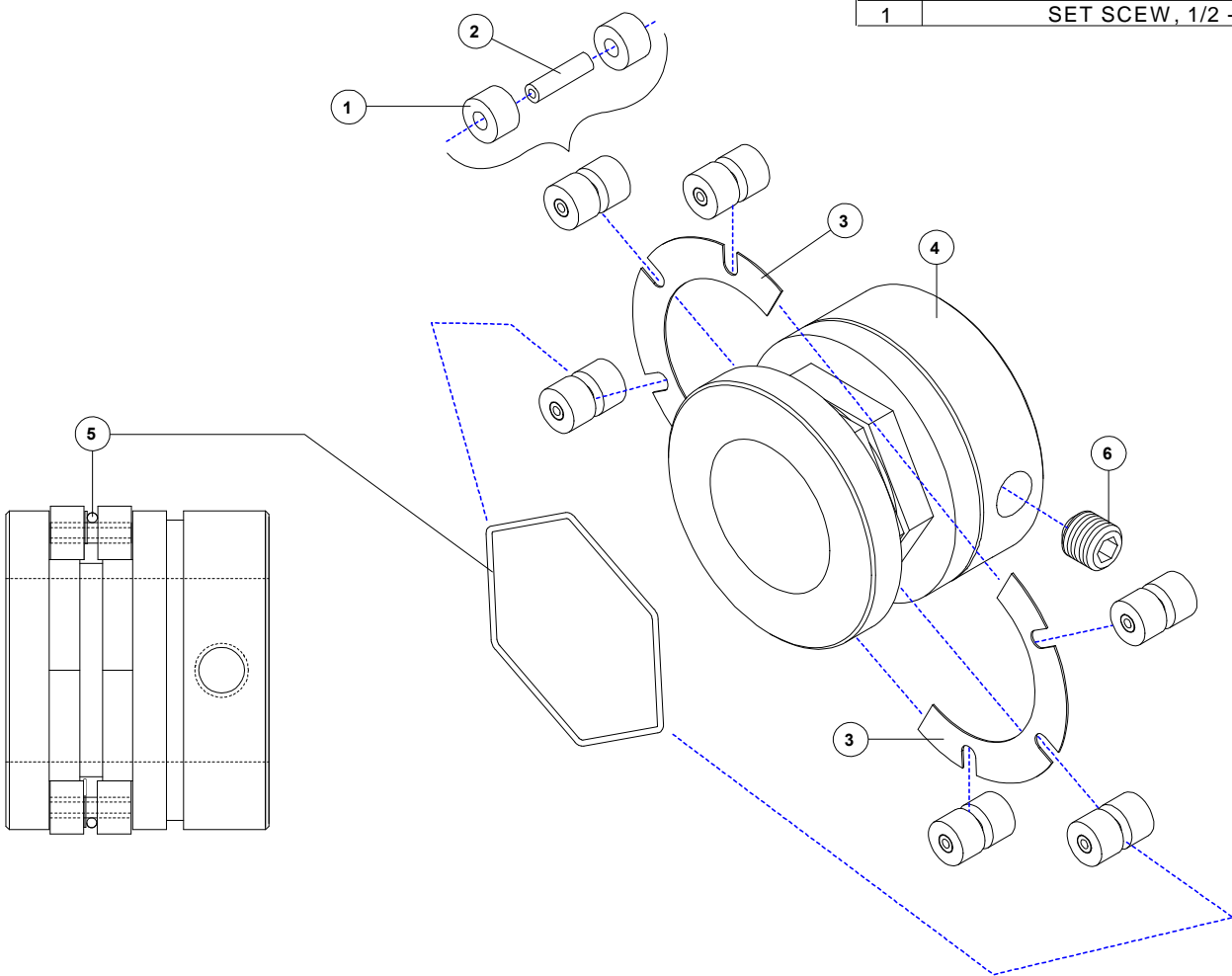
PROPRIETARY
 GBC PRO-TECH CLAIMS PROPRIETARY RIGHTS TO THE MATERIAL DISCLOSED ON THIS DRAWING. IT IS ISSUED IN CONFIDENCE FOR ENGINEERING INFORMATION ONLY AND SHALL NOT BE REPRODUCED, COPIED OR DISCLOSED IN WHOLE OR IN PART, OR USED FOR MANUFACTURE OR FOR ANY OTHER PURPOSE WITHOUT WRITTEN PERMISSION FROM GBC PRO-TECH



SHEET OF		 4151 Anderson Road, DeForest, Wisconsin 53532 Phone (608) 246-8844 Fax (608) 246-8645	
UNLESS OTHERWISE SPECIFIED TOLERANCE			
DIM. AS SHOWN	TOL.	FINISH TO BE 125√	TITLE:
X/X	± 1/64		ASSY, STANDOFF, REMOVABLE IDLER ORCA III / ORCA III T
X.	± .050		
X.X	± .020		
X.XX	± .010		DATE: 05/31/95
X.XXX	± .005	ANGLES ± 1D	PR
REVISION		SCALE: 1/1	SIZE: A
		RELEASE NO.	Dwg: 001-305

QTY.	DESCRIPTION	PART NO.	ITEM NO.
12	ROLLER	068 - 013	1
6	PIN	095 - 106	2
2	CORE, CLIP	530 - 037	3
1	CORE	530 - 036	4
1	O-RING	480 - 006	5
1	SET SCEW, 1/2 - 13 X 1/2	---	6

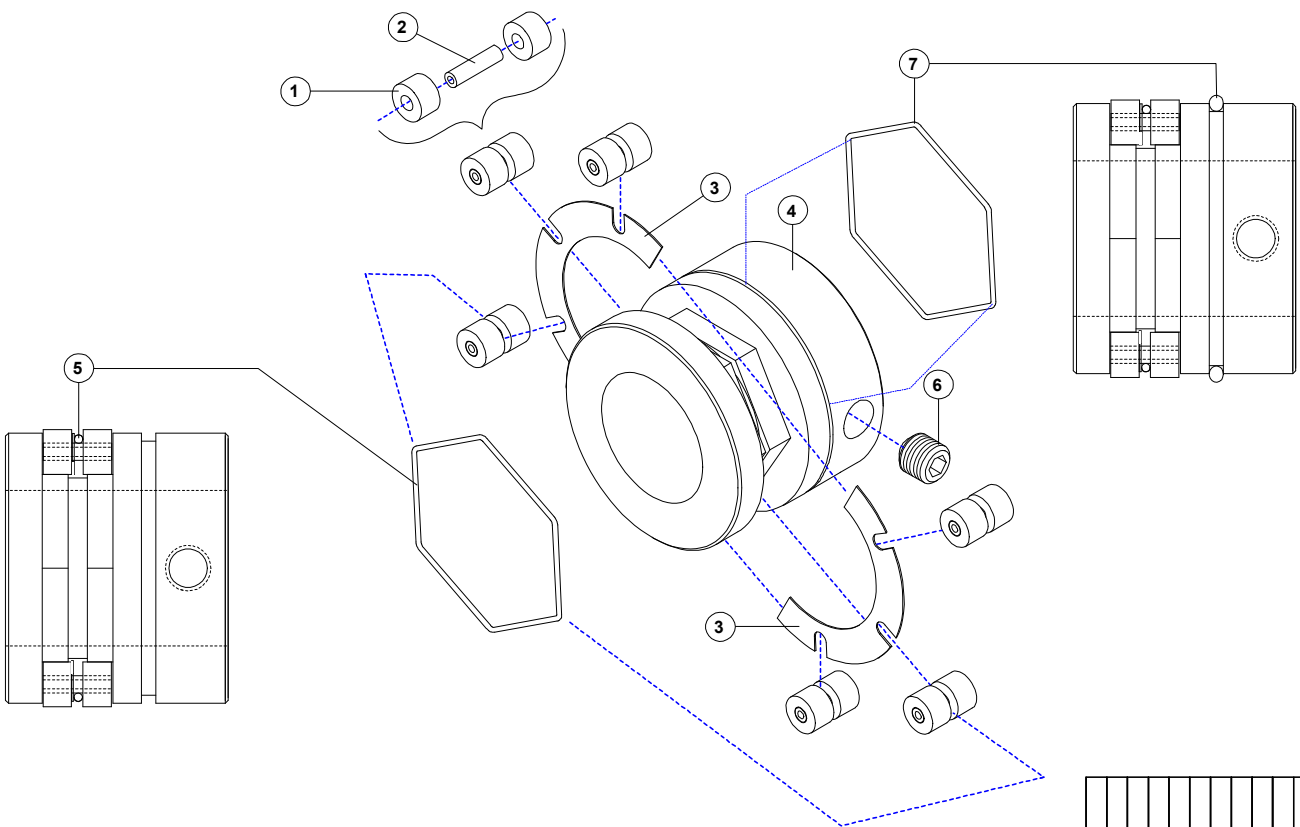
PROPRIETARY
 GBC PRO-TECH CLAIMS PROPRIETARY RIGHTS TO THE MATERIAL DISCLOSED ON THIS DRAWING. IT IS ISSUED IN CONFIDENCE FOR ENGINEERING INFORMATION ONLY AND SHALL NOT BE REPRODUCED, COPIED OR DISCLOSED IN WHOLE OR IN PART, OR USED FOR MANUFACTURE OR FOR ANY OTHER PURPOSE WITHOUT WRITTEN PERMISSION FROM GBC PRO-TECH.



UNLESS OTHERWISE SPECIFIED TOLERANCE			GBC Films Group 4151 Anderson Road, DeForest, WI 53532	
SIN. AS SHOWN	TOL.	FINISH TO BE	TITLE : ASSEMBLY, CORE GRIP, SADDLE SIDE ORCA III / ORCA III T	
XX	±.104	125	DATE :	DRAWN BY :
X	±.009		10/10/00	N/A
XX	±.010	ANGLES ±10	DWG SCALE :	DWG :
XXX	±.008		N/A	N/A
XXXX	±.005			001-601

QTY.	DESCRIPTION	PART NO.	ITEM NO.
12	ROLLER	068 - 013	1
6	PIN	095 - 106	2
2	CORE, CLIP	530 - 037	3
1	CORE	530 - 036	4
1	O-RING	480 - 006	5
1	SET SCEW, 1/2 - 13 X 1/2	---	6
1	O-RING	480 - 007	7

PROPRIETARY
 GBC PRO-TECH CLAIMS PROPRIETARY RIGHTS TO THE MATERIAL DISCLOSED ON THIS DRAWING. IT IS ISSUED IN CONFIDENCE FOR ENGINEERING INFORMATION ONLY AND SHALL NOT BE REPRODUCED, COPIED OR DISCLOSED IN WHOLE OR IN PART, OR USED FOR MANUFACTURE OR FOR ANY OTHER PURPOSE WITHOUT WRITTEN PERMISSION FROM GBC PRO-TECH



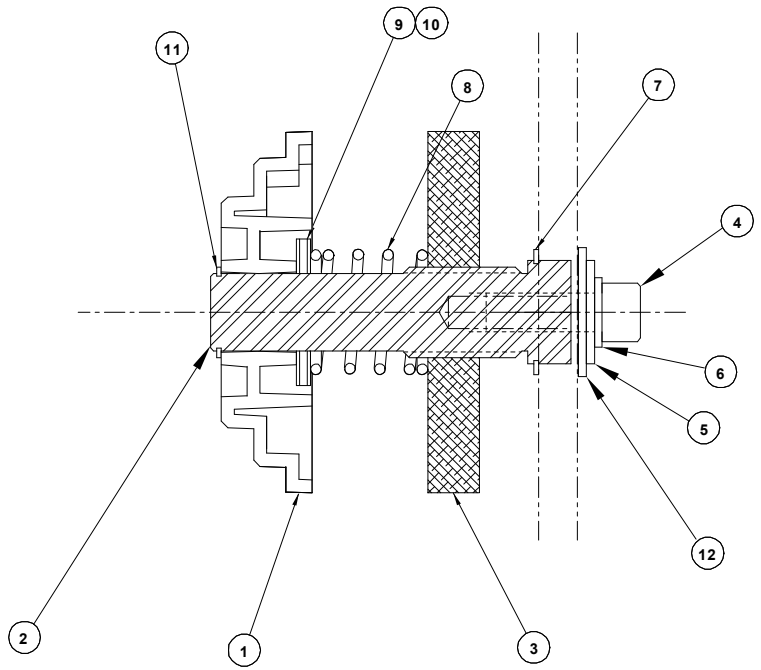
UNLESS OTHERWISE SPECIFIED TOLERANCE				FINISH TO BE			
DIM. AS SHOWN	TOL.						
XX	±.154						
X	±.050						
XX	±.010						
XXX	±.005						
XXXX	±.002						

This print is the property of GBC Films Group. The information herein is limited to confidence.			
GBC Films Group			
4151 Anderson Road, DeForest, WI 53532			
TITLE :			
ASSEMBLY, CORE GRIP, PIVOT SIDE			
ORCA III / ORCA III T			
DATE:	DRAWN BY:	DWG. SCALE:	DWG. NO.:
10/10/00	N/A	N/A	001-602

REQ'D	DESCRIPTION	PART NO.	ITEM
1	CORE SUPPORT, MOLDED	530-040	1
1	SHAFT, REWIND, STANDOFF	X92-0113	2
1	KNOB, CLUTCH, KNURLED	625-007	3
1	3/ 8 - 16 X 1 LG SHCS	-	4
1	3/ 8 FLATWASHER	-	5
1	3/ 8 LOCK WASHER	-	6
1	SNAP RING, 1" SHAFT	090-140	7
1	SPRING, 1" ID X 1 - 3/ 8 LG	089-200	8
2	WASHER, THRUST, .030 THK	032-242	9
1	BEARING, THRUST	032-390	10
1	SNAP RING, 3/4 SHAFT, EXTERNAL	090-135	11
1	USS F / W 7/ 16	-	12

NOTE:
001-625 IS SAME AS 001-439, EXCEPT (2) 032-300
ARE DELETED FROM 001-439 TO ACHIEVE 001-625.

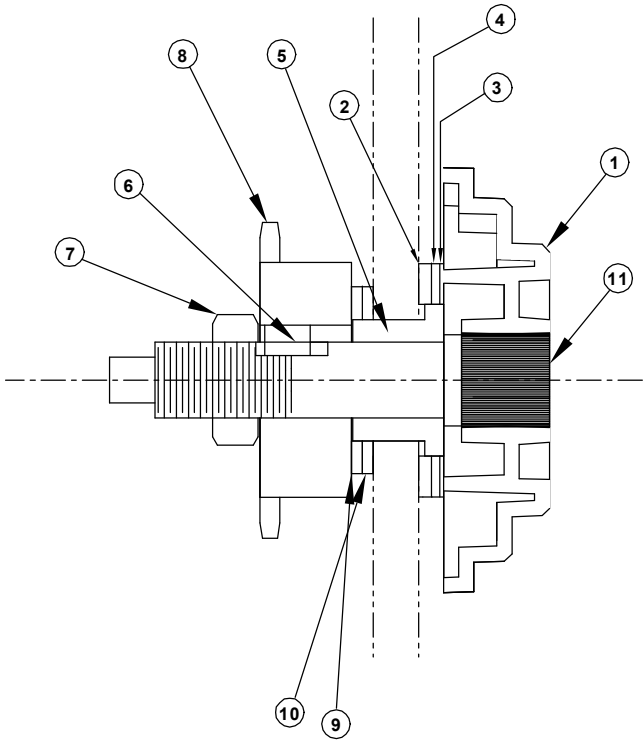
PROPRIETARY
GBC PRO-TECH CLAIMS PROPRIETARY RIGHTS TO THE
MATERIAL DISCLOSED ON THIS DRAWING. IT IS ISSUED IN CONFIDENCE
FOR ENGINEERING INFORMATION ONLY AND SHALL NOT BE REPRODUCED,
COPIED OR DISCLOSED IN WHOLE OR IN PART, OR USED FOR
MANUFACTURE OR FOR ANY OTHER PURPOSE WITHOUT WRITTEN
PERMISSION FROM GBC PRO-TECH



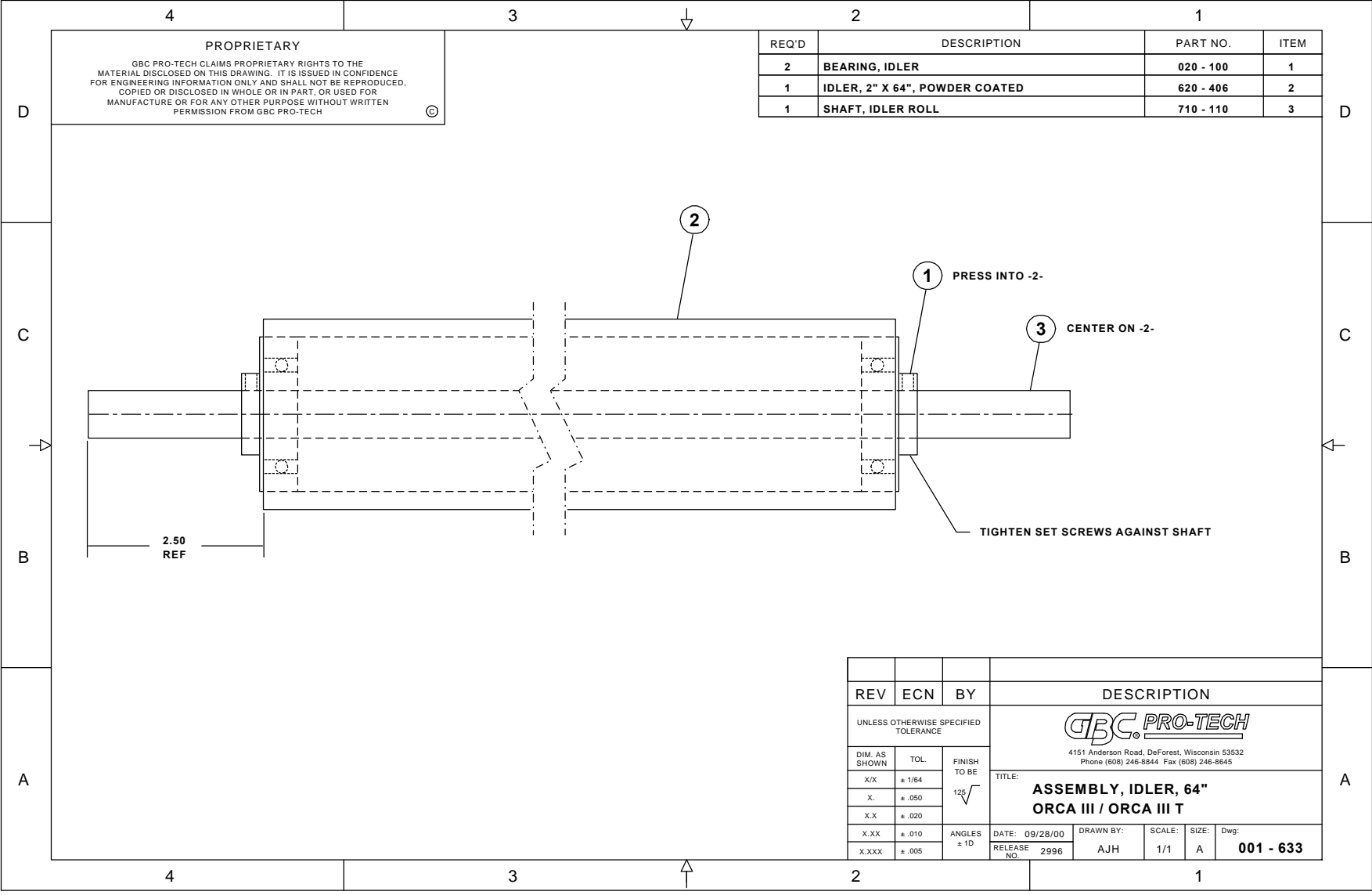
REV	ECN	BY	DESCRIPTION
UNLESS OTHERWISE SPECIFIED TOLERANCE			GBC PRO-TECH 4151 Anderson Road, DeForest, Wisconsin 53532 Phone (808) 246-8844 Fax (808) 246-8845
DIM. AS SHOWN	TOL.	FINISH TO BE	
X/X	± 1/64	125	
X.	± .050		
X.X	± .020		
X.XX	± .010	ANGLES ± 10	DATE: 08/14/00 DRAWN BY: SCALE: SIZE: Dwg: 1/1 B 001-625
X.XXX	± .005		RELEASE NO: 2849 AJH

REQ'D	DESCRIPTION	PART NO.	ITEM
1	CORE SUPPORT, MOLDED	530 - 040	1
1	WASHER, THRUST, .090 THK	032 - 420	2
1	WASHER, THRUST, .030 THK	032 - 410	3
1	BEARING, THRUST	032 - 400	4
1	BUSHING	040 - 003	5
1	KEY, 1/ 4 X 1/ 4 X 3/8 LG	-	6
1	NYLOCK NUT, 5/ 8 - 11	-	7
1	SPROCKET, 35BS20 X 5/ 8	435 - 175	8
2	WASHER, THRUST, .090 THK	032 - 205	9
1	BEARING, THRUST	032 - 190	10
1	SHAFT, REWIND DRIVE	710 - 132	11

PROPRIETARY
 GBC PRO-TECH CLAIMS PROPRIETARY RIGHTS TO THE MATERIAL DISCLOSED ON THIS DRAWING. IT IS ISSUED IN CONFIDENCE FOR ENGINEERING INFORMATION ONLY AND SHALL NOT BE REPRODUCED, COPIED OR DISCLOSED IN WHOLE OR IN PART, OR USED FOR MANUFACTURE OR FOR ANY OTHER PURPOSE WITHOUT WRITTEN PERMISSION FROM GBC PRO-TECH



REV	ECN	BY	DESCRIPTION
UNLESS OTHERWISE SPECIFIED TOLERANCE			 4151 Anderson Road, DeForest, Wisconsin 53532 Phone (608) 246-8844 Fax (608) 246-8645
DIM. AS SHOWN	TOL.	FINISH TO BE	
XX	± 1/64	125	
X	± .050		
X.X	± .020		TITLE: ASSEMBLY, REWIND, DRIVE ORCA III / ORCA III T
X.XX	± .010	ANGLES ± 1D	DATE: 08/14/00
X.XXX	± .005		RELEASE NO. 2850
		DRAWN BY: AJH	SCALE: 1/1
			SIZE: B
			Dwg: 001-626



PROPRIETARY
 GBC PRO-TECH CLAIMS PROPRIETARY RIGHTS TO THE MATERIAL DISCLOSED ON THIS DRAWING. IT IS ISSUED IN CONFIDENCE FOR ENGINEERING INFORMATION ONLY AND SHALL NOT BE REPRODUCED, COPIED OR DISCLOSED IN WHOLE OR IN PART, OR USED FOR MANUFACTURE OR FOR ANY OTHER PURPOSE WITHOUT WRITTEN PERMISSION FROM GBC PRO-TECH

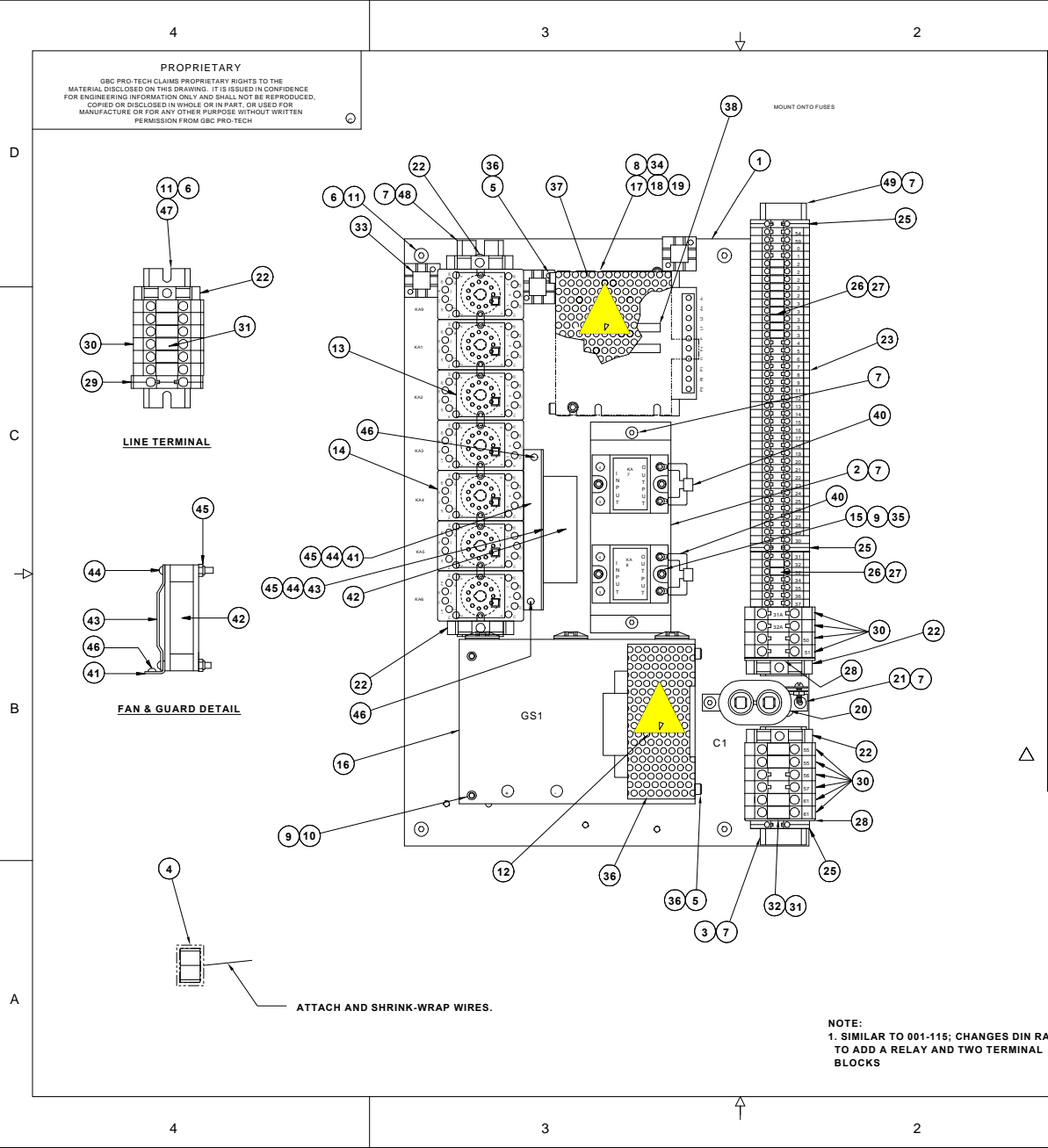
REQ'D	DESCRIPTION	PART NO.	ITEM
2	BEARING, IDLER	020 - 100	1
1	IDLER, 2" X 64", POWDER COATED	620 - 406	2
1	SHAFT, IDLER ROLL	710 - 110	3

REV	ECN	BY	DESCRIPTION
UNLESS OTHERWISE SPECIFIED TOLERANCE			 4151 Anderson Road, DeForest, Wisconsin 53532 Phone (608) 246-8844 Fax (608) 246-8645
DIM. AS SHOWN	TOL.	FINISH TO BE	
XX	± 1/64	12 [√]	TITLE: ASSEMBLY, IDLER, 64" ORCA III / ORCA III T
X.	± .050		
XX	± .020	ANGLES ± 1D	DATE: 09/28/00
X.XX	± .010	RELEASE NO. 2996	DRAWN BY: AJH
X.XXX	± .005		SCALE: 1/1
			SIZE: A
			Dwg: 001 - 633

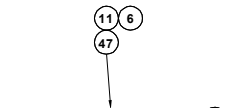
REQ'D	DESCRIPTION	PART NO.	ITEM
4	ASSY, SLITTER, INFEED/ OUTFEED	001 - 122	1
2	ASSEMBLY, OUTFEED SLITTER	001 - 109	2
4	FUSE, 1-1/4 X 1/4, SB, 3AG	186 - 200	3
4	PAD LEVELING	470 - 100	4
1	TAPE MASKING	475 - 000	5
1	BOX, ACCESSORY	475 - 010	6
1	MEASURE, TAPE	475 - 100	7
1	WRENCH, ALLEN, T-HANDLE, 1/4	475 - 210	8
2	BLADE, HOOKED	475 - 300	9
1	KNIFE, ZIPPY	475 - 620	10
1	COUPLING, 1/4, AIR FITTING	330 - 000	11
1	AIR HOSE, W/ FITTINGS, 12 FT	360 - 000	12
4	O-RING, BRAKE	480 - 005	13
1	ERASER, CHARRETTE	930320	14
1	MANUAL, OPERATION, ORCA III/ III T	930 - 062	15
1	WRENCH, ALLEN, 1/4, MODIFIED	485 - 001	16
1	BLADE, CIRCULAR	475 - 001	17
1	STRAIN RELIEF, MAIN POWER	175 - 201	18
1	WRENCH, T-HANDLE, 3/16"	475 - 200	19
1	BRAKE PAD, UNWIND/ REWIND	375 - 000	20
1	BRAKE, MOUNTED, UNWIND/ REWIND	625 - 006	21

PROPRIETARY
 GBC PRO-TECH CLAIMS PROPRIETARY RIGHTS TO THE MATERIAL DISCLOSED ON THIS DRAWING. IT IS ISSUED IN CONFIDENCE FOR ENGINEERING INFORMATION ONLY AND SHALL NOT BE REPRODUCED, COPIED OR DISCLOSED IN WHOLE OR IN PART, OR USED FOR MANUFACTURE OR FOR ANY OTHER PURPOSE WITHOUT WRITTEN PERMISSION FROM GBC PRO-TECH ©

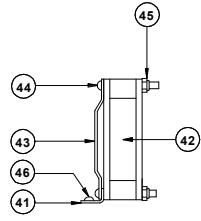
REV	ECN	BY	DESCRIPTION						
UNLESS OTHERWISE SPECIFIED TOLERANCE			 4151 Anderson Road, DeForest, Wisconsin 53532 Phone (608) 246-8844 Fax (608) 246-8645						
DIM. AS SHOWN	TOL.	FINISH TO BE							
X/X	± 1/64	125√	DATE: 11/03/00	DRAWN BY:	SCALE:	SIZE:	Dwg:		
X.	± .050		RELEASE NO. 3028	AJH	1/1	E	001 - 639		
X.X	± .020		ANGLES ± 1D						
X.XX	± .010								
X.XXX	± .005								



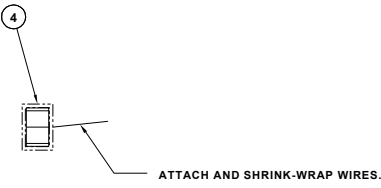
PROPRIETARY
 GBC PRO-TECH CLAIMS PROPRIETARY RIGHTS TO THE MATERIAL DISCLOSED ON THIS DRAWING. IT IS ISSUED IN CONFIDENCE FOR ENGINEERING INFORMATION ONLY AND SHALL NOT BE REPRODUCED, COPIED OR DISCLOSED IN WHOLE OR IN PART, OR USED FOR MANUFACTURE OR FOR ANY OTHER PURPOSE WITHOUT WRITTEN PERMISSION FROM GBC PRO-TECH



LINE TERMINAL



FAN & GUARD DETAIL



ATTACH AND SHRINK-WRAP WIRES.

NOTE:
 1. SIMILAR TO 001-115; CHANGES DIN RAILS TO ADD A RELAY AND TWO TERMINAL BLOCKS

REQ'D	DESCRIPTION	PART NO.	ITEM
1	PANEL	670 - 004	1
1	MODIFIED, HEATSINK	610 - 100	2
1	DIN RAIL	217 - 003	3
1	SWITCH, FWD/ REV	214 - 280	4
4	SHCS 10 - 32 X 5	---	5
6	1/ 4" EXTERNAL TOOTH STARWASHER	---	6
10	BHCS, 10 - 32 X .375	---	7
2	SHCS, 10 - 32 X .375	---	8
12	SHCS, 8 - 32 X .375	---	9
4	SPACER, THREADED, HEX, 8 - 32	120 - 002	10
6	BHCS, 1/ 4 - 20 X .375	---	11
2	DECAL, WARNING, HIGH VOLTAGE	450 - 035	12
7	RELAY, 24 VDC	207 - 006	13
7	BASE, RELAY	207 - 007	14
2	RELAY, SOLID STATE, 90 AMP, 480 VOLT	207 - 005	15
1	POWER SUPPLY, DC	245 - 200	16
1	CONTROLLER, MOTOR, KBLCC - 240 DS	220 - 160	17
1	BOARD, BARRIER	220 - 110	18
1	RESISTOR, HP	220 - 130	19
1	CAPACITOR, FAN, 4 OHM, 370 VAC	185 - 081	20
1	BRACKET, CAPACITOR MOUNT	100 - 015	21
5	RAIL END	217 - 170	22
40	TERMINAL, BLUE, 4 MM	217 - 270	23
7	TERMINAL, 4 MM	217 - 120	24
3	TERMINAL, GROUND, 4 MM	217 - 140	25
12	BAR, JUMPER, 4 MM	217 - 240	26
12	COVER, JUMPER, 4 MM	217 - 250	27
2	END COVER, TERMINAL, 10 MM	217 - 215	28
1	TERMINAL, GROUND, 10 MM	217 - 235	29
16	TERMINAL, 10 MM	217 - 220	30
10	BAR, JUMPER, 10 MM	217 - 245	31
10	COVER, JUMPER, 10 MM	217 - 255	32
6	BASE, TIE	175 - 004	33
2	FUSE, 250 V, 20 AMP, CERAMIC	186 - 135	34
2	COVER, RELAY	207 - 003	35
4	NUT, 10 - 32 NYLOCK	---	36
1	GUARD, MOTOR CONTROLLER	585 - 011	37
2	GUARD, FUSE, MOTOR CONTROLLER	585 - 012	38
1	GUARD, POWER SUPPLY	585 - 010	39
2	ASSEMBLY, MOV FOR O-III SSR	001 - 342	40
1	BRACKET, FAN, HEATSINK	510 - 265	41
1	FAN, HEATSINK, 24 VDC	182 - 000	42
1	GUARD, FAN	182 - 012	43
4	PHMS 6 - 32 X 1.50	---	44
4	NUT, NYLOCK, 6 - 32 X 1.50	---	45
2	BHCS 10 - 32 X .25	---	46
1	DIN RAIL	217 - 005	47
1	DIN RAIL	217 - 208	48
1	DIN RAIL	217 - 205	49

REV	ECN	BY	DESCRIPTION
UNLESS OTHERWISE SPECIFIED TOLERANCE			GBC PRO-TECH 4151 Anderson Road, DeForest, Wisconsin 53532 Phone (800) 246-0844 Fax (800) 246-0845
DIM. AS SHOWN	TOL.	FINISH TO BE	
.XX	± .154	120	TITLE
X	± .050		ASSEMBLY, ELECTRICAL PANEL
X.X	± .020		ORCA III / ORCA III T
X.XX	± .010	ANGLES	DATE: 11/5/00 DRAWN BY: SCALE: SIZE: Dwg
X.XXX	± .005	*10	REVISION: 3031 AJH 1/1 A 001 - 640