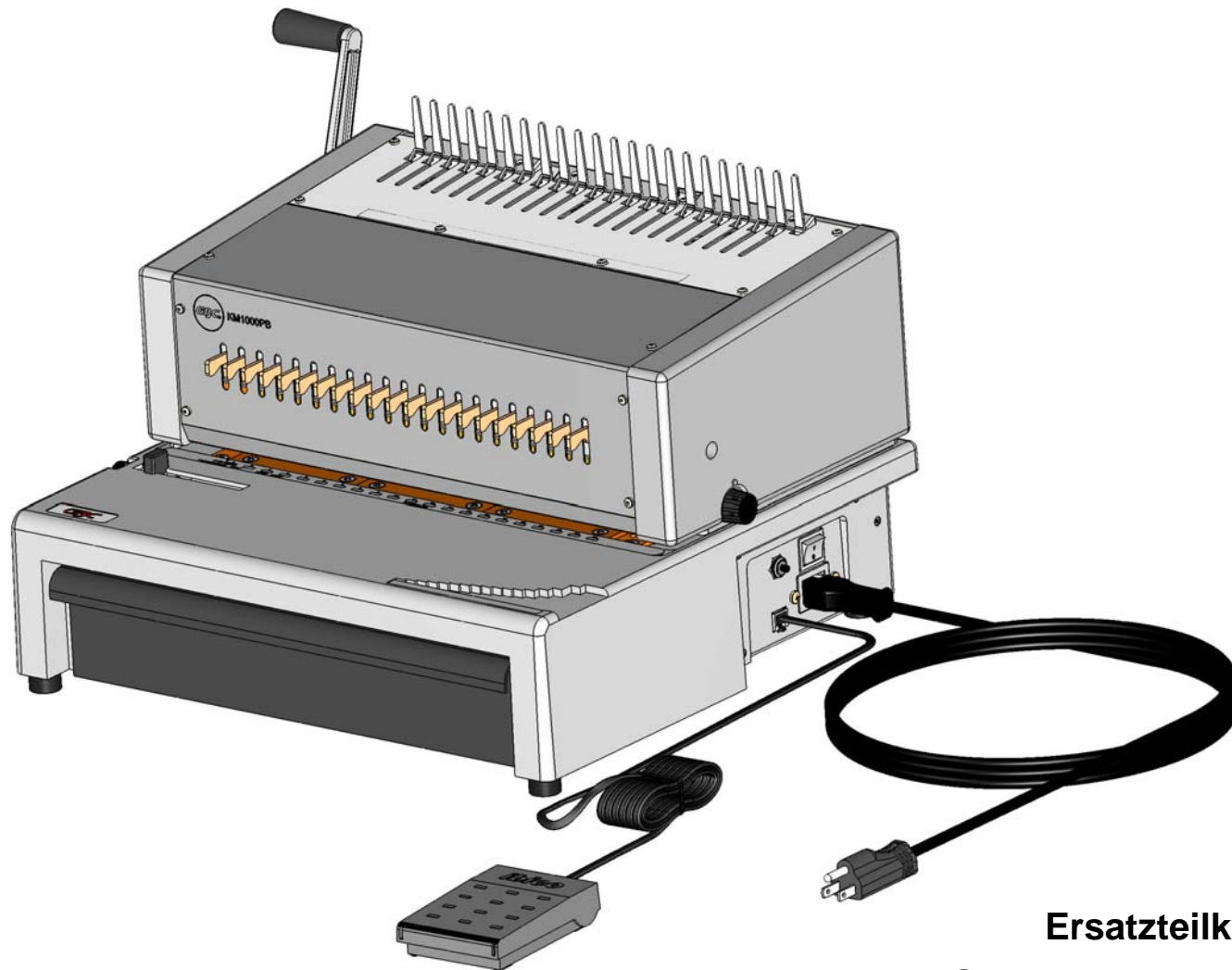


GBC KM1000PB



Ersatzteilkatalog  
Spare parts catalogue  
Catalogue des pièces détachées  
Catálogo de peças

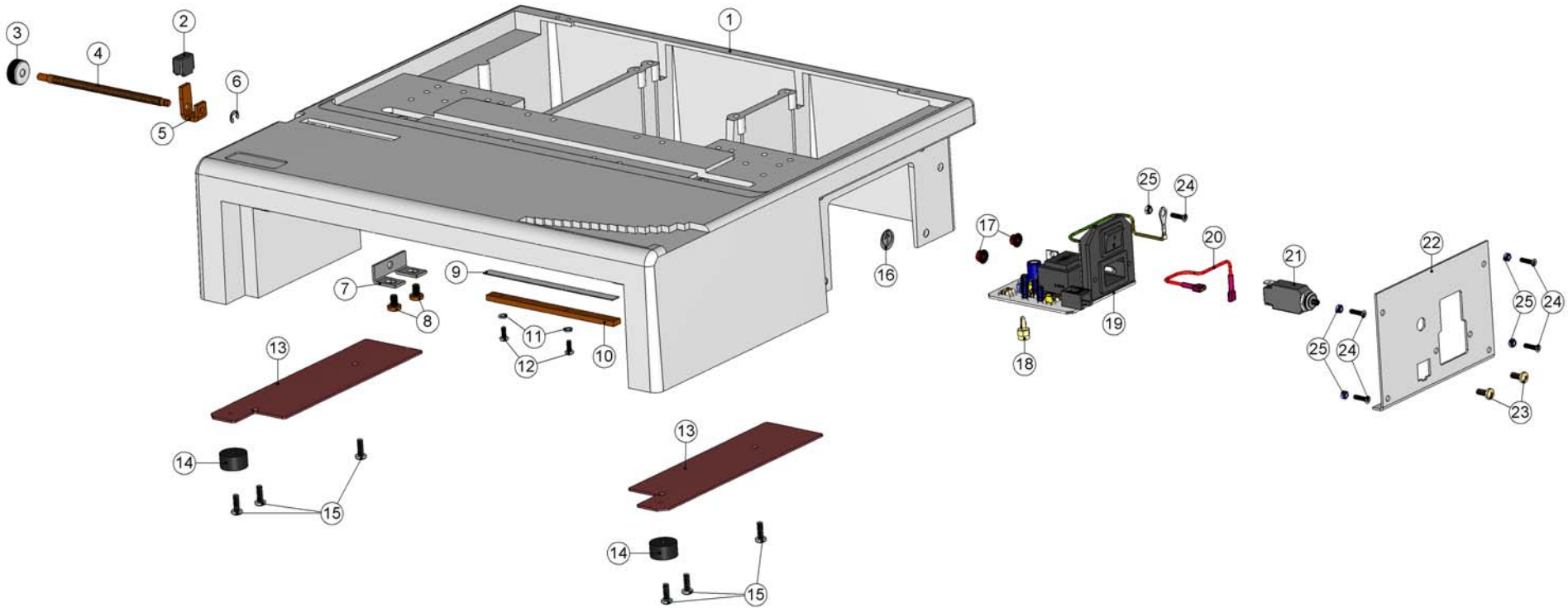
<i>Edition</i>	<i>Serial No.</i>	<i>Date</i>	<i>Name</i>
1	REP0001-	May 2005	GBC Portuguesa



	<i>Version</i>	<i>Product No.</i>
	GBC KM1000PB	7707330

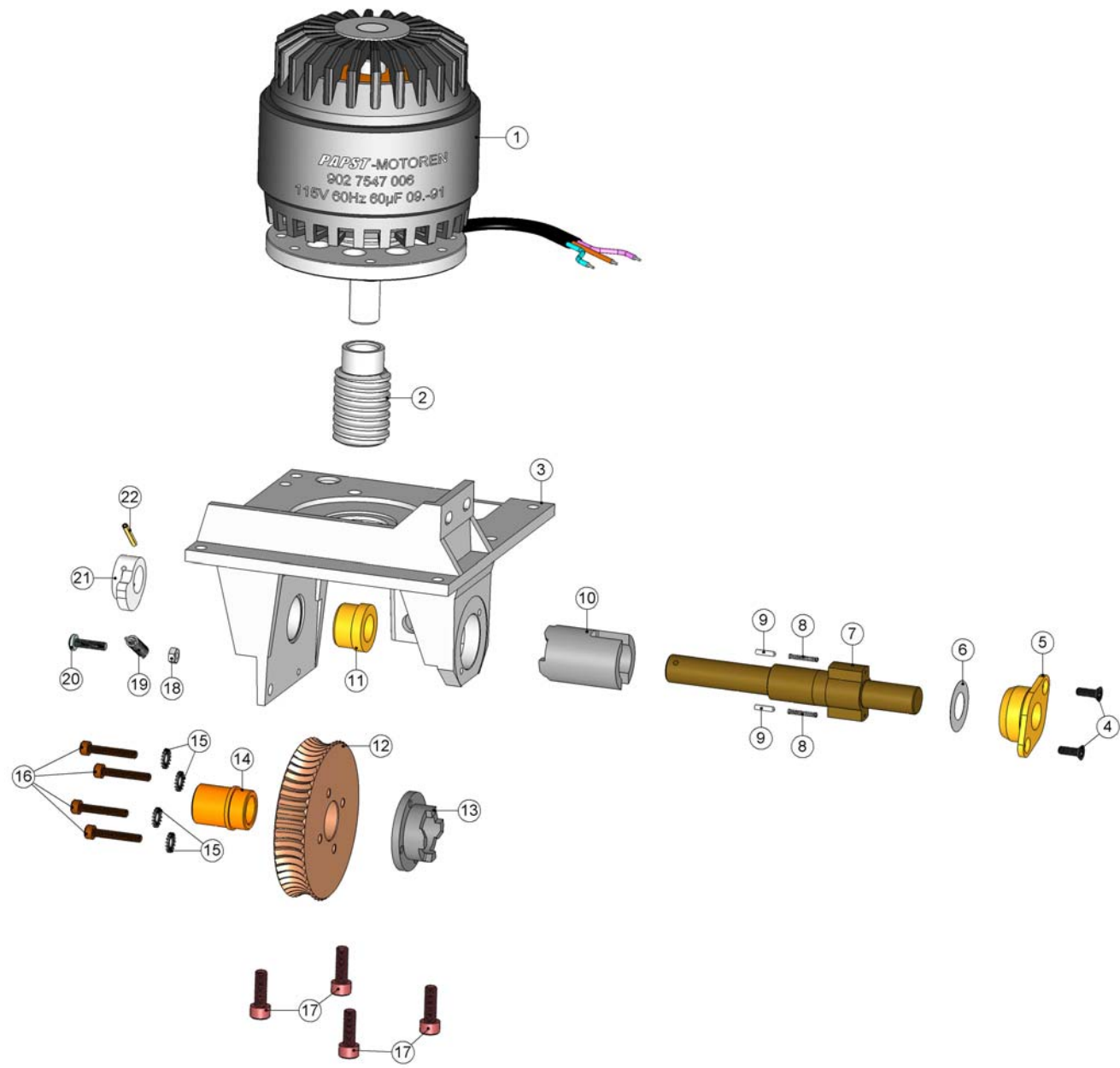


Product GBC KM1000PB	Serial No. REP0001-	Date May 2005	Page / of 3 / 23
-------------------------	------------------------	------------------	---------------------



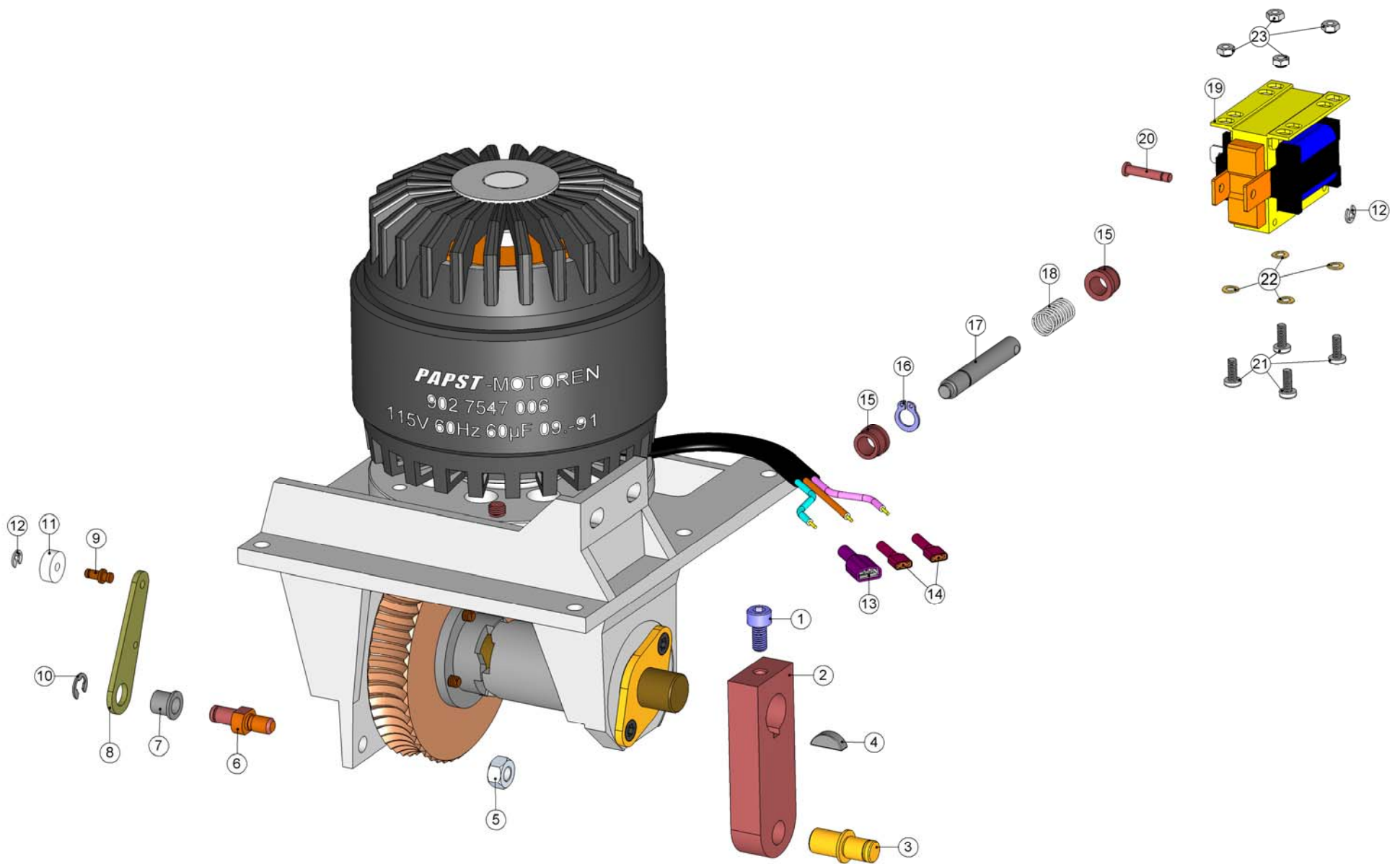
<b>Page/of</b>	<b>Product</b>	<b>Serial No.</b>	<b>Date</b>
4 / 23	GBC KM1000PB	REP0001-	May 2005

<b>Pos.</b>	<b>New Part No.</b>	<b>Old Part No.</b>	<b>Notes</b>	<b>Pre-Assemble Set</b>	<b>Description</b>
1	2-2200	----	----	----	Chassis EPK-21 ( 230V )
2	2-3305	----	----	----	Paper side stop
3	2-3307	----	----	1-1354.29	Spindle cpl.
4	2-3306	----	----	1-1354.29	Spindle cpl.
5	2-3304	----	----	----	Side stop
6	9-9509	----	DIN 6799	----	Retaining washer, loose 4
7	2-3308	----	----	----	Spindle holder
8	9-9054	----	DIN 7500 C / M5x8	----	Self drilling torx screw
9	2-3398	----	----	----	Plastic binders scale inches
10	2-3303	----	----	----	Strip
11	9-9417	----	DIN 127 B / M3	----	Spring lock washer
12	9-9030	----	DIN 7500 C / M3x8	----	Duo-Taptite-scr.w.ch. h.
13	2-2298	----	----	----	Drawer guide
14	2-2271	----	----	----	Rubber foot ( EPK )
15	9-9059	----	DIN 7500 C / M4x12	----	Self drilling torx screw
16	2-2678	----	----	----	Grounded sign
17	9-9217	----	BN 2798 / M4	----	Hexagon stop tooth nut
18	2-2742	----	M4, L=9	----	Distance clip
19	2-2738	----	----	----	Electronic circuit EPK-21( 115V )
20	1-1442	----	----	----	Stranded wire, cpl.
21	2-2287	----	----	----	Safety switch 115V ( 4A )
22	2-2322	----	----	----	Platine
23	9-9027	----	DIN 7985 A / M4x10	----	Cross rec.raised ch.h.s.
24	9-9084	----	DIN 965 A / M3x12	----	Cross rec.count.h. screw
25	9-9207	----	BN 201 / M3 H=0,9	----	Nut



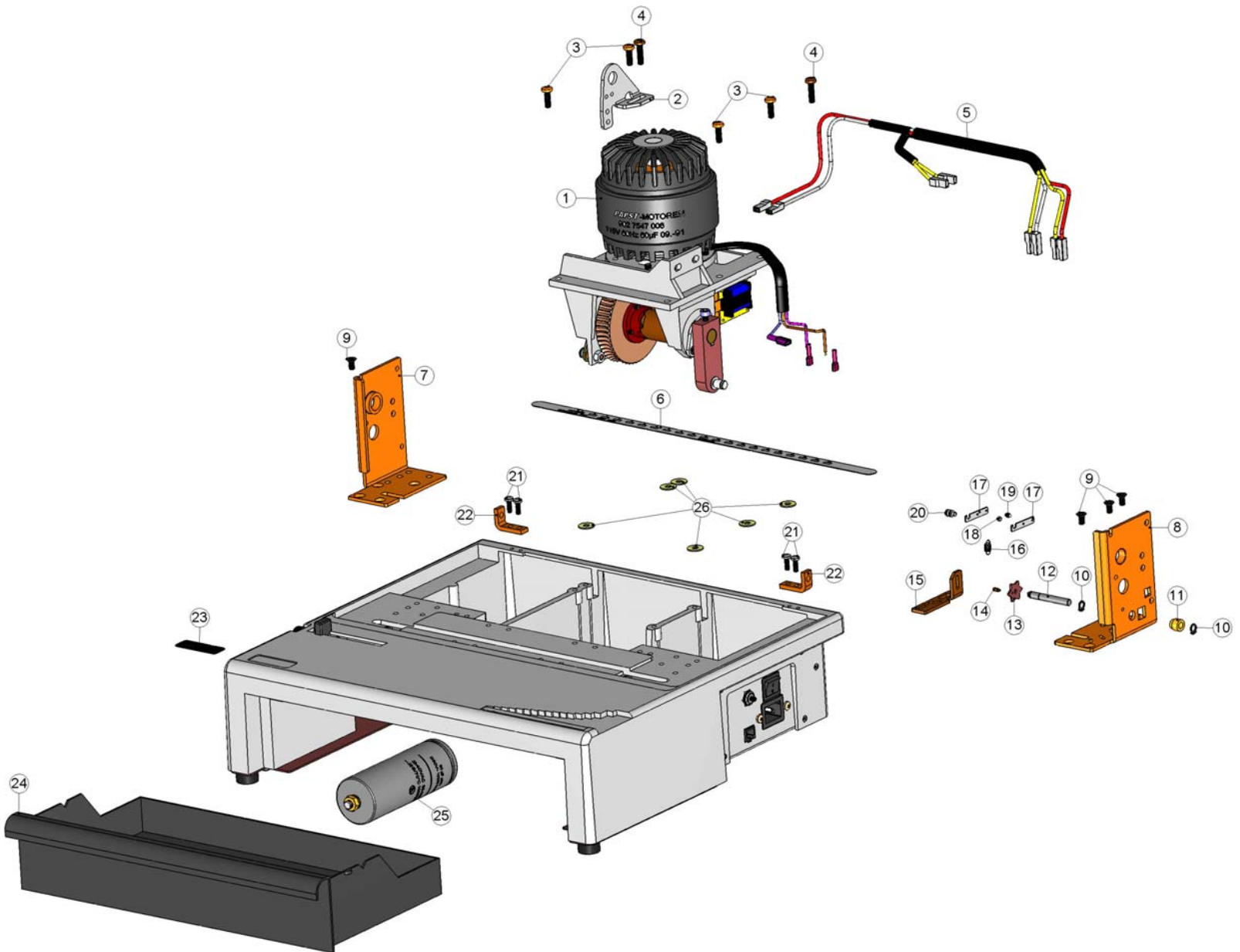
Page/of	Product	Serial No.	Date
6 / 23	GBC KM1000PB	REP0001-	May 2005

<b>Pos.</b>	<b>New Part No.</b>	<b>Old Part No.</b>	<b>Notes</b>	<b>Pre-Assemble Set</b>	<b>Description</b>
1	2-2215	----	----	----	Motor 115 V
2	2-2202	----	----	----	Worm
3	2-2218	----	----	----	Gearing chassis ( EPK / E-Karo 40 / EP )
4	9-9099	----	DIN 7500 M / M4x12	----	Self drilling torx he sc
5	2-2235	----	----	----	Flange bearing
6	9-9307	----	DIN 988 / 14/26x01	----	Shim ring
7	2-2206	----	----	----	Axle
8	2-2242	----	----	----	Pressure spring
9	9-9603	----	DIN 6325 / 2.5x10	----	Parallel pin
10	2-2205	----	----	----	Tube
11	2-2126	----	----	----	Bearing bush
12	2-2201	----	----	----	Worm gear
13	2-2204	----	----	----	Splineway
14	2-2203	----	----	----	Bearing
15	9-9402	----	DIN 6798 A / M5	----	Fan disc
16	9-9060	----	DIN 912 12.9 / M4x25	----	Hex. socket h. cap screw
17	9-9012	----	DIN 912 12.9 / M6x18	----	Hex. socket h. cap screw
18	9-9204	----	DIN 934 / M4	----	Hexagon thin nut 0,8 D
19	2-2244	----	----	----	Tension spring
20	9-9067	----	DIN 7500 C / M4x16	----	Self drilling torx screw
21	2-2214	----	----	----	Cam
22	9-9616	----	DIN 7343 / 2.5x20	----	Spiral pin



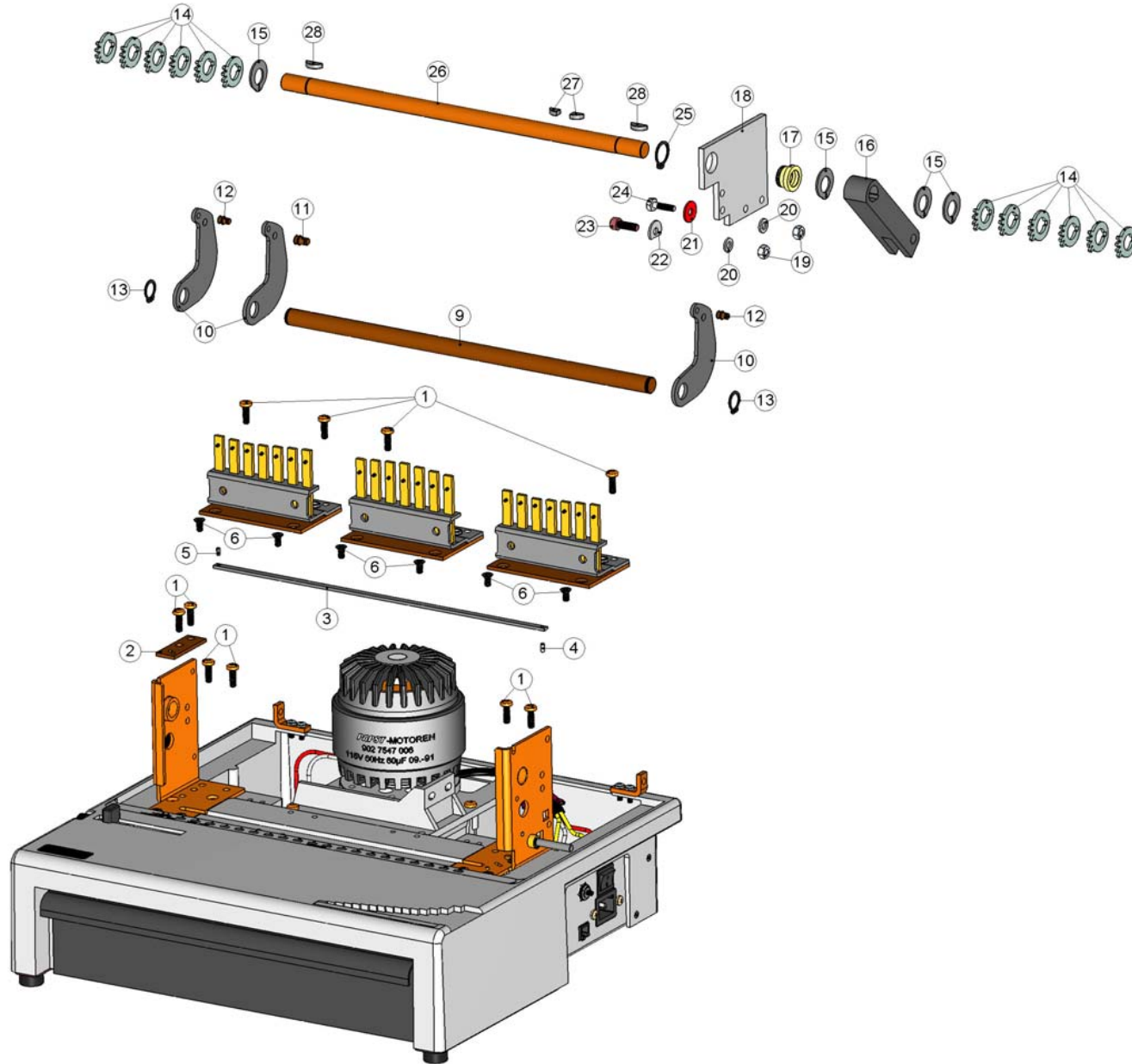
Page/of	Product	Serial No.	Date
8 / 23	GBC KM1000PB	REP0001-	May 2005

<b>Pos.</b>	<b>New Part No.</b>	<b>Old Part No.</b>	<b>Notes</b>	<b>Pre-Assemble Set</b>	<b>Description</b>
1	9-9002	----	DIN 912 8.8 / M5x10	----	Hex. socket h. cap screw
2	2-2208	----	----	1-1207.29	Rocker
3	2-2209	----	----	1-1207.29	Bolt
4	9-9623	----	DIN 6888 / 4x5x13	----	Woodruff key
5	9-9206	----	DIN 934 / M6	----	Hexagon thin nut 0,8D
6	2-2233	----	----	----	Eccentric bolt
7	2-2230	----	----	1-1228.29	Splineway
8	2-2229	----	----	1-1228.29	Stop arm
9	2-2231	----	----	1-1228.29	Axle
10	9-9510	----	DIN 6799	----	Retaining washer, loose 5
11	2-2232	----	----	----	Roll
12	9-9507	----	DIN 6799	----	Retaining washer, loose 2,3
13	2-3762	----	----	----	Receptacle flat with protection 6,3x0,8
14	2-3759	----	----	----	Receptacle flat with protection 4,8x0,8
15	2-2256	----	----	----	Guide for bolt
16	9-9501	----	DIN 471 A7	----	Retaining ring
17	2-2221	----	----	----	Clutch bolt
18	2-2243	----	----	----	Pressure spring
19	2-2276	----	----	----	Lifting magnet 115V ( 60Hz )
20	2-2284	----	----	----	Bolt 115 / 220 V
21	9-9030	----	DIN 7500 C / M3x8	----	Duo-Taptite-scr.w.ch. h.
22	9-9408	----	DIN 137 A / M3	----	Curved spring washer
23	9-9207	----	BN 201 / M3 H=0,9	----	Nut



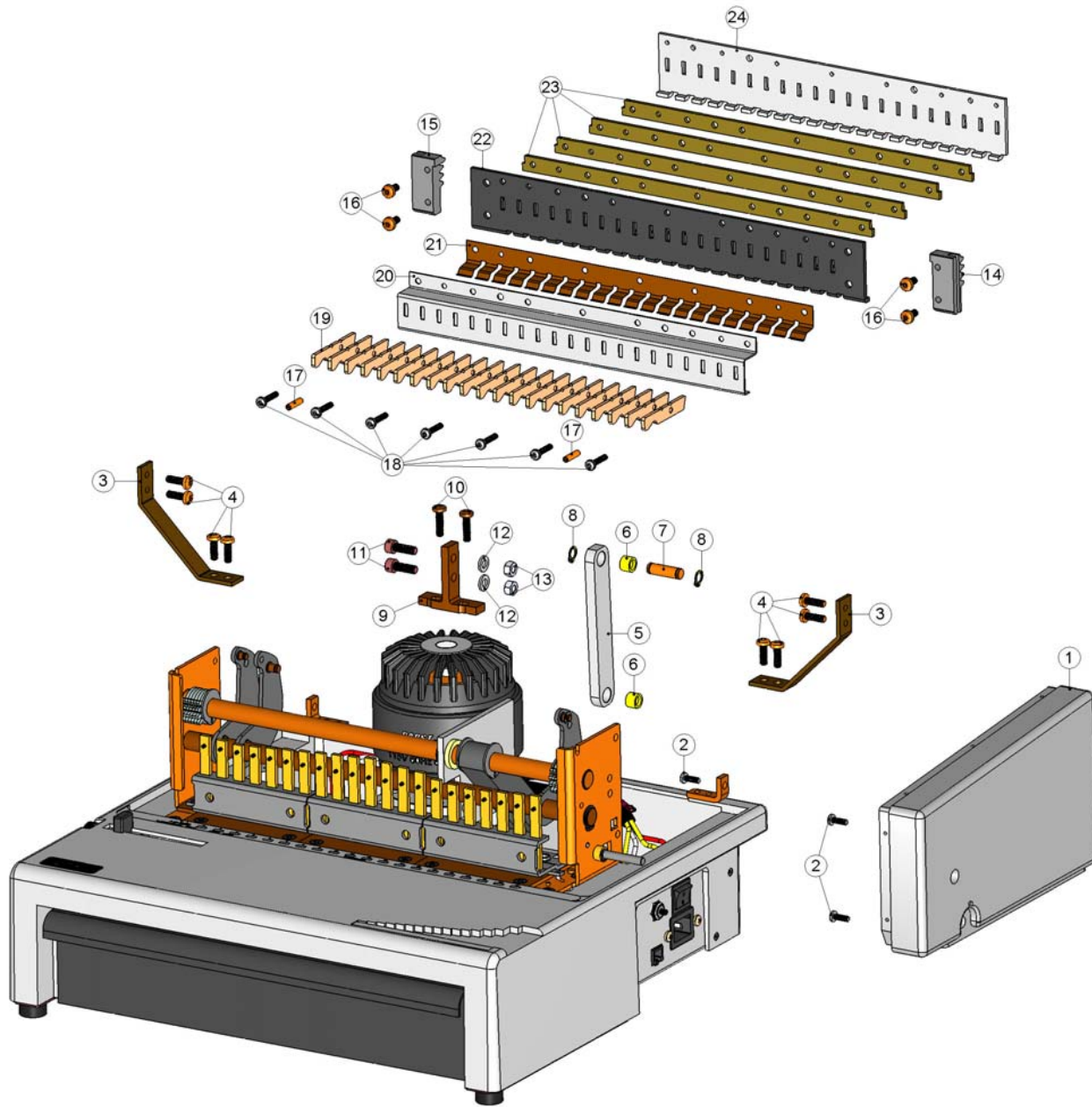
<b>Page/of</b>	<b>Product</b>	<b>Serial No.</b>	<b>Date</b>
10 / 23	GBC KM1000PB	REP0001-	May 2005

<b>Pos.</b>	<b>New Part No.</b>	<b>Old Part No.</b>	<b>Notes</b>	<b>Pre-Assemble Set</b>	<b>Description</b>
1	1-1284.90	----	----	----	Gear cpl., 115V
2	2-2255	----	----	----	Bracket
3	9-9123	----	DIN 7500 C / M5x16	----	Self drilling torx screw
4	9-9190	----	DIN 7500 C / M5x20	----	Self drilling torx screw
5	1-2297	----	----	----	Stranded cable cpl.
6	2-2631	----	----	----	Scale, EPK 21 USA
7	2-2092	----	----	----	Bearing bracket left ( EPK )
8	2-2093	----	----	----	Bearing bracket right ( EPK )
9	9-9007	----	DIN 7500 M / M5x10	----	Torx head screw
10	9-9500	----	DIN 471 A6	----	Retaining ring
11	2-2145	----	----	----	Bearing
12	2-2147	----	----	1-1149.29	Stop axle ( EP / EPK )
13	2-2148	----	----	1-1149.29	Stop wheel
14	2-2150	----	----	1-1149.29	Carrier bolt
15	2-2151	----	----	----	Paper stop slide
16	2-2155	----	----	----	Tension spring
17	2-2142	----	----	1-1141.90	Stop lever
18	2-2143	----	----	1-1141.90	Roll
19	2-2144	----	----	1-1141.90	Rivet roll
20	2-2123	----	----	----	Bolt
21	9-9059	----	DIN 7500 C / M4x12	----	Self drilling torx screw
22	2-2640	----	----	----	Bracket
23	2-2052	----	----	----	Logotype GBC
24	2-2238	----	----	----	Drawer ( EP / EPK )
25	2-2684	----	----	----	Capacitor 115V, 60 $\mu$ F
26	2-2254	----	----	----	Rubber plate



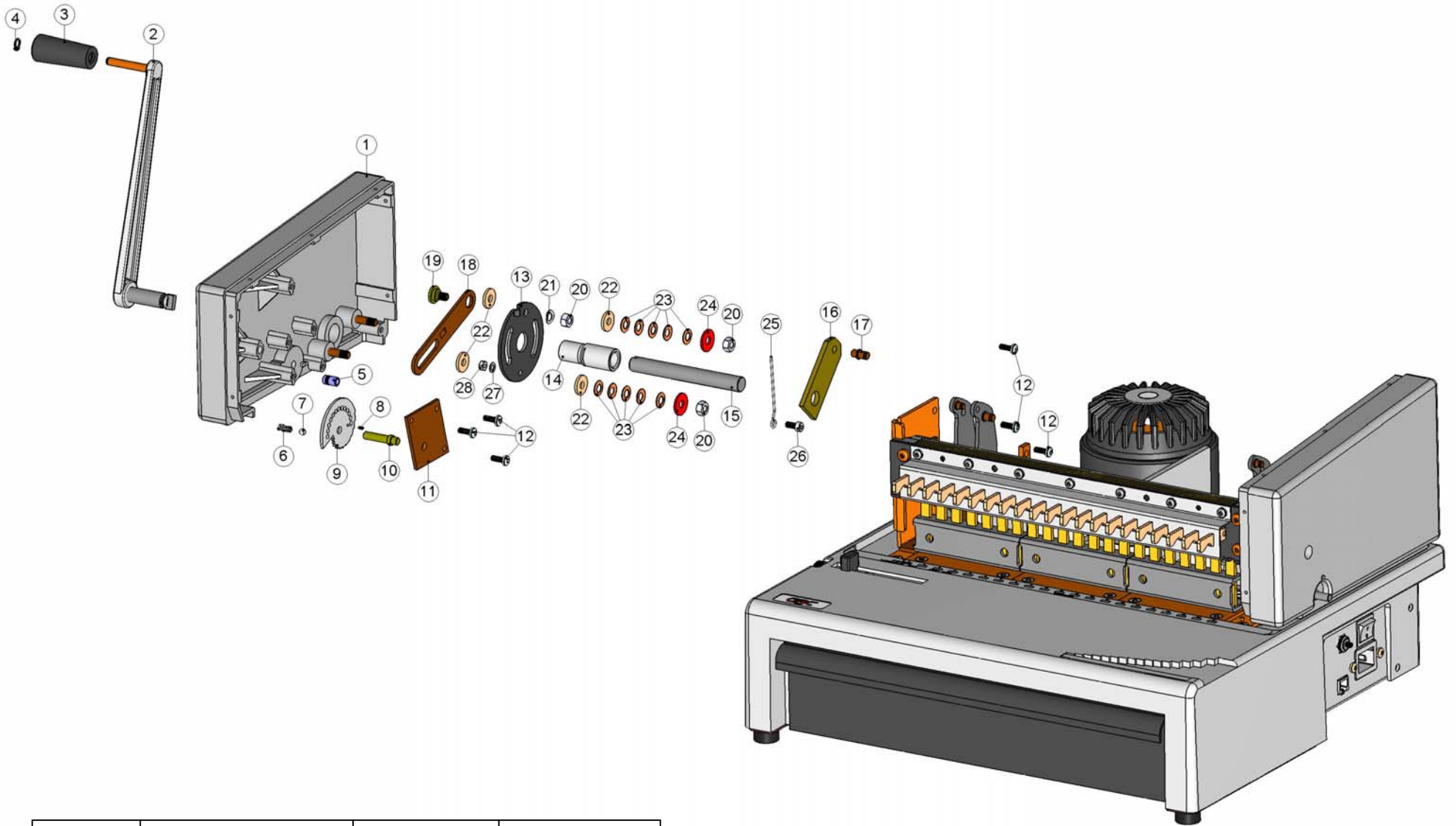
Page/of	Product	Serial No.	Date
12 / 23	GBC KM1000PB	REP0001-	May 2005

<b>Pos.</b>	<b>New Part No.</b>	<b>Old Part No.</b>	<b>Notes</b>	<b>Pre-Assemble Set</b>	<b>Description</b>
1	9-9123	----	DIN 7500 C / M5x16	----	Self drilling torx screw
2	2-2152	----	----	----	Paper stop guide
3	2-2153	----	----	1-1163.90	Paper stop rail 21
4	9-9605	----	DIN 6325 / 3x8	1-1163.90	Parallel pin
5	9-9604	----	DIN 1472 / 3x6	----	Parallel pin
6	9-9007	----	DIN 7500 M / M5x10	----	Torx head screw
7	1-1036	----	----	1-1032.90	Punching block cpl.,centre IB
8	1-1038	----	----	1-1032.90	Punching block cpl.,left ( EPK )
9	2-2604	----	----	1-1614.29	Axle
10	2-2618	----	----	1-1614.29	Arm
11	2-2621	----	----	1-1614.29	Carrier bolt
12	2-3727	----	----	1-1614.29	Carrier bolt ( E-Kombo )
13	9-9504	----	DIN 471 / A14	----	Retaining ring
14	2-2166	----	----	----	Tooth segment
15	9-9515	----	BN 832 / G14	----	Grip-ring SP 220
16	2-2213	----	----	----	Lever
17	2-2227	----	----	----	Bearing bush
18	2-2224	----	----	----	Bearing plate
19	9-9206	----	DIN 934 / M6	----	Hexagon thin nut 0,8D
20	9-9412	----	DIN 127/ M6	----	Spring lock washer
21	9-9303	----	DIN 9021 A / M4	----	Washer
22	2-2252	----	M6	----	Washer spec.
23	9-9012	----	DIN 912 12.9 / M6x18	----	Hex. socket h. cap screw
24	9-9066	----	DIN 933 / M6x20	----	Hexagon screw
25	9-9505	----	DIN 471 / A18	----	Retaining ring
26	2-2223	----	----	----	Axle ( EP / EPK )
27	2-2291	----	----	----	Wedge
28	9-9624	----	DIN 6888 / 4x6.5x16	----	Woodruff key



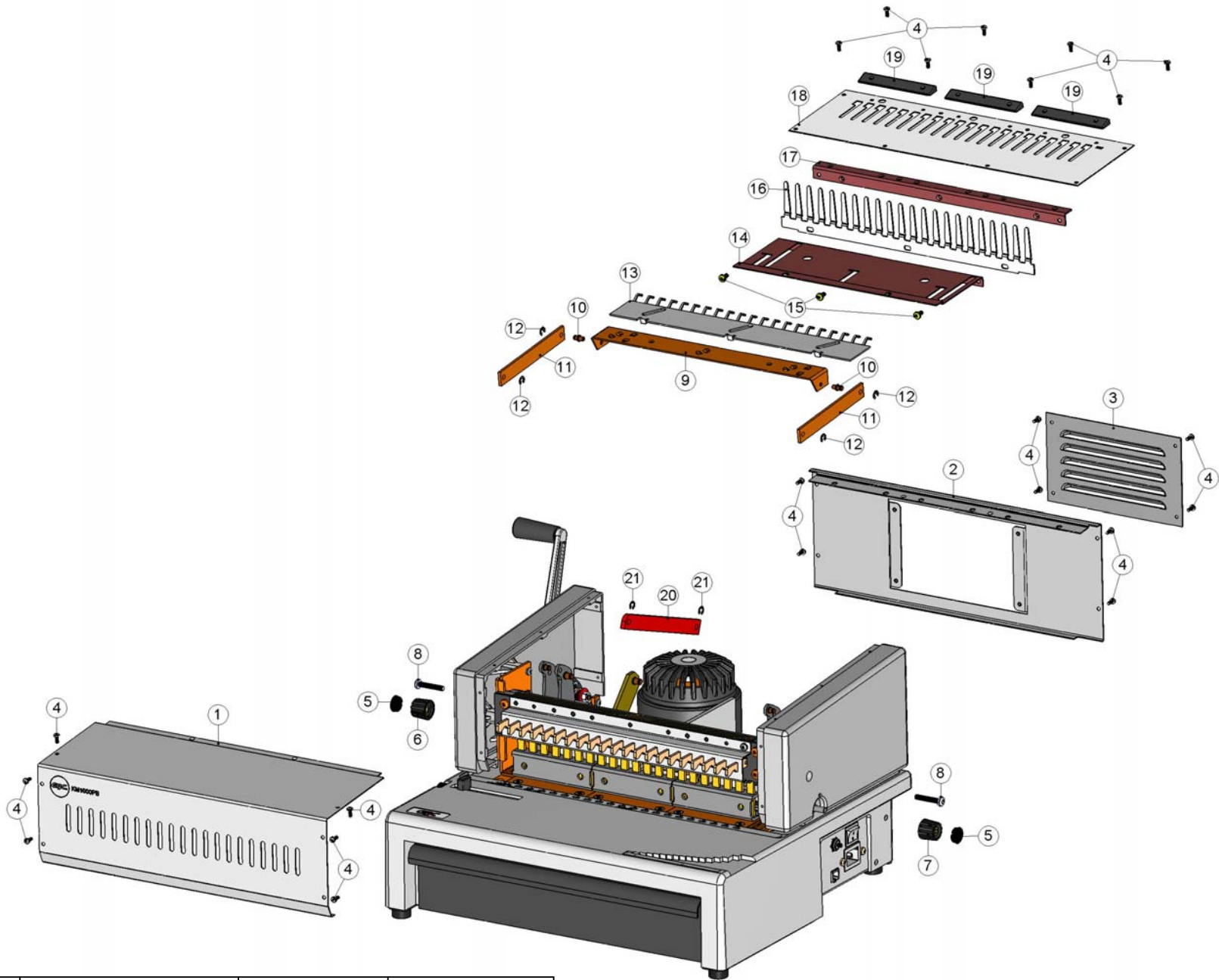
<i>Page/of</i>	<i>Product</i>	<i>Serial No.</i>	<i>Date</i>
14 / 23	GBC KM1000PB	REP0001-	May 2005

<b>Pos.</b>	<b>New Part No.</b>	<b>Old Part No.</b>	<b>Notes</b>	<b>Pre-Assemble Set</b>	<b>Description</b>
1	2-2606.43	----	----	----	Cover right
2	9-9059	----	DIN 7500 C / M4x12	----	Self drilling torx screw
3	2-2154	----	----	----	Support
4	9-9123	----	DIN 7500 C / M5x16	----	Self drilling torx screw
5	2-2211	----	----	1-1210.90	Joint arm
6	2-2212	----	----	1-1210.90	Bearing bush
7	2-2234	----	----	----	Axle
8	9-9502	----	DIN 471 / A8	----	Retaining ring
9	2-2226	----	----	----	T-fastening ( EP / EPK )
10	9-9190	----	DIN 7500 C / M5x20	----	Self drilling torx screw
11	9-9012	----	DIN 912 12.9 / M6x18	----	Hex. socket h. cap screw
12	9-9412	----	DIN 127/ M6	----	Spring lock washer
13	9-9206	----	DIN 934 / M6	----	Hexagon thin nut 0,8D
14	2-2654	----	----	----	Toothed rack right ( EP / EPK )
15	2-2655	----	----	----	Toothed rack left ( EP / EPK )
16	9-9127	----	DIN 7500 C / M5x10	----	Self drilling torx screw
17	9-9619	----	DIN 1481 / 4x18	----	Slotted spring pin, heavy
18	9-9065	----	DIN 7500 C / M4x20	----	Self drilling torx screw
19	2-2133	----	----	----	Slide
20	2-2130	----	----	----	Guide
21	2-2132	----	----	----	Spring
22	2-2128	----	----	----	Bracket front ( PB-21 )
23	2-2131	----	----	----	Distance plate
24	2-2129	----	----	----	Bracket back ( PB-21 )



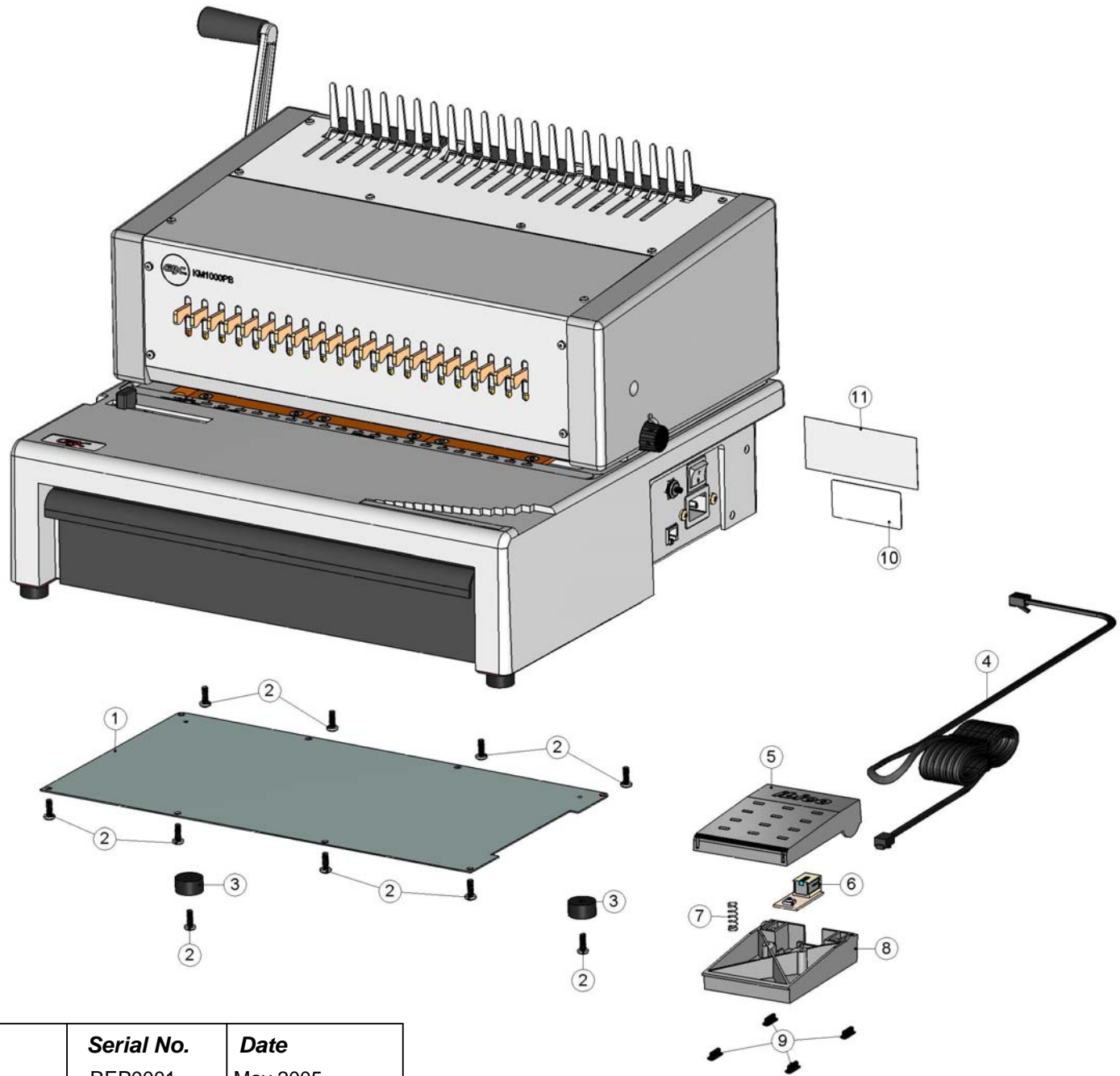
Page/of	Product	Serial No.	Date
16 / 23	GBC KM1000PB	REP0001-	May 2005

<b>Pos.</b>	<b>New Part No.</b>	<b>Old Part No.</b>	<b>Notes</b>	<b>Pre-Assemble Set</b>	<b>Description</b>
1	2-2605.43	----	----	----	Cover, left
2	2-2611	----	----	----	Hand lever ( EPK )
3	2-2643	----	----	----	Handle
4	9-9500	----	DIN 471 A6	----	Retaining ring
5	2-2608	----	----	----	Tube
6	2-2610	----	----	----	Knob cover
7	9-9702	----	DIN 5401	----	Ball 5
8	9-9611	----	DIN 7343 / 2x4	----	Spiral pin
9	2-2645	----	----	1-1644.29	Stop wheel
10	2-2646	----	----	1-1644.29	Stop axle ( EPK )
11	2-2642	----	----	----	Plate
12	9-9059	----	DIN 7500 C / M4x12	----	Self drilling torx screw
13	2-2634	----	----	1-1632.29	Disc
14	2-2635	----	----	1-1632.29	Splineway
15	2-2632	----	----	1-1632.29	Driving axle
16	2-2624	----	----	1-1632.29	Clip
17	2-2621	----	----	1-1632.29	Carrier bolt
18	2-2629	----	----	----	Stop lever
19	2-2630	----	----	----	Eccentric screw
20	9-9206	----	DIN 934 / M6	----	Hexagon thin nut 0,8D
21	9-9411	----	DIN 137 A / M6	----	Curved spring washer
22	2-2626	----	----	----	Washer
23	9-9405	----	DIN 2093 B/12.5x6.2x0.5	----	Disc spring, soft
24	9-9303	----	DIN 9021 A / M4	----	Washer
25	2-2651	----	----	----	Looped spring
26	9-9000	----	DIN 912 8.8 / M4x10	----	Hex. socket h. cap screw
27	9-9301	----	DIN 433 / M4	----	Washer
28	9-9204	----	DIN 934 / M4	----	Hexagon thin nut 0,8 D



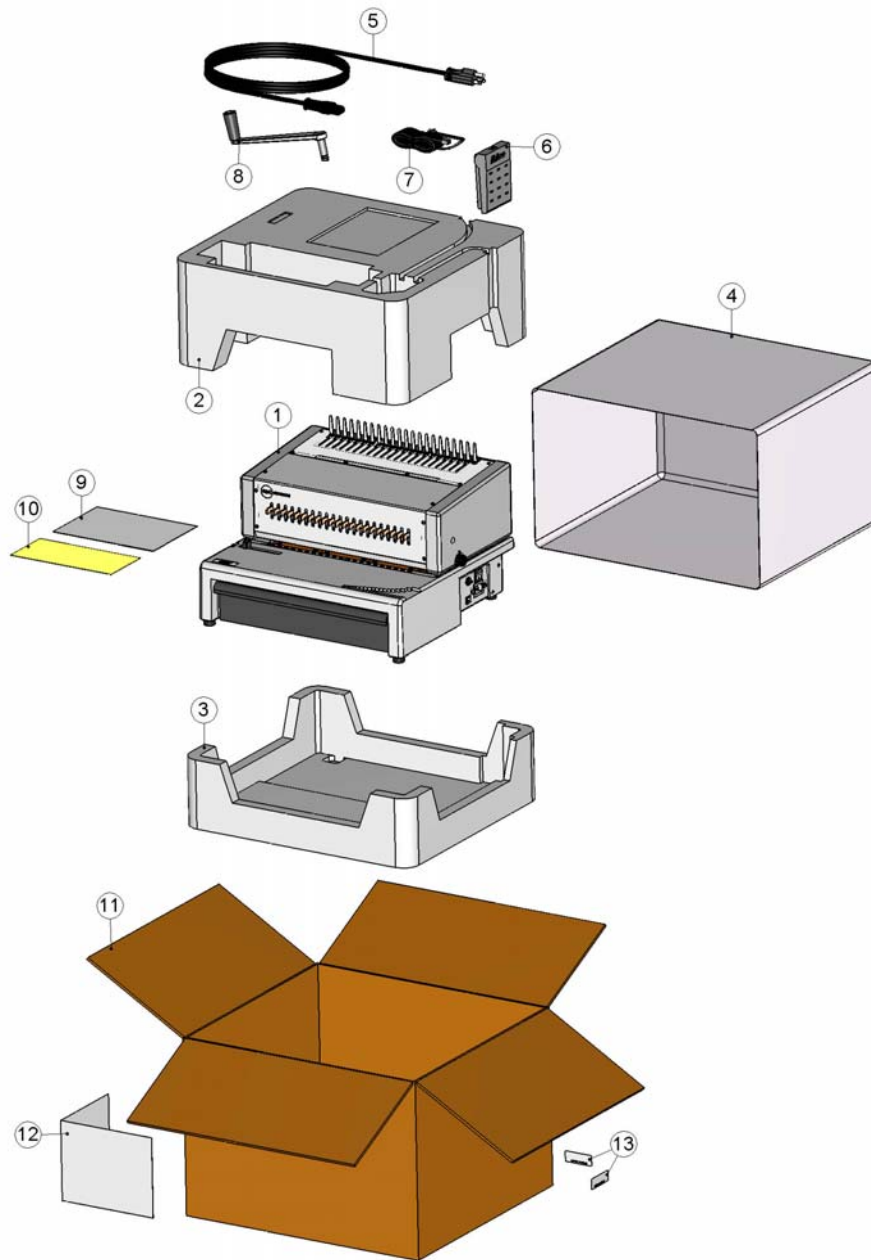
Page/of	Product	Serial No.	Date
18 / 23	GBC KM1000PB	REP0001-	May 2005

<b>Pos.</b>	<b>New Part No.</b>	<b>Old Part No.</b>	<b>Notes</b>	<b>Pre-Assemble Set</b>	<b>Description</b>
1	2-2668.70	----	----	----	Front cover GBC KM1000PB
2	2-2648.44	----	----	----	Back cover
3	2-2239.44	----	----	----	Cover for hood ( EP / EPK )
4	9-9030	----	DIN 7500 C / M3x8	----	Duo-Taptite-scr.w.ch. h.
5	2-2261	----	----	----	Knob cover
6	2-2345	----	----	----	Control knob
7	2-2260	----	----	----	Knob
8	9-9006	----	DIN 912 8.8 / M5x35	----	Hex. socket h. cap screw
9	2-2304	----	----	1-1622.29	Carrier 21
10	2-2620	----	----	1-1622.29	Carrier bolt
11	2-2628	----	----	----	Bar, top
12	9-9509	----	DIN 6799	----	Retaining washer, loose 4
13	2-2303	----	----	----	Slide 21
14	2-2302	----	----	----	Guide plate
15	9-9058	----	DIN 7500 C / M4x8	----	Self drilling torx screw
16	2-2310	----	----	----	Comb 21
17	2-2311	----	----	----	Bracket
18	2-2301	----	----	----	Cover plate
19	2-2334	----	----	----	Wedge
20	2-2627	----	----	----	Bar, bottom
21	9-9510	----	DIN 6799	----	Retaining washer, loose 5



Page/of	Product	Serial No.	Date
20 / 23	GBC KM1000PB	REP0001-	May 2005

<b>Pos.</b>	<b>New Part No.</b>	<b>Old Part No.</b>	<b>Notes</b>	<b>Pre-Assemble Set</b>	<b>Description</b>
1	2-2240	----	----	----	Bottom plate
2	9-9059	----	DIN 7500 C / M4x12	----	Self drilling torx screw
3	2-2271	----	----	----	Rubber foot ( EPK )
4	2-5682	----	----	----	Connecting cable
5	2-5648	----	----	----	Footswitch hous.top E-version
6	2-5685	----	----	----	Electr. board f. footswitch
7	2-5652	----	----	----	Pressure spring D-065
8	2-5647	----	----	----	Footswitch hous.bott. E-version
9	2-4202	----	----	----	Rubber foot
10	2-5668	----	----	----	Type Label GBC KM1000PB
11	2-5653	----	----	----	Label "WARNING", USA



<b>Page/of</b>	<b>Product</b>	<b>Serial No.</b>	<b>Date</b>
22 / 23	GBC KM1000PB	REP0001-	May 2005

<b>Pos.</b>	<b>New Part No.</b>	<b>Old Part No.</b>	<b>Notes</b>	<b>Pre-Assemble Set</b>	<b>Description</b>
1	7707330	----	----	----	GBC KM1000PB
2	8-8021	----	----	----	Pair side padding EPK / botton
3	8-8021	----	----	----	Pair side padding EPK / top
4	2-8034	----	----	----	Dust bag
5	2-4048	----	----	----	Power cord USA
6	1-5647	----	----	----	Footswitch cpl. IbiMaster
7	2-5682	----	----	----	Connecting cable
8	1-1613	----	----	----	Hand lever cpl., grey ( EPK )
9	8-3604	----	----	----	Instr. manual GBC KM1000PB
10	8-8155	----	----	----	Packing sheet caution
11	8-8089	----	----	----	Carton brown ( EPK )
12	8-8020	----	----	----	Label GBC KM1000PB
13	8-3611	----	----	----	Self a.label/UPC GBC KM1000PB