



FALCON 36 SAE Parts List

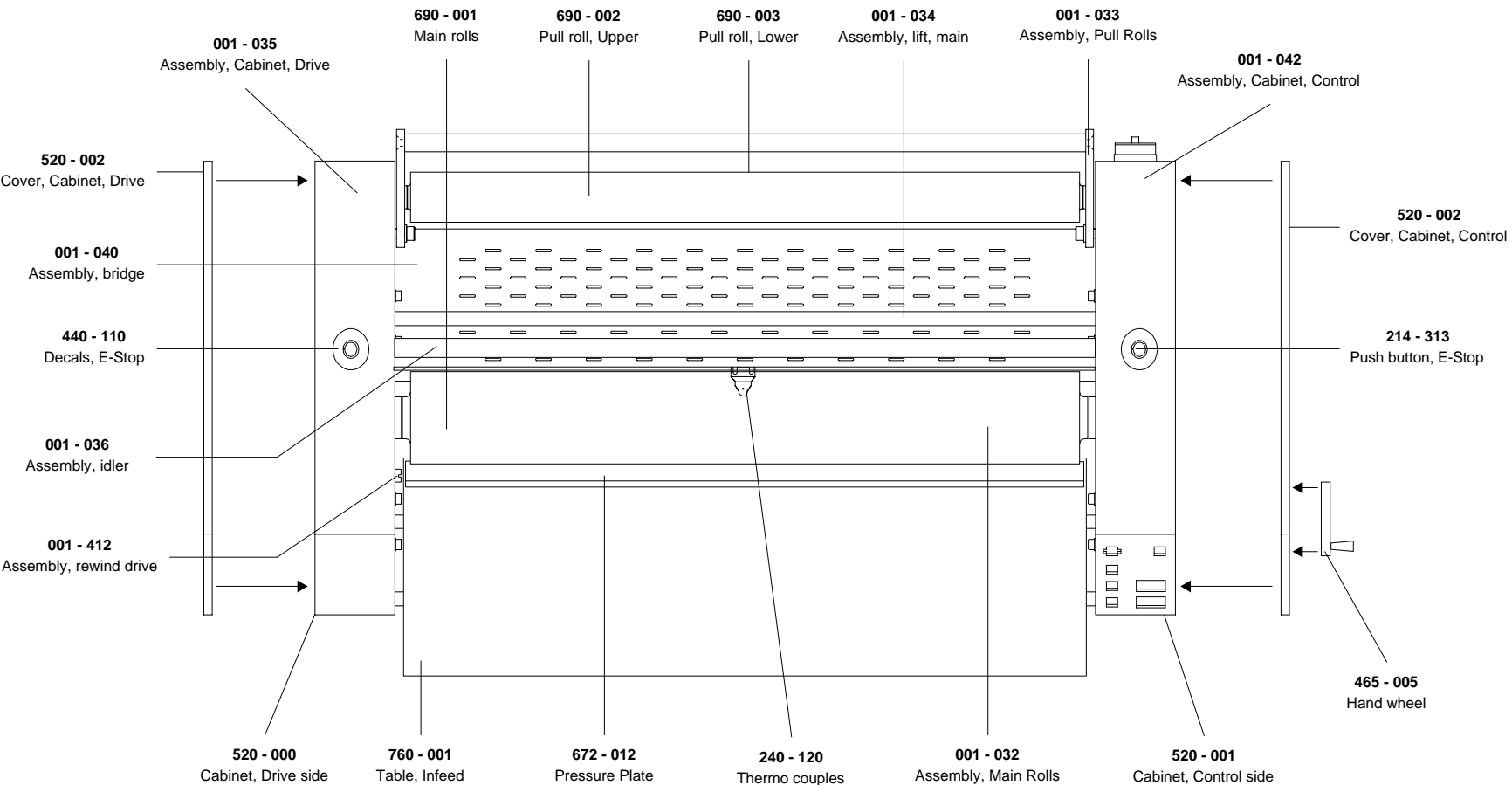
GBC IS AN ACCO BRANDS COMPANY



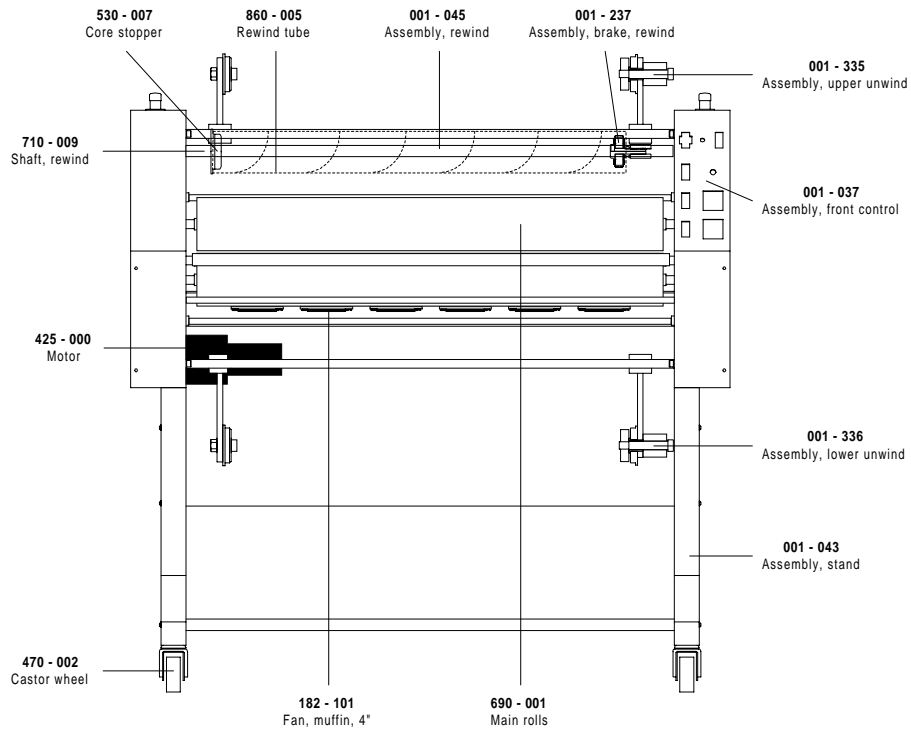
Falcon 36 SAE
Illustrated Parts Booklet
(000 - 002)

Available Options ;

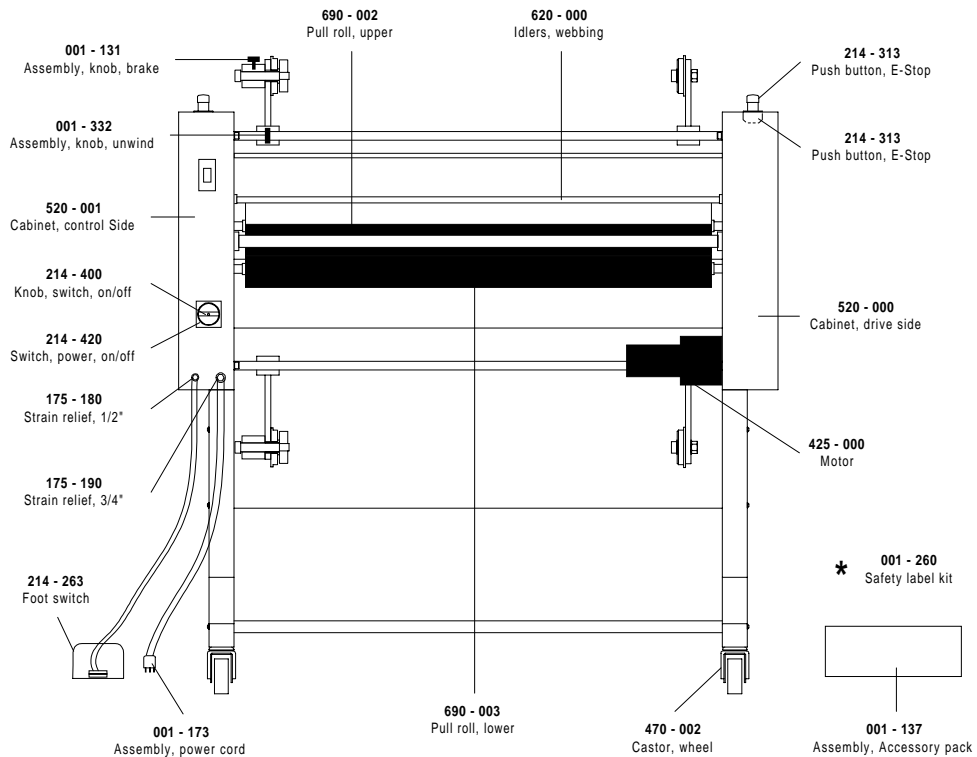
- 001 - 067 (Vacuum Table)*
- 001 - 321 (Paper Unwind)*
- 001 - 177 (Product Rewind)*
- 001 - 044 (Outfeed Slitters)*
- 001 - 174 (Outfeed Table)*
- 001 - 526 (39" Nip Height Castors)*

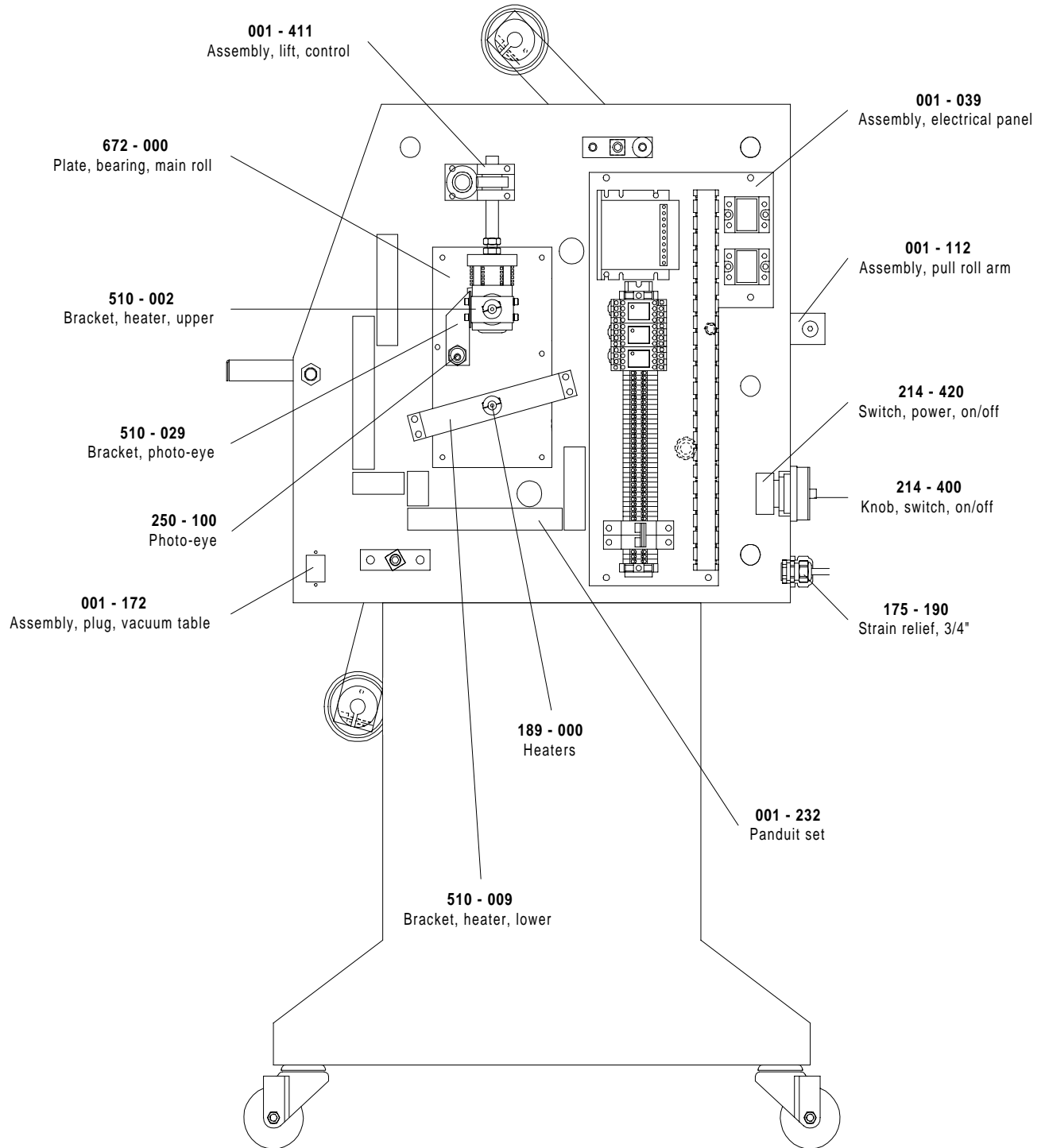


Front View

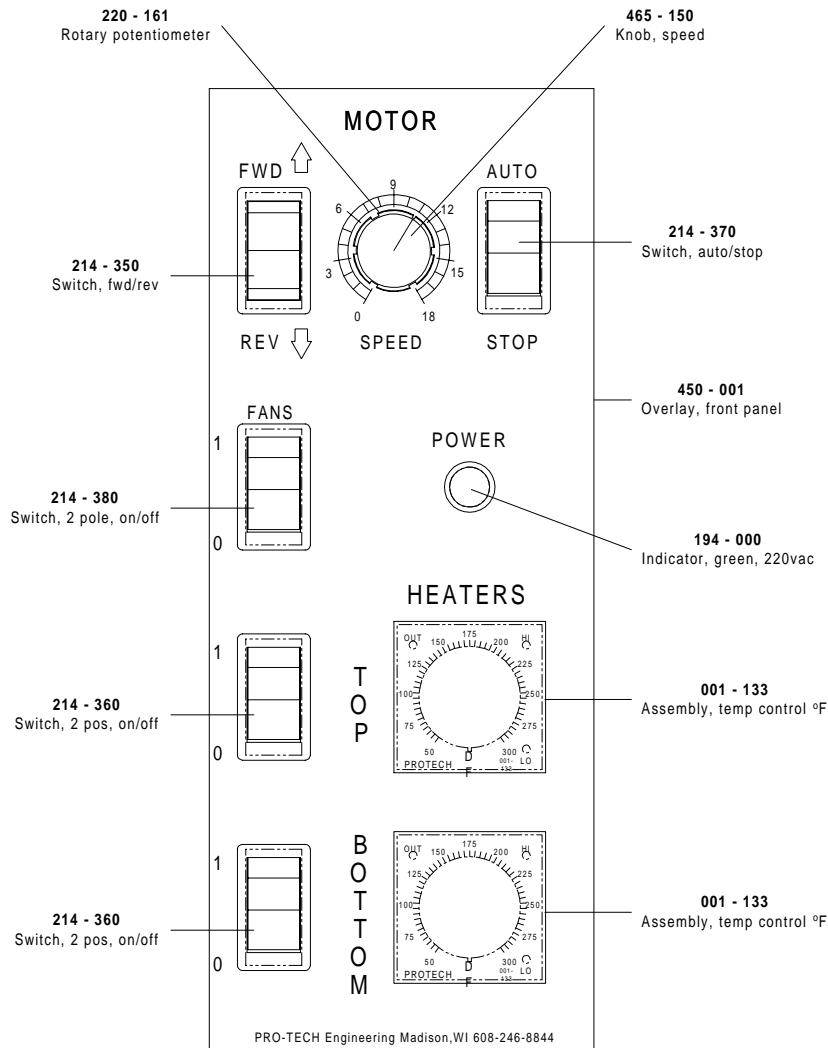


Rear View

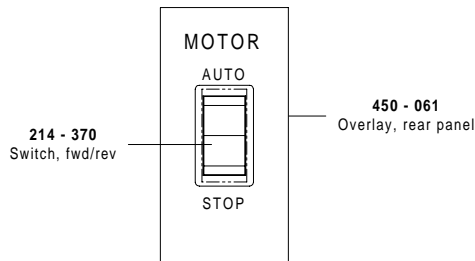




Front Control Panel

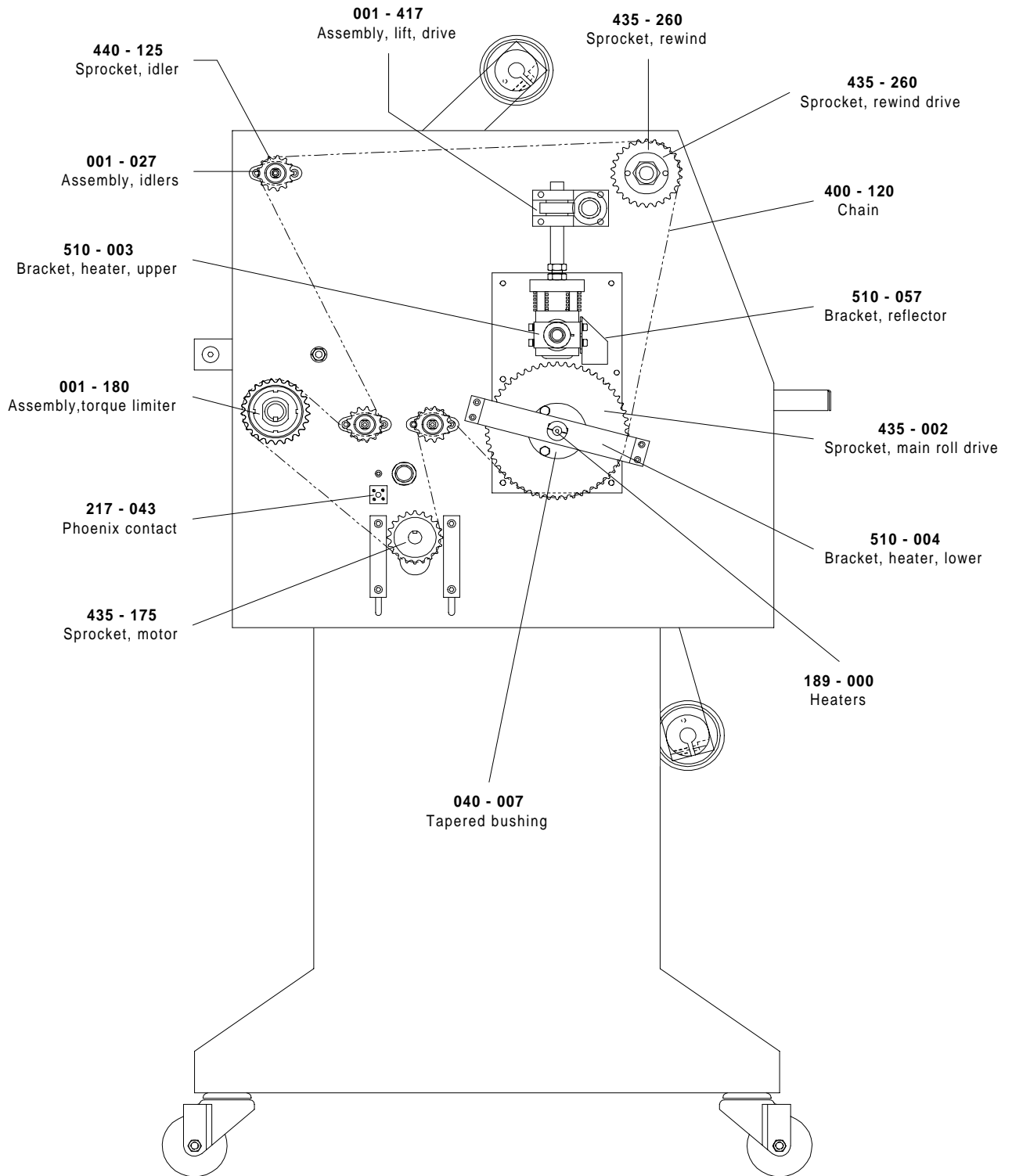


Rear Control Panel

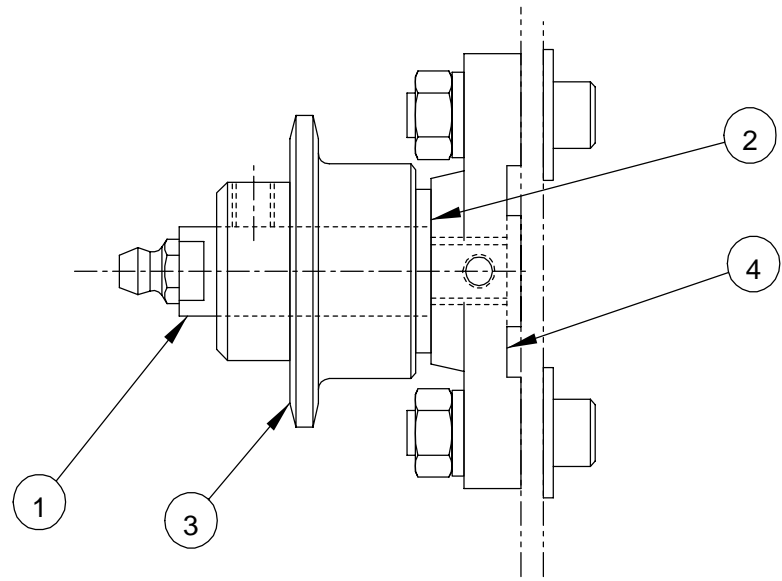
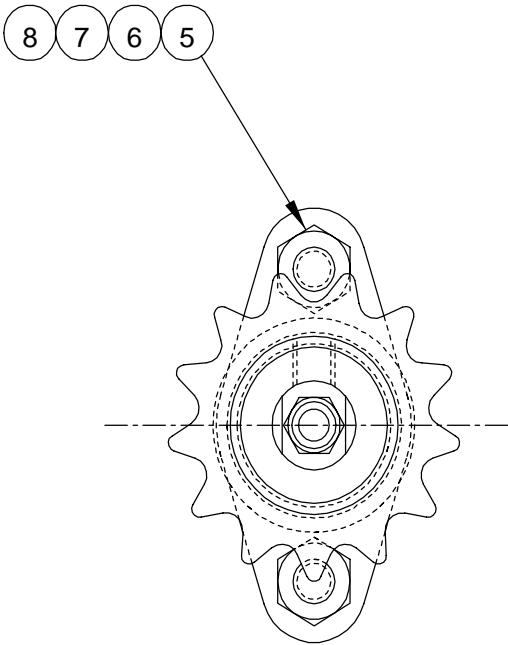


REQ'D	DESCRIPTION	PART NO.	ITEM
1	PNL.ELEC	670-000	1
1	CNTRL_MTR /KBLC-240DS	220-160	2
1	BRD.BARR /KBIC-9884	220-110	3
1	REST.1/8 /KBIC-9890	220-130	4
1	TB.END /SS-221-01	217-170	5
26	TB.40A.GRAY /VU4-4	217-120	6
7	TB.40A.BLUE /VU4-4	217-270	7
3	BASE.RLY.14PIN /PY14A-E	207-110	8
3	RLY.14 PIN /MY4N/240	207-125	9
1	DIN RAIL, 14"	217-205	10
2	RLY.SST.40A.240V /A2440	207-150	11
2	BHCS.10-32 X .38	-	12
4	SHCS.8-32 X .38	-	13
4	SHCS.10-32 X .5	-	14
4	WASHLOCK.10	-	15
6	BAR_JMP /SS-205-01	217-190	16
NUMBERS			
6	CVR.BAR_JMP.V4/V5	217-180	18
1	FUSE.2.5 /	-	19
1	FUSE	-	20
1	CB.PWR /S272K32	186-510	21
1	DUCT WITH COVER, 18"	180-155	22
1	TB.40A.GRN /VUPE 4-4	217-140	23
1	GROMMET.RUBBER.31	175-000	24

2577	0715	0483	SHEET 1 OF 1	
UNLESS OTHERWISE SPECIFIED			FINISH	
DIM (IN)	TOL	P-1	BE	1/8"
X		P	1/16"	
X		P	1/32"	
X		P	1/64"	
X		P	1/128"	
X		P	1/256"	
X		P	1/512"	
X		P	1/1024"	
X		P	1/2048"	
X		P	1/4096"	
X		P	1/8192"	
X		P	1/16384"	
X		P	1/32768"	
X		P	1/65536"	
X		P	1/131072"	
X		P	1/262144"	
X		P	1/524288"	
X		P	1/1048576"	
X		P	1/2097152"	
X		P	1/4194304"	
X		P	1/8388608"	
X		P	1/16777216"	
X		P	1/33554432"	
X		P	1/67108864"	
X		P	1/134217728"	
X		P	1/268435456"	
X		P	1/536870912"	
X		P	1/1073741824"	
X		P	1/2147483648"	
X		P	1/4294967296"	
X		P	1/8589934592"	
X		P	1/17179869184"	
X		P	1/34359738368"	
X		P	1/68719476736"	
X		P	1/137438953472"	
X		P	1/274877906944"	
X		P	1/549755813888"	
X		P	1/1099511627776"	
X		P	1/2199023255552"	
X		P	1/4398046511104"	
X		P	1/8796093022208"	
X		P	1/1759218044416"	
X		P	1/3518436088832"	
X		P	1/7036872177664"	
X		P	1/14073744355328"	
X		P	1/28147488710656"	
X		P	1/56294977421312"	
X		P	1/112589954842624"	
X		P	1/225179909685248"	
X		P	1/450359819370496"	
X		P	1/900719638740992"	
X		P	1/1801439277481984"	
X		P	1/3602878554963968"	
X		P	1/7205757109927936"	
X		P	1/14411514219855872"	
X		P	1/28823028439711744"	
X		P	1/57646056879423488"	
X		P	1/115292113758846976"	
X		P	1/230584227517693952"	
X		P	1/461168455035387904"	
X		P	1/922336910070775808"	
X		P	1/1844673820341551616"	
X		P	1/3689347640683103232"	
X		P	1/7378695281366206464"	
X		P	1/1475739056732412928"	
X		P	1/2951478113464825856"	
X		P	1/5902956226929651712"	
X		P	1/11805912453859303424"	
X		P	1/23611824907718606848"	
X		P	1/47223649815437213696"	
X		P	1/94447299630874427392"	
X		P	1/188894593261748844784"	
X		P	1/377789186523497689568"	
X		P	1/755578373046995379136"	
X		P	1/151115674609391078272"	
X		P	1/302231349218782156544"	
X		P	1/604462698437564313088"	
X		P	1/1208925396875128262144"	
X		P	1/2417850793750256524288"	
X		P	1/4835701587500513048576"	
X		P	1/9671403175001026097152"	
X		P	1/19342806350020521194304"	
X		P	1/38685612700041042388608"	
X		P	1/77371225400082084777216"	
X		P	1/154742450800164169544432"	
X		P	1/309484901600328339088864"	
X		P	1/618969803200656678177728"	
X		P	1/1237939606400131357355552"	
X		P	1/24758792128002627147111104"	
X		P	1/49517584256005254294222208"	
X		P	1/990351685120010508588444416"	
X		P	1/1980703370240210171777788832"	
X		P	1/3961406740480420343555577664"	
X		P	1/79228134809608406871111155328"	
X		P	1/15845626961921681374222230656"	
X		P	1/31691253923843362748444461312"	
X		P	1/63382507847686725496888922624"	
X		P	1/12676501569537450993777844512"	
X		P	1/25353003139074901987555689024"	
X		P	1/50706006278149803975111378048"	
X		P	1/10141201256499607950222756096"	
X		P	1/20282402512999315900445512192"	
X		P	1/40564805025998631800891024384"	
X		P	1/81129610051997263601782048768"	
X		P	1/162259220103944527203564175552"	
X		P	1/324518440207889054407128351104"	
X		P	1/649036880415778108815267022208"	
X		P	1/1298073680831556217630534044416"	
X		P	1/2596147361663112435260668088832"	
X		P	1/51922947233262248705213361777664"	
X		P	1/1038458946653244974104267355552"	
X		P	1/20769178933064899482085347111104"	
X		P	1/41538357866129798964170684222208"	
X		P	1/830767157322595979283413684444416"	
X		P	1/166153435464591958566827268888922624"	
X		P	1/332306870929183917133736537777664"	
X		P	1/66461374185836783426747307555552"	
X		P	1/132922748371673568853494615111104"	
X		P	1/26584549674334713770689932222208"	
X		P	1/531690993486694275413791844444416"	
X		P	1/106338198697338855082779768888922624"	
X		P	1/212676397394677710165559537777664"	
X		P	1/42535279478935542033111907555552"	
X		P	1/85070558957871084066223815111104"	
X		P	1/170141117915742168132442630222208"	
X		P	1/3402822358314843362648492604444416"	
X		P	1/6805644716629686725296985208888922624"	
X		P	1/1361128943251937350593970417777664"	
X		P	1/272225788650387470118794083555552"	
X		P	1/54445157730077494023758817111104"	
X		P	1/108890315460154988047517634222208"	
X		P	1/2177806309203099760950352684444416"	
X		P	1/4355612618406199521900705368888922624"	
X		P	1/8711225236812399043801410737777664"	
X		P	1/174224507366247980876028215111104"	
X		P	1/348449014732495961752056430222208"	
X		P	1/6968980294649919235041128604444416"	
X		P	1/1393796058929938467008257208888922624"	
X		P	1/2787592117859876934017144417777664"	
X		P	1/55751842357197538680342883555552"	
X		P	1/111503684743595073760685667111104"	
X		P	1/22300736948719014752137133222208"	
X		P	1/446014738974380295042642644444416"	
X		P	1/89202947794876059008528528888922624"	
X		P	1/1784058955977521180165571564444416"	
X		P	1/356811791195504236033114288888922624"	
X		P	1/71362358239100847206622857777664"	
X		P	1/1427247164820116941332557555552"	
X		P	1/2854494329640233882665115111104"	
X		P	1/570898865928046776533022222208"	
X		P	1/1141797731856093533066444444416"	
X		P	1/2283595463712187066133288888922624"	
X		P	1/4567190927424374132266577777664"	
X		P	1/913438185484874826453315555552"	
X		P	1/1826876709769749528906631111104"	
X		P	1/3653753419539499057813262222208"	
X		P	1/730750683907899811562642444444416"	
X		P	1/14615013678157996232512848888922624"	
X		P	1/29230027356315992465025697777664"	
X		P	1/5846005471263198493005139555552"	
X		P	1/1169201094252639696001027111104"	
X		P	1/2338402188505279392002054222208"	
X		P	1/467680437701055878400410844444416"	
X		P	1/93536087540211175680082168888922624"	
X		P	1/187072175080423511376001637777664"	
X		P	1/37414435016084702275200327555552"	
X		P	1/74828870032169404550400655111104"	
X		P	1/14965774006433880910081311222208"	
X		P	1/299315480128677618201626244444416"	
X		P	1/59863096025735523640325248888922624"	
X		P	1/11972619205147047280650497777664"	
X		P	1/2394523841029409456130099555552"	
X		P	1/4789047682058818912260199111104"	
X		P	1/9578095364117637824520398222208"	
X		P	1/191561907222352756490407964444416"	
X		P	1/3831238144447055129808159528888922624"	
X		P	1/7662476288894110259617119057777664"	
X		P	1/153249525777822205192342391555552"	
X		P	1/306499051555644410394684783111104"	
X		P	1/612998103111288820789369566222208"	
X		P	1/1225996206225776415787391334444416"	
X		P	1/2451992412451552831157478266888922624"	
X		P	1/4903984824903105662314949537777664"	
X		P	1/9807969649806211	



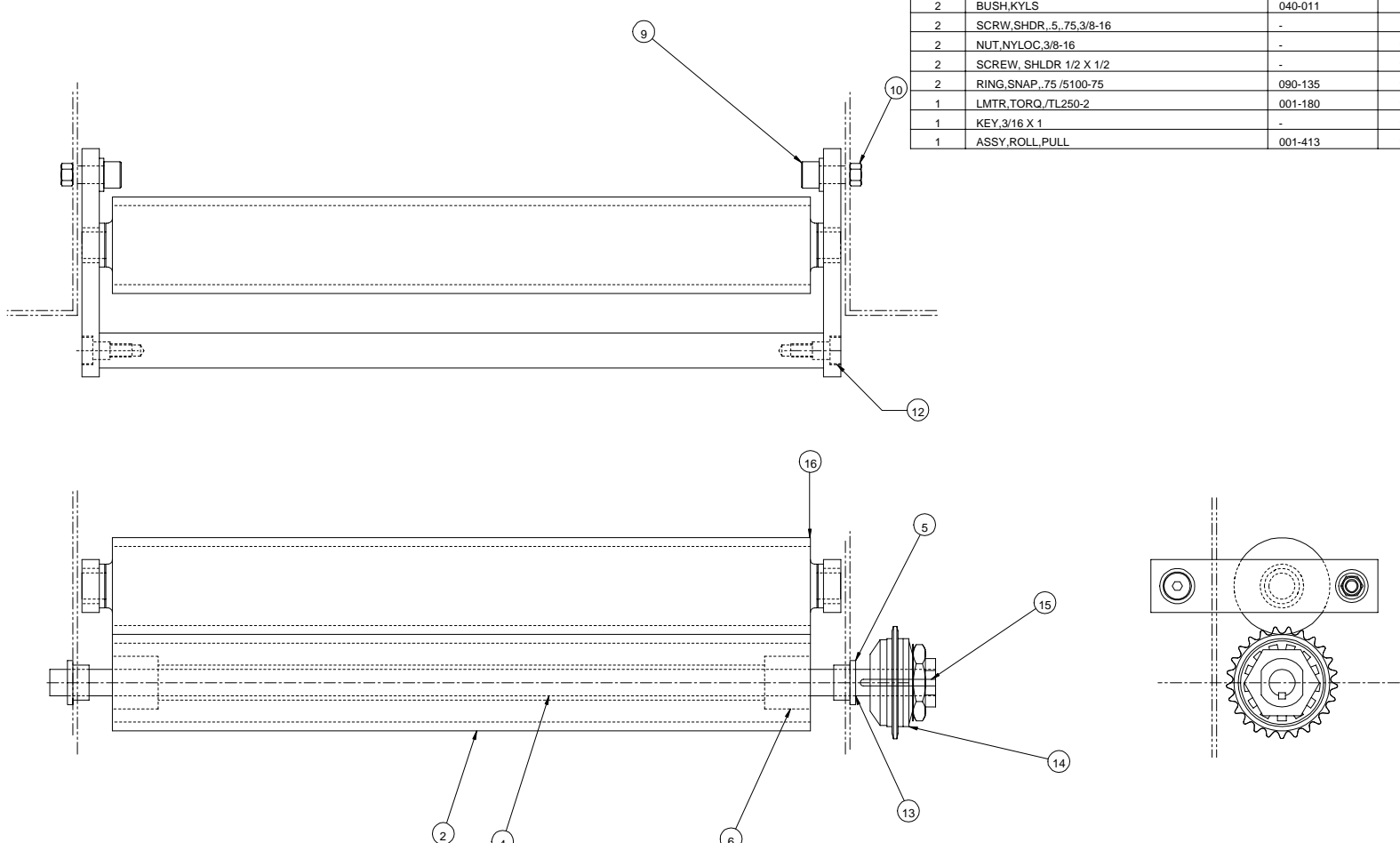
REQ'D	DESCRIPTION	PART NO.	ITEM
1	SHFT,IDL,.5 /S01	440-110	1
1	WASH,THRST,.5,.06 /TRB-815	032-140	2
1	SPRKT,35,13T,.5 /35BS13F	440-125	3
1	BASE,IDL,3/8-16 /GS	440-135	4
2	SHCS,1/4-20 X .875	-	5
2	WASH,FLAT,1/4	-	6
2	WASH,LOCK,1/4	-	7
2	NUT,HEX,1/4-20	-	8



This print is the property of PRO-TECH ENGR. The information thereon is remitted in confidence.									
UNLESS OTHERWISE SPECIFIED TOLERANCE				Pro-Tech Engineering 2117 N. Stoughton Rd. Madison, Wisconsin 53704 Phone (608) 246-8844 Fax (608) 246-8645					
DIM. AS SHOWN		TOL		FINISH TO BE		TITLE			
X/	P 1/	.04		125√		ASSY, SPRKT, IDL, 13T, BASE			
X	P	.050				PTN-36			
X	P					DATE: 8-6-93			
X	.020			ANGLES P 1D		DRAWN BY: RAS		DWG SCALE: A1	
X.X	P							Dwg: 001-027	
X	.010								
X,XX	P								
X	.005								
REVISION		0794		A					

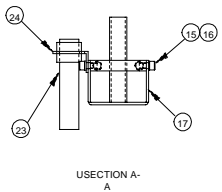
REQ'D	DESCRIPTION	PART NO.	ITEM
1	ROLL,PULL,LWR,2.5X42	690-003	2
1	SHFT,ROLL,PULL,LWR,.75,47.38	710-003	4
2	BUSH,BRNZ,FLNG,.75,1.62 /FB1216-5	040-008	5
2	BUSH,KYLS	040-011	6
2	SCRW,SHDR,.5,.75,3/8-16	-	9
2	NUT,NYLOC,3/8-16	-	10
2	SCREW,SHLDR 1/2 X 1/2	-	12
2	RING,SNAP,.75 /S100-75	090-135	13
1	LMTR,TORQ,TL250-2	001-180	14
1	KEY,3/16 X 1	-	15
1	ASSY,ROLL,PULL	001-413	16

PROPRIETARY
 GBC PRO-TECH CLAIMS PROPRIETARY RIGHTS TO THE MATERIAL DISCLOSED ON THIS DRAWING. IT IS ISSUED IN CONFIDENCE FOR ENGINEERING INFORMATION ONLY AND SHALL NOT BE REPRODUCED, COPIED OR DISCLOSED IN WHOLE OR IN PART, OR USED FOR MANUFACTURE OR FOR ANY OTHER PURPOSE WITHOUT WRITTEN PERMISSION FROM GBC PRO-TECH

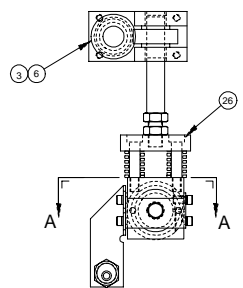
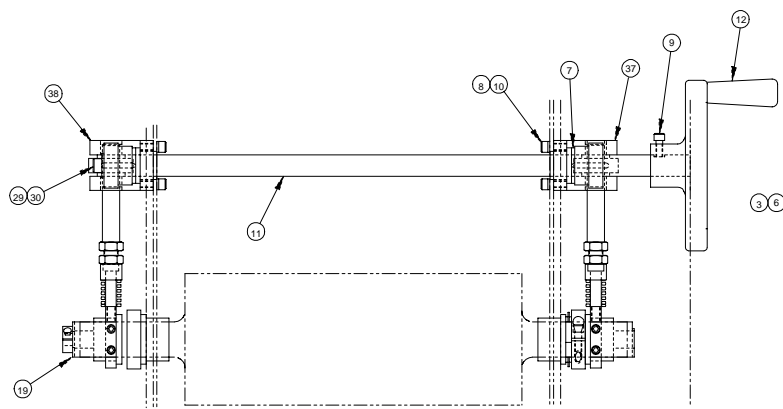
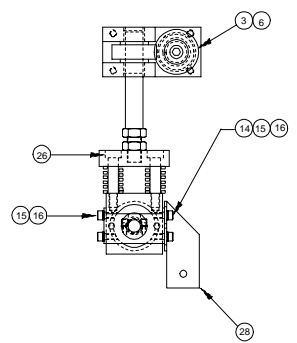
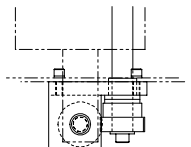


3128	3034	2590	SHEET 1 OF 1		UNLESS OTHERWISE SPECIFIED		 4124 Tridonian Road, DeForest, Wisconsin Phone (800) 246-8862 Fax (800) 246-8864	
DATE	BY	SCALE	SIZE	DRG	TITLE ASSY,ROLL,PUL L			
E	D	C	C	001-033	DATE	9-10-93	DESIGN	RAS
REV	BY	DATE	DESCRIPTION	ANGLE	DATE	9-10-93	SCALE	1/1
1	C			10	DATE	9-10-93	SCALE	1/1

RECD	DESCRIPTION	PART NO.	ITEM
			1
			2
	GEAR HELL RH 10DP 24T 1.50.75 / 78H24R	430-008	3
			4
			5
	KEY, 3/16 X 1	-	6
	WASH THRT, 7/16, 12 / 78#120	032-002	7
	SHCS 1/4-20 X .75	-	8
	SHCS 1/4-20 X .625	-	9
	WASH LOCK, 14	-	19
	SKFT CRNK LIFT ROLL MAIN	710-000	11
	PROVWL 6 8240206	465-005	12
			13
	WASHER, FLAT #10	-	14
	SHCS 10-32 X .38	-	15
	WASH LOCK, 10	-	16
	BRKT MTO LTR	510-002	17
			18
	BRKT MTO LTR, W CLAMP	510-003	19
			20
			21
			22
	SW PHEYE /3SF-R221	250-100	23
	BRKT PHEYE/FALCON	510-029	24
			25
	SCRW SHLD, 3/16, 1.25, 5/16-18	-	26
			27
	BRACKET REFLECTOR PHEYE	510-657	28
	SHCS 5/16 X .5	-	29
	WASHER PLAT 5/16	-	30
			31
			32
			33
			34
			35
			36
			37
	ASSY LIFTR, ROLL MAIN	001-411	38
	ASSY LIFTR, ROLL MAIN	001-417	39



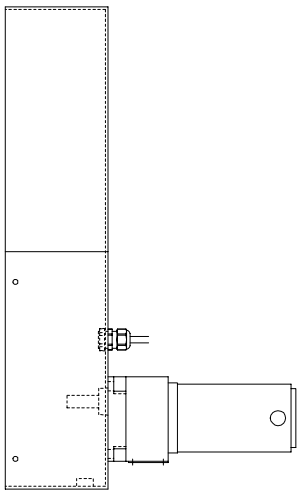
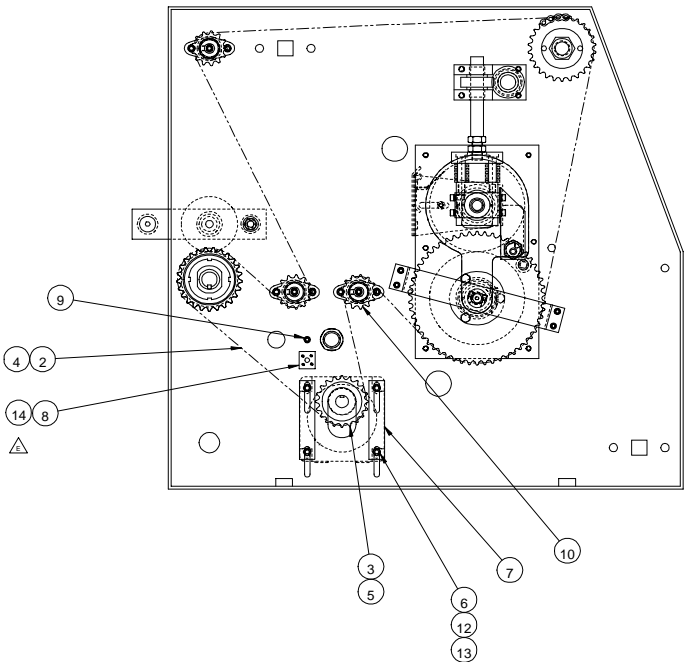
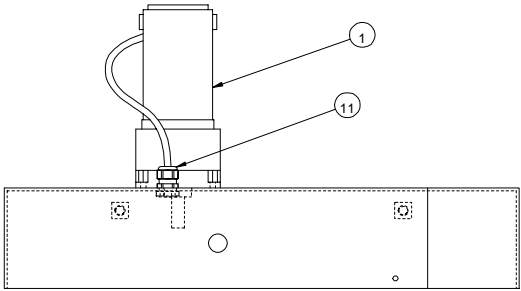
7 PROPRIETAR
 GBC PRO-TECH CLAIMS PRIMARY RIGHTS TO MATERIAL DISCLOSED ON THIS DRAWING. IT IS RELEASED FOR ENGINEERING INFORMATION ONLY AND SHALL NOT BE COPIED OR REPRODUCED IN ANY MANNER, OR USED IN MANUFACTURE OR FOR ANY OTHER PURPOSE WITHOUT PERMISSION FROM GBC PRO-TECH.



REV	DATE	BY	CHKD	APP'D
1	26/76			
2	25/90			

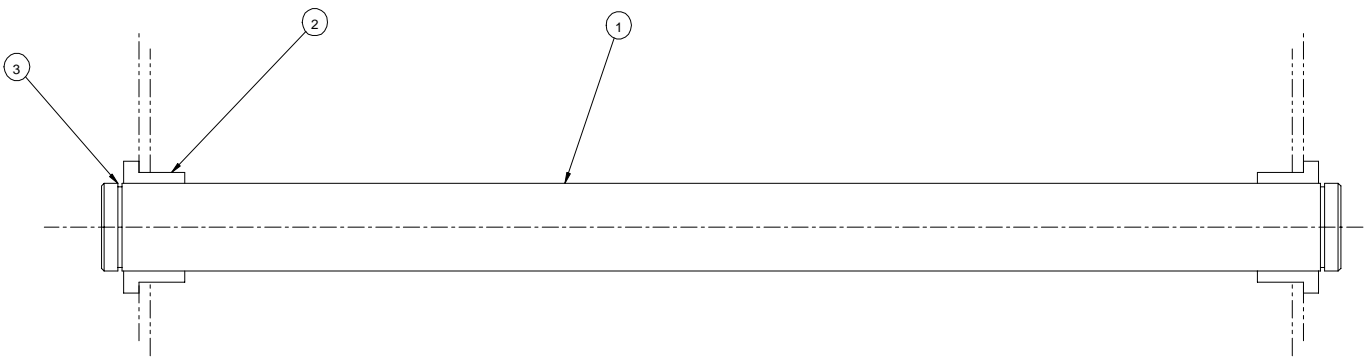
GBC PRO-TECH		TITLE	
14720000 - Lift Mechanism, Assembly		ASSY, LIFTR, ROLL MAIN	
14720000 - Lift Mechanism, Assembly		N	
SCALE	DATE	REV	DOC
1:1	1.2	D	001-034

REQ'D	DESCRIPTION	PART NO.	ITEM
1	MOTOR, 1/8 HP	425-000	1
1	CHAIN, 35	400-150	2
1	SPROCKET, 35, 20T, 5/8 BORE	435-175	3
1	CHAIN, LINK, MASTER	400-140	4
1	SCREW, SET, 1/4-20 X .375	-	5
4	WASHER, LOCK, STAR, 1/4	-	6
2	WASHER, BAR, 1/4	645-002	7
1	TERMINAL, BLOCK	217-043	8
1	NUT, NYLOCK, 10-32	-	9
3	ASSY, SPROCKET, IDLER	001-027	10
1	RELIEF, STRAIN, SMALL	175-180	11
4	SHCS, 1/4-20 X 1	-	12
4	NUT, HEX, 1/4-20	-	13
1	SHCS #4-40 X 3/4	-	14



REV		DATE	BY	CHKD	APP'D	TITLE			
E	D	2-16-94	RAS			ASSY, DRIVE, STANDAR FALCON- D			
3272		3128	3110	2528	0320	36			
UNLESS OTHERWISE SPECIFIED		Pro-Tech Engineering				Phone (202) 2428888 Fax (202) 242			
DRAWN		DATE		DIVISION		DRAWN		DWG NO.	
RAS		2-16-94		RAS		C4		001-035	

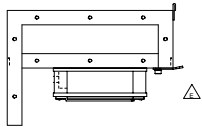
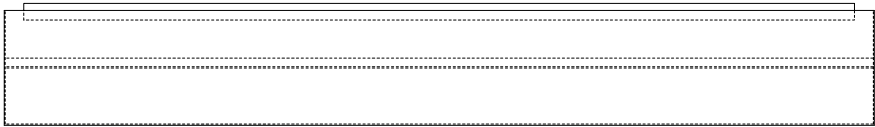
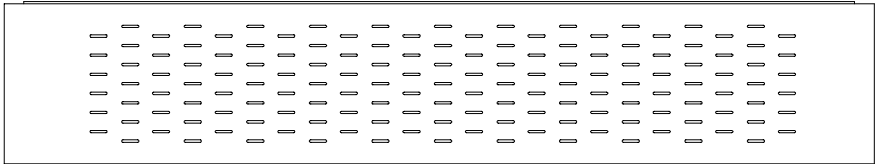
REQ'D	DESCRIPTION	PART NO.	ITEM
1	IDL,TEN	620-000	1
2	BUSH,BRNZ,FLNG,1,1.25,.75 /FB1620-6	040-016	2
2	RING,SNAP,1 /5100-100	090-140	3



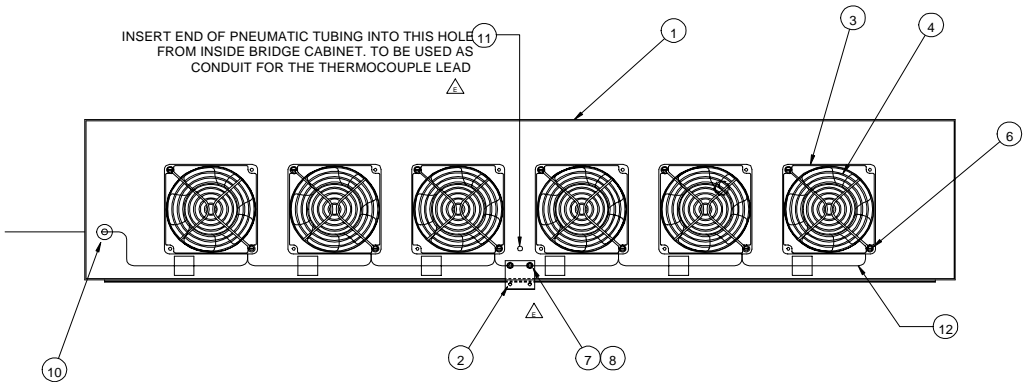
UNLESS OTHERWISE SPECIFIED				TOLERANCE				FINISH TO BE				TITLE			
DM	AS	TOL.	FINISH	DM	AS	TOL.	FINISH	ASSY.IDL,TEN,BRK				F-36			
F	F	F 1/64	F 125	F	F	F 1/64	F 125	DATE				DRAWN BY			
F	F	F 1/64	F 125	F	F	F 1/64	F 125	9-11-93				RAS			
F	F	F 1/64	F 125	F	F	F 1/64	F 125	DWG SCALE				001-036			
F	F	F 1/64	F 125	F	F	F 1/64	F 125	C1							

REQD	DESCRIPTION	PART NO.	ITEM
1	CAB,BRDG,FALCON	520-004	1
1	BRKT,MTG,TC	510-018	2
6	FAN,MUFFIN	182-101	3
6	GUARD,FAN	182-011	4
12	SCRW,PAN,6-32 X 2	-	6
20	SHCS,10-32 X .5	-	7
20	WASH,LOCK,10	-	8
1	GROMMET	175-000	10
5 FT	TUBING,PNEUMATIC,1/4	360-120	11
1	WIRE HARNESS,DAISY CHAIN	201-000	12

PROPRIETARY
 GBC PRO-TECH CLAIMS PROPRIETARY RIGHTS TO THE MATERIAL DISCLOSED ON THIS DRAWING. IT IS ISSUED IN CONFIDENCE FOR ENGINEERING INFORMATION ONLY AND SHALL NOT BE REPRODUCED, COPIED OR DISCLOSED IN WHOLE OR IN PART, OR USED FOR MANUFACTURE OR FOR ANY OTHER PURPOSE WITHOUT WRITTEN PERMISSION FROM GBC PRO-TECH

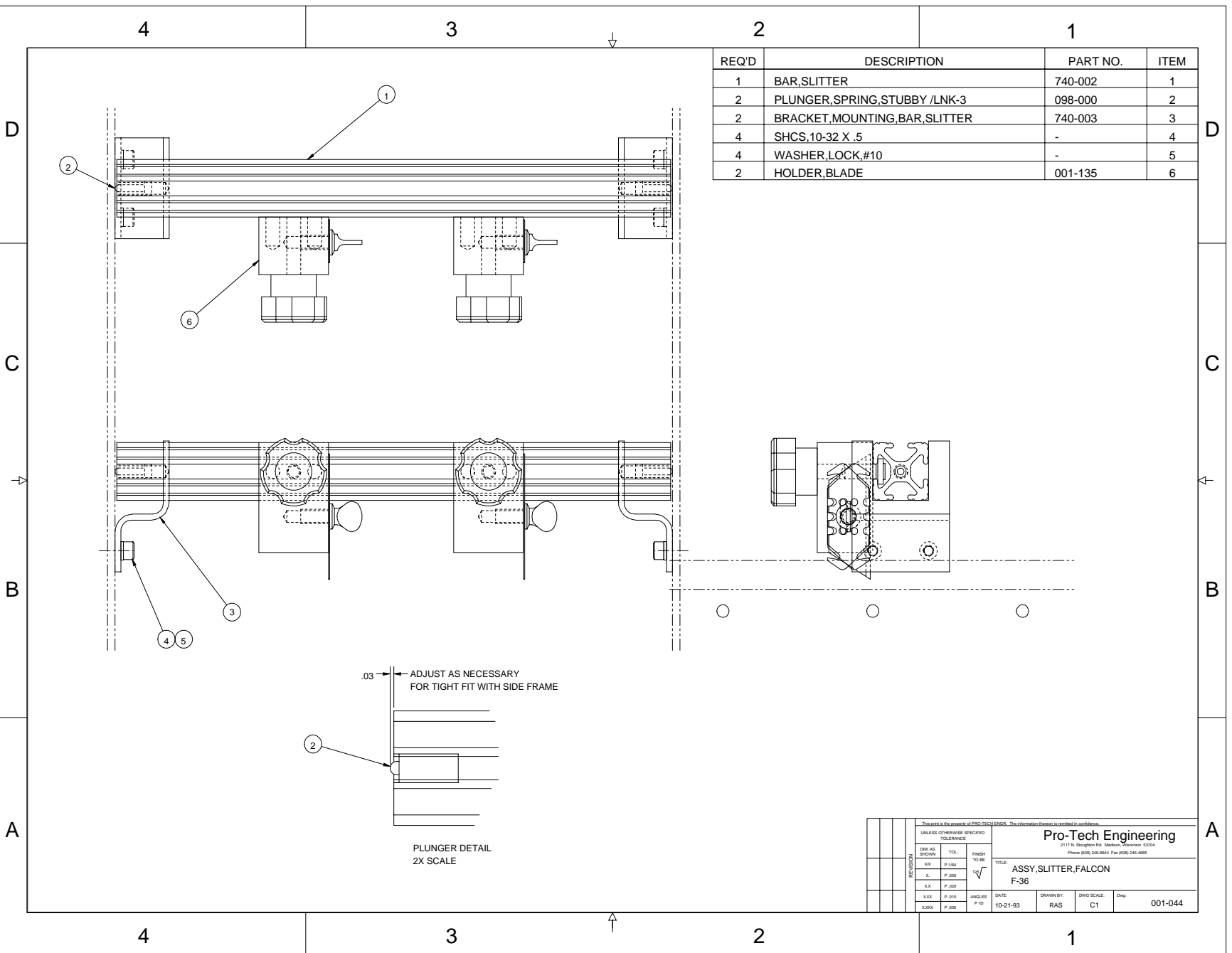


INSERT END OF PNEUMATIC TUBING INTO THIS HOLE FROM INSIDE BRIDGE CABINET. TO BE USED AS CONDUIT FOR THE THERMOCOUPLE LEAD



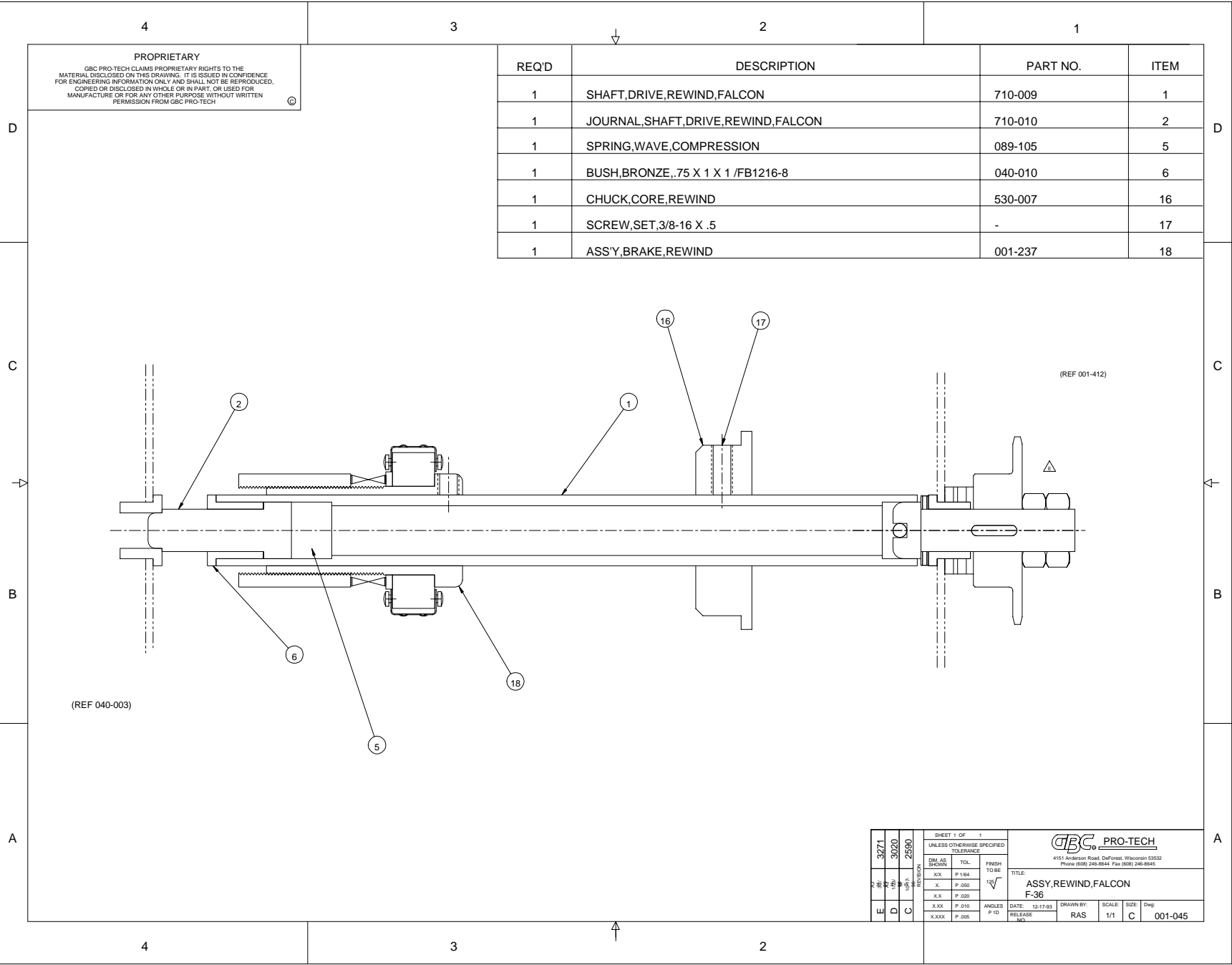
3049	1017	0689	0411	0300	SHEET 1 OF 1 REF!	
REV	DATE	BY	CHKD	APP'D	UNLESS OTHERWISE SPECIFIED TOLERANCES	GBC PRO-TECH 415 Ardmore Road, DuPont, Wyoming 82032 Phone (307) 248-9844 Fax (307) 248-9845
E	D	C	B	A	DIM AB BOUN TOL .XX P.184 .X P.184 .XX P.184 .XXX P.184 .XXX P.184 .XXX P.184	
TITLE		DATE		DRWING	SCALE	SIZE
#REF!		#REF!		#REF!	#REF!	#REF!
#REF!		#REF!		#REF!	#REF!	#REF!

REQ'D	DESCRIPTION	PART NO.	ITEM
1	BAR,SLITTER	740-002	1
2	PLUNGER,SPRING,STUBBY /LNK-3	098-000	2
2	BRACKET,MOUNTING,BAR,SLITTER	740-003	3
4	SHCS,10-32 X .5	-	4
4	WASHER,LOCK,#10	-	5
2	HOLDER,BLADE	001-135	6



This plan is the property of FSC, TECH ENGR. The information herein is confidential and/or unclassified.

UNLESS OTHERWISE SPECIFIED TOLERANCE		Pro-Tech Engineering	
2117 N. Slaughter Rd. Madison, Wisconsin 53704		Phone (608) 248-8844 Fax (608) 248-4955	
TITLE: ASSY,SLITTER,FALCON		DATE: 10-21-93	
F-36		DRAWN BY: RAS	
DWG SCALE: C1		Dep: 001-044	

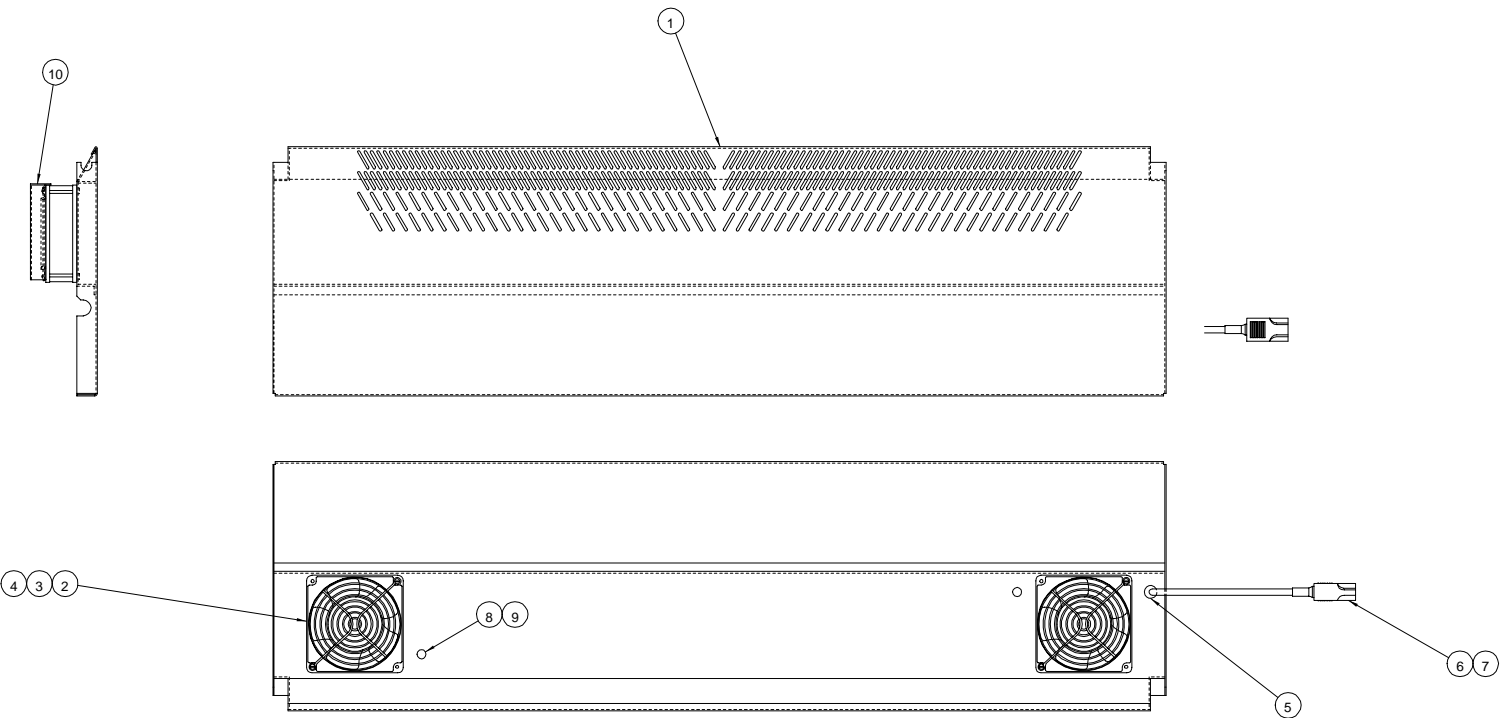


REQ'D	DESCRIPTION	PART NO.	ITEM
1	SHAFT,DRIVE,REWIND,FALCON	710-009	1
1	JOURNAL,SHAFT,DRIVE,REWIND,FALCON	710-010	2
1	SPRING,WAVE,COMPRESSION	089-105	5
1	BUSH,BRONZE,.75 X 1 X 1 /FB1216-8	040-010	6
1	CHUCK,CORE,REWIND	530-007	16
1	SCREW,SET,3/8-16 X .5	-	17
1	ASSY,BRAKE,REWIND	001-237	18

PROPRIETARY
 GBC PRO-TECH CLAIMS PROPRIETARY RIGHTS TO THE MATERIAL DISCLOSED ON THIS DRAWING. IT IS ISSUED IN CONFIDENCE FOR ENGINEERING INFORMATION ONLY AND SHALL NOT BE REPRODUCED, COPIED OR DISCLOSED IN WHOLE OR IN PART, OR USED FOR MANUFACTURE OR FOR ANY OTHER PURPOSE WITHOUT WRITTEN PERMISSION FROM GBC PRO-TECH

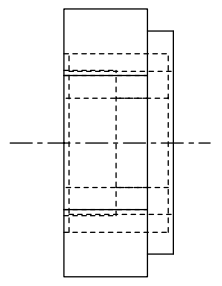
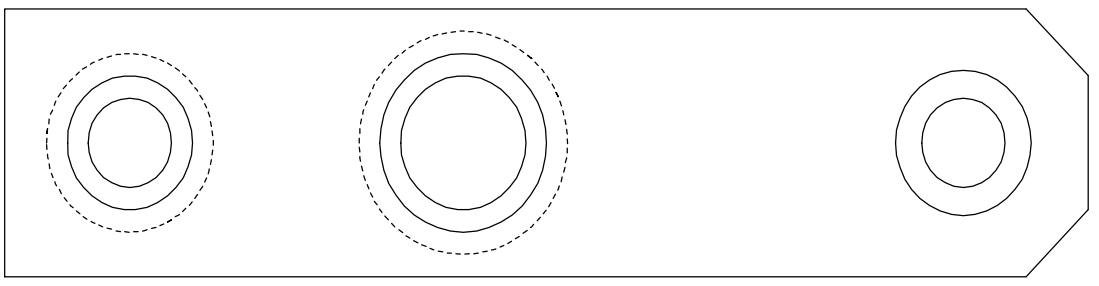
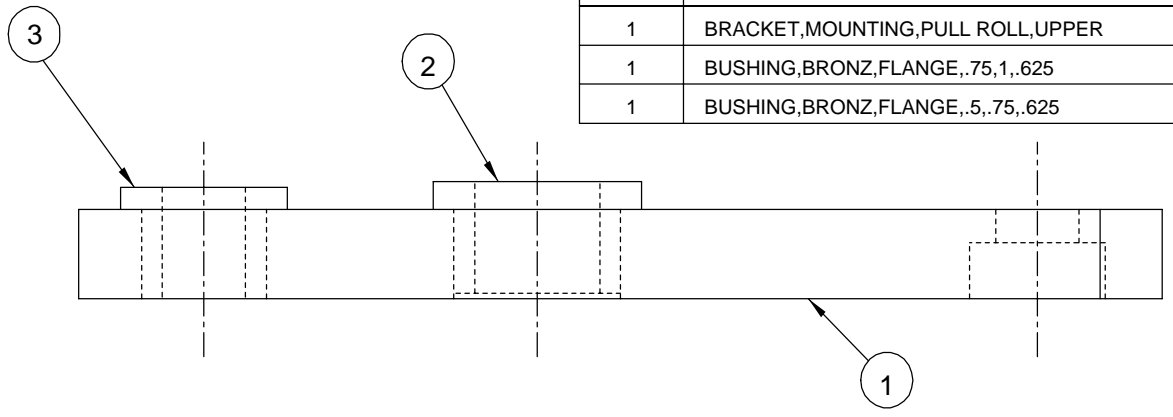
SHEET 1 OF 1		UNLESS OTHERWISE SPECIFIED TOLERANCE		GBC PRO-TECH	
DIM. AS SHOWN		TOL.	FINISH TO BE	4151 Anderson Road, Duffin, Woodburn, ON L3R 9V2 Phone (608) 246-8844 Fax (608) 246-8645	
XXX	P.1/64		✓	TITLE: ASSY,REWIND,FALCON	
X	P.050			F-36	
XX	P.020			DRAWN BY: RAS	
XXX	P.010	ANGLES P.10	DATE: 12-17-93	SCALE: 1/1	SIZE: C
XXXX	P.005		RELEASE NO.:		Dwg: 001-045

REQ'D	DESCRIPTION	PART NO.	ITEM
1	TABLE,INFEED,VAC	760-003	1
2	FAN,MUFFIN,230 /3-15-3451	182-101	2
2	GUARD,FAN	182-011	3
8	SCREW,PAN,6-32 X 2	-	4
1	RELIEF,STRAIN,CABLE /1214	175-006	5
1	ASSEMBLY,CABLE,POWER,VAC TABLE	001-127	6
2	RELIEF,STRAIN,CABLE /1077	175-003	8
4	CABLE,18/2	270-109	9
2	SHIELD,DEFLECTOR,FAN	585-003	10



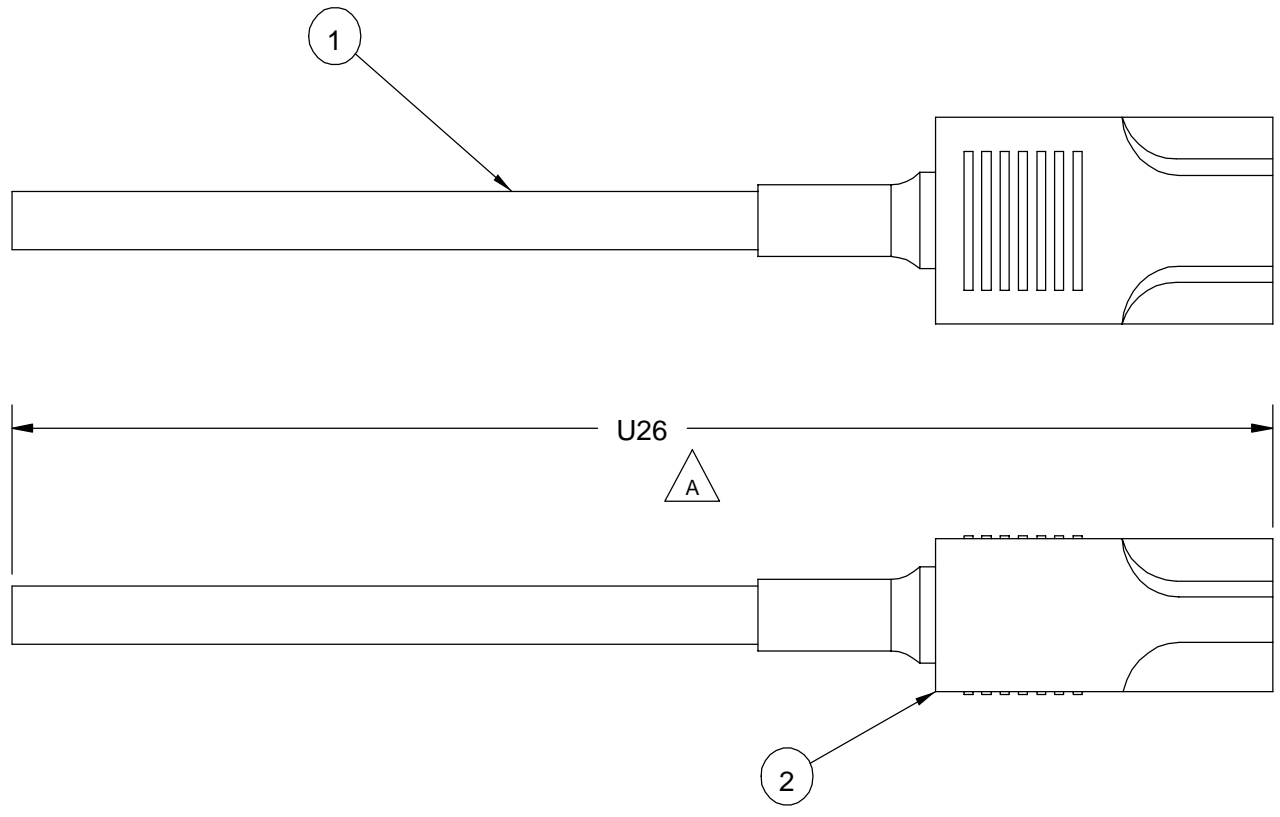
UNLESS OTHERWISE SPECIFIED TOLERANCE		FINISH		TITLE	
DM, AS	TOL.	TO BE	√	Pro-Tech Engineering	
SPRINK.				217 N. Brighton Rd. Madison, Wisconsin 53704	
.XX	P.184			Phone (608) 248-8844 Fax (608) 248-4838	
.X	P.250			ASSY.TBL,INFD,VAC,FALCON-36	
.XX	P.220		F-36		
.XXX	P.210	ANGLES	DATE	DRAWN BY:	DWG SCALE: Dep
.XXX	P.205	P ID	2-15-94	RAS	C4 001-067

REQ'D	DESCRIPTION	PART NO.	ITEM
1	BRACKET,MOUNTING,PULL ROLL,UPPER	510-010	1
1	BUSHING,BRONZ,FLANGE,.75,1,.625	040-008	2
1	BUSHING,BRONZ,FLANGE,.5,.75,.625	040-014	3



This print is the property of PRO-TECH ENGR. The information thereon is remitted in confidence.					
UNLESS OTHERWISE SPECIFIED TOLERANCE			Pro-Tech Engineering 2117 N. Stoughton Rd. Madison, Wisconsin 53704 Phone (608) 246-8844 Fax (608) 246-4685		
REVISION	DIM. AS SHOWN	TOL.	FINISH TO BE 125√	TITLE:	
	X/	P 1/64		ASS'Y,ARM,PULL ROLL FALCON-36	
	X.	P .050			
	X.	P .020	ANGLE B 1D	DATE:	DRAWN BY:
	X.X	P .010		4-5-94	RAS
X.XX	P .005		DWG SCALE:	Dwg:	
X			A1	001-112	

REQ'D	DESCRIPTION	PART NO.	ITEM
-	CABLE,POWER,18/3	270-110	1
1	PLUG,MALE	201-190	2

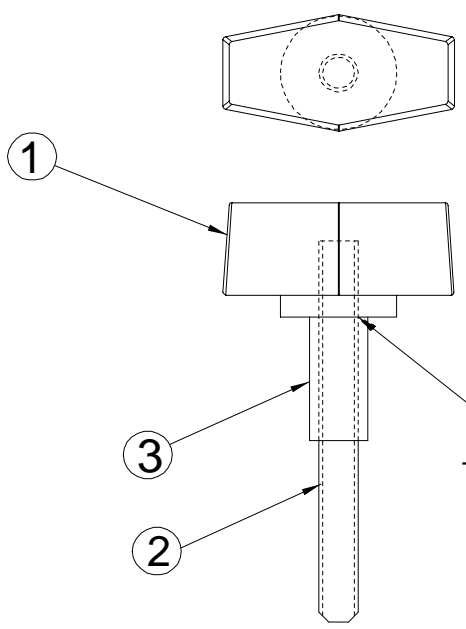
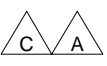


This print is the property of PRO-TECH ENGR. The information thereon is remitted in confidence.				Pro-Tech Engineering 2117 N. Stoughton Rd. Madison, Wisconsin 53704 Phone (608) 246-8844 Fax (608) 246-8645			
UNLESS OTHERWISE SPECIFIED TOLERANCE				TITLE: ASSEMBLY,CABLE,POWER,VAC TABLE FALCON 36			
DIM. AS SHOWN	TOL.	FINISH TO BE $125\sqrt{\quad}$	ANGLES P 1D	DATE:	DRAWN BY:	DWG SCALE:	Dwg:
X/X	P 1/64			6-10-94	RAS	A1	001-127
X.	P .050						
X.X	P .020						
X.XX	P .010						
X.XXX	P .005						

RAS	0672
9-26-98/15/10/1	
A	

REQ'D	DESCRIPTION	PART NO.	ITEM
1	KNOB,CLAMP,FEMALE,1/4-20	465-008	1
1	SET SCREW 1/4-20 X 2.5 CUP POINT	050-030	2
1	SPACER	720-001	3

PROPRIETARY
 GBC PRO-TECH CLAIMS PROPRIETARY RIGHTS TO THE MATERIAL DISCLOSED ON THIS DRAWING. IT IS ISSUED IN CONFIDENCE FOR ENGINEERING INFORMATION ONLY AND SHALL NOT BE REPRODUCED, COPIED OR DISCLOSED IN WHOLE OR IN PART, OR USED FOR MANUFACTURE OR FOR ANY OTHER PURPOSE WITHOUT WRITTEN PERMISSION FROM GBC PRO-TECH



USE GREEN LOCKTITE TO LOCK SCREW IN PLACE

MS	2577	10-5-96
J.S.	1014	6-14-95
RAS	0670	9-26-94
REVISION	A	

SHEET 1 OF 1
 UNLESS OTHERWISE SPECIFIED TOLERANCE

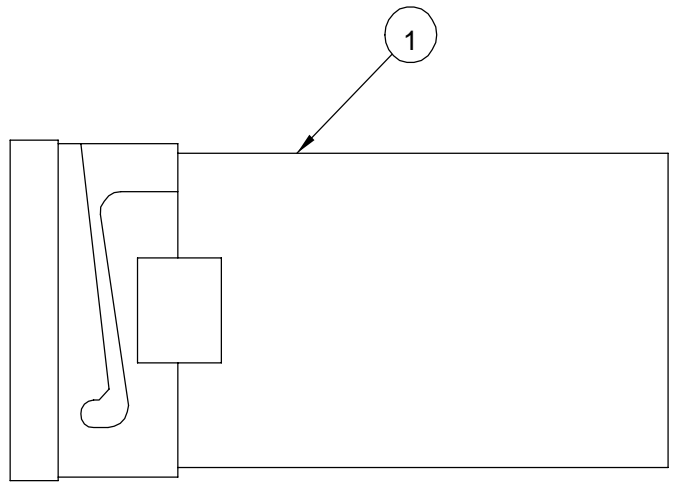
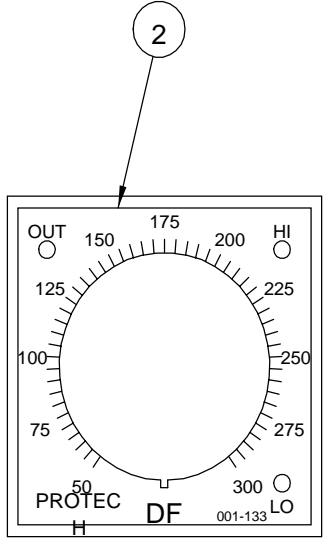
DIM. AS SHOWN	TOL.	FINISH TO BE
X/X	P 1/64	125
X.	P .050	
X.X	P .020	
X.XX	P .010	
X.XXX	P .005	ANGLES P 1D

GBC PRO-TECH
 4151 Anderson Road, DeForest, Wisconsin 53532
 Phone (608) 246-8844 Fax (608) 246-8645

TITLE: **ASSEMBLY, KNOB, CLAMP, BRAKE FALCON 36**

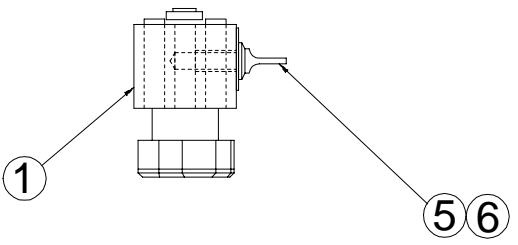
DATE: 6-23-94	DRAWN BY: RAS	SCALE: A1	SIZE:	Dwg: 001-131
RELEASE NO.				

REQ'D	DESCRIPTION	PART NO.	ITEM
1	CONTROLLER,TEMPERATURE	230-003	1
1	OVERLAY,50-300,%%DF	450-004	2



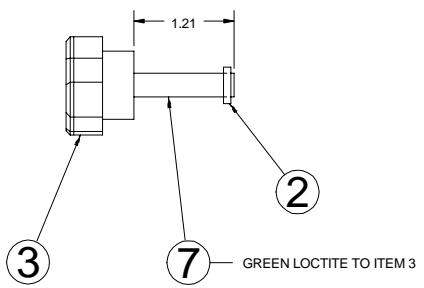
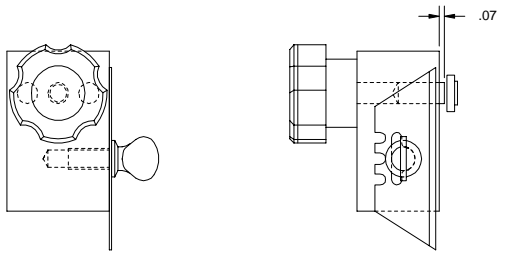
This print is the property of PRO-TECH ENGR. The information thereon is remitted in confidence.			
UNLESS OTHERWISE SPECIFIED TOLERANCE		Pro-Tech Engineering	
		2117 N. Stoughton Rd. Madison, Wisconsin 53704 Phone (608) 246-8844 Fax (608) 246-8645	
TITLE:		ASSEM,CONTROLLER,TEMP,%%DF	
DATE:	DRAWN BY:	DWG SCALE:	Dwg:
7-21-94	RAS	A1	001-133

REQ'D	DESCRIPTION	PART NO.	ITEM
1	HOLDER, BLADE	740-001	1
1	NUT, T-SLOT, 1/4-20 /3382	050-001	2
1	KNOB, KNURLED /DK-510	465-007	3
2	PIN, DOWEL, 1/4 X .5	095-190	4
1	SCREW, THUMB, 1/4-20 X .5	092-140	5
5	BLADE, RAZOR	475-002	6
1	SCREW, SET, 1/4-20 X 1.75 /25337	050-014	7



NOTE:
 SEE 001-044 FOR REST OF SLITTER ASSEMBLY.

A
 4 PRESS INTO PLACE AND GLUE WITH BLACK MAX 380



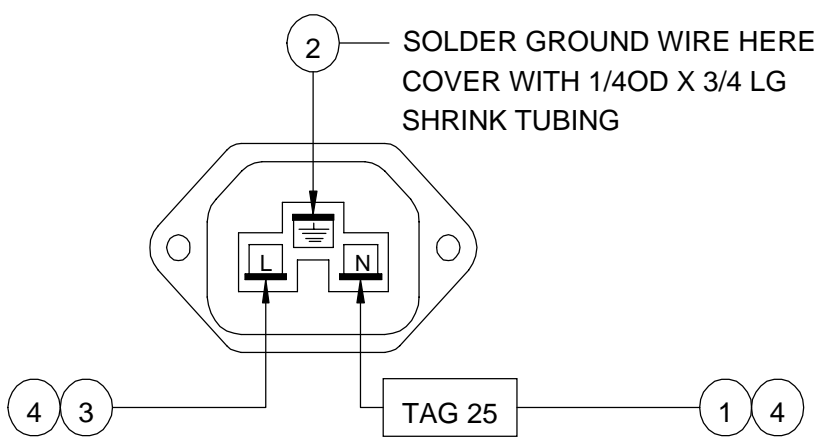
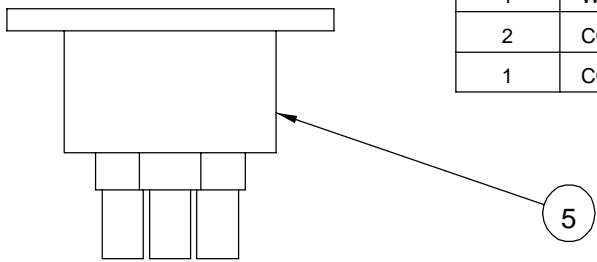
A	3271	A/H 3/5/99	ADD NOTES & DIMENSION LOCATING PINS
REV	ECN	BY	DESCRIPTION
UNLESS OTHERWISE SPECIFIED TOLERANCE			 4151 Anderson Road, DeForest, Wisconsin 53532 Phone (608) 246-8544 Fax (608) 246-8545
DM. AS SHOWN	TOL.	FINISH TO BE	
.XX	F .154	12/√	
X.	F .250		
X.X	F .250		TITLE: SLITTER ASSEMBLY FALCON 36
X.XX	F .010	ANGLES DATE:	DRAWN BY: SCALE: SIZE: Dwg: 001 - 135
X.XXX	F .005	P. 1D RELEASE NO.	

REQ'D	DESCRIPTION	PART NO.	ITEM
2	TOWEL,WHITE	475-950	1
1	VIDEO	000-040	2
1	ZIPPY KNIFE	475-620	3
1	ALLEN WRENCH SET	475-230	4
4	1/4-20 x 2 SHCS	FLR STK ITEM	5
2	FUSE, SB, 3AG, 3A	186-200	6
1	TAPE MEASURE	475-100	7
			8
1	RUBBER CEMENT PICK-UP	930320	9
2	FUSE, SB, 3AG, 2.5A	186-220	10
1	BOX ACCESSORY	475-010	11
1	FALCON OPERATION MANUAL	930400	12

This print is the property of PRO-TECH ENGR. The information thereon is remitted in confidence.											
UNLESS OTHERWISE SPECIFIED TOLERANCE				Pro-Tech Engineering 2117 N. Stoughton Rd. Madison, Wisconsin 53704 Phone (608) 246-8844 Fax (608) 246-8645							
DIM. AS SHOWN		TOL.		FINISH TO BE		TITLE:					
X/		P 1/		125√		ACCESSORY KIT, FALCON					
X		64									
X.		P									
X.		.050									
X.		P									
X		.020									
X.X		P		ANGLES		DATE:		DRAWN BY:		DWG SCALE:	
X		.010		P 1D		1-29-96		RLM		A1	
X.XX		P								Dwg	
X		.005								001-137	

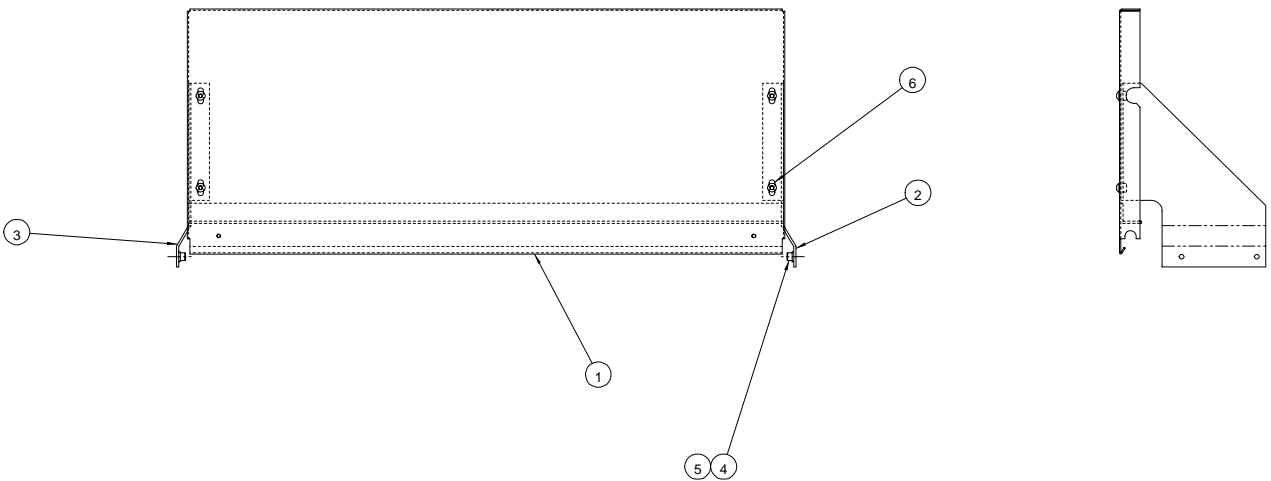
2993	11/11/97	B
2991	11-5-97	A

REQ'D	DESCRIPTION	PART NO.	ITEM
1	WIRE,RED,22AWG,#F085	-	1
1	WIRE,GREEN/YELLOW,GROUND,#F082	-	2
1	WIRE,LT BLUE,22AWG,#F083	-	3
2	CONNECTOR,PUSH ON	-	4
1	CONNECTOR,RECEPTACLE,FEMALE	201-185	5



This print is the property of PRO-TECH ENGR. The information thereon is remitted in confidence.			
UNLESS OTHERWISE SPECIFIED TOLERANCE		Pro-Tech Engineering 2117 N. Stoughton Rd. Madison, Wisconsin 53704 Phone (608) 246-8844 Fax (608) 246-8645	
DIM. AS SHOWN	TOL.		
X/	P 1/	125√	
X	64		
X	P		
X	.050		
X	P		
X	.020		
X,X	P	ANGLE	
X	.010	P ^S 1D	
X,XX	P	DATE:	
X	.005	9-27-94	
		DRAWN BY:	
		RAS	
		DWG SCALE:	
		A1	
		Dwg:	
		001-172	

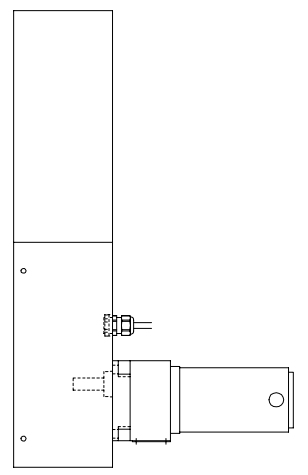
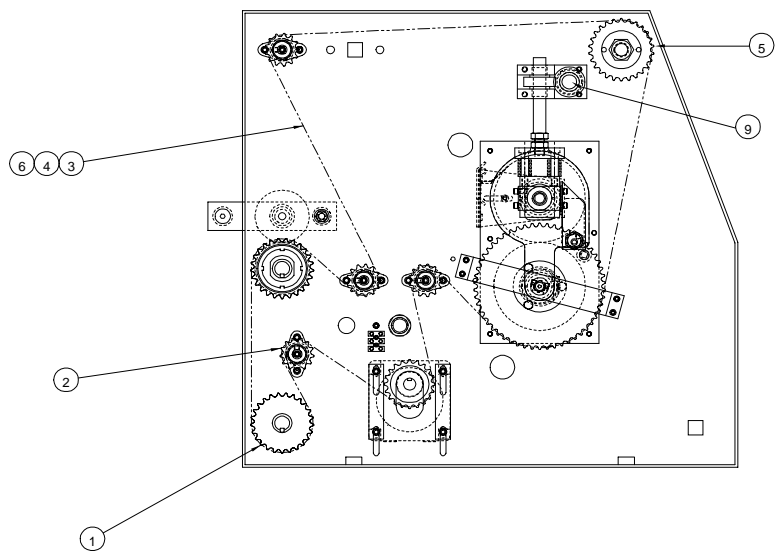
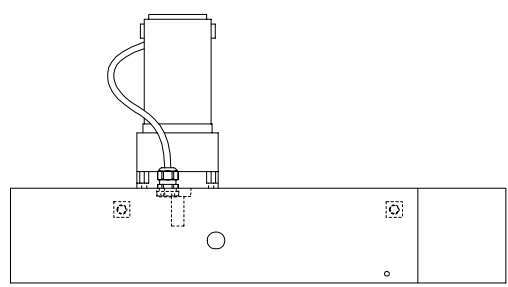
REQ'D	DESCRIPTION	PART NO.	ITEM
1	TABLE,INFEED	760-057	1
1	BRACKET,TABLE,REAR,LEFT	510-064	2
1	BRACKET,TABLE,REAR,RIGHT	510-062	3
4	SHCS,1/4-20 X .5	-	4
4	WASHER,LOCK,1/4	-	5
4	BHCS,1/4-20 X .5	-	6



<small>This print is the property of PRO-TECH ENGR. The information herein is warranted in confidence.</small>			
UNLESS OTHERWISE SPECIFIED TOLERANCE		Pro-Tech Engineering <small>2117 S. Douglas St., Madison, WI 53704-1070</small> <small>Phone (608) 248-8844 Fax (608) 248-4855</small>	
DIM. AS SHOWN	TOL.	FINISH TO BE	TITLE: ASSEMBLY, TABLE, OUTFEED, OPTION F - 36
.XX	P/1/	$\sqrt{\text{ }}$	DATE: 9-29-94
.X	P/		DRAWN BY: RAS
.X	P/		DWG SCALE: c4
.XX	P/		Dwg: 001-174
.XXX	P/		

REQ'D	DESCRIPTION	PART NO.	ITEM
1	ASSEMBLY.REWIND.FALCON	001-045	1
1	ASSY.SPROCKET.IDLER	001-027	2
101.25	CHAIN,35	400-120	3
1	CHAIN.LINK.MASTER	400-140	4
1	ASSY.SPROCKET.FALCON	001-412	5
1	LINK.CHAIN,1/2	400-130	6
1	BUSH.,BRONZE, FB1016-6	040-003	9

PROPRIETARY
 GBC PRO-TECH CLAIMS PROPRIETARY RIGHTS TO THE MATERIAL DISCLOSED ON THIS DRAWING. IT IS ISSUED IN CONFIDENCE FOR ENGINEERING INFORMATION ONLY AND SHALL NOT BE REPRODUCED, COPIED OR DISCLOSED IN WHOLE OR IN PART, OR USED FOR MANUFACTURE OR FOR ANY OTHER PURPOSE WITHOUT WRITTEN PERMISSION FROM GBC PRO-TECH



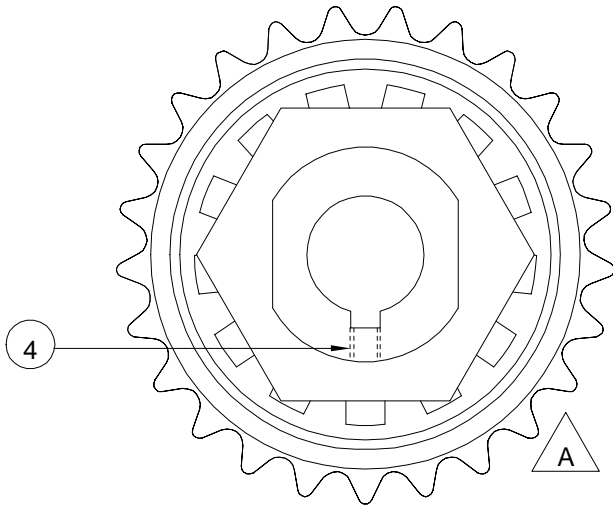
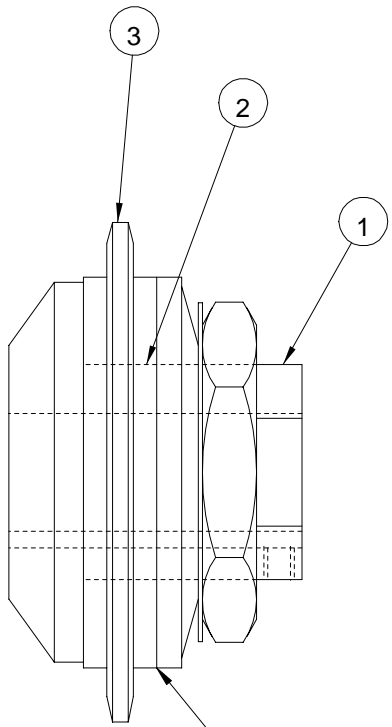
3036		2638		SHEET 1 OF 1	
REV	DATE	BY	CHKD	UNLESS OTHERWISE SPECIFIED TOLERANCE	
A		V		DM: AS	TOL.
B				SURF: XX	F 1/64
				X	P .050
				XX	P .020
				XXX	P .010
				XXX	P .005
				ANGLES	FINISH TO BE
				P 10	IR
				DATE: 10-10-94	TITLE: ASSY.REWIND,OPTIONAL FALCON-36
				RELEASE NO.	DRAWN BY: RAS
				SCALE: 1/1	SIZE: C
				DRG NO: 001-177	



4151 Anderson Road, DNF Forest, Wisconsin 53032
 Phone (800) 726-8844 Fax (800) 245-8845

PROPRIETARY
 GBC PRO-TECH CLAIMS PROPRIETARY RIGHTS TO THE MATERIAL DISCLOSED ON THIS DRAWING. IT IS ISSUED IN CONFIDENCE FOR ENGINEERING INFORMATION ONLY AND SHALL NOT BE REPRODUCED, COPIED OR DISCLOSED IN WHOLE OR IN PART, OR USED FOR MANUFACTURE OR FOR ANY OTHER PURPOSE WITHOUT WRITTEN PERMISSION FROM GBC PRO-TECH

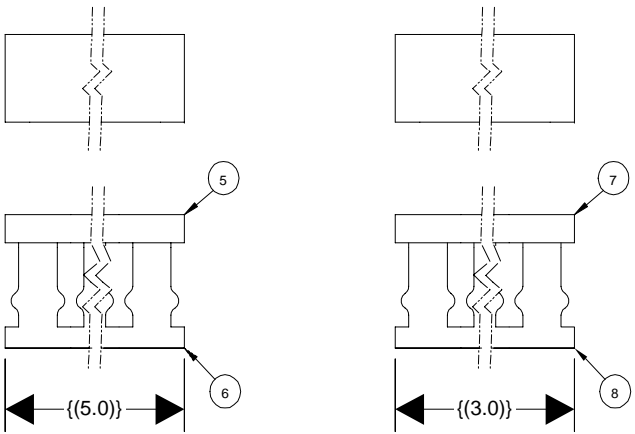
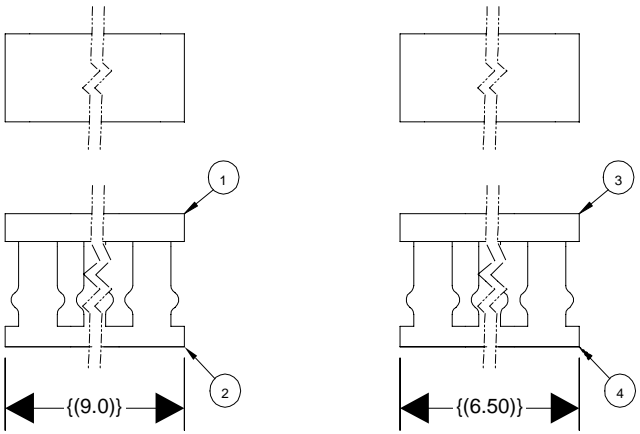
REQ'D	DESCRIPTION	PART NO.	ITEM
1	TORQUE LIMITER	435-240	1
1	BUSHING, TORQUE LIMITER	040-120	2
1	SPROCKET, 35, 25T	435-245	3
1	BRASS TIP SET SCREW 10-24 X 1/4	050-024	4



APPLY LUBRIPLATE DOW #44 GREASE TO EACH SURFACE OF BRAKE PADS.

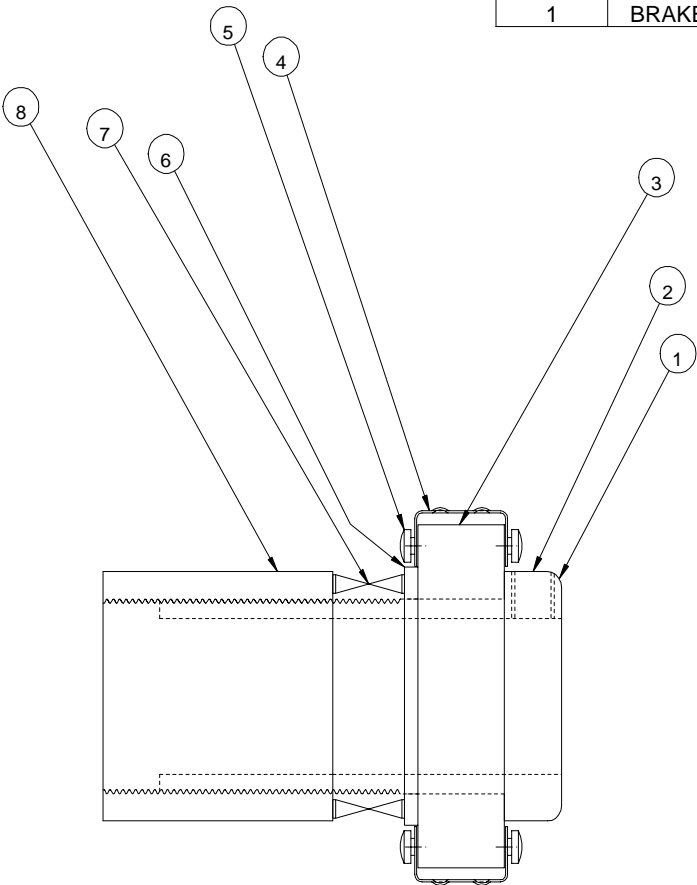
M		2577	SHEET 1 OF 1			 4151 Anderson Road, DeForest, Wisconsin 53532 Phone (608) 246-8844 Fax (608) 246-8645	
S		1019	UNLESS OTHERWISE SPECIFIED TOLERANCE				
JJS		6-15-95	DIM. AS SHOWN	TOL.	FINISH TO BE	TITLE:	
A			X/	P 1/64	125 ✓	ASSEMBLY, TORQUE, LIMITER	
B			X.	P .050		F - 36	
			X.	P .020		DATE: 10-19-94	DRAWN BY:
			X.X	P .010	ANGLES P 1D	RELEASE NO.	RAS
			X.XX	P .005		SCALE: 1/1	SIZE: A
			X			Dwg: 001-180	

REQD	DESCRIPTION	PART NO.	ITEM
1	DUCT COVER, 1 X 9 " LG	180-130	1
1	DUCT BASE, 1 X 9 " LG (WITH ADHESIVE)	180-140	2
1	DUCT COVER, 1 X 6.5" LG	180-130	3
1	DUCT BASE, 1 X 6.5" LG (WITH ADHESIVE)	180-140	4
1	DUCT COVER, 1 X 5" LG	180-130	5
1	DUCT BASE, 1 X 5" LG (WITH ADHESIVE)	180-140	6
1	DUCT COVER, 1 X 3" LG	180-130	7
1	DUCT BASE, 1 X 3" LG (WITH ADHESIVE)	180-140	8
2	DUCT COVER, 1 X 2" LG	180-130	9
2	DUCT BASE, 1 X 2" LG (WITH ADHESIVE)	180-140	10



REV	ECN	BY	DESCRIPTION
UNLESS OTHERWISE SPECIFIED TOLERANCE:			GBC PRO-TECH 4151 Anderson Road, DeForest, Wisconsin 53532 Phone (908) 246-8844 Fax (908) 246-8845 TITLE: PANDUIT ASSEMBLY FALCON 36
DIM AS SHOWN	TOL.	FINISH TO USE	
XX	P 1/64	✓	
X	P .050		
XX	P .020		
X,XX	P .010	ANGLES P 1D	DATE: _____
X,XXX	P .005	RELEASE	NO. _____
DRAWN BY: _____			SCALE: _____
SIZE: _____			Dwg. 001 - 232

REQ'D	DESCRIPTION	PART NO.	ITEM
1	HUB,BRAKE,REWIND	625-002	1
1	SCREW,SET,3/8-16 X .250	050-023	2
1	CHUCK,CORE,QUICK RELEASE,REWIND	530-006	3
3	GRIPPER,CORE	100-032	4
6	SCREW,SELF-TAPING,#6-32 X .375	-	5
1	WASHER,NYLON	035-100	6
1	SPRING,WAVE	089-130	7
1	BRAKE,ADJUST NUT,REWIND	625-004	8



UNLESS OTHERWISE SPECIFIED				TOLERANCE			
DIM. AS SHOWN	F.154	F.154	F.154	F.154	F.154	F.154	F.154
XX	F.154	F.154	F.154	F.154	F.154	F.154	F.154
X	F.154	F.154	F.154	F.154	F.154	F.154	F.154
XX	F.154	F.154	F.154	F.154	F.154	F.154	F.154
XX	F.154	F.154	F.154	F.154	F.154	F.154	F.154
XXX	F.154	F.154	F.154	F.154	F.154	F.154	F.154
DATE:	2-22-95	DRAWN BY:	KL	DWG SCALE:	C1	Dep:	001-237

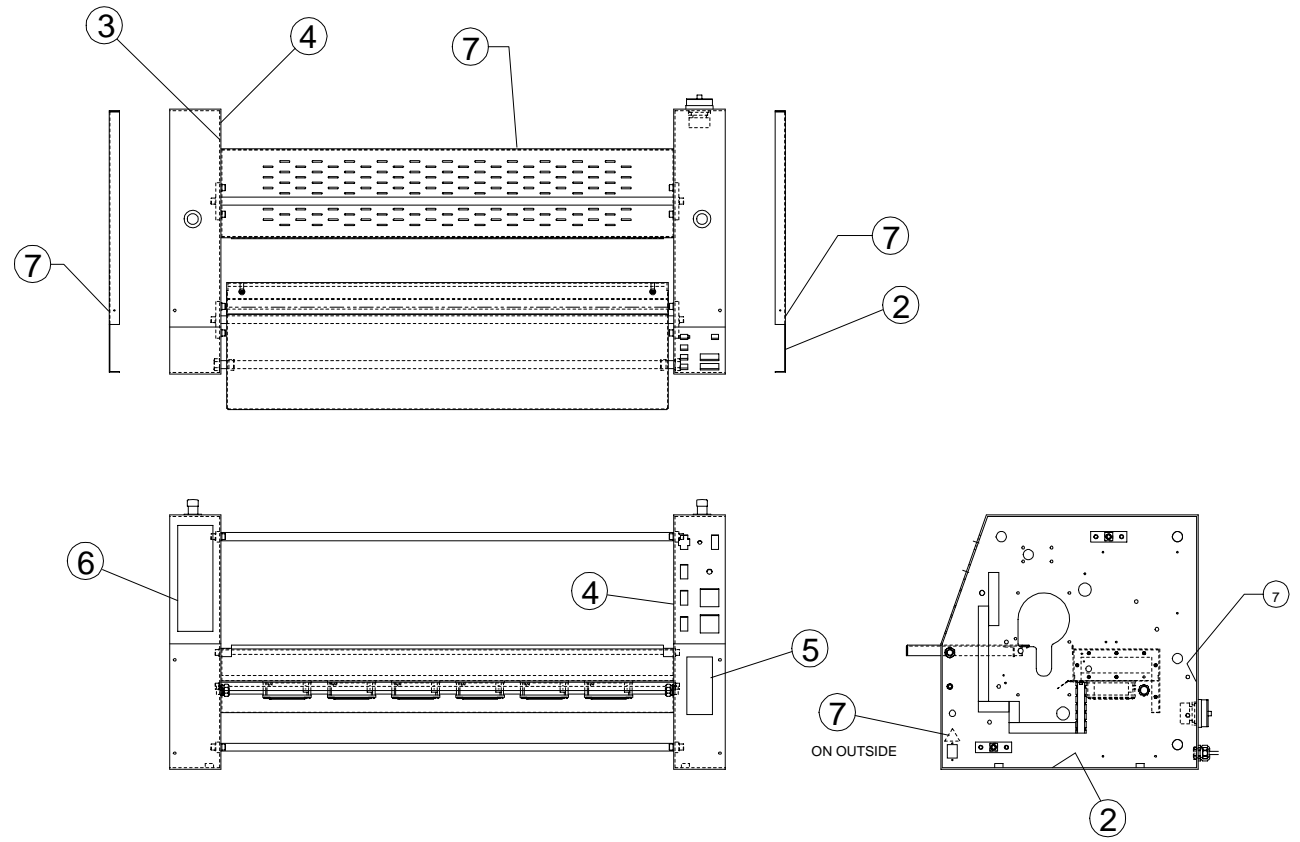
Pro-Tech Engineering

2117 N. Stoughton Rd. Madison, Wisconsin 53704
Phone (608) 246-8544 Fax (608) 246-8545

TITLE: ASSY,BRAKE,REWIND
F - 36

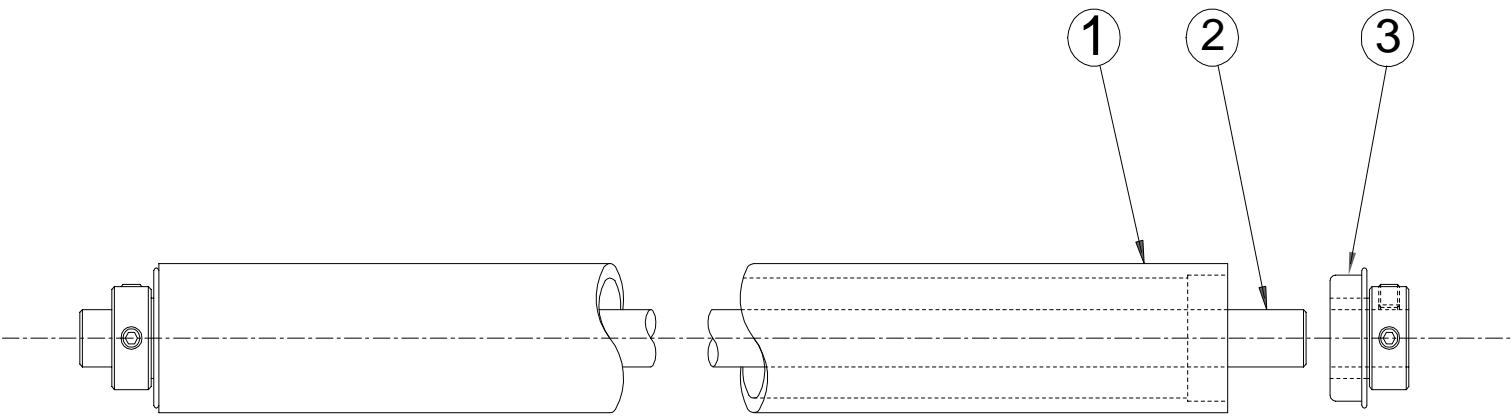
REQ'D	DESCRIPTION	PART NO.	ITEM
2	DECAL,DANGER HAZARDOUS VOLTAGE	450-131	2
1	DECAL,WARNING MOVING PARTS	450-132	3
2	DECAL,WARNING CRUSH AND BURN,RIGHT	450-134	4
1	DECAL,WARNING READ MANUAL	450-135	5
1	DECAL,READ SAFETY INSTRUCTIONS	450-136	6
5	DECAL, HIGH VOLTAGE	450-035	7

PLACE INSIDE
CABINET
IN VISIBLE LOCATION



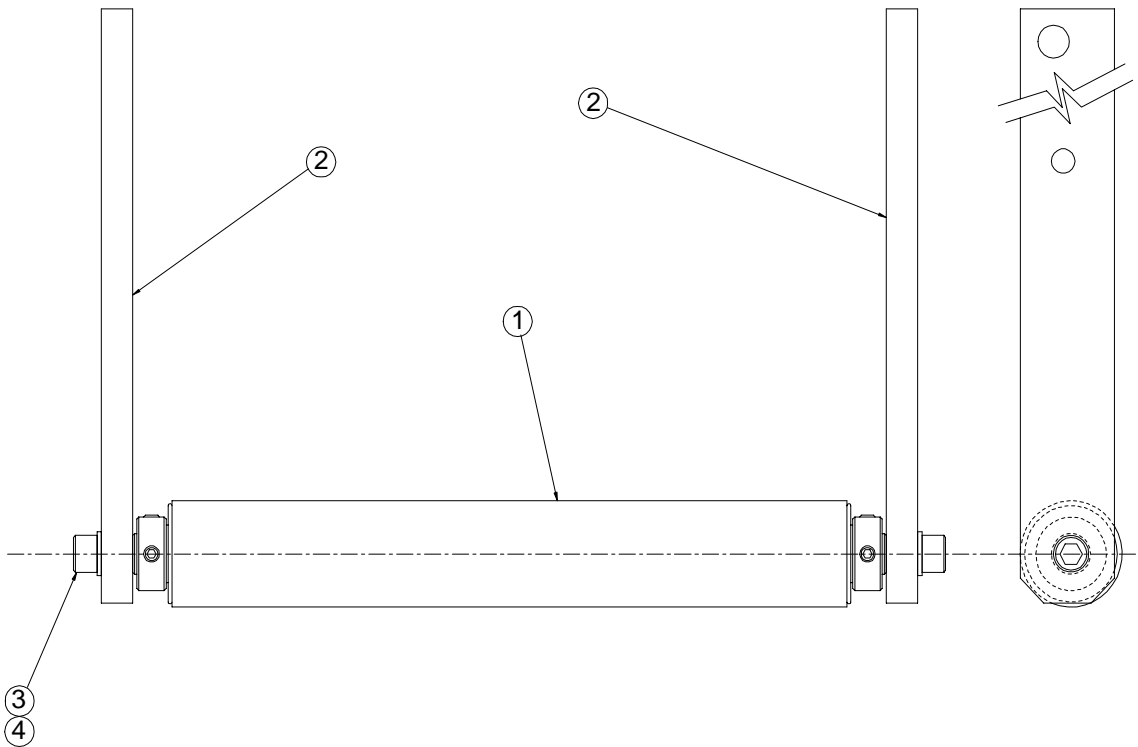
UNLESS OTHERWISE SPECIFIED TOLERANCES				Pro-Tech Engineering 3117 N. Douglas Rd. Madison, Wisconsin 53704 Phone (608) 246-8844 Fax (608) 246-9545			
DIM. AS SHOWN	TOL.	FINISH	TO BE	TITLE KIT, SAFETY LABEL FALCON 36			
.X/X	F 1/64	✓	F	DATE	DRAWN BY:	DWG SCALE:	Dwg
.X/X	F 0.03			3-2-95	K.L.	CB	001-260
.X/XX	F 0.10	ANGLES					
.X/XXX	F 0.05	P 10					

REQ'D	DESCRIPTION	PART NO.	ITEM
1	IDLER,INFEED,PAPER	620-017	1
1	SHAFT,IDLER,INFEED,PAPER	710-057	2
2	BEARING,FLANGE	026-105	3



This print is the property of PRO-TECH ENGR. The information thereon is remitted in confidence.						
UNLESS OTHERWISE SPECIFIED TOLERANCE			Pro-Tech Engineering 2117 N. Stoughton Rd. Madison, Wisconsin 53704 Phone (608) 246-8844 Fax (608) 246-8645			
DIM. AS SHOWN	TOL.	FINISH TO BE				
X/X	P 1/64	125√	TITLE: ASSEMBLY, IDLER, PAPER FALCON 36			
X.	P .050					
X.X	P .020					
X.XX	P .010		ANGLES P 1D	DATE: 6-23-95	DRAWN BY: RAS	DWG SCALE: A2
X.XXX	P .005					Dwg: 001-310

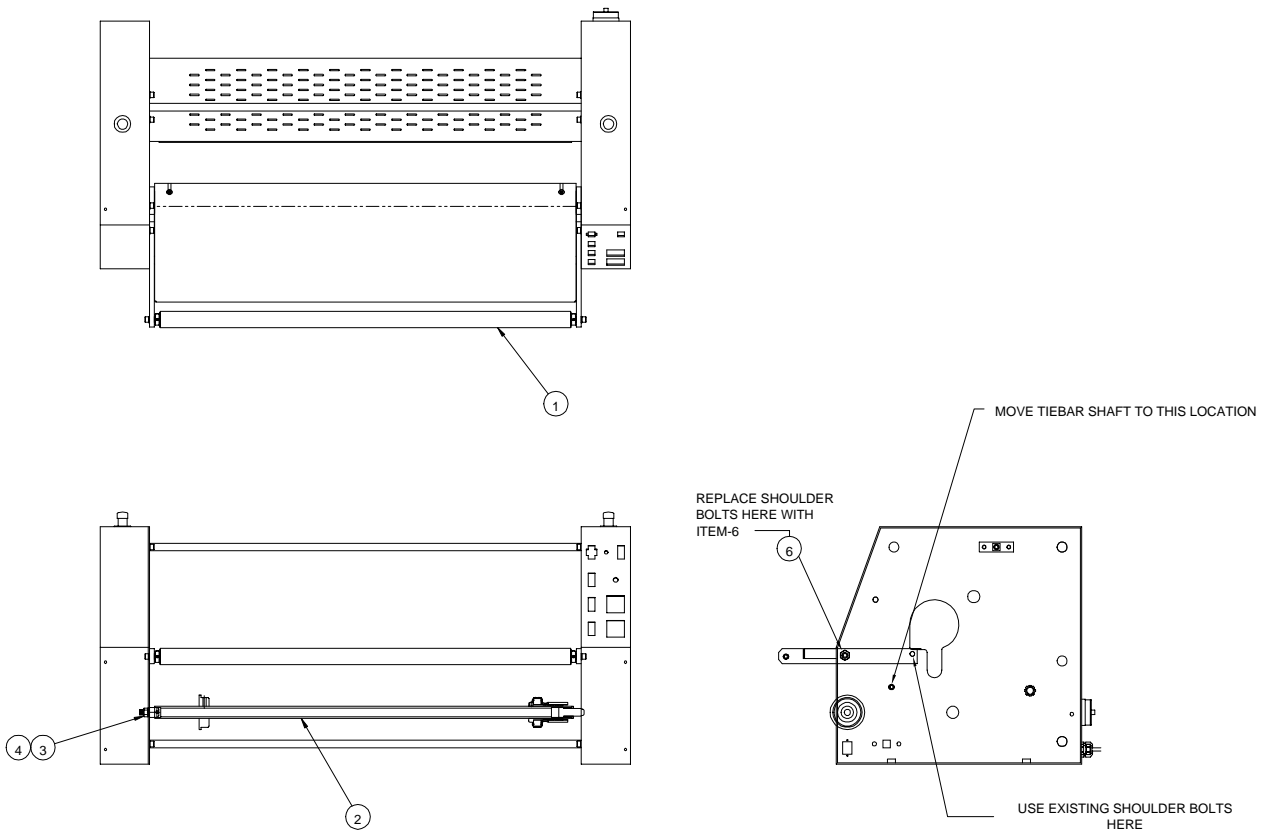
REQ'D	DESCRIPTION	PART NO.	ITEM
1	ASSEMBLY, IDLER, PAPER	001-310	1
2	BRACKET, MOUNTING, IDLER	510-141	2
2	SHCS, 3/8-16 X 1	-	3
2	WASHER, LOCK, 3/8	-	4



UNLESS OTHERWISE SPECIFIED		TOL.		FINISH		TITLE	
DR. AS	SPDRN			TO BE		Pro-Tech Engineering	
.XX	F .564			100		2117 N. Slaughter Rd., Madison, Wisconsin 53704	
.X	F .520			100		Phone (608) 248-6844 Fax (608) 248-5955	
.XX	F .520			100		ASSEMBLY, IDLER, INFEED, PAPER	
.XXX	F .510	ANGLES	DATE:	DRAWN BY:	DWG SCALE:	Dep:	001-311
.XXXX	F .505						

REQ'D	DESCRIPTION	PART NO.	ITEM
1	ASSEMBLY, IDLER, INFEED, PAPER	001-311	1
1	ASSEMBLY, REWIND	001-317	2
1	SHAFT, DUMMY	710-021	3
1	NUT, HEX, 1/2-13	-	4
2	SHCS 3/8-16 X 1.25		6

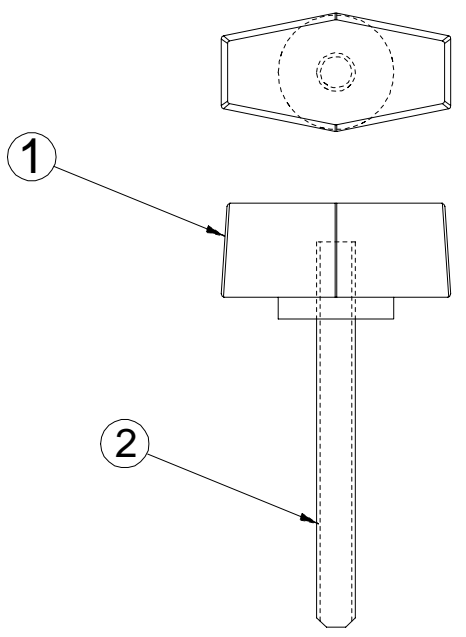
PROPRIETARY
 GBC PRO-TECH CLAIMS PROPRIETARY RIGHTS TO THE MATERIAL DISCLOSED ON THIS DRAWING. IT IS ISSUED IN CONFIDENCE FOR ENGINEERING INFORMATION ONLY AND SHALL NOT BE REPRODUCED, COPIED OR DISCLOSED IN WHOLE OR IN PART, OR USED FOR MANUFACTURE OR FOR ANY OTHER PURPOSE WITHOUT WRITTEN PERMISSION FROM GBC PRO-TECH



SHEET 1 OF 1		UNLESS OTHERWISE SPECIFIED TO EXCEPT		GBC PRO-TECH	
DM AS	TOL.	FRESH	4151 Anderson Road, DeForest, Wisconsin 53532	Phone (800) 248-8844 Fax (800) 248-8845	
SKETCH		TO BE	TITLE: ASSEMBLY, UNWIND, PAPER FALCON 36		
X	P. 156	125	DATE: 8-22-95	DRAWN BY: RAS	SCALE: 1/1
X.X	P. 691	✓	RELEASE	SIZE: C	Dep: 001-321
X.XXX	P. 610	ANGLES	P. 10		
X.XXXX	P. 605				

PROPRIETARY
 GBC PRO-TECH CLAIMS PROPRIETARY RIGHTS TO THE MATERIAL DISCLOSED ON THIS DRAWING. IT IS ISSUED IN CONFIDENCE FOR ENGINEERING INFORMATION ONLY AND SHALL NOT BE REPRODUCED, COPIED OR DISCLOSED IN WHOLE OR IN PART, OR USED FOR MANUFACTURE OR FOR ANY OTHER PURPOSE WITHOUT WRITTEN PERMISSION FROM GBC PRO-TECH

REQ'D	DESCRIPTION	PART NO.	ITEM
1	KNOB,CLAMP,FEMALE,1/4-20	465-008	1
1	SET SCREW 1/4-20 X 2 1/2 CUP POINT	050-030	2

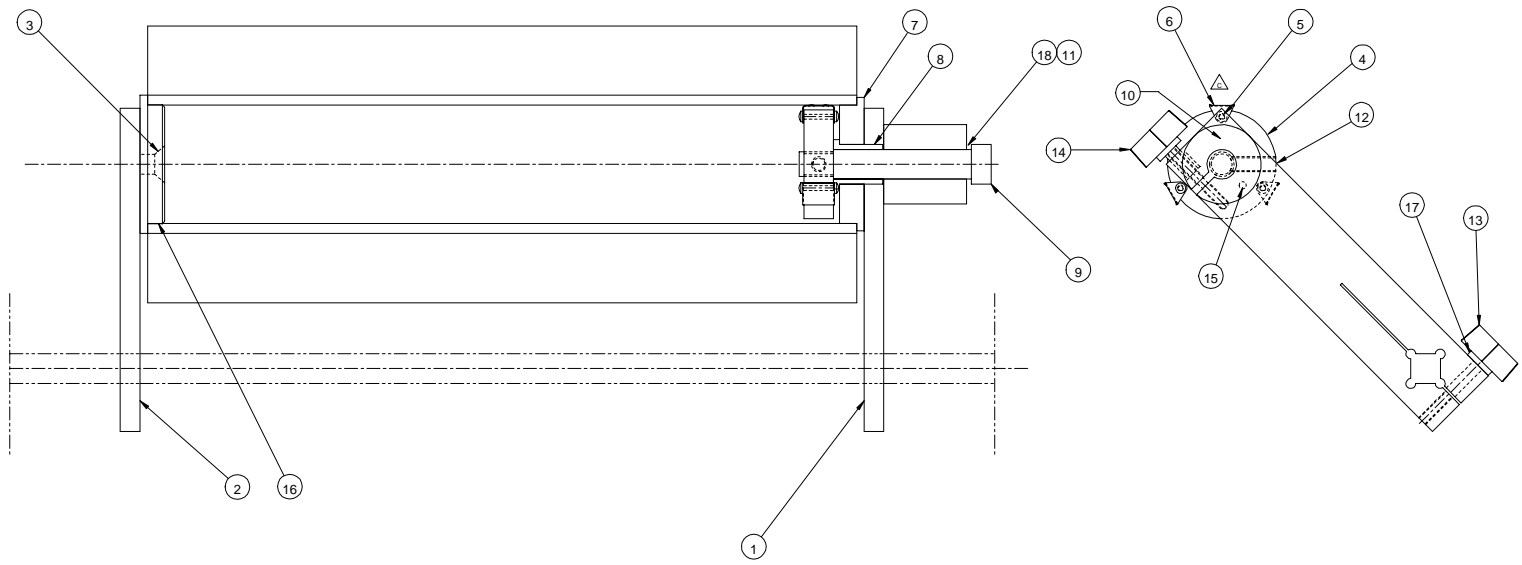


SHEET 1 OF			 4151 Anderson Road, DeForest, Wisconsin 53532 Phone (608) 246-8844 Fax (608) 246-8645			
UNLESS OTHERWISE SPECIFIED TOLERANCE						
DIM. AS SHOWN	TOL.	FINISH TO BE	TITLE: ASSEMBLY, KNOB, CLAMP FALCON 36			
X.X	P 1/64					
X.	P .050	125°	DATE: 10-30-95	DRAWN BY:	SCALE:	SIZE:
X.X	P .020		RELEASE NO.	RAS	A1	Dwg:
X.XX	P .010	ANGLES P 1D	001-332			
X.XXX	P .005					

		2577
MS	10-4-96	
REVISION		
	A	

REQ'D	DESCRIPTION	PART NO.	ITEM
1	BRACKET, MOUNTING, UNWIND, RIGHT	510-155	1
1	BRACKET, MOUNTING, UNWIND, LEFT	510-153	2
1	FHSCH, 1/2-13 X 1 1/4		3
1	CHUCK, CORE, QUICK RELEASE	530-028	4
6	SCREW, SELF-TAP, 6-32 X .38		5
3	GRIPPER, CORE	100-032	6
1	CHUCK, CORE	530-000	7
1	BUSH, BRNZ., .75, 1, 1.25 / FB1216-10	040-018	8
1	BOLT, SHLDR., .75, 3, 5/8-11		9
1	BRAKE, UNWIND	625-000	10
1	SPRING, WAVE, .75 / SSR-0100	089-106	11
1	SETSCREW, 3/8 - 16 X 3/8, BRASS TIP	050-022	12
2	ASSEMBLY, KNOB, CLAMP	001-332	13
1	ASSEMBLY, KNOB, CLAMP, BRAKE	001-131	14
1	PIN, DOWEL, 3/16 X .75	095-180	15
1	CHUCK, CORE	530-014	16
2	WASHER, FEND, 1/4 X 1/2	-	17
1	WASHER, THRUST/TRA-1220	032-291	18

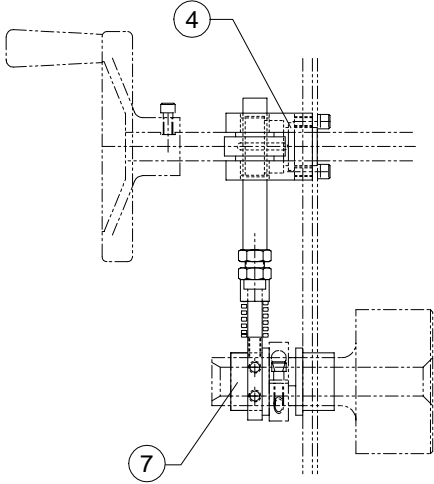
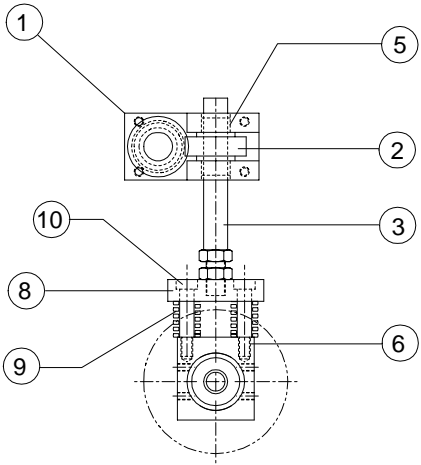
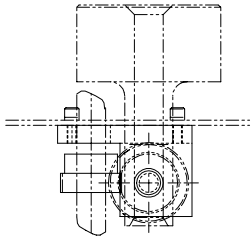
PROPRIETARY
 GBC PRO-TECH CLAIMS PROPRIETARY RIGHTS TO THE MATERIAL DISCLOSED ON THIS DRAWING. IT IS ISSUED IN CONFIDENCE FOR ENGINEERING INFORMATION ONLY AND SHALL NOT BE REPRODUCED, COPIED OR DISCLOSED IN WHOLE OR IN PART, OR USED FOR MANUFACTURE OR FOR ANY OTHER PURPOSE WITHOUT WRITTEN PERMISSION FROM GBC PRO-TECH



SHEET 1		UNLESS OTHERWISE SPECIFIED		GBC PRO-TECH	
4150 Technology Road, Chetek, Wisconsin		Phone (808) 246-8842 Fax (808) 246-8842		TITLE	
ASSEMBLY, UNWIND, UPPE		R		DATE	
10/27/95		DESIGN BY		SCALE	
RAS		C		SIZE	
001-335				WEIGHT	

QTY	3122	2577	2521	2500
UNIT	PCS	PCS	PCS	PCS
DESCRIPTION	C	B	A	
DATE				

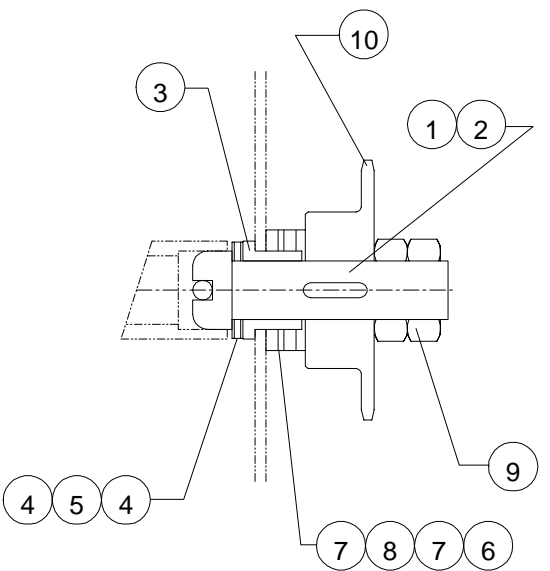
REQ'D	DESCRIPTION	PART NO.	ITEM
1	BLCK,GEAR	570-001	1
1	GEAR,HELI,RH,MOD	570-003	2
1	SCRW,ACME,MOD	645-001	3
1	BUSH,BRNZ,FLG,.75,1,.75 /FB1216-6	040-004	4
2	BUSH,BRZ,FLG,.62,.75,.50 /FB1012-4	040-001	5
1	BLK,BRG,ROLL,MAIN,UPR	501-003	6
1	BUSH,BRNZ,FLNG,1.25,1.5,1 /FB2024-8	040-009	7
1	BLOCK,SPRING,PLATE,BEARING	501-004	8
2	SPRING,COMPRESSION,536LBS/in	089-004	9
2	STRIP 3/8 x 1 1/4	-	10



PROPRIETARY
 GBC PRO-TECH CLAIMS PROPRIETARY RIGHTS TO THE MATERIAL DISCLOSED ON THIS DRAWING. IT IS ISSUED IN CONFIDENCE FOR ENGINEERING INFORMATION ONLY AND SHALL NOT BE REPRODUCED, COPIED OR ENCLOSED IN WHOLE OR IN PART, OR USED FOR MANUFACTURE OR FOR ANY OTHER PURPOSE WITHOUT WRITTEN PERMISSION FROM GBC PRO-TECH

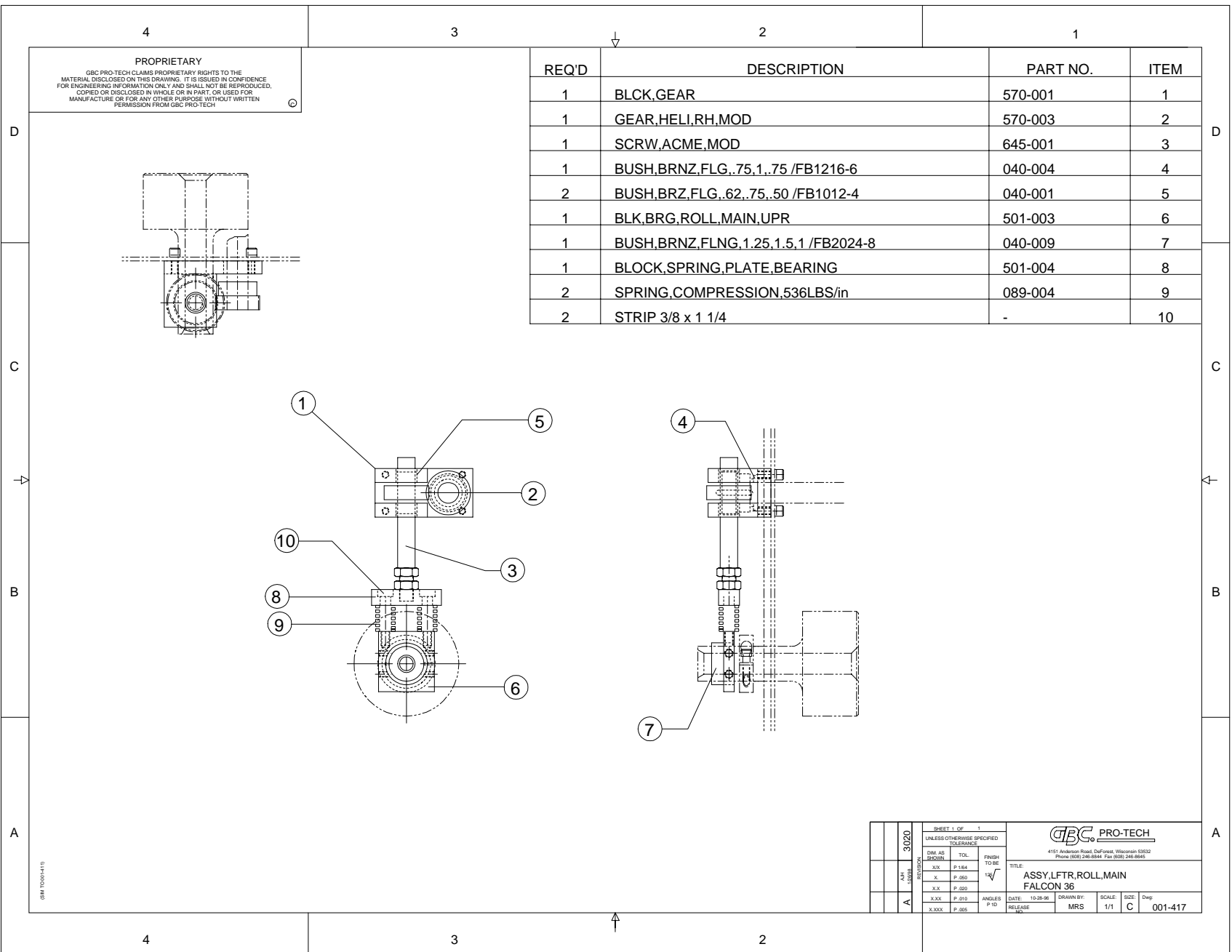
SHEET 1 OF 1		UNLESS OTHERWISE SPECIFIED TOLERANCE			
DIM AS SHOWN	TOL.	FINISH TO BE		4111 Avenida Real, California Woodside 94062 Phone (800) 248-8844 Fax (650) 248-8646	
XX	P.184	✓		TITLE:	
X	P.050			ASSY,LFTR,ROLL,MAIN	
XX	P.020			FALCON 36	
XXX	P.010	DATE:	8-28-93	DRAWN BY:	RAS
XXXX	P.005	ANGLE:	P.10	SCALE:	1/1
		RELEASE:		SIZE:	C
				DWG:	001-411

REQ'D	DESCRIPTION	PART NO.	ITEM
1	SHAFT,DRIVE,REWIND,FALCON	710-008	1
1	KEY,3/16 X .62	-	2
1	BUSH,BRONZE,.75 X 1 X .75 /FB1216-6	040-004	3
2	WASHER,THRUST,.75 X .030 /TRA-1220	032-291	4
1	BEARING,THRUST,.75 /NTA-1220	032-292	5
1	WASHER,THRUST,1 X .153 /TRE-1625	032-310	6
2	WASHER,THRUST,1 X .125 /TRD-1625	032-300	7
1	BEARING,THRUST, 1 /NTA-1625	032-190	8
2	NUT,JAM,HEX, 3/4-16	-	9
1	SPROCKET,35,25T,.75 /BS35-26 3/4	435-260	10

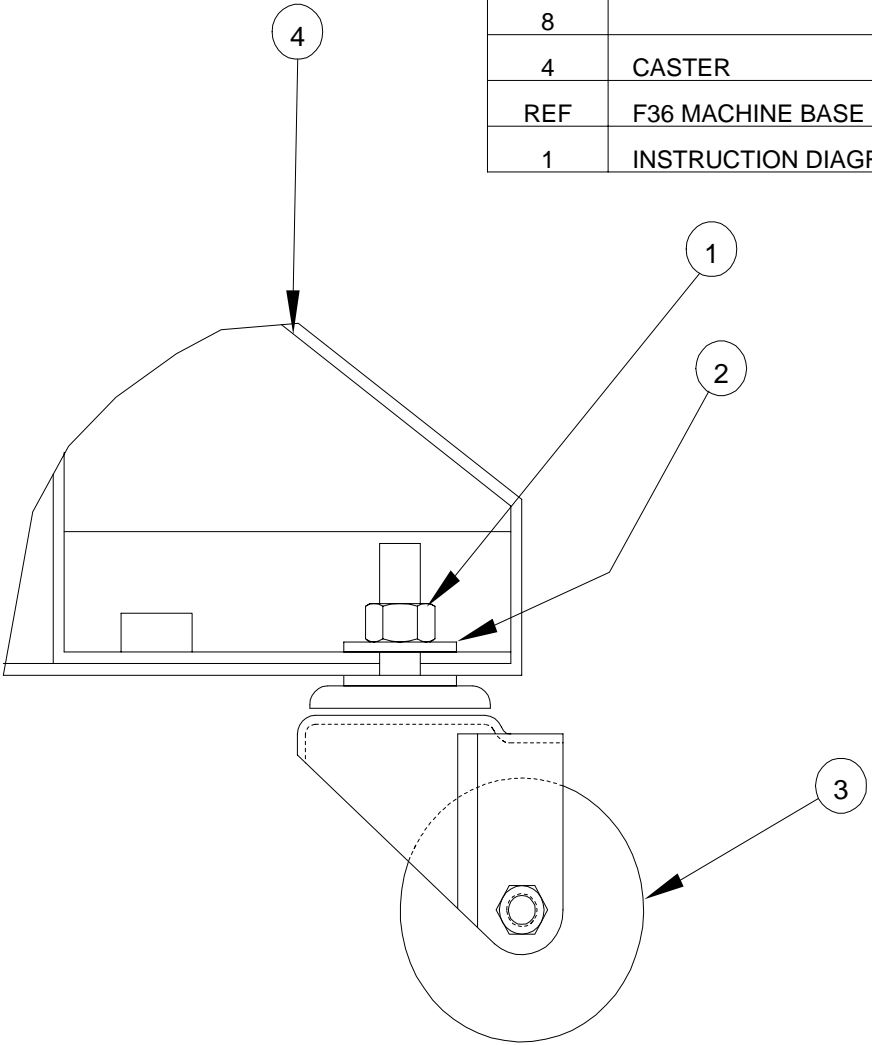


PROPRIETARY
 GBC PRO-TECH CLAIMS PROPRIETARY RIGHTS TO THE MATERIAL DISCLOSED ON THIS DRAWING. IT IS ISSUED IN CONFIDENCE FOR ENGINEERING INFORMATION ONLY AND SHALL NOT BE REPRODUCED, COPIED OR DISCLOSED IN WHOLE OR IN PART, OR USED FOR MANUFACTURE OR FOR ANY OTHER PURPOSE WITHOUT WRITTEN PERMISSION FROM GBC PRO-TECH

3110	2638	SHEET 1 OF 1			 4151 Anderson Road, DeForest, Wisconsin 53532 Phone (608) 246-8844 Fax (608) 246-8645				
		UNLESS OTHERWISE SPECIFIED TOLERANCE							
BJT	MS	REVISION	DIM. AS SHOWN	TOL.	FINISH TO BE	TITLE: ASSY, SPROCKET, FALCON			
5-14-98	1-13-97		X.X	P 1/64	125√	DATE: 10-17-96			
			X.X	P .050		DRAWN BY: MS			
			X.X	P .020		SCALE: 1/1			
B	A		X.XX	P .010	ANGLES P 1D	SIZE: A			
			X.XXX	P .005		Dwg: 001-412			
RELEASE NO.									



REQ'D	DESCRIPTION	PART NO.	ITEM
4	1/2-13 HEX NUT #36510	-	1
8			2
4	CASTER	470-007	3
REF	F36 MACHINE BASE	-	4
1	INSTRUCTION DIAGRAM, CASTER MOUNT, F36	820-073	5



NOTES:
 1. ASSEMBLY PARTS LOOSELY SO THAT NUT CAPTURES WASHERS.
 2. BAG EACH CASTER ASSEMBLY SEPARATELY.
 3. MARK ASSEMBLY NUMBER ON EACH BAGGED CASTER.

SHEET 2101 OF 1		GBC PRO-TECH	
UNLESS OTHERWISE SPECIFIED TOLERANCE		4151 Anderson Road, DeForest, Wisconsin 53532 Phone (608) 246-8844 Fax (608) 246-8645	
DIM. AS SHOWN	TOL.	FINISH TO BE	TITLE:
XX	F 1/64	125/√	ASSY, LARGE CASTERS, F36 BPICS9300079
X.	F .050		
X.X	F .020	ANGLES P 1 D	DATE: 7/1/88
X.XX	F .010	RELEASE NO	2101
X.XXX	F .005	DRAWN BY:	AJH
		SCALE:	1:1
		SIZE:	C
		Dwg:	001-526