

---

***DS 60 CE***  
***Illustrated Parts Booklet***  
***( 000 - 070 )***

---

---

© GBC Films Group, December 2000  
Do not duplicate without written permission

**Booklet #: DS60CEPB001**

**GBC Films Group**  
**4151 Anderson Road**  
**DeForest, WI 53532**  
**Ph: ( 608 ) 246 - 8844**  
**Fx: ( 608 ) 246 - 8645**

---

**Links to Content**

<b>Drawing number :</b>	<b>Drawing Title:</b>	<b>Page number:</b>
<b>070 - 01.1</b>	<b>Stand assembly</b>	<b>1 - 1</b>
<b>070 - 01.2</b>	<b>Front and rear view</b>	<b>1 - 2</b>
<b>070 - 02.0</b>	<b>Drive side</b>	<b>1 - 3</b>
<b>070 - 03.0</b>	<b>Control side</b>	<b>1 - 4</b>
<b>070 - 04.1</b>	<b>Control side - electrical</b>	<b>1 - 5</b>
<b>070 - 04.2</b>	<b>Drive side - electrical</b>	<b>1 - 6</b>
<b>070 - 05.1</b>	<b>Electrical panel assembly 001-539</b>	<b>1 - 7</b>
<b>070 - 05.2</b>	<b>Wire assembly</b>	<b>1 - 8</b>
<b>070 - 06.1</b>	<b>Cabinets and decals</b>	<b>1 - 9</b>
<b>070 - 06.2</b>	<b>E-stops and control panel</b>	<b>1 - 10</b>

**Drawing number :**

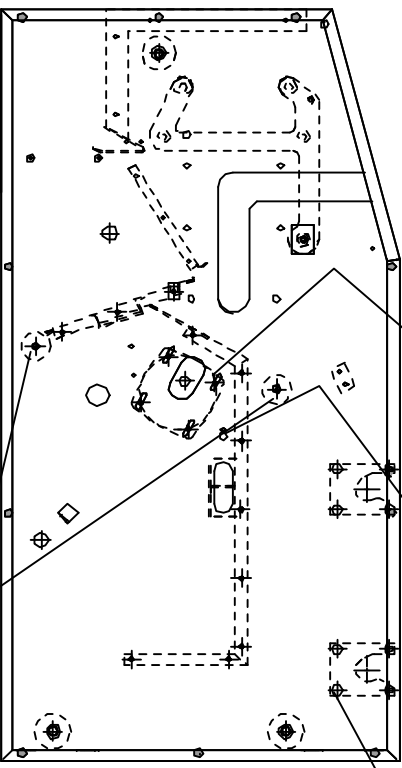
**Drawing Title:**

**Page number:**

---

**This page intentionally left blank.**

**PROPRIETARY**  
 GBC PRO-TECH CLAIMS PROPRIETARY RIGHT TO THE  
 MATERIAL DISCLOSED IN THIS DRAWING. THIS IS A CONFIDENTIAL  
 DOCUMENT. NO PART OF THIS DRAWING IS TO BE REPRODUCED,  
 COPIED, OR DISCLOSED IN ANY MANNER WITHOUT THE WRITTEN  
 PERMISSION OF GBC PRO-TECH.

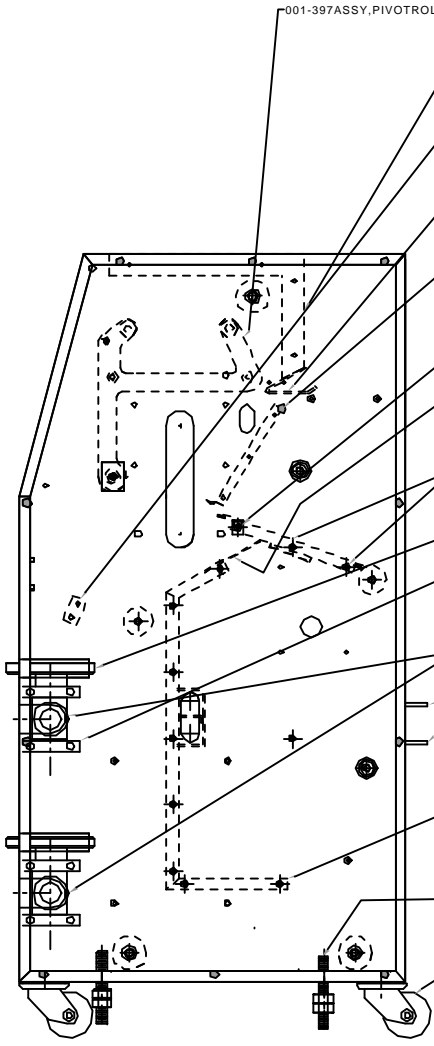
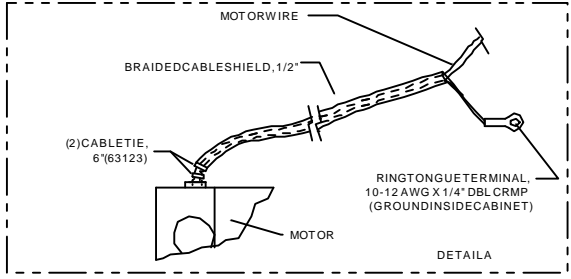


- (2) 001-394 IDLER ASSEMBLY
- (4) SHCS 3/8-16 x 3/4 (23303)
- (4) 3/8 LOCK WASHER (33688)
- APPLY LOC-TITE-BLUE

- 425-003 MOTOR (SHIELD MOTOR WIRE WITH 1/2" BRAIDED CABLE SHIELD. SEE DETAIL A.)
- (4) SHCS 1/4-20 X 3/4 (23203)
- (4) FLAT WASHER 1/4" (33004)
- (4) 1/4 LOCK WASHER (33686)
- APPLY LOC-TITE-BLUE

- 175-000 GROMMET FOR MOTOR WIRE

- (2) 700-009 SADDLE
- (8) SHCS 3/8-16 X 1 (23305)
- (2) 086-100 CLEVIS PIN



- 001-397 ASSY, PIVOT ROLLS
- 585-081 GUARD, TOP
- (8) BHCS 1/4-20 X 3/4
- (8) NYLOC NUT 1/4-20
- (8) FLAT WASHER #12

- (2) 465-030 BUMPER
- (4) SHCS 1/4-20 X 5/8 (24050)
- (4) NYLOC NUT 1/4-20 (37018)

- 585-016 GUARD, INFEED
- (5) BHCS 1/4-20 X 5/8
- (5) NYLOC NUT 1/4-20
- (5) FLAT WASHER #12

- 585-078 GUARD, BRIDGE
- (6) SHCS 1/4-20 X 3/4
- (6) NYLOC NUT 1/4-20
- (6) FLAT WASHER #12

- (2) 175-008 STANDOFF, PAN-POLE
- (2) BHCS 1/4-20 X 1/2 (24049)

- 585-079 GUARD, BRIDGE
- (3) SHCS #8-32 X 1/2
- (3) NYLOC NUT #8-32
- (3) FLAT WASHER #8

- 520-054 REAR TABLE
- (4) BHCS 1/4-20 X 5/8 (24050)
- APPLY LOC-TITE-BLUE

- (2) 001-396 ASSEMBLY, BRAKE

- (4) 510-223 UNW IND CLEVIS
- (2) 032-230 THRUST WASHER
- (12) BHCS 1/2-13 X 3/4 (24107)
- APPLY LOC-TITE-BLUE

- (2) 290-660 LOCK COLLAR

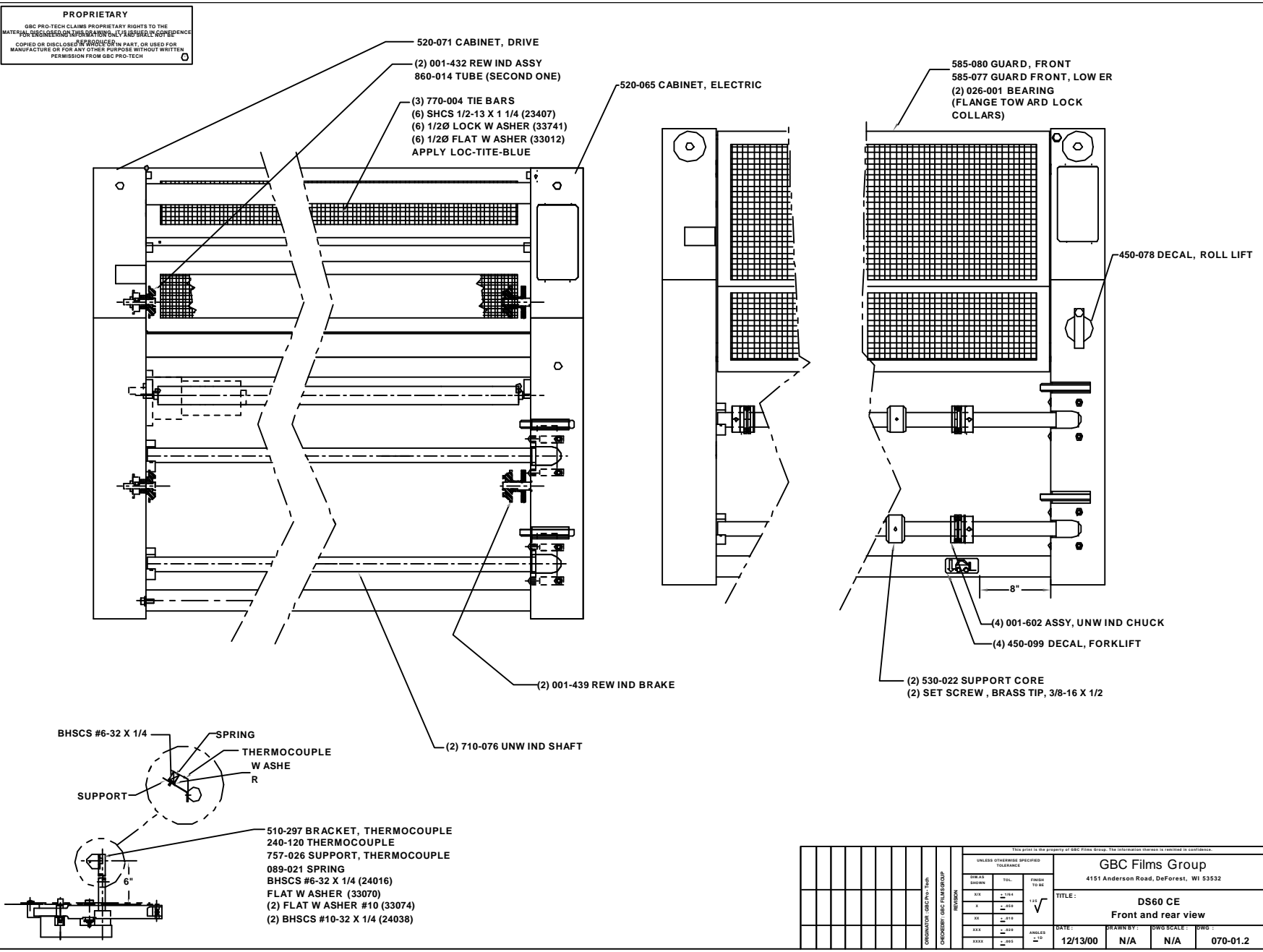
- (2) 465-015 PULL HANDLE
- (4) SHCS #10-32 X 1/2 (23164)
- (4) #10 LOCK WASHER (33684)
- APPLY LOC-TITE-BLUE

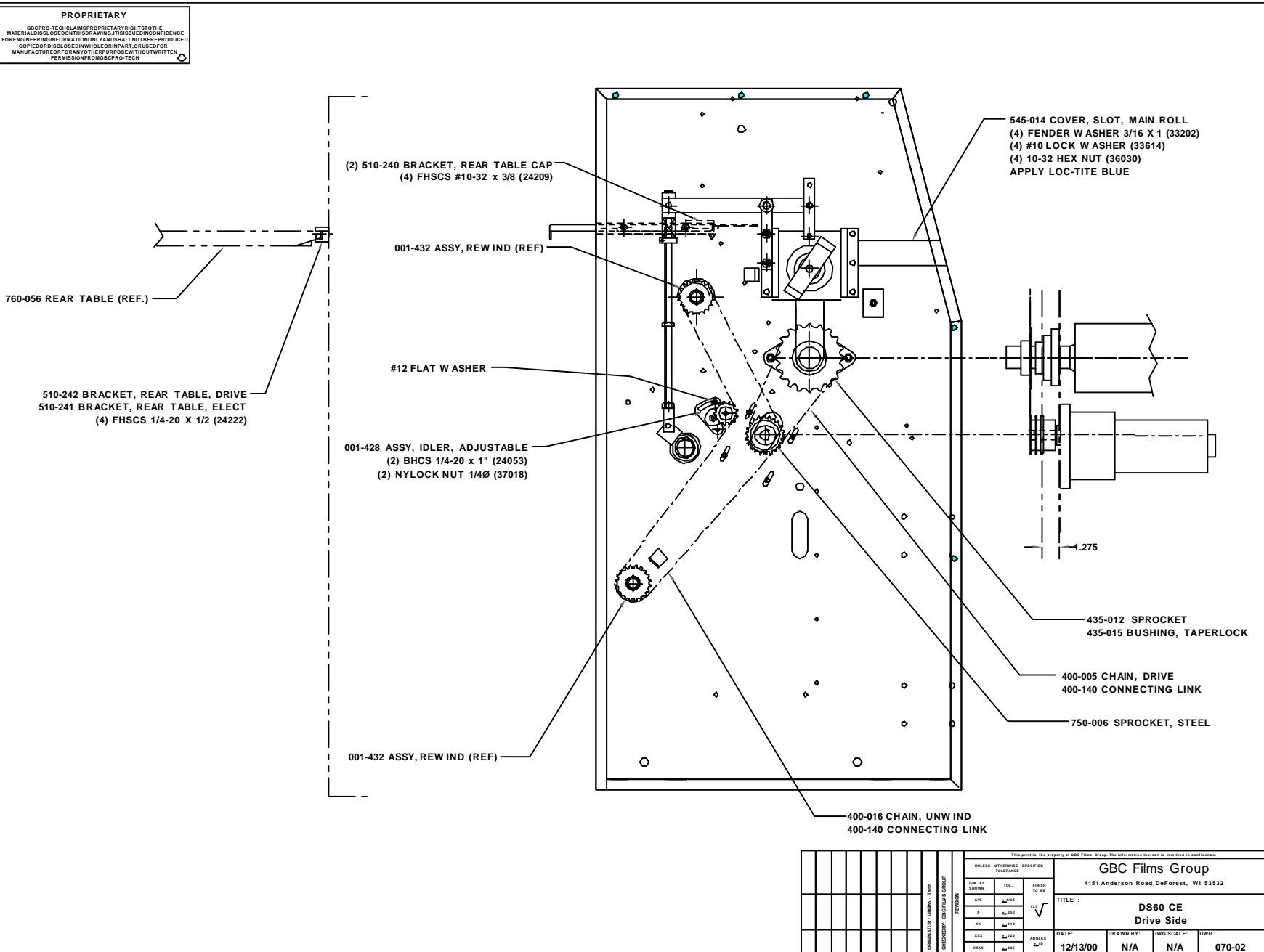
- 520-068 BRIDGE
- (18) BHCS 1/4-20 X 3/8 (24048)
- APPLY LOC-TITE-BLUE

- (4) 645-011 THREADED ROD
- (8) HEX NUT 3/4-10 (36116)

- (4) 470-130 CASTORS
- APPLY LOC-TITE-BLUE


UNLESS OTHERWISE SPECIFIED TOLERANCE				THIS PRINT IS THE PROPERTY OF GBC FILMS GROUP. THE INFORMATION IS IN STRICTLY CONFIDENTIAL.			
DIM AS SHOWN	TOL.	FINISH TO BE		GBC Films Group 4151 Anderson Road, DeForest, WI 53532			
XIV	±.004		1:1	TITLE : <b>DS60 CE Stand assembly</b>			
X	±.005			DATE: 12/13/00			
XX	±.010			DRAWN BY: N/A			
XXX	±.020			DWG SCALE: N/A			
XXXX	±.050			DWG: 070-01-1			

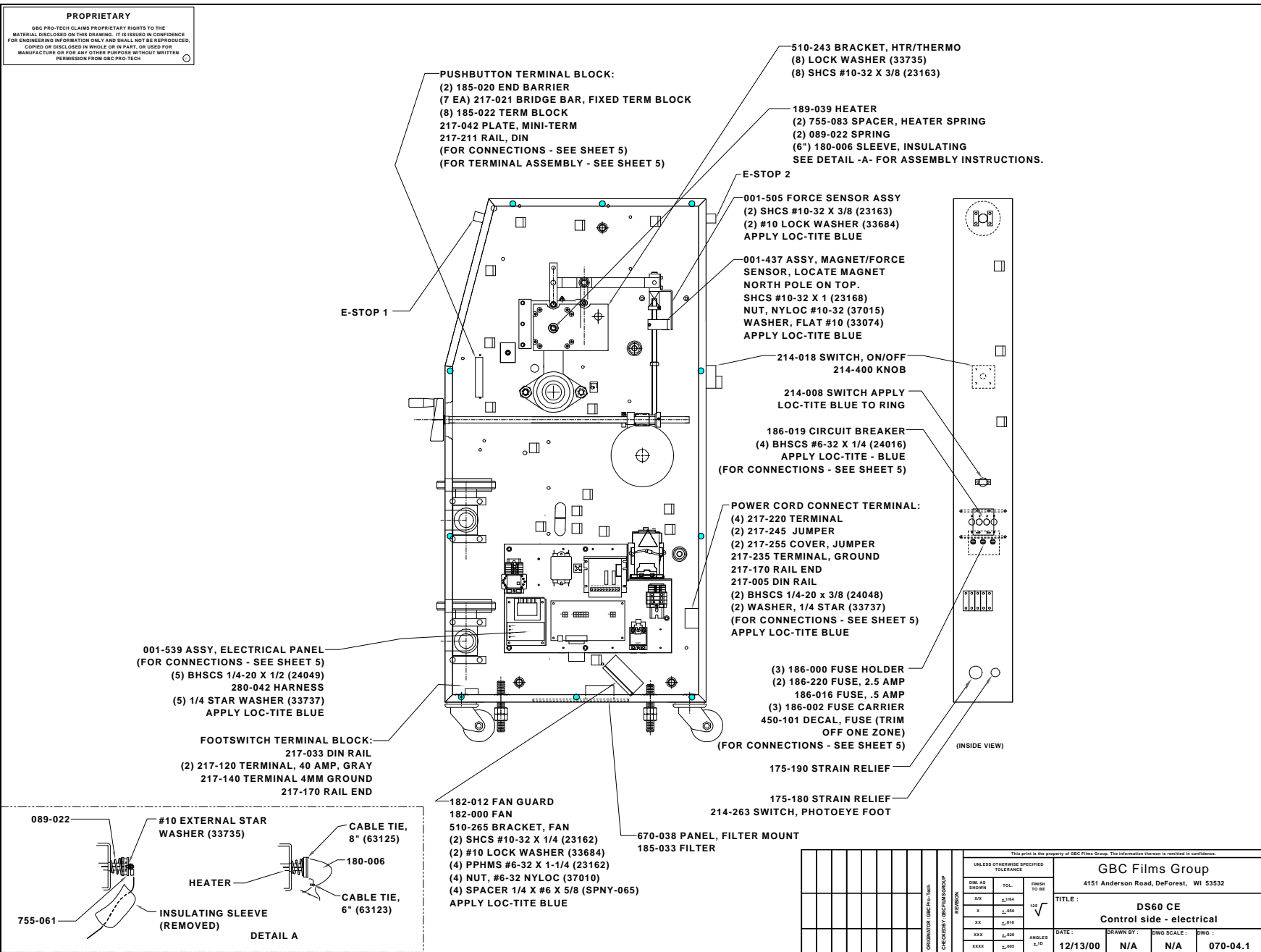




**PROPRIETARY**  
 GBCPRO-TECH CLAIMS PROPRIETARY RIGHT TO THE MATERIAL DISCLOSED IN THIS DRAWING. THIS INFORMATION IS FOR ENGINEERING INFORMATION ONLY AND SHALL NOT BE REPRODUCED, COPIED, OR DISCLOSED IN ANY MANNER, OR USED FOR MANUFACTURE OR FOR ANY OTHER PURPOSE WITHOUT WRITTEN PERMISSION FROM GBCPRO-TECH.

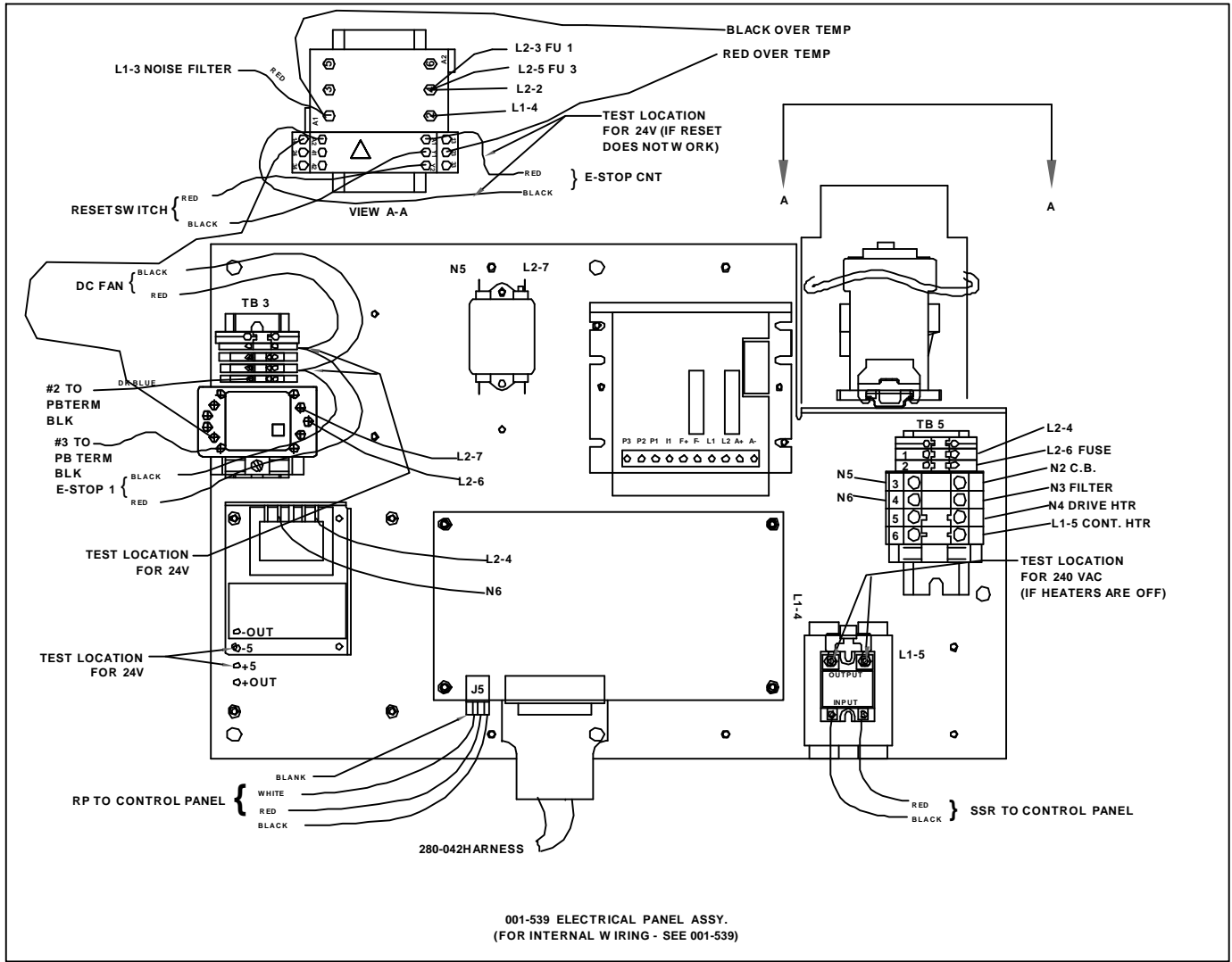
UNLESS OTHERWISE SPECIFIED TOLERANCES				GBC Films Group 4151 Anderson Road, DeForest, WI 53532			
SIZE AS SHOWN	TOL.	FINISH	TO BE	TITLE: DS60 CE Drive Side			
Ø	±.004	11.5	✓	DATE:	DRAWN BY:	DWG SCALE:	DWG:
Ø	±.005			12/13/00	N/A	N/A	070-02
Ø	±.010						
Ø	±.015						
Ø	±.020						
Ø	±.030						
Ø	±.040						







**PROPRIETARY**  
 GBC FILM TECH CLAIMS PROPRIETARY RIGHTS TO THE MATERIALS DISCLOSED IN THIS DRAWING. IT IS SUBJECT TO CONFIDENTIALITY AND SHALL NOT BE REPRODUCED, COPIED, OR DISCLOSED IN WHOLE OR IN PART, OR USED FOR MANUFACTURE OR FOR ANY OTHER PURPOSE WITHOUT WRITTEN PERMISSION FROM GBC FILM TECH.

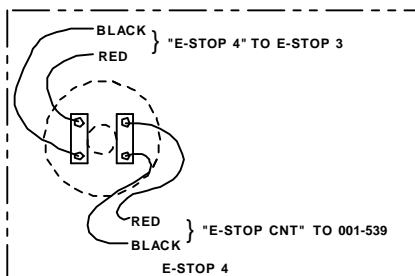
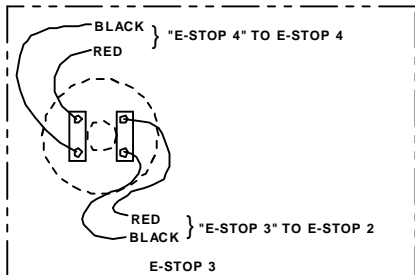
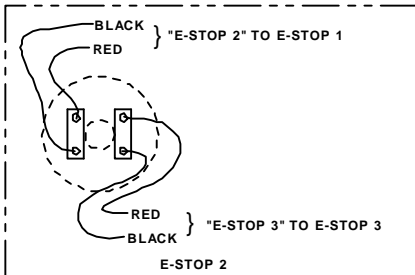
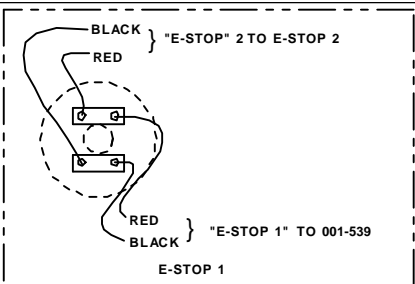


001-539 ELECTRICAL PANEL ASSY.  
 (FOR INTERNAL WIRING - SEE 001-539)

UNLESS OTHERWISE SPECIFIED TOLERANCE			GBC Films Group 4151 Anderson Road, DeForest, WI 53532	
SIZE	TOL.	FRACTION	TITLE : DS60 CE	
1/16	±.004	1/16	Electrical panel assembly 001-539	
1/8	±.005	1/8	DATE : 12/13/00	DRAWN BY : N/A
3/16	±.006	3/16	DWG SCALE : N/A	DWG : 070-05.1
1/2	±.010	1/2	ANGLES : 10°	
3/4	±.012	3/4		
1	±.015	1		
1 1/2	±.020	1 1/2		
2	±.025	2		
3	±.030	3		
4	±.035	4		
5	±.040	5		
6	±.045	6		
8	±.050	8		
10	±.055	10		
12	±.060	12		
15	±.070	15		
20	±.080	20		
25	±.090	25		
30	±.100	30		
40	±.120	40		
50	±.150	50		
60	±.180	60		
80	±.200	80		
100	±.250	100		

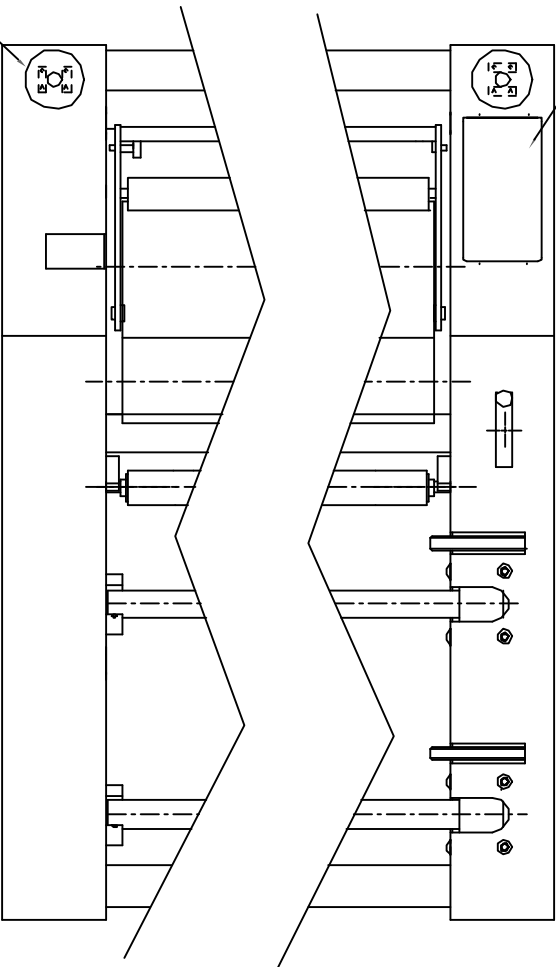






001-538 ASSY. CONTROL PANEL  
 (FOR CONNECTIONS - SEE SHEET 5)  
 (FOR ADJUSTMENT PROCEDURE  
 - SEE 820-067)  
 (4) BHSCS #8-32 X 3/8 (24023)

(4) 450-098 DECAL, E-STOP  
 (4) 214-313 PUSHBUTTON, E-STOP  
 (8) 214-314 CONTACT BLOCK, E-STOP (2 PER SWITCH)  
 (FOR CONNECTIONS - SEE SHEET 5)



**PROPRIETARY**  
 GBCPRO-TECH CLAIMS PROPRIETARY RIGHTS TO THE  
 MATERIALS, DESIGN, DRAWING, IT IS SUBJECT TO CONFIDENCE  
 FOR ENGINEERING INFORMATION ONLY AND SHALL NOT BE REPRODUCED,  
 COPIED OR DISCLOSED IN WHOLE OR IN PART, OR USED FOR  
 MANUFACTURE OF GOODS WITHOUT THE WRITTEN  
 PERMISSION FROM GBCPRO-TECH

UNLESS OTHERWISE SPECIFIED TOLERANCE				GBC Films Group 4151 Anderson Road, DeForest, WI 53532			
FINISH	TOL.	FINISH TO BE	1/16"	TITLE: DS60 CE E-stops and control panel			
AS SHOWN	±.0004			DATE: 12/13/00	DRAWN BY: N/A	DWG SCALE: N/A	DWG: 070-06.2
XX	±.0010						
XX	±.0015						
XXX	±.0020						
XXXX	±.0025						