






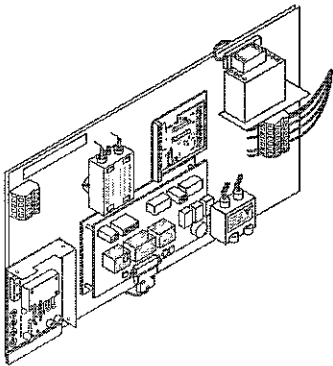
DS 60 Heat Press Parts List


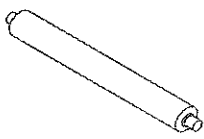


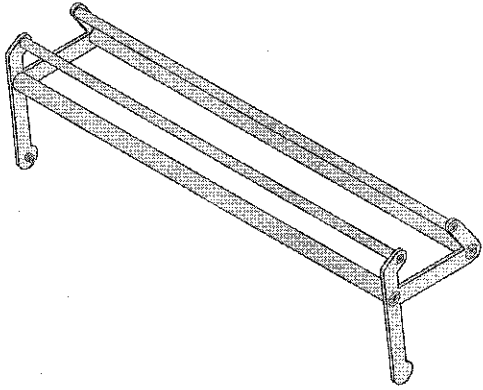


GBC IS AN ACCO BRANDS COMPANY

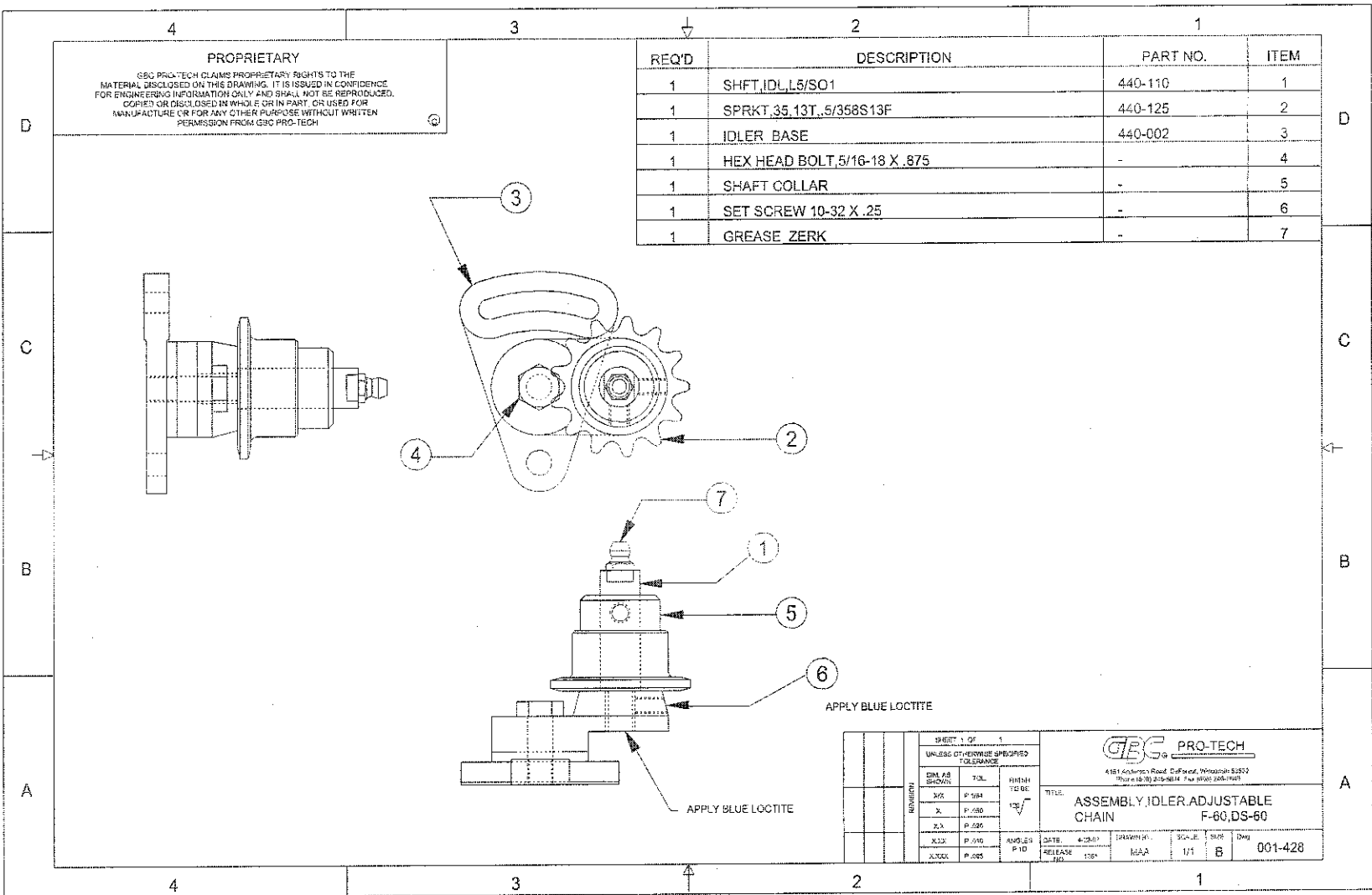


Section 9: Illustrated Parts List

<p>Accessory Pack <i>See page 3-4 for the list of included accessories.</i></p>	<p>001-540</p>
<p>Adjustable Chain Idler Assembly</p> 	<p>001-428 (Assembly on page 9-4)</p>
<p>Brake Assembly</p> 	<p>001-396 (Assembly on page 9-5)</p>
<p>Drive Rewind Assembly</p> 	<p>001-432 (Assembly on page 9-6)</p>
<p>Electrical Panel Assembly</p> 	<p>001-539 (Assembly on page 9-7)</p>

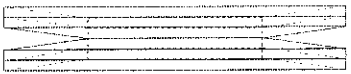
<p>Front Panel Assembly</p> 	<p>001-538 (Assembly on page 9-8)</p>
<p>Idler Assembly, 65"</p> 	<p>001-394 (Assembly on page 9-9)</p>
<p>Machine Assembly Chain Drive</p>	<p>070-02 (Assembly on page 9-10)</p>
<p>Machine Assembly Electrical</p>	<p>070-04 (A), 070-04 (B), 070-04 (C) (Assemblies on pages 9-11, 9-12 and 9-13)</p>
<p>Machine Assembly Electrical Connections</p>	<p>070-05 (A), 070-05 (B), 070-05 (C) (Assemblies on pages 9-14, 9-15 and 9-16)</p>
<p>Machine Assembly Final</p>	<p>070-06 (A), 070-06 (B) (Assembly on pages 9-17 and 9-18)</p>
<p>Machine Assembly Rolls Mount</p>	<p>070-03 (A), 070-03 (B) (Assemblies on pages 9-19 and 9-20)</p>
<p>Machine Assembly Stand Parts</p>	<p>070-01 (A), 070-01 (B) (Assemblies on pages 9-21 and 9-22)</p>

<p>Pivot Rolls Assembly</p> 	<p>001-397 (Assembly on page 9-23)</p>
<p>Rewind Brake</p> 	<p>001-439 (Assembly on page 9-24)</p>
<p>Thermocouple Support Kit</p> 	<p>005-024 (Assembly on page 9-25)</p>

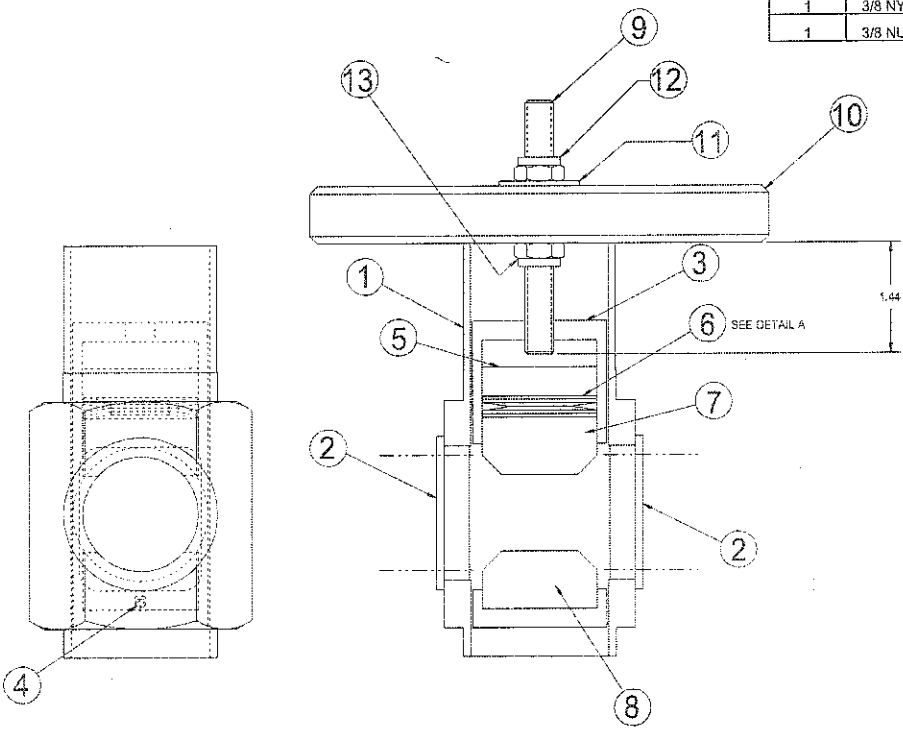


REQ'D	DESCRIPTION	PART NO.	ITEM
1	PIN, PIVOT, UNWIND	625-008	1
2	BUSHING, FLANGE, NYLON	500-006	2
1	HOUSING, BRAKE	625-022	3
1	ROLL PIN, 1/8 X 1-3/4	095-105	4
1	PISTON, BRAKE	625-019	5
4	SPRING, DISC, 3/4 X 1-1/2	089-009	6
1	PAD, BRAKE, TOP	625-020	7
1	PAD, BRAKE, BOTTOM	625-021	8
1	STUD	645-024	9
1	UNWIND DIAL	625-018	10
1	3/8 WASHER	STK	11
1	3/8 NYLOC NUT	STK	12
1	3/8 NUT	STK	13

PROPRIETARY
 GBC PRO-TECH CLAIMS PROPRIETARY RIGHTS TO THE MATERIAL DISCLOSED ON THIS DRAWING. IT IS ISSUED IN CONFIDENCE FOR ENGINEERING INFORMATION ONLY AND SHOULD NOT BE REPRODUCED, COPIED OR DISCLOSED IN ANY MANNER OR USED FOR MANUFACTURE OR FOR ANY OTHER PURPOSE WITHOUT WRITTEN PERMISSION FROM GBC PRO-TECH.

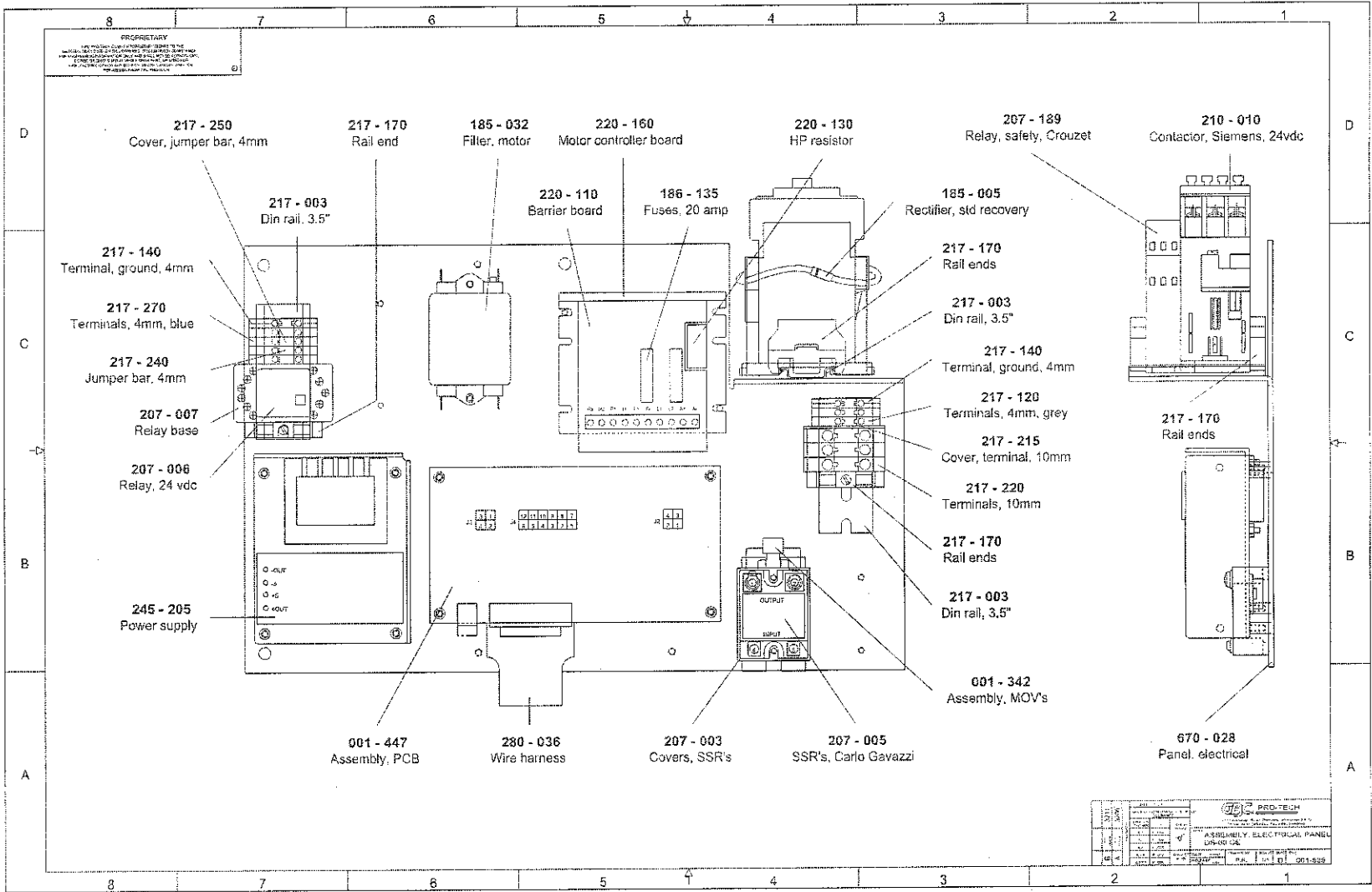


UDETAIL A
 DISC SPRING ORIENTATION
 3X SCALE

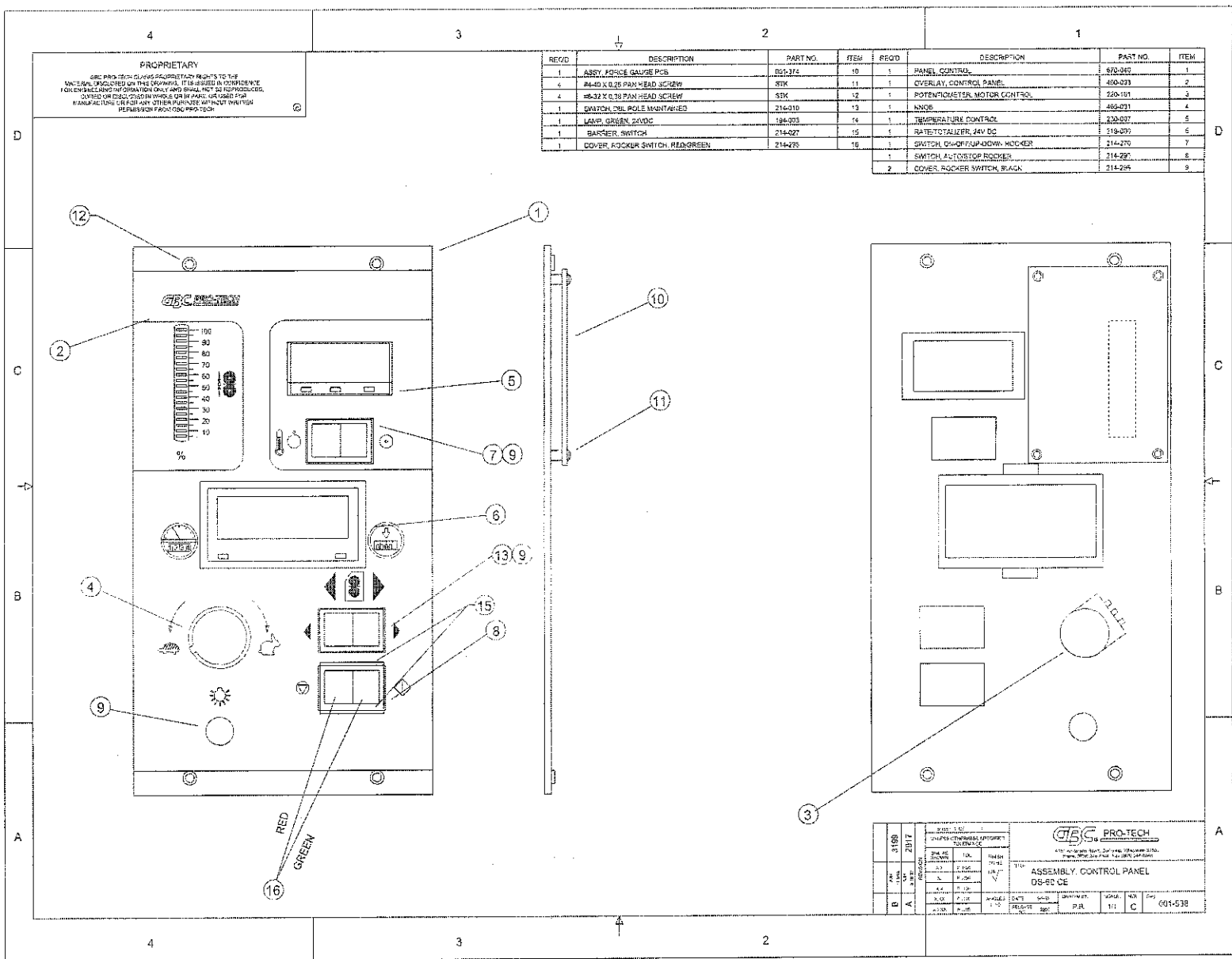


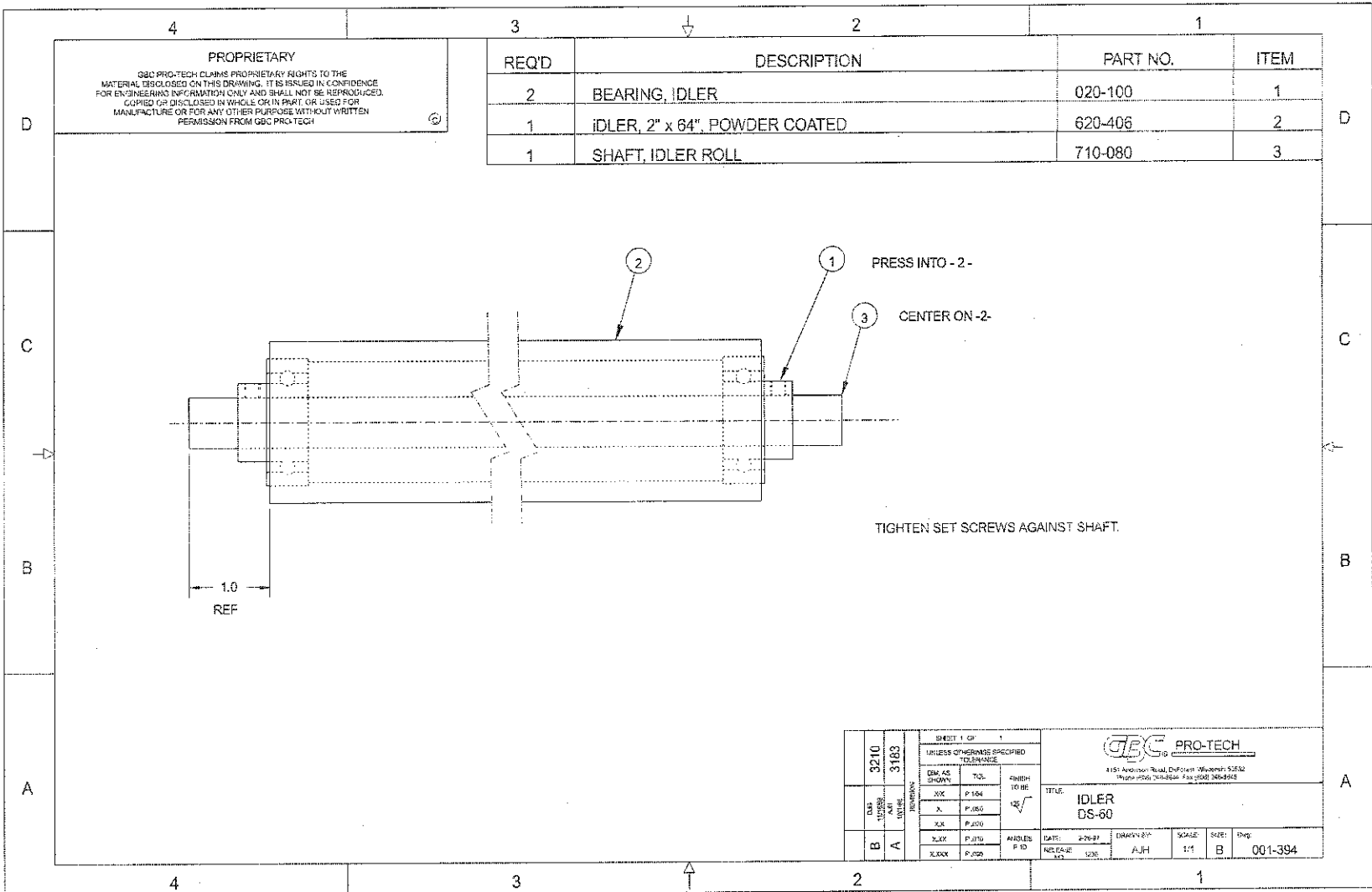
APPLY ANTI-SIEZE COMPOUND

SHEET 1 OF 1		UNLESS OTHERWISE SPECIFIED DIMENSIONS ARE IN INCHES		 4155 Galloway Road, Dayton, Ohio 45424-1232 Phone: 937-233-8888 Fax: 937-233-8889	
DATE	REV	BY	CHKD	TITLE: ASSEMBLY, BRAKE DS-60, F-60	
01/10/00	1	J. B. B.	J. B. B.	SCALE	SIZE
				1/1	C
				DRG	001-336



PRO-TECH	
REV	DESCRIPTION
1	ASSEMBLY ELECTRICAL PANEL DS4602
2	REVISED
3	REVISED
4	REVISED
5	REVISED
6	REVISED
7	REVISED
8	REVISED
9	REVISED
10	REVISED
11	REVISED
12	REVISED
13	REVISED
14	REVISED
15	REVISED
16	REVISED
17	REVISED
18	REVISED
19	REVISED
20	REVISED
21	REVISED
22	REVISED
23	REVISED
24	REVISED
25	REVISED
26	REVISED
27	REVISED
28	REVISED
29	REVISED
30	REVISED
31	REVISED
32	REVISED
33	REVISED
34	REVISED
35	REVISED
36	REVISED
37	REVISED
38	REVISED
39	REVISED
40	REVISED
41	REVISED
42	REVISED
43	REVISED
44	REVISED
45	REVISED
46	REVISED
47	REVISED
48	REVISED
49	REVISED
50	REVISED
51	REVISED
52	REVISED
53	REVISED
54	REVISED
55	REVISED
56	REVISED
57	REVISED
58	REVISED
59	REVISED
60	REVISED
61	REVISED
62	REVISED
63	REVISED
64	REVISED
65	REVISED
66	REVISED
67	REVISED
68	REVISED
69	REVISED
70	REVISED
71	REVISED
72	REVISED
73	REVISED
74	REVISED
75	REVISED
76	REVISED
77	REVISED
78	REVISED
79	REVISED
80	REVISED
81	REVISED
82	REVISED
83	REVISED
84	REVISED
85	REVISED
86	REVISED
87	REVISED
88	REVISED
89	REVISED
90	REVISED
91	REVISED
92	REVISED
93	REVISED
94	REVISED
95	REVISED
96	REVISED
97	REVISED
98	REVISED
99	REVISED
100	REVISED

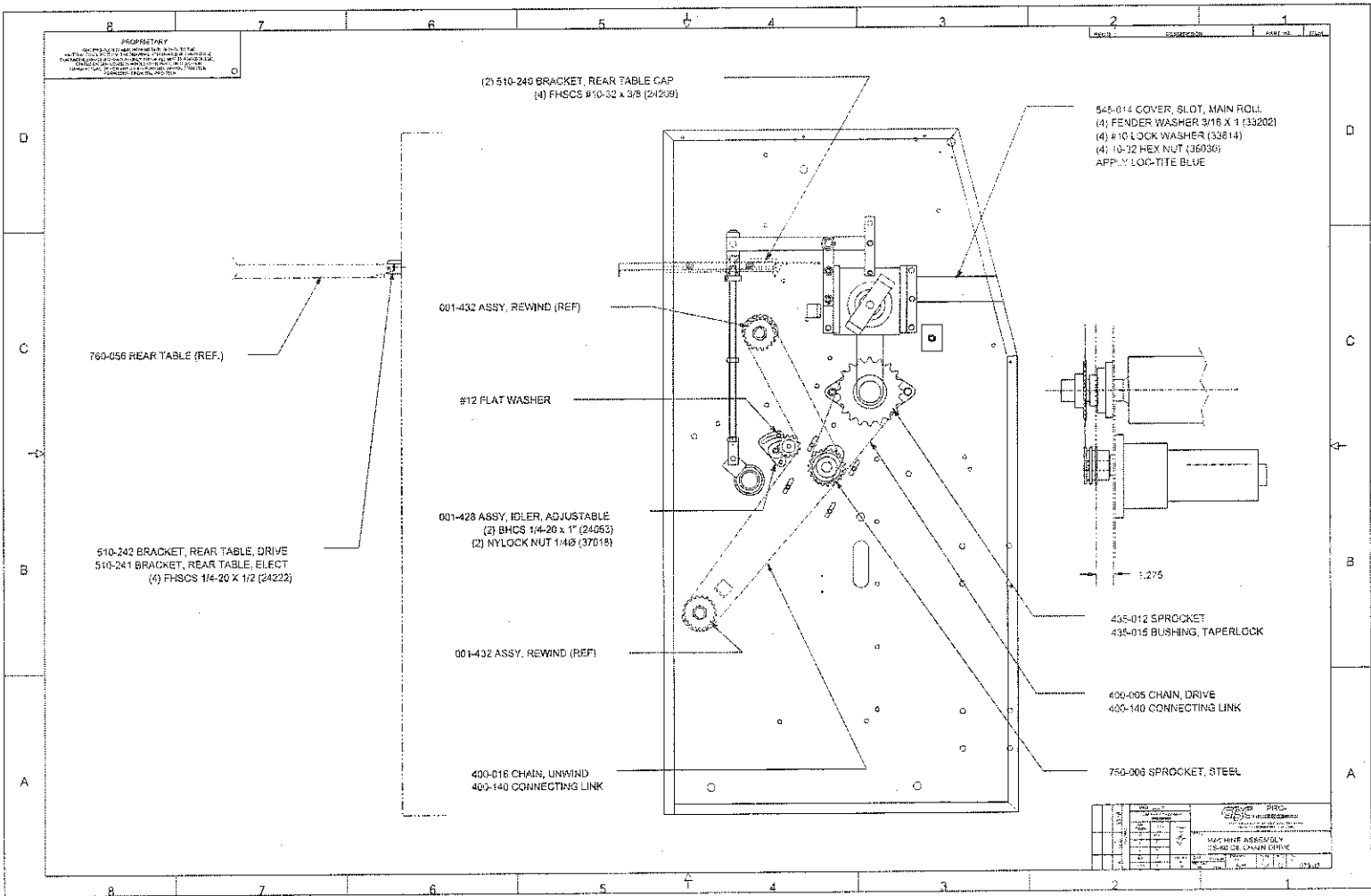


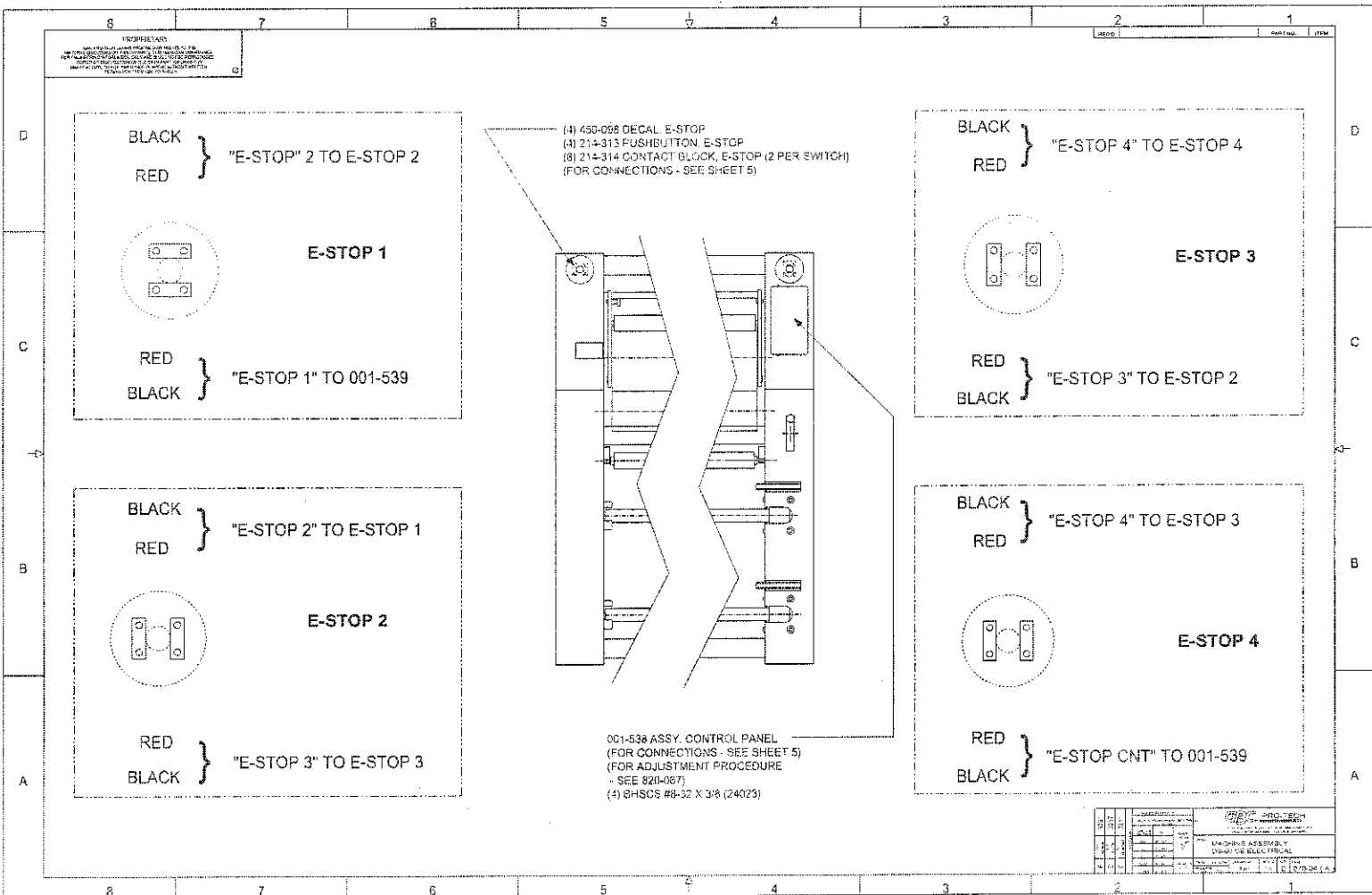


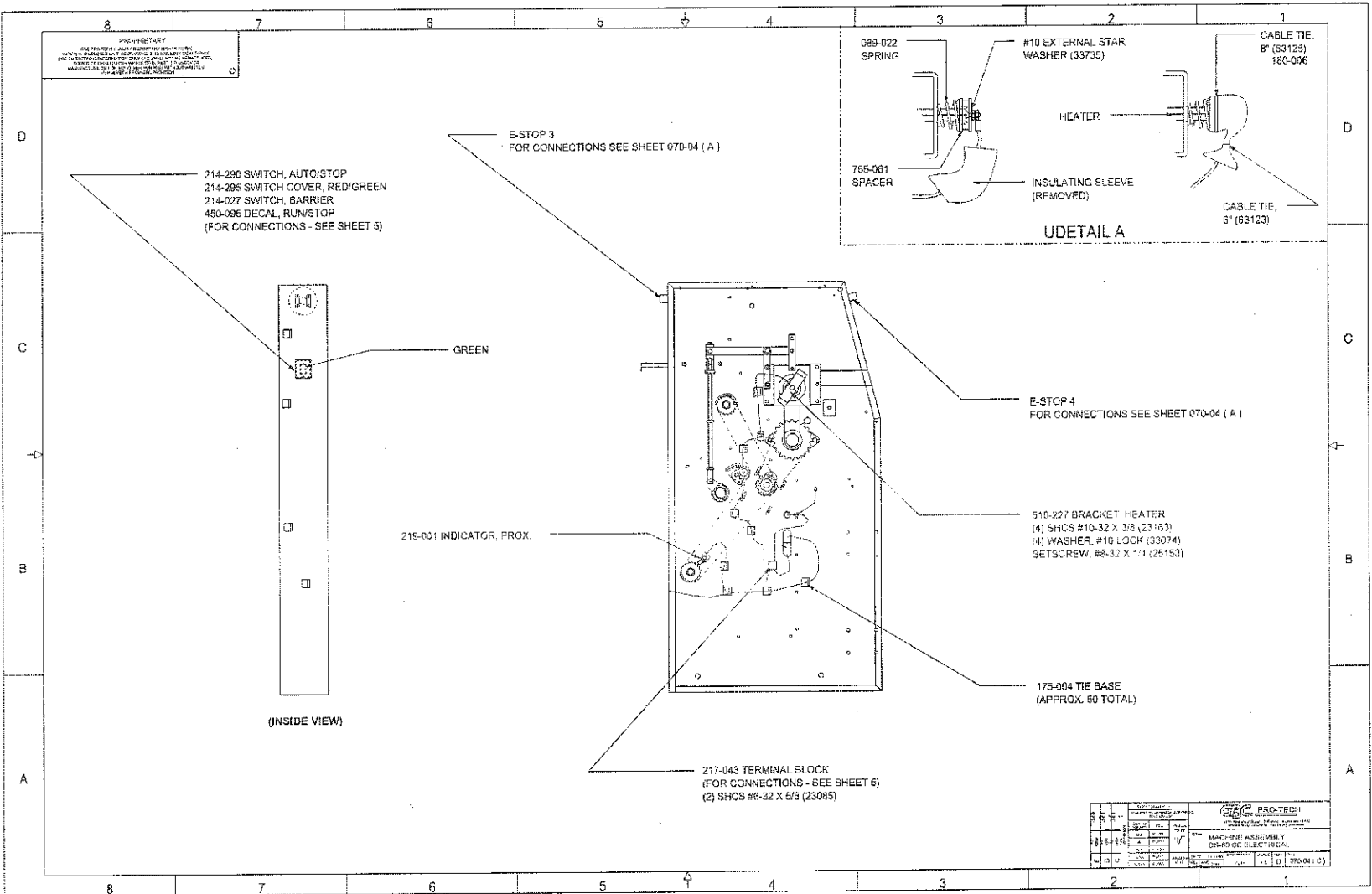
REQ'D	DESCRIPTION	PART NO.	ITEM
2	BEARING, IDLER	020-100	1
1	IDLER, 2" x 64", POWDER COATED	620-406	2
1	SHAFT, IDLER ROLL	710-080	3

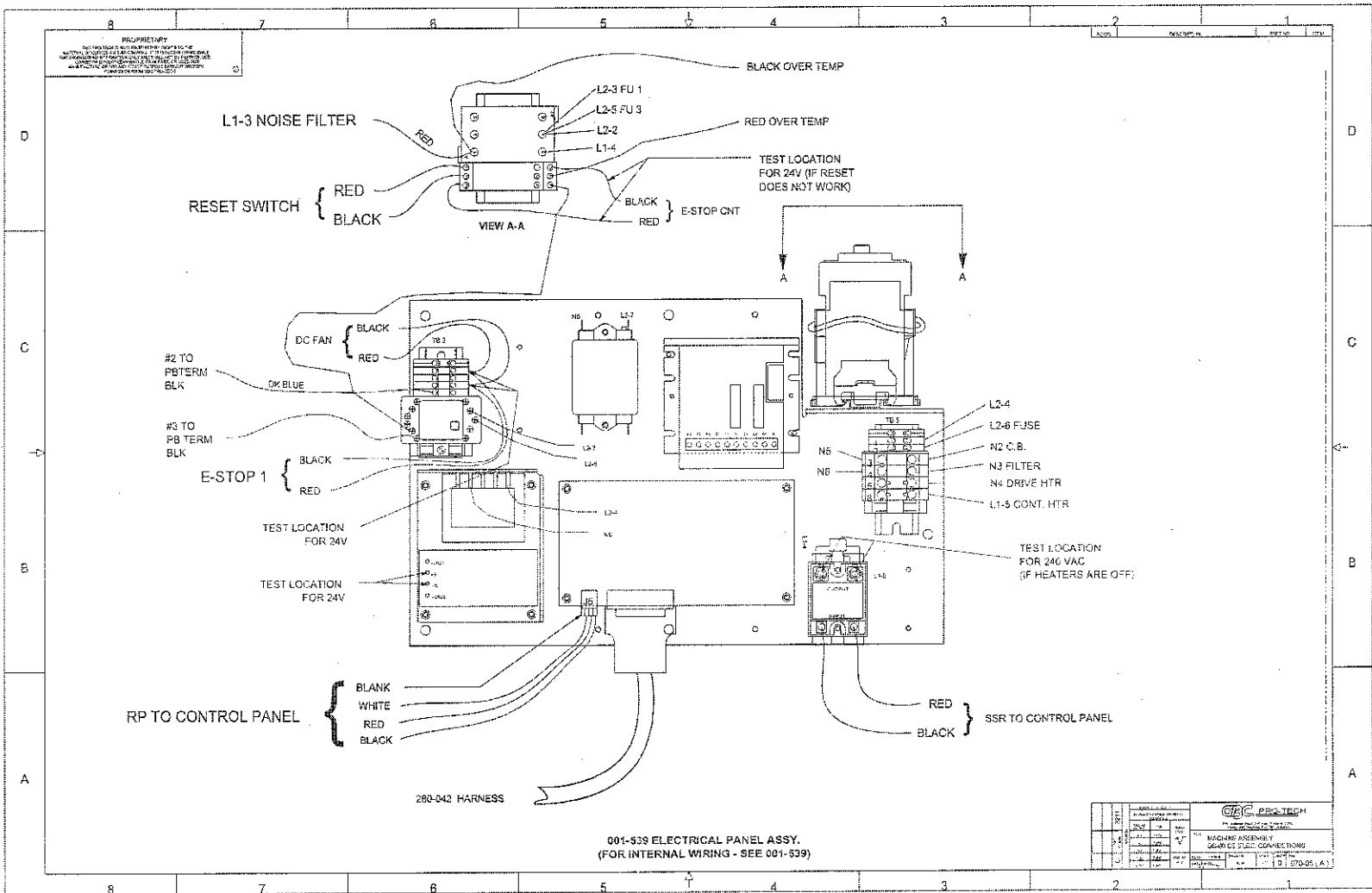
PROPRIETARY
 GBC PRO-TECH CLAIMS PROPRIETARY RIGHTS TO THE MATERIAL DISCLOSED ON THIS DRAWING. IT IS ISSUED IN CONFIDENCE FOR ENGINEERING INFORMATION ONLY AND SHALL NOT BE REPRODUCED, COPIED OR DISCLOSED IN WHOLE OR IN PART, OR USED FOR MANUFACTURE OR FOR ANY OTHER PURPOSE WITHOUT WRITTEN PERMISSION FROM GBC PRO-TECH

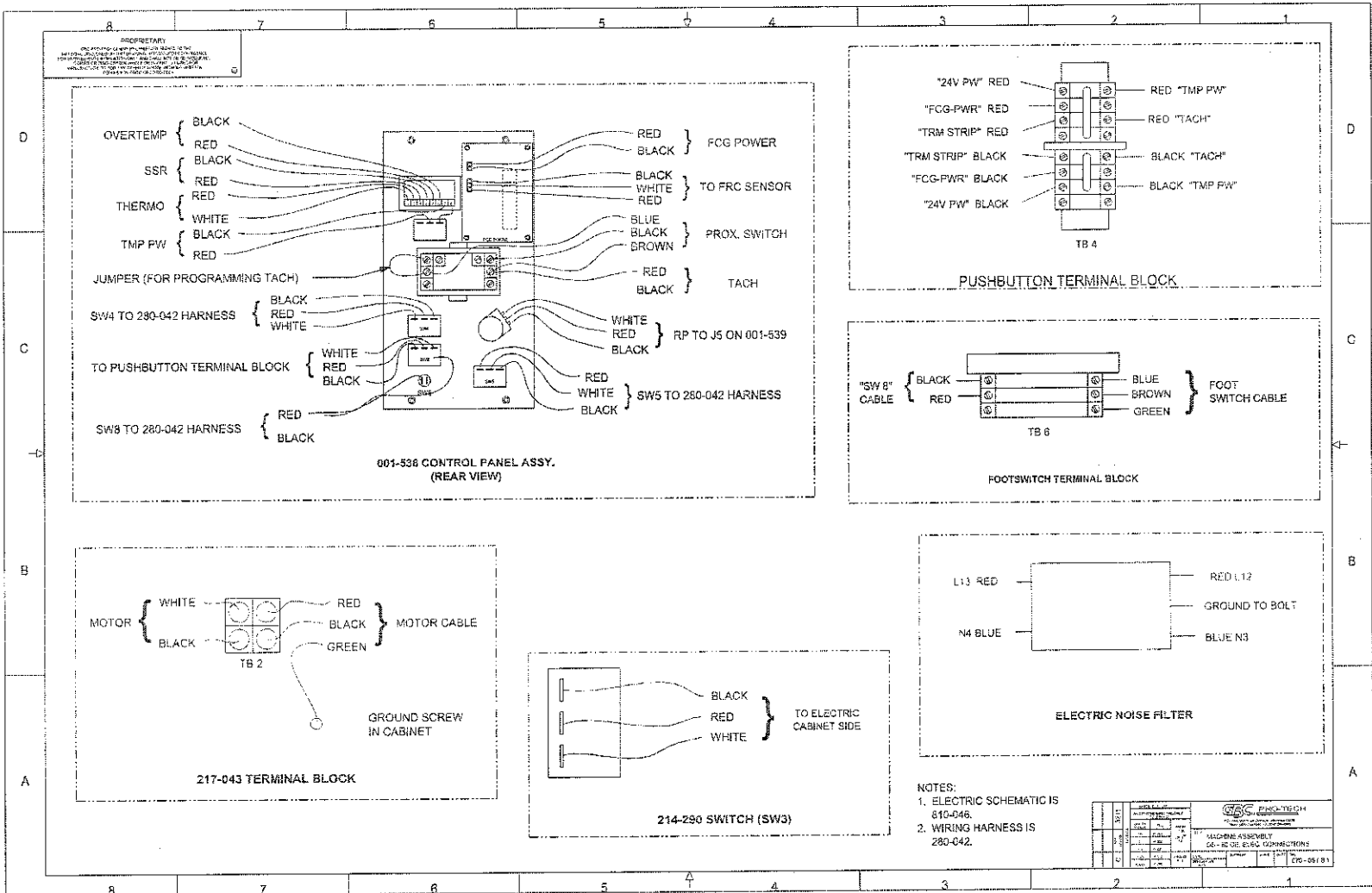
SHEET 1 OF 1		UNLESS OTHERWISE SPECIFIED TO DIMENSIONS		FINISH TO BE		DATE: 4-26-87		DRAWN BY: AJH		SCALE: 1:1		SIZE: B		Shp: 001-394	
GRASS	TOL	XX	F.104	X	F.105	XX	F.106	XX	F.107	XX	F.108	XX	F.109	XX	F.110
GBC PRO-TECH 415 Anderson Road, DuPont, Delaware 19822 Phone: (302) 398-8200 Fax: (302) 398-8202															
TITLE: IDLER DS-60 RELEASE: 1235															

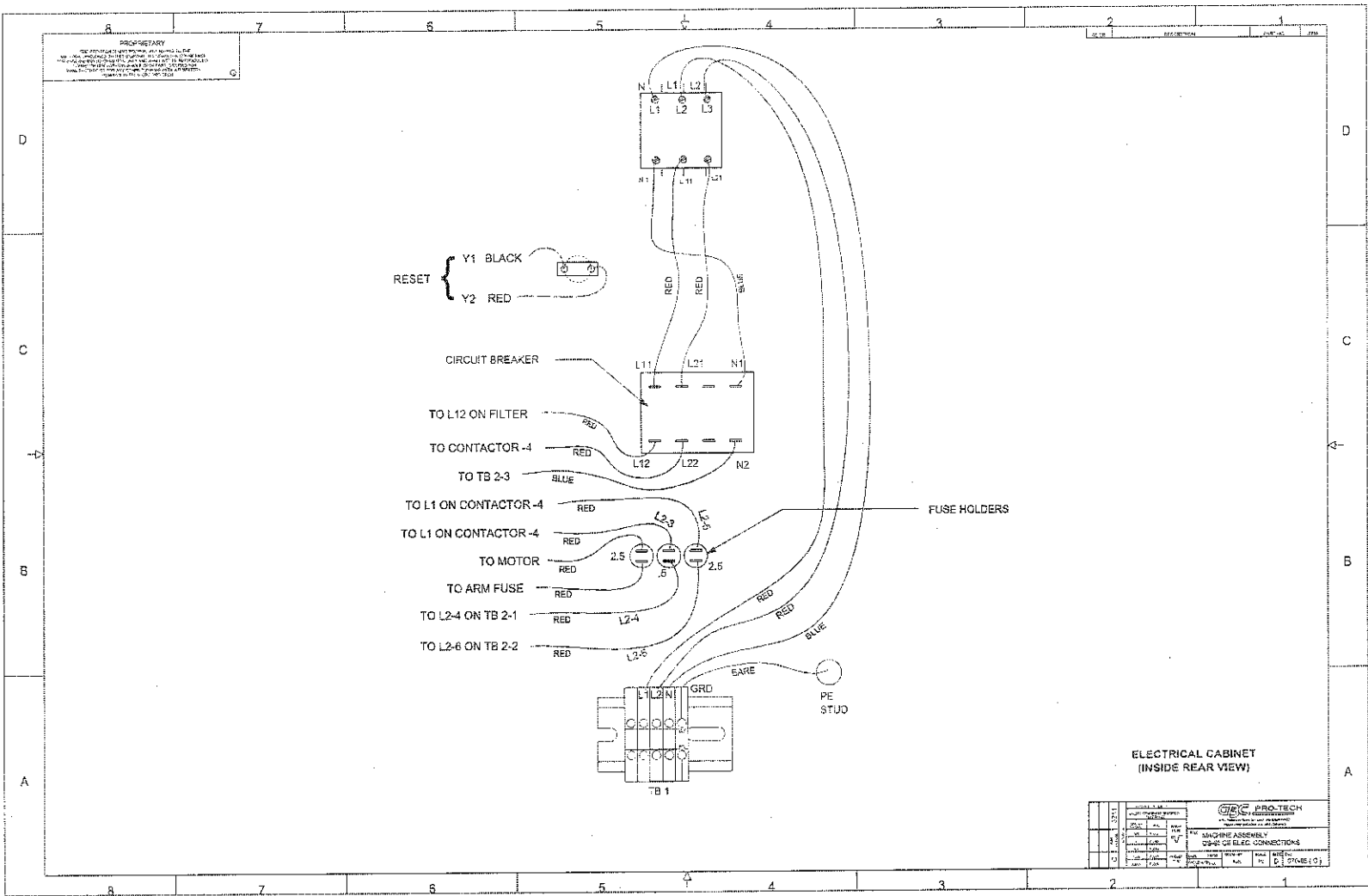


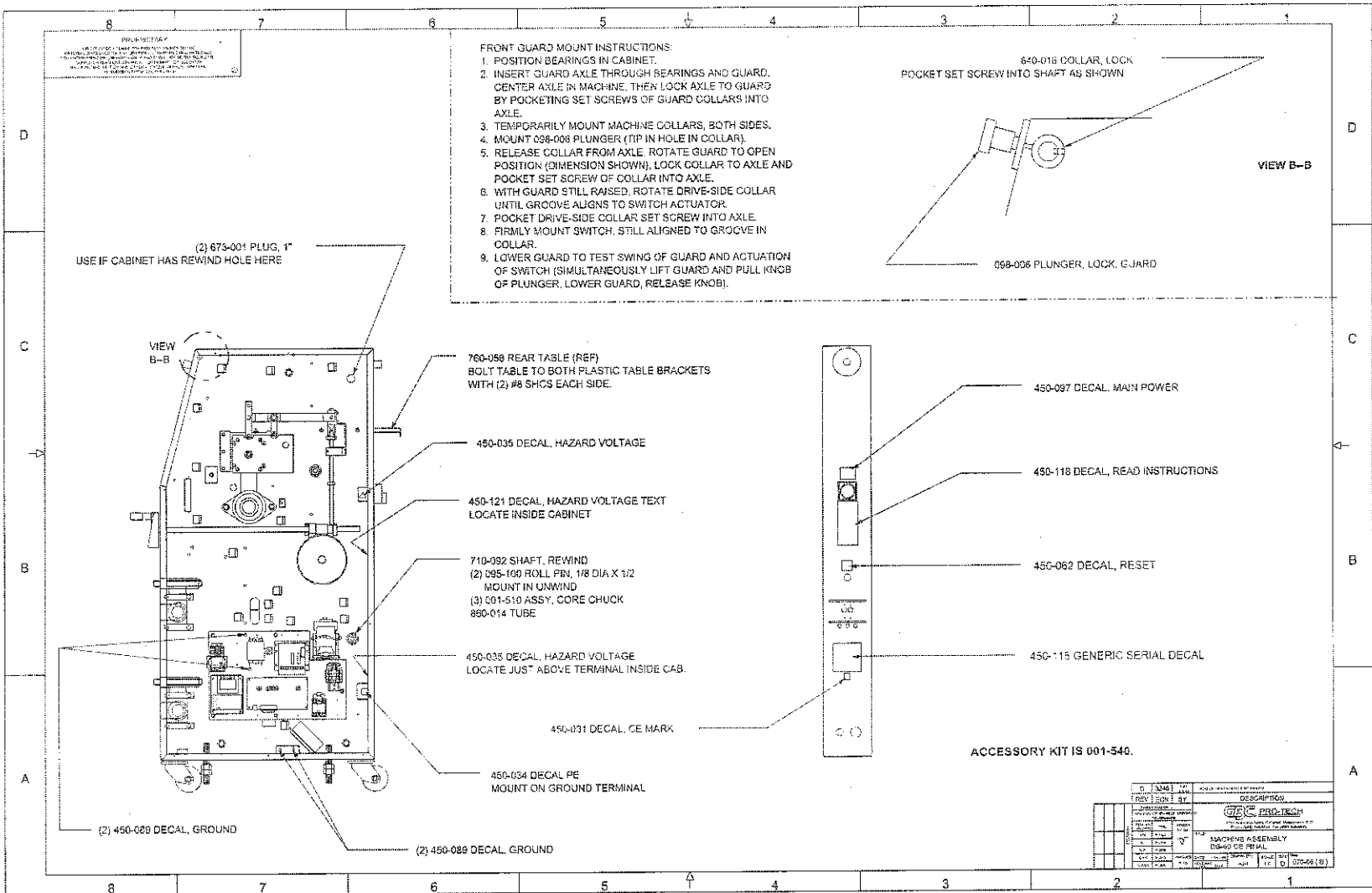


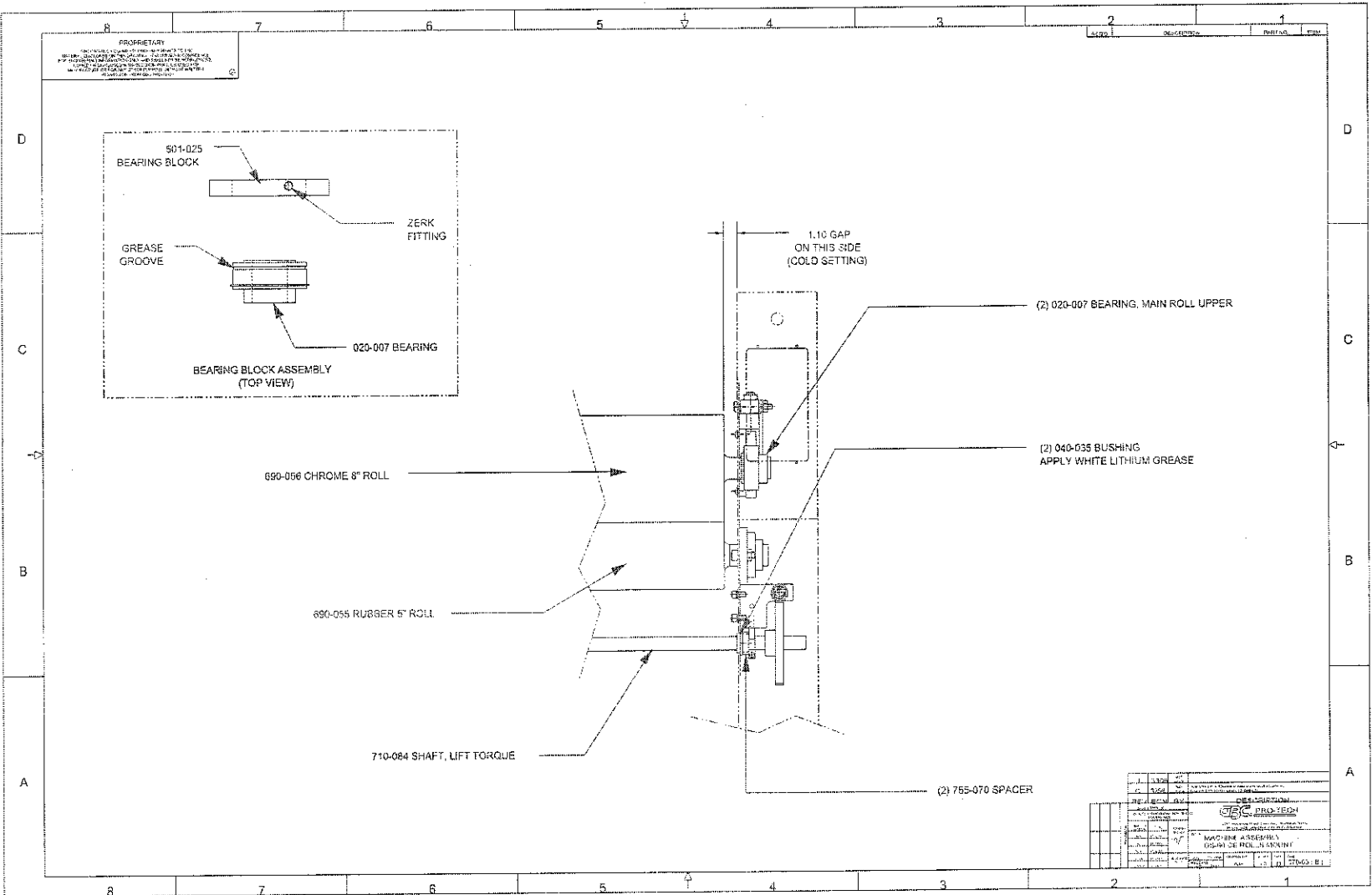


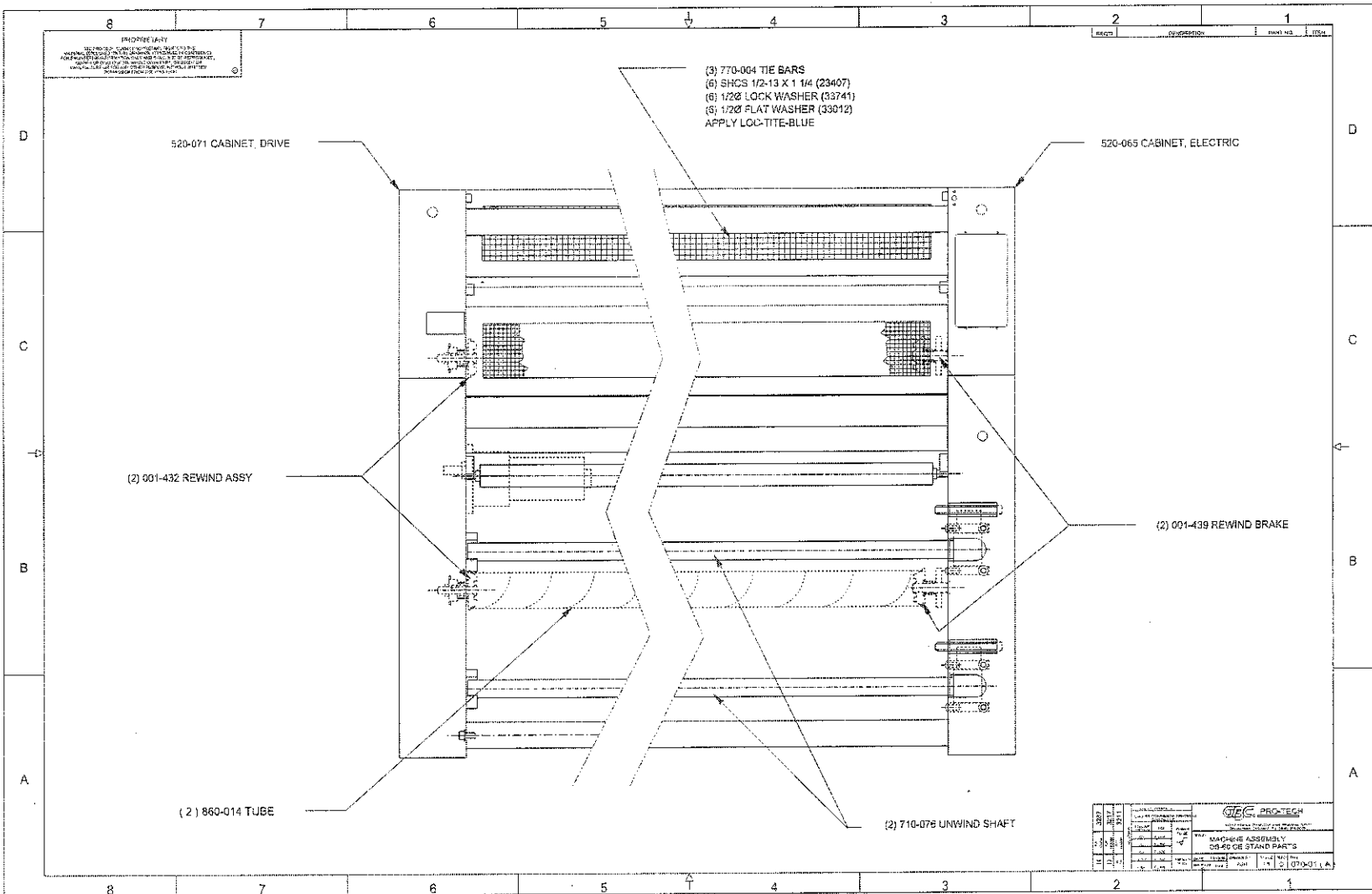


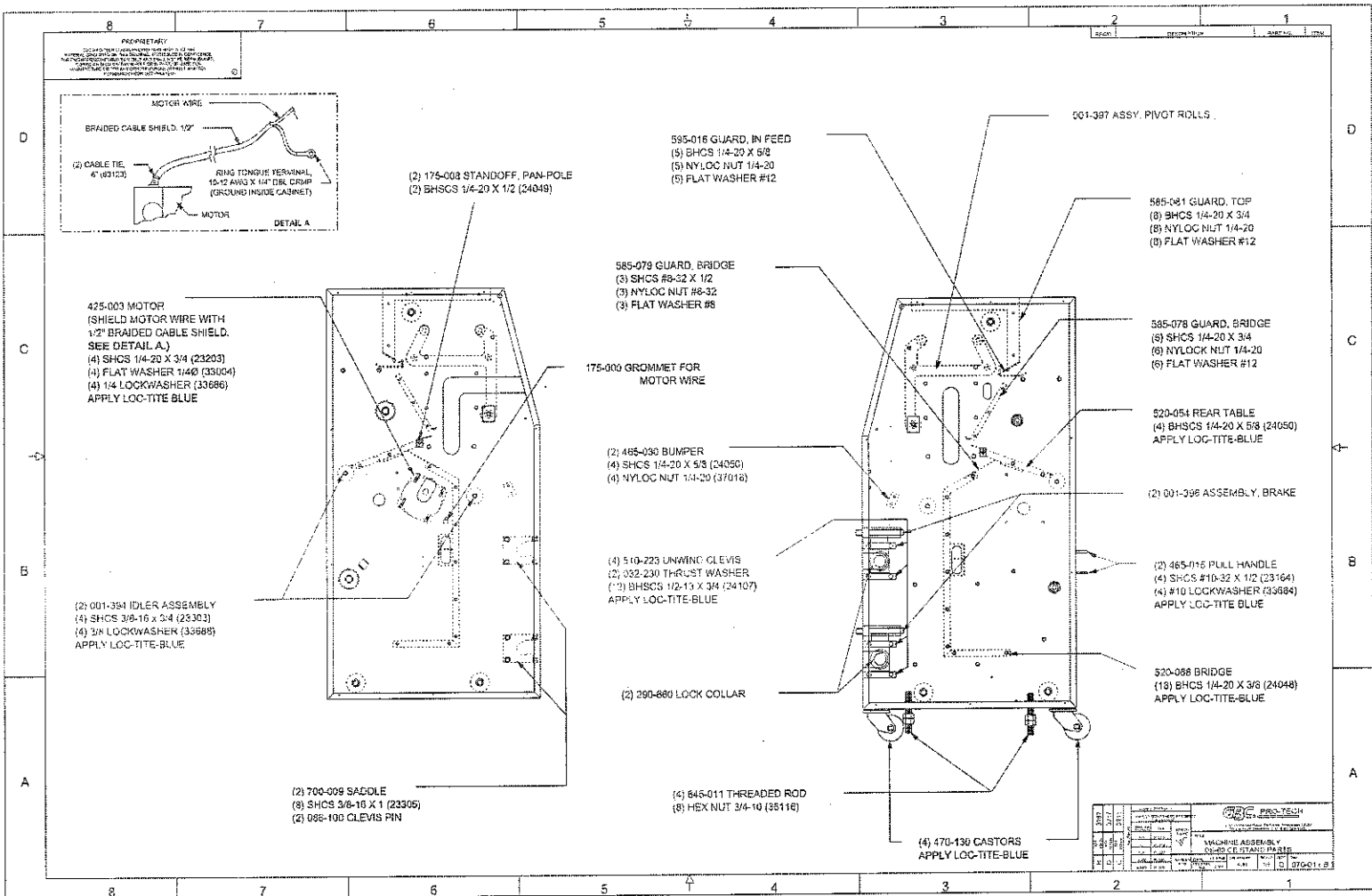


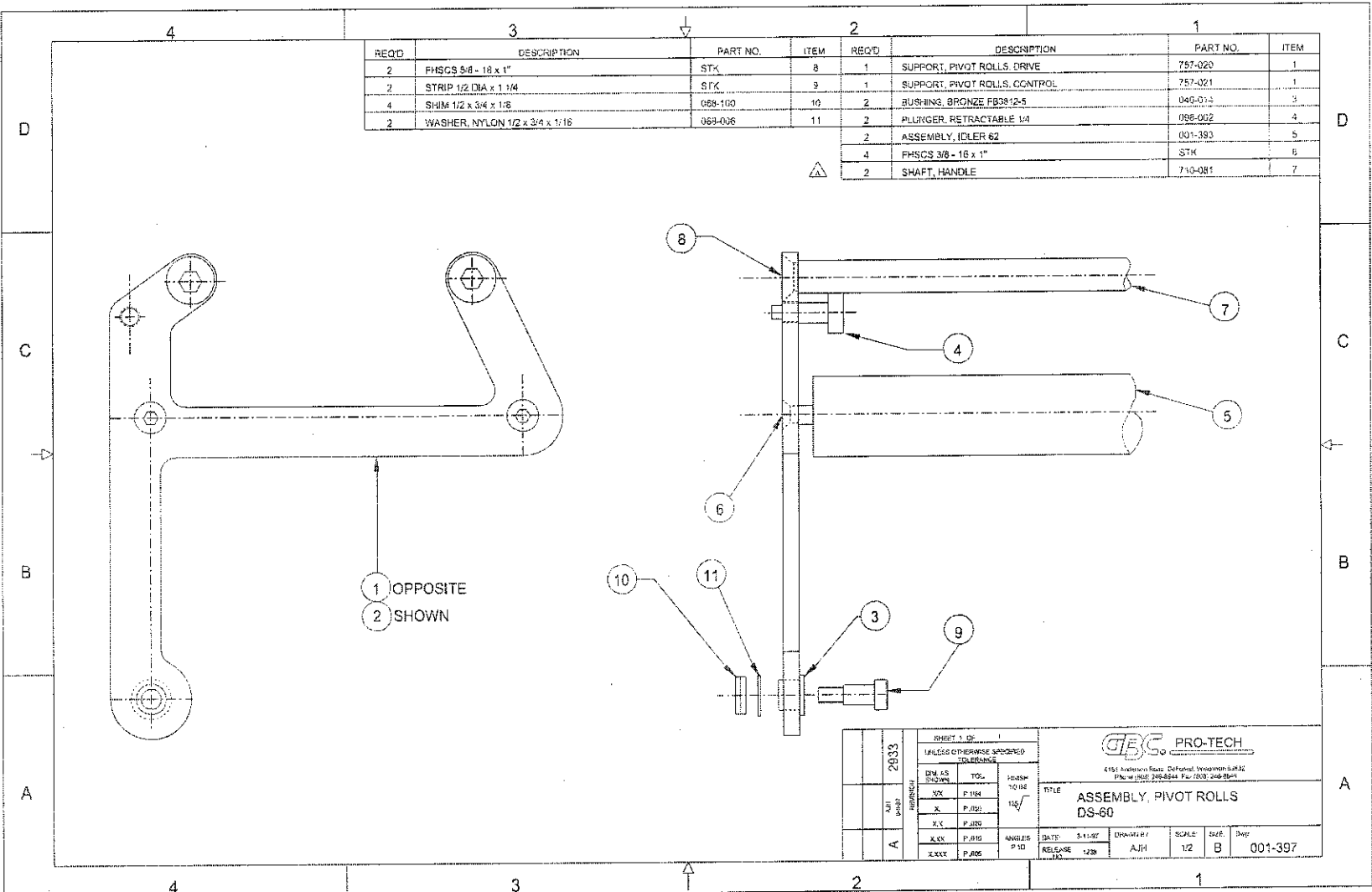








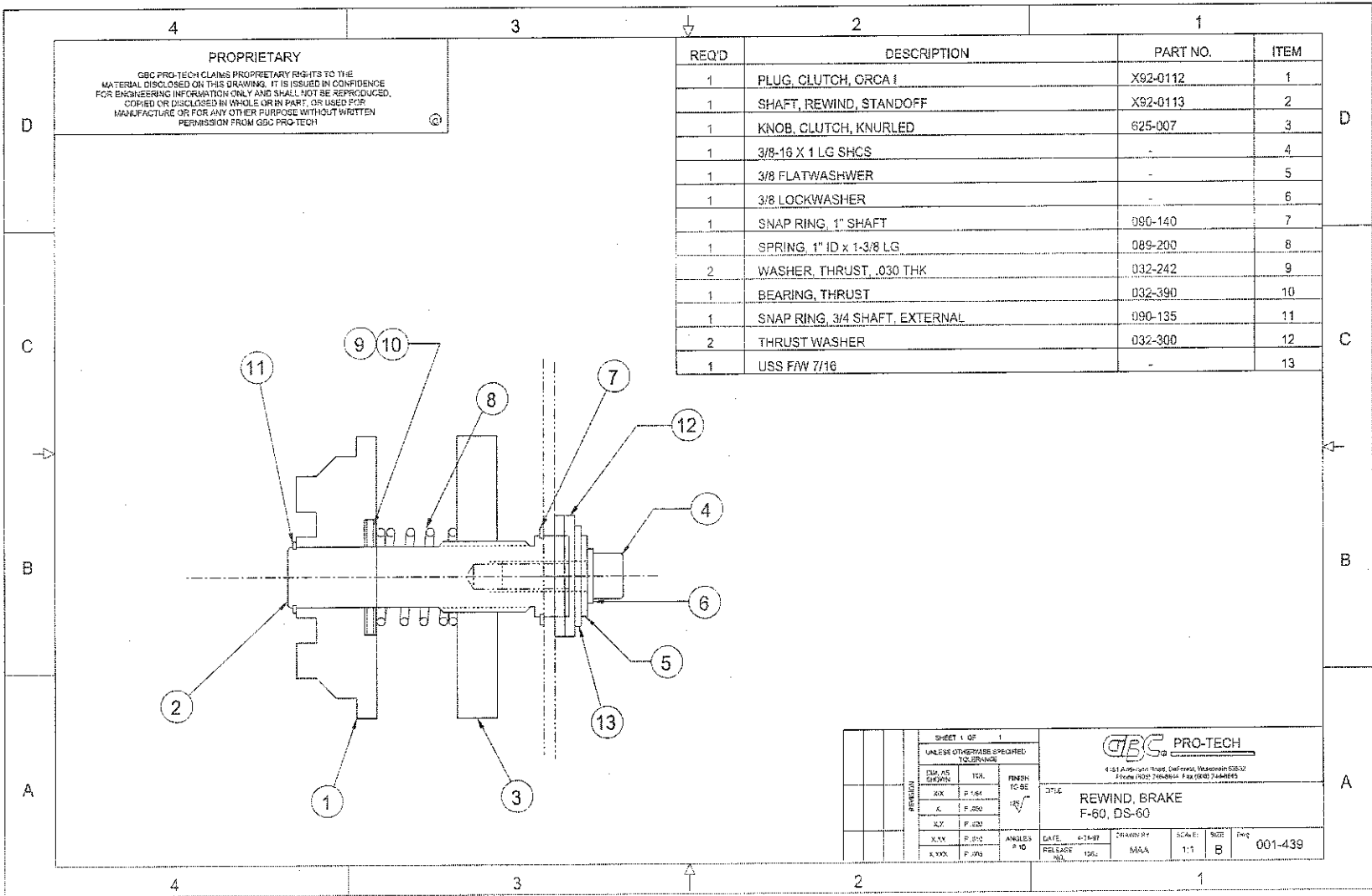




REQ'D	DESCRIPTION	PART NO.	ITEM	REQ'D	DESCRIPTION	PART NO.	ITEM
2	FHSCS 3/8 - 18 x 1"	STK	8	1	SUPPORT, PIVOT ROLLS, DRIVE	757-020	1
2	STRIP 1/2 DIA x 1 1/4	STK	9	1	SUPPORT, PIVOT ROLLS, CONTROL	757-021	1
4	SHIM 1/2 x 3/4 x 1/8	068-100	10	2	BUSHING, BRONZE FB3812-5	040-011	3
2	WASHER, NYLON 1/2 x 3/4 x 1/16	069-006	11	2	PLUNGER, RETRACTABLE 1/4	098-002	4
				2	ASSEMBLY, IDLER 62	001-393	5
				4	FHSCS 3/8 - 16 x 1"	STK	6
				2	SHAFT, HANDLE	710-081	7

1 OPPOSITE
2 SHOWN

2033		SHEET 1 OF 1		UNLESS OTHERWISE SPECIFIED TOLERANCE			
FINISH	TOL.	FINISH	TOL.	4151 Anderson Blvd. DeKalb, Georgia 30132 Phone (404) 248-8244 Fax (404) 248-8841			
DM AS	F.154	FRANK	1/8"	TITLE ASSEMBLY, PIVOT ROLLS DS-60			
XX	F.154	TO BE	1/8"				
X	F.154	1/8"	1/8"				
X	F.154	1/8"	1/8"				
DATE	3-11-87	DRWGNG	AJH	SCALE	SIZE	Dep	001-397
RELEASE	1/28	DATE	1/28				



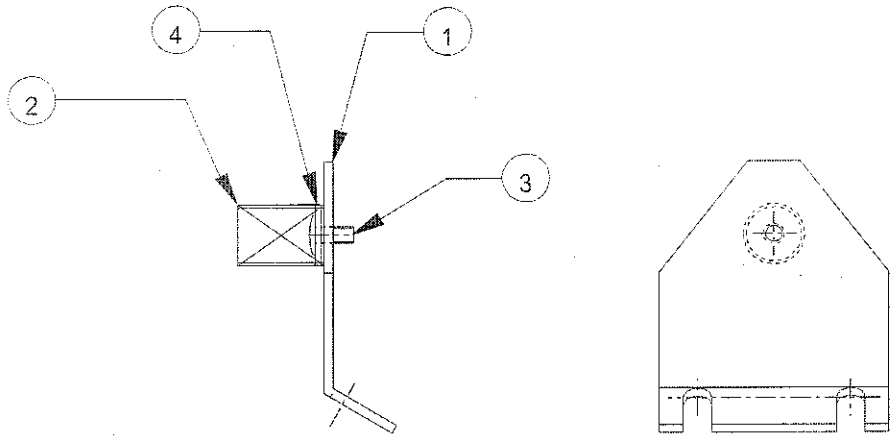
PROPRIETARY
 GBC PRO-TECH CLAIMS PROPRIETARY RIGHTS TO THE MATERIAL DISCLOSED ON THIS DRAWING. IT IS ISSUED IN CONFIDENCE FOR ENGINEERING INFORMATION ONLY AND SHALL NOT BE REPRODUCED, COPIED OR DISCLOSED IN WHOLE OR IN PART, OR USED FOR MANUFACTURE OR FOR ANY OTHER PURPOSE WITHOUT WRITTEN PERMISSION FROM GBC PRO-TECH

SHEET 1 OF 1		UNLESS OTHERWISE SPECIFIED TOLERANCE			
DIM. AS SHOWN		TOL.	FINISH	4151 Adams Road, Industrial, Westborough, MA 01581 Phone: (508) 746-6944 Fax: (508) 746-6945	
AX	F.154		125	REWIND, BRAKE F-60, DS-60	
X	F.250			DATE: 6-14-97	CH. BY: MAA
XY	F.120			SCALE: 1:1	SIZE: B
X.XY	F.125	ANGLES		RELEASE: 100%	FIG: 001-439
X.YXX	F.125	P.10			

REQ'D	DESCRIPTION	PART NO.	ITEM
1	SUPPORT, THERMOCOUPLE	757-026	1
1	SPRING	089-021	2
1	BHSCS #6-32 x 1/4	-	3
1	WASHER	-	4
1	INSTALLATION INSTRUCTIONS	820-151	5

PROPRIETARY
 GBC PRO-TECH CLAIMS PROPRIETARY RIGHT IN THE
 MATERIALS DISCLOSED ON THIS DRAWING. IT IS ISSUED IN CONFIDENCE
 FOR ENGINEERING INFORMATION ONLY AND SHALL NOT BE REPRODUCED,
 COPIED OR DISCLOSED BY ANY MEANS, IN ANY FORM, OR USED FOR
 MANUFACTURE OR FOR ANY OTHER PURPOSE WITHOUT WRITTEN
 PERMISSION FROM GBC PRO-TECH

FASTENAL #24016
 FASTENAL #33070



NOTES:
 1. PREASSEMBLE BEFORE PACKAGING
 FOR SHIPMENT.

SHEET 1 OF 1				4151 Anderson Road, DeForest, Wisconsin 53532 Phone (608) 248-8844 Fax (608) 248-8846				
UNLESS OTHERWISE SPECIFIED TOLERANCE								
REVISION	DIM AS SHOWN	TOL.	FINISH TO BE	TITLE: KIT, THERMOCOUPLE SUPPORT DS - 60				
	XX	P .004	125					
	X	P .050						
	XX	P .020						
	X XX	P .010	ANGLES P 1D	DATE: 1/13/98	DRAWN BY: AJH	SCALE: 1/1	SIZE: A	Dwg: 005-024
	X XXX	P .005		RELEASE NO 1833				