




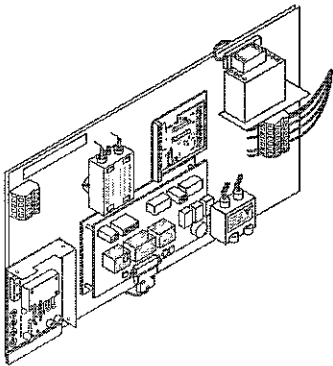



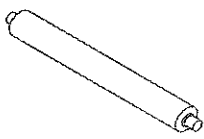
DS 60 Heat Press Parts List

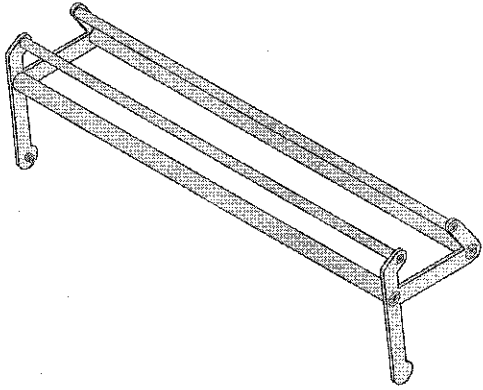


GBC IS AN ACCO BRANDS COMPANY

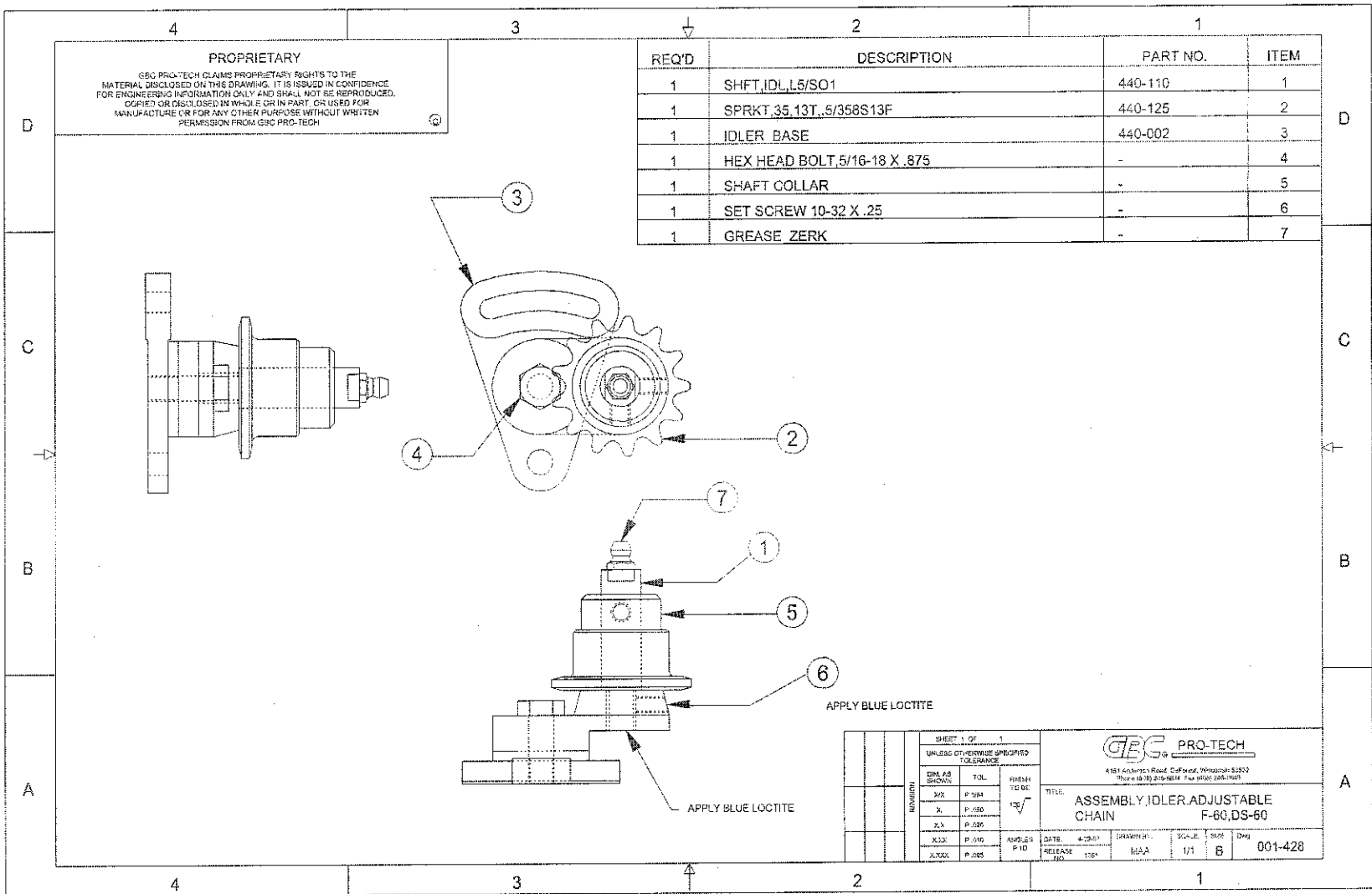


Section 9: Illustrated Parts List

<p>Accessory Pack <i>See page 3-4 for the list of included accessories.</i></p>	<p>001-540</p>
<p>Adjustable Chain Idler Assembly</p> 	<p>001-428 (Assembly on page 9-4)</p>
<p>Brake Assembly</p> 	<p>001-396 (Assembly on page 9-5)</p>
<p>Drive Rewind Assembly</p> 	<p>001-432 (Assembly on page 9-6)</p>
<p>Electrical Panel Assembly</p> 	<p>001-539 (Assembly on page 9-7)</p>

<p>Front Panel Assembly</p> 	<p>001-538 (Assembly on page 9-8)</p>
<p>Idler Assembly, 65"</p> 	<p>001-394 (Assembly on page 9-9)</p>
<p>Machine Assembly Chain Drive</p>	<p>070-02 (Assembly on page 9-10)</p>
<p>Machine Assembly Electrical</p>	<p>070-04 (A), 070-04 (B), 070-04 (C) (Assemblies on pages 9-11, 9-12 and 9-13)</p>
<p>Machine Assembly Electrical Connections</p>	<p>070-05 (A), 070-05 (B), 070-05 (C) (Assemblies on pages 9-14, 9-15 and 9-16)</p>
<p>Machine Assembly Final</p>	<p>070-06 (A), 070-06 (B) (Assembly on pages 9-17 and 9-18)</p>
<p>Machine Assembly Rolls Mount</p>	<p>070-03 (A), 070-03 (B) (Assemblies on pages 9-19 and 9-20)</p>
<p>Machine Assembly Stand Parts</p>	<p>070-01 (A), 070-01 (B) (Assemblies on pages 9-21 and 9-22)</p>

<p>Pivot Rolls Assembly</p> 	<p>001-397 (Assembly on page 9-23)</p>
<p>Rewind Brake</p> 	<p>001-439 (Assembly on page 9-24)</p>
<p>Thermocouple Support Kit</p> 	<p>005-024 (Assembly on page 9-25)</p>



PROPRIETARY
 GBC PRO-TECH CLAIMS PROPRIETARY RIGHTS TO THE MATERIAL DISCLOSED ON THIS DRAWING. IT IS ISSUED IN CONFIDENCE FOR ENGINEERING INFORMATION ONLY AND SHALL NOT BE REPRODUCED, COPIED OR DISCLOSED IN WHOLE OR IN PART, OR USED FOR MANUFACTURE OR FOR ANY OTHER PURPOSE WITHOUT WRITTEN PERMISSION FROM GBC PRO-TECH

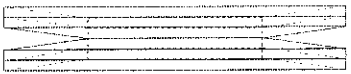
APPLY BLUE LOCTITE

APPLY BLUE LOCTITE

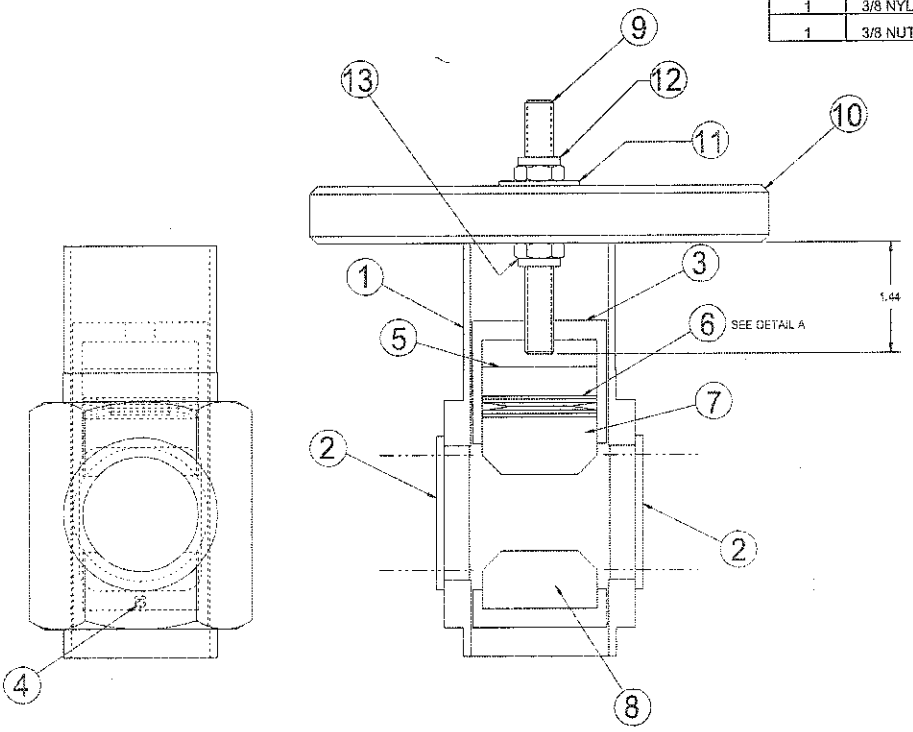
SHEET 1 OF 1		UNLESS OTHERWISE SPECIFIED TOLERANCE			
DIM. AS SHOWN		TOL.	FINISH TO BE	4181 Anderson Road, Colfax, Missouri 63557 Phone: (636) 262-8814 Fax: (636) 262-8815	
1/16	F-104		120	TITLE: ASSEMBLY, IDLER ADJUSTABLE CHAIN F-60, DS-60	
1/8	F-100			DATE: 4/20/97 RELEASE: 138*	
1/4	F-100			DRAWN BY: HAA SCALE: 1/1 SIZE: B DWG: 001-428	
3/8	F-100				
1/2	F-100				
3/4	F-100				
1	F-100				

REQ'D	DESCRIPTION	PART NO.	ITEM
1	PIN, PIVOT, UNWIND	625-008	1
2	BUSHING, FLANGE, NYLON	500-006	2
1	HOUSING, BRAKE	625-022	3
1	ROLL PIN, 1/8 X 1-3/4	095-105	4
1	PISTON, BRAKE	625-019	5
4	SPRING, DISC, 3/4 X 1-1/2	089-009	6
1	PAD, BRAKE, TOP	625-020	7
1	PAD, BRAKE, BOTTOM	625-021	8
1	STUD	645-024	9
1	UNWIND DIAL	625-018	10
1	3/8 WASHER	STK	11
1	3/8 NYLOC NUT	STK	12
1	3/8 NUT	STK	13

PROPRIETARY
 GBC PRO-TECH CLAIMS PROPRIETARY RIGHTS TO THE MATERIAL DISCLOSED ON THIS DRAWING. IT IS ISSUED IN CONFIDENCE FOR ENGINEERING INFORMATION ONLY AND SHOULD NOT BE REPRODUCED, COPIED OR DISCLOSED IN ANY MANNER OR USED FOR MANUFACTURE OR FOR ANY OTHER PURPOSE WITHOUT WRITTEN PERMISSION FROM GBC PRO-TECH.

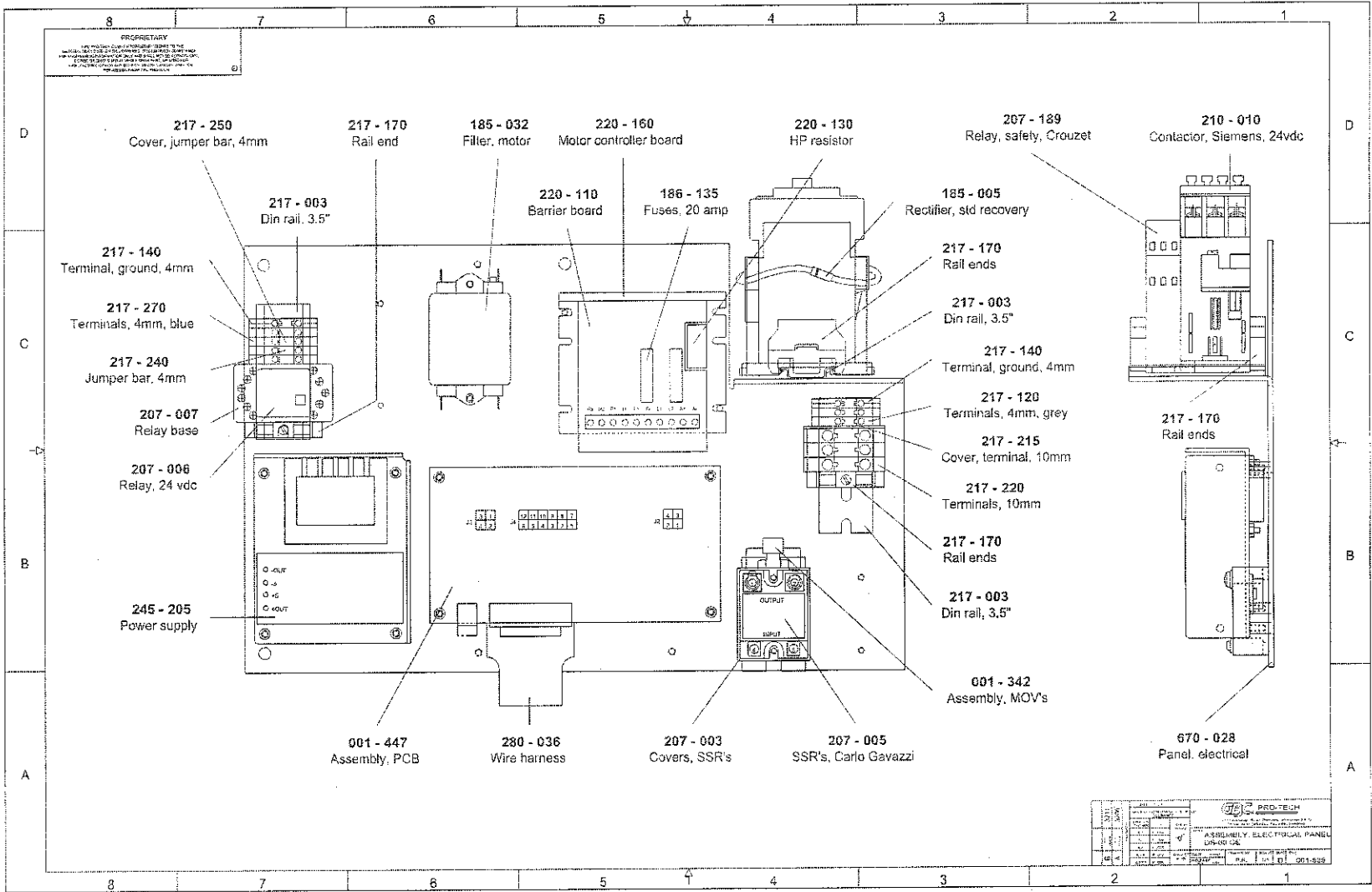


UDETAIL A
 DISC SPRING ORIENTATION
 3X SCALE

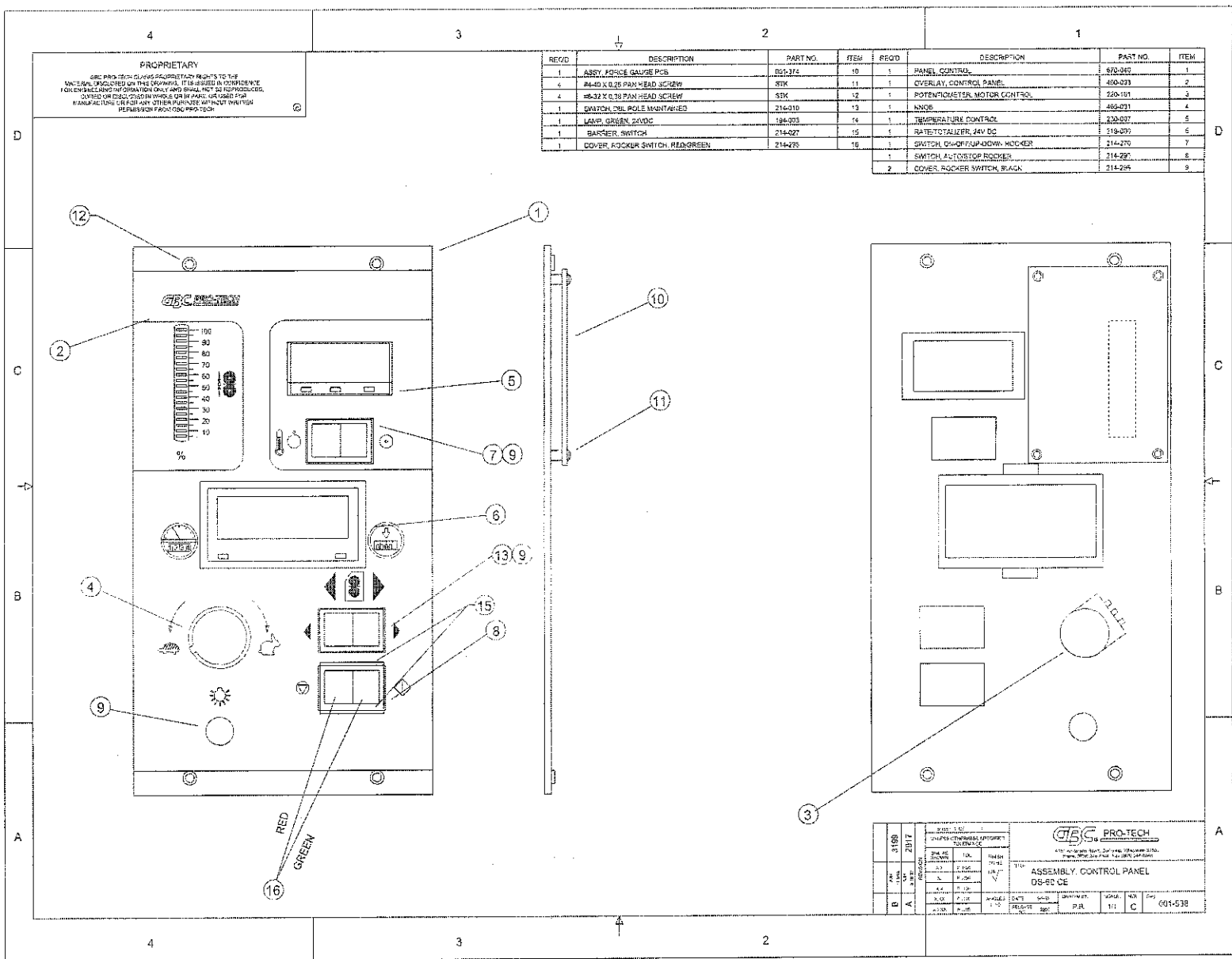


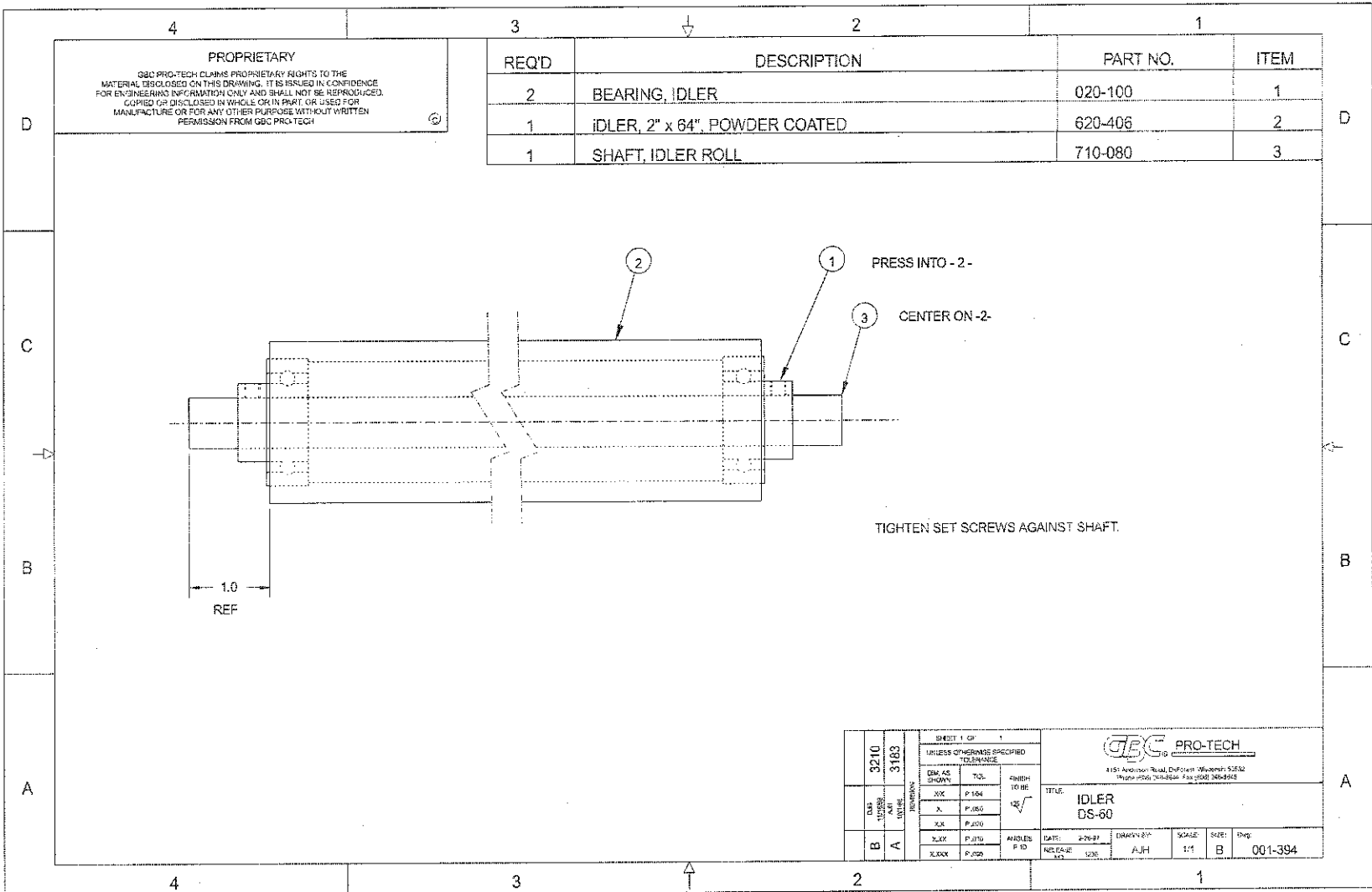
APPLY ANTI-SIEZE COMPOUND

SHEET 1 OF 1		GBC PRO-TECH	
UNLESS OTHERWISE SPECIFIED		4155 Gadsden Road, Dalton, Georgia 31702 Phone: 706/844-1111 Fax: 706/844-1112	
TITLE: ASSEMBLY, BRAKE DS-60, F-60		SCALE: 1/1	SIZE: C
DATE: 3-20-07	DRAWN BY: AJH	APPROVED BY: PLO	DISP: 001-336
REV: 3-20-04	BY: PLO	DATE: 3-20-04	BY: PLO
REV: 7-20-05	BY: PLO	DATE: 7-20-05	BY: PLO
REV: 7-20-05	BY: PLO	DATE: 7-20-05	BY: PLO
REV: 7-20-05	BY: PLO	DATE: 7-20-05	BY: PLO



PRO-TECH	
REV	DATE
1	08/99
ASSEMBLY ELECTRICAL PANEL	
DSK402E	
001-528	

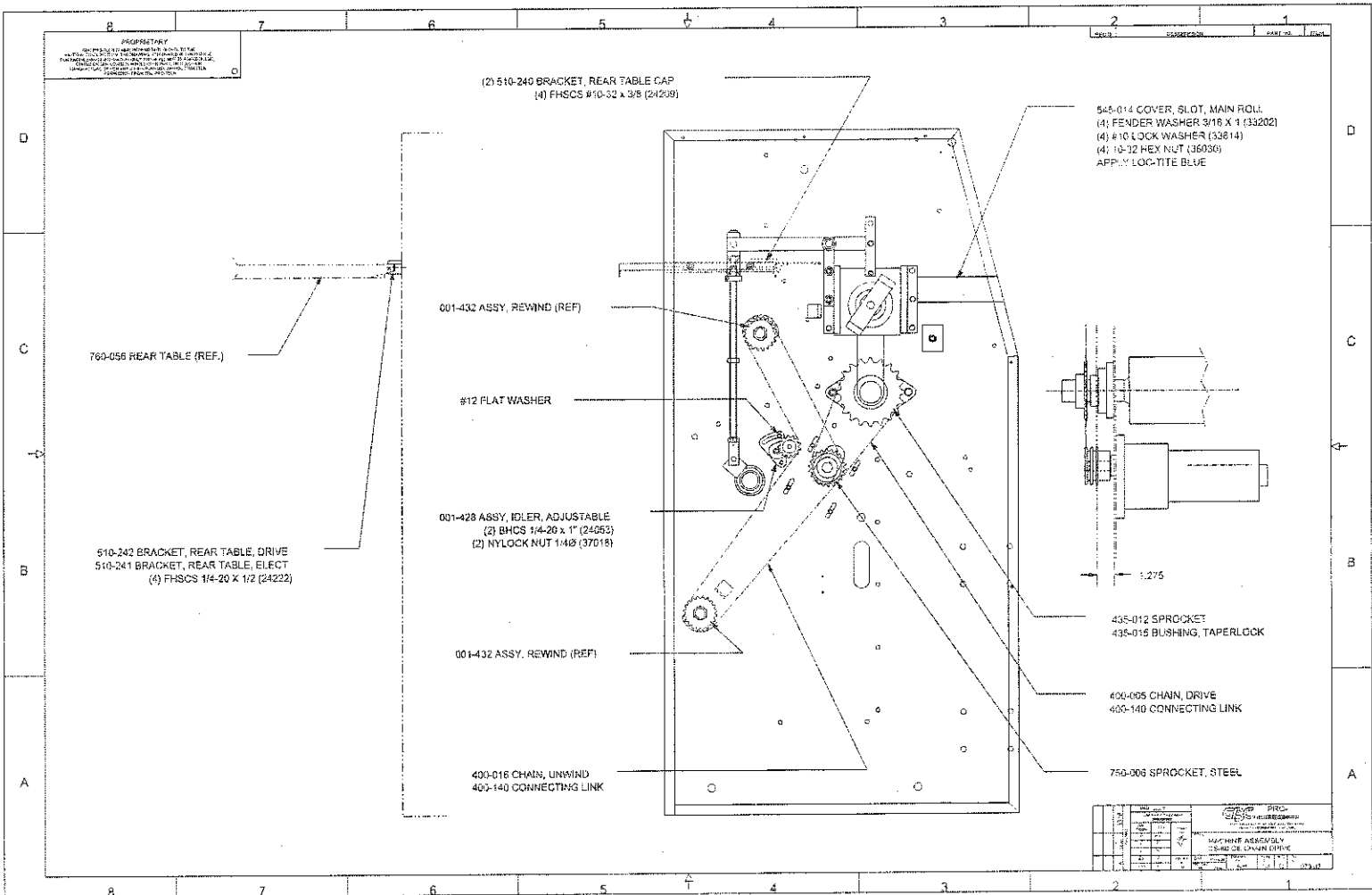


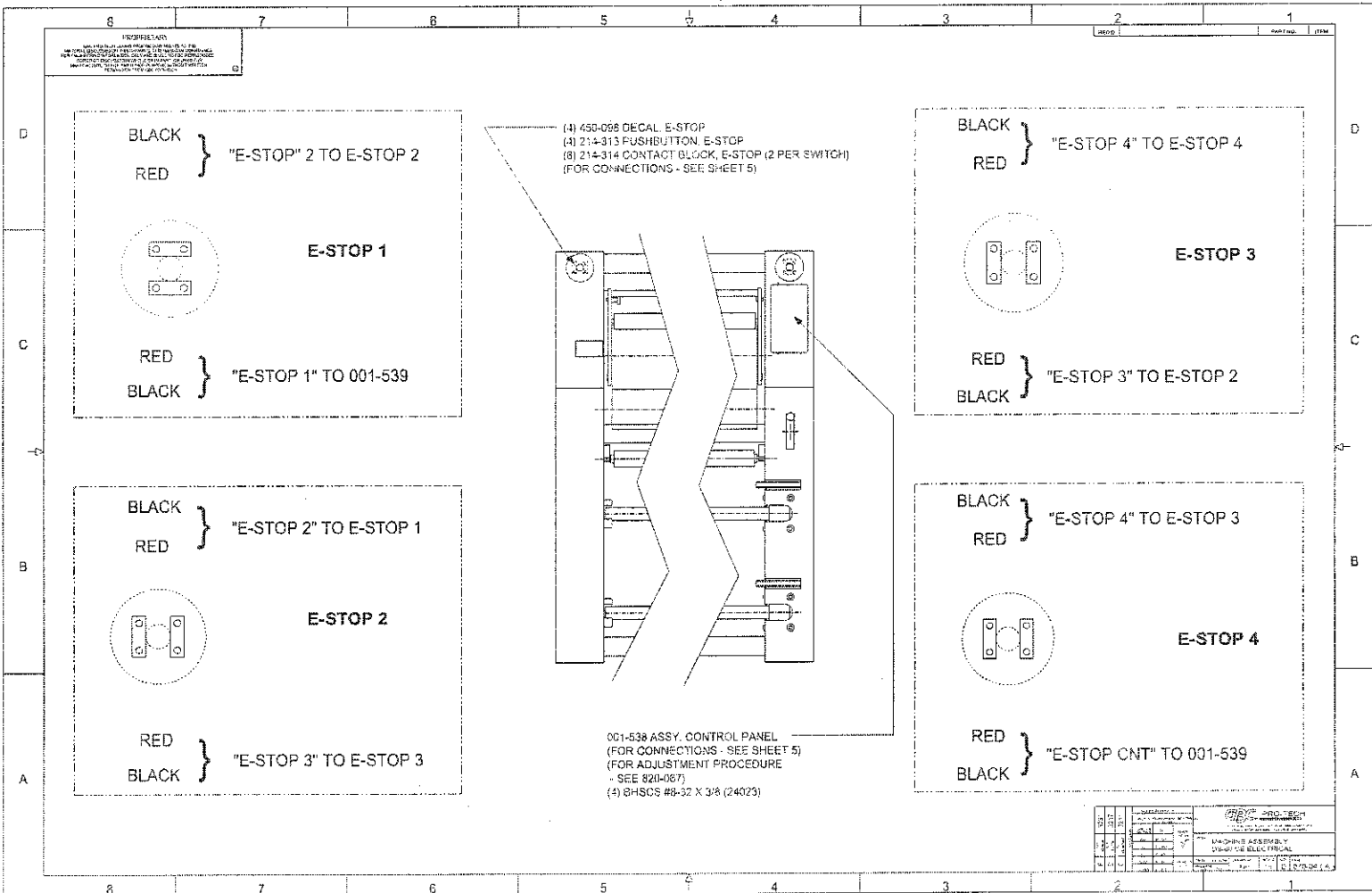


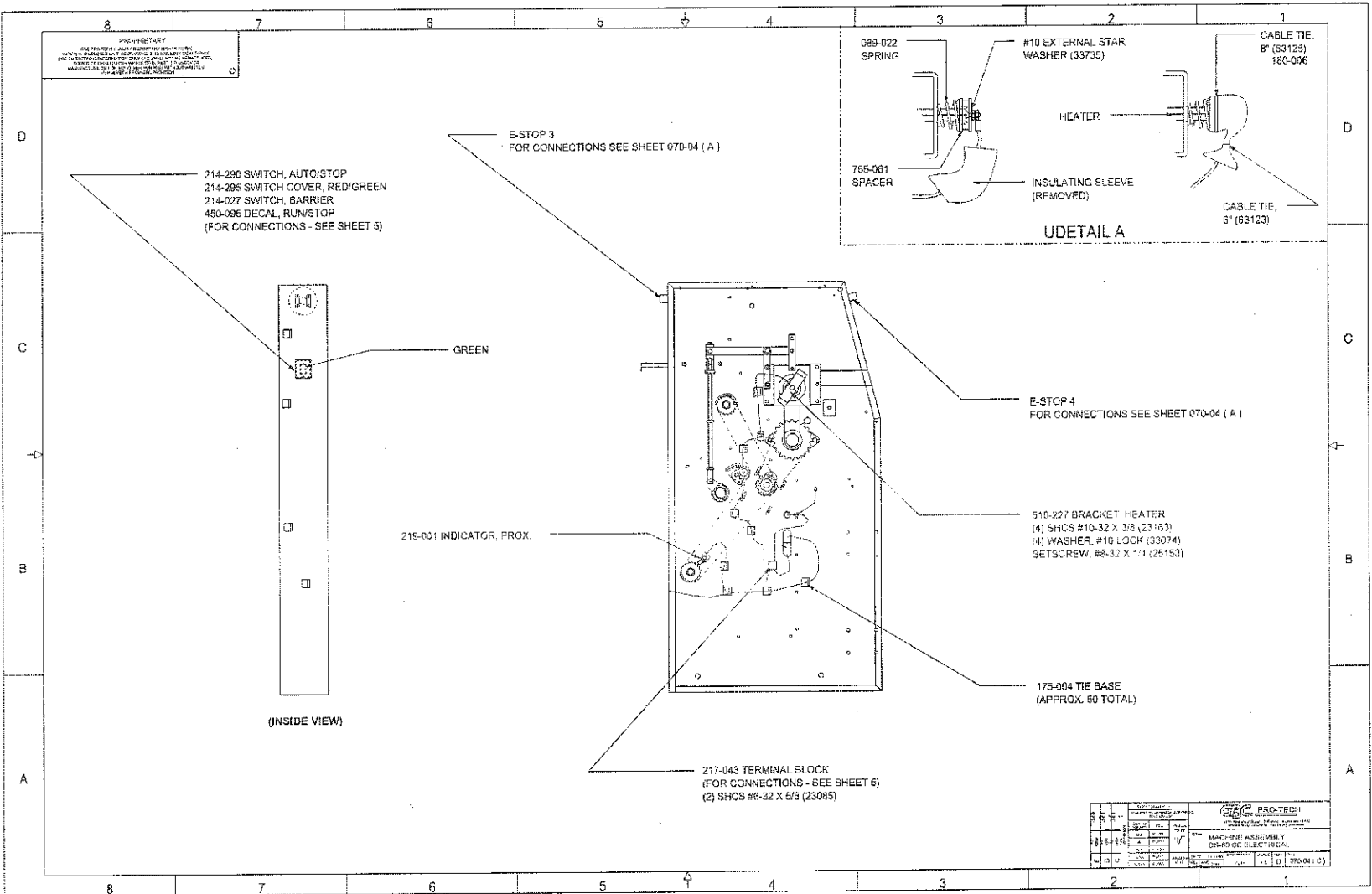
REQ'D	DESCRIPTION	PART NO.	ITEM
2	BEARING, IDLER	020-100	1
1	IDLER, 2" x 64", POWDER COATED	620-406	2
1	SHAFT, IDLER ROLL	710-080	3

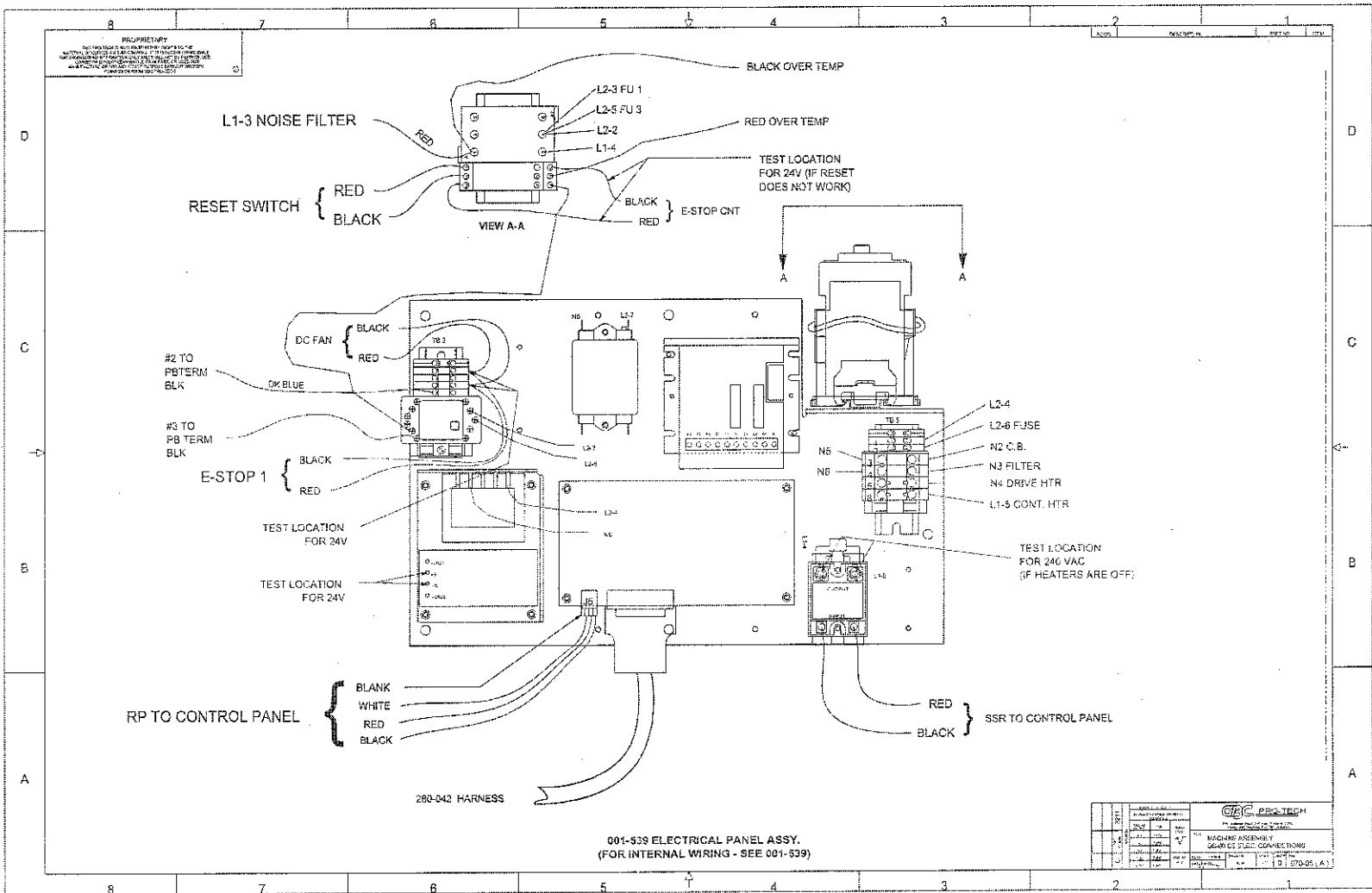
PROPRIETARY
 GBC PRO-TECH CLAIMS PROPRIETARY RIGHTS TO THE MATERIAL DISCLOSED ON THIS DRAWING. IT IS ISSUED IN CONFIDENCE FOR ENGINEERING INFORMATION ONLY AND SHALL NOT BE REPRODUCED, COPIED OR DISCLOSED IN WHOLE OR IN PART, OR USED FOR MANUFACTURE OR FOR ANY OTHER PURPOSE WITHOUT WRITTEN PERMISSION FROM GBC PRO-TECH

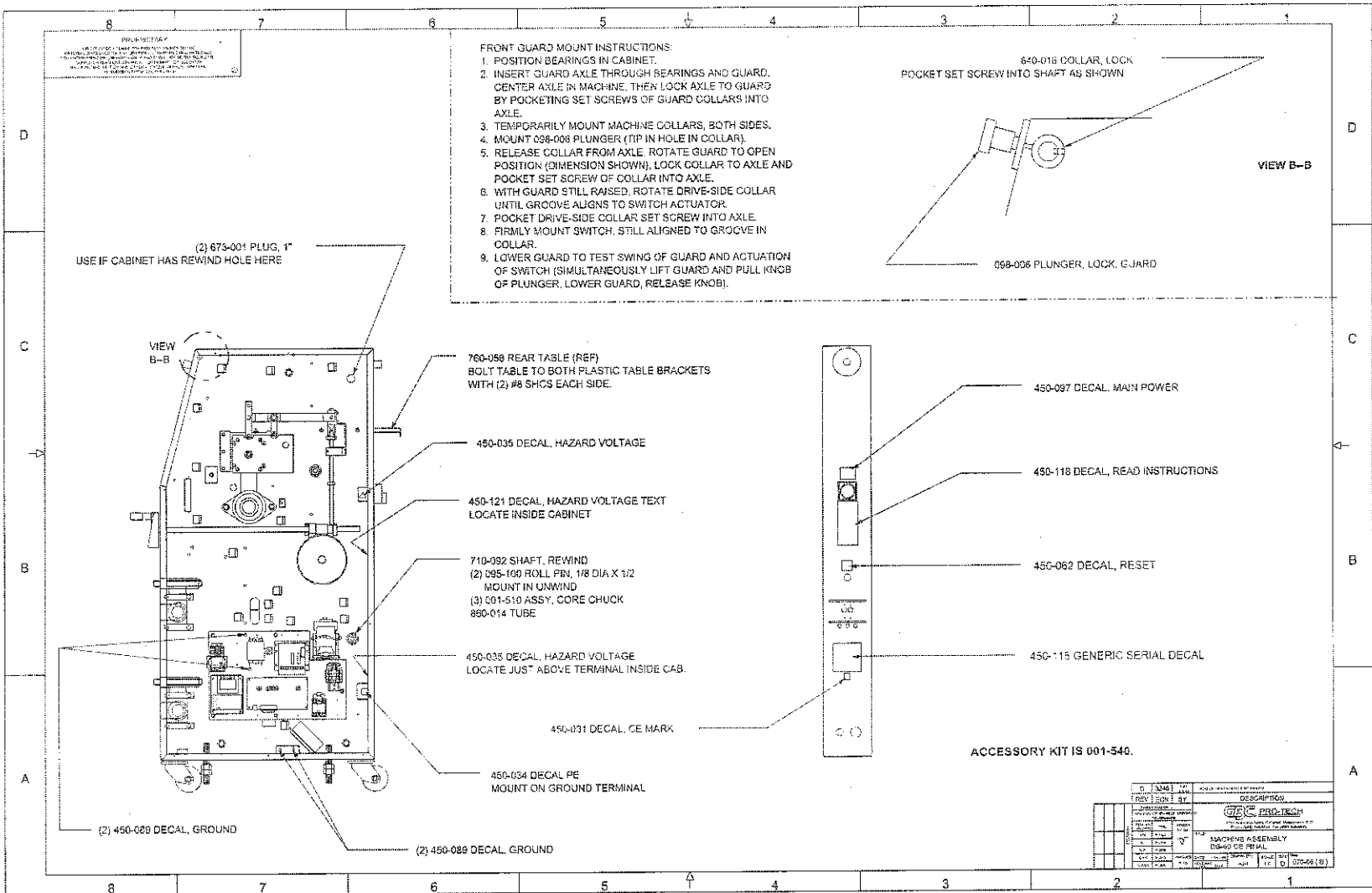
SHEET 1 OF 1		UNLESS OTHERWISE SPECIFIED TO DIMENSIONS		FINISH TO BE		DATE: 4-26-97		DRAWN BY: AJH		SCALE: 1:1		SIZE: B		Shp: 001-394	
GRASS	TOL	XX	F.104	X	F.105	XX	F.106	XX	F.107	XX	F.108	XX	F.109	XX	F.110
DATE: 4-26-97	RELEASE: 5/26	TITLE: IDLER DS-60		GBC PRO-TECH		415 Anderson Road, DuPont, Delaware 19822		Phone: (302) 348-8244 Fax: (302) 348-4948							

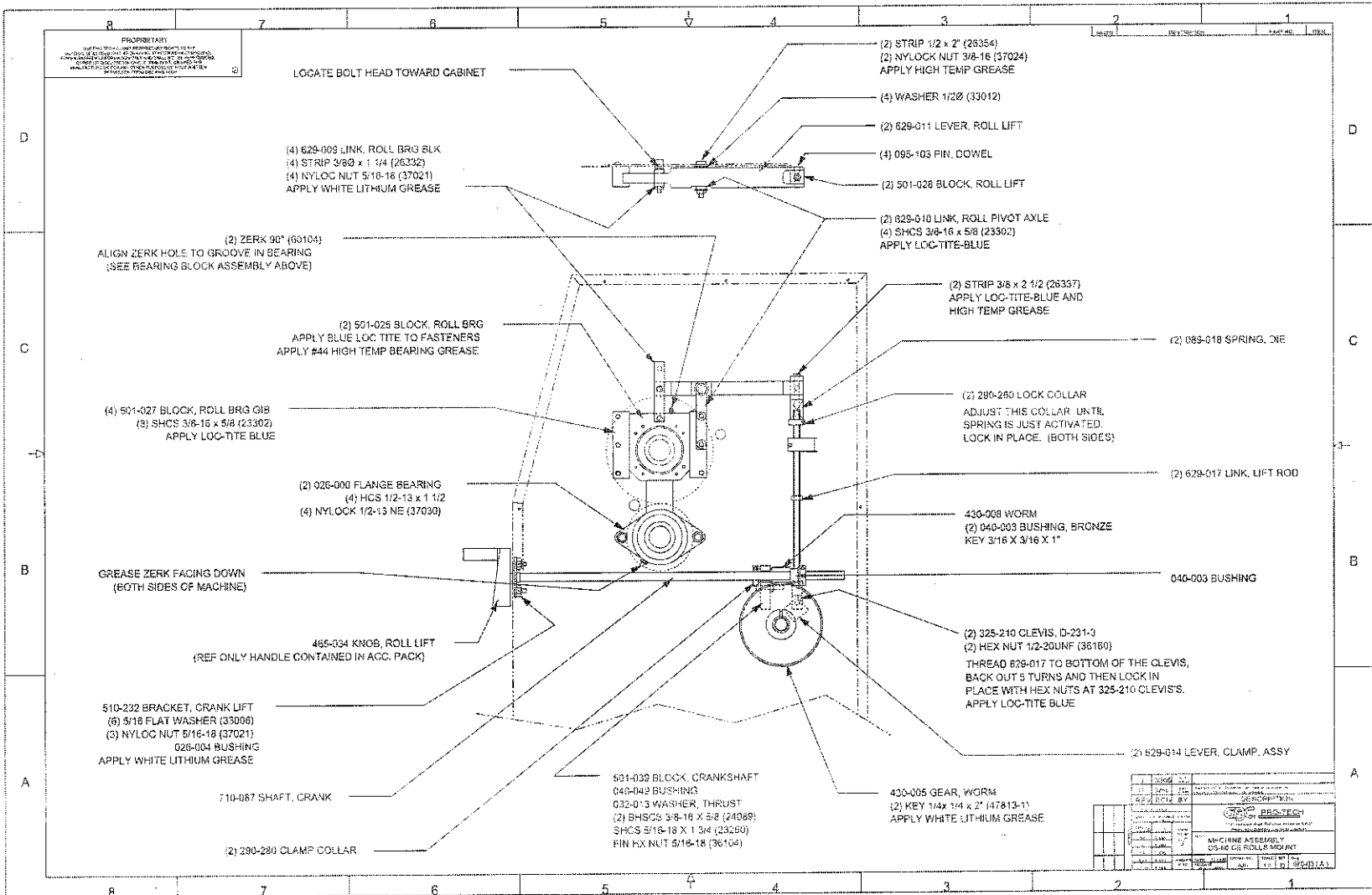


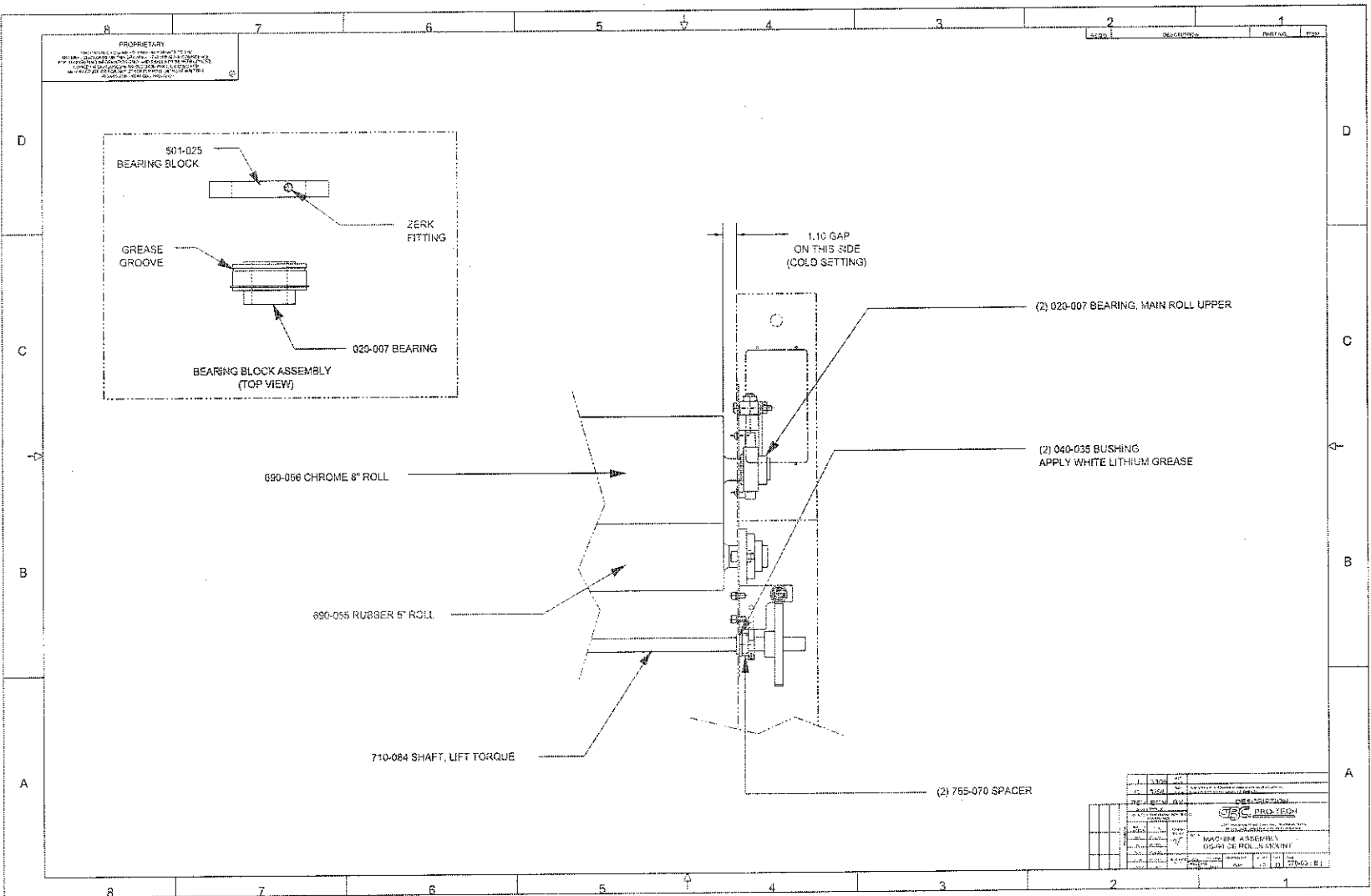




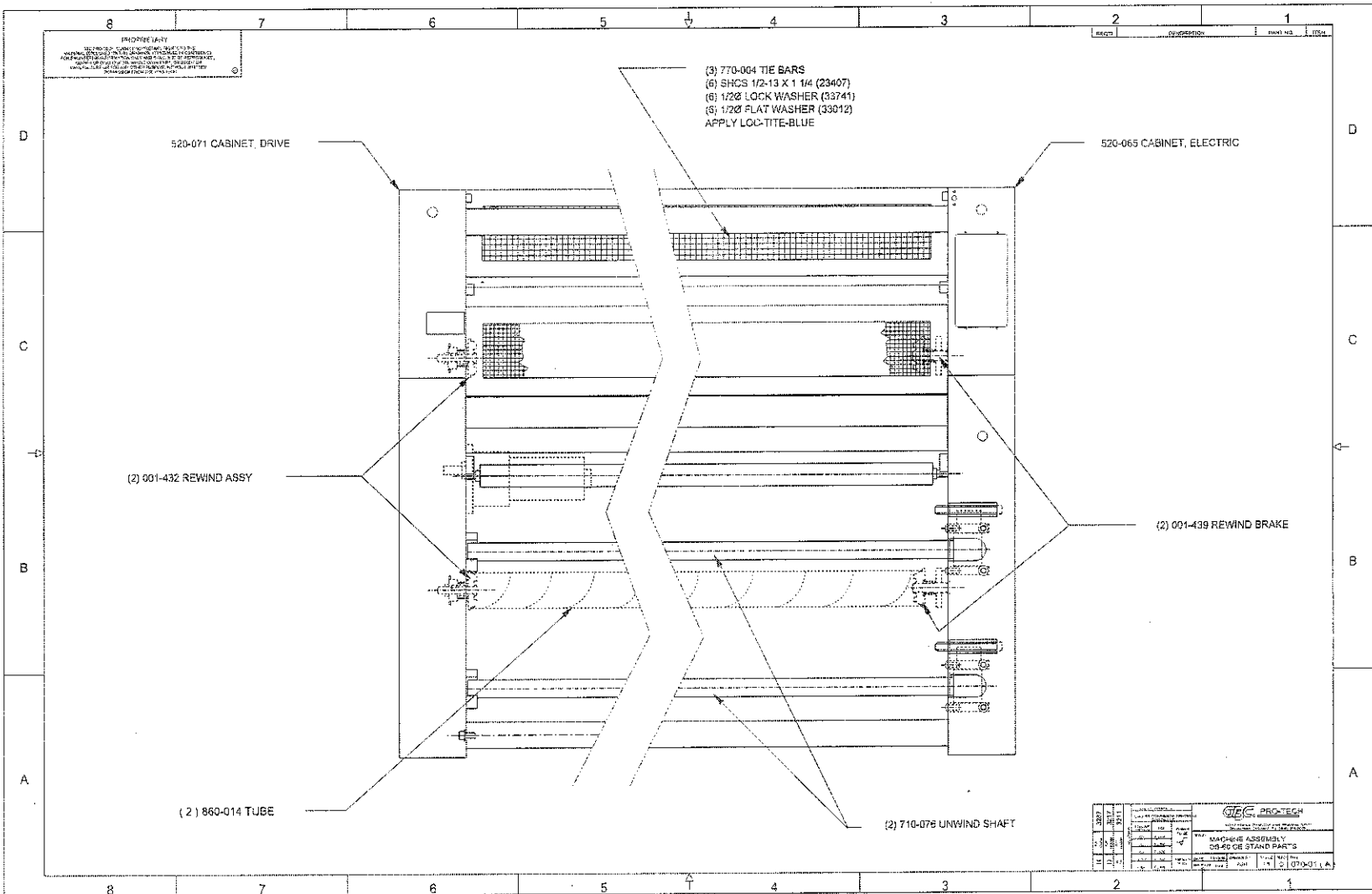


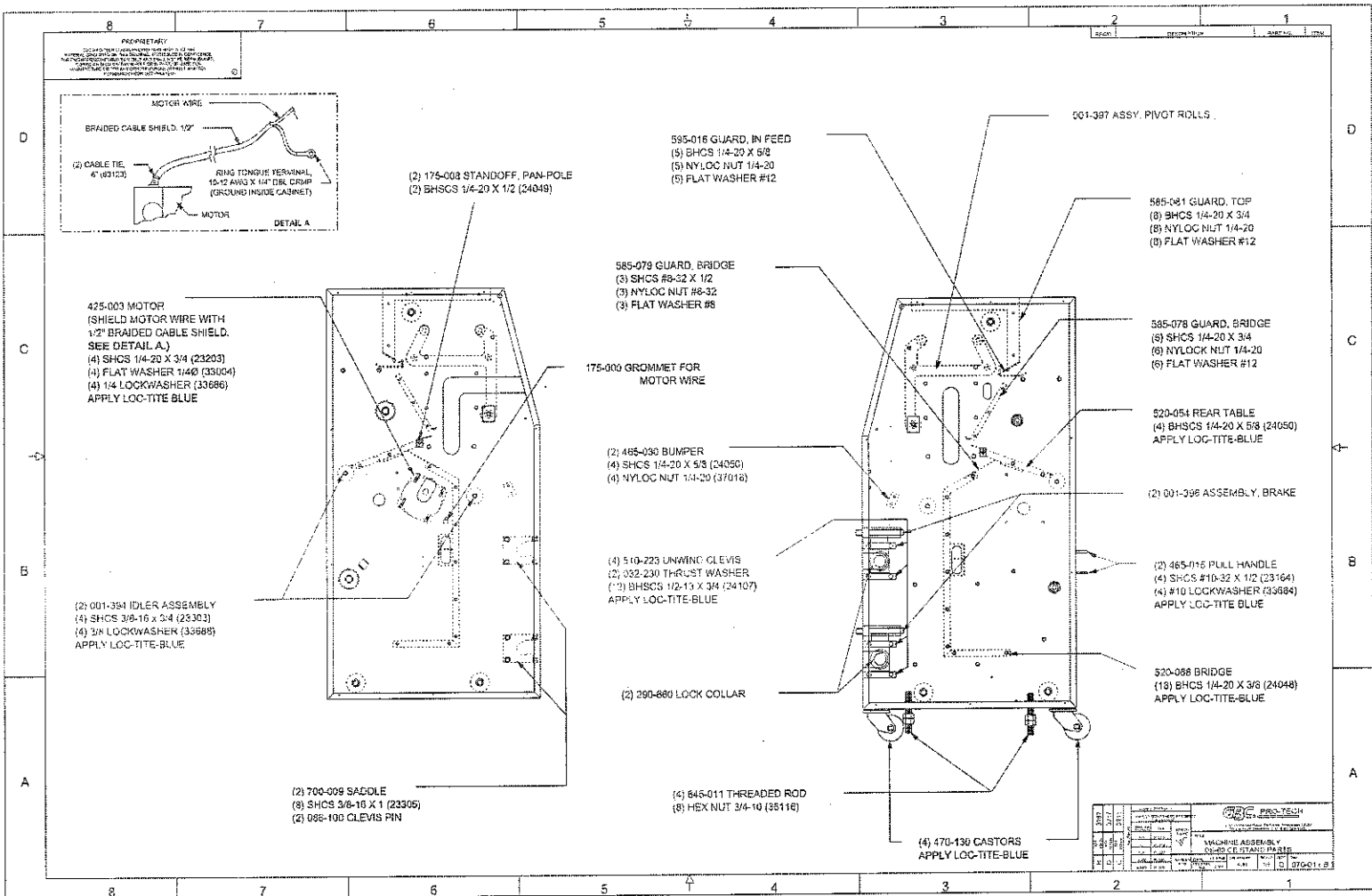


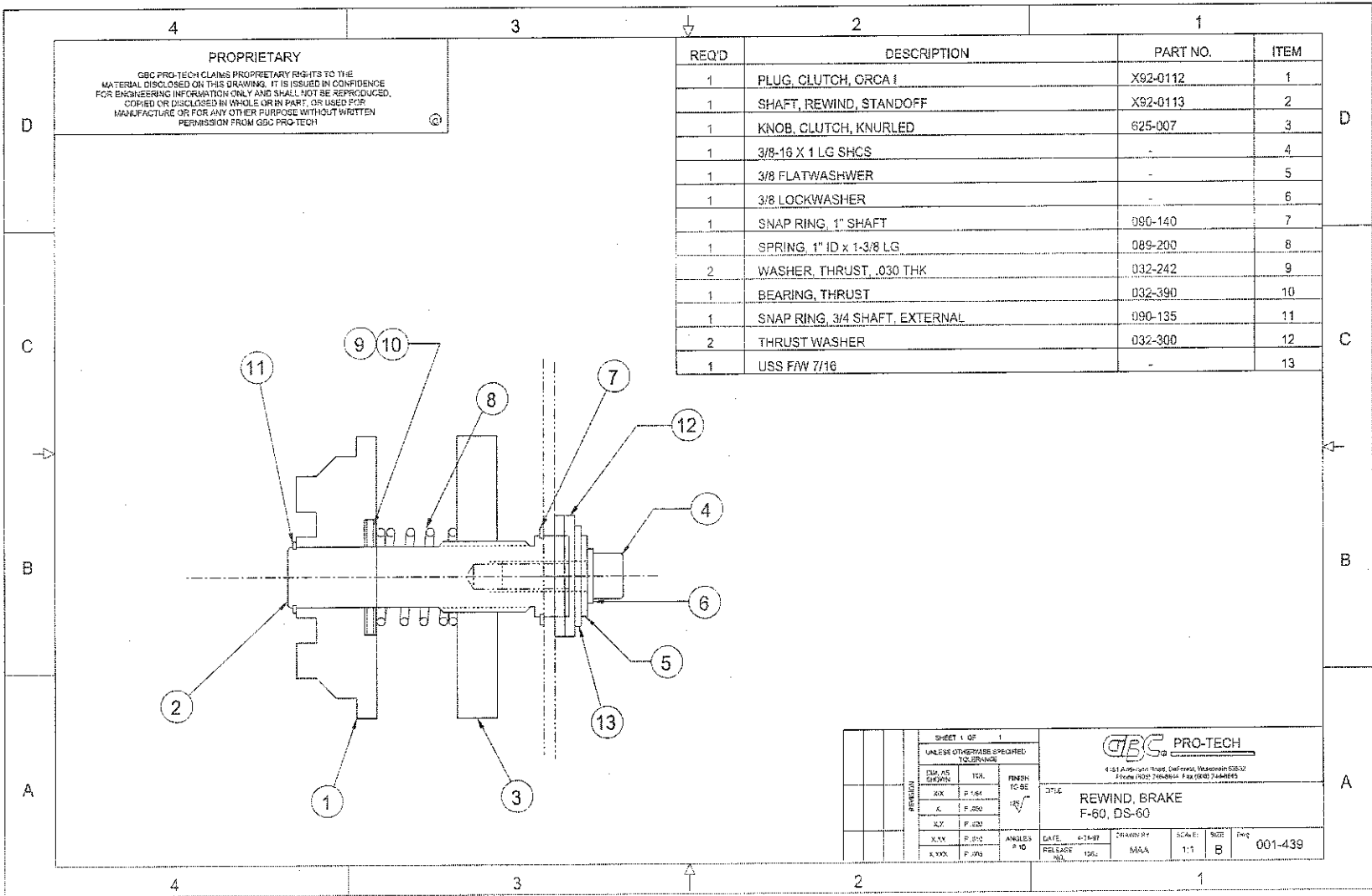




QTY	DESCRIPTION
2	020-007 BEARING, MAIN ROLL UPPER
2	040-035 BUSHING, APPLY WHITE LITHIUM GREASE
2	755-070 SPACER







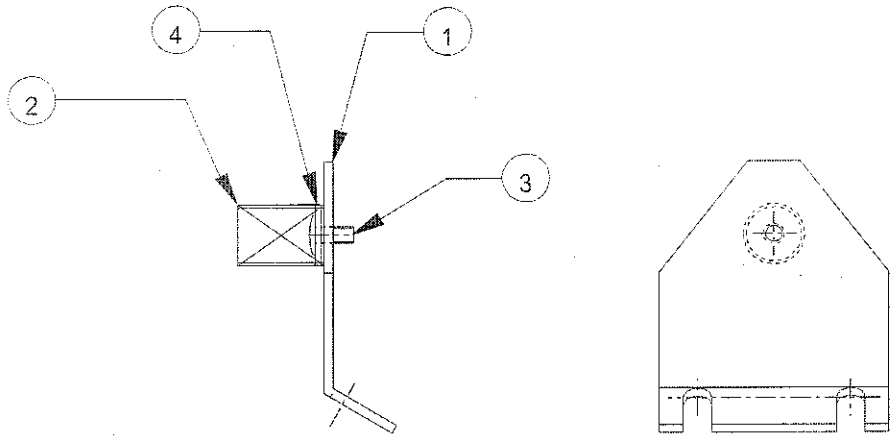
PROPRIETARY
 GBC PRO-TECH CLAIMS PROPRIETARY RIGHTS TO THE MATERIAL DISCLOSED ON THIS DRAWING. IT IS ISSUED IN CONFIDENCE FOR ENGINEERING INFORMATION ONLY AND SHALL NOT BE REPRODUCED, COPIED OR DISCLOSED IN WHOLE OR IN PART, OR USED FOR MANUFACTURE OR FOR ANY OTHER PURPOSE WITHOUT WRITTEN PERMISSION FROM GBC PRO-TECH

SHEET 1 OF 1		UNLESS OTHERWISE SPECIFIED TOLERANCE			
DIM. AS SHOWN		TOL.	FINISH	4151 Adams Road, Industrial, Westborough, MA 01581 Phone: (508) 746-6944 Fax: (508) 746-6949	
AX	F.154		125	REWIND, BRAKE F-60, DS-60	
X	F.250			DATE: 6-14-97	CH. BY: MAA
XY	F.120			SCALE: 1:1	SIZE: B
X.XY	F.125	ANGLES		RELEASE: 100%	FIG: 001-439
X.YXX	F.125	P.10			

REQ'D	DESCRIPTION	PART NO.	ITEM
1	SUPPORT, THERMOCOUPLE	757-026	1
1	SPRING	089-021	2
1	BHSCS #6-32 x 1/4	-	3
1	WASHER	-	4
1	INSTALLATION INSTRUCTIONS	820-151	5

PROPRIETARY
 GBC PRO-TECH CLAIMS PROPRIETARY RIGHT IN THE
 MATERIALS DISCLOSED ON THIS DRAWING. IT IS SOLELY FOR CONFERENCE
 FOR ENGINEERING INFORMATION ONLY AND SHALL NOT BE REPRODUCED,
 COPIED OR DISCLOSED BY ANY MEANS, IN ANY FORM, OR USED FOR
 MANUFACTURE OR FOR ANY OTHER PURPOSE WITHOUT WRITTEN
 PERMISSION FROM GBC PRO-TECH

FASTENAL #24016
 FASTENAL #33070



NOTES:
 1. PREASSEMBLE BEFORE PACKAGING
 FOR SHIPMENT.

SHEET 1 OF 1			 4151 Anderson Road, DeForest, Wisconsin 53532 Phone (608) 248-8844 Fax (608) 248-8846					
UNLESS OTHERWISE SPECIFIED TOLERANCE							TITLE: KIT, THERMOCOUPLE SUPPORT DS - 60	
REVISION	DIM AS SHOWN	TOL.	FINISH TO BE	DATE:	DRAWN BY:	SCALE:	SIZE:	Dwg:
	XX	P .004	125	1/13/98	AJH	1/1	A	005-024
	X	P .050		RELEASE NO				
	XX	P .020		1833				
	X XX	P .010	ANGLES P 1D					
	X XXX	P .005						