



DS 60 CE Parts List

GBC IS AN ACCO BRANDS COMPANY



DS 60 CE
Illustrated Parts Booklet
(000 - 070)

© GBC Films Group, December 2000
Do not duplicate without written permission

Booklet #: DS60CEPB001

GBC Films Group
4151 Anderson Road
DeForest, WI 53532
Ph: (608) 246 - 8844
Fx: (608) 246 - 8645

Links to Content

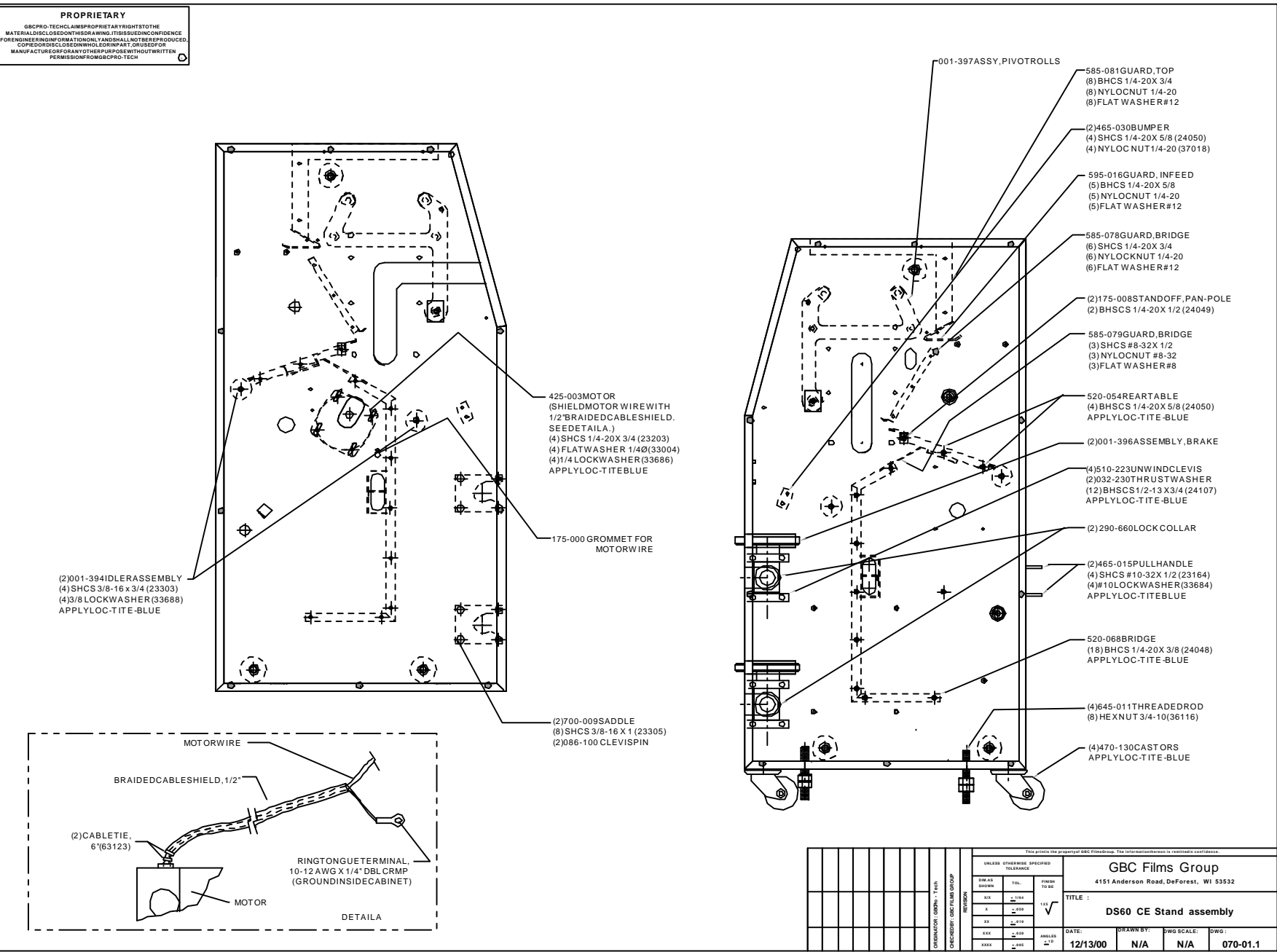
Drawing number :	Drawing Title:	Page number:
070 - 01.1	Stand assembly	1 - 1
070 - 01.2	Front and rear view	1 - 2
070 - 02.0	Drive side	1 - 3
070 - 03.0	Control side	1 - 4
070 - 04.1	Control side - electrical	1 - 5
070 - 04.2	Drive side - electrical	1 - 6
070 - 05.1	Electrical panel assembly 001-539	1 - 7
070 - 05.2	Wire assembly	1 - 8
070 - 06.1	Cabinets and decals	1 - 9
070 - 06.2	E-stops and control panel	1 - 10

Drawing number :

Drawing Title:

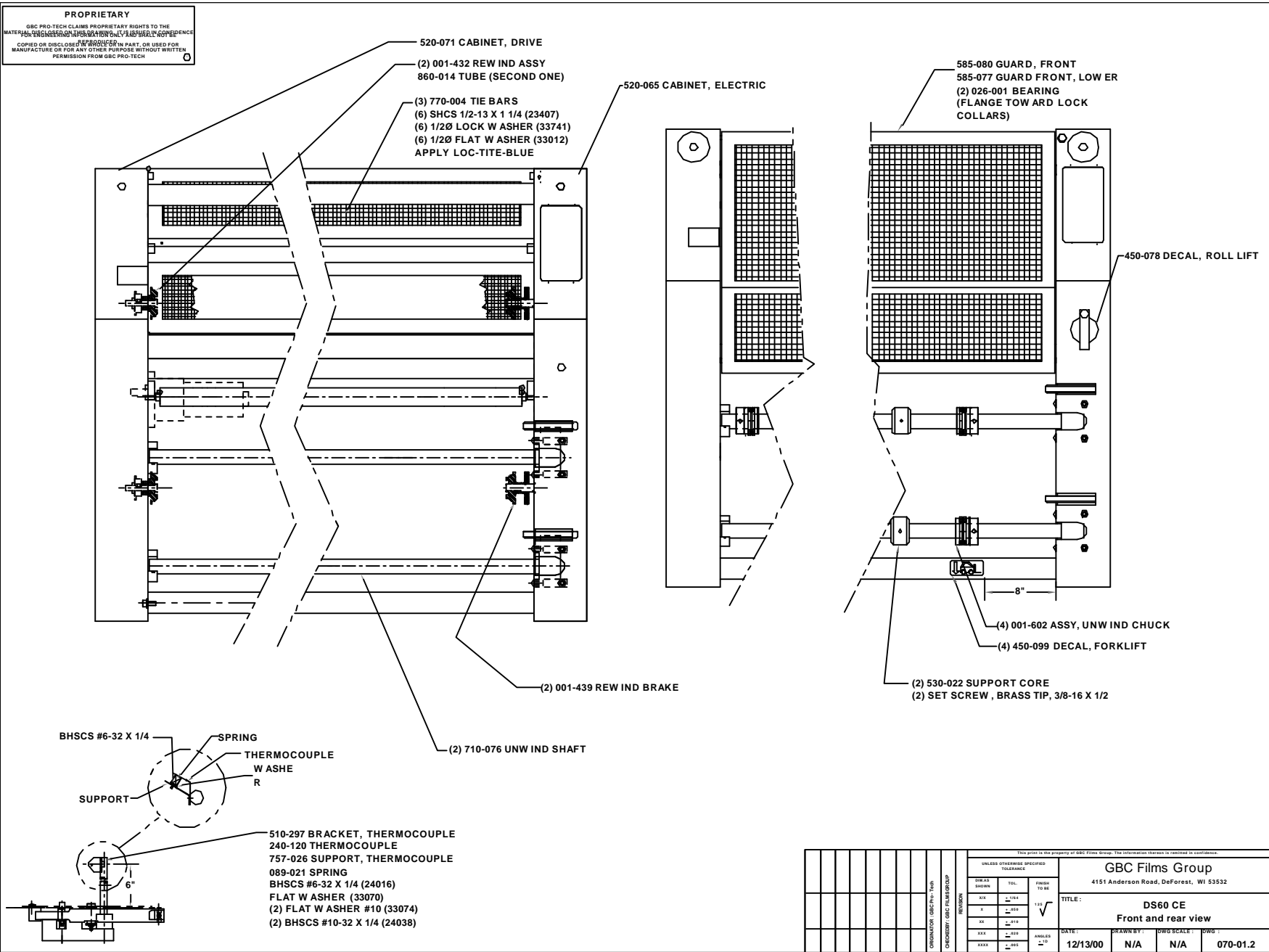
Page number:

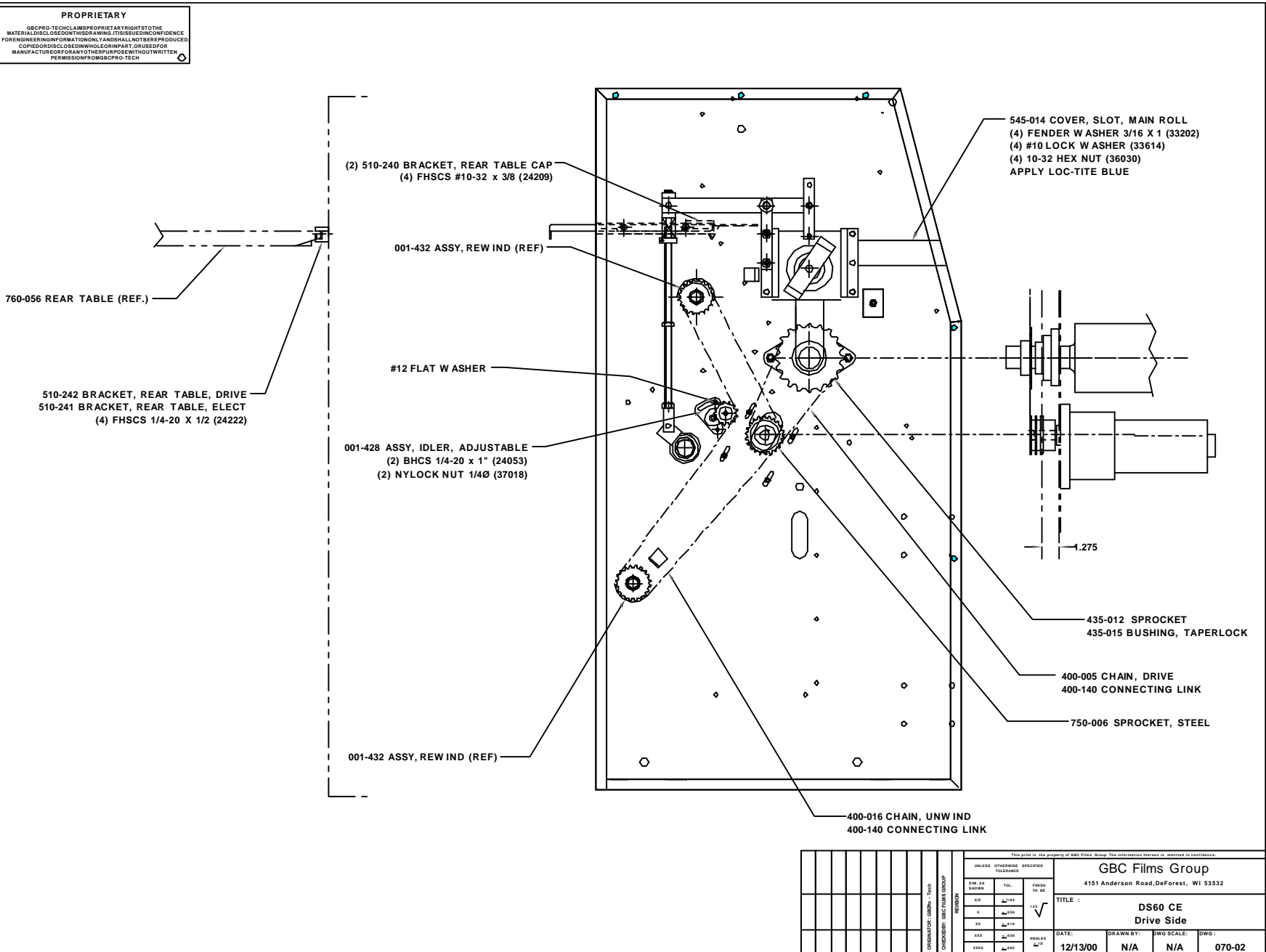
This page intentionally left blank.



UNLESS OTHERWISE SPECIFIED TOLERANCE				FRACTION TO BE	
DIM AS SHOWN	TOL.	FRACTION	TO BE		
XIV	±.004	1/32	✓		
X	±.005				
XX	±.010				
XXX	±.020				
XXXX	±.050				

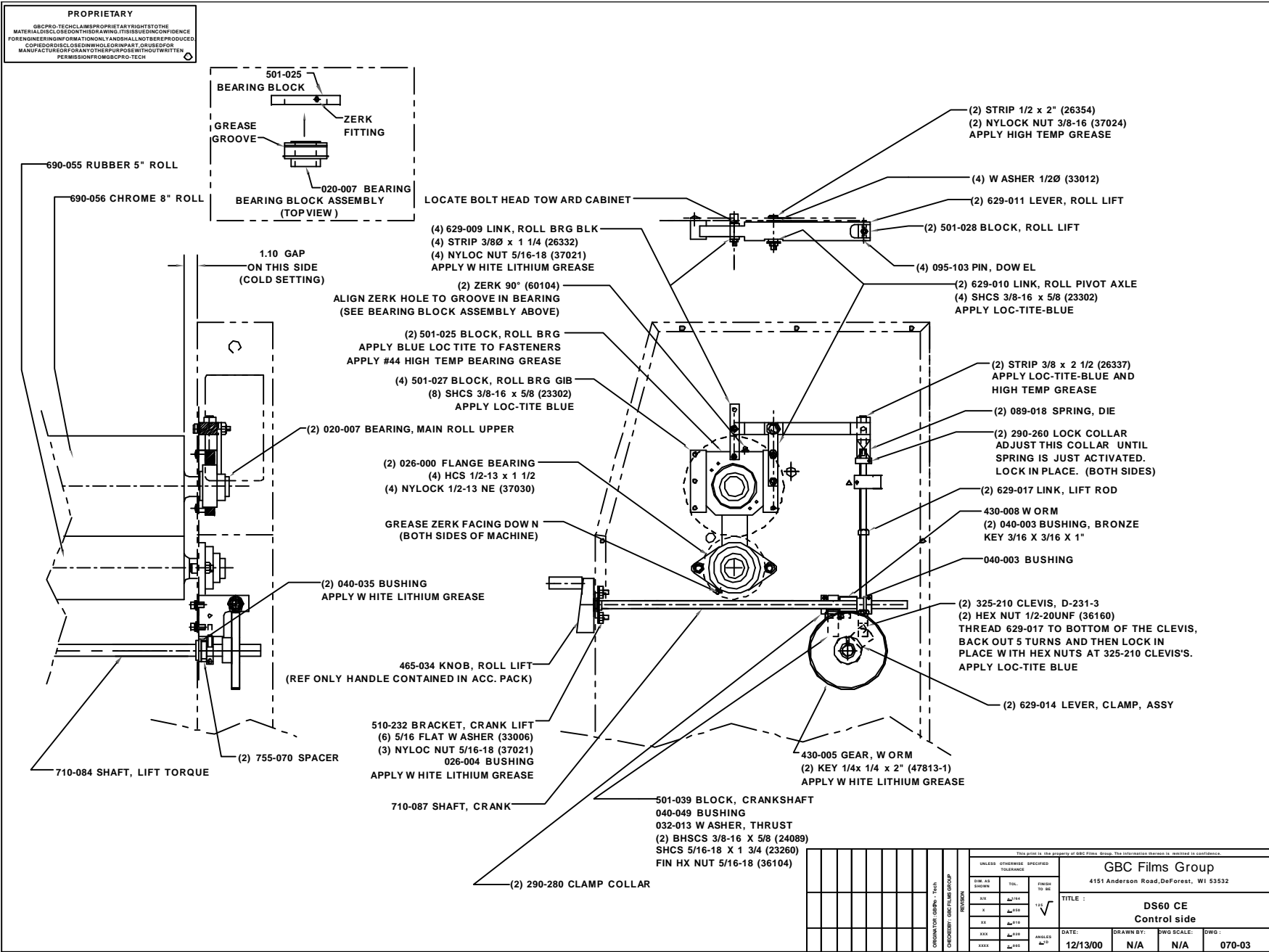
GBC Films Group 4151 Anderson Road, DeForest, WI 53532	
TITLE : DS60 CE Stand assembly	
DATE: 12/13/00	DRAWN BY: N/A
DWG SCALE: N/A	DWG NO: 070-01-1

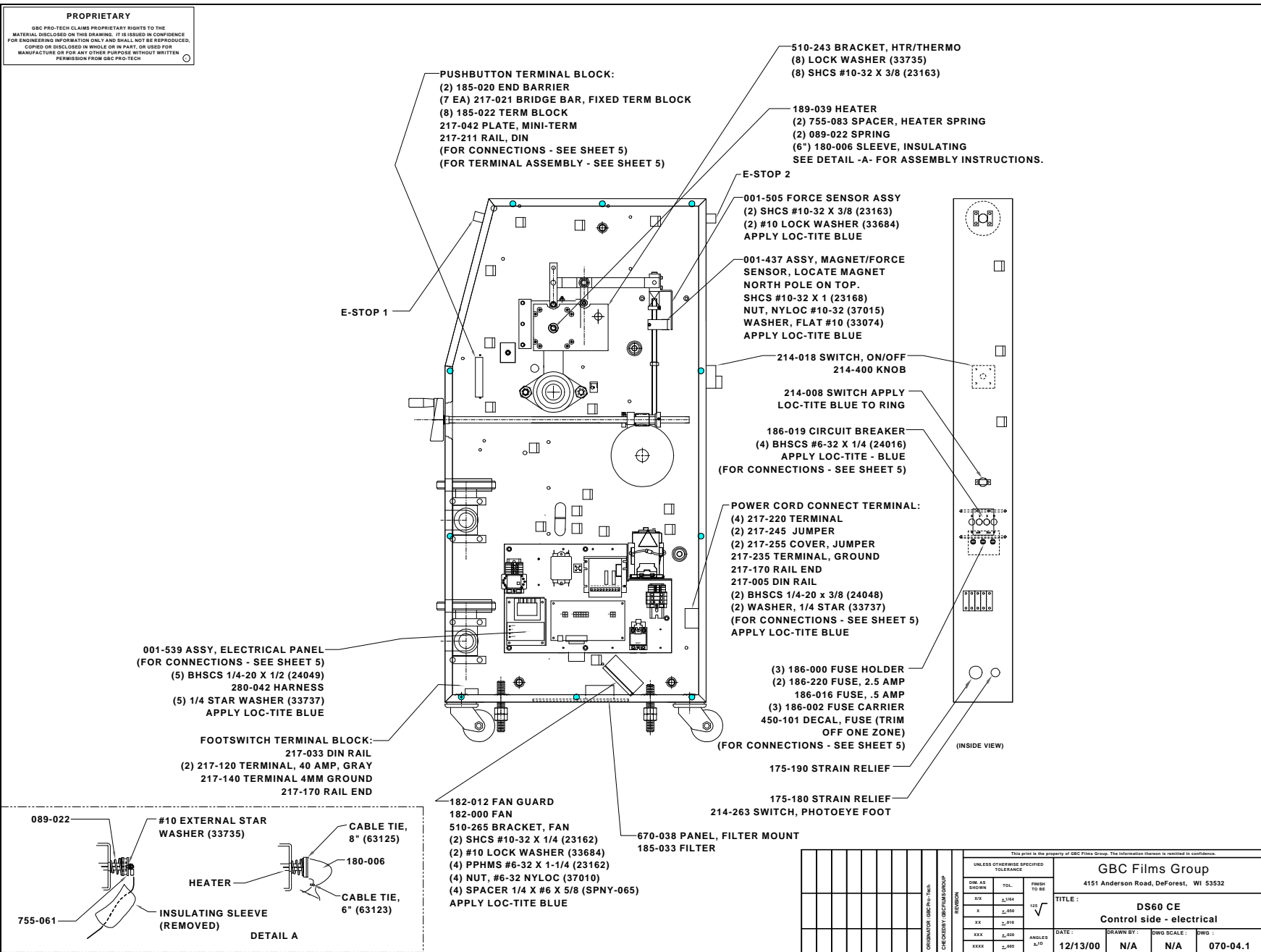




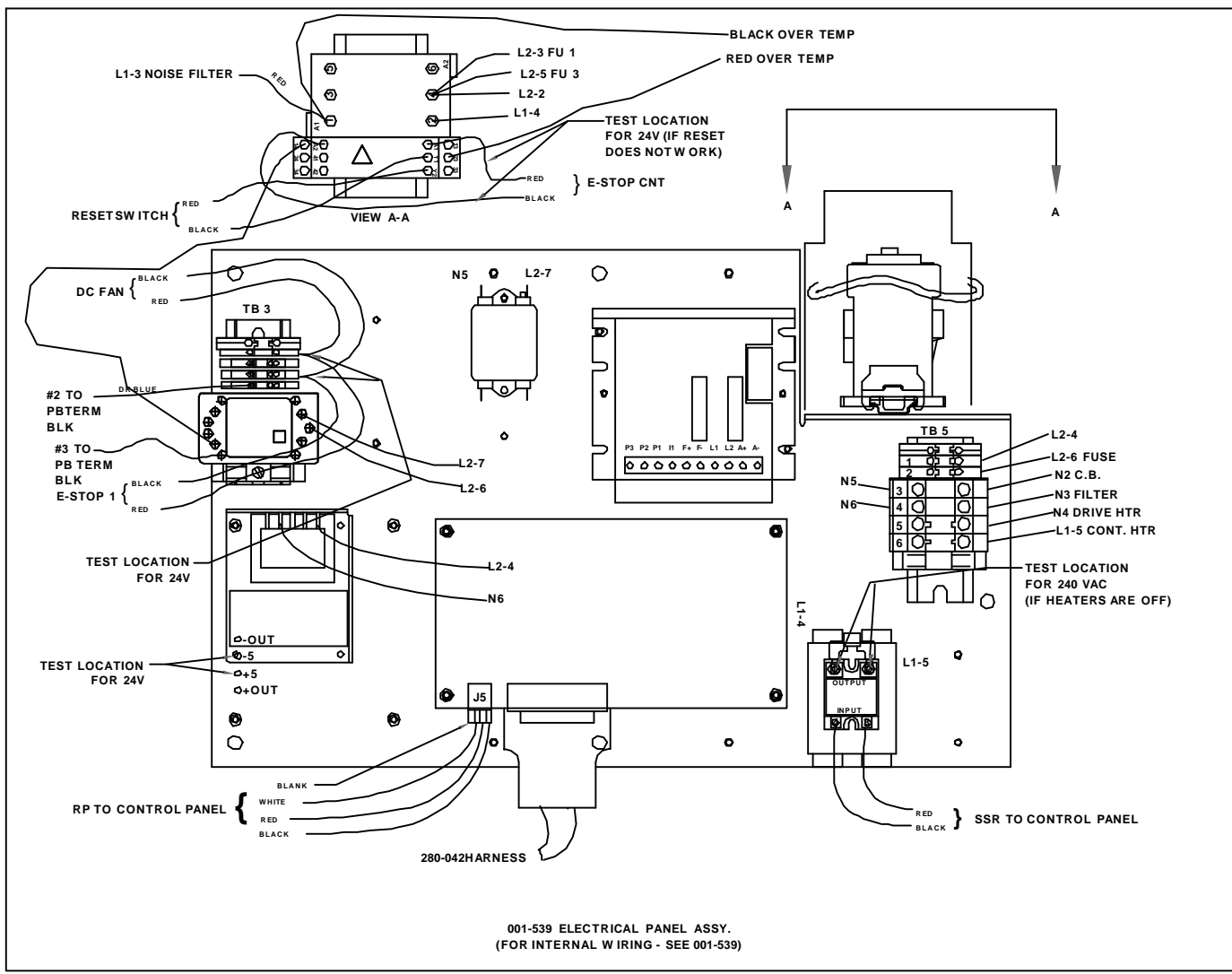
PROPRIETARY
 GBCPRO-TECH CLAIMS PROPRIETARY RIGHT TO THE MATERIAL DISCLOSED IN THIS DRAWING. THIS INFORMATION IS FOR ENGINEERING INFORMATION ONLY AND SHALL NOT BE REPRODUCED, COPIED, OR DISCLOSED IN ANY MANNER WITHOUT THE WRITTEN PERMISSION FROM GBCPRO-TECH.

UNLESS OTHERWISE SPECIFIED TOLERANCES				GBC Films Group 4151 Anderson Road, DeForest, WI 53532			
SIZE AS SHOWN	TOL.	FINISH	TO BE	TITLE: DS60 CE Drive Side			
Ø	±.004			DATE:	DRAWN BY:	DWG SCALE:	DWG NO:
X	±.010			12/13/00	N/A	N/A	070-02
XX	±.015						
XXX	±.030						
XXXX	±.060						





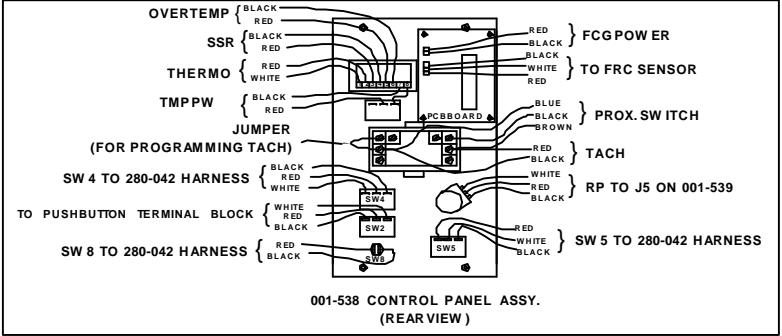
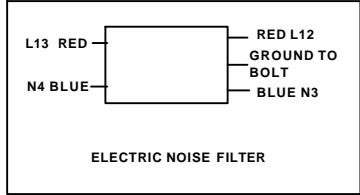
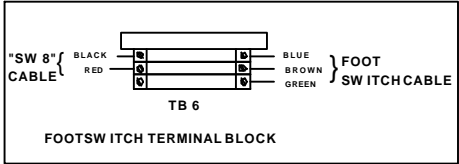
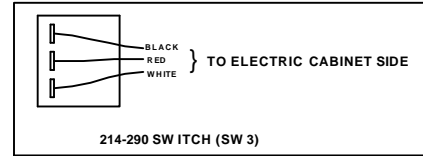
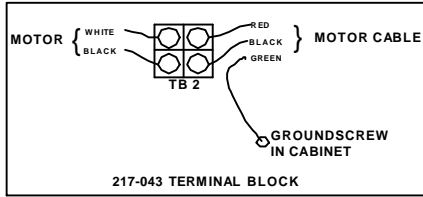
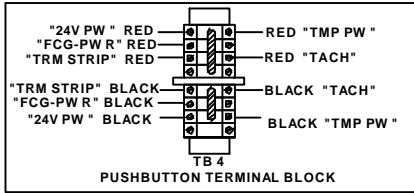
PROPRIETARY
 GBC FILM TECH CLAIMS PROPRIETARY RIGHTS TO THE MATERIALS DISCLOSED IN THIS DRAWING. IT IS SUBJECT TO CONFIDENTIALITY AND SHALL NOT BE REPRODUCED OR COPIED OR DISCLOSED IN WHOLE OR IN PART, OR USED FOR MANUFACTURE OR FOR ANY OTHER PURPOSE WITHOUT WRITTEN PERMISSION FROM GBC FILM TECH.



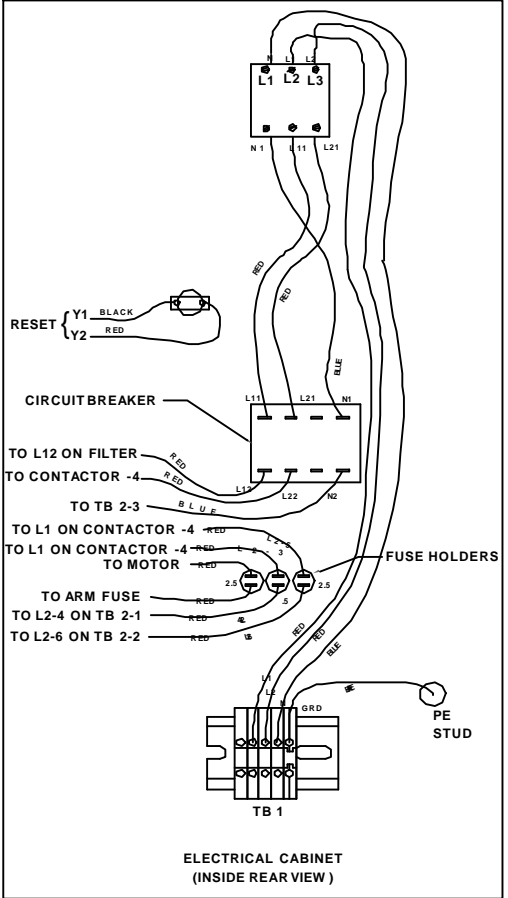
001-539 ELECTRICAL PANEL ASSY.
 (FOR INTERNAL WIRING - SEE 001-539)

UNLESS OTHERWISE SPECIFIED TOLERANCE				GBC Films Group 4151 Anderson Road, DeForest, WI 53532			
SIZE	TOL.	FRACTION	DECIMAL	TITLE : DS60 CE			
1/16"	±.004	1/16"	0.0625	Electrical panel assembly 001-539			
1/8"	±.005	1/8"	0.125	DATE:	DRAWN BY:	DWG SCALE:	DWG :
3/16"	±.006	3/16"	0.1875	12/13/00	N/A	N/A	070-05.1
1/2"	±.008	1/2"	0.500	ANGLES: 10°			
3/4"	±.010	3/4"	0.750				
1"	±.012	1"	1.000				
1 1/4"	±.015	1 1/4"	1.500				
1 1/2"	±.018	1 1/2"	1.875				
2"	±.020	2"	2.000				
2 1/2"	±.025	2 1/2"	2.500				
3"	±.030	3"	3.000				
3 1/2"	±.035	3 1/2"	3.500				
4"	±.040	4"	4.000				
4 1/2"	±.045	4 1/2"	4.500				
5"	±.050	5"	5.000				
5 1/2"	±.055	5 1/2"	5.500				
6"	±.060	6"	6.000				
6 1/2"	±.065	6 1/2"	6.500				
7"	±.070	7"	7.000				
7 1/2"	±.075	7 1/2"	7.500				
8"	±.080	8"	8.000				
8 1/2"	±.085	8 1/2"	8.500				
9"	±.090	9"	9.000				
9 1/2"	±.095	9 1/2"	9.500				
10"	±.100	10"	10.000				

PROPRIETARY
 GBCPRO-TECH CLAIMS PROPRIETARY RIGHTS TO THE MATERIAL DISCLOSED ON THIS DRAWING. IT IS BEING DISCLOSED IN CONFIDENCE FOR ENGINEERING INFORMATION ONLY AND SHALL NOT BE REPRODUCED, COPIED, OR DISCLOSED IN WHOLE OR IN PART, OR USED FOR MANUFACTURE OR FOR ANY OTHER PURPOSE WITHOUT WRITTEN PERMISSION FROM GBCPRO-TECH.

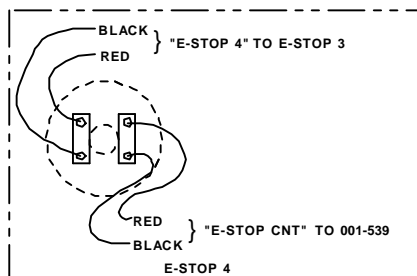
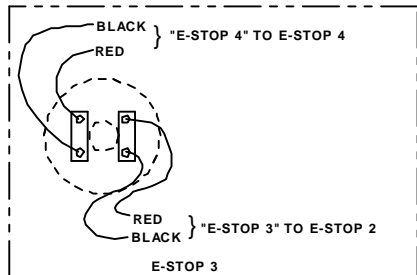
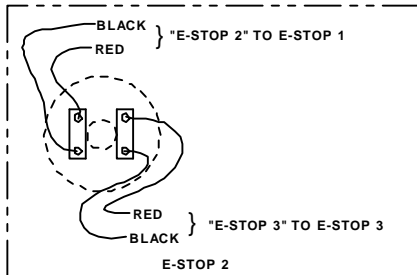
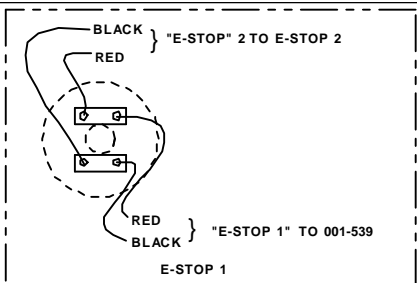


- NOTES:**
 1. ELECTRIC SCHEMATIC IS 810-046.
 2. WIRING HARNESS IS 280-042.



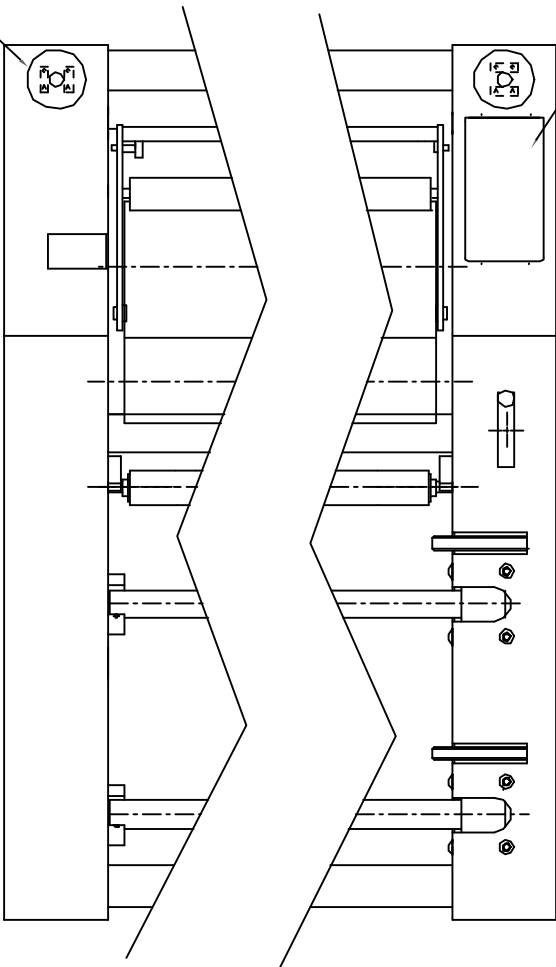
UNLESS OTHERWISE SPECIFIED TOLERANCE		FINISH TO BE		GBC FILMS GROUP	
DRW. AS SHOWN	FOL.	114	114	GBC FILMS GROUP	
XX	114	114	114	GBC FILMS GROUP	
X	114	114	114	GBC FILMS GROUP	
XX	114	114	114	GBC FILMS GROUP	
XXX	114	114	114	GBC FILMS GROUP	
XXXX	114	114	114	GBC FILMS GROUP	

GBC Films Group 4151 Anderson Road, DeForest, WI 53532			
TITLE: DS60 CE Wire assembly			
DATE: 12/13/00	DRAWN BY: N/A	DWG. SCALE: N/A	DWG. NO.: 070-05.2



001-538 ASSY. CONTROL PANEL
 (FOR CONNECTIONS - SEE SHEET 5)
 (FOR ADJUSTMENT PROCEDURE
 - SEE 820-067)
 (4) BHSCS #8-32 X 3/8 (24023)

(4) 450-098 DECAL, E-STOP
 (4) 214-313 PUSHBUTTON, E-STOP
 (8) 214-314 CONTACT BLOCK, E-STOP (2 PER SWITCH)
 (FOR CONNECTIONS - SEE SHEET 5)



PROPRIETARY
 GBCPRO-TECH CLAIMS PROPRIETARY RIGHTS TO THE
 MATERIALS, DESIGN, DRAWING, IT IS SUBJECT TO CONFIDENCE
 FOR ENGINEERING INFORMATION ONLY AND SHALL NOT BE REPRODUCED
 COPIED OR DISCLOSED IN WHOLE OR IN PART, OR USED FOR
 MANUFACTURE OF GOODS WITHOUT THE WRITTEN
 PERMISSION FROM GBCPRO-TECH

UNLESS OTHERWISE SPECIFIED TOLERANCE				GBC Films Group 4151 Anderson Road, DeForest, WI 53532			
FR	AS	TOL.	FINISH	TITLE: DS60 CE E-stops and control panel			
XXX	XXX	±.004	112	DATE:	DRAWN BY:	DWG SCALE:	DWG:
XX	XX	±.010		12/13/00	N/A	N/A	070-06.2
XXX	XXX	±.010					
XXXX	XXXX	±.004					