



CI12 - 2

Parts List



GBC IS AN ACCO BRANDS COMPANY

55	COIL 33MM X 12"- 4:1 BLCK 100P	A/R	9665130
54	COIL 16MM X 12"- 4:1 WHITE 100P	A/R	9665071
53	COIL 6MM X 12" - 4:1 BLCK 100P	A/R	9665000
52	LABEL CSA NRTL/C	1	6009078
51	LABEL SHOCK DOM	1	6009146
50	SHELF, TOP	1	0480037000
49	SHIELD, UPPER	1	0480097400
48	GUARD, LOUVERED	1	0480036600
47	AXLE - 3/8"	1	0330002700
46	COLLAR - SET 3/8 I.D. CLAMPTITE#15010	2	0750001000
45	WASHER, BRONZE OILITE #TW-37	2	0750196700
44	O-RING, PYRAMID# .210 DIA X 10" 83A	1	0750109600
43	ROLLER ASY., LARGE	1	0321004400
42	PIVOT BRACKET - L/H	1	0330008800
41	SIDE PLATE, CI12 - LH	1	0330007900
40	WASHER, BRONZE OILITE #TT-400	2	0750194200
39	O-RING, PYRAMID# .139 DIA X 10" 83A	1	0750100300
38	ROLLER ASY., SMALL	1	0321004300
37	TY-WRAP	2	1932121
36	ADHESIVE BACK	1	1931049
35	NUT - KEP 10-24	3	1926806
34	BHCS 10-24X3/8 STAINLESS	3	0750935100
33	L&T.,3.5"X18GAX1/4FEMX3/16FEM	2	7405202
32	SCREW, SELF TAPING PH HD, #6-32X3/8"	1	0753377500
31	NUT, HEX JAM 1/4-20	2	1926602
30	LOCK WASHER 1/4"	2	1926018
29	WASHER FLAT 1/4 NOM.	2	1925005
28	SCREW, FHCS 1/4-20X1" STAINLESS	2	0750865100
27	MOTOR ASY, CI12 115V	1	0322020000
26	GUARD, FRONT	1	0480097300
SEQ.	DESCRIPTION	QTY.	PART NO.

25	STRAIN RELIEF, CORD	1	0220131000
24	LINE CORD W/ TERMINALS	1	9781346
23	FUSE 5 AMP.	1	1970133
22	FUSE HOLDER	1	1132343
21	BHCS 1/4-20X3/8 STAINLESS	9	0750940100
20	SSS #6-32 X 1/8	2	1900019
19	SCREW, SHOULDER 1/4 DIA X 1	2	0750231500
18	SPRING	2	0750030200
17	KNOB, PULL	2	0321003200
16	WASHER, SPRING	1	1926311
15	SCREW, SHOULDER 1/4 DIA X 1/8	2	0750230100
14	PIVOT BRACKET - R/H	1	0330002100
13	TOGGLE SWITCH	1	0220017600
12	PLATE, ON/OFF	1	0480016500
11	LABEL, ON/OFF	1	0480004200
10	DECAL, FUSE	1	0480002300
9	DECAL, CAUTION	1	6009261
8	LABEL, GROUND	1	1128416
7	SIDE PLATE, CI12 - RH	1	0330007800
6	FHCS 1/4-20 X 3/4	4	0750864600
5	SUPPORT BAR - NOTCHED	1	0321004500
4	FHCS 1/4-20 X 5/8	2	0750864400
3	SUPPORT BAR	2	0321000600
2	BUMPER/FOOT, SELF ADHESIVE	4	1954506
1	BASE	1	0480036200
SEQ.	DESCRIPTION	QTY.	PART NO.

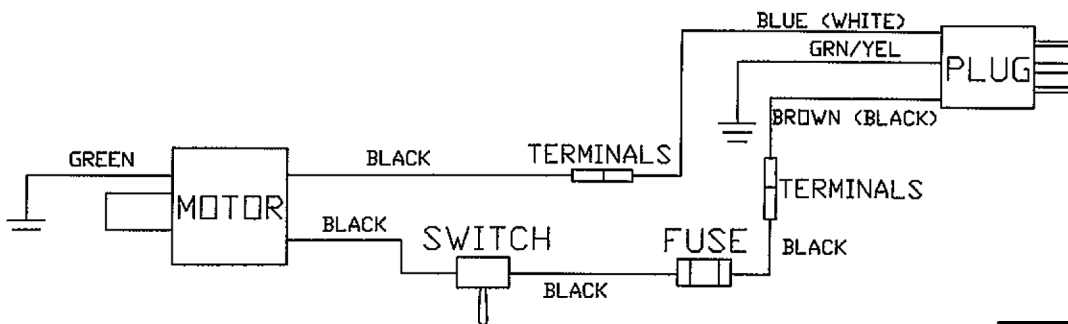
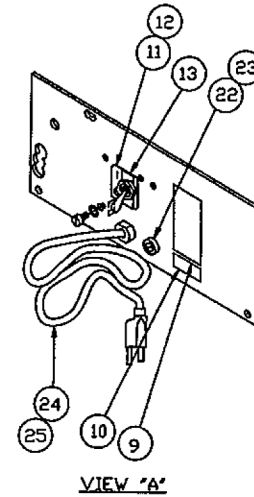
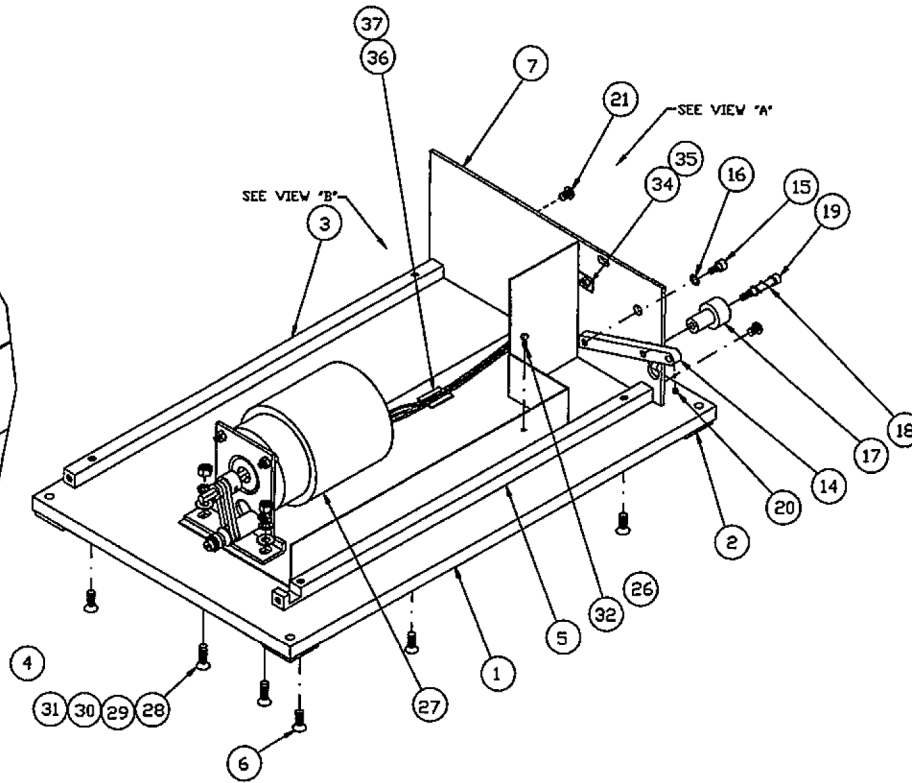
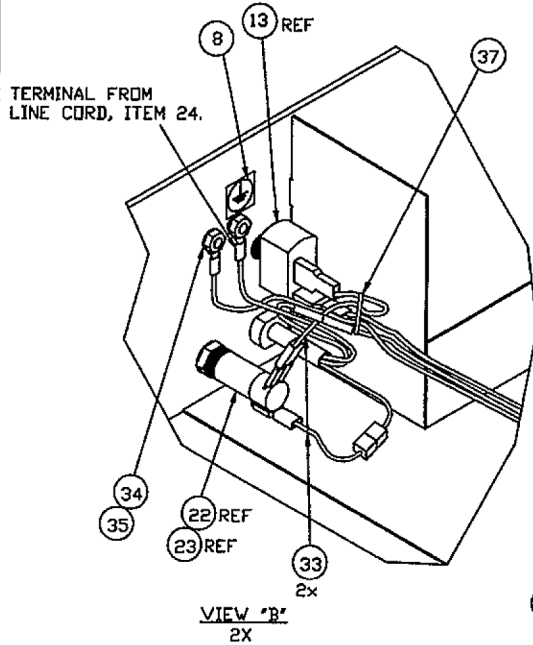
PART TO BE FREE OF BURRS, SHARP EDGES AND SHARP CORNERS		ALL DIMENSIONS AFTER PLATING		ALL THREADS MUST BE UNIFIED FORM CLASS 2		DIXI NUT SCALE PRI	
UNLESS OTHERWISE SPECIFIED THE FOLLOWING SPECIFICATIONS APPLY:				MATERIAL	DR BY	GMG	012800
MACHINE SURFACE FINISH		✓ TOLERANCES		FRACTIONS ± 1/64			
HEAT TREAT		HARDNESS		DECIMALS ± .005 ±.000		FINISH	
				± .01 ±.00X			
				ANGULAR ± 0° 30'		APP BY	
				DRAFT ANGLES 10X		HC 8-19-01	
GEOMETRIC SYMBOLS				THIS PRINT IS THE PROPERTY OF AND WAS ORIGINATED BY GENERAL			
○ CONCENTRICITY		// PARALLELISM		BIDDING CORP. AND IS FURNISHED FOR ENGINEERING INFORMATION AND			
⊕ TRUE POSITION		∠ ANGULARITY		REFERENCE ONLY. GBC RESERVES ALL PATENT, PROPRIETARY, DESIGN,			
↺ RUNOUT		□ FLATNESS		USE, SALE, MANUFACTURING AND REPRODUCTION RIGHTS THEREIN.			
⊥ PERPENDICULARITY				SIZE: C			
				SCALE		7405001	
						SHT. OF	



FINAL ASSY.,
CI-12-2
115V W/O KNIFE
7405001

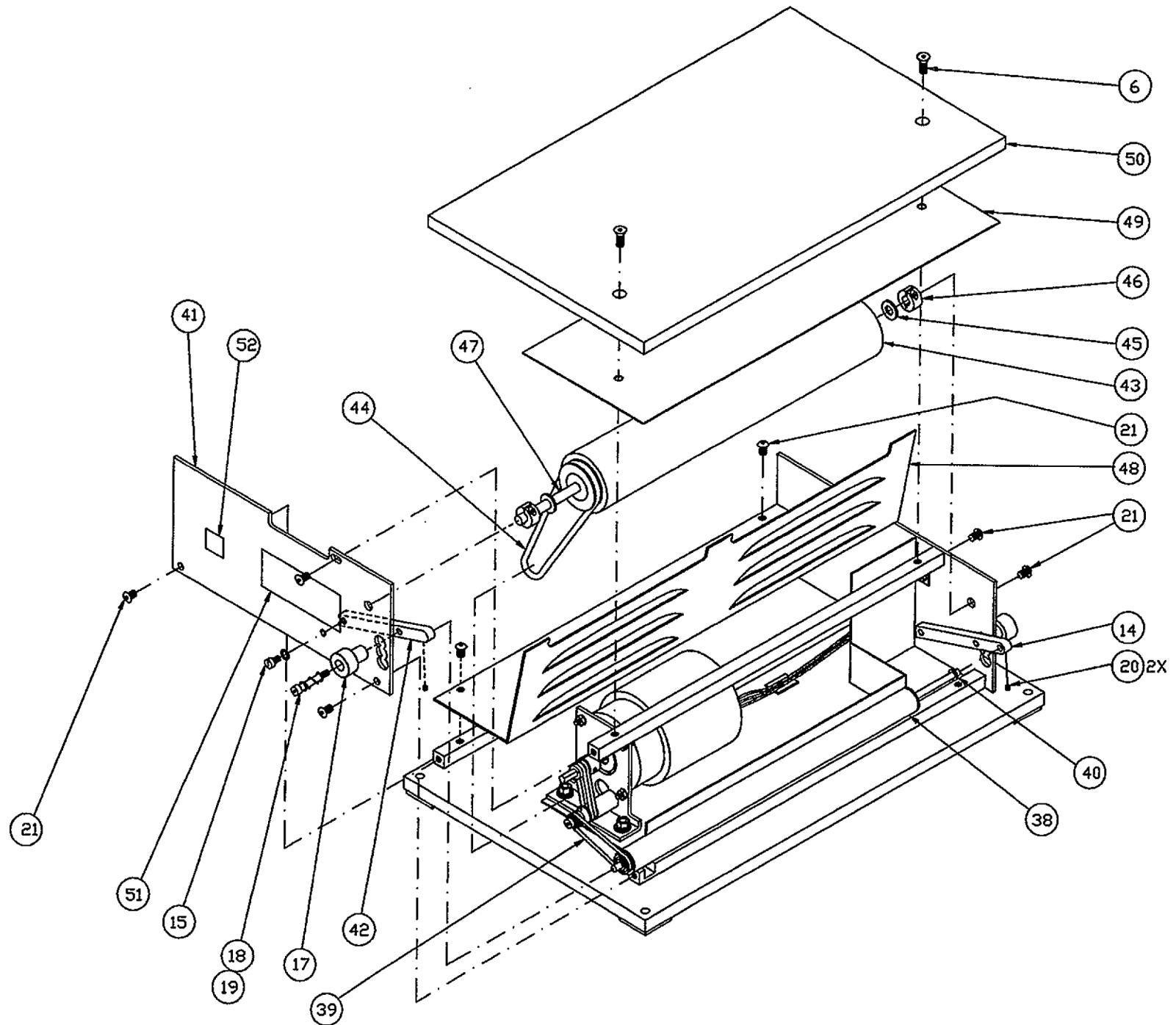
7405001

LETTER	E.C.N.
A1	E00089 REFI
B1	E10410 REPL



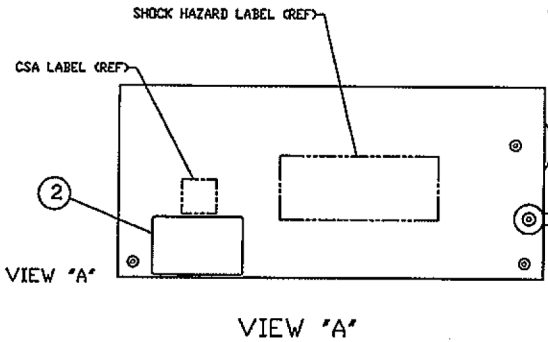
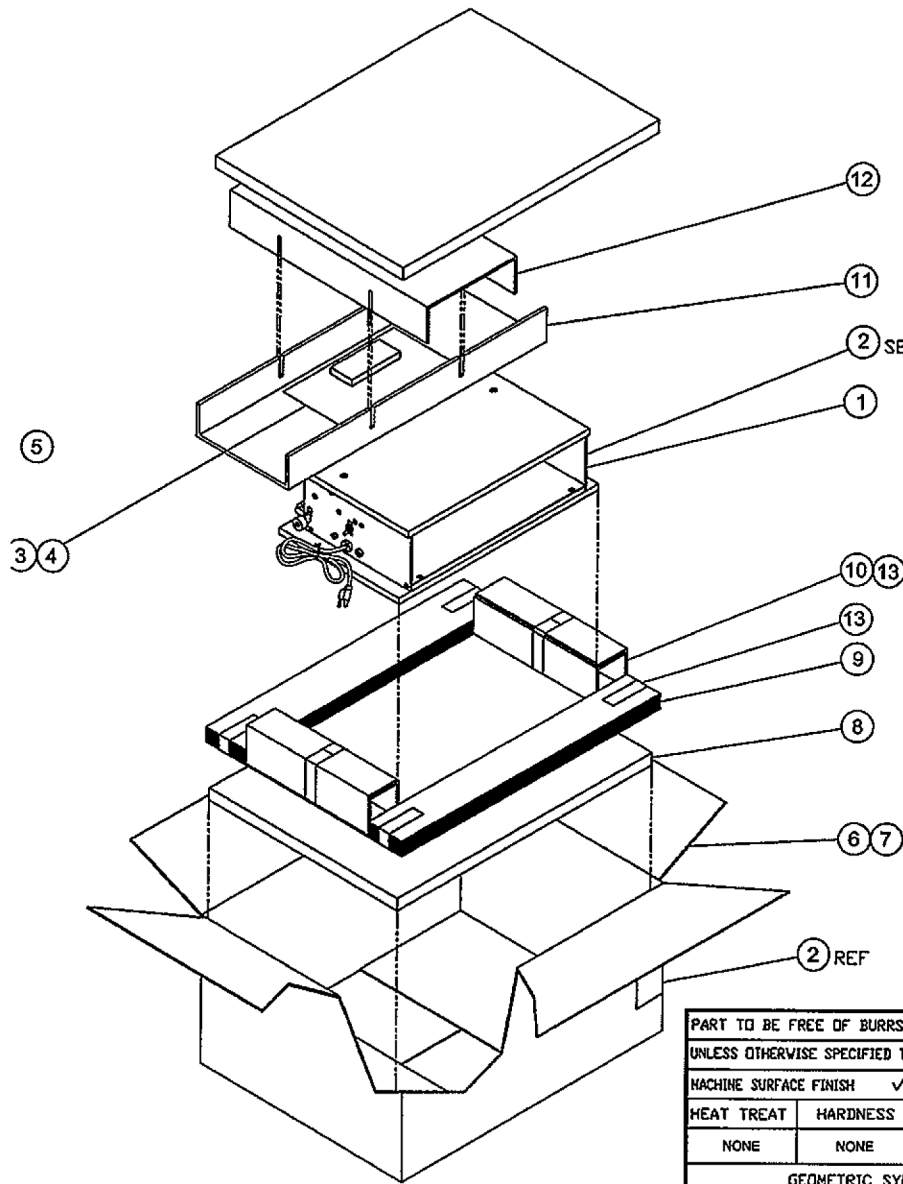
PART TO BE FREE OF BURRS, SHARP EDGES AND SHARP CORNERS		ALL DIMENSIONS AFTER PLATING		ALL THREADS MUST	
UNLESS OTHERWISE SPECIFIED THE FOLLOWING SPECIFICATIONS APPLY		MATERIAL		DR BY	
MACHINE SURFACE FINISH		✓ TOLERANCES: FRACTIONS ± 1/64		GMG 012800	
HEAT TREAT		DECIMALS ± .005 +.000		DES BY	
HARDNESS		.01 ±.XX		C/PD BY	
		FINISH			

Title: n:\new Equipment\7405001\7405001B1.002



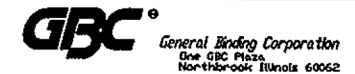
Title: n:\new Equipment\7405001\7405001B1.003

LETTER	E.C.N.	CHANGE	DATE	DR BY	CK'D BY
G1	E09989	REDRAWN UPON RELEASED BY GBC	01/26/00	GMG	
H1	E10469	7300551 WAS 7300450	09/05/01	OP	

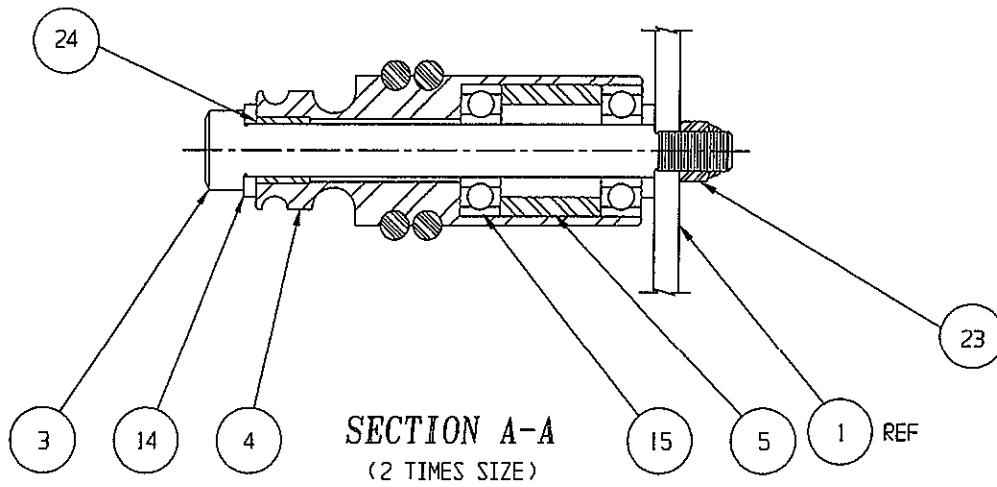


13	1963141	TAPE 2" X 3000' ROLL	A/R
12	0970005500	CI12 SCD/SLTD SHEET 24.07 X 14	1
11	0970005000	CI12 SCD/SLTD SHHET 18.14 X 14	1
10	0970006000	CI12 SCOREDV SHEET 11.10 X 13.12	2
9	0970004500	CI12 SPLITCORE SHEET 24.06 X 46	1
8	0970006100	CI12 FOAM PAD 24 1/4 X 18 3/4 X 1	2
7	1929306	STAPLES	A/R
6	0970004000	CI12 OUTER BOX 24.06 X 18.14 X 11	1
5	7300551	COLOR COIL CUT/CRIMP	1
4	1155022	WARRANTY REGISTRATION	1
3	6000120	OPERATING INSTRUCTION, CI12-2 115V	1
2	1155000	MASTER LISTING NAMEPLATE	1
1	7405001	FINAL ASSY., CI12-2 115V, W/O KNIFE	1
ITEM	PART No.	DESCRIPTION	QTY.

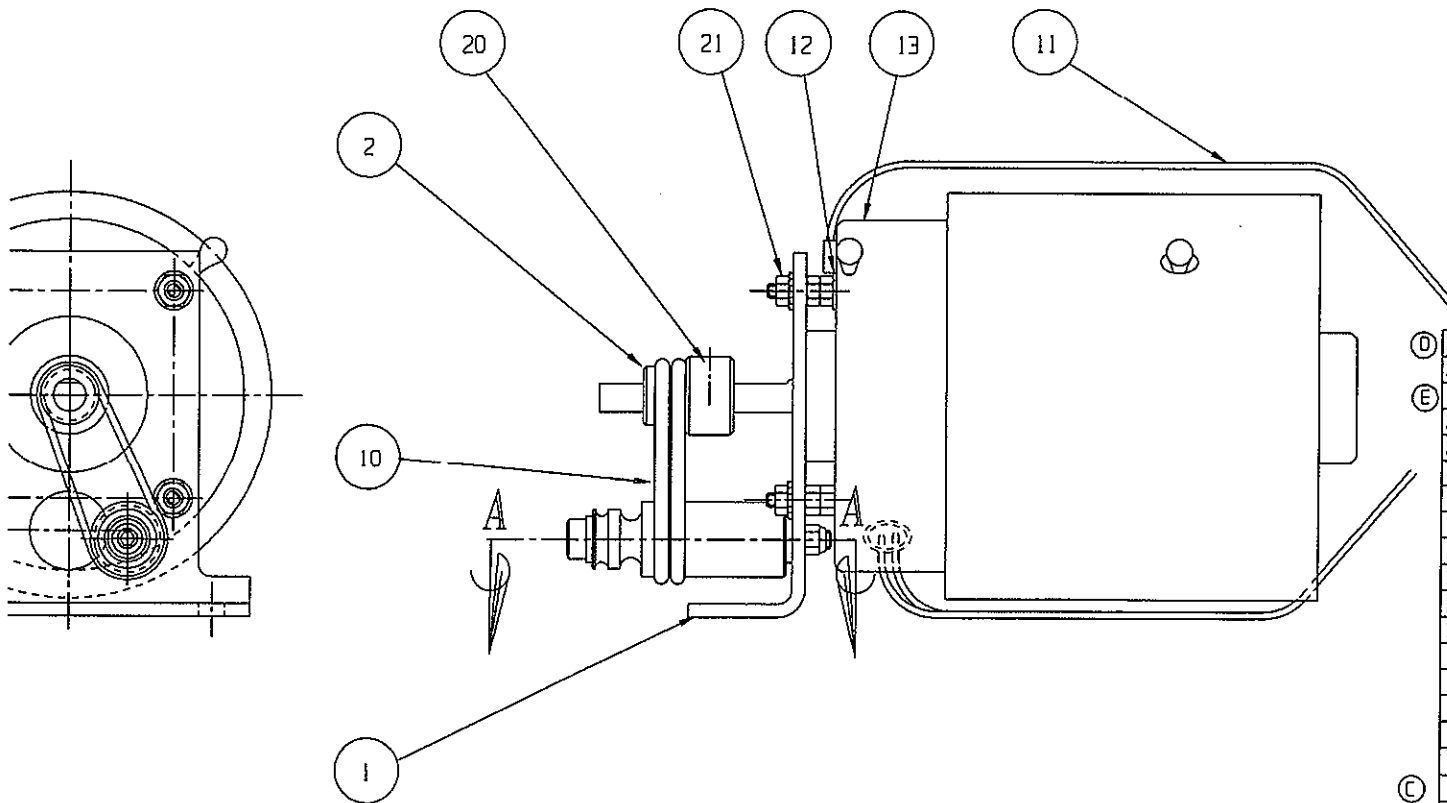
PART TO BE FREE OF BURRS, SHARP EDGES AND SHARP CORNERS		ALL DIMENSIONS AFTER PLATING		ALL THREADS MUST BE UNIFIED FORM CLASS 2 DO NOT SCALE PRINT	
UNLESS OTHERWISE SPECIFIED THE FOLLOWING SPECIFICATIONS APPLY:		MATERIAL	DR BY	GMG	12/13/99
MACHINE SURFACE FINISH	✓ TOLERANCES: FRACTIONS: ± 1/64	NONE	DES BY		
HEAT TREAT	HARDNESS	DECIMALS: ± .005 =,XXX	CK'D BY	m.v.	9/7/01
NONE	NONE	± .01 =,XX	APPD BY	m.v.	9/7/01
ANGULAR: ± 0° 30'		FINISH			
DRAFT ANGLES		NONE			
GEOMETRIC SYMBOLS		THIS PRINT IS THE PROPERTY OF AND WAS ORIGINATED BY GENERAL BINDING CORP. AND IS FURNISHED FOR ENGINEERING INFORMATION AND REFERENCE ONLY. GBC RESERVES ALL PATENT, PROPRIETARY, DESIGN, USE, SALE, MANUFACTURING AND REPRODUCTION RIGHTS THERE TO.		SIZE: B	
⊙ CONCENTRICITY	// PARALLELISM			PKG. ASSY., CI12-2	
⊕ TRUE POSITION	∠ ANGULARITY			115V, W/O KNIFE	
↗ RUNOUT	▭ FLATNESS			SCALE ~ 0330000000	
⊥ PERPENDICULARITY				SHT. 1 OF 1	



REV	ECD#	REVISION	BY	DATE
F1	E10410	OBSELETE DRAWING	PK	06/19/01



OLD STYLE MOTOR
OBSELETE DRAWING
SUPERSEDED BY DWG #7405207

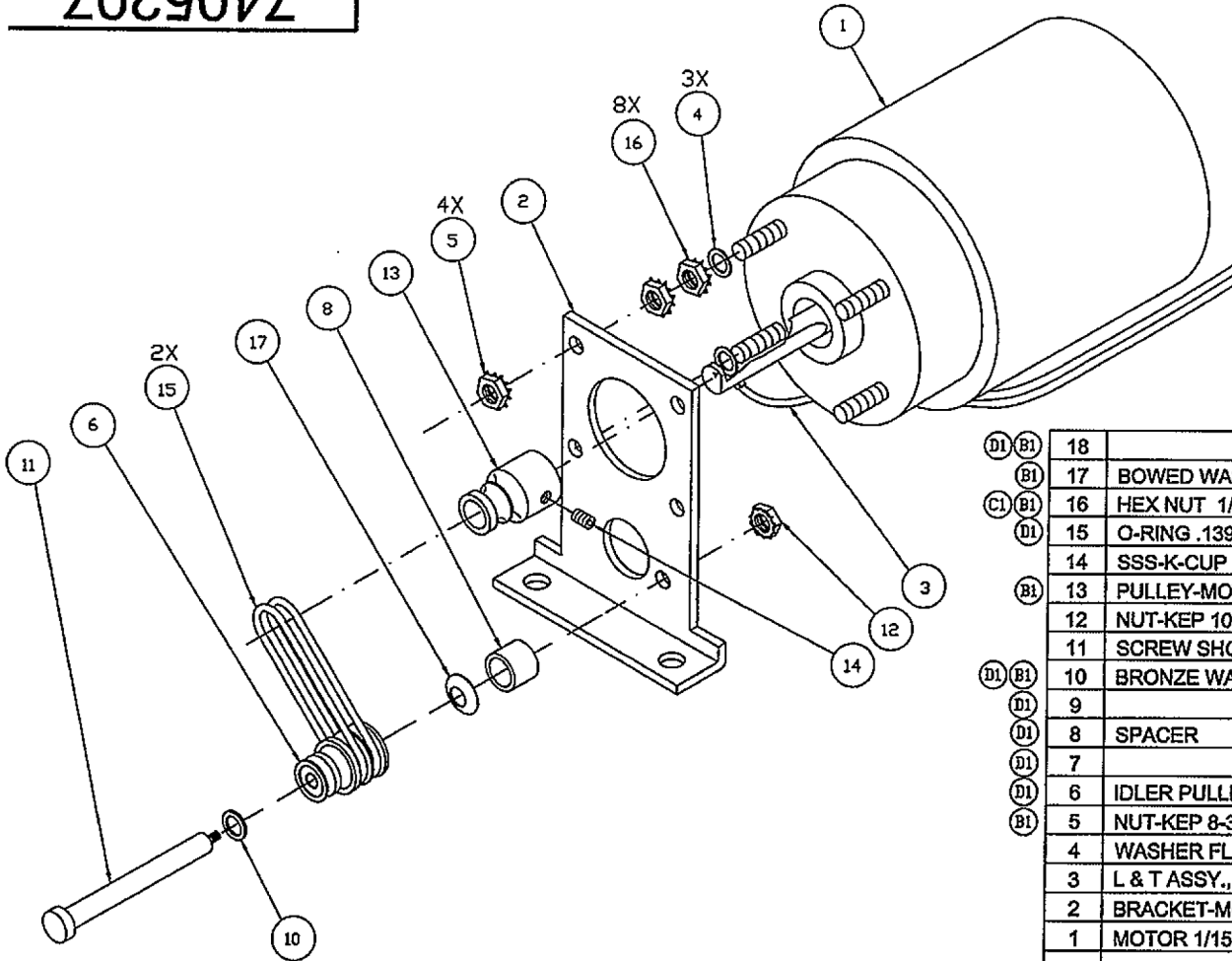


D	24	0485021800 BUSHING	1	1/4 I.D. #P25-2
	23	0750302000 KEP LOCK NUT	1	#10-24
E	21	0750301100 KEP NUT	12	#8-32 THREAD
	20	0751014000 SET SCREW	1	#8-32 X 1/4 LG.
STANDARD COMPONENTS				
	15	0485086700 BALL BEARING	2	GENERAL #R4-88
	14	0750194200 THRUST WASHER	2	DILITE #TT-400
	13	0220007500 MOTOR 1/15 HP	1	1580 RPM - FASCO #D234
	12	0220172000 STA-KON TERMINAL	2	T & B #B14-10
	11	0220114500 WIRE	1	GREEN 16 GA. AVG X 18"
	10	0750100400 O-RING	2	PYRAMID #.139 X 4 3/8 B3A
PURCHASED COMPONENTS				
	5	0321009000 SPACER	1	B SIZE DRAWING
	4	0321009200 PULLEY-JACKSHAFT	1	B SIZE DRAWING
	3	0750232500 SHOULDER SCREW	1	1/4 DIA. X 2" LG.
	2	0321009100 PULLEY-MOTOR	1	A SIZE DRAWING
C	1	0322000300 BRACKET-MOTOR	1	B SIZE DRAWING
REV	MATERIAL		QTY	SIZE

Title: n:\NEW EQUIPMENT\0322020000\0322020000F1.001

7405207

NEW STYLE MOTOR

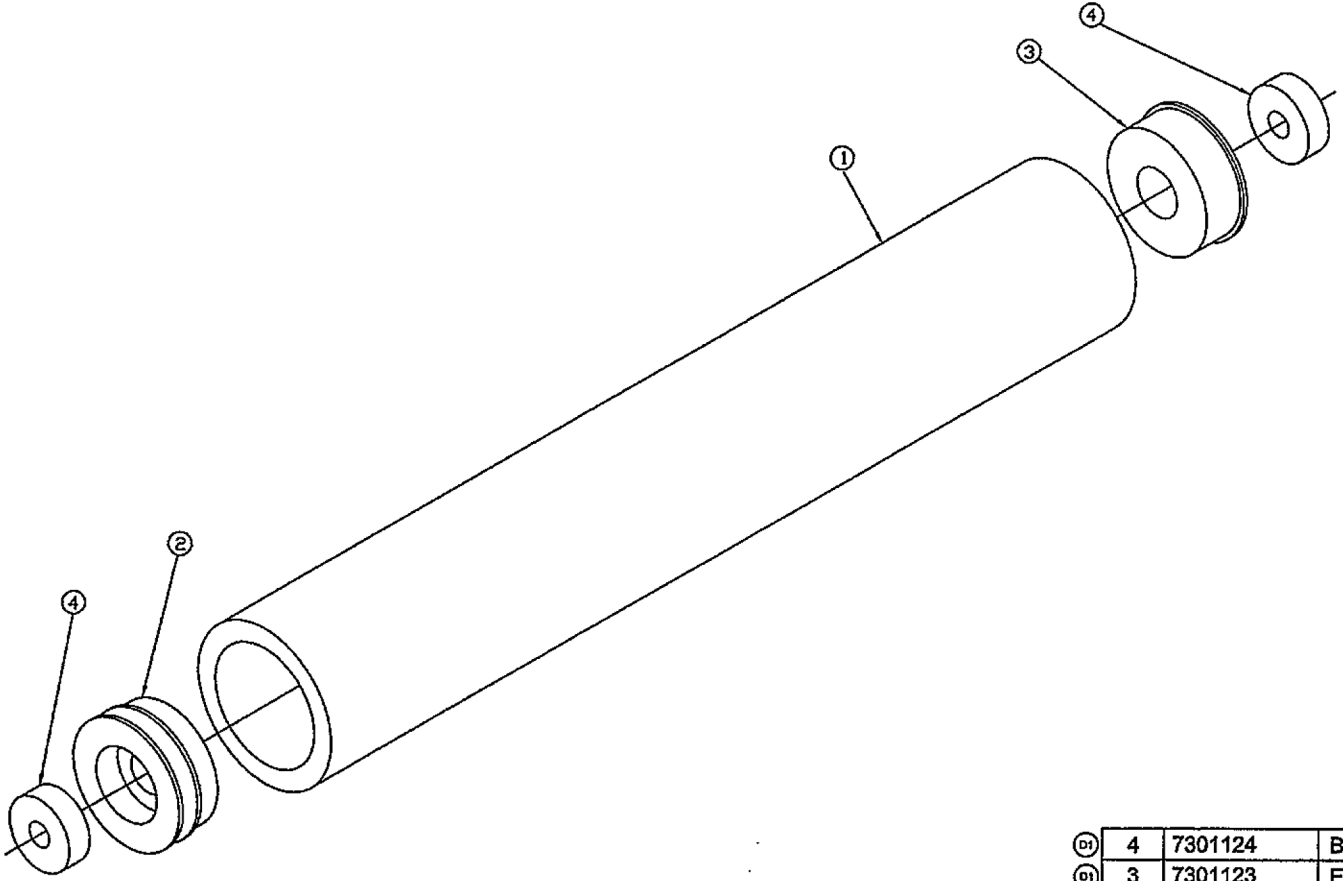


REVISIONS

LETTER	E.C.N.	CHANGE	DATE	DR BY	CHK BY
A1	E09989	REDRAWN UPON RELEASED BY GBC	01/27/00	GMG	
B1	E10063	ADDED ITEM - 16, 17, 18	4/27/00	MA	
C1	E10410	1926602 WAS 0750304500	06/19/01	PK	
D1	E10595	P/N 7301172 WAS 0750100400 P/N 1953509 WAS 0750194200 P/N 1924840 WAS 0321009000 P/N 7301135 WAS 0321009200 DELETE ITEMS 7, 9 AND 18	04/08/02	PK	

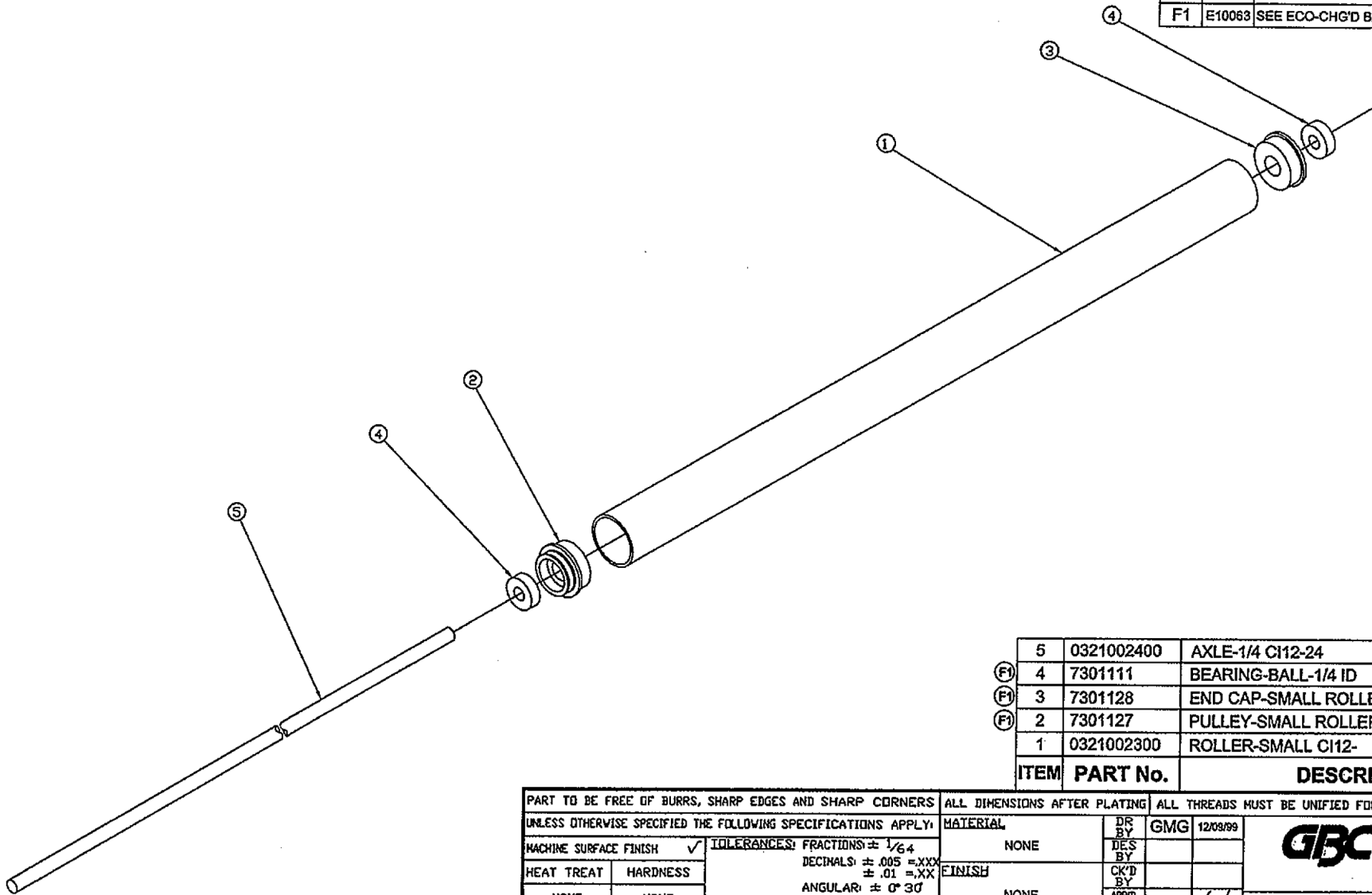
(D1) (B1)	18				
(B1)	17	BOWED WASHER	1	1926312	
(C1) (B1)	16	HEX NUT 1/4 - 20	8	1926602	
(D1)	15	O-RING .139 X 4 7/8	2	7301172	
	14	SSS-K-CUP PT. 8-32 X 1/4	1	1900002	
(B1)	13	PULLEY-MOTOR	1		7301109 0321009900
	12	NUT-KEP 10-24	1	1926806	
	11	SCREW SHOULDER 1/4 X 2	1	0750232500	
(D1) (B1)	10	BRONZE WASHER TT-400	1	1953509	
(D1)	9				
(D1)	8	SPACER	1	1924840	
(D1)	7				
(D1)	6	IDLER PULLEY ASSY	1	7301135	
(B1)	5	NUT-KEP 8-32	4	1926802	
	4	WASHER FLAT SAE #8	3	1925004	
	3	L & T ASSY., GROUND 18GA., 15"	1	7405203	
	2	BRACKET-MOTOR	1	0322000300	
	1	MOTOR 1/15HP 1580 RP	1		7301107 0220007700
ITEM	DESCRIPTION	QTY.	COMMON	0322020000 115V	0325020000 220V
				PART No.	

C1	E09989	REDRAWN UPON RELEASE BY GBC	02/02/00	GMG
D1	E10063	SEE ECO-CHG'D B/M P/N's	4/27/00	MA



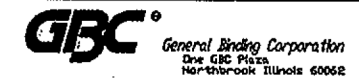
④	4	7301124	BEARING-BALL-3/8 ID	2	D6
③	3	7301123	END CAP C12-26	1	D5
②	2	7301122	PULLEY-LARGE ROLLER	1	B1
①	1	0480072700	ROLLER-LARGE C12-28	1	C3
ITEM	PART No.	DESCRIPTION		QTY.	ZONE

DATE	BY	CONTROL	DATE	BY	BY
E1	E09989	REDRAWN UPON RELEASE BY GBC	02/02/00	GMG	
F1	E10063	SEE ECO-CHG'D B/M P/N's	4/27/00	MA	



5	0321002400	AXLE-1/4 CH2-24	1	
(F1)	4	7301111	BEARING-BALL-1/4 ID	2
(F1)	3	7301128	END CAP-SMALL ROLLER	1
(F1)	2	7301127	PULLEY-SMALL ROLLER	1
1	0321002300	ROLLER-SMALL CH2-	1	
ITEM	PART No.	DESCRIPTION	QTY.	

PART TO BE FREE OF BURRS, SHARP EDGES AND SHARP CORNERS		ALL DIMENSIONS AFTER PLATING		ALL THREADS MUST BE UNIFIED FORM CLASS 2 DO NOT SCALE PRINT	
UNLESS OTHERWISE SPECIFIED THE FOLLOWING SPECIFICATIONS APPLY:					
MACHINE SURFACE FINISH	✓	TOLERANCES: FRACTIONS: ± 1/64	MATERIAL	DR BY	GMG 12/09/99
HEAT TREAT	NONE	DECIMALS: ± .005 =.XXX	NONE	DES BY	
HARDNESS	NONE	± .01 =.XX	FINISH	CK'D BY	
		ANGULAR: ± 0° 30'	NONE	APP'D BY	JF 4/28/00
		DRAFT ANGLES		BY	
GEOMETRIC SYMBOLS ○ CONCENTRICITY // PARALLELISM ⊕ TRUE POSITION < ANGULARITY ↗ RUNOUT □ FLATNESS ⊥ PERPENDICULARITY			THIS PRINT IS THE PROPERTY OF AND WAS ORIGINATED BY GENERAL BINDING CORP. AND IS FURNISHED FOR ENGINEERING INFORMATION AND REFERENCE ONLY. GBC RESERVES ALL PATENT, PROPRIETARY, DESIGN, USE, SALE, MANUFACTURING AND REPRODUCTION RIGHTS THEREOF.		
				SIZE:	B
				SCALE	~ 0321004300 SHT. 1 OF 1



ROLLER ASSY.,
SMALL

PART NO.	DESCRIPTION
0480004200	DECAL-ON/OFF
0480002900	DECAL-CAUTION
0480097400	SHIELD-UPPER
0480037000	SHELF-TOP
0480097300	GUARD-FRONT

UNIQUE PARTS FOR MODEL **CI-12-2. ALL OTHER PARTS ARE THE SAME AS THE CI-12.