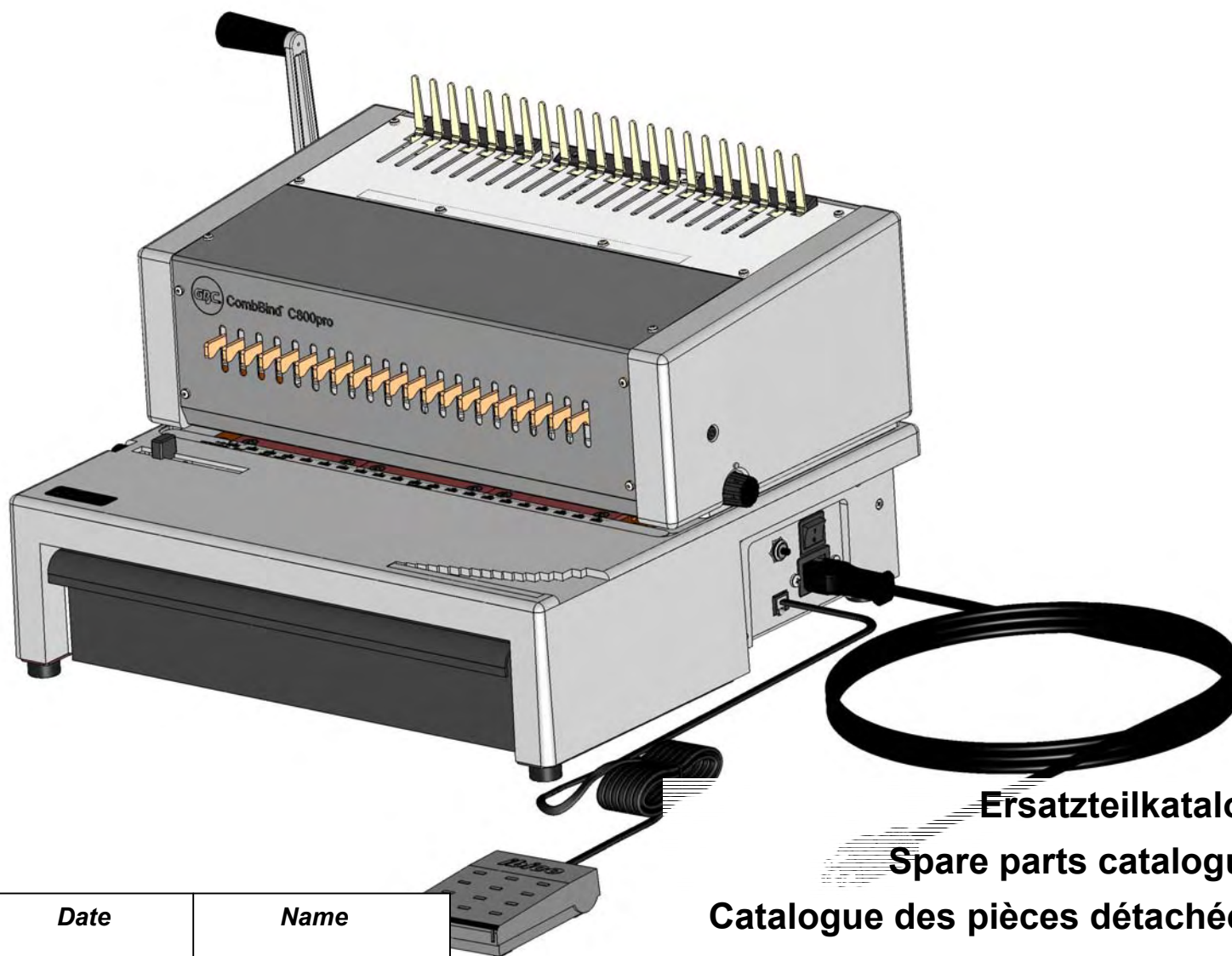


CombBind C800Pro USA

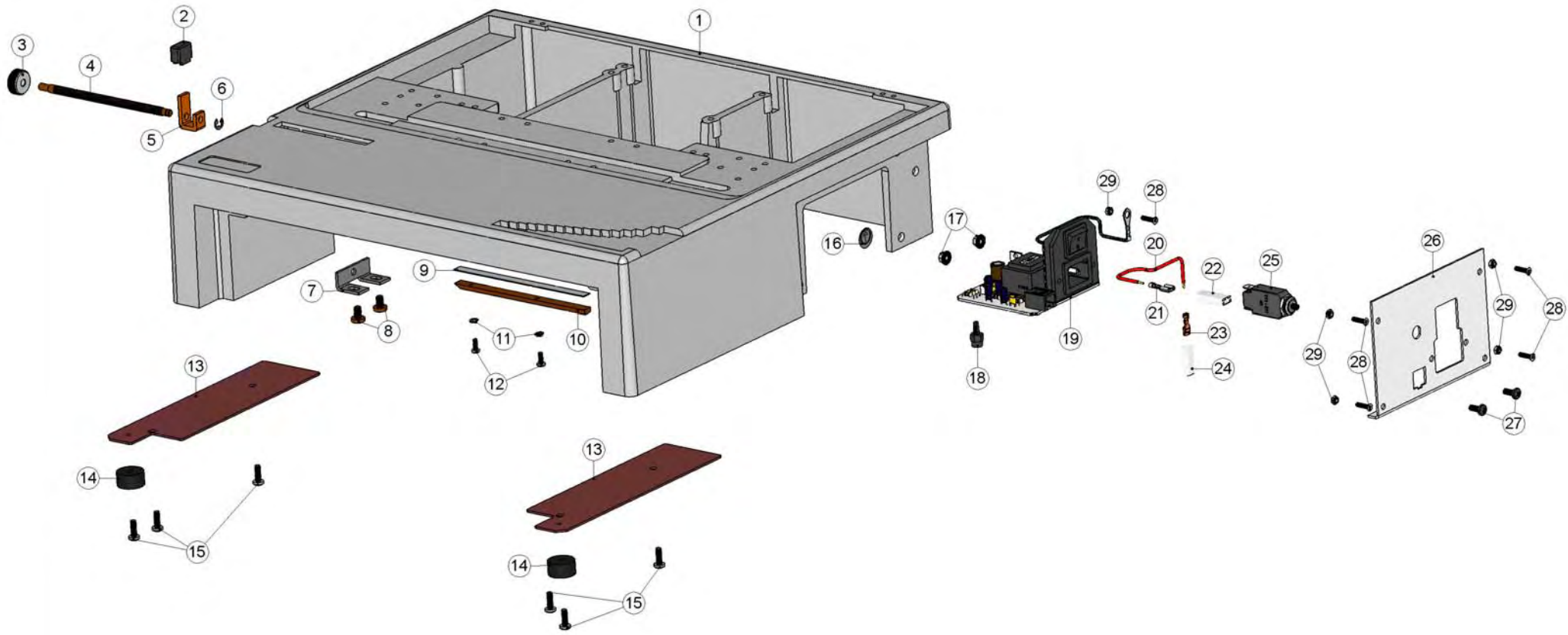


Ersatzteilkatalog
Spare parts catalogue
Catalogue des pièces détachées
Catálogo de peças

<i>Edition</i>	<i>Serial No.</i>	<i>Date</i>	<i>Name</i>
1	RDP0001-	April 2005	GBC Portuguesa

	<i>Version</i>	<i>Product N</i>
	CombBind C800Pro USA	27170

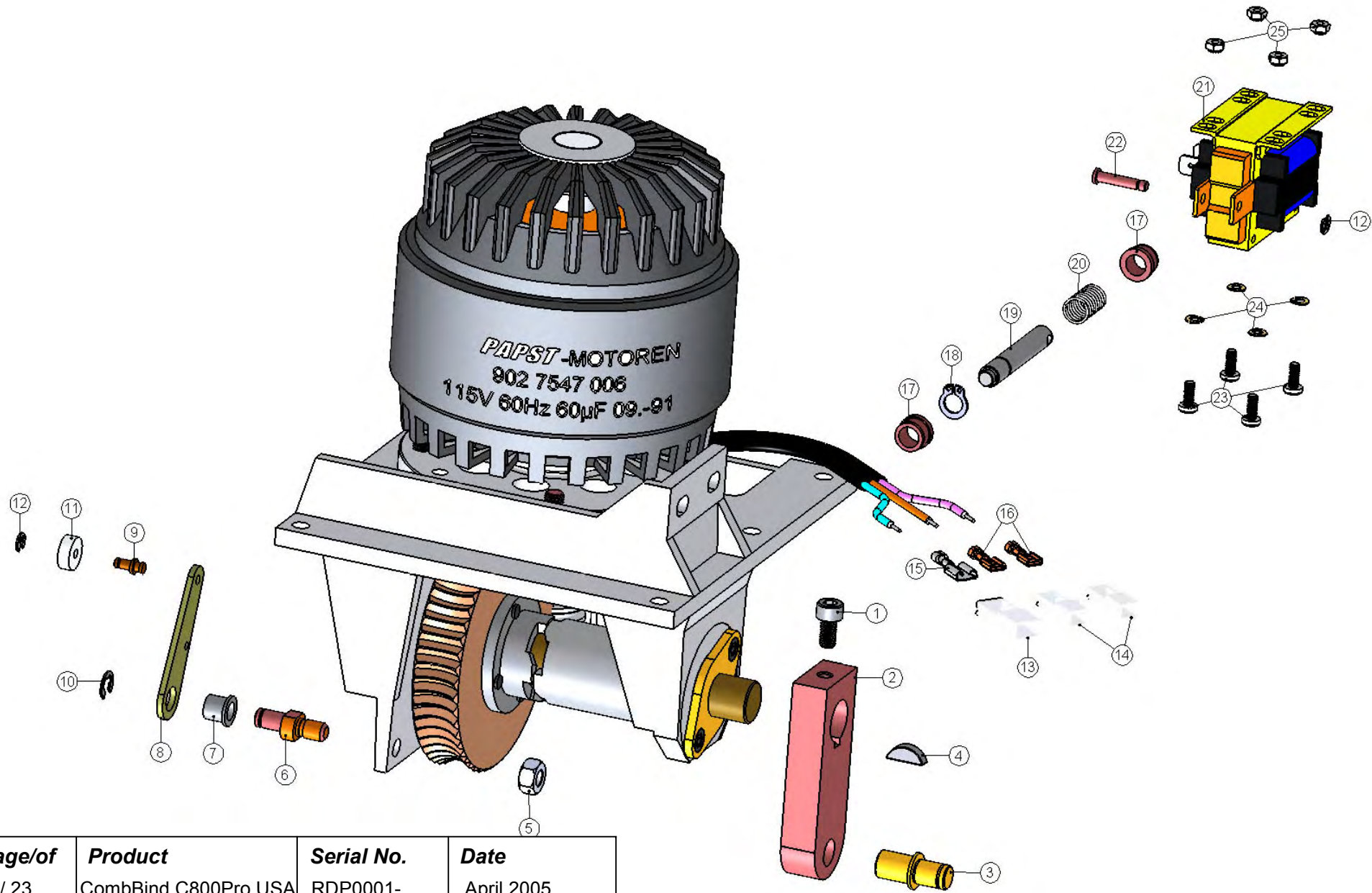
Product CombBind C800Pro USA	Serial No. RDP0001-	Date April 2005	Page 3
---------------------------------	------------------------	--------------------	-----------



7	2-3308	----	----	----	Spindle holder
8	9-9054	----	DIN 7500 C / M5x8	----	Self drilling torx screw
9	2-3398	----	----	----	Plastic binders scale inches
10	2-3303	----	----	----	Strip
11	9-9417	----	DIN 127 B / M3	----	Spring lock washer
12	9-9030	----	DIN 7500 C / M3x8	----	Duo-Taptite-scr.w.ch. h.
13	2-2298	----	----	----	Drawer guide
14	2-2271	----	----	----	Rubber foot (EPK)
15	9-9059	----	DIN 7500 C / M4x12	----	Self drilling torx screw
16	2-2678	----	----	----	Grounded sign
17	9-9217	----	BN 2798 / M4	----	Hexagon stop tooth nut
18	2-2742	----	M4, L=9	----	Distance clip
19	2-2738	----	----	----	Electronic circuit EPK21(115V)
20	2-4007	----	----	----	Stranded wire
21	2-2888	----	----	----	Receptacle
22	2-2760	----	----	----	Receptacle housing 6,3 UL
23	2-6050	----	----	----	Receptacle, flat
24	2-2762	----	----	----	Receptacle housing 4,8 UL
25	2-2287	----	----	----	Savety switch 115V (4A)
26	2-2322	----	----	----	Platine
27	9-9027	----	DIN 7985 A / M4x10	----	Cross rec.raised ch.h.s.
28	9-9084	----	DIN 965 A / M3x12	----	Cross rec.count.h. screw
29	9-9207	----	BN 201 / M3 H=0,9	----	Nut

Product CombBind C800Pro	Serial No. RDP0001-	Date April 2005	Page 5
-----------------------------	------------------------	--------------------	-----------

Product CombBind C800Pro USA	Serial No. RDP0001-	Date April 2005	Page 7
---------------------------------	------------------------	--------------------	-----------

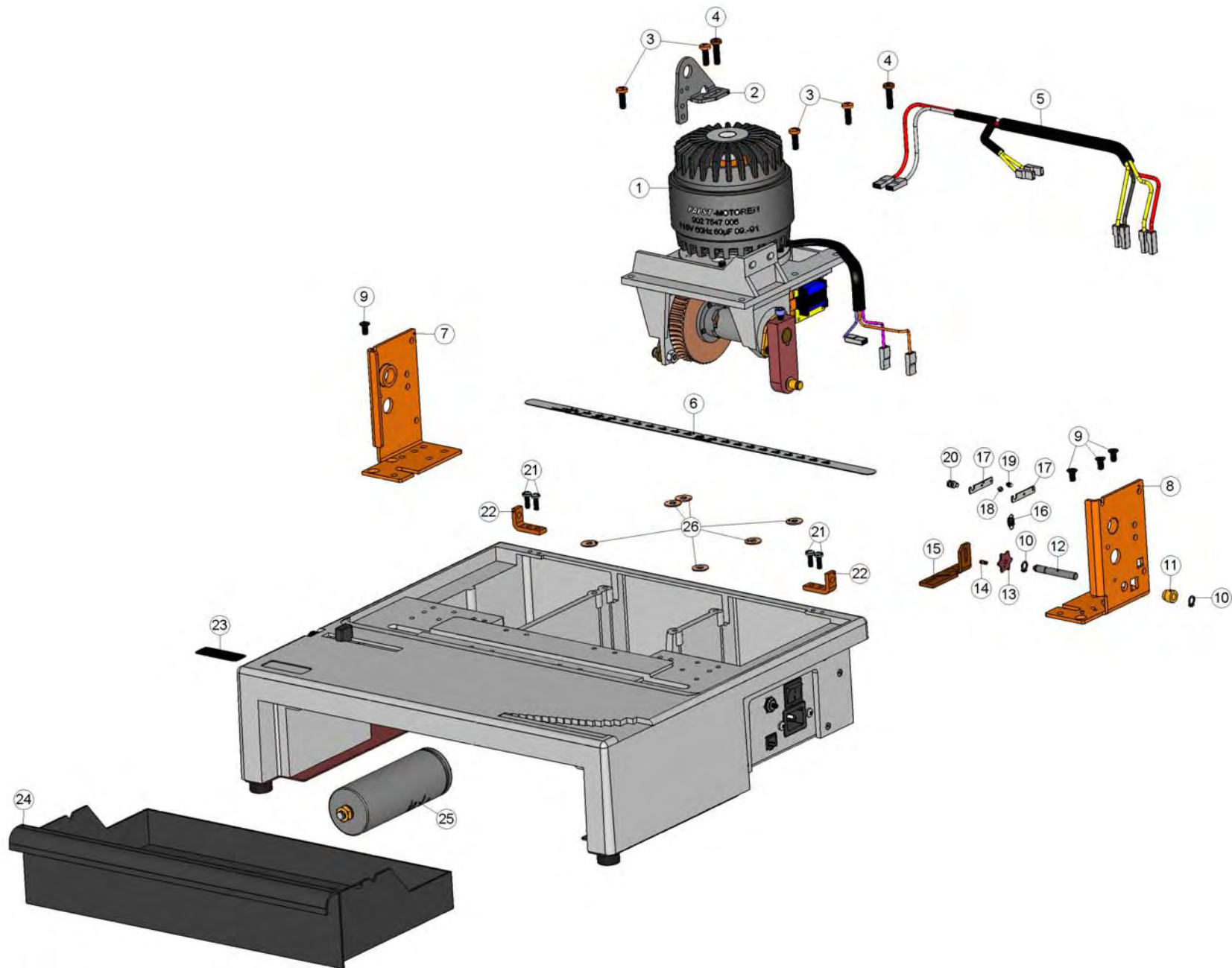


Page/of	Product	Serial No.	Date
8 / 23	CombBind C800Pro USA	RDP0001-	April 2005

Pos.	New Part No.	Old Part No.	Notes	Pre-Assemble Set	Description
1	9-9002	----	DIN 912 8.8 / M5x10	----	Hex. socket h. cap screw
2	2-2208	----	----	1-1207.29	Rocker
3	2-2209	----	----	1-1207.29	Bolt
4	9-9623	----	DIN 6888 / 4x5x13	----	Woodruff key
5	9-9206	----	DIN 934 / M6	----	Hexagon thin nut 0,8D
6	2-2233	----	----	----	Eccentric bolt
7	2-2230	----	----	1-1228.29	Splineway
8	2-2229	----	----	1-1228.29	Stop arm
9	2-2231	----	----	1-1228.29	Axle
10	9-9510	----	DIN 6799	----	Retaining washer, loose 5
11	2-2232	----	----	----	Roll
12	9-9507	----	DIN 6799	----	Retaining washer, loose 2,3
13	2-2760	----	----	----	Receptacle housing 6,3 UL
14	2-2762	----	----	----	Receptacle housing 4,8 UL
15	2-2888	----	----	----	Receptacle
16	2-6050	----	----	----	Receptacle, flat
17	2-2256	----	----	----	Guide for bolt
18	9-9501	----	DIN 471 A7	----	Retaining ring
19	2-2221	----	----	----	Clutch bolt
20	2-2243	----	----	----	Pressure spring
21	2-2276	----	----	----	Lifting magnet 115V (60Hz)
22	2-2284	----	----	----	Bolt 115 / 220 V

23	9-9030	----	DIN 7500 C / M3x8	----	Duo-Taptite-scr.w.ch. h.
24	9-9408	----	DIN 137 A / M3	----	Curved spring washer
25	9-9207	----	BN 201 / M3 H=0,9	----	Nut

Product CombBind C800Pro USA	Serial No. RDP0001-	Date April 2005	Page 9
---------------------------------	------------------------	--------------------	-----------

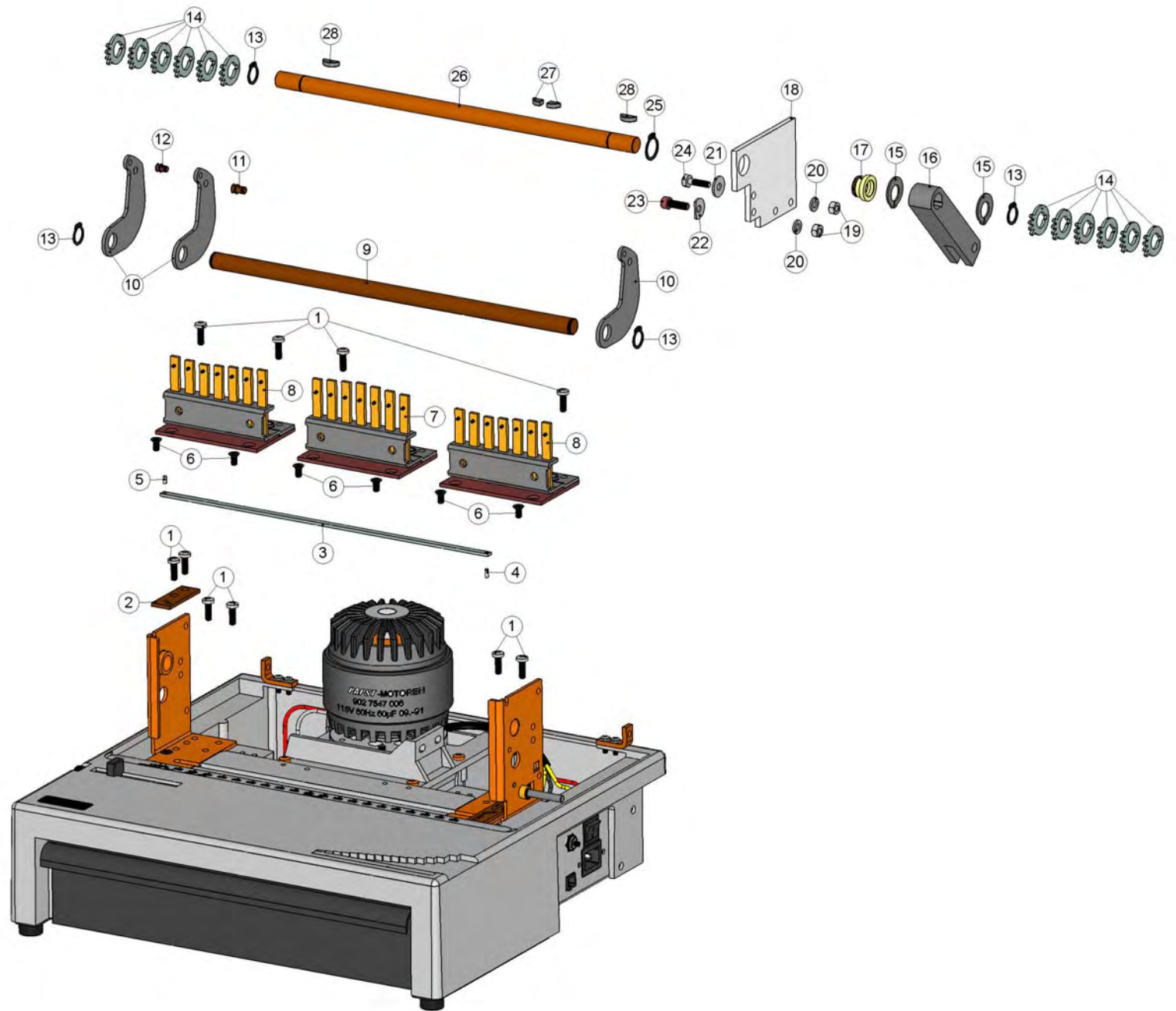


<i>Pos.</i>	<i>New Part No.</i>	<i>Old Part No.</i>	<i>Notes</i>	<i>Pre-Assemble Set</i>	<i>Description</i>
1	1-1284.90	----	----	----	Gear cpl., 115V
2	2-2255	----	----	----	Bracket
3	9-9123	----	DIN 7500 C / M5x16	----	Self drilling torx screw
4	9-9190	----	DIN 7500 C / M5x20	----	Self drilling torx screw
5	1-2297	----	----	----	Stranded cable cpl.
6	2-2631	----	----	----	Scale, EPK 21 USA
7	2-2092	----	----	----	Bearing bracket left (EPK)
8	2-2093	----	----	----	Bearing bracket right (EPK)
9	9-9007	----	DIN 7500 M / M5x10	----	Torx head screw
10	9-9500	----	DIN 471 A6	----	Retaining ring
11	2-2145	----	----	----	Bearing
12	2-2147	----	----	1-1149.29	Stop axle (EP/EPK)
13	2-2148	----	----	1-1149.29	Stop wheel
14	2-2150	----	----	1-1149.29	Carrier bolt
15	2-2151	----	----	----	Paper stop slide
16	2-2155	----	----	----	Tension spring
17	2-2142	----	----	1-1141.90	Stop lever
18	2-2143	----	----	1-1141.90	Roll
19	2-2144	----	----	1-1141.90	Rivet roll
20	2-2123	----	----	----	Bolt
21				----	Self drilling torx screw
22				----	Bracket

Page/of	Product	Serial No.	Date
10 / 23	CombBind C800Pro USA	RDP0001-	April 2005

23	2-2062	----	----	----	Logotype CombBind C800pro
24	2-2238	----	----	----	Drawer (EP/EPK)
25	2-2684	----	----	----	Capacitor 115V, 60 YF
26	2-2254	----	----	----	Rubber plate

Product CombBind C800Pro USA	Serial No. RDP0001-	Date April 2005	Page 11
---------------------------------	------------------------	--------------------	------------

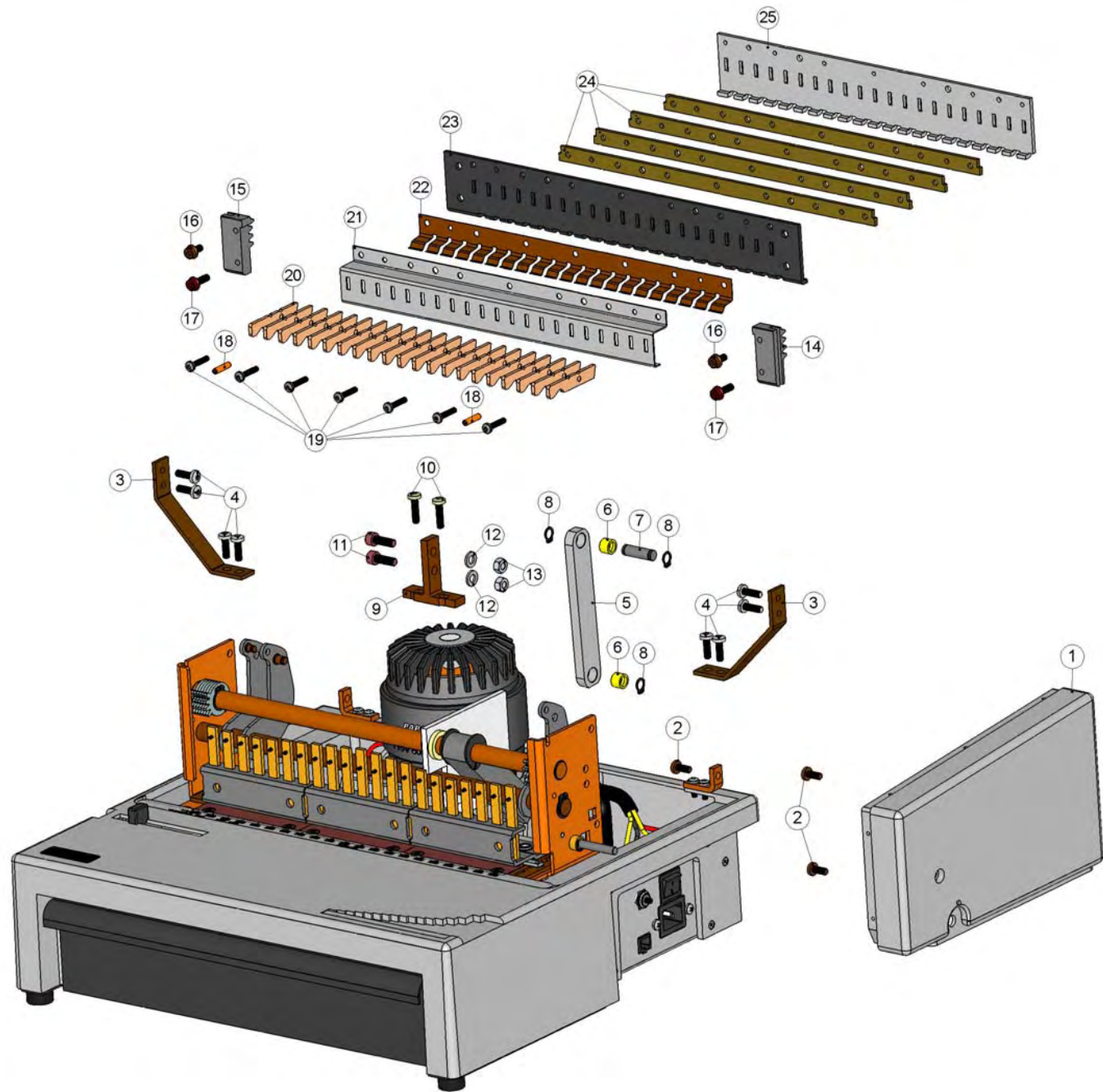


<i>Pos.</i>	<i>New Part No.</i>	<i>Old Part No.</i>	<i>Notes</i>	<i>Pre-Assemble Set</i>	<i>Description</i>
1	9-9123	----	DIN 7500 C / M5x16	----	Self drilling torx screw
2	2-2152	----	----	----	Paper stop guide
3	2-2153	----	----	1-1163.90	Paper stop rail 21
4	9-9605	----	DIN 6325 / 3x8	1-1163.90	Parallel pin
5	9-9604	----	DIN 1472 / 3x6	----	Parallel pin
6	9-9007	----	DIN 7500 M / M5x10	----	Torx head screw
7	1-1036	----	----	----	Punching block cpl.,centre IB
8	1-1038	----	----	----	Punching block cpl.,left (EPK)
9	2-2604	----	----	1-1614.29	Axle
10	2-2618	----	----	1-1614.29	Arm
11	2-2621	----	----	1-1614.29	Carrier bolt
12	2-3727	----	----	1-1614.29	Carrier bolt (E-Kombo)
13	9-9504	----	DIN 471 / A14	----	Retaining ring
14	2-2166	----	----	----	Tooth segment
15	9-9515	----	BN 832 / G14	----	Grip-ring SP 220
16	2-2213	----	----	----	Lever
17	2-2227	----	----	----	Bearing bush
18	2-2224	----	----	----	Bearing plate
19	9-9206	----	DIN 934 / M6	----	Hexagon thin nut 0,8D
20	9-9412	----	DIN 127/ M6	----	Spring lock washer
21				----	Washer
22				----	Washer spec.

Page/of	Product	Serial No.	Date
12 / 23	CombBind C800Pro USA	RDP0001-	April 2005

23	9-9012	----	DIN 912 12.9 / M6x18	----	Hex. socket h. cap screw
24	9-9066	----	DIN 933 / M6x20	----	Hexagon screw
25	9-9505	----	DIN 471 / A18	----	Retaining ring
26	2-2223	----	----	----	Axle (EP/EPK)
27	2-2291	----	----	----	Wedge
28	9-9624	----	DIN 6888 / 4x6.5x16	----	Woodruff key

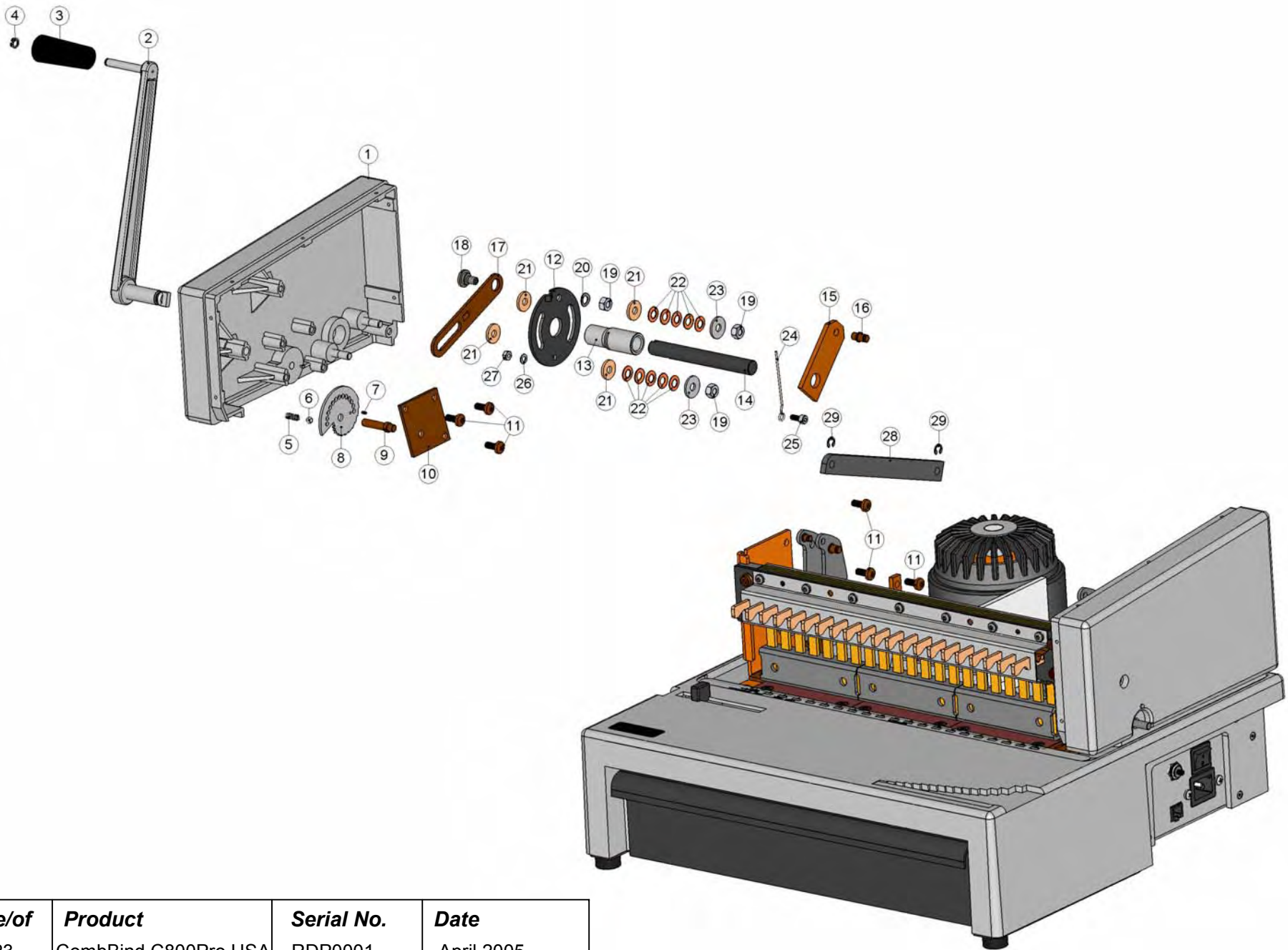
Product CombBind C800Pro USA	Serial No. RDP0001-	Date April 2005	Page 13
---------------------------------	------------------------	--------------------	------------



Pos.	New Part No.	Old Part No.	Notes	Pre-Assemble Set	Description
1	2-2606.43	----	----	----	Cover right
2	9-9046	----	DIN 7500 C / M5x12	----	Self drilling torx screw
3	2-2154	----	----	----	Support
4	9-9123	----	DIN 7500 C / M5x16	----	Self drilling torx screw
5	2-2211	---	----	1-1210.90	Joint arm
6	2-2212	----	----	1-1210.90	Bearing bush
7	2-2234	----	----	----	Axle
8	9-9502	----	DIN 471 / A8	----	Retaining ring
9	2-2226	----	----	----	T-fastening (EP/EPK)
10	9-9190	----	DIN 7500 C / M5x20	----	Self drilling torx screw
11	9-9012	----	DIN 912 12.9 / M6x18	----	Hex. socket h. cap screw
12	9-9412	----	DIN 127/ M6	----	Spring lock washer
13	9-9206	----	DIN 934 / M6	----	Hexagon thin nut 0,8D
14	2-2654	----	----	----	Toothed rack right (EP/EPK)
15	2-2655	----	----	----	Toothed rack left (EP/EPK)
16	9-9063	----	BN 3873 / M5x10	----	Safety sc. w. Inbus-ripp
17	9-9064	----	BN 3873 / M5x16	----	Safety-sc. w. Inbus-ripp
18	9-9619	----	DIN 1481 / 4x18	----	Slotted spring pin, heavy
19	9-9065	----	DIN 7500 C / M4x20	----	Self drilling torx screw
20	2-2133	----	----	----	Slide
21	2-2130	----	----	----	Guide
Page/of	Product	Serial No.	Date	----	Spring
14 / 23	CombBind C800Pro USA	RDP0001-	April 2005		

23	2-2128	----	----	----	Bracket front (PB-21)
24	2-2131	----	----	----	Distance plate
25	2-2129	----	----	----	Bracket back (PB-21)

Product CombBind C800Pro USA	Serial No. RDP0001-	Date April 2005	Page 15
---------------------------------	------------------------	--------------------	------------

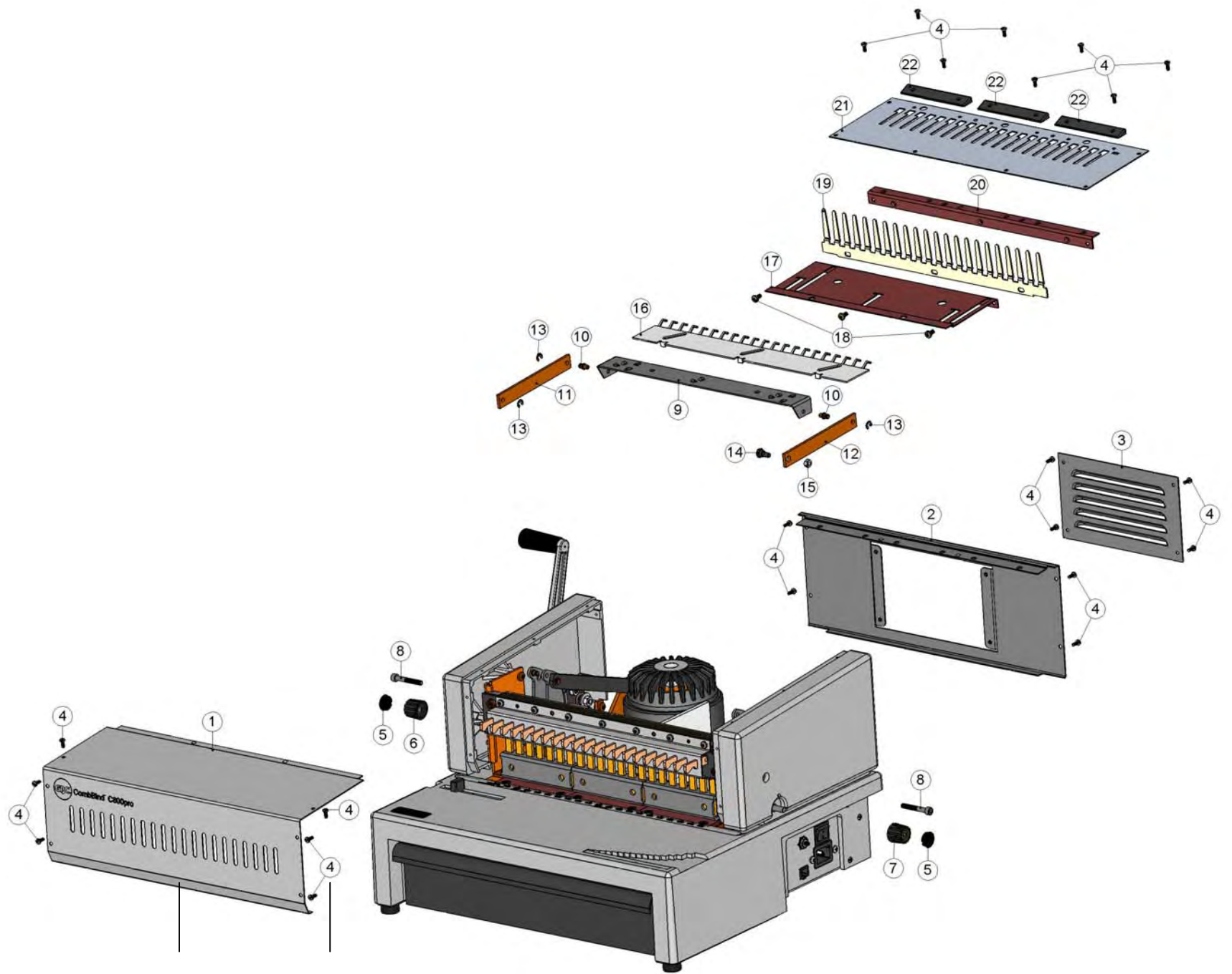


Page/of	Product	Serial No.	Date
16 / 23	CombBind C800Pro USA	RDP0001-	April 2005

Pos.	New Part No.	Old Part No.	Notes	Pre-Assemble Set	Description
1	2-2605.43	----	----	----	Cover, left
2	2-2611	----	----	----	Hand lever (EPK)
3	2-2643	----	----	----	Handle
4	9-9500	----	DIN 471 A6	----	Retaining ring
5	2-2610	----	----	----	Knob cover
6	9-9702	----	DIN 5401	----	Ball 5
7	9-9611	----	DIN 7343 / 2x4	----	Spiral pin
8	2-2645	----	----	1-1644.29	Stop wheel
9	2-2646	----	----	1-1644.29	Stop axle (EPK)
10	2-2642	----	----	----	Plate
11	9-9046	----	DIN 7500 C / M5x12	----	Self drilling torx screw
12	2-2634	----	----	1-1632.29	Disc
13	2-2635	----	----	1-1632.29	Splineway
14	2-2632	----	----	1-1632.29	Driving axle
15	2-2624	----	----	1-1632.29	Clip
16	2-2621	----	----	1-1632.29	Carrier bolt
17	2-2629	----	----	----	Stop lever
18	2-2630	----	----	----	Eccentric screw
19	9-9206	----	DIN 934 / M6	----	Hexagon thin nut 0,8D
20	9-9411	----	DIN 137 A / M6	----	Curved spring washer
21	2-2626	----	----	----	Washer
22	9-9405	----	DIN 2093 B/12.5x6.2x0.5	----	Disc spring, soft
23	9-9303	----	DIN 9021 A / M4	----	Washer
24	2-2651	----	----	----	Looped spring

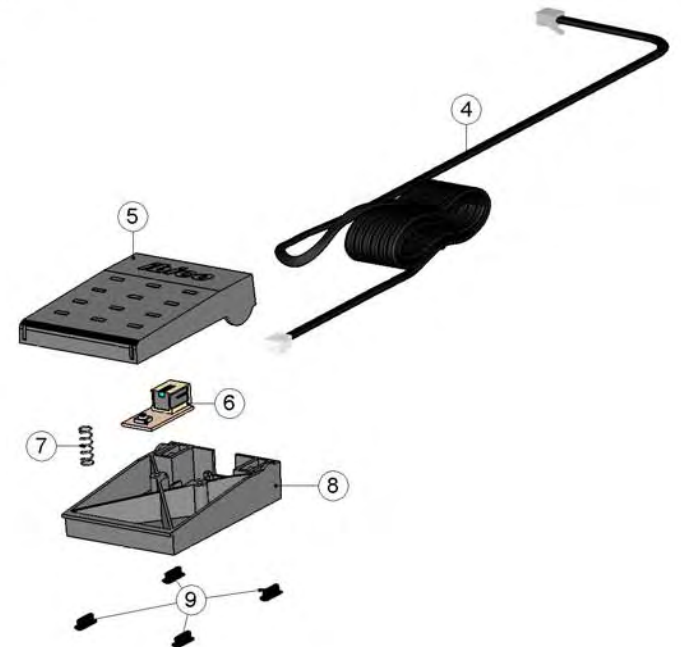
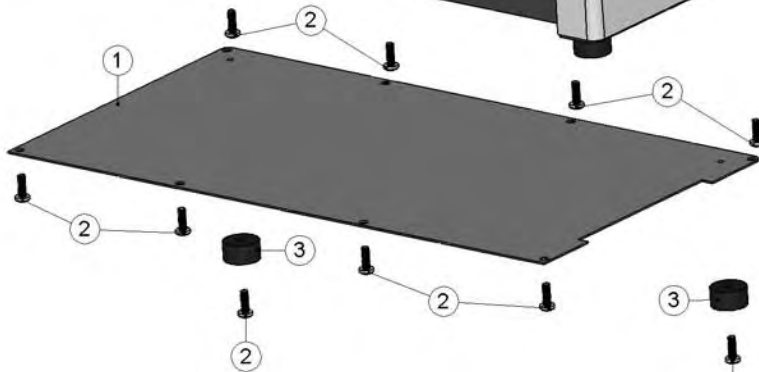
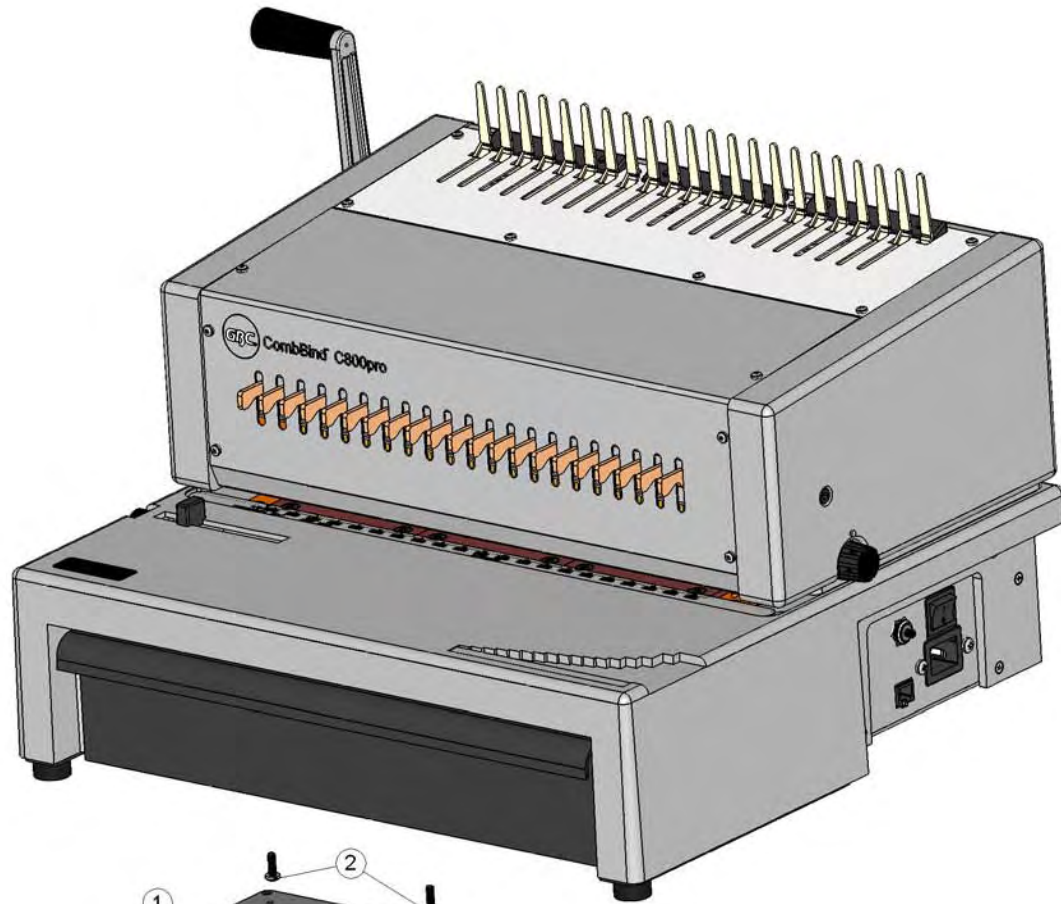
25	9-9000	----	DIN 912 8.8 / M4x10	----	Hex. socket h. cap screw
26	9-9301	----	DIN 433 / M4	----	Washer
27	9-9204	----	DIN 934 / M4	----	Hexagon thin nut 0,8 D
28	2-2627	----	----	----	Bar, bottom
29	9-9510	----	DIN 6799	----	Retaining washer, loose 5

Product CombBind C800Pro USA	Serial No. RDP0001-	Date April 2005	Page 17
---------------------------------	------------------------	--------------------	------------



<i>Pos.</i>	<i>New Part No.</i>	<i>Old Part No.</i>	<i>Notes</i>	<i>Pre-Assemble Set</i>	<i>Description</i>
1	2-2667.70	----	----	----	Front cover CombBind C800pro
2	2-2648.44	----	----	----	Back cover
3	2-2239.44	----	----	----	Cover for hood (EP/EPK)
4	9-9030	----	DIN 7500 C / M3x8	----	Duo-Taptite-scr.w.ch. h.
5	2-2261	----	----	----	Knob cover
6	2-2345	----	----	----	Control knob
7	2-2260	----	----	----	Knob
8	9-9006	----	DIN 912 8.8 / M5x35	----	Hex. socket h. cap screw
9	2-2304	----	----	1-1622.29	Carrier 21
10	2-2620	----	----	1-1622.29	Carrier bolt
11	2-2628	----	----	----	Bar, top
12	2-2636	----	----	----	Bar top, special
13	9-9509	----	DIN 6799	----	Retaining washer, loose 4
14	2-2650	----	----	----	Eccentric screw
15	9-9205	----	DIN 934 / M5	----	Hexagon thin nut 0,8 D
16	2-2303	----	----	----	Slide 21
17	2-2302	----	----	----	Guide plate
18	9-9058	----	DIN 7500 C / M4x8	----	Self drilling torx screw
19	2-2310	----	----	----	Comb 21
20	2-2311	----	----	----	Bracket
21	Page/of	Product	Serial No.	Date	----
22	18 / 23	CombBind C800Pro USA	RDP0001-	April 2005	----
					Wedge

Product CombBind C800Pro USA	Serial No. RDP0001-	Date April 2005	Page 19
---------------------------------	------------------------	--------------------	------------



<i>Pos.</i>	<i>New Part No.</i>	<i>Old Part No.</i>	<i>Notes</i>	<i>Pre-Assemble Set</i>	<i>Description</i>
1	2-2240	----	----	----	Bottom plate
2	9-9059	----	DIN 7500 C / M4x12	----	Self drilling torx screw
3	2-2271	----	----	----	Rubber foot (EPK)
4	2-5682	----	----	----	Connecting cable
5	2-5648	----	----	----	Footswitch hous.top E-Vers.
6	2-5685	----	----	----	Electr. board f. footswitch
7	2-5652	----	----	----	Pressure spring D-065
8	2-5647	----	----	----	Footswitch hous.bott. E-Vers.
9	2-4202	----	----	----	Rubber foot
10	2-5666	----	----	----	Type Label CombBind C800 pro
11	2-5653	----	----	----	Label "WARNING", USA

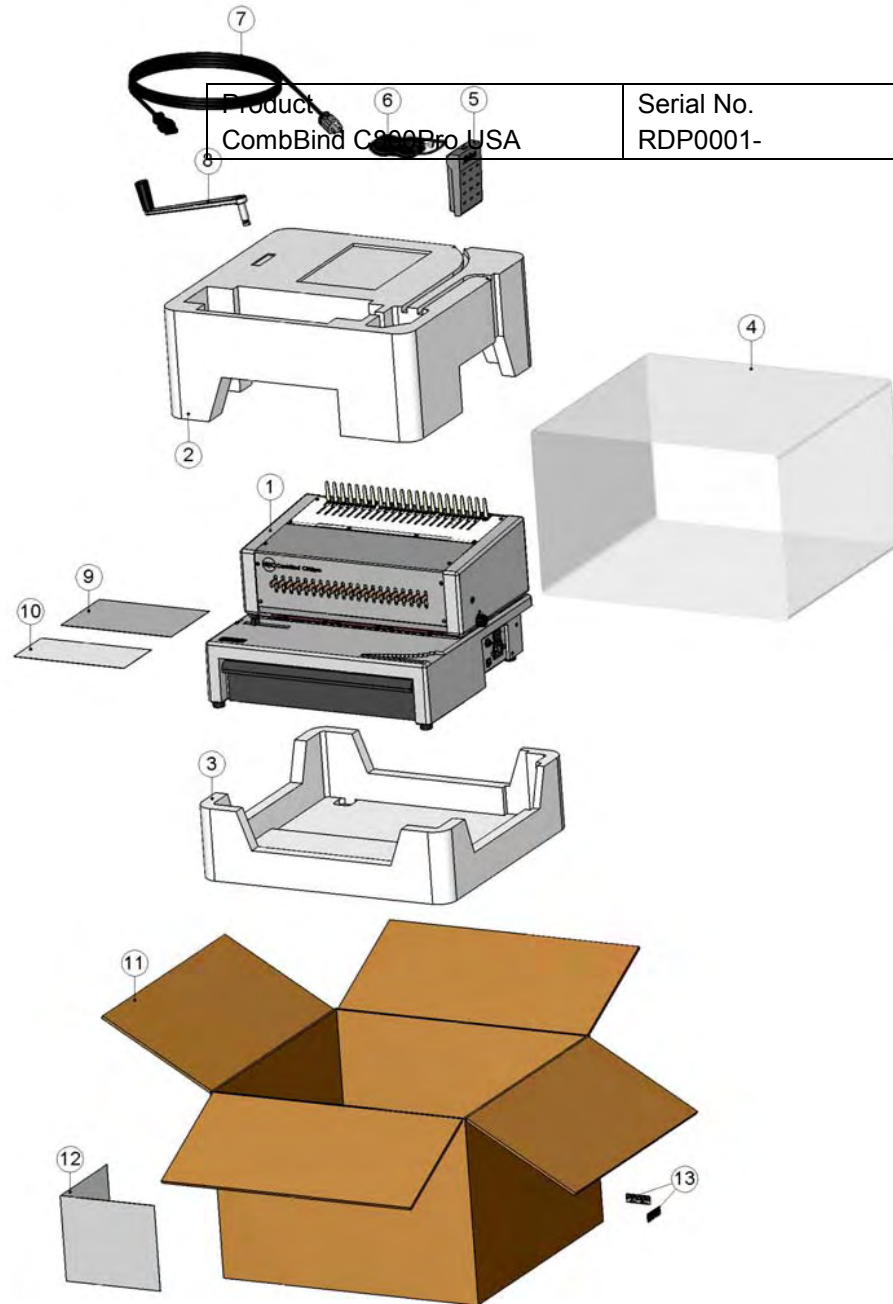
Page/of	Product	Serial No.	Date
20 / 23	CombBind C800Pro USA	RDP0001-	April 2005

Product
CombBind C800Pro USA

Serial No.
RDP0001-

Date
April 2005

Page
21



<i>Pos.</i>	<i>New Part No.</i>	<i>Old Part No.</i>	<i>Notes</i>	<i>Pre-Assemble Set</i>	<i>Description</i>
1	27170	----	----	----	CombBind C800Pro USA
2	8-8021	----	----	----	Pair side padding EPK / botton
3	8-8021	----	----	----	Pair side padding EPK / top
4	2-8034	----	----	----	Dust bag
5	1-5647	----	----	----	Footswitch cpl. IbiMaster
6	2-5682	----	----	----	Connecting cable
7	2-4048	----	----	----	Power cord USA
8	1-1613	----	----	----	Hand lever cpl., grey (EPK)
9	8-3602	----	----	----	Instr. manual CombBind C800pro
10	8-8155	----	----	----	Packing sheet caution
11	8-8089	----	----	----	Carton brown (EPK)
12	8-8011	----	----	----	Label CombBind C800Pro
13	Page/of 22 / 23	Product CombBind C800Pro USA	Serial No. RDP0001-	Date April 2005	Self a.label/UPC CombBind C800

Product CombBind C800Pro USA	Serial No. RDP0001-	Date April 2005	Page 23
---------------------------------	------------------------	--------------------	------------



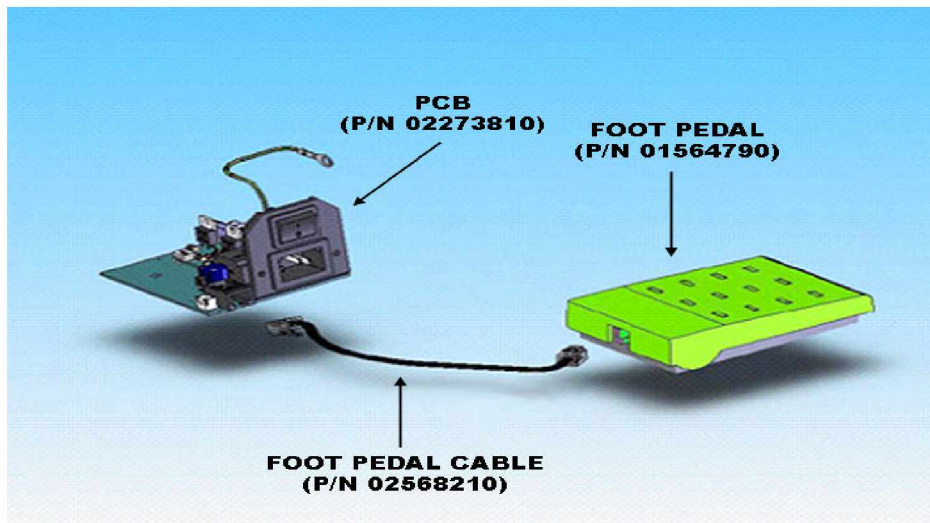
TECHNICAL SERVICE & SUPPORT BULLETIN

500 Bond St.
Lincolnshire, IL. 60069

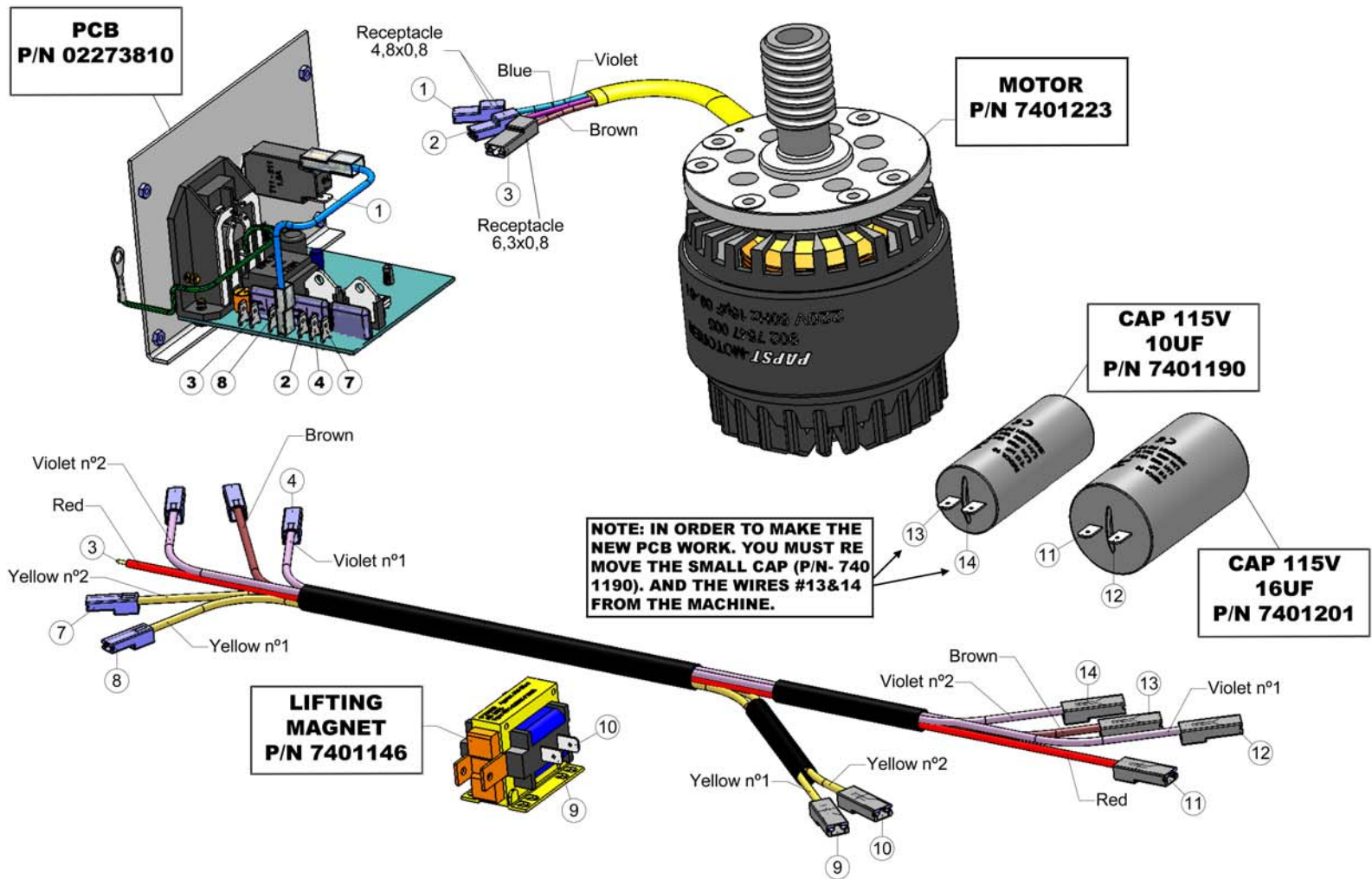
T.S.S.B	2009A	DATE: 6-16-06
MODEL:	EPK-21/C-800 PRO	
SUBJECT:	FOOT PEDAL/PCB CHANGE	PAGE: 1 of 1

The **EPK-21** and the **C-800 PRO** have some similar parts. **Therefore The Foot Pedal And PCB Are Not The Same.** The EPK-21 had a hard wired Foot Pedal and a different PCB. The C-800 PRO has a plug and play phone cord as shown in the diagram below. Please update your service manual with this information.

C-800 PRO



NOTE: IF YOU HAVE AN EPK-21 WITH A HARD WIRED FOOT PEDAL. YOU MUST REPLACE ALL OF THE PARTS SHOWN ABOVE.



C-800/EPK-21 NEW PCB WIRING DIAGRAM.