

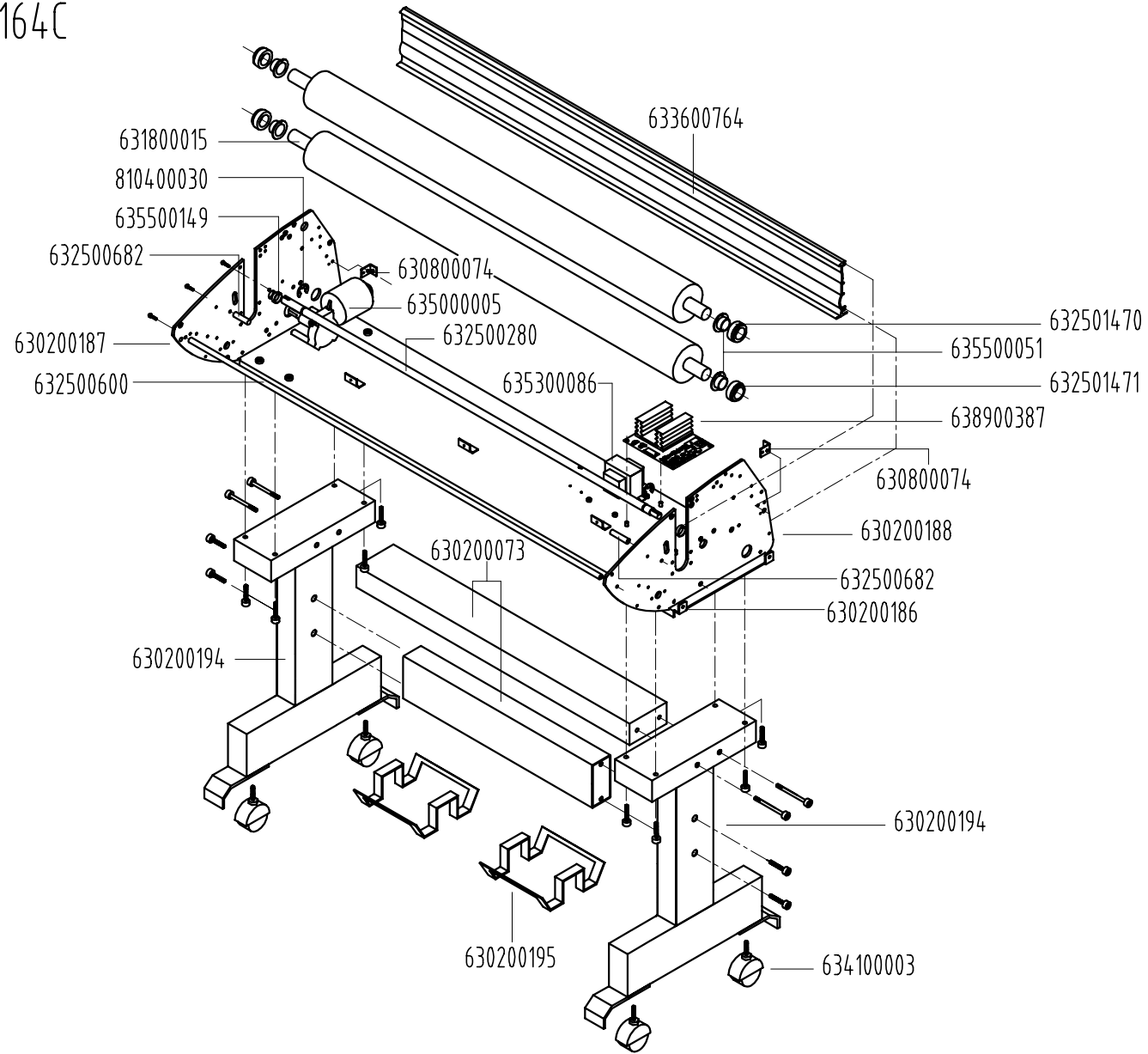



ARCTIC TITAN 1064WFc Parts List



GBC IS AN ACCO BRANDS COMPANY

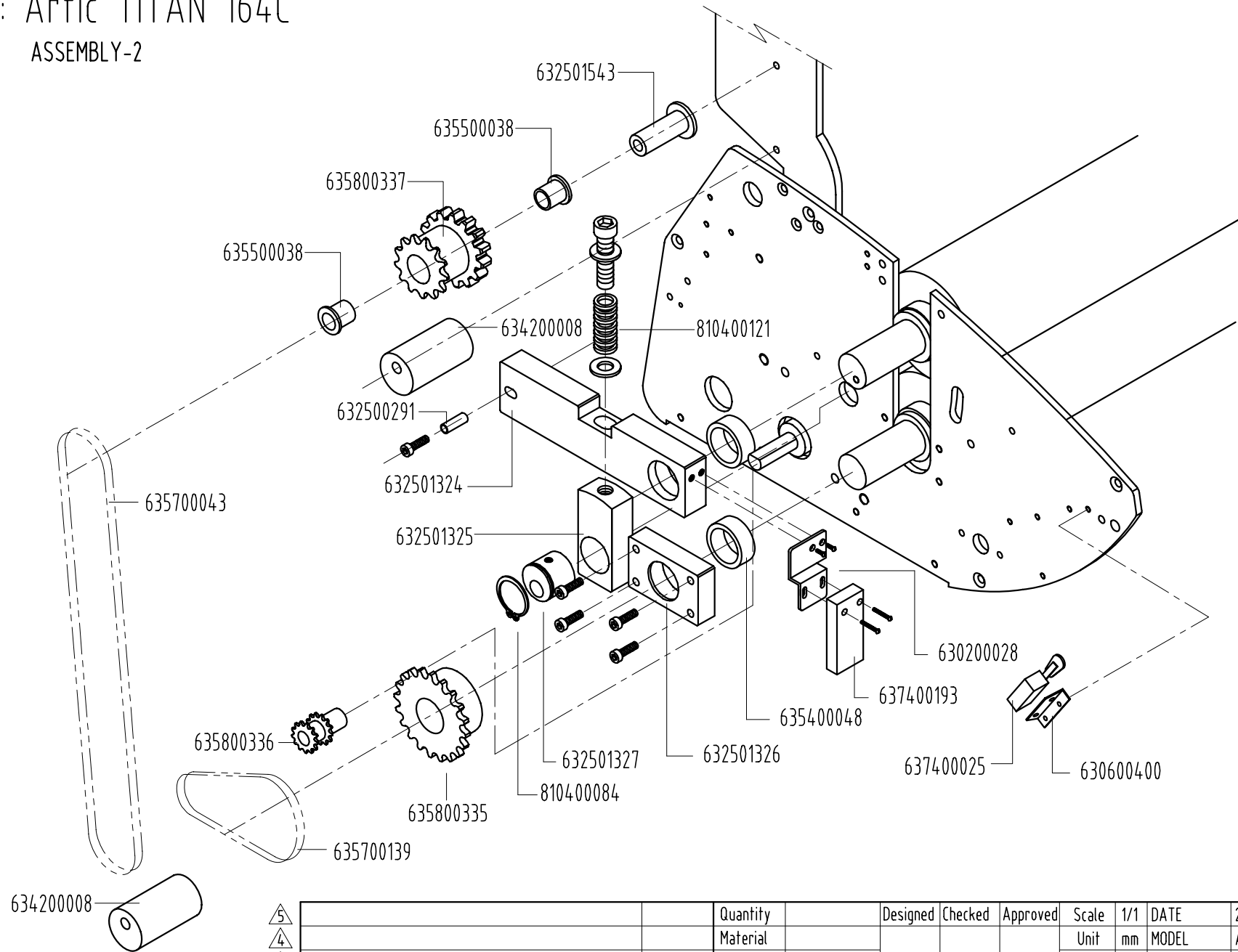
Model : Artic TITAN 164C
ASSEMBLY-1



5 4 3 2 1		Quantity	Designed	Checked	Approved	Scale	1/1	DATE	2006. 04. 06
		Material				Unit	mm	MODEL	ARTIC TITAN 164C
		Sur/finish				Project	3	PART NAME	ASSEMBLY-1
		Tolerance				 GMP CO., LTD		DRAWING No.	A14C-E0010
		Chamfer			PART CODE				
	REVISION	DATE							

Model : Artic TITAN 164C

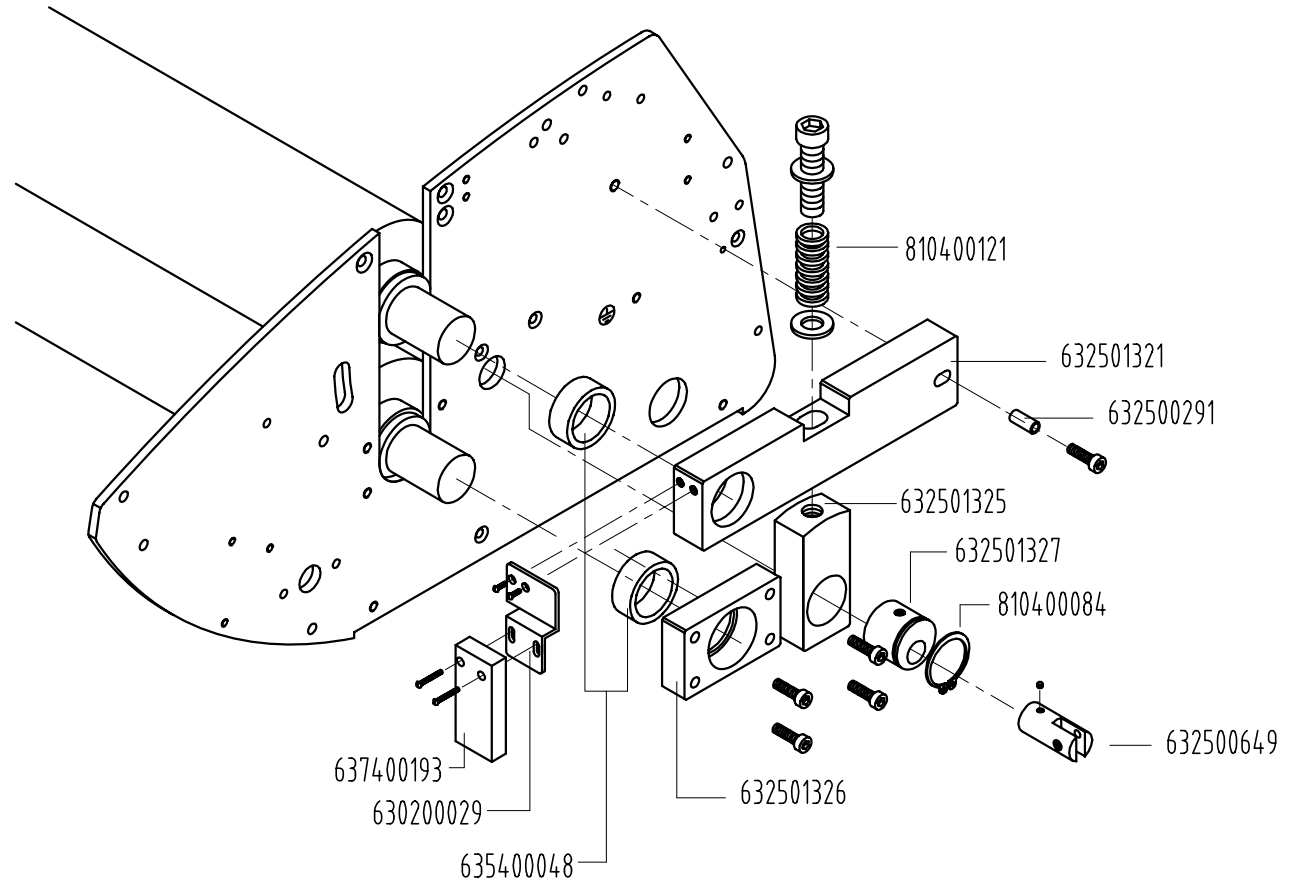
ASSEMBLY-2




- 5
- 4
- 3
- 2
- 1

		Quantity	Designed	Checked	Approved	Scale	1/1	DATE	2006. 04. 06
		Material				Unit	mm	MODEL	ARTIC TITAN 164C
		Sur/finish				Project	3	PART NAME	ASSEMBLY-2
		Tolerance						DRAWING No.	A14C-E0020
		Chamfer			PART CODE				
		Round							
	REVISION	DATE							

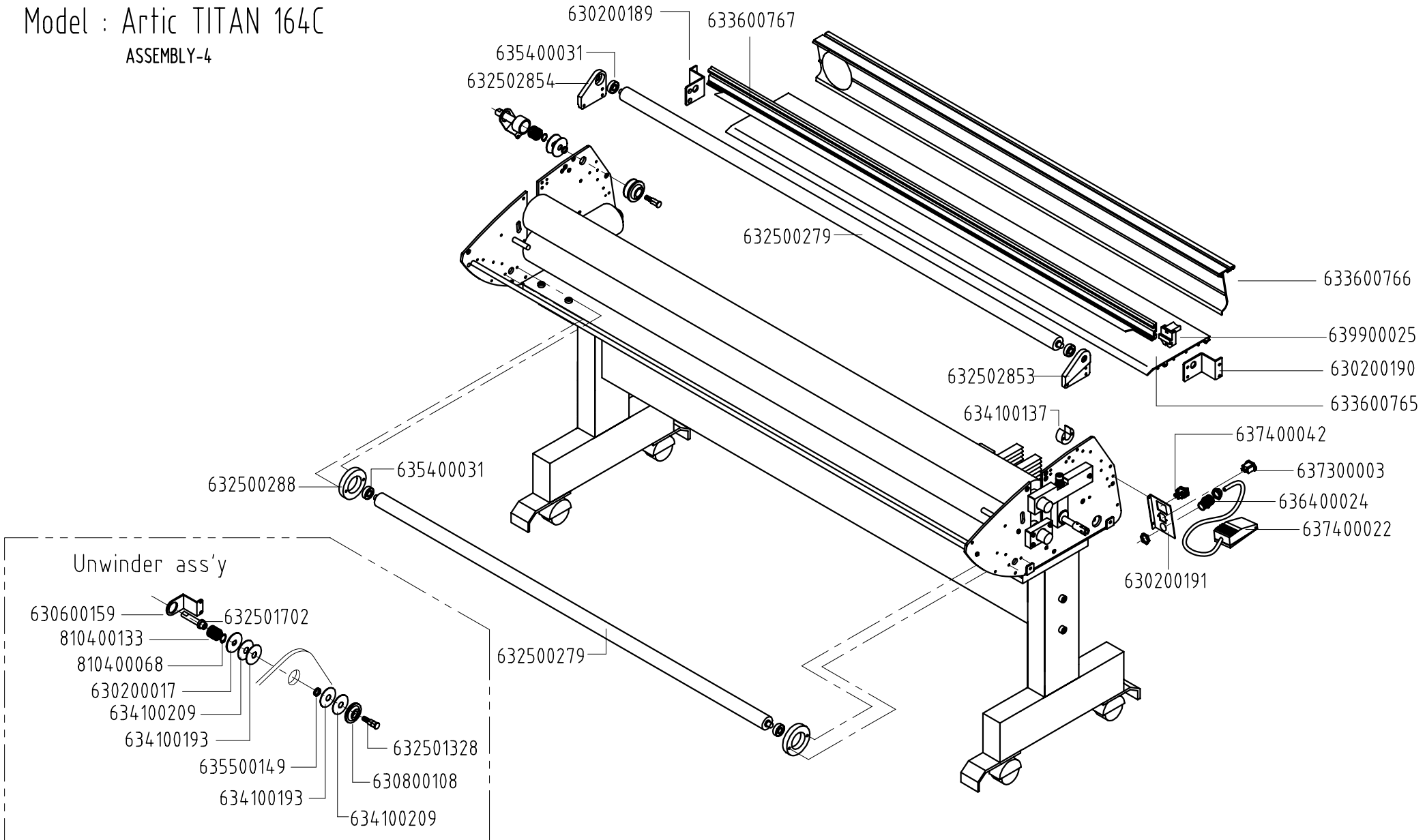
Model : Artic TITAN 164C
ASSEMBLY-3



5		Quantity		Designed	Checked	Approved	Scale	1/1	DATE	2006. 04. 06
4		Material					Unit	mm	MODEL	ARTIC TITAN 164C
3		Sur/finish					Project	3	PART NAME	ASSEMBLY-3
2		Tolerance		 GMP CO., LTD			DRAWING No.		A14C-E0030	
1		Chamfer					PART CODE			
		REVISION	DATE							

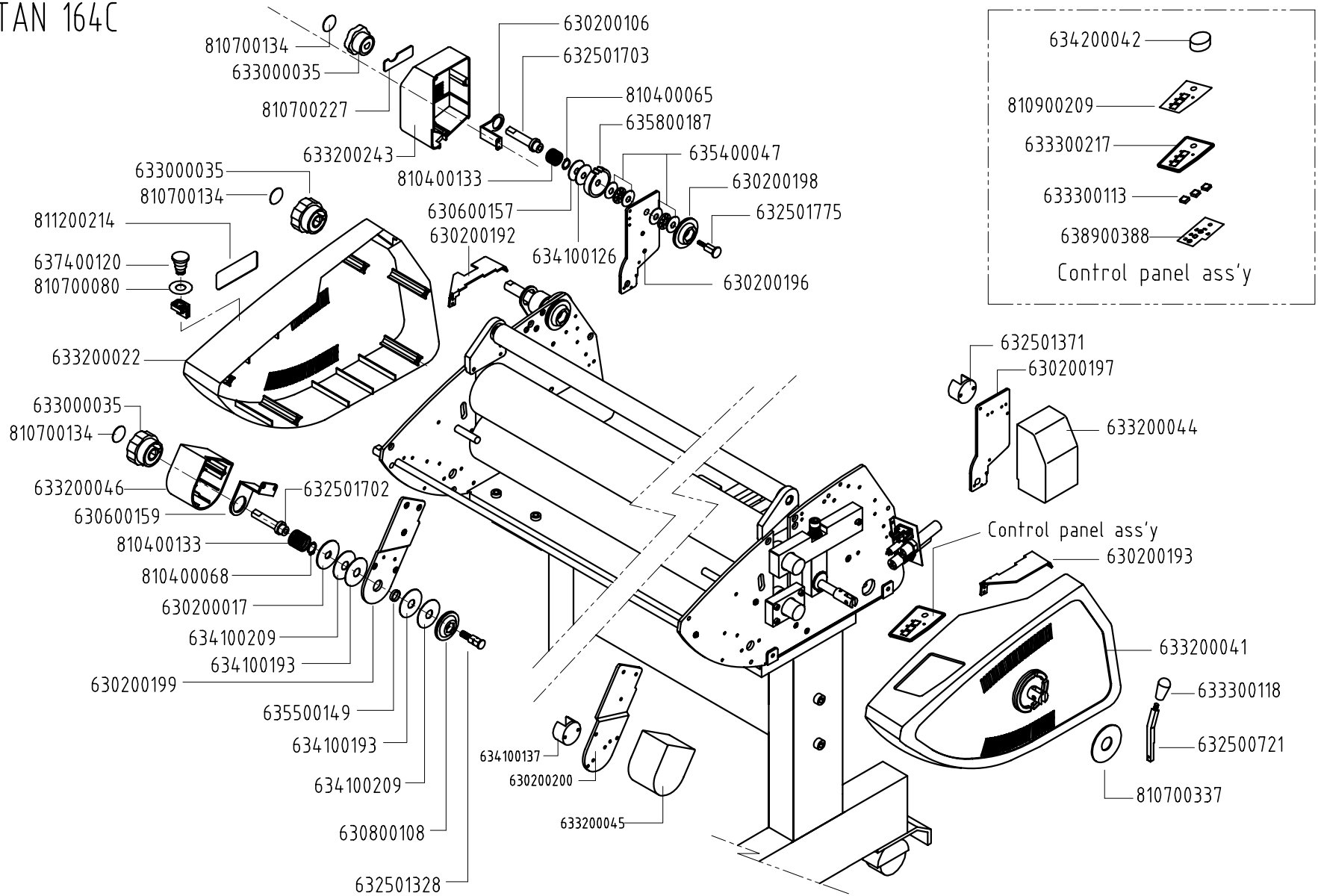
Model : Artic TITAN 164C

ASSEMBLY-4



5 4 3 2 1		Quantity	Designed	Checked	Approved	Scale	1/1	DATE	2006. 04 06
		Material				Unit	mm	MODEL	ARTIC TITAN 164C
		Sur/finish				Project	3	PART NAME	ASSEMBLY-4
		Tolerance						DRAWING No.	A14C-E0040
		Chamfer						PART CODE	
	REVISION	DATE							

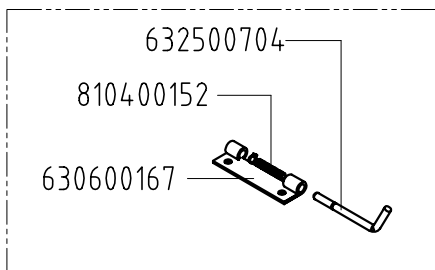
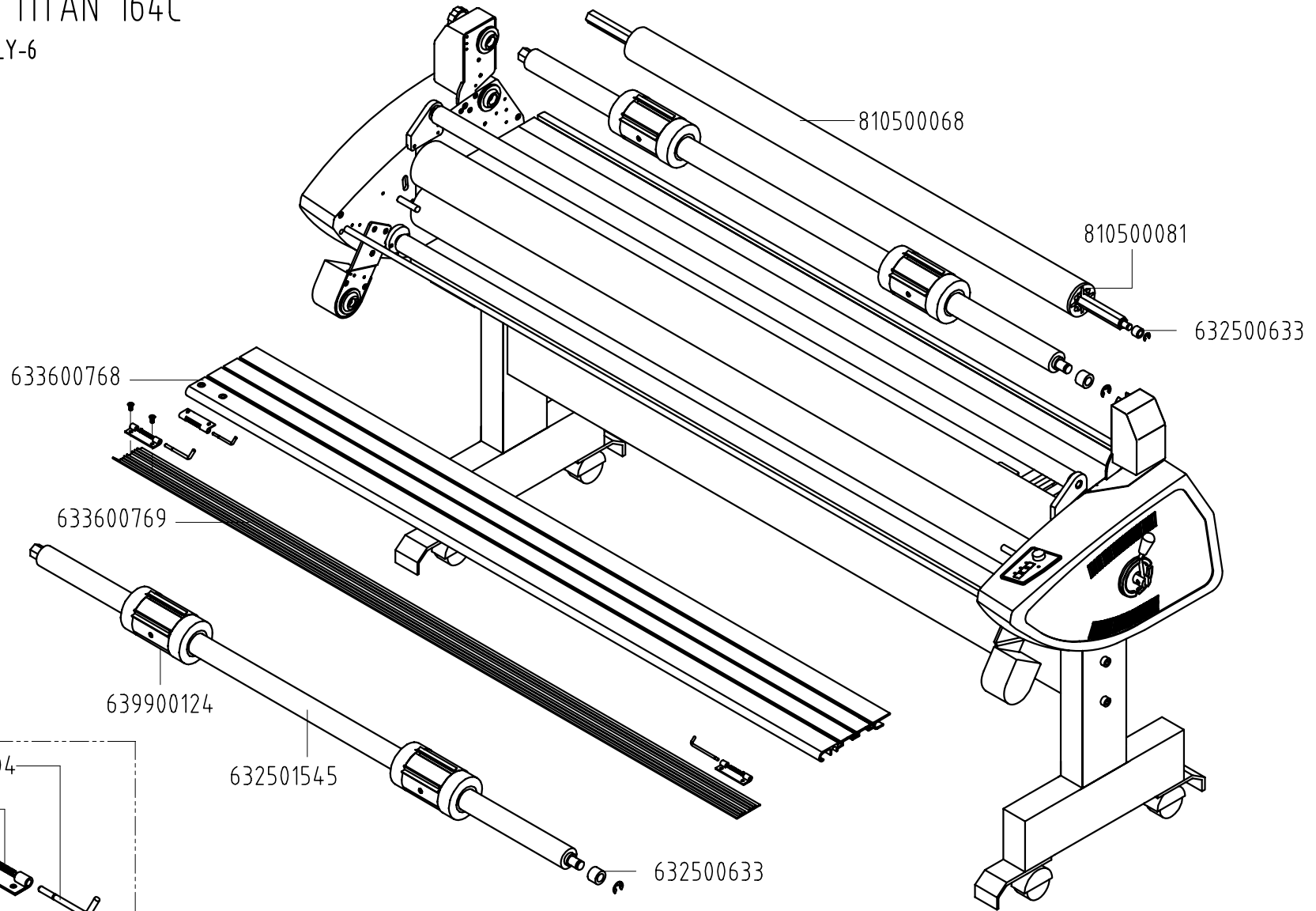
Model : Artic TITAN 164C
ASSEMBLY-5



$\begin{matrix} \triangle 5 \\ \triangle 4 \\ \triangle 3 \\ \triangle 2 \\ \triangle 1 \end{matrix}$	Quantity	Designed	Checked	Approved	Scale	1/1	DATE	2006. 04. 07
	Material				Unit	mm	MODEL	ARTIC TITAN 164C
	Sur/finish				Project	3	PART NAME	ASSEMBLY-5
	Tolerance				GMP CO., LTD		DRAWING No.	A14C-E0050
	Chamfer						PART CODE	
REVISION	DATE	Quantity	Material	Sur/finish	Tolerance	Chamfer	Round	

Model : Artic TITAN 164C

ASSEMBLY-6



<ul style="list-style-type: none"> 5 4 3 2 1 		Quantity	Designed	Checked	Approved	Scale	1/1	DATE	2006. 04. 07
		Material				Unit	mm	MODEL	ARTIC TITAN 164C
		Sur/finish				Project	3	PART NAME	ASSEMBLY-6
		Tolerance				GMP CO., LTD		DRAWING No.	A14C-E0060
		Chamfer			PART CODE				
	REVISION	DATE							

GBC 1064

GMP P/N	Items	Specification	Required Q'ty	Old P/N
630200017	COLD INSIDE TENSION DISC	FE3.0T*F48	2	601230714
630200073	PATRIOT-62C STAND CONNECTOR	SPSR 2.3T 100*50*1419	2	601250158
630200106	Q COLD TENSION BLOCK STOPPER	SPC3.0T 67.5*46	1	
630200186	A16C BOTTOM PLATE	SPC 3.0T 259*1739(EY-274) / A16C-B00	1	
630200187	A16C SIDE PLATE(L)	SPC5.0T 465.6*270 / A16C-B0020	1	
630200188	A16C SIDE PLATE (R)	SPC5.0T 465.6*270 / A16C-B0030	1	
630200189	A16C BLADE RAIL BRK(L)	SPC 3.0T 46*70(EY-274) / A16C-B0040	1	
630200190	A16C BLADE RAIL BRK(R)	SPC 3.0T 46*70(EY-274) / A16C-B0040	1	
630200191	A16C POWER PANEL	FE 1.5T 63.5*100*10.5(GY-124) / A16C-E	1	
630200192	A16C SIDE COVER CAP(L)	SPC 3.0T 146*44 (GY-124) / A16C-B0060	1	
630200193	A16C SIDE COVER CAP(R)	SPC 3.0T 146*44 (GY-124) / A16C-B0060	1	
630200194	A16C STAND ROD(L)	SPSR 2.3T 100*50*776(BK451)/A16C-S0	1	
630200195	A16C FILM BASKET(COLD)	FE3.0T*305*831 (BK-451)	2	
630200196	A16C REWINDER SUPPORT(L)(Q-CO	FE 4.5T*191.6*103.4(EY-274) / A16C-W0	1	
630200197	A16C REWINDER SUPPORT(R)(Q-CO	FE 4.5T*191.6*103.4(EY-274) / A16C-W0	1	
630200198	A16C OUTER TENSION DISC	FE 3.0*62*28*19(EY-274) / A16C-W0030	1	
630200199	A16C EXTEND PLATE(L)	SPC 164*60*F15 (EY-274) / A16C-W0040	1	
630200200	A16C EXTEND PLATE(R)	SPC 164*60 (EY-274) / A16C-W0040	1	
630200228	A16C STAND ROD(R)	SPSR 2.3T 100*50*776(BK451)/A16C-S0	1	
630200229	ARCTIC TITAN PHOTO SENSOR BRA	EGI 2.0T 44*13/A16C-B0180-P	1	
630200230	ARCTIC TITAN PHOTO SENSOR BRA	EGI 2.0T 44*13*F5/A16C-B0180-P	1	

GMP P/N	Items	Specification	Required Q'ty	Old P/N
630600157	EAGLE INSIDE TENSION DISC	FE 2.0T*f44	1	601230702
630600159	EAGLE TENSION BLOCK STOPPER	FE 3.0T*64.9*34*F20/EX00P181	2	601230708
630600167	EAGLE LEVER BRACKET	FE 1.5T*49*18	3	601230814
630600400	MICRO S/W BRACKET	FE 1.5T 38.5*46	1	601310508
630800074	SURE BACK COVER SUPPORT	FE2.0T*17*43	2	601211157
630800108	SURELAM OUTER TENSION DISC	FE 3.0*62*28*19	2	601230711
631800015	EXCELAM1600 COLD ROLLER	1805*F80*1645*F25 GRAY	2	607040517
632500279	1600COLD IDLE ROLLER(PL)	S45C 1667*F30*10*F10	2	613010162
632500280	1600COLD ECCENTRIC SHAFT(PL)	S45C F15*1773	1	613020162
632500288	COLD IDLE ROLLER BEARING HOU	BS 8.0T*F45*F26	2	613030585
632500291	EXCELAM COLD TENSION BLOCK F	SM20C F8*19.5	2	613030624
632500600	1600 COLD TIE BAR(PL)	S45C*F10*1669	1	613030136
632500633	EAGLE FILM SHAFT BUSH(PL)	f15.5*f10*11.0	3	613030301
632500649	CATENA ECCENTRIC SHAFT CAP	F20*57	1	613030421
632500682	GBC4265 SUPPORTS FOR FRONT TA	SM45C F10*20	2	613030541
632500704	ROLLER COVER SAFTY LEVER(LOW)	45C*F5*92	3	613030622
632500721	SURE ECCENTRIC LEVER(PL)	M10*117	1	613010113
632501321	ROLLER TENSION BLOCK(U/R)(PL)	S20C 19.0T*170*40	1	613030584
632501324	ROLLER TENSION BLOCK(U/L)(PL)	S20C 19.0T*170*40	1	613030593
632501325	ROLLER CAM BLOCK(LOW)(PL)	S20C 19.0T*110*40	2	613030594
632501326	ROLLER MOUNT(LOW)(PL)	S20C 15T*64*40	2	613030595
632501327	ECCENTRIC CAM(PL)	S20C 23T*F31	2	613030596
632501328	TENSION BOLT(PL)	S45C M8 52*F15	2	613030597
632501371	U STOPPER(1400 COLD)	BS F36*24	1	703070118
632501470	EXCELAM COLD ROLLER BUSH UP	BS F38*F25*32.8*16.5*15*10(2515F)	2	
632501471	EXCELAM COLD ROLLER BUSH LO	BS F38*F33.8*F25*16.5*15*10(2515F)	2	
632501543	Q-COLD IDLE PIN	S20C F15*F25*41.5/CLQ4HH110	1	
632501545	Q1600COLD FILM SHAFT(PL)	STKM3.2T F33.9*1659	2	

GMP P/N	Items	Specification	Required Q'ty	Old P/N
632501702	EAGLE TENSION BLOCK(PL)	S45C F25*F15*74	1	
632501703	CATENA TENSION BLOCK(PL)	S45C F25*F15*90	1	
632501710	E/M TENSION BLOCK(PL)	S45C F25*F15*102	1	
632501775	Q1120C REWINDER TENSION BOLT	SM45C f13.5*50.7*25	1	
632502853	A16C IDLE ROLLER SUPPORT(R)	S45C 10*73-63.5 / A16C-B0070	1	
632502854	A16C IDLE ROLLER SUPPORT(L)	S45C 10*73-63.5 / A16C-B0070	1	
633000035	CATENA TENSION KNOB	ABS F50*F15*30(GY-124)	3	604022152
633000209	FILM CORE COVER	ABS F43*F70.7*26	4	
633000210	FILM CORE COVER	ABS F43*F70.7*26	4	
633200022	SPARTAN SIDE COVER(L)	PC 3.2T*465*257*100	1	604020327
633200041	CATENA SIDE COVER(R)	PC 3.5T 471*276.6*75	1	604022150
633200044	CATENA REWINDER COVER(R)	PC 3.0T 93*162 (160g)	1	604022154
633200045	CATENA EXTENSION COVER(R)	PC 75.6*50(GY-124)	1	604022155
633200046	CATENA EXTENSION COVER(L)	PC 75.6*50(GY-124)	1	604022156
633200243	A16C REWINDER COVER(L)	PC 3.0T 93*162 (160g)	1	
633300113	PLASTIC KNOB(TACT S/W)	12MM/1103E	3	703021012
633300118	ECCENTRIC LEVER HANDLE	BACKLIGHT f8.0*85	1	703021051
633300217	A14C CONTROL PANEL	ABS 58*122(450-76274)	1	
633600139	FILM CORE WING	AL 84*13.4	24	604037010
633600717	FILM CORE HOUSING(3"-34mm)	AL F34*F70.7*105.5/BD34I010	4	
633600764	A16C FRONT COVER	AL 3.0T 30*125*1668 (EY-274) / A16C-B	1	
633600765	A16C REAR TABLE	AL 3.0T 13*184*1668 (EY-274) / A16C-B	1	
633600766	A16C REAR COVER(Q-COLD)	AL 3.0T 65.5*142.5*1668 (EY-274) / B01	1	
633600767	A16C BLADE RAIL	AL 2.0T 38*36*1749(EY-274)/A16C-B014	1	
633600768	A16C FRONT TABLE	AL2.3T*1667 (EY214) / A16C-B0150	1	
633600769	A16C PAPER GUIDE PLATE	AL1.5T*69*1666(EY-274) / A16C-B0160	1	
634100003	CASTER	10mm*40R	4	701130502
634100126	F45 CLUTCH SKIN PAD(F12)	SKIN 2.0T*F12*F45	1	703070101

GMP P/N	Items	Specification	Required Q'ty	Old P/N
634100137	U' STOPPER	BS F36*15.5	2	703070113
634100193	F15 CLUTCH PET PAD	PET 0.25T*F15*F55	4	
634100209	F45 CLUTCH SKIN PAD(F15)	SKIN 2.0T*F15*F45	4	
634200008	COLD CHAIN TAKE UP	F30*55*8.0	2	703040207
634200042	KNOB (EXCELAM COLD)	NYLON66 F28*11	1	
634300057	HEXAGON CORE "O" RING-2	P60 (F59.6*5.7T)	4	703010346
635000005	DC GEARED MOTOR(DM012)	DC 35V 100W	1	6090205
635300086	TRANSFORMER GM7660EX-12	GM7660EX-12	1	610011904
635400031	BALL BEARING	#6000ZZ	4	701010152
635400047	THRUST NIDDLE ROLL BEARING A	AXK1226+AS	2	701020205
635400048	DRAWN CUP NIDDLE BEARING	HK2512	4	701020206
635500051	DU BUSHING FLANGE	25*15	4	701050258
635500149	DU BUSHING TUBE	15*04	4	701050183
635500186	DU BUSHING FLANGE	15*15(JAPAN)	2	
635700043	ROLLER CHAIN	RS25H(54PCS)	1	701070154
635700139	ROLLER CHAIN RS35H	RS35H(22.5PCS)	1	
635800187	STEEL SPUR GEAR	49T*f12/DC,SS	1	701080125
635800335	STEEL CHAIN GEAR(RS#35)	RS35 27T*F25 (HEAT ROLLER)	1	
635800336	STEEL CHAIN(RS25)+CHAIN GEAR	RS25 15T+RS35 13T*F10(MOTOR)	1	
635800337	STEEL CHAIN(RS25H)+SPUR GEAR	RS25 21T+M1 43T*F17(REWINDER)	1	
636400024	CORD STOPPER	PG11	1	704140406
636600104	CORD PLUG INLET 125V UL	3P 0.75/10A SJT(SET)	1	704031012
636900054	GLASS TUBE FUSE 20mm	5*20 2.0A 250V	1	704130114
637300003	INLET SOCKET(FUSE HOLDER)	250V10A(0717)	1	704110103
637400022	FOOT SWITCH	HRF-MD1(220V10A)	1	704090603
637400025	MICRO SWITCH (EAGLE)	250V/15A(VP-531A-3H)2	1	704090411
637400042	POWER S/W ROCKER	DPDT 250V16A(310B5NR)	1	704090102
637400120	EMERGENCY SWITCH	AR22V22R-02R(ZB2-BS544)400V(2POL)	1	704090253

GMP P/N	Items	Specification	Required Q'ty	Old P/N
637400193	PHOTO SENSOR	HP100-T1	1	
638003581	WIRE 44C INLET TO POWER S/W	UL1007#18(BLACK)L100 250R/187R	1	
638003588	WIRE 44C TABLE MICRO S/W	UL1007#18(BRN)L2000 M5557/187R	1	
638003589	WIRE 164C AC IN WIRE	UL1007#18(BLK/BRN)L500 M5557/250R	1	
638003590	WIRE 164C FOOT S/W EXT	UL1007#18((WHI/BRN)L350 M5557/M55	1	
638003591	WIRE 164C MAIN MOTOR EXT	UL1007#18(RED/BLK)L1200 M5557/M55	1	
638003592	WIRE 164C DISPLAY SIGNAL	UL1007#26(8COLOR)L800 M5264/M526	1	
638003593	WIRE 164C EMERGENCY S/W	UL1007#18(ORG/ORG)L2100 M5557/857	2	
638900387	ASS'Y PCB 44C MAIN PCB	AT14M REV1.0	1	
638900388	ASS'Y PCB 140C DISPLAY PCB	AT14D REV1.0	1	
639900025	EXCELAM II BACK TRIMMER ASS'Y	PC 920-70625	1	706111121
640100005	BALL CHAIN	F2.3*100	4	
640500027	START ROLL	CRY-T25/CL 25(25/25)*R1550*7m	1	
710100022	TOOL L WRENCH SET	HEX KEY 8 PCS	1	701130420
710400267	C/T BOX ARCTIC TITAN 164C	2055*695*1240 ARCTIC TITAN 164C	1	
810100068	SPRING WASHER	f8	16	701110312
810300028	CAP/B HEXAGON SOCKET HEAD M	M10*80CHS	2	701107616
810300057	CAP/B HEXAGON SOCKET HEAD M	M4.0*14CHS	1	701107207
810300058	CAP/B HEXAGON SOCKET HEAD M	M4.0*16CHS	24	701107208
810300065	CAP/B HEXAGON SOCKET HEAD M	M5.0*8CHS	4	701107303
810300066	CAP/B HEXAGON SOCKET HEAD M	M5.0*10CHS	4	701107304
810300070	CAP/B HEXAGON SOCKET HEAD M	M5.0*20CHS	8	701107308
810300084	CAP/B HEXAGON SOCKET HEAD M	M6.0*12CHS	1	701107405
810300086	CAP/B HEXAGON SOCKET HEAD M	M6.0*16CHS	11	701107407
810300088	CAP/B HEXAGON SOCKET HEAD M	M6.0*25CHS	2	701107409
810300104	CAP/B HEXAGON SOCKET HEAD M	M8.0*10CHS	8	701107502
810300115	CAP/B HEXAGON SOCKET HEAD M	M8.0*55CHS	1	701107513
810300116	CAP/B HEXAGON SOCKET HEAD M	M8.0*60CHS	8	701107514

GMP P/N	Items	Specification	Required Q'ty	Old P/N
810300117	CAP/B HEXAGON SOCKET HEAD M8	M8.0*65CHS	8	701107515
810300118	CAP/B HEXAGON SOCKET HEAD M8	M8.0*70CHS	4	701107516
810300123	CAP/B HEXAGON SOCKET HEAD M8	M8.0*120CHS	8	701107521
810300383	M/S ROUND HEAD M5.0RH	M5.0*10RH WHT	6	701100408
810300490	M/S SAMS M5.0RH	M5.0*20RH SPRING WHT	4	701109114
810300698	SET SCREW HEXAGON SOCKET M5	M5.0*8SET	8	701106303
810300707	SET SCREW HEXAGON SOCKET M6	M6.0*10SET	2	701106403
810300719	SET SCREW HEXAGON SOCKET M8	M8.0*16SET	8	701106505
810300776	T/S FLAT HEAD 1CLASS T4.0FH	T4.0*12FH1C WHT	8	701102508
810300796	T/S FLAT HEAD 1CLASS T5.0FH	T5.0*8FH1C WHT	6	701102604
810300872	T/S FLAT HEAD 2CLASS T4.0FH	T4.0*12FH2C WHT	6	701104508
810301150	T/S SAMS 2CLASS T4.0RH	T4.0*12RH STAR WHT	8	701109123
810301289	T/S TRUSS HEAD 2CLASS T4.0TH	T4.0*6TH2C WHT	2	701104902
810301290	T/S TRUSS HEAD 2CLASS T4.0TH	T4.0*8TH2C BLK	4	701104903
810400024	SPRING E RING	f7.0mm	4	701090606
810400030	SPRING E RING	F15.0	2	701090615
810400065	SPRING S RING	12	1	701090706
810400068	SPRING S RING	15	2	701090709
810400084	SPRING S RING	26	2	701090725
810400121	ROLLER SPRING	3.0T*38MM	2	701090126
810400133	ROLL FILM PIPE SPRING	3.5T*F26*24MM	3	701090141
810400152	SAFETY LEVER SPRING	0.8T*30mm	3	701090160
810500046	RUST FILM(1400/1600COLD)	B/T 1200*2400	1	801060302
810500068	FILM CORE	F58*8T*1600	1	804020407
810500081	CORE ADAPTER 58MM	OFFICE-HR	2	8050112
810700080	EMERGENCY STICKER(HR2)	PC0.25T*F28*F60	1	803040341
810700134	EXCELAMII TENSION KNOB STICKER	F37(GRAY)	3	803040421
810700227	Q1670 REWINDER COVER STICKER	AL1.0T 61*20(GRAY)	1	

GMP P/N	Items	Specification	Required Q'ty	Old P/N
810700337	A164C ROLLER TENSION STICKER	PC0.4T F74*F25/A16C-B0170	1	