



# 6250/6360LM Parts List



GBC IS AN ACCO BRANDS COMPANY

6250 - 1 & 6360 - 1

PARTS LIST

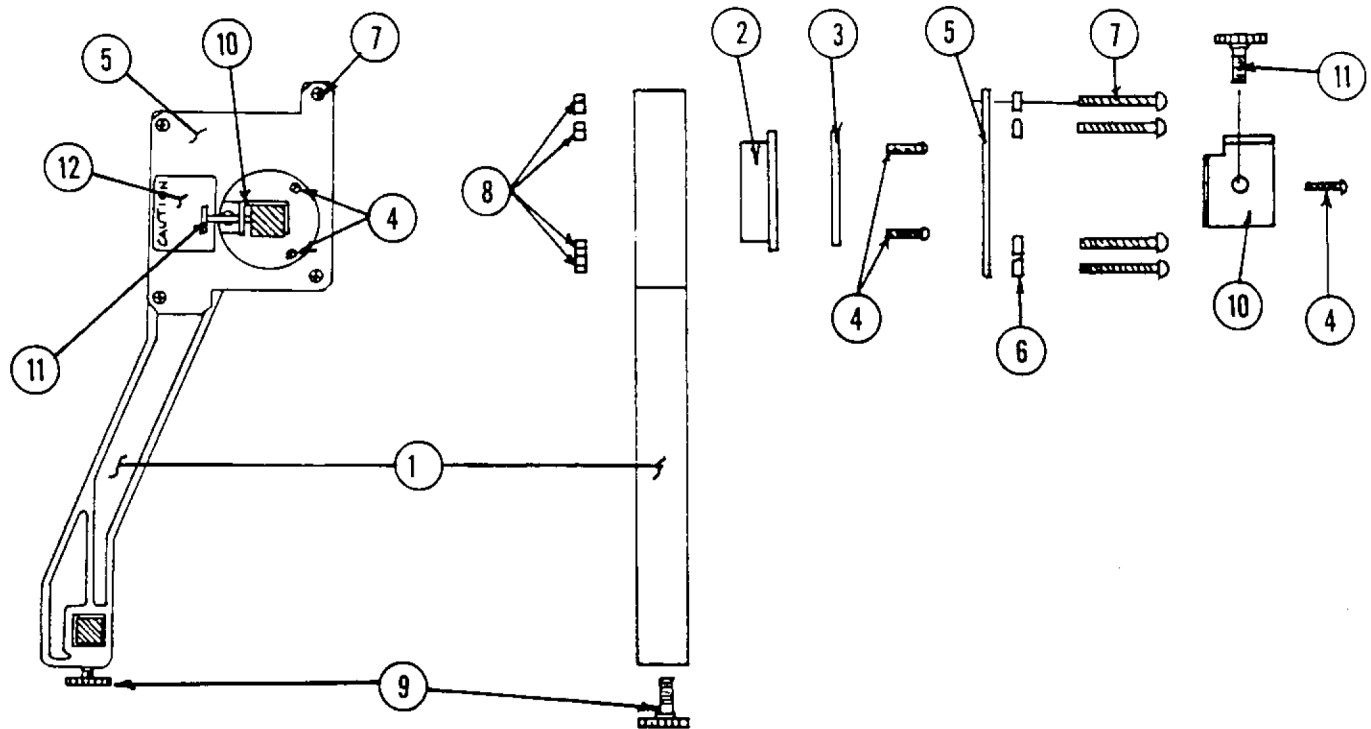


FIGURE 10.14.1

ITEM NO.	PART NUMBER	DESCRIPTION	6250-1	6360-1
1	1152299	SLITTER ARM . . . . .	3	3
2	1152298	SLITTER HOLDER. . . . .	3	3
3	1152286	CLAMP PLATE, SLITTER. . . . .	3	3
4	1911109	SCREW, 6-32 X 1/4". . . . .	9	9
5	1152297	RETAINER, SLITTER . . . . .	3	3
6	1925202	WASHER, 11/64" FLAT . . . . .	12	12
7	1902812	SCREW, #6-32 X 7/8" . . . . .	12	12
8	1926801	NUT, #6-32. . . . .	12	12
9	1140078	KNOB, KNURLED SCREW . . . . .	3	3
10	1152653	BRACKET, SLITTER. . . . .	3	3
11	1914203	SCREW, #10-32 X 1/2" KNURLED. . . . .	3	3
12	1140051	LABEL, SLITTER BLADE CAUTION. . . . .	6	6

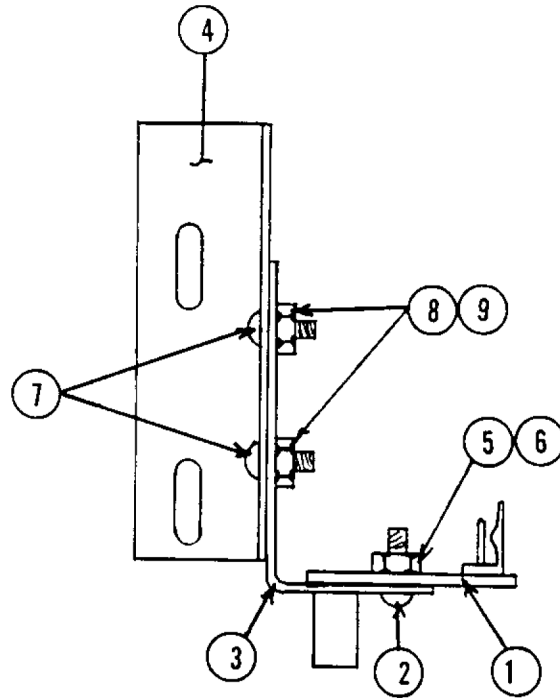


FIGURE 10.14.2

ITEM NO.	PART NUMBER	DESCRIPTION	6250-1	6360-1
1	1152279	INTERRUPTER BOARD . . . . .	1	1
2	1902842	SCREW, #4-40 X 3/8" . . . . .	2	2
3	1152228	MOUNTING BRACKET, MOTOR SENSOR. . . . .	1	1
4	1152229	BRACKET, MOTOR SENSOR . . . . .	1	1
5	1925801	LOCKWASHER, #8. . . . .	2	2
6	1926704	NUT, #4-40. . . . .	2	2
7	1911109	SCREW, #6-32 X 1/4" . . . . .	2	2
8	1925007	WASHER, #6 FLAT . . . . .	2	2
9	1926614	NUT, #6-32. . . . .	2	2

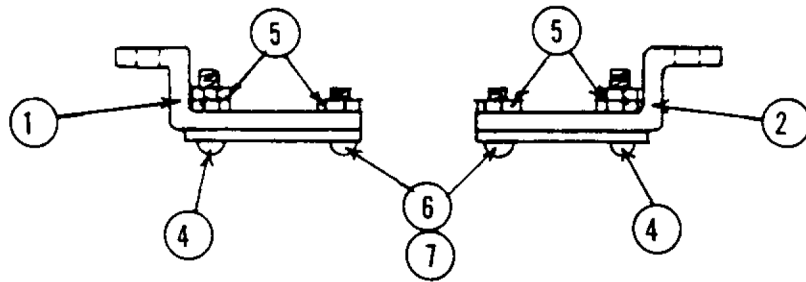
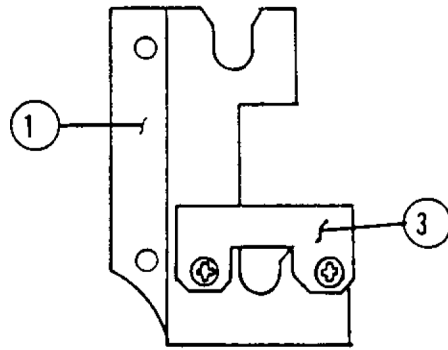
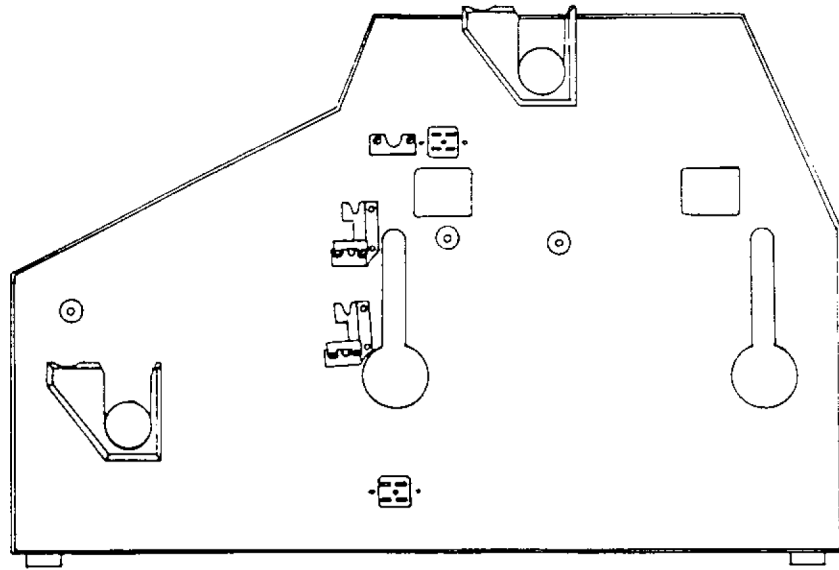


FIGURE 10.14.3

ITEM NO.	PART NUMBER	DESCRIPTION	6250-1	6360-1
1	1152474	HEATER BRACKET, RIGHT . . . . .	2	2
2	1152475	HEATER BRACKET, LEFT. . . . .	2	2
3	1152476	LATCH, HEATER BRACKET . . . . .	4	4
4	1902806	SCREW, #8-32 X 5/8" . . . . .	4	4
5	1926702	NUT, #10-32 . . . . .	12	12
6	1900508	SCREW, #8-32 X 1/4" . . . . .	4	4
7	1925806	LOCKWASHER, #8. . . . .	4	4

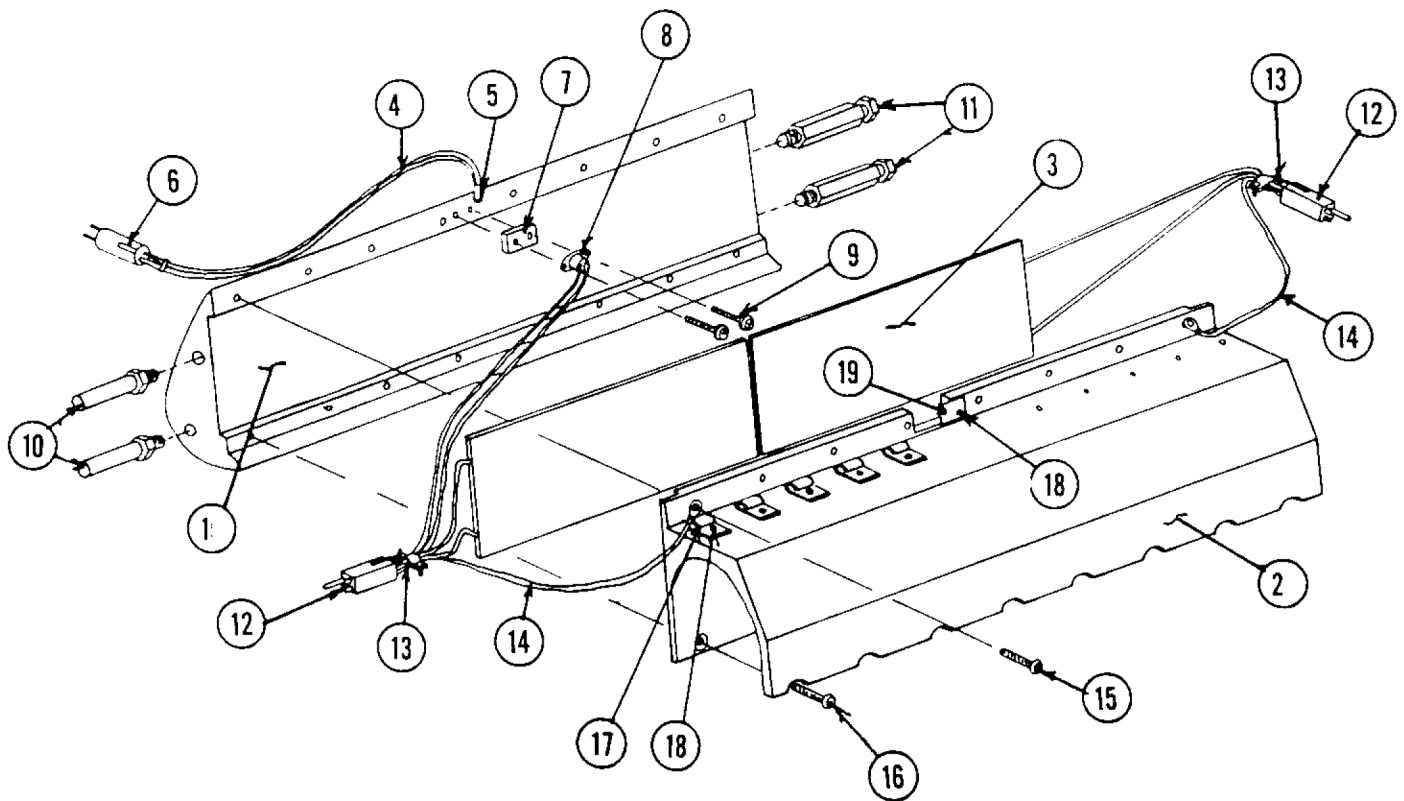


FIGURE 10.14.4

ITEM NO.	PART NUMBER	DESCRIPTION	6250-1	6360-1
1	1152222	HEAT SHOE, 25" . . . . .	2	
	1152224	HEAT SHOE, 36" . . . . .		2
2	1152219	COVER, 25" ROLLER . . . . .	2	
	1152220	COVER, 36" ROLLER . . . . .		2
3	1152639	HEATER ELEMENT. . . . .	4	
	1152640	HEATER ELEMENT. . . . .		4
4	1118556	SENSOR, RTD . . . . .	2	2
5	1954325	INSULATING SLEEVE . . . . .	2	2
6	1152347	PLUG, 2 CONTACT . . . . .	2	2
7	1154840	MOUNTING BLOCK, THERMOSTAT. . . . .	2	2
8	1154841	THERMOSTAT. . . . .	2	2
9	1902842	SCREW, #4-40 X 3/8" PAN HD. . . . .	4	4
10	1152654	POST. . . . .	4	4
11	1152655	POST, GROOVED . . . . .	4	4
12	1152265	CONNECTOR, MALE . . . . .	4	4
13	1954334	SHRINK TUBE . . . . .	4	4
14	1152284	LEAD & TERMINAL (GREEN) . . . . .	4	4
15	1902853	SCREW, #10-24 X 5/8" PAN HD. . . . .	16	20
16	1902643	SCREW, #10-24 X 3/8" FLAT HD. . . . .	16	20
17	1152308	SPRING CLIP . . . . .	10	14
18	1907812	SCREW, #4-40 X 1/4" . . . . .	12	16
19	1152311	SPRING. . . . .	2	2

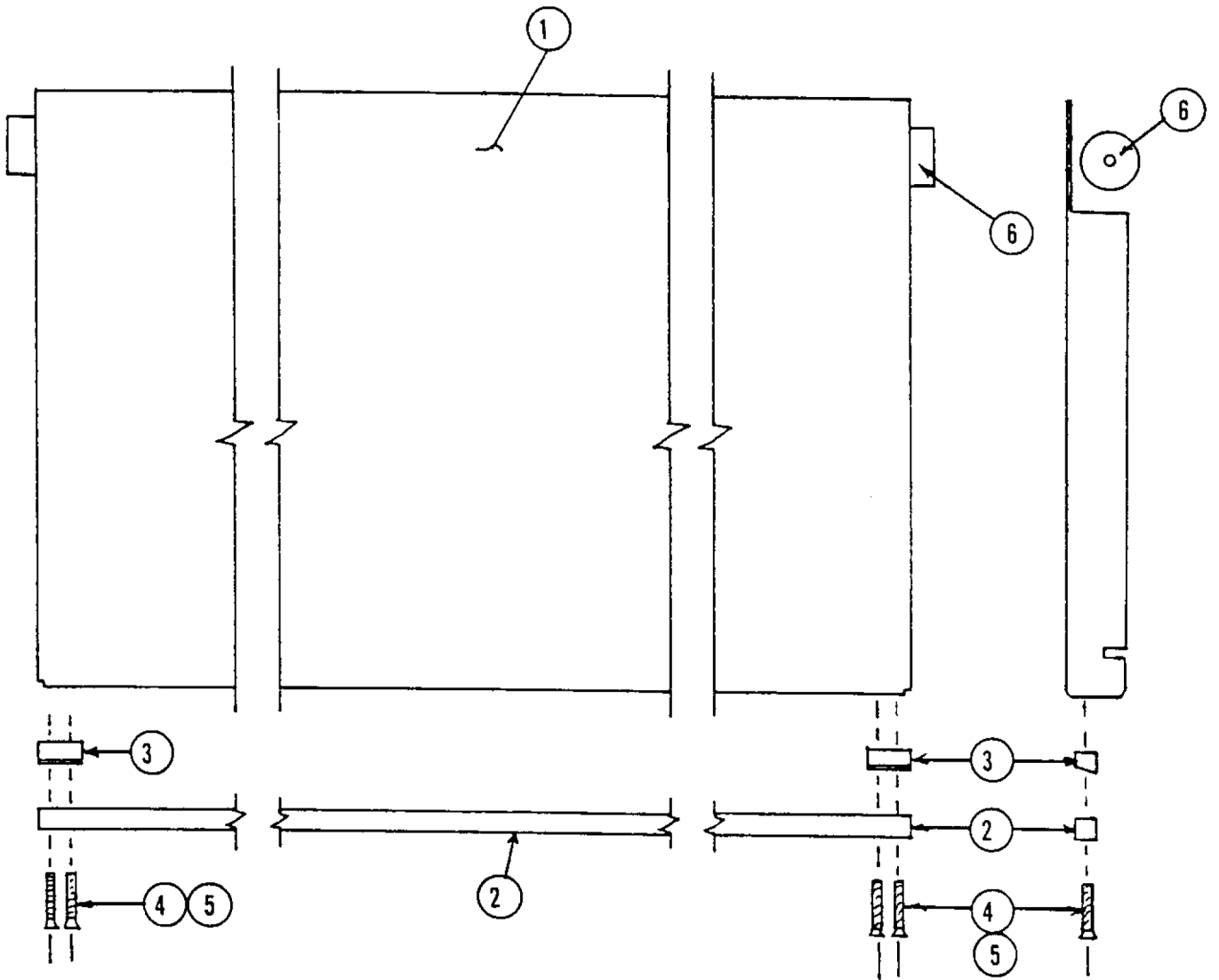


FIGURE 10.14.5

ITEM NO.	PART NUMBER	DESCRIPTION	6250-1	6360-1
1	1152491	FEED TABLE, 25" . . . . .	1	
	1152490	FEED TABLE, 36" . . . . .		1
2	1152650	SUPPORT BAR, 25" GUIDE TRAY . . . . .	1	
	1152651	SUPPORT BAR, 36" GUIDE TRAY . . . . .		1
3	1152652	SPACER, GUIDE TRAY. . . . .	2	2
4	1902628	SCREW, #10-32 X 1-1/2". . . . .	4	4
5	1926702	NUT, #10-32 . . . . .	4	4
6	1152488	BAR, 25" TRAY SUPPORT . . . . .	1	
	1152489	BAR, 36" TRAY SUPPORT . . . . .		1

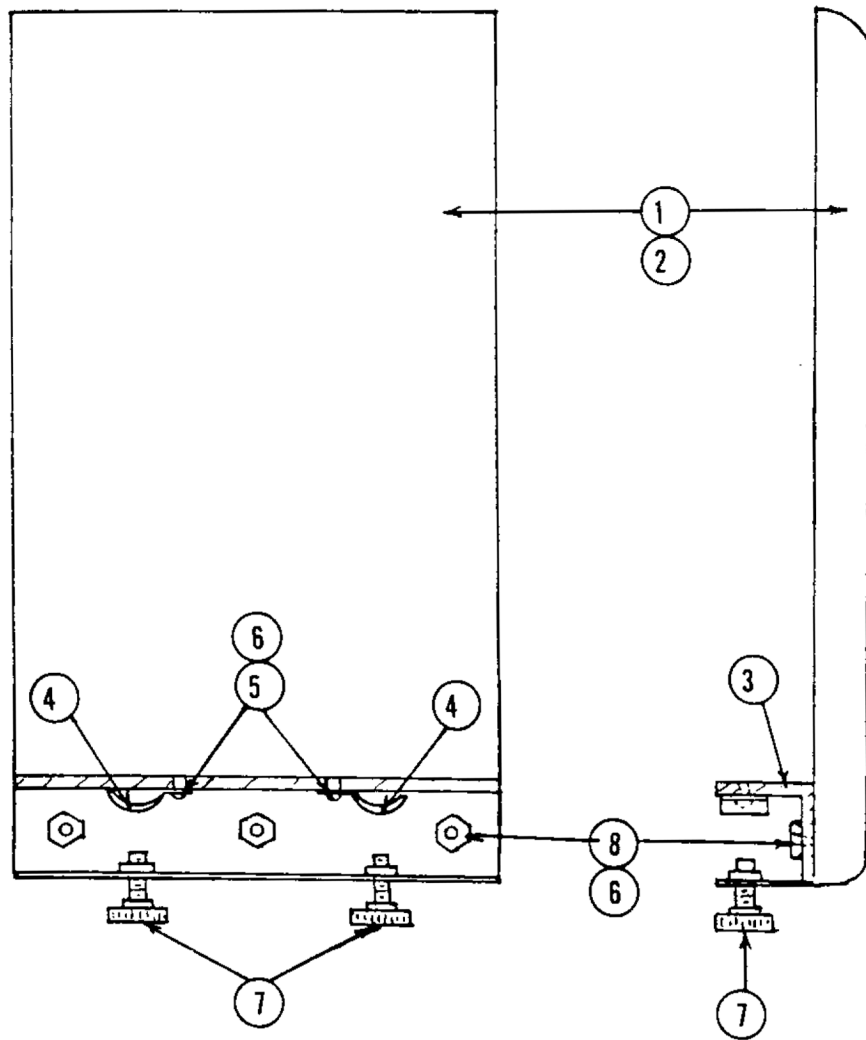


FIGURE 10.14.6

ITEM NO.	PART NUMBER	DESCRIPTION	6250-1	6360-1
1	1152667	GUIDE TRAY, LEFT. . . . .	1	1
2	1152664	GUIDE TRAY, RIGHT . . . . .	1	1
3	1152648	GUIDE CHANNEL . . . . .	2	2
4	1152649	SPRING, GUIDE BLOCK . . . . .	4	4
5	1902803	SCREW, #6-32 X 1/4" PAN HD. . . . .	4	4
6	1925904	LOCKWASHER, #6. . . . .	10	10
7	1140078	KNOB, KNURLED SCREW . . . . .	4	4
8	1926707	NUT, #6 . . . . .	10	10

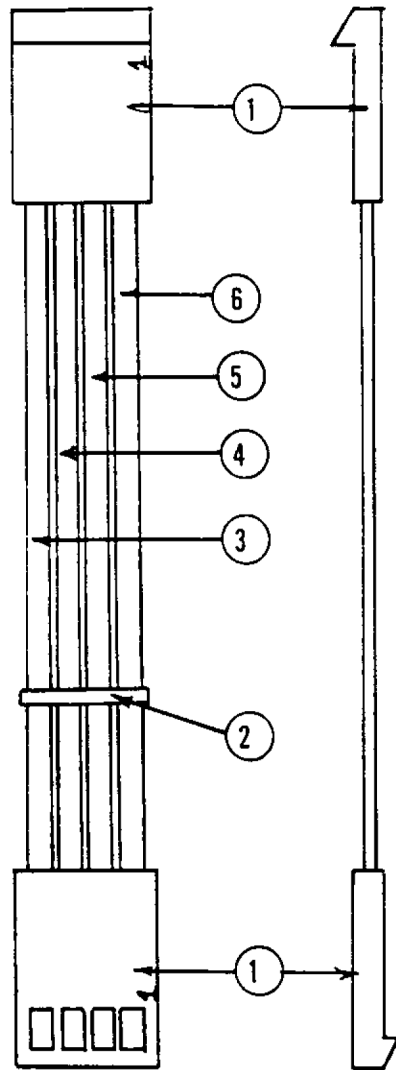


FIGURE 10.14.7

ITEM NO.	PART NUMBER	DESCRIPTION	6250-1	6360-1
1	1951302	CONNECTOR 4 PIN SOCKET. . . . .	2	2
2	1932121	WIRE TIE. . . . .	5	5
3	1152439	LEAD & TERMINAL (GREEN) . . . . .	1	1
4	1152440	LEAD & TERMINAL (RED) . . . . .	1	1
5	1152441	LEAD & TERMINAL (ORANGE) . . . . .	1	1
6	1152442	LEAD & TERMINAL (BLUE) . . . . .	1	1

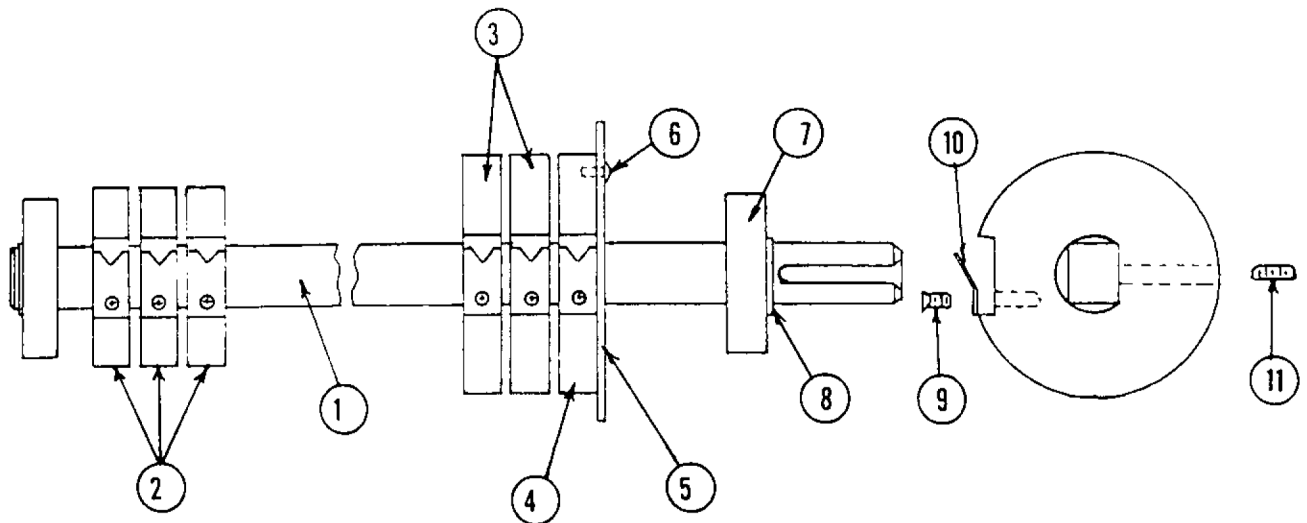


FIGURE 10.14.8

ITEM NO.	PART NUMBER	DESCRIPTION	6250-1	6360-1
1	1152334	SUPPLY MANDREL, 25" . . . . .	2	
	1152333	SUPPLY MANDREL, 36" . . . . .		2
2	1152661	CORE ADAPTOR, 2-1/4" . . . . .	6	6
3	1152658	CORE ADAPTOR, 3" . . . . .	4	4
4	1152659	CORE ADAPTOR, END . . . . .	2	2
5	1152660	PLATE, CORE ADAPTOR . . . . .	2	2
6	1911116	SCREW, #6-32 X 3/8" . . . . .	6	6
7	1140515	BEARING . . . . .	4	4
8	1930521	RETAINING RING. . . . .	4	4
9	1902803	SCREW, #6-32 X 1/4" . . . . .	12	12
10	1152656	CLIP, CORE ADAPTOR. . . . .	12	12
11	1900063	SET SCREW, #1/4-20 X 1/2" . . . . .	12	12