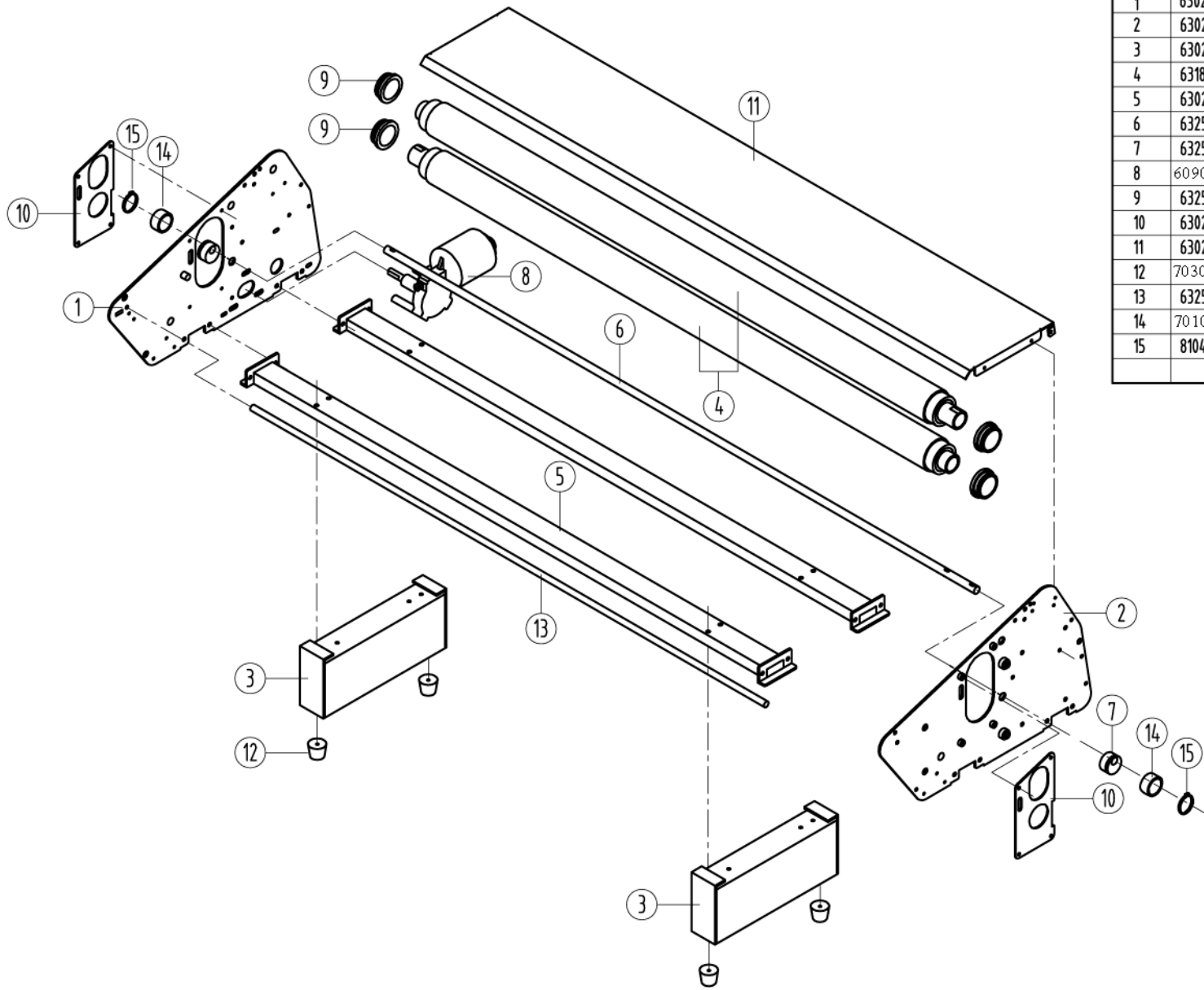




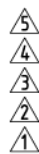
44C Parts List



GBC IS AN ACCO BRANDS COMPANY

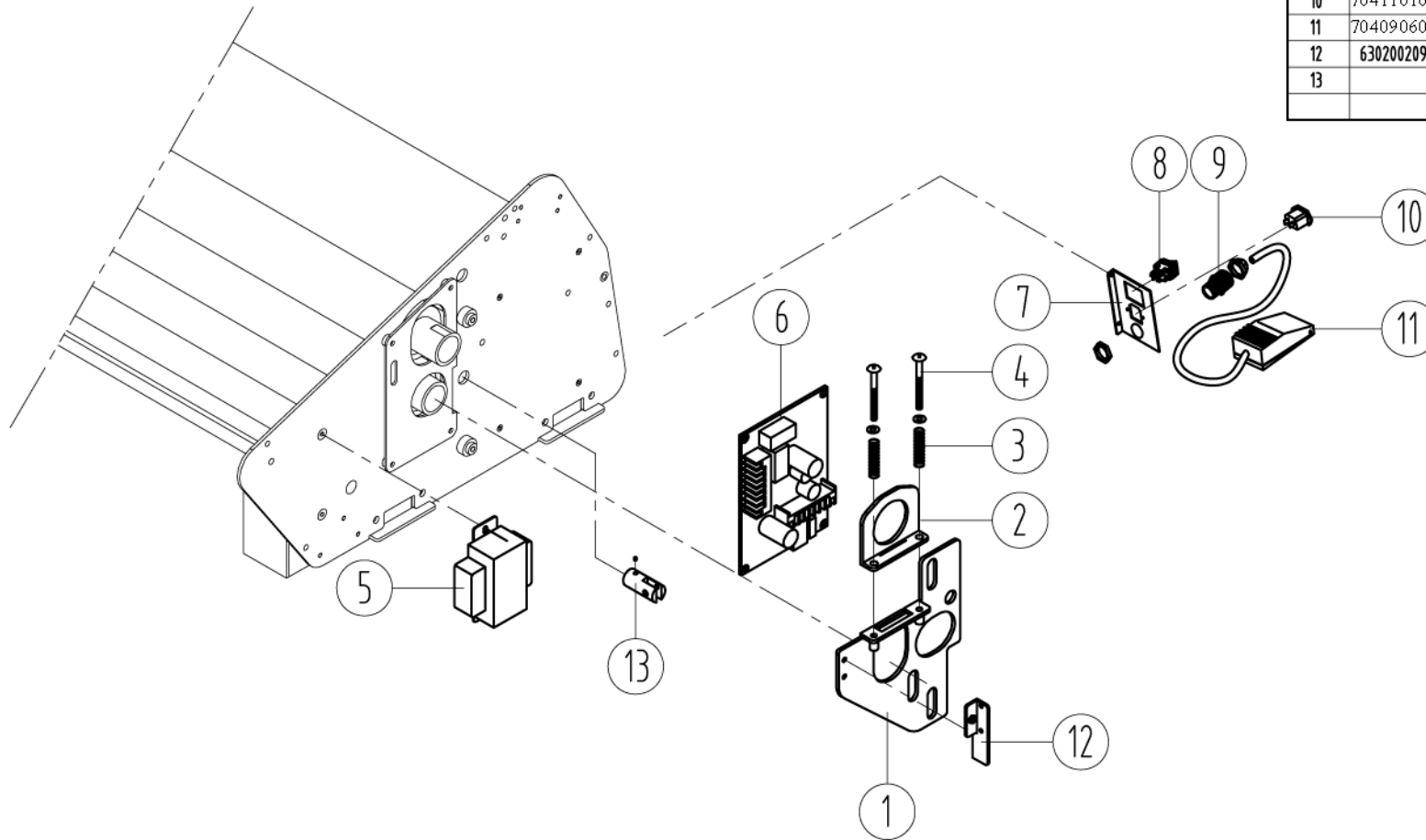


Item No.	Part No.	Part name	Spec	Quantity
1	630200201	O44C SIDE PLATE(L)	SPC3.0T 449.3x263.5(BK451)	1EA
2	630200202	O44C SIDE PLATE(R)	SPC3.0T 449.3x263.5(BK451)	1EA
3	630200204	O44C TABLE STAND	SPSR 100x50x280(BK451)	2EA
4	631800416	O44C ROLLER(SILICON)	F55x1210 / O44C-R0010	2EA
5	630200203	O44C BASE CONNECTOR	SPSR 20/40x1184(BK451)	2EA
6	632502856	O44C ECCENTRIC SHAFT	S45C F12x1257 / O44C-B0210	1EA
7	632502855	O44C ECCENTRIC CAM	S45C F30x16.5 / O44C-B0200	2EA
8	609020200	DC GEARED MOTOR(DM010)	DC 36V 11W	1EA
9	632501826	EX-P H/ROLLER BUSH(PL)	S45C F46xF39.9xF30x17	4EA
10	630200205	O44C ROLLER SUPPORT	SPC 2.0T 82x159(KB451)	2EA
11	630200212	O44C REAR TABLE	SPC2.0T 175x15x1160(BK451)	1EA
12	703010103	고무발 (HR/PHOTONEX)	SILICON (f28xf22x20)	4EA
13	632501594	FRONT TABLE SHAFT(PL)	S45C F10x1160	1EA
14	701020206	DRAWN CUP MIDDLE BEARING	HK3012	2EA
15	810400077	SPRING S RING	F30	2EA




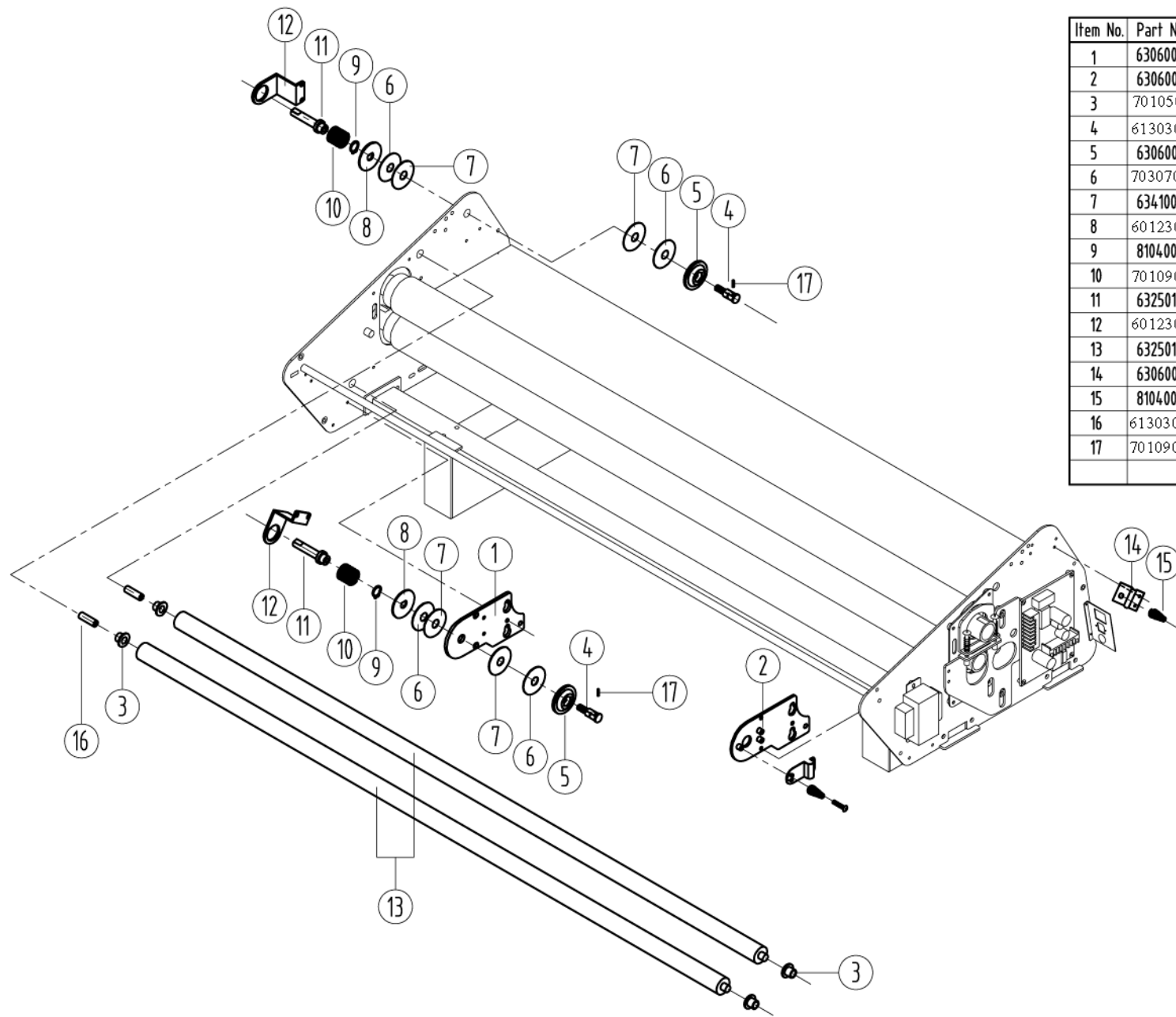
		Quantity	Designed	Checked	Approved	Scale	DATE	2006. 04. 24
		Material				Unit	MODEL	OEM 44C
		Sur/finish				Project	PART NAME	ASSEMBLY-1
		Tolerance					DRAWING No.	
		Chamfer					PART CODE	
	REVISION	DATE						

Item No.	Part No.	Part name	Spec	Quantity
1	630200207	O44C TENSION PLATE(R)	SPC 3.0T 141.5×170	1EA
2	630200210	O44C ROLLER HOOK	SPC 3.0T 65×57×15.5(BK451)	1EA
3	810400103	ROLLER SPRING	1.6T×32	2EA
4	810301384	M/S ROUND HEAD M4.0RH	M4.0×45RH WHT/(24mm)	2EA
5	610010211	TRANSFORMER GM6635A-12	120/36V/1.3A	1EA
6	638900387	ASS'Y PCB 44C MAIN PCB	AT14M REV1.0	1EA
7	601250154	PATRIOT 62C POWER PANEL	FE 1.5T 63.5×100×10.5(BK-451)	1EA
8	704090102	POWER S/W ROCKER	DPDT 250V16A(310B5NR)	1EA
9	704140406	CORD STOPPER	PG11	1EA
10	704110103	INLET SOCKET(FUSE HOLDER)	250V10A(0717)	1EA
11	704090603	FOOT SWITCH	HRF-MD1(220V10A)	1EA
12	630200209	PHOTO SENSOR BRACKET(R)	EGI 2.0T 60×26.5/044C-B0070	1EA
13				



- 5
- 4
- 3
- 2
- 1

Quantity	Designed	Checked	Approved	Scale	DATE	2006. 04.24
Material				Unit	MODEL	OEM 44C
Sur/finish				Project	PART NAME	ASSEMBLY-3
Tolerance					DRAWING No.	
Chamfer					PART CODE	
REVISION	DATE			 GMP CO., LTD		

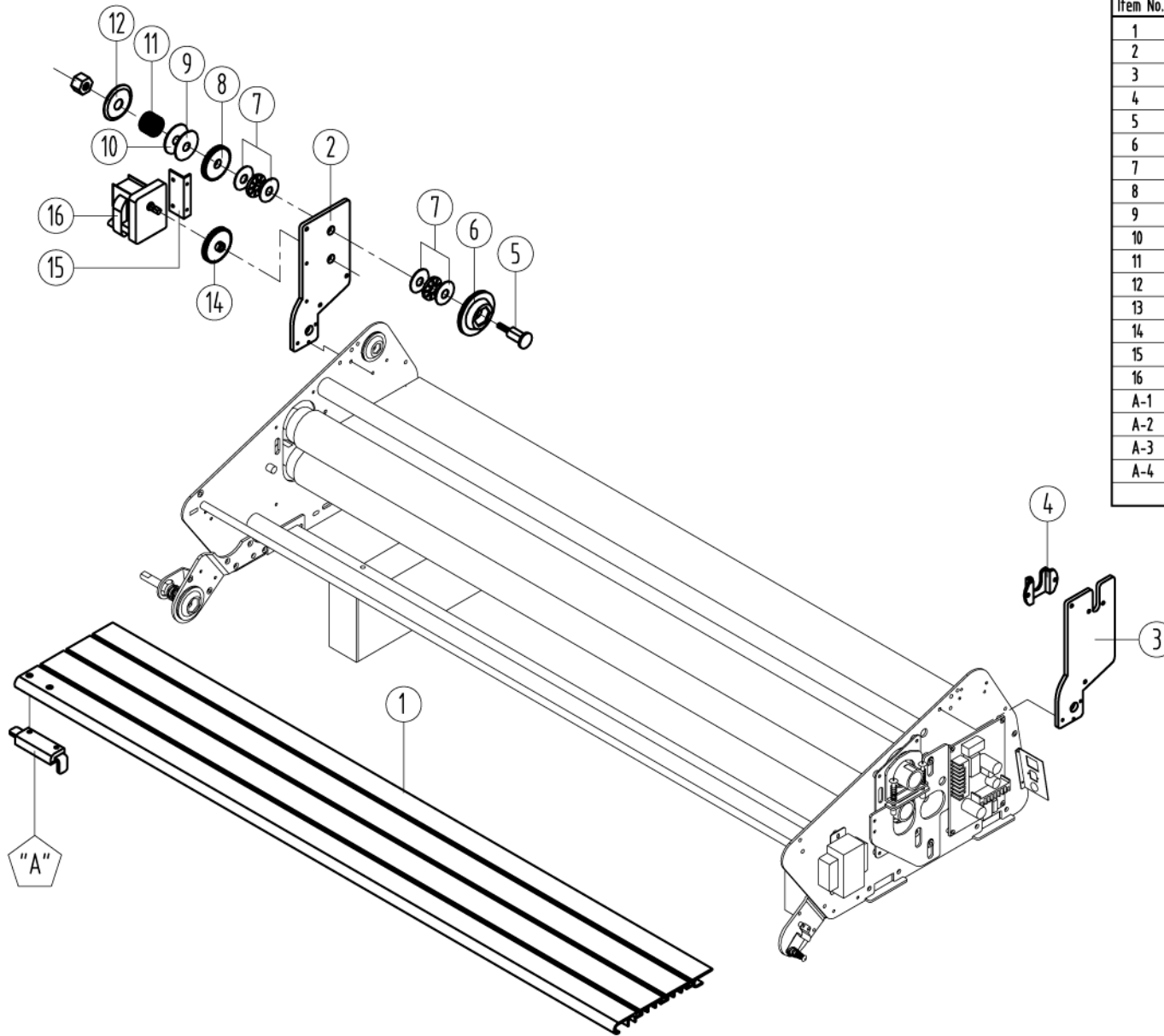


Item No.	Part No.	Part name	Spec	Quantity
1	630600610	44DT EXTENSION PLATE(L)	SPC4.0T 162.8x90.7(BK451)	1EA
2	630600611	44DT EXTENSION PLATE(R)	SPC4.0T 162.8x90.7(BK451)	1EA
3	701050234	DU BUSHING FLANGE	10x08	4EA
4	613030537	필름텐션볼트(PL)	45CxF13.5x30(EAGLE,ULTIMA)	2EA
5	630600087	OUTSIDE TENSION PLATE	FE 2.0T F44x8xM19(HB-BK451-X0)	2EA
6	703070101	F45 CLUTCH SKIN PAD(F12)	SKIN 2.0TxF12xF45	4EA
7	634100194	F12 CLUTCH PET PAD	PET 0.25TxF12xF45	4EA
8	601230702	EAGLE 내측텐션판	FE 2.0Txf44	2EA
9	810400065	SPRING S RING	12	2EA
10	701090141	ROLL 필름파이프스프링	3.5TxF26x24MM	2EA
11	632501702	EAGLE TENSION BLOCK(PL)	S45C F25xF15x74	2EA
12	601230708	EAGLE TENSION BLOCK STOPPER	FE 3.0Tx64.9x34xF20	2EA
13	632501595	EX-P1080 IDLE ROLLER(PL)	S45C F30x1165	2EA
14	630600163	EAGLE 필름샤우드지지판	SUS 0.5Tx24x51	2EA
15	810400150	압축코일스프링	0.8Tx35mm	2EA
16	613030540	GBC4265 보조기어지지핀(PL)	SM45C F10x27.5	2EA
17	701090832	SPRING PIN	2x15	2EA

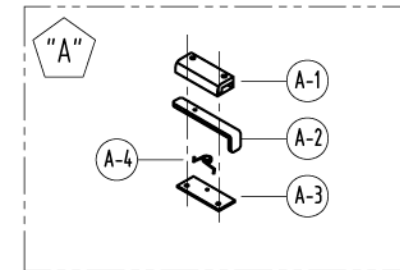
- ⑤
- ④
- ③
- ②
- ①

Quantity	Designed	Checked	Approved	Scale	DATE	2006. 04. 26
Material				Unit	MODEL	OEM 44C
Sur/finish				Project	PART NAME	ASSEMBLY-4
Tolerance					DRAWING No.	
Chamfer					PART CODE	
REVISION	DATE					

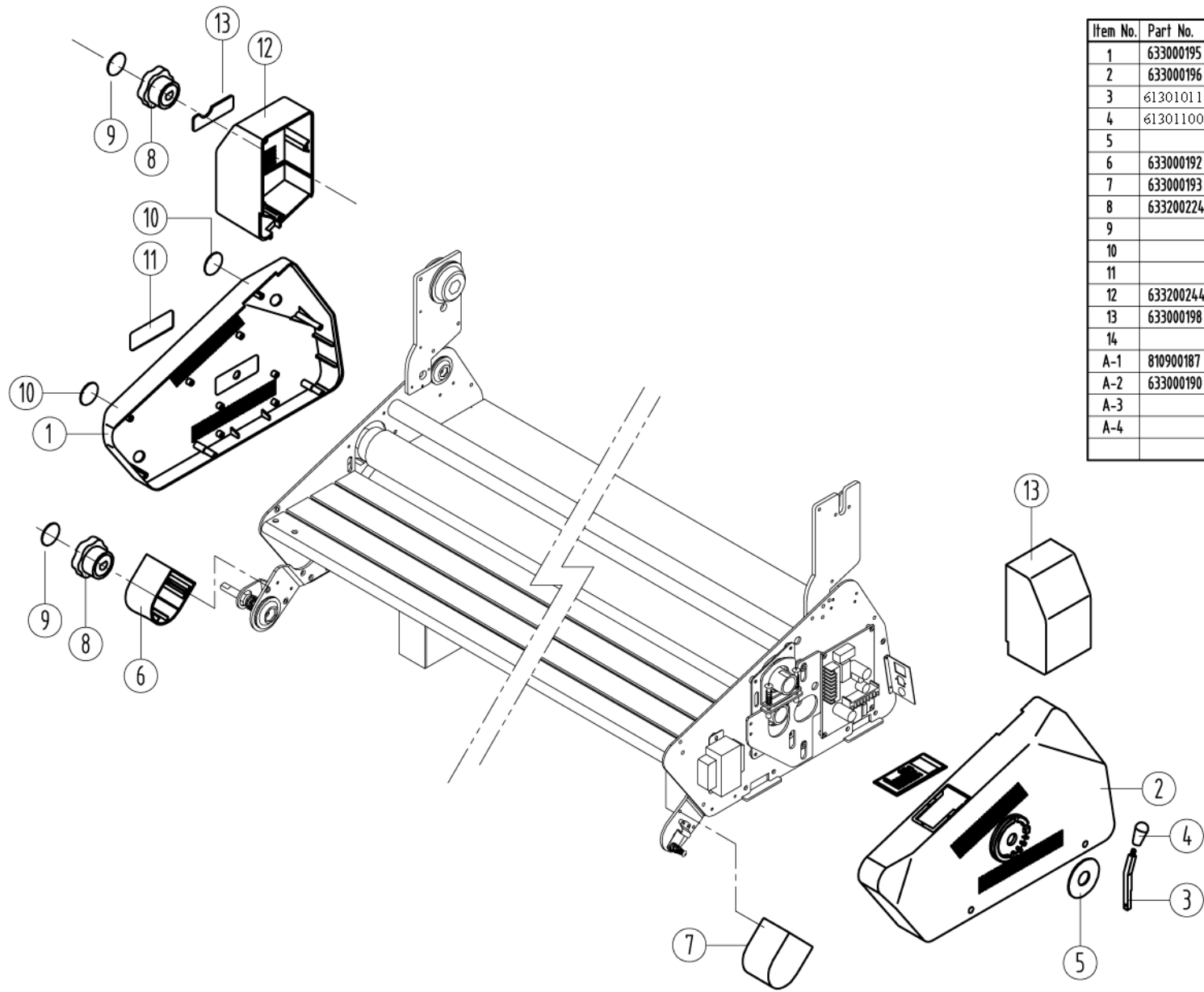




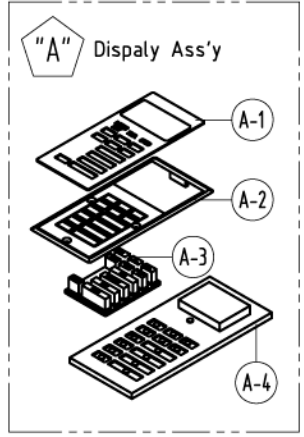
Item No.	Part No.	Part name	Spec	Quantity
1	633600710	44DT FRONT TABLE	AL 1158x172x16.4(GY124)	1EA
2	601250112	EXCELAM II REWINDER SUPPORT(L)	FE 4.5T 191.6x103.4(HB-BK451-X0)	1EA
3	601250113	EXCELAM II REWINDER SUPPORT(R)	FE 4.5T 191.6x103.4(HB-BK451-X0)	1EA
4	630200130	Q1120C FILM SUPPORT(15mm)	SPC 3.0Tx58.8x35x15	1EA
5	632501775	REWINDER TENSION BOLT(PL)	SM45C f13.5x50.7x25	1EA
6	601250114	OUTSIDE TENSION PLATE	FE 2.0T F44x8xM19(HB-BK451-X0)	1EA
7	701020205	THRUST NIDDLE ROLL BEARING ASS'Y	AXK1226+AS	2EA
8	635800528	O44C REWINDER CLUTHC GEAR	S45C 45T(M1)x6.0xF12	1EA
9				
10	630600157	EAGLE 내측롤션판	FE 2.0Txf44	1EA
11	701090142	EAGLE 필름파이스프링	3.5TxF26.5x17.5MM	1EA
12	601230834	EAGLE SPRING CAP	FE 1.0Txf26x4	1EA
13				
14	635800527	O44C REWINDER MOTOR GEAR	S45C 46T(M1)x11.5xF6	1EA
15	601230819	EAGLE DC 모터지지대	FE 2.0Tx56x30	1EA
16	609010302	AC GEARED ISG3220	GMPB(110/60) 1:220	1EA
A-1	604022109	EXCELAM II TABLE LEVER GUIDE	PC 49x19x8.7(920-70625)	1EA
A-2	601250178	EXCELAM II TABLE LEVER	SPC 3Tx140x70(PL)	1EA
A-3	601250179	TABLE LEVER BRACKET	SPC 2.0Tx49x19(PL)	1EA
A-4	701090169	LEVER SPRING(EXCELAM II)	0.6TxF4x7.7	1EA



5 4 3 2 1	Quantity		Designed	Checked	Approved	Scale	DATE	2006. 04. 24
	Material					Unit	MODEL	OEM 44C
	Sur/finish					Project	PART NAME	ASSEMBLY-5
	Tolerance						DRAWING No.	
	Chamfer						PART CODE	
REVISION	DATE		GMP CO., LTD					

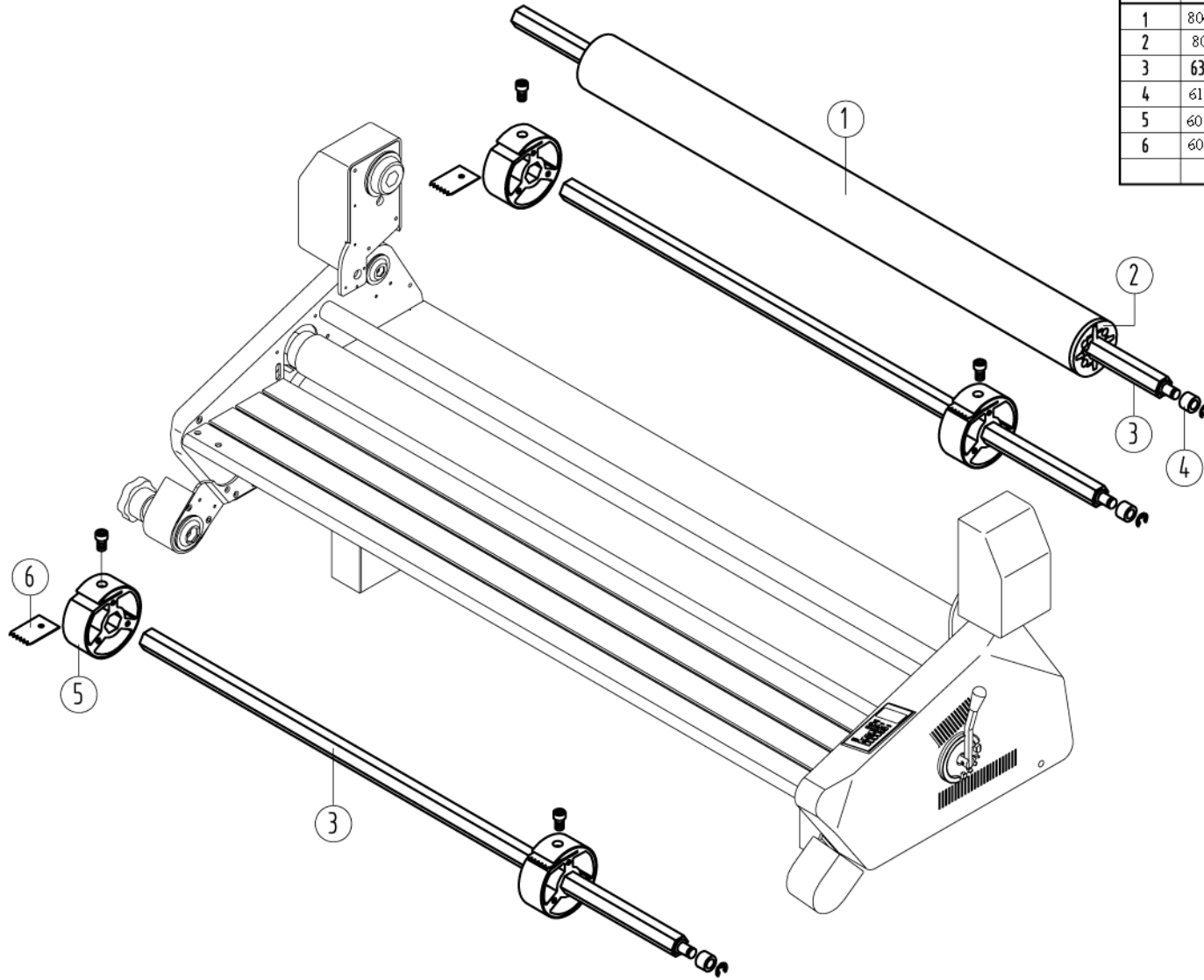


Item No.	Part No.	Part name	Spec	Quantity
1	633000195	44DT SIDE COVER(L)	ABS3.5T 471.2x276.6x75	1EA
2	633000196	44DT SIDE COVER(R)	ABS3.5T 471.2x276.6x75	1EA
3	613010113	SURE 편심레바(PL)	M10x117	1EA
4	613011005	ROLL 편심레바마개 (PL)	f20x40	1EA
5				
6	633000192	44DT EXTENSION COVER(L)	ABS2.5T 67.7x65.4x51(450-76274)	1EA
7	633000193	44DT EXTENSION COVER(R)	ABS2.5T 67.7x65.4x51(450-76274)	1EA
8	633200224	44DT TENSION KNOB	ABS F50xF15x30 (450-76274)	1EA
9				
10				
11				
12	633200244	O44C REWINDER COVER(L)	ABS3.0T 93x162(450-76274)	1EA
13	633000198	44DT REWINDER COVER(R)	ABS3.0T 93x162(450-76274)	1EA
14				
A-1	810900187	CONTROL PANEL STICKER / 27C	PC 0.4Tx50x114.5/CC27L040	1EA
A-2	633000190	27C CONTROL PANEL	ABS 58x122(450-76274)	1EA
A-3				
A-4				



5 4 3 2 1	Quantity	Designed	Checked	Approved	Scale	DATE	2006. 04. 26
	Material				Unit	MODEL	OEM 44C
	Sur/finish				Project	PART NAME	ASSEMBLY-6
	Tolerance					DRAWING No.	
	Chamfer					PART CODE	
REVISION	DATE						

Item No.	Part No.	Part name	Spec	Quantity
1	804020404	지관	F58x8Tx1000	1EA
2	8050112	지관 마무리 57MM	OFFICE-HR	2EA
3	632501849	44DT HEX FILM SHAFT(PL)	S45C HEX 19x1151/DT44H020	3EA
4	613030301	EAGLE 필름사후드부싱(PL)	f15.5xf10x11.0	3EA
5	601211111	3"CORE BUSH STOPPER PIN	STS0.8Tx4.0x12	4EA
6	604037033	3"BLACK CORE BUSHING	AL M19xT30xF75	4EA



5		Quantity		Designed	Checked	Approved	Scale	DATE	2006. 04. 24
4		Material					Unit	MODEL	OEM 44C
3		Sur/finish					Project	PART NAME	ASSEMBLY-7
2		Tolerance						DRAWING No.	
1		Chamfer						PART CODE	
		Round							
		REVISION							
		DATE							


GMP CO., LTD