



# 3064WFt Parts List



GBC IS AN ACCO BRANDS COMPANY

**GBC 3064WF**  
**PARTS MANUAL**  
REVISION-B DATED 3/1/06  
Do not duplicate without written permission.

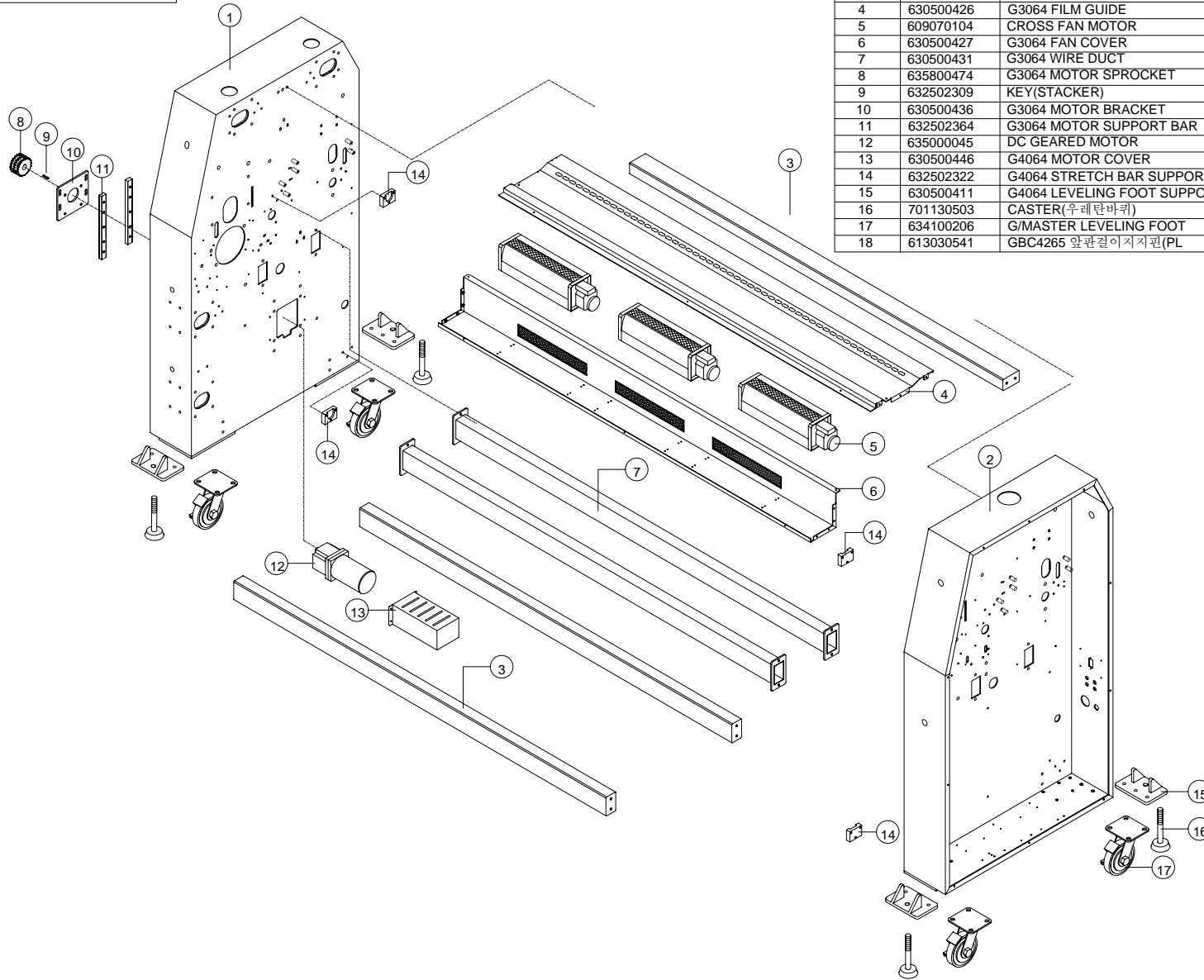


**PARTS MANUAL**  
**REVISION-B DATED 3/1/06**

**PROPRIETARY**

GBC PRO-TECH CLAIMS PROPRIETARY RIGHTS TO THE MATERIAL DISCLOSED ON THIS DRAWING. IT IS ISSUED IN CONFIDENCE FOR ENGINEERING INFORMATION ONLY AND SHALL NOT BE REPRODUCED, COPIED OR DISCLOSED IN WHOLE OR IN PART, OR USED FOR MANUFACTURE OR FOR ANY OTHER PURPOSE WITHOUT WRITTEN PERMISSION FROM GBC PRO-TECH

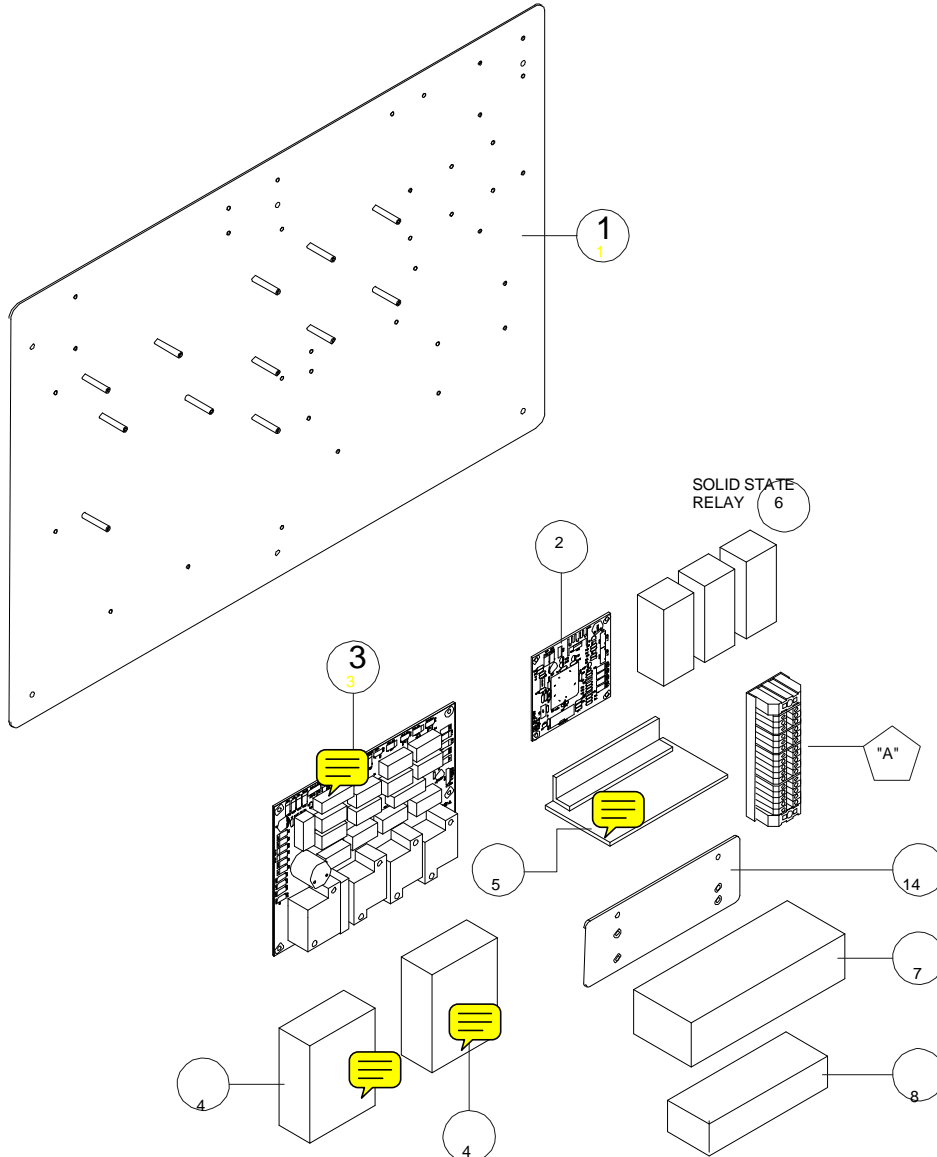
No.	Parts Code	Item	Spec	Quantity
1	630500422	G3064 SIDE CABIN(LEFT)	SPC3.2T 1303.5*770*190	1EA
2	630500423	G3064 SIDE CABIN(RIGHT)	SPC3.2T 1303.5*770*190	1EA
3	601410735	ORCA-64 CROSS BAR	SPCR 2.3T 1710*45*75	3EA
4	630500426	G3064 FILM GUIDE	SPC2.0T 288.3*1709.5	1EA
5	609070104	CROSS FAN MOTOR	PCF-6230GMP9-2(230/50)C.C.W	3EA
6	630500427	G3064 FAN COVER	2.0T 137.5*118*1709.5(GY0806)	2EA
7	630500431	G3064 WIRE DUCT	STKM5.0T 45*75*1710(GY0806)	2EA
8	635800474	G3064 MOTOR SPROCKET	RS35 20T*20T*35.3*F18	1EA
9	632502309	KEY(STACKER)	5*5*30	1EA
10	630500436	G3064 MOTOR BRACKET	SPC5.0T 140*100(GY0806)	1EA
11	632502364	G3064 MOTOR SUPPORT BAR	S45C 12*20*250	2EA
12	635000045	DC GEARED MOTOR	DC90V 300W	1EA
13	630500446	G4064 MOTOR COVER	SPC1.5T 180*140*360	1EA
14	632502322	G4064 STRETCH BAR SUPPORT BLOCK	Bs 54*40*15.5/4064H090	4EA
15	630500411	G4064 LEVELING FOOT SUPPORT	SPC10.0T 150*100(GY0806)	4EA
16	701130503	CASTER(우레탄바퀴)	4"/BRAKE	4EA
17	634100206	G/MASTER LEVELING FOOT	M16*180	4EA
18	613030541	GBC4265 앞판걸이 지지편(PL)	SM45C F10*20	12EA



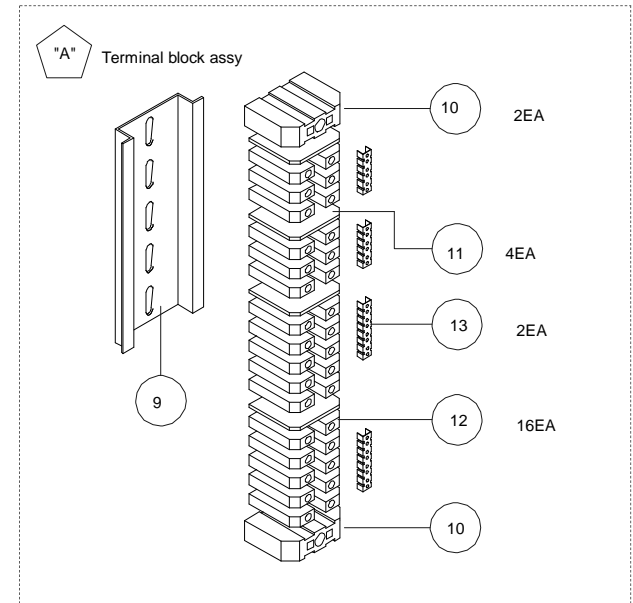
UNLESS OTHERWISE SPECIFIED TOLERANCE				GBC Films Group 4151 Anderson Road, DeForest, WI 53532	
DIM AS BROWN	TOL.	FINISH TO BE	TITLE :		
XX	±.164	125 ✓	Side Frame assembly		
X	±.650		DATE:	DRAWN BY:	DWG SCALE:
XX	±.910		10/09/05	NG	N/A
XXX	±.920	ANGLES ±.10°	DWG : 000-000		
XXXX	±.005				

**PROPRIETARY**

GBC PRO-TECH CLAIMS PROPRIETARY RIGHTS TO THE MATERIAL DISCLOSED ON THIS DRAWING. IT IS ISSUED IN CONFIDENCE FOR ENGINEERING INFORMATION ONLY AND SHALL NOT BE REPRODUCED, COPIED OR DISCLOSED IN WHOLE OR IN PART, OR USED FOR MANUFACTURE OR FOR ANY OTHER PURPOSE WITHOUT WRITTEN PERMISSION FROM GBC PRO-TECH



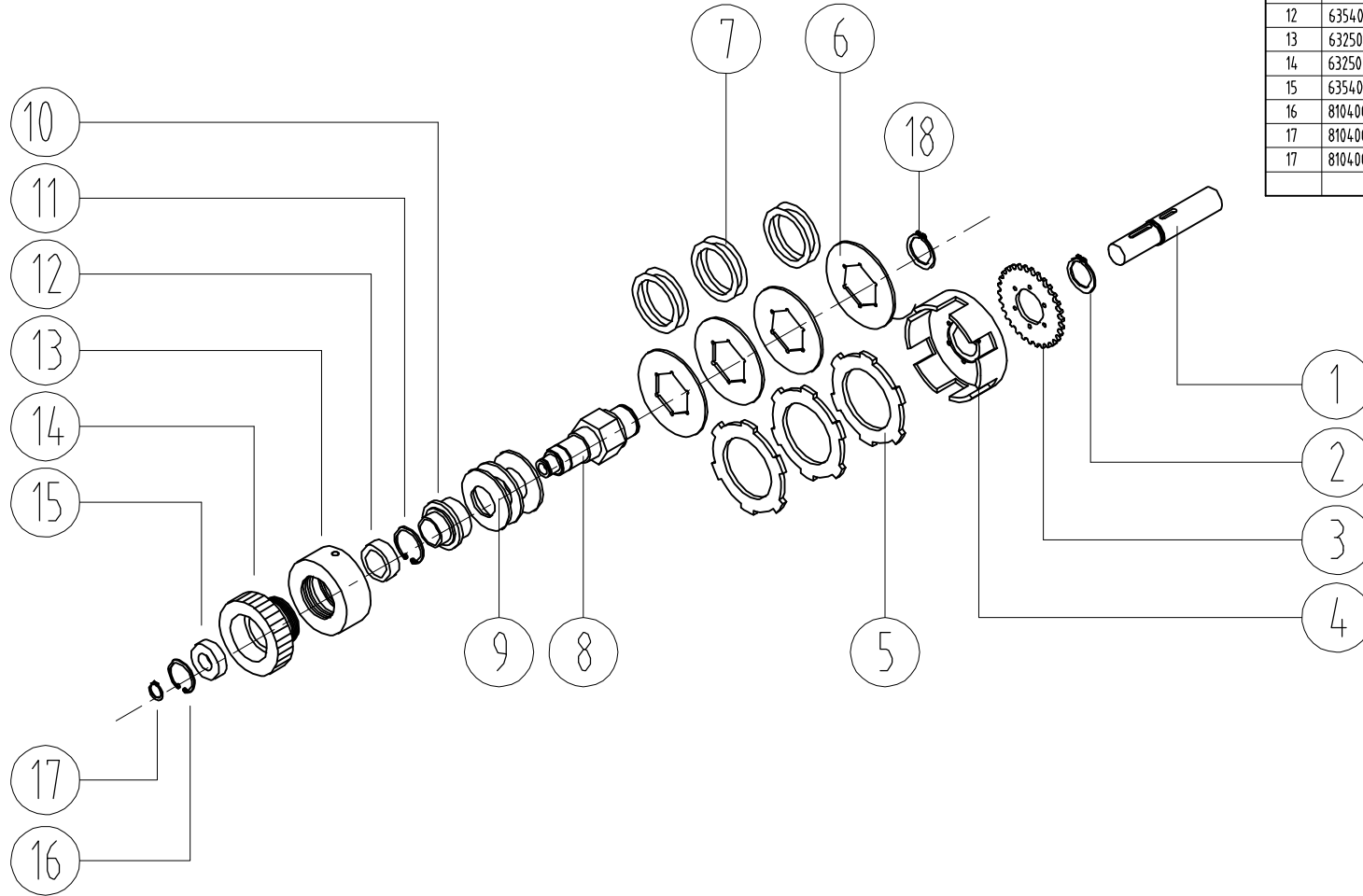
	PART CODE	PART NAME	SPEC.	Quantity
1	630500437	G3064 PCB PLATE	SPC2.0T 425*620(GY0806)/P130	1EA
2	638900363	PCB ASS'Y GBC3064 MAIN	G640M REV1.1	1EA
3	638900366	PCB ASS'Y GBC3064 RELAY	G64RB REV1.1	1EA
4	637400168	PICO GUARD FIBER OPTIC SYSTEM	SFCDT-4A1(SFCDT-4A1C)	2EA
5	220131	MOTOR DRIVE & POT(MINARIK)	MMXL05-D240VAC	1EA
6	705090302	SOLID STATE RELAY	GLS25	1EA
7	638900369	24V DC P.SUPPLY 100W(MEANWELL)	SP-100-24	1EA
8	638900361	12V DC P. SUPPLY 60W(MEANWELL)	S-60-12	1EA
9	637600072	TERMINAL BLOCK RAIL	NS 35/7.5	1EA
10	704051033	TERMINAL BLOCK STOPPER	E/NS 35 N (E-UK)	2EA
11	704051032	TERMINAL BLOCK END COVER	D-UK 4/10	4EA
12	704051031	TERMINAL BLOCK UK5N	T/B	16EA
13	704051036	TERMINAL BLOCK BRIDGE BAR	FB 10-6	2EA
14	630500450	G4064 POWER SUPPLY BRACKET	SPC2.0T 66*179 (GY08006)/P240	2EA



This price is the property of GBC Films Group. The information thereon is exempt in confidence.			
		<b>GBC Films Group</b>	
		4151 Anderson Road, DeForest, WI 53532	
		TITLE :	
		<b>Electrical Boards</b>	

GBC 3064WF  
CLUTCH ASS'Y

**CLUTCH ASSEMBLY INCLUDES ITEMS 2-17**  
**P/N# 639900148**



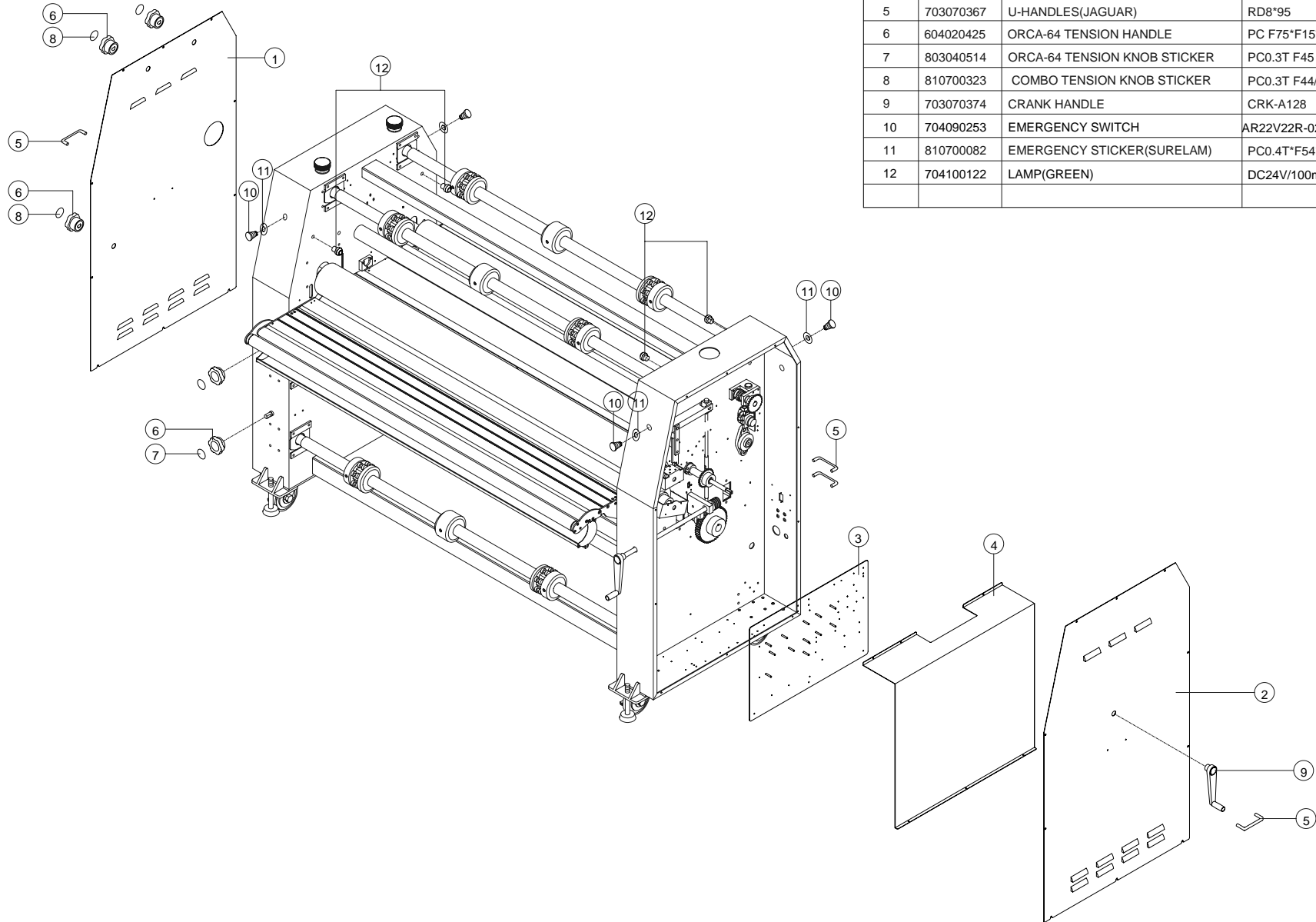
No.	Parts Code	Item	Spec	Quantity
1	632502314	G4064 CLUTCH ADAPTOR	S45C F28x150/4064H020	1EA
2	810400205	SPRING S RING	28	1EA
3	635800467	G4064 CLUTCH SPROCKET	RS35 30TxF41x4.3	1EA
4	632500414	FALCON CLUTCH BODY	AL6061 F113.5xF35x53.3	1EA
5	634100133	CLUTCH DISC PAD	F113.5xF72x5.5T	3EA
6	630500081	FALCON FRICTION DISC	SPC 3.0T F101x46.2	4EA
7	635400090	WAVE WASHER	F54xF69.8x0.45T	6EA
8	632500418	FALCON CLUTCH SHAFT	S45C 46x128	1EA
9	810400197	DISC SPRING	F46xF91x3.5T	3EA
10	632500417	FALCON CLUTCH SHAFT COVER	S45C F55.5x37	1EA
11	810400100	SPRING S(IN) RING	F62	1EA
12	635400027	BALL BEARING	#6007	1EA
13	632500416	FALCON CLUTCH PRESSURE	AL6061 F88xF42x50	1EA
14	632500415	FALCON CLUTCH HANDLE	AL6061 F88xF42x50	1EA
15	635400024	BALL BEARING	#6004ZZ	1EA
16	810400099	SPRING S(IN) RING	F42	1EA
17	810400071	SPRING S RING	20	1EA
17	810400078	SPRING S RING	45	1EA

날인되지 않은 도면은 무효

△	Quantity	Designed	Checked	Approved	Scale	1/1	DATE	2005. 09. 08
△	Material				Unit	mm	MODEL	3064WF
△	Sur/finish				Project	3	PART NAME	Clutch assembly
△	Tolerance	±0.1						
△	조립방법 변경	2006 03 08	Chamfer	C0.5			DRAWING No.	3064-E121
	REVISION	DATE	Round	R1.0			PART CODE	

**PROPRIETARY**

GBC PRO-TECH CLAIMS PROPRIETARY RIGHTS TO THE MATERIAL DISCLOSED ON THIS DRAWING. IT IS ISSUED IN CONFIDENCE FOR ENGINEERING INFORMATION ONLY AND SHALL NOT BE REPRODUCED, COPIED OR DISCLOSED IN WHOLE OR IN PART, OR USED FOR MANUFACTURE OR FOR ANY OTHER PURPOSE WITHOUT WRITTEN PERMISSION FROM GBC PRO-TECH



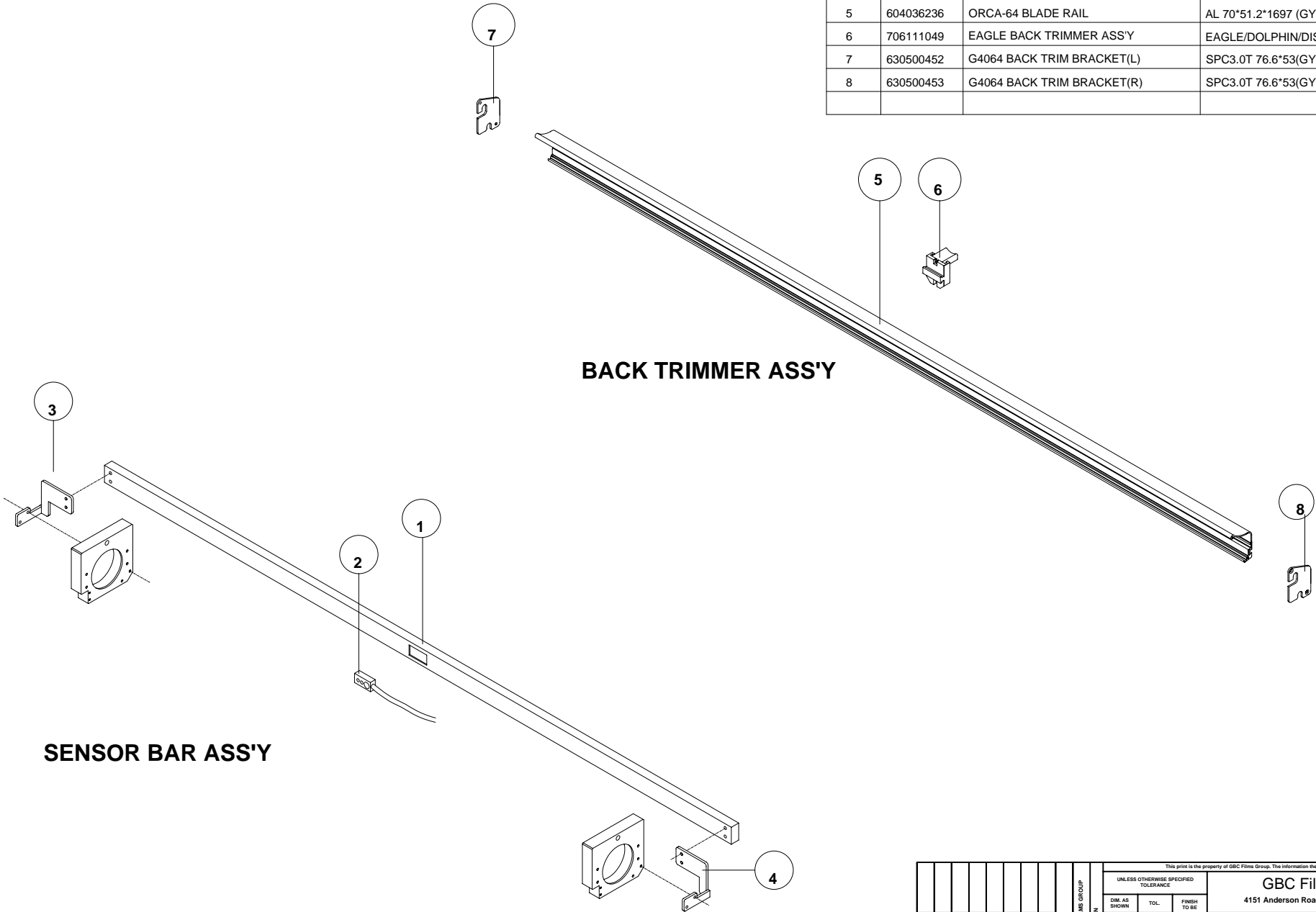
No.	Parts Code	Item	Spec	Quantity
1	630500424	G3064 SIDE COVER(LEFT)	SPC1.5T 1285.5*761	1EA
2	630500425	G3064 SIDE COVER(RIGHT)	SPC1.5T 1285.5*761	1EA
3	630500437	G3064 PCB PLATE	SPC2.0T 425*620(GY0806)	1EA
4	630500438	G3064 PCB PLATE COVER-A	AL1.5T 665*746*169.5	1EA
5	703070367	U-HANDLES(JAGUAR)	RD8*95	4EA
6	604020425	ORCA-64 TENSION HANDLE	PC F75*F15*30 (WHITE)	5EA
7	803040514	ORCA-64 TENSION KNOB STICKER	PC0.3T F45 (WHITE)	2EA
8	810700323	COMBO TENSION KNOB STICKER	PC0.3T F44/4064L910	3EA
9	703070374	CRANK HANDLE	CRK-A128	1EA
10	704090253	EMERGENCY SWITCH	AR22V22R-02R(ZB2-BS544)	4EA
11	810700082	EMERGENCY STICKER(SURELAM)	PC0.4T*F54*F28	4EA
12	704100122	LAMP(GREEN)	DC24V/100mA	4EA

This print is the property of GBC Films Group. The information thereon is reprinted in confidence.			
UNLESS OTHERWISE SPECIFIED TOLERANCE			<b>GBC Films Group</b> 4151 Anderson Road, DeForest, WI 53532  <b>Side Covers</b>
DIM. AS SHOWN	TOL.	FINISH TO BE	
XX	±.154	125 √	
X	±.050		
XX	±.015		
XXX	±.020		
XXXX	±.005	ANGLES ±.10	TITLE : DATE : 12-28-05 DRAWN BY : NG DWG SCALE : N/A DWG : 000-015

**PROPRIETARY**

GBC PRO-TECH CLAIMS PROPRIETARY RIGHTS TO THE MATERIAL DISCLOSED ON THIS DRAWING. IT IS ISSUED IN CONFIDENCE FOR ENGINEERING INFORMATION ONLY AND SHALL NOT BE REPRODUCED, COPIED OR DISCLOSED IN WHOLE OR IN PART, OR USED FOR MANUFACTURE OR FOR ANY OTHER PURPOSE WITHOUT WRITTEN PERMISSION FROM GBC PRO-TECH

No.	Parts Code	Item	Spec	Quantity
1	601410732	ORCA-64 THERMAL SENSOR BAR	SPSR 2.3T*1700*20*40	1EA
2	705200201	INFRARED SENSOR ASS'Y	TPML1-710	1EA
3	630500434	G3064 SENSOR BAR BRACKCET(L)	SPC5.0T 77*70(GY0806)	1EA
4	630500435	G3064 SENSOR BAR BRACKCET(R)	SPC5.0T 77*70(GY0806)	1EA
5	604036236	ORCA-64 BLADE RAIL	AL 70*51.2*1697 (GY0806)	1EA
6	706111049	EAGLE BACK TRIMMER ASS'Y	EAGLE/DOLPHIN/DISCOVERY	1EA
7	630500452	G4064 BACK TRIM BRACKET(L)	SPC3.0T 76.6*53(GY0806)	1EA
8	630500453	G4064 BACK TRIM BRACKET(R)	SPC3.0T 76.6*53(GY0806)	1EA



**BACK TRIMMER ASS'Y**

**SENSOR BAR ASS'Y**

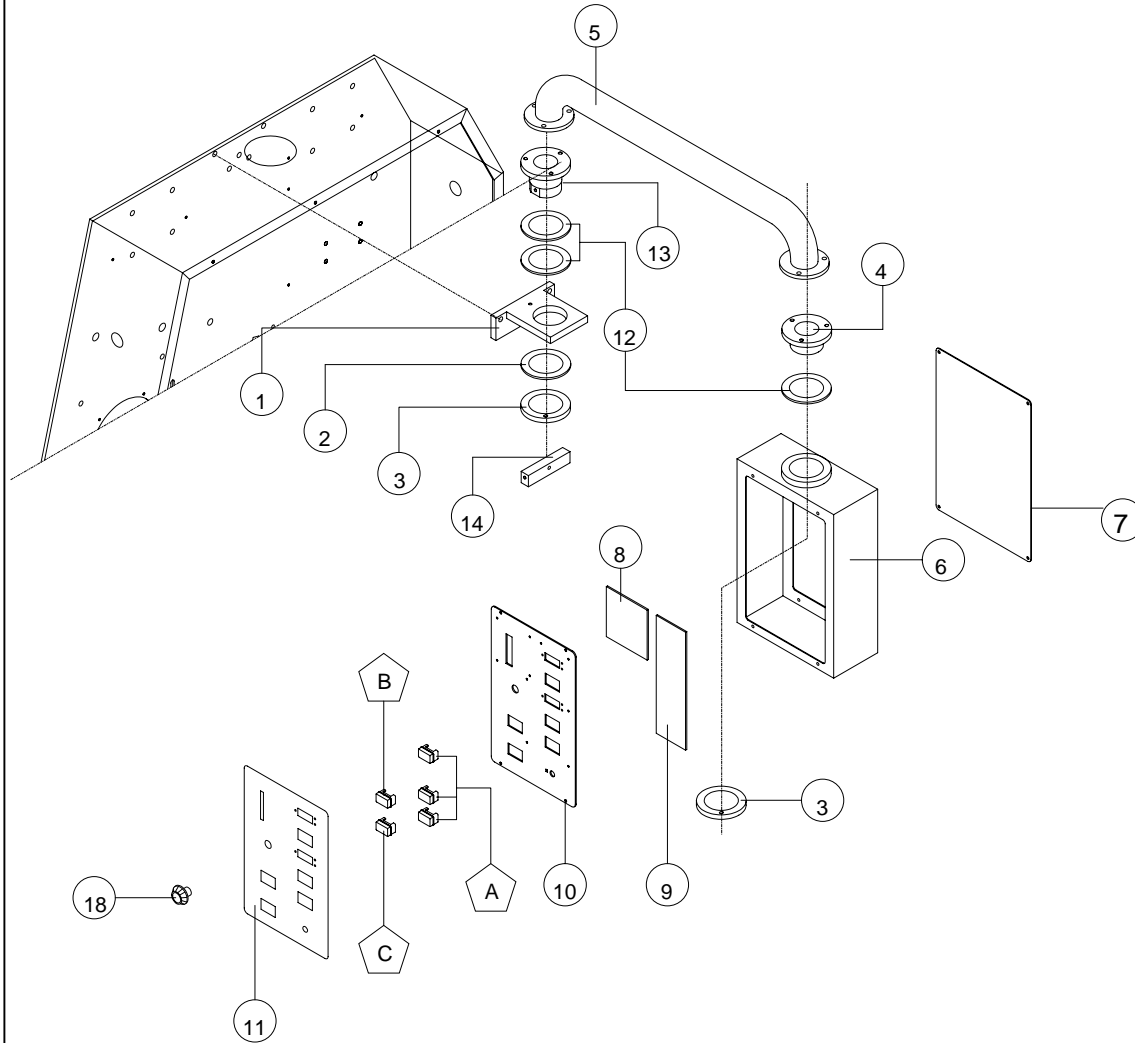
<small>This print is the property of GBC Films Group. The information thereon is limited in confidence.</small>			
		<b>GBC Films Group</b>	
		4151 Anderson Road, DeForest, WI 53532	
		<b>TITLE :</b> Trimmer and Sensor Assembly	
		DATE:	DRAWN BY:
		10/09/05	NG
		DWG SCALE:	DWG :
		N/A	000-014



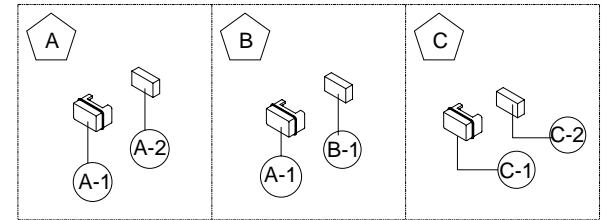
**PROPRIETARY**

GBC PRO-TECH CLAIMS PROPRIETARY RIGHTS TO THE MATERIAL DISCLOSED ON THIS DRAWING. IT IS ISSUED IN CONFIDENCE FOR ENGINEERING INFORMATION ONLY AND SHALL NOT BE REPRODUCED, COPIED OR DISCLOSED IN WHOLE OR IN PART, OR USED FOR MANUFACTURE OR FOR ANY OTHER PURPOSE WITHOUT WRITTEN PERMISSION FROM GBC PRO-TECH

# GBC 3064WF CONTROL BOX



	PART CODE	PART NAME	SPEC.	Quantity
1	632502385	G4064 CONTROL BOX CON. SUPPORT	S45C 40*120*100/4064-H150	1EA
2	701110713	THRUST NIDDLE WASHER	AS5070	1EA
3	632501627	G/MAX CONTROL PANEL RING	S45C F71*8*M48	2EA
4	632501626	G/MAX CONTROL PANEL BOSS	S45C F72*F35*M48	1EA
5	630500403	G4064 CONTROL BOX CONNECTOR	STPL4.9T F72*596(GY0806)	1EA
6	630500401	G4064 CONTROL BOX	SPC1.5T 90*198*290(GY0806)	1EA
7	630500402	G4064 CONTROL BOX COVER	SPC1.5T 194*286(GY0806)	1EA
8	638900365	PCB ASS'Y GBC3064 PRESSURE	G640PR REV2.0	1EA
9	638900362	PCB ASS'Y GBC3064 DISPLAY	G64OD REV2.1	1EA
10	630500441	G3064 CONTROL PANEL	SPC2.0T 172*275(GY0806)	1EA
11	810900190	G3064 CONTROL PANEL STICKER	PC0.8T 172*275/3064L011	1EA
12	701110412	WAVE WASHER	F54*F69.8*0.45T	3EA
13	632502327	G4064 CONTROL BOX CONNECTOR BOSS	S45C F72*F45*44.5	1EA
14	632502328	G4064 CONTROL BOX STOPPER	MC 15*10*104/4064H141	1EA
15	633300213	VOLUME KNOB	F30*F7	1EA
A-1	637400177	ROCKER SW COVER(BLACK)	AML54-F10KK	4EA
A-2	637400175	MAINTAINED SWITCH	AML24E-B-A-2-AA-01	3EA
B-1	637400176	MAINTAINED SWITCH	AML24E-B-A-2-CC-04	1EA
C-1	704200503	ROCKER SW COVER(RED/GREEN)	AML54-T10RG	1EA
C-2	704200505	MOMENTARY SW	AML24E-B-A-2-AA-05	1EA



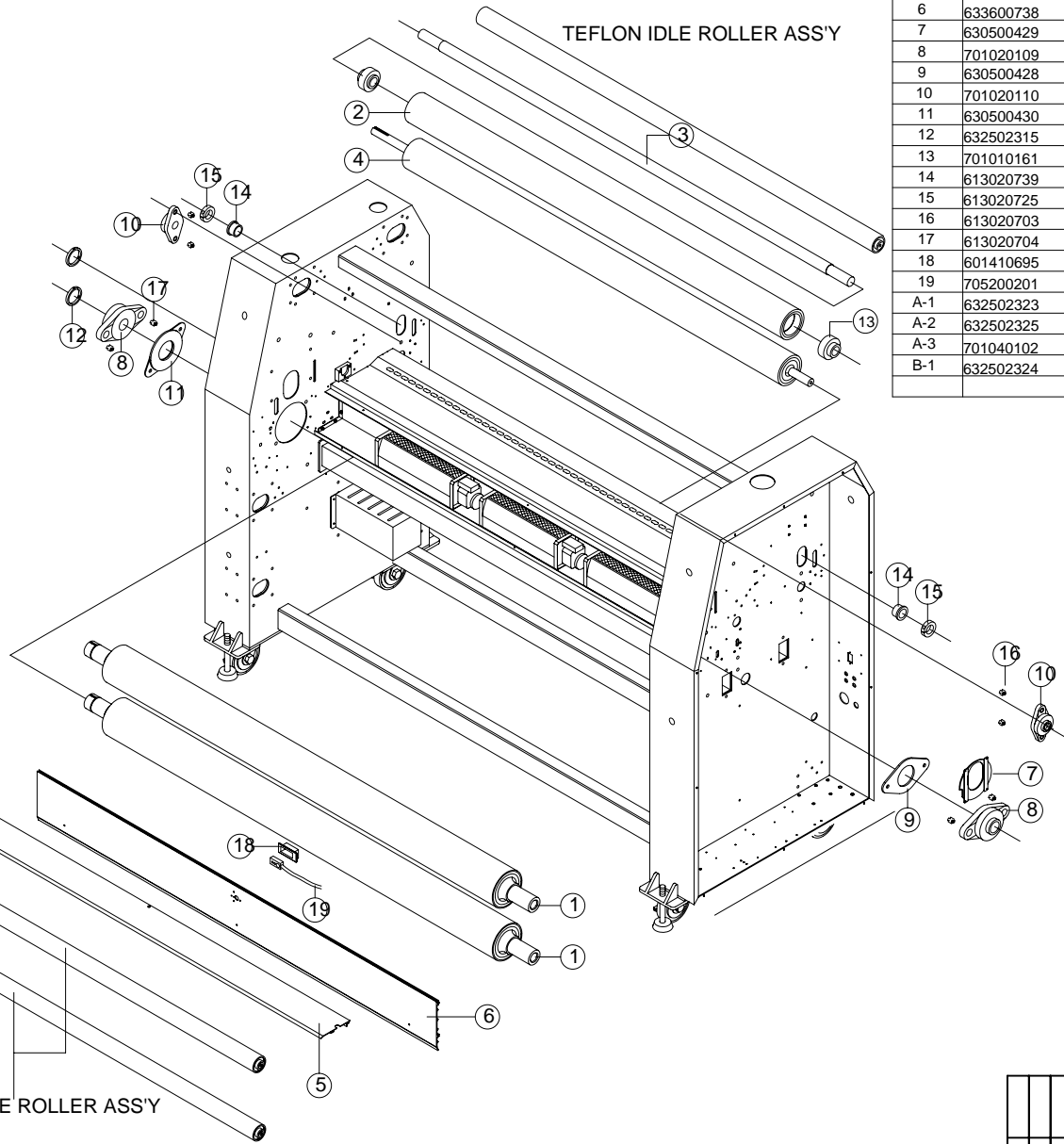
This print is the property of GBC Films Group. The information thereon is limited in confidence.																											
					<b>GBC Films Group</b> 4151 Anderson Road, DeForest, WI 53532																						
					<b>TITLE :</b> <b>Control Box Assembly</b>																						
DATE :		DRAWN BY :		DWG SCALE :		DWG :																					
10/09/05		NG		N/A		000-012																					
<table border="1" style="width: 100%; border-collapse: collapse;"> <thead> <tr> <th colspan="3">UNLESS OTHERWISE SPECIFIED TOLERANCE</th> </tr> <tr> <th>DIM. AS SHOWN</th> <th>TOL.</th> <th>FINISH TO BE</th> </tr> </thead> <tbody> <tr> <td>XX</td> <td>±.154</td> <td rowspan="4" style="text-align: center; vertical-align: middle;">12.5 √</td> </tr> <tr> <td>X</td> <td>±.050</td> </tr> <tr> <td>XX</td> <td>±.010</td> </tr> <tr> <td>XXX</td> <td>±.020</td> </tr> <tr> <td>XXXX</td> <td>±.005</td> <td>ANGLES ±.10</td> </tr> </tbody> </table>										UNLESS OTHERWISE SPECIFIED TOLERANCE			DIM. AS SHOWN	TOL.	FINISH TO BE	XX	±.154	12.5 √	X	±.050	XX	±.010	XXX	±.020	XXXX	±.005	ANGLES ±.10
UNLESS OTHERWISE SPECIFIED TOLERANCE																											
DIM. AS SHOWN	TOL.	FINISH TO BE																									
XX	±.154	12.5 √																									
X	±.050																										
XX	±.010																										
XXX	±.020																										
XXXX	±.005	ANGLES ±.10																									

**PROPRIETARY**

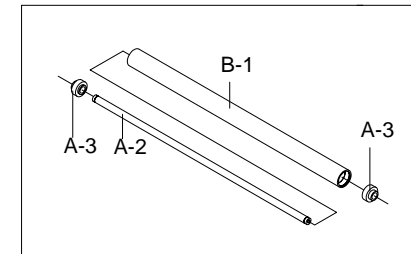
GBC PRO-TECH CLAIMS PROPRIETARY RIGHTS TO THE MATERIAL DISCLOSED ON THIS DRAWING. IT IS ISSUED IN CONFIDENCE FOR ENGINEERING INFORMATION ONLY AND SHALL NOT BE REPRODUCED, COPIED OR DISCLOSED IN WHOLE OR IN PART, OR USED FOR MANUFACTURE OR FOR ANY OTHER PURPOSE WITHOUT WRITTEN PERMISSION FROM GBC PRO-TECH

No.	Parts Code	Item	Spec	Qty
1	631800395	GBC4064 HEAT ROLLER	1902°F127*1670(601-45 RED)	2EA
2	631800397	G3064 PULL ROLLER(UPPER)	F101.6*1608(201-45 G)	1EA
3	632502350	G3064 PULL ROLLER SHAFT	S45C F35*1837.4*F30	1EA
4	631800396	G3064 PULL ROLLER(DRIVE)	1870°F101.6*1608(201-45 G)	1EA
5	633600739	G3064 GUIDE TABLE	AL6063 125.1*115*1705(GY0806)	1EA
6	633600738	G3064 FRONT COVER	AL6063 182.4*1709.5(GY0806)	1EA
7	630500429	G3064 ROLLER HOLE COVER(R)	SPC3.2T F134*122(GY0806)	1EA
8	701020109	UNIT BEARING	UCFL 210	2EA
9	630500428	G3064 BEARING SPACER	SPC5.0T 199*117(GY0806)	1EA
10	701020110	UNIT BEARING	UCFL 205	2EA
11	630500430	G3064 ROLLER HOLE COVER(L)	SPC3.2T F134*199(GY0806)	1EA
12	632502315	G4064 ROLLER SPACER	S45C F60*F50.1*7.5/4064H030	2EA
13	701010161	BALL BEARING	UR 207	2EA
14	613020739	FALCON PULL ROLLER BUSH	Bs F45*F30*25	2EA
15	613020725	FALCON LOCK COLLAR	S45C F50*F30*12.5	2EA
16	613020703	BEARING SPACER(PULL ROLLER)	Bs F15.9*F10*14.5	4EA
17	613020704	BEARING SPACER(HEAT ROLLER)	Bs F18.9*F10*15.5	4EA
18	601410695	FALCON SENSOR COVER	SPC 0.5T 60.5*45*25	1EA
19	705200201	INFRARED SENSOR ASSY	TPML1-710	1EA
A-1	632502323	G4064 IDLE ROLLER(PL)	STKM5.0T F55*1695.5	2EA
A-2	632502325	G4064 IDLE ROLLER SUPPORT BAR(PL)	S45C F20*1710/4064H111	2EA
A-3	701040102	UNIT BEARING	UR204	6EA
B-1	632502324	G4064 IDLE ROLLER (TEFLON)	STKM5.0T F55*1695.5	1EA

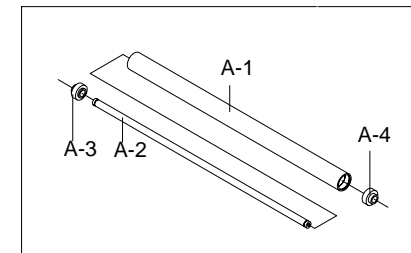
**TEFLON IDLE ROLLER ASS'Y**



**TEFLON IDLE ROLLER ASS'Y**



**IDLE ROLLER ASS'Y**

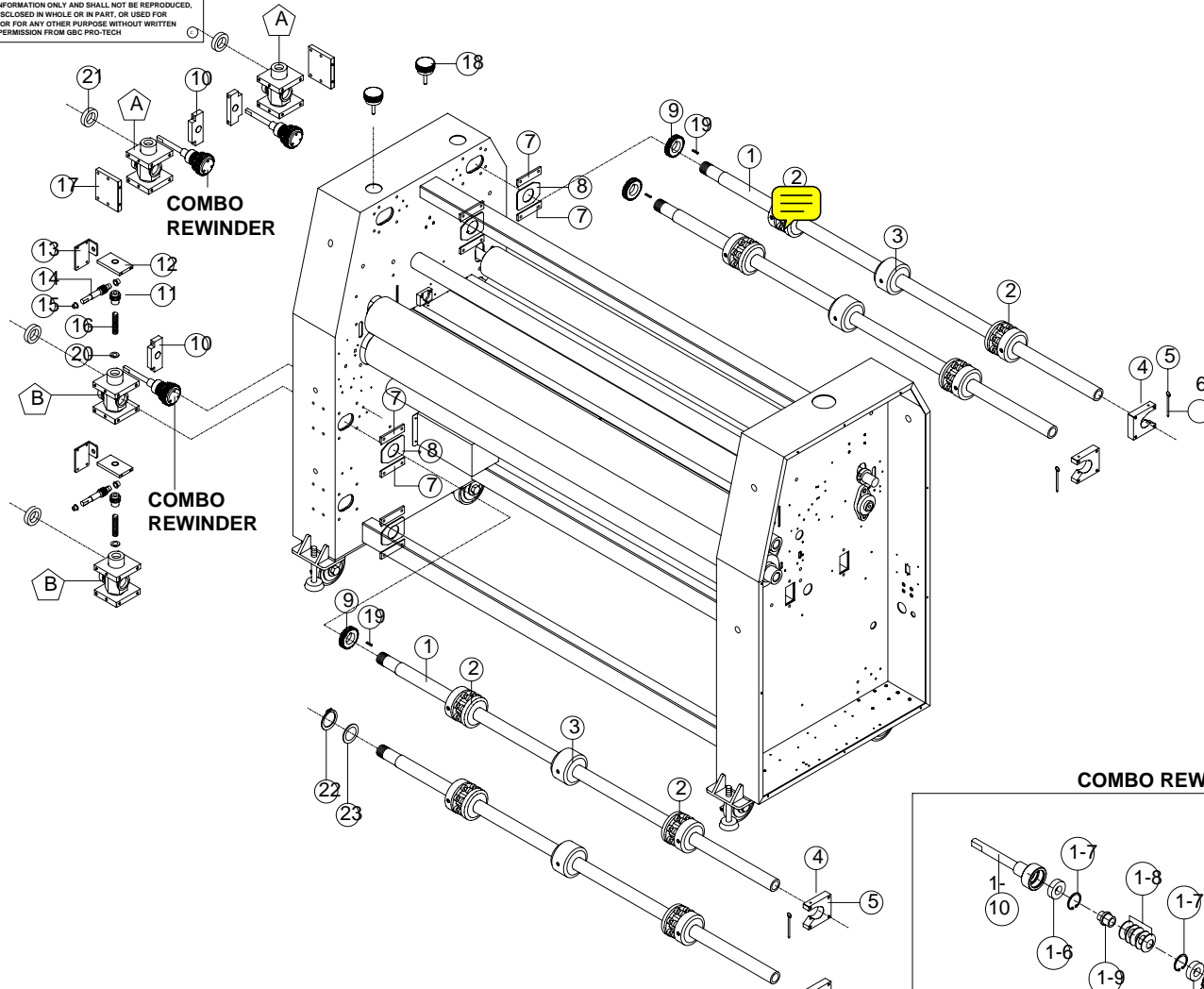


**IDLE ROLLER ASS'Y**

UNLESS OTHERWISE SPECIFIED TOLERANCE										GBC Films Group 4151 Anderson Road, DeForest, WI 53532	
DIM. AS SHOWN										TITLE :	
XX ±.164										Roller Assembly	
X ±.050										DATE: 10/09/05	
XX ±.010										DRAWN BY: NG	
XXX ±.020										DWG SCALE: N/A	
XXXX ±.005										DWG NO: 000-011	

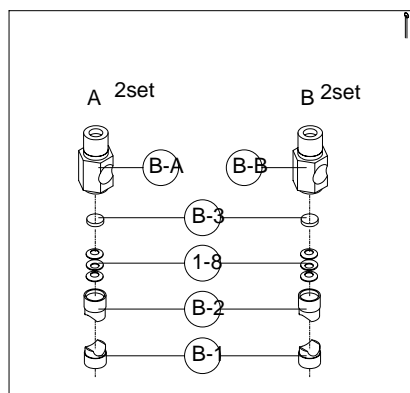
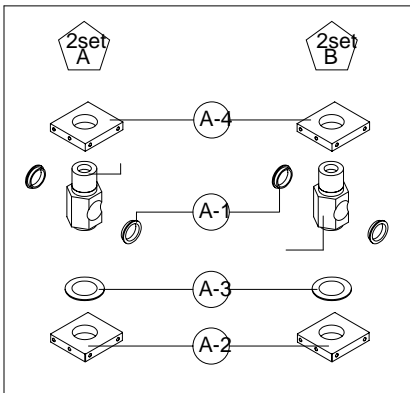
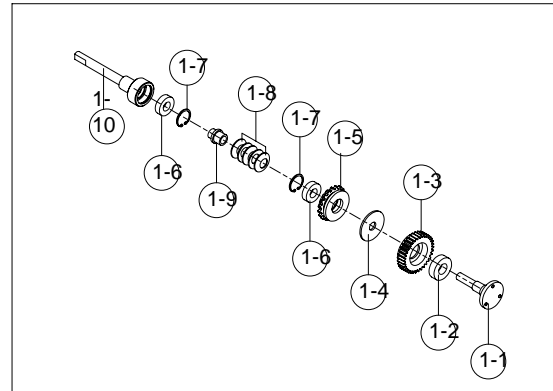
**PROPRIETARY**

GBC PRO-TECH CLAIMS PROPRIETARY RIGHTS TO THE MATERIAL DISCLOSED ON THIS DRAWING. IT IS ISSUED IN CONFIDENCE FOR ENGINEERING INFORMATION ONLY AND SHALL NOT BE REPRODUCED, COPIED OR DISCLOSED IN WHOLE OR IN PART, OR USED FOR MANUFACTURE OR FOR ANY OTHER PURPOSE WITHOUT WRITTEN PERMISSION FROM GBC PRO-TECH



No.	Parts Code	Item	Spec	Quantity
1	632502337	G4064 FILM PIPE (PL)	STKM6.3T F42.5*1820	4EA
2	639900132	AUTO GRIP CHUCK ASS'Y	FALCON/ORCA	8EA
3	613020714	FALCON FILM CORE	AL6061 F75.7*F42.7*50	4EA
4	632502349	FALCON SADDLE	MC(BLACK) 100*90*25	4EA
5	632501397	SAFETY PIN RING	F21.5	4EA
6	613020768	STOPPER PIN	S45C F6*95	4EA
7	632502346	FILM PIPE HOLE COVER RAIL	AL6061 104*26*6.5/.	8EA
8	630500419	G4064 FILM PIPE HOLE COVER	ACRYL3.0T 100*75	4EA
9	635800471	G4064 FILM PIPE SPUR GEAR	S45C M2*34T*F42.5*15	3EA
10	632502388	COMBO RW. SHAFT STOPPER	AL6061 49.5*115*17	3EA
11	635800330	WORM WHEEL UPPER	45COD34*F24*371912*6	2EA
12	632502348	WORM GEAR SUPPORT(R)	AL6061100*6013/H1011	2EA
13	630500420	WORM GEAR BRACKET(R)	SPCS.0T 65*89*39.5(Cr)	2EA
14	635800470	G4064 WORM SHAFT	M2 F25*F17*F15*123	2EA
15	701050243	DU BUSHING FLANGE	15*10	4EA
16	635800328	TENSION SCREW UPPER	SM45C F16*75(Tr16*4	2EA
17	632502340	FILM PIPE BLOCK SUPPORT	AL6061 100*116*15	2EA
18	634100390	GRILL KNOB(GBC4064)	GKB10-30mm	2EA
19	632502386	KEY	6*6*12 (전환키)	3EA
20	635400092	THRUST NIDDLE WASHER	AS1730	2EA
21	613020715	FALCON FILM PIPE COLLER	A45C F60*15	4EA
22	701090723	SPRING S RING	F38	1EA
23	701110715	THRUST NIDDLE WASHER	AS4064	1EA
1-1	632502341	COMBO REWINDER SHAFT	S45C F50*F13*81	3EA
1-2	701010135	BALL BEARING	#6004ZZ	3EA
1-3	635800472	REWINDER CLUTCH GEAR	S45C M2*34T*F42*20	3EA
1-4	634100391	F55 CLUTCH PAD(GBC4064)	NON . 3.0T*F17.2*F55	3EA
1-5	635800473	G4064 RW. CLUTCH SPROCKET	RS35 19T*F56*F26*22	3EA
1-6	701010117	BALL BEARING	# 6003	6EA
1-7	810400243	SPRING S (IN) RING	F35	6EA
1-8	701090511	FLAT TENSION SPRING	F20	27EA
1-9	632502342	COMBO RW. TENSION RING	25*28.5*F14/4064H96	3EA
1-10	632502343	COMBO RW. TENSION SHAFT	S45C F45*162*M24	3EA
A-1	613020717	FALCON FILM SHAFT BUSH	MC(BLACK) F50.5*9.5	8EA
A-2	632502339	G4064 FILM PIPE BLOCK (LOW)	AL6061 100*108*19	4EA
A-3	701110717	THRUST NIDDLE WASHER	AS5578	4EA
A-4	632502338	G4064 FILM PIPE BLOCK (UP)	AL6061 100*108*19*F51	4EA
B-A	613020716	FILM SHAFT BRAKE BLOCK	S45C 60*137.5	2EA
B-B	632501514	FILM SHAFT BRAKE BLOCK	SM45C67.F17*136.5	2EA
B-1	613020705	FALCON BREAK BLOCK(LOW)	MC(BLUE) F45*82/	4EA
B-2	613020706	FALCON BREAK BLOCK(UP)	FA60H051	4EA
B-3	613020755	FALCON TENSION WASHER	S45C F35*7.5	4EA

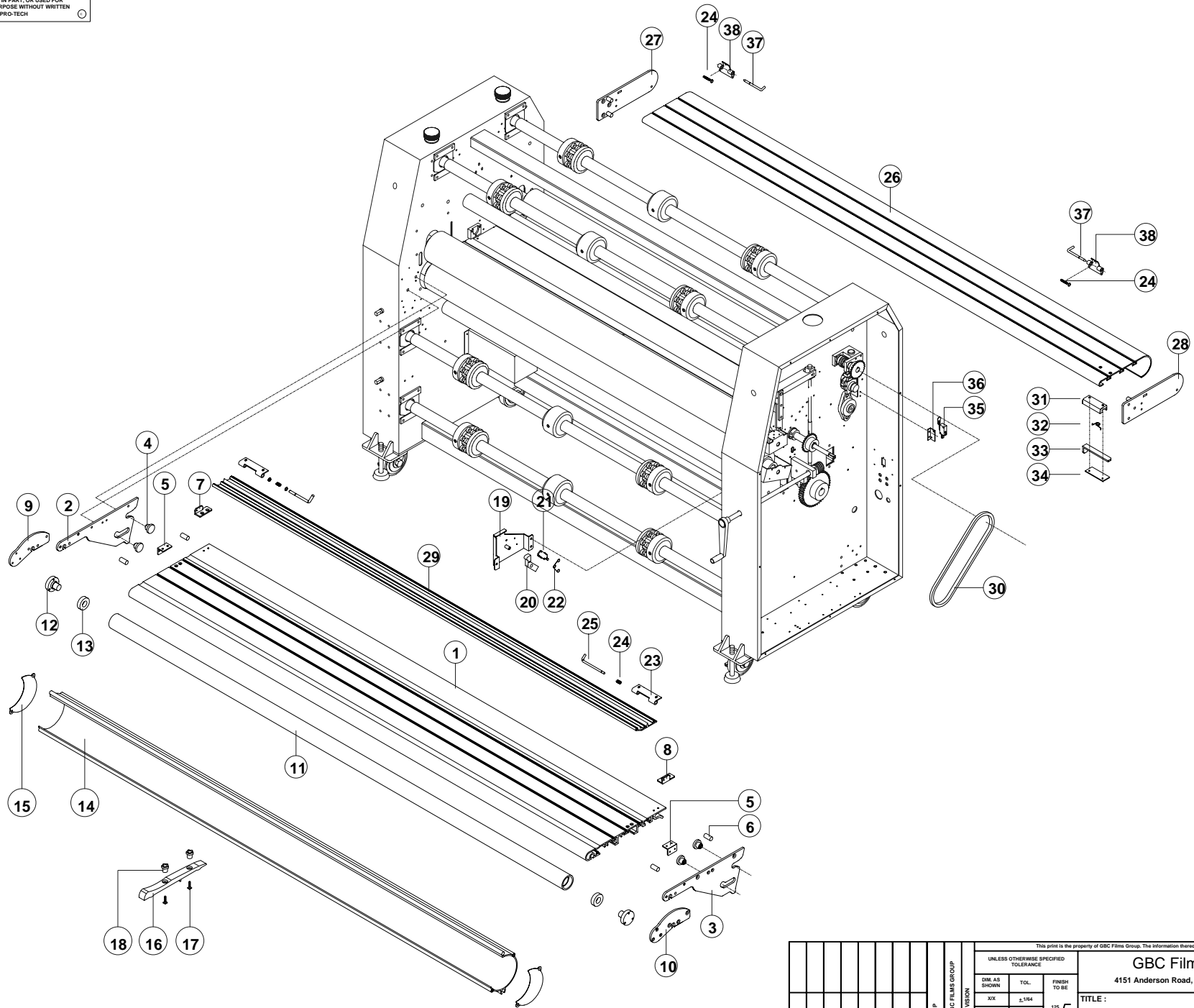
**COMBO REWINDER - 3SET**



UNLESS OTHERWISE SPECIFIED TOLERANCE				GBC Films Group 4151 Anderson Road, DeForest, WI 53532			
DWG AS SHOWN	TOL.	FINISH TO BE	TITLE : Brake-Unwind/Rewind Assembly				
XX	±.154	125	DATE :	DRAWN BY :	DWG SCALE :	DWG :	
X	±.050	√	10/09/05	NG	N/A	000-010	
XX	±.010						
XXX	±.020	ANGLES ±.1D					
XXXX	±.005						

**PROPRIETARY**

GBC PRO-TECH CLAIMS PROPRIETARY RIGHTS TO THE MATERIAL DISCLOSED ON THIS DRAWING. IT IS ISSUED IN CONFIDENCE FOR ENGINEERING INFORMATION ONLY AND SHALL NOT BE REPRODUCED, COPIED OR DISCLOSED IN WHOLE OR IN PART, OR USED FOR MANUFACTURE OR FOR ANY OTHER PURPOSE WITHOUT WRITTEN PERMISSION FROM GBC PRO-TECH



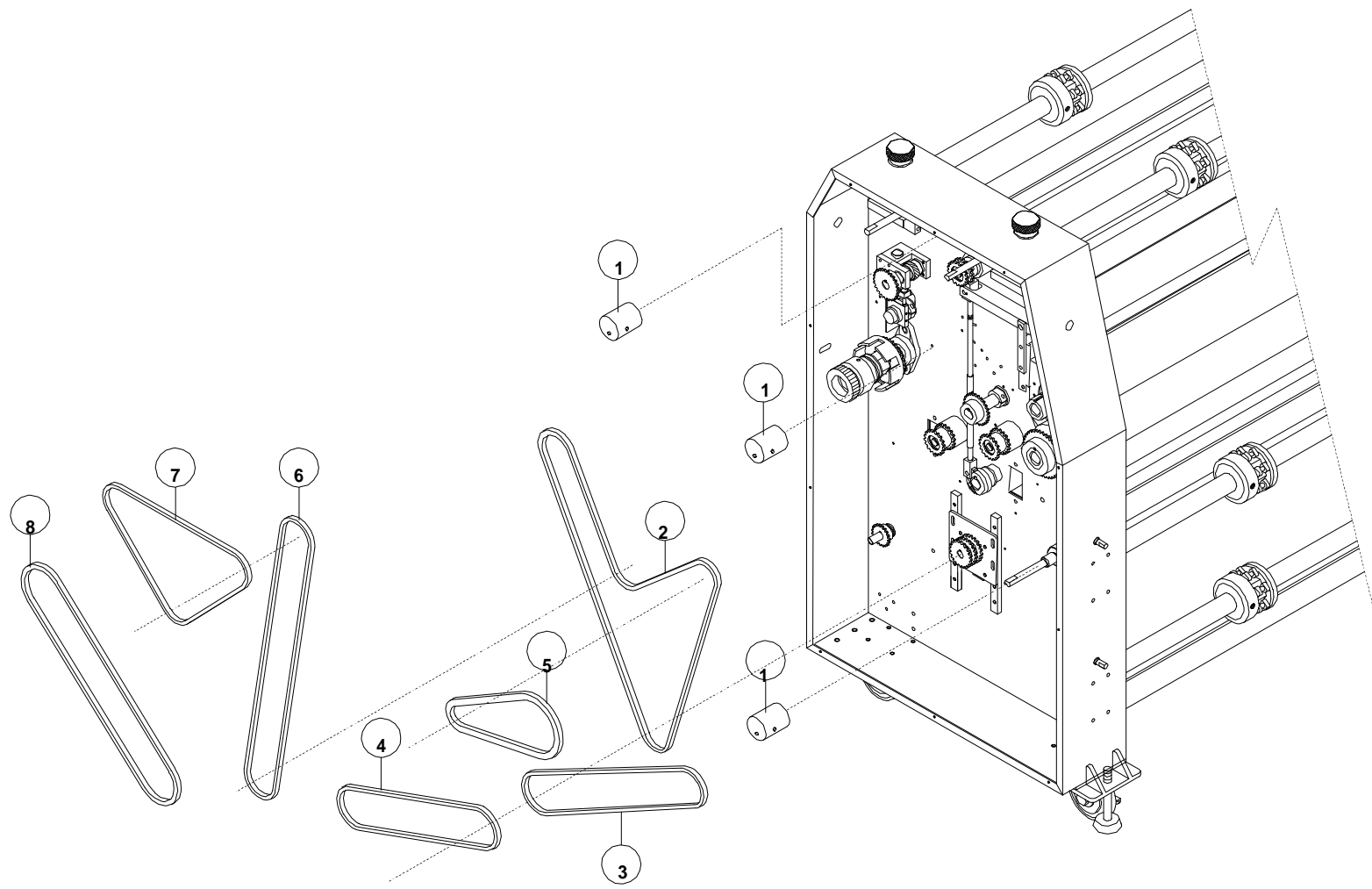
This print is the property of GBC Films Group. The information thereon is rendered in confidence.			
GBC Films Group 4151 Anderson Road, DeForest, WI 53532			TITLE :
Table Assembly			DATE :
10/09/05			DRAWN BY :
NG			DWG SCALE :
N/A			DWG :
000-008			



**PROPRIETARY**

GBC PRO-TECH CLAIMS PROPRIETARY RIGHTS TO THE MATERIAL  
 DISCLOSED ON THIS DRAWING. IT IS ISSUED IN CONFIDENCE.  
 FOR ENGINEERING INFORMATION ONLY AND SHALL NOT BE REPRODUCED,  
 COPIED OR DISCLOSED IN WHOLE OR IN PART, OR USED FOR  
 MANUFACTURE OR FOR ANY OTHER PURPOSE WITHOUT WRITTEN  
 PERMISSION FROM GBC PRO-TECH

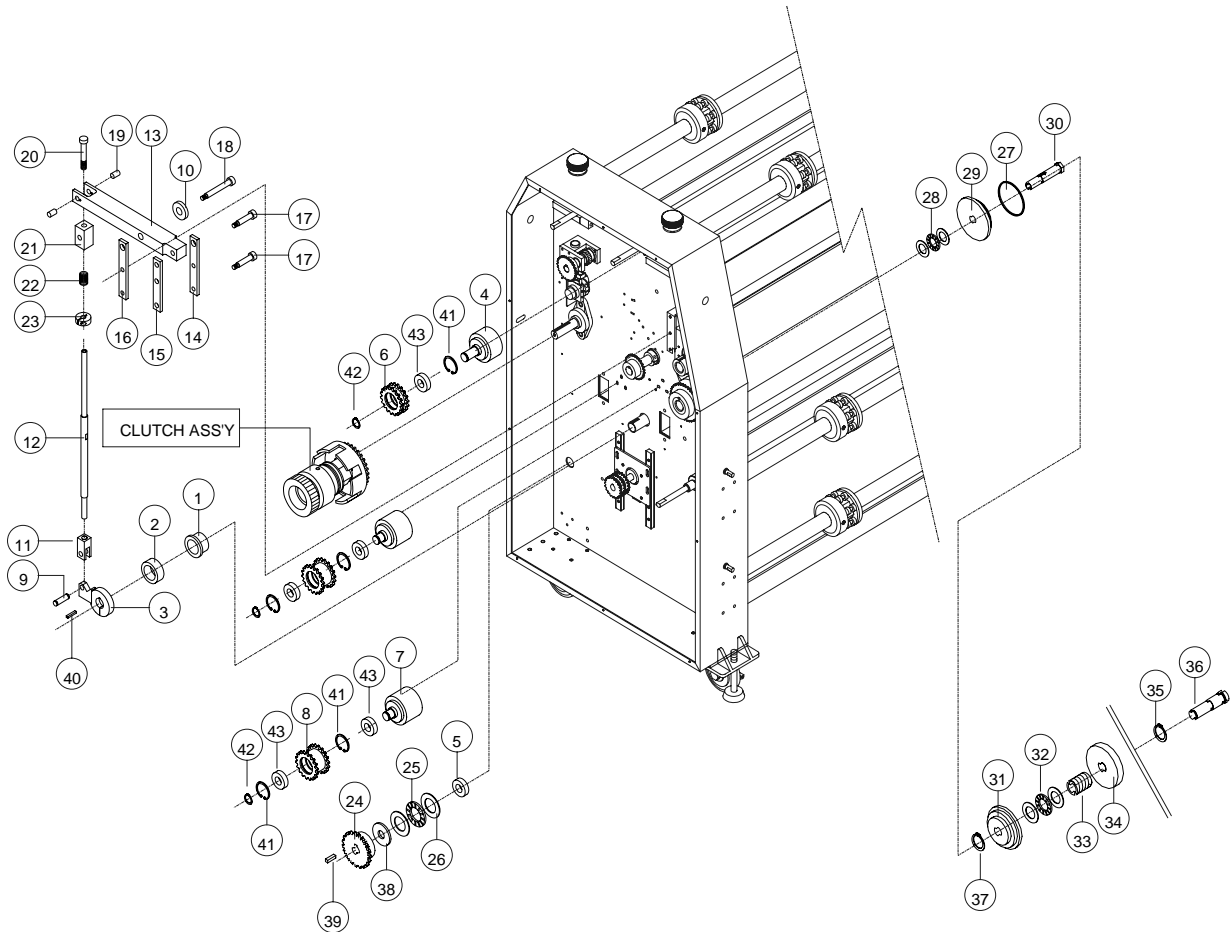
No.	Parts Code	Item	Spec	Quantity
1	613020707	FALCON CHAIN TENSION(DRIVE)	MC(WHITE) F45*70	3EA
2	635700180	ROLLER CHAIN	RS35H(78.5PCS)	1EA
3	635700186	ROLLER CHAIN	RS35H(47.5PCS)	1EA
4	635700104	ROLLER CHAIN	RS35H(39.5PCS)	1EA
5	635700094	ROLLER CHAIN	RS35H(31.5PCS)	1EA
6	635700076	ROLLER CHAIN	RS35H(60.5PCS)	1EA
7	635700113	ROLLER CHAIN	RS35H(40PCS)	1EA
8	635700179	ROLLER CHAIN	RS35H(47PCS)	1EA



This print is the property of GBC Films Group. The information thereon is submitted in confidence.									
								<b>GBC Films Group</b>	
								4151 Anderson Road, DeForest, WI 53532	
UNLESS OTHERWISE SPECIFIED		TOLERANCE		FINISH TO					
DIM. AS SHOWN		TOL.		FINISH TO					
XX		---		+1.64		-.010			
X		---		---		---			

**PROPRIETARY**

GBC PRO-TECH CLAIMS PROPRIETARY RIGHTS TO THE MATERIAL DISCLOSED ON THIS DRAWING. IT IS ISSUED IN CONFIDENCE FOR ENGINEERING INFORMATION ONLY AND SHALL NOT BE REPRODUCED, COPIED OR DISCLOSED IN WHOLE OR IN PART, OR USED FOR MANUFACTURE OR FOR ANY OTHER PURPOSE WITHOUT WRITTEN PERMISSION FROM GBC PRO-TECH

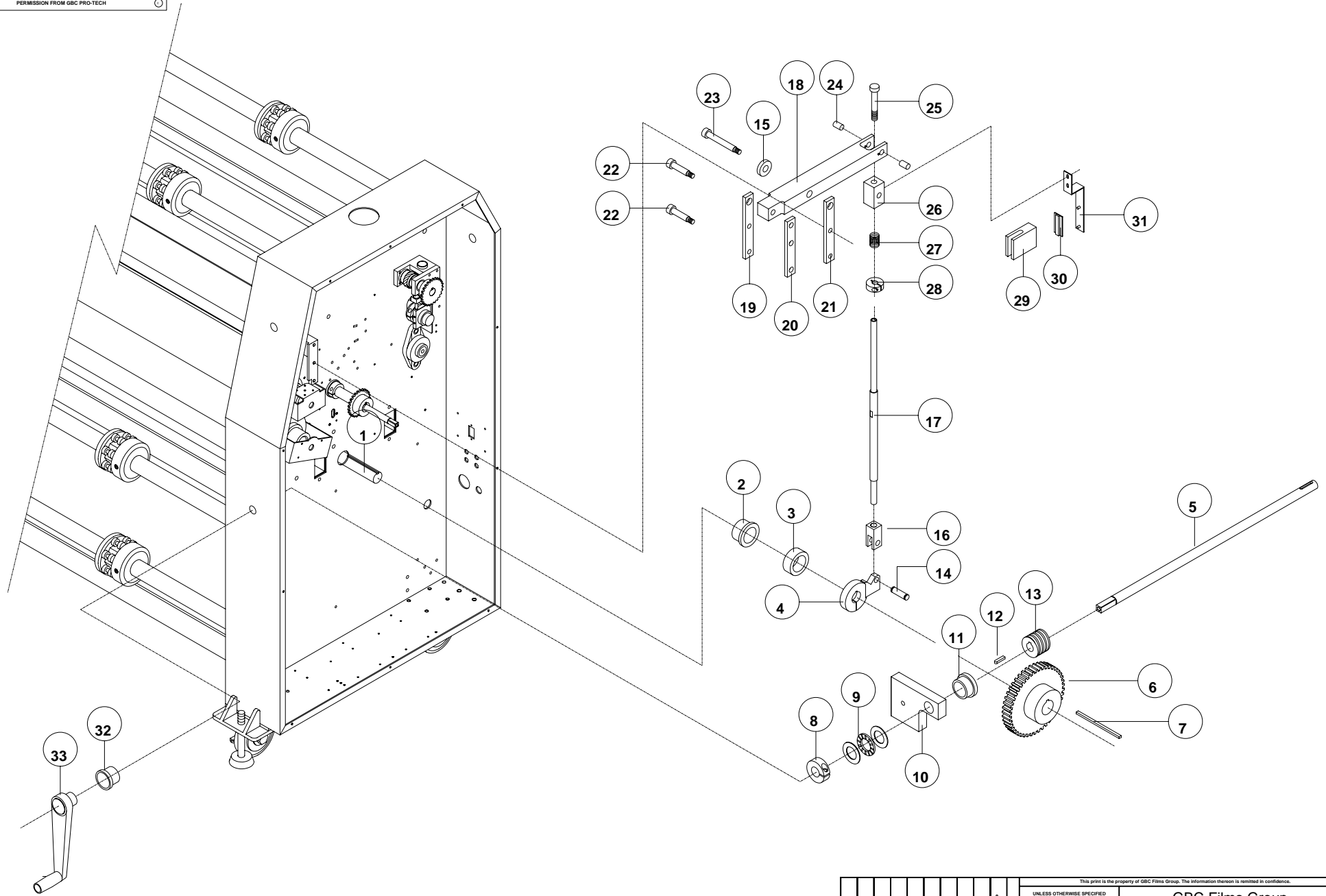


No.	Parts Code	Item	Spec	Quantity
1	613020726	FALCON MC BUSH(WORM SHAFT)	MC(BLACK) F45*F30*11	1EA
2	632502361	SPACER BUSH(FOR LIFT SHAFT)	MC F45*F31*17.5/H470	1EA
3	613020709	FALCON CLAMP LEVER COLLAR	S45C F50*13	1EA
4	632502352	G3064 IDLE GEAR BOSS(FOR TOP)	S45C F60*77*F17/H060	1EA
5	701010117	BALL BEARING	# 6903	1EA
6	635800476	G3064 IDLE SPROCKET(FOR TOP)	RS35 18T*18T*35.5*F35	1EA
7	632502389	IDLE GEAR BOSS( HEAT ROLLER)	S45C F60*77*F17/H051	2EA
8	635800475	IDLE SPROCKET(HEAT ROLLER)	RS35 18T*20.0*F35	2EA
9	613020710	FALCON CLEVIS PIN(LOW)	S45C F10*25	1EA
10	632502360	SPACER BUSH(FOR LIFT LINK)	MC F30*F13.2*10/H470	1EA
11	613020711	FALCON CLEVIS (LOW)	S45C 19*19*43	1EA
12	613020733	FALCON PUSH ROD	S45C F13*387	1EA
13	632502358	G3064 ROLL LIFT LINK	S45C 38*25.5*284	1EA
14	613020723	LINK BRACKET(BEARING HOUSING)	S45C 117*19.*6.5	1EA
15	613020722	LINK BRT(BEARING HSING,REAR)	S45C 117*19.*6.5	1EA
16	613020724	FALCON LINK BRACKET(HINGE)	S45C 130*19*6.5	1EA
17	810301439	STRIPPER BOLT(GBC3064)	M8 F10*40/3064O410	2EA
18	810301438	STRIPPER BOLT(GBC3064)	M10 F13*60/3064O410	1EA
19	613020767	HINGE PIN	S45C F10*13	2EA
20	701109351	STRIPPER BOLT	M8 F10*65	1EA
21	613020720	FALCON HINGE BLOCK	S45C 25*25*44.5	1EA
22	701090207	HEAT ROLLER SPRING(SPRING)	2.7T*F12.5*F24.6*30MM	1EA
23	613020718	HEAT ROLLER SPRING COLLAR	S45C F30*10	1EA
24	701080811	REWINDER SPROCKET	RS35 20T*F45*F17	1EA
25	701020220	THRUST NIDDLE ROLL BEARING	AXK3047	1EA
26	701110705	THRUST NIDDLE WASHER	AS3047	2EA
27	634300071	FALCON "O" RING	G70	1EA
28	635400146	THRUST NIDDLE ROLL BEARING	AXK1730+AS	1EA
29	613020743	FALCON REWINDER PLUG	AL6061 F89*F17*19.5	1EA
30	613020742	FALCON REWINDER PLUG BOLT	S20C M16*19*89	1EA
31	613020741	REWINDER SUPPORT CORE	MC(BLK) F89*F20*22.5	1EA
32	635400060	THRUST NIDDLE BEARING ASSY	AXK2035+AS	1EA
33	701090190	REWINDER TENSION SPRING	SUS2.5T F25*40	1EA
34	613020745	REWINDER TENSION WHEEL	AL6061 F89*15	1EA
35	701090724	SPRING S RING	F25	1EA
36	613020744	REWINDER TENSION SHAFT	S20C F25*F20*89	1EA
37	701090712	SPRING S RING	F20	1EA
38	630500440	G3064 REAR REWINDER WASHER	SPC4.0T F47*F17.1(Cr)	1EA
39	613030730	E/M KEY	5*5*15mm	1EA
40	632501601	KEY	S45C 6*6*25	1EA
41	810400243	SPRING S(IN) RING	F35	5EA
42	701090731	SPRING S RING	F17	3EA
43	635400160	BALL BEARING	#6003(SKF)	4EA

UNLESS OTHERWISE SPECIFIED TOLERANCE				FINISH TO BE				TITLE :			
DM AS SHOWN	TOL.							GBC Films Group 4151 Anderson Road, DeForest, WI 53532			
XX	±.154							Table Assembly			
X	±.050							DATE : 12-28-05			
XX	±.015							DRAWN BY : NG			
XXX	±.020							DWG SCALE : N/A			
XXXX	±.005							DWG : 000-006			

**PROPRIETARY**

GBC PRO-TECH CLAIMS PROPRIETARY RIGHTS TO THE MATERIAL DISCLOSED ON THIS DRAWING. IT IS ISSUED IN CONFIDENCE FOR ENGINEERING INFORMATION ONLY, AND SHALL NOT BE REPRODUCED, COPIED OR DISCLOSED IN WHOLE OR IN PART, OR USED FOR MANUFACTURE OR FOR ANY OTHER PURPOSE WITHOUT WRITTEN PERMISSION FROM GBC PRO-TECH



This print is the property of GBC Films Group. The information thereon is rendered in confidence.			
UNLESS OTHERWISE SPECIFIED TOLERANCE			GBC Films Group 4151 Anderson Road, DeForest, WI 53532
DIM. AS SHOWN	TOL.	FINISH TO BE	
XX	±.164	125	TITLE :  <b>Lifting Mechanism</b>
X	±.050	√	
XX	±.010		
XXX	±.020	ANGLES	DATE : <b>10/09/05</b>
XXXX	±.005	±.10	DRAWN BY : <b>NG</b>
			DWG SCALE : <b>N/A</b>
			DWG : <b>000-004</b>

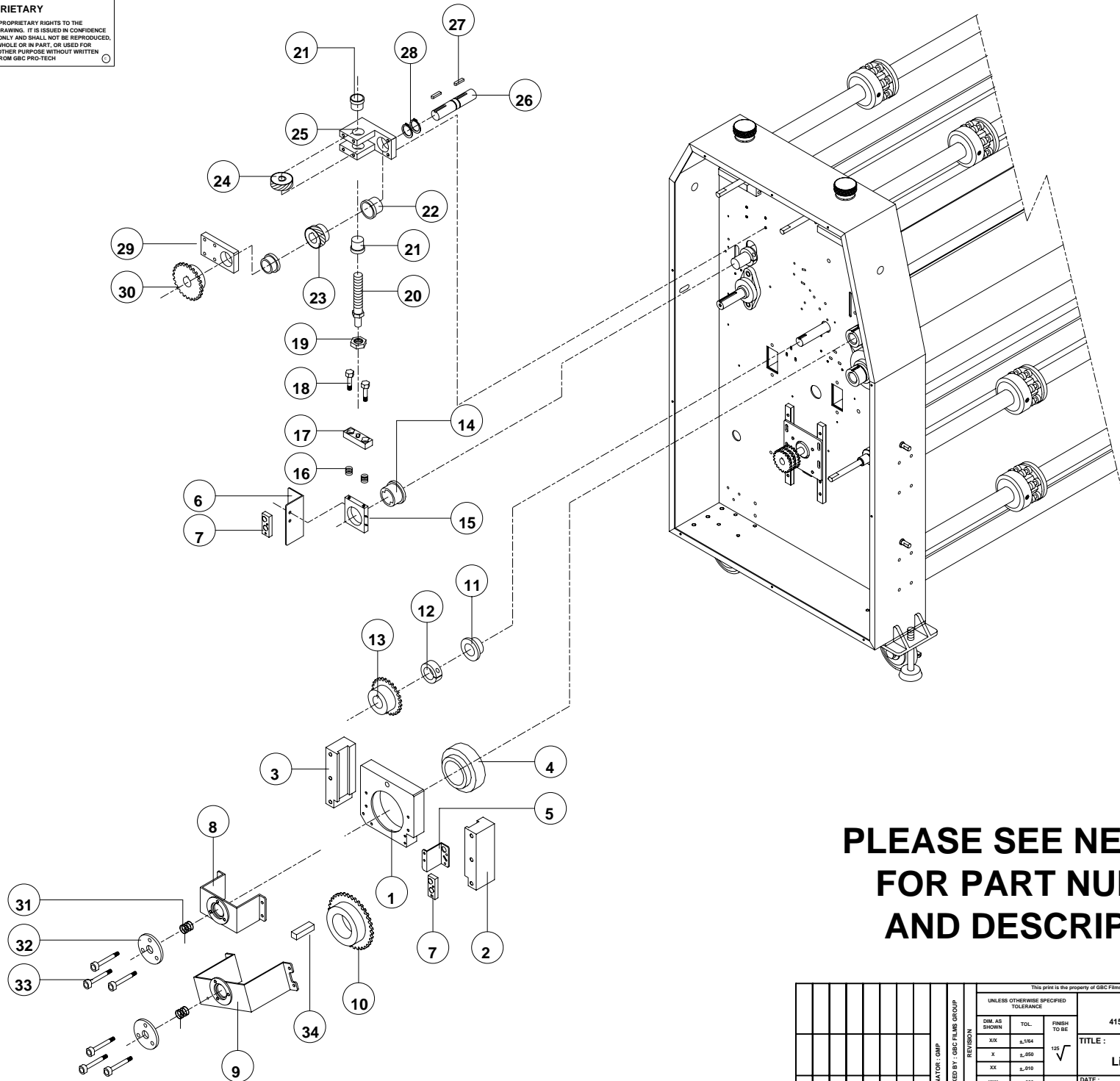
PROPRIETARY  
 MATERIAL SPECIFICATIONS AND DIMENSIONS ARE THE PROPERTY OF GBC FILMS GROUP. THIS DRAWING IS FOR REFERENCE ONLY. IT IS NOT TO BE USED FOR REPRODUCTION OR MANUFACTURE IN WHOLE OR IN PART, OR USED FOR ANY OTHER PURPOSE WITHOUT THE WRITTEN PERMISSION FROM GBC FILMS GROUP.

No.	Parts Code	Item	Spec	Quantity
1	632502357	G3064 HEAT ROLL LIFT SHAFT	S45C F30*1872/3064H430	1EA
2	613020726	FALCON MC BUSH(WORM SHAFT)	MC(BLACK) F45*F30*11	1EA
3	632502361	G3064 SPACER BUSH(FOR LIFT SHAFT)	MC F45*F31*17.5/3064H470	1EA
4	613020709	FALCON CLAMP LEVER COLLAR	S45C F50*13	1EA
5	632502363	G3064 ROLLER LIFT SHAFT	S45C F16*491	1EA
6	701080812	WORM WHEEL	60T*F50*F30	1EA
7	632501714	KEY	S45C 6*6*100	1EA
8	613020766	HANDLE LOCK COLLAR	S45C F16*F35*12	1EA
9	635400146	THRUST NIDDLE ROLL BEARING	AXK1730+AS	1EA
10	632502359	G3064 CRANK LIFT SHAFT BLOCK	S45C 82.5*115*19/3064H450	1EA
11	701060151	OILLESS BUSHING	SFB 1620	1EA
12	613030730	E/M KEY	5*5*15mm	1EA
13	701080813	WORM	M2.5 F16*35	1EA
14	613020710	FALCON CLEVIS PIN(LOW)	S45C F10*25	1EA
15	632502360	G3064 SPACER BUSH(FOR LIFT LINK)	MC F30*F13.2*10/3064H470	1EA
16	613020711	FALCON CLEVIS (LOW)	S45C 19*19*43	1EA
17	613020733	FALCON PUSH ROD	S45C F13*387	1EA
18	632502358	G3064 ROLL LIFT LINK	S45C 38*25.5*284	1EA
19	613020723	FALCON LINK BRACKET(BEARING HOUSING,FRON	S45C 117*19.*6.5	1EA
20	613020722	FALCON LINK BRACKET(BEARING HOUSING,REAR	S45C 117*19.*6.5	1EA
21	613020724	FALCON LINK BRACKET(HINGE)	S45C 130*19*6.5	1EA
22	810301439	STRIPPER BOLT(GBC3064)	M8 F10*40/3064O410	2EA
23	810301438	STRIPPER BOLT(GBC3064)	M10 F13*60/3064O410	1EA
24	613020767	HINGE PIN	S45C F10*13	2EA
25	701109351	STRIPPER BOLT	M8 F10*65	1EA
26	613020720	FALCON HINGE BLOCK	S45C 25*25*44.5	1EA
27	701090207	HEAT ROLLER SPRING( SPRING)	2.7T*F12.5*F24.6*30MM(BLUE)	1EA
28	613020718	FALCON HEAT ROLLER SPRING COLLAR	S45C F30*10	1EA
29	613020729	FALCON PRESSURE LEVER	MC(WHITE) 60*50*20	1EA
30	706011727	PCB ASS'Y FALCON60 PRESSURE SENSOR	FC60 SV	1EA
31	601410716	FALCON PRESSURE PCB BRACKET	SPC 3.2T 25*180*42.2/FA60P141	1EA
32	613020728	FALCON MC BUSH(HEAT ROLLER CRANK SHAFT)	MC(BLACK) F32*F16*13	1EA
33	703070374	CRANK HANDLE	CRK-A128	1EA

ORIGINATOR : GMP	
CHECKED BY : GBC FILMS GROUP	
REVISION	
DATE	BY
10/09/05	NG
GBC Films Group 4151 Anderson Road, DeForest, WI 53532	
TITLE : Lifting Mechanism	
DATE	DWG NO
10/09/05	000-005
DRAWN BY	DWG SCALE
NG	N/A

**PROPRIETARY**

GBC PRO-TECH CLAIMS PROPRIETARY RIGHTS TO THE MATERIAL DISCLOSED ON THIS DRAWING. IT IS ISSUED IN CONFIDENCE FOR ENGINEERING INFORMATION ONLY AND SHALL NOT BE REPRODUCED, COPIED OR DISCLOSED IN WHOLE OR IN PART, OR USED FOR MANUFACTURE OR FOR ANY OTHER PURPOSE WITHOUT WRITTEN PERMISSION FROM GBC PRO-TECH



**PLEASE SEE NEXT PAGE  
FOR PART NUMBERS  
AND DESCRIPTIONS**

UNLESS OTHERWISE SPECIFIED TOLERANCE			GBC Films Group 4151 Anderson Road, DeForest, WI 53532			
DIM AS SHOWN	TOL.	FINISH TO BE	TITLE :			
XX	±.164	125 √	Lifting Mechanism/ Drive Side			
X	±.050		DATE:	DRAWN BY:	DWG SCALE:	DWG :
XX	±.010		10/09/05	NG	N/A	000-002
XXX	±.020	ANGLES				
XXXX	±.005	±.10°				

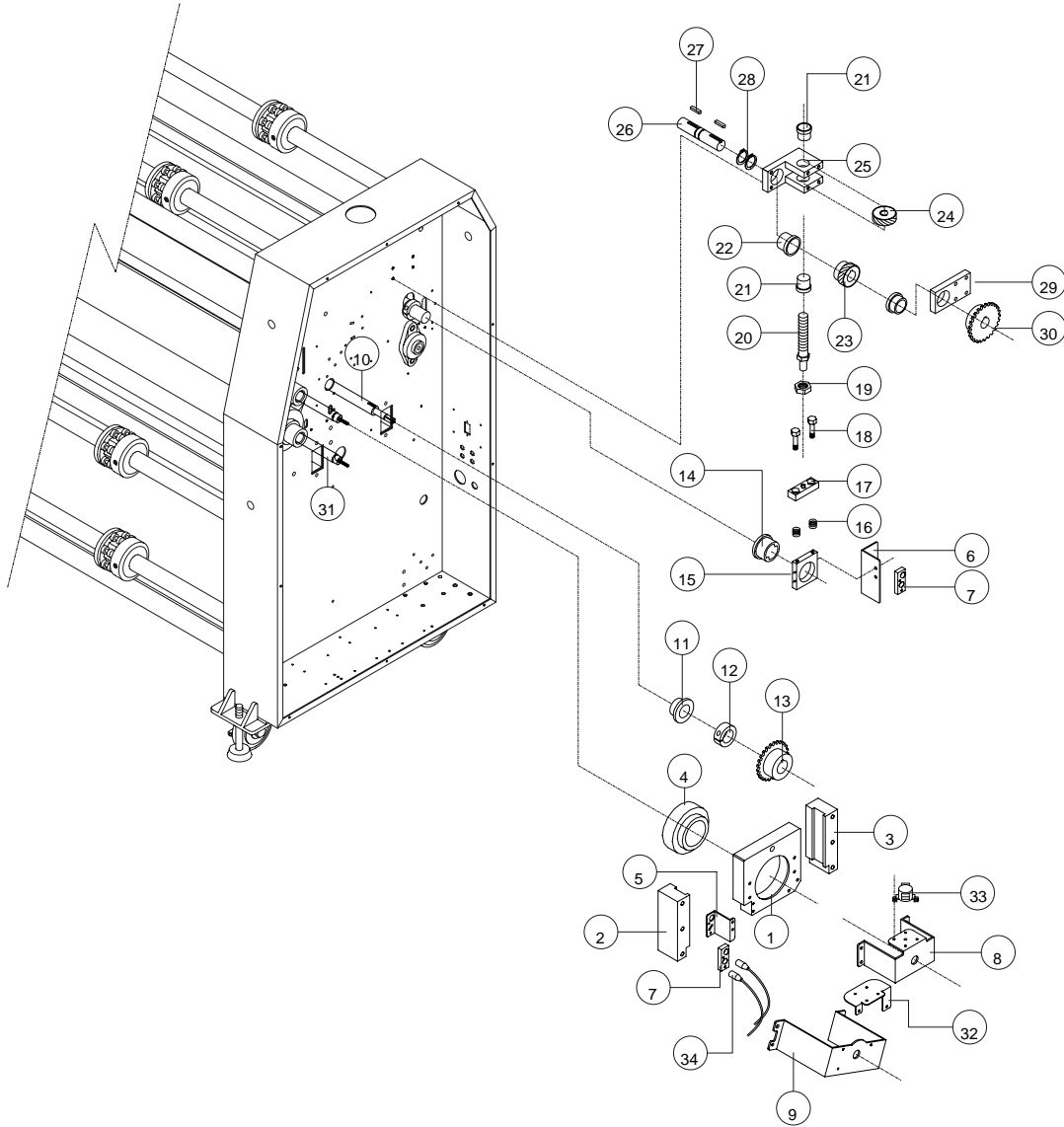
GBC FILMS GROUP PROPRIETARY RIGHTS TO THE  
 INFORMATION CONTAINED HEREIN IS RESERVED.  
 NO PART OF THIS DOCUMENT IS TO BE REPRODUCED,  
 COPIED OR DISCLOSED IN WHOLE OR IN PART, OR USED FOR  
 ANY PURPOSE WITHOUT THE EXPRESS WRITTEN  
 PERMISSION FROM GBC FILMS GROUP.

No.	Parts Code	Item	Spec	Quantity
1	632502353	G3064 HEAT ROLLER BEARING BLOCK(L)	S45C 140*127*26.5/3064H410	1EA
2	632502355	G3064 BEARING BLOCK GUIDE(L)	S45C 30*48*127/3064H420	1EA
3	632502356	G3064 BEARING BLOCK GUIDE(R)	S45C 30*48*127/3064H420	1EA
4	701010160	BALL BEARING	UR 210	1EA
5	630500442	G3064 PICO BLOCK BRACKET(HEAT/L)	SPC2.0T 46*40/3064P170	1EA
6	630500444	G3064 PICO BLOCK BRACKET(PULL/L)	SPC2.0T 913*38.5*45/3064P180	1EA
7	632502320	G4064 PICO BLOCK	BAKELITE 18*46*8/4064H070	2EA
8	630500458	G3064 HEATER SUPPORT(UP/L)	SPC3.0T 125*56(GY0806)	1EA
9	630500460	G3064 HEATER SUPPORT(LOW/L)	SPC3.0T 183*55(GY0806)	1EA
10	635800466	G4064 H/ROLLER SPROCKET	RS35 36T*F50*21.5(KEY)	1EA
11	613020727	MC BUSH(PULL ROLLER LIFT SHAFT	MC(BLACK) F35*F25*11	1EA
12	613020731	PULL ROLLER LIFT SHAFT COLLAR	S20C F40*F25*15	1EA
13	701080811	LIFT SPROCKET(FOR HANDLE)	RS35 24T*F50*F25	1EA
14	613020739	FALCON PULL ROLLER BUSH	Bs F45*F30*25	1EA
15	613020738	FALCON PULL ROLLER BLOCK	AL6061 51*55.5*10	1EA
16	701090208	PULL ROLLER SPRING( SPRING)	2.0T*F11.3*F19.7*26MM	2EA
17	613020740	FALCON PULL ROLLER SPRING PLATE	AL6061 57*19*12.5	1EA
18	701109350	STRIPPER BOLT	M8 F10*30	2EA
19	810100098	NUT	M12*1.25P(3CLASS)	1EA
20	701080816	LIFT SCREW	Tr16 19*114.5	1EA
21	701060150	OILLESS BUSHING	SFB 1615	2EA
22	701060152	OILLESS BUSHING	SFB 2015	2EA
23	701080815	LIFT HELICAL GEAR	M1.25 25.5*F30*F20	1EA
24	701080814	IDLE HELICAL GEAR	M1.25 12.5*Tr16	1EA
25	613020736	FALCON LIFT GEAR BLOCK	AL6061 89*44.5*59	1EA
26	613020737	FALCON LIFT GEAR SHAFT	S45C F20*98	1EA
27	613030730	E/M KEY	5*5*15mm	2EA
28	701090712	SPRING S RING	AL6061 86*44.5*12.5	2EA
29	613020735	FALCON LIFT GEAR BLOCK COVER		1EA
30	701080808	LIFT SPROCKET(FOR GEAR)	RS35H 26T*F50*F20	1EA
31	810400244	G4064 HEATER SPRING	SUS 2.0T F35*38	2EA
32	630500463	G4064 SPRING PLATE	SPC5.0T F60*F16.2(GY0806)	2EA
33	632501918	TALON80 HEATER HOLDER GUIDE BOLT	S45C F7*65*M6/TL80H360	6EA
34	632501601	KEY	S45C 6*6*25	1EA

ORIGINATOR : GMP								
CHECKED BY : GBC FILMS GROUP								
REVISION								
<table border="1"> <tr> <th>NO.</th> <th>DATE</th> <th>DESCRIPTION</th> </tr> <tr> <td> </td> <td> </td> <td> </td> </tr> </table>	NO.	DATE	DESCRIPTION					
NO.	DATE	DESCRIPTION						
<table border="1"> <tr> <td>DATE</td> <td>10/09/05</td> </tr> <tr> <td>DRAWN BY</td> <td>NG</td> </tr> <tr> <td>DWG SCALE</td> <td>N/A</td> </tr> <tr> <td>DWG NO</td> <td>000-003</td> </tr> </table>	DATE	10/09/05	DRAWN BY	NG	DWG SCALE	N/A	DWG NO	000-003
DATE	10/09/05							
DRAWN BY	NG							
DWG SCALE	N/A							
DWG NO	000-003							
<p style="text-align: center;"> <b>GBC Films Group</b>          4151 Anderson Road, DeForest, WI 53532          Lifting Mechanism/Drive Side       </p>								

**PROPRIETARY**

GBC PRO-TECH CLAIMS PROPRIETARY RIGHTS TO THE MATERIAL DISCLOSED ON THIS DRAWING. IT IS ISSUED IN CONFIDENCE FOR ENGINEERING INFORMATION ONLY AND SHALL NOT BE REPRODUCED, COPIED OR DISCLOSED IN WHOLE OR IN PART, OR USED FOR MANUFACTURE OR FOR ANY OTHER PURPOSE WITHOUT WRITTEN PERMISSION FROM GBC PRO-TECH



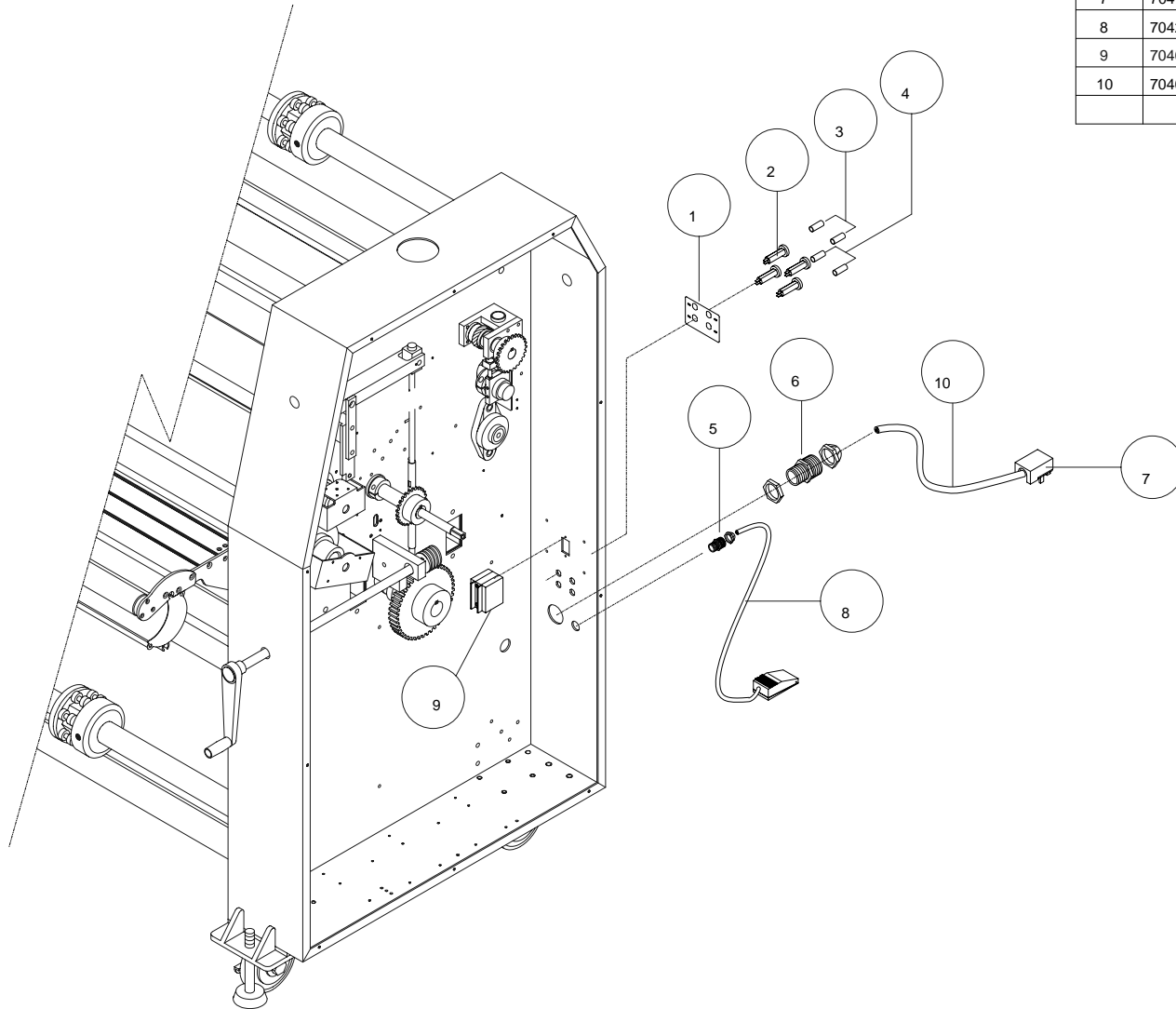
No.	Parts Code	Item	Spec	Quantity
1	632502354	HEAT ROLLER BEARING BLOCK(R)	S45C 140*127*26.5/H410	1EA
2	632502355	G3064 BEARING BLOCK GUIDE(L)	S45C 30*48*127/3064H420	1EA
3	632502356	G3064 BEARING BLOCK GUIDE(R)	S45C 30*48*127/3064H420	1EA
4	701010160	BALL BEARING	UR 210	1EA
5	630500443	G3064 PICO BLOCK BRACKET(HEAT/R)	SPC2.0T 46*40/3064P170	1EA
6	630500445	G3064 PICO BLOCK BRACKET(PULL/R)	SPC2.0T 913*38.5*45/	1EA
7	632502320	G4064 PICO BLOCK	BAKELITE 18*46*8/4064H070	2EA
8	630500459	G3064 HEATER SUPPORT(UP/R)	SPC3.0T 125*58(GY0806)	1EA
9	630500461	G3064 HEATER SUPPORT(LOW/R)	SPC3.0T 183*55(GY0806)	1EA
10	632502362	PULL ROLLER LIFT CRANK SHAFT	S45C F25*2040/3064H640	1EA
11	613020727	MC BUSH(PULL ROLLER LIFT SHAFT	MC(BLACK) F35*F25*11	1EA
12	613020731	PULL ROLLER LIFT SHAFT COLLAR	S20C F40*F25*15	1EA
13	701080809	LIFT SPROCKET(FOR HANDLE)	RS35 24T*F50*F25	1EA
14	613020739	FALCON PULL ROLLER BUSH	Bs F45*F30*25	1EA
15	613020738	FALCON PULL ROLLER BLOCK	AL6061 51*55.5*10	1EA
16	701090208	PULL ROLLER SPRING SPRING)	2.0T*F11.3*F19.7*26MM	2EA
17	613020740	FALCON PULL ROLLER SPRING PLATE	AL6061 57*19*12.5	1EA
18	701109350	STRIPPER BOLT	M8 F10*30	2EA
19	810100098	NUT	M12*1.25P(3CLASS)	1EA
20	701080816	LIFT SCREW	Tr16 19*114.5	1EA
21	701060150	OILLESS BUSHING	SFB 1615	2EA
22	701060152	OILLESS BUSHING	SFB 2015	2EA
23	701080815	LIFT HELICAL GEAR	M1.25 25.5*F30*F20	1EA
24	701080814	IDLE HELICAL GEAR	M1.25 12.5*Tr16	1EA
25	613020736	FALCON LIFT GEAR BLOCK	AL6061 89*44.5*59	1EA
26	613020737	FALCON LIFT GEAR SHAFT	S45C F20*98	1EA
27	613030730	E/M KEY	5*5*15mm	2EA
28	701090712	SPRING S RING	20	2EA
29	613020735	FALCON LIFT GEAR BLOCK COVER	AL6061 86*44.5*12.5	1EA
30	701080808	LIFT SPROCKET(FOR GEAR)	RS35H 26T*F50*F20	1EA
31	637200009	G4064 SHEATH HEATER	14.2OHM F14*2011	2EA
32	630500462	G4064 THERMOSTAT BRACKET	SPC1.5T 86*44(GY0806)	1EA
33	704150111	BI-METAL THERMOSTAT	60T21 (250V15A 120°C)	1EA
34	637400173	PICO OPTICAL FIBER & LENSES	SFP12PS15	4EA

UNLESS OTHERWISE SPECIFIED TOLERANCE				GBC Films Group 4151 Anderson Road, DeForest, WI 53532			
DM. AS SHOWN	TOL.	FINISH TO BE		TITLE :			
XX	±.154	125 ✓		Lifting Mechanism			
X	±.050			DATE :	DRAWN BY :	DWG SCALE :	DWG :
XX	±.015			12-28-05	NG	N/A	000-001
XXX	±.020						
XXXX	±.005	ANGLES ±.10					

**PROPRIETARY**

GBC PRO-TECH CLAIMS PROPRIETARY RIGHTS TO THE MATERIAL DISCLOSED ON THIS DRAWING. IT IS ISSUED IN CONFIDENCE FOR ENGINEERING INFORMATION ONLY AND SHALL NOT BE REPRODUCED, COPIED OR DISCLOSED IN WHOLE OR IN PART, OR USED FOR MANUFACTURE OR FOR ANY OTHER PURPOSE WITHOUT WRITTEN PERMISSION FROM GBC PRO-TECH

Item No.	Part No.	Part name	Spec	Quantity
1	810700317	G4064 FUSE STICKER	PC0.3T 86*59.6/4064L021	1EA
2	704120101	FUSE HOLDER	f12.5*20mm250V10A	4EA
3	636900056	GLASS TUBE FUSE 20mm	5*20 3.0A 250V	2EA
4	636900063	GLASS TUBE FUSE 20mm	5*20 8.0A 250V	2EA
5	704140406	CORD STOPPER	PG11	1EA
6	704140415	CORD STOPPER	PG29	1EA
7	704110257	POWER CORD PLUG	400V50A(2P) USA	1EA
8	704200502	FOOT SW	500-AH	1EA
9	704091066	CIRCUIT BREAKER S/W	CC2-B0-26-650-21J-D	1EA
10	704020502	CORD CABLE UL/600V	SOW,16063/600V,10AWG	1EA



This print is the property of GBC Films Group. The information thereon is reprinted in confidence.			
UNLESS OTHERWISE SPECIFIED TOLERANCE			<b>GBC Films Group</b> 4151 Anderson Road, DeForest, WI 53532  <b>Power Cords/ Plugs</b>
DM. AS SHOWN	TOL.	FINISH TO BE	
XX	±.154	125 √	
X	±.050		
XX	±.015		
XXX	±.020		
XXXX	±.005	ANGLES ±.10	DATE : <b>12-28-05</b> DRAWN BY : <b>NG</b> DWG SCALE : <b>N/A</b> DWG : <b>000-018</b>

## TECHNICAL SERVICE & SUPPORT BULLETIN

T.S.S.B. NO. 1015

DATE: 3/10/06

MODEL: **3064WFt & 4064WFt**

SUBJECT: **REAR TABLE & BRACKETS**

PAGE: 1 Of 1

When installing a new 3064WFt or a 4064WFt laminator, you will need to install the left / right brackets and rear table. On most installations you have to remove the rear table & brackets for the laminator to pass through a standard 36" door. In some installations the laminator cannot be placed until a service technician arrives to remove the rear table & brackets. The rear table and brackets will be placed on the inside of the laminator, which will also protect them during shipping.

R.P. 3/10/06

10303 - 80<sup>TH</sup> Ave. Pleasant Prairie, WI. 53158 • PH 800-285-1533 • Fax 888-821-3736 • [www.gbc.com](http://www.gbc.com)

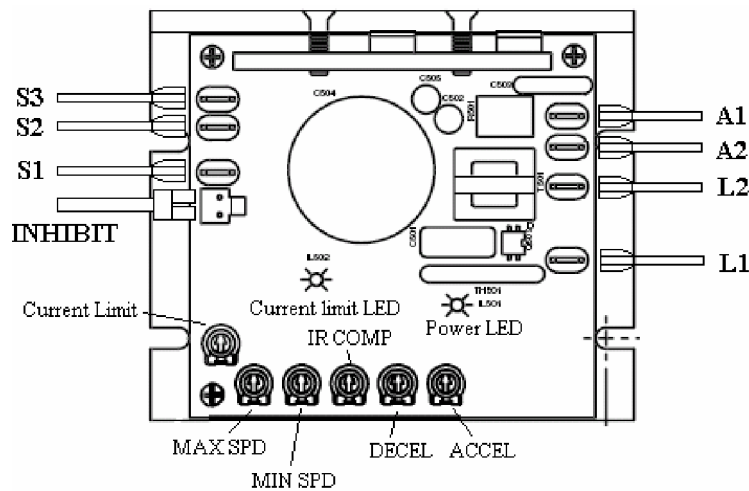
Bookletmakers • Collators • Corner Rounders • Finishers • Folders • Joggers • Laminators • Paper Cutters  
Paper Drills • Punches • Saddle Stitchers • Shredders • Shrink Wrappers • Trimmers

## TECHNICAL SERVICE & SUPPORT BULLETIN

T.S.S.B. NO.	1015A	DATE:	4/21/06
MODEL:	3064WFt & 4064WFt		
SUBJECT:	MOTOR DRIVER P.C. BOARD INHIBIT CABLE		PAGE: 1 of 2

There is a cable connector currently on the 3064WFt & 4064WFt that connects the Inhibit location on the Motor Driver Board to the Main Board, position CN27. The connector that goes to the Motor Driver board is not the correct connector. This has been corrected by Manufacturing.

Please replace the existing connector/cable with the correct connector/cable. The part number is 185334.



## TECHNICAL SERVICE & SUPPORT BULLETIN

T.S.S.B. NO.	<b>1015C</b>	DATE:	8/14/06
MODEL:	<b>3064WFt SERIES II</b>		
SUBJECT:	<b>PRODUCT LAUNCH OF THE 3064WFt SERIES II</b>	PAGE:	1 of 1

The **3064WFt Series II** has replaced the 3064WFt laminator. The first **3064WFt Series II** serial number is SEO4101G. There is no physical difference in the machines other than two electrical differences, which are:

- **3064WFt Series II** has one Pico Guard Fiber Optic Safety Controller P/N# 637400194, and the Relay Board P/N# 638900390 is different and not compatible with the 3064WFt.
- 3064WFt has two Pico Guard Fiber Optic Safety Controllers P/N# 637400168, and the Relay Board P/N# 638900366 is different and not compatible with the Series II.

**NOTE: To determine if you have a 3064WFt Series II Laminator, there is a Series II label located inside the electrical right side cover above the circuit breaker along with part number for the Relay Board needed for that unit.**

R.P. 8/14/06

10303 80<sup>th</sup> Avenue, Pleasant Prairie, WI 53158 • PH 800-723-4000 • fax 888-821-3736 • www.gbc.com

Bookletmakers • Collators • Corner Rounders • Finishers • Folders • Joggers • Laminators • Paper Cutters  
Paper Drills • Punches • Saddle Stitchers • Shredders • Shrink Wrappers • Trimmers