

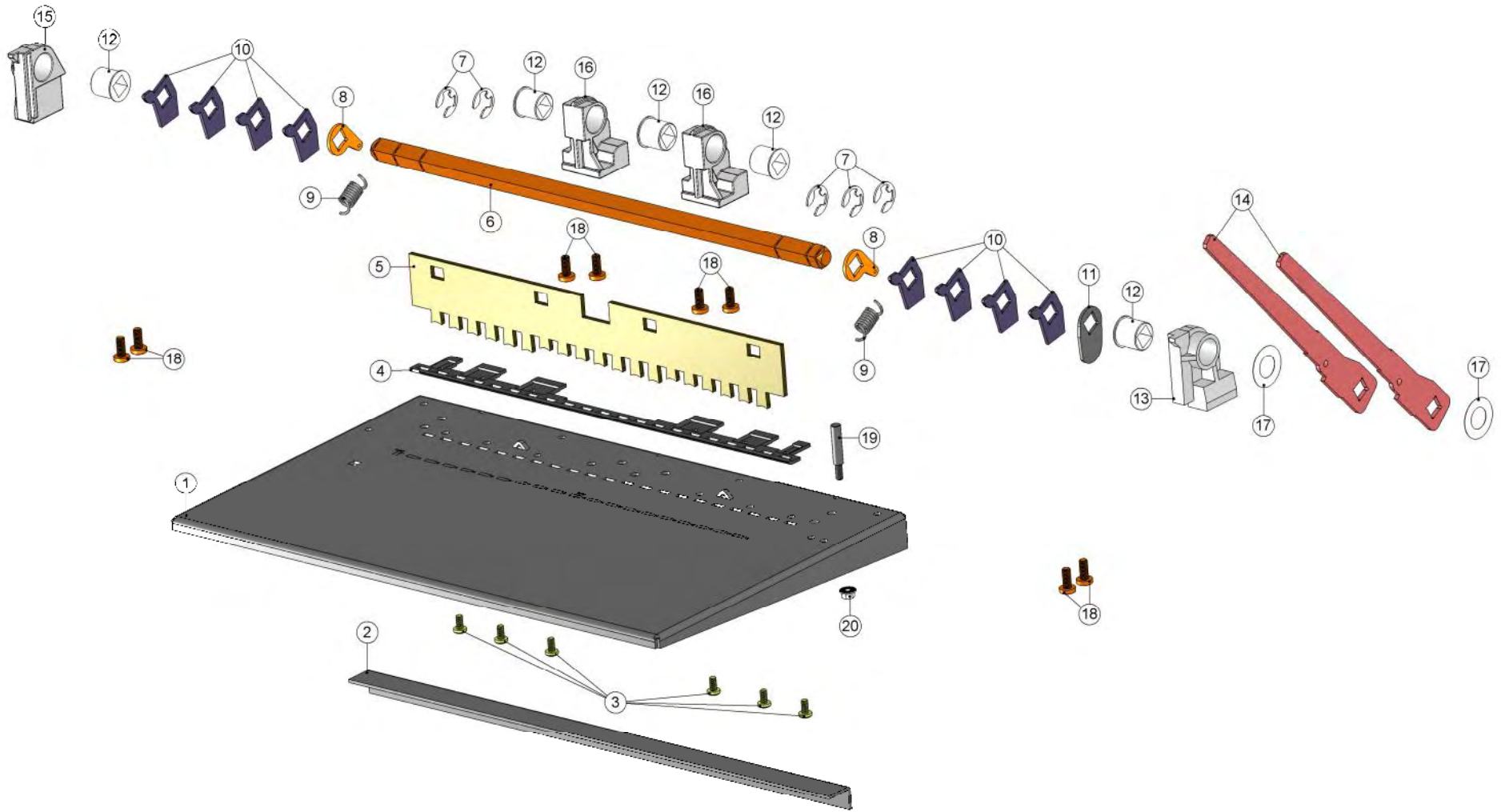
**Ersatzteilkatalog**  
**Spare parts catalogue**  
**Catalogue des pièces détachées**  
**Catálogo de peças**

<i>Edition</i>	<i>Serial No.</i>	<i>Date</i>	<i>Name</i>
1	QEP0001-	May 2004	Ibico Portuguesa

	<i>Version</i>	<i>Product No.</i>
	Comb Binder USA	27000

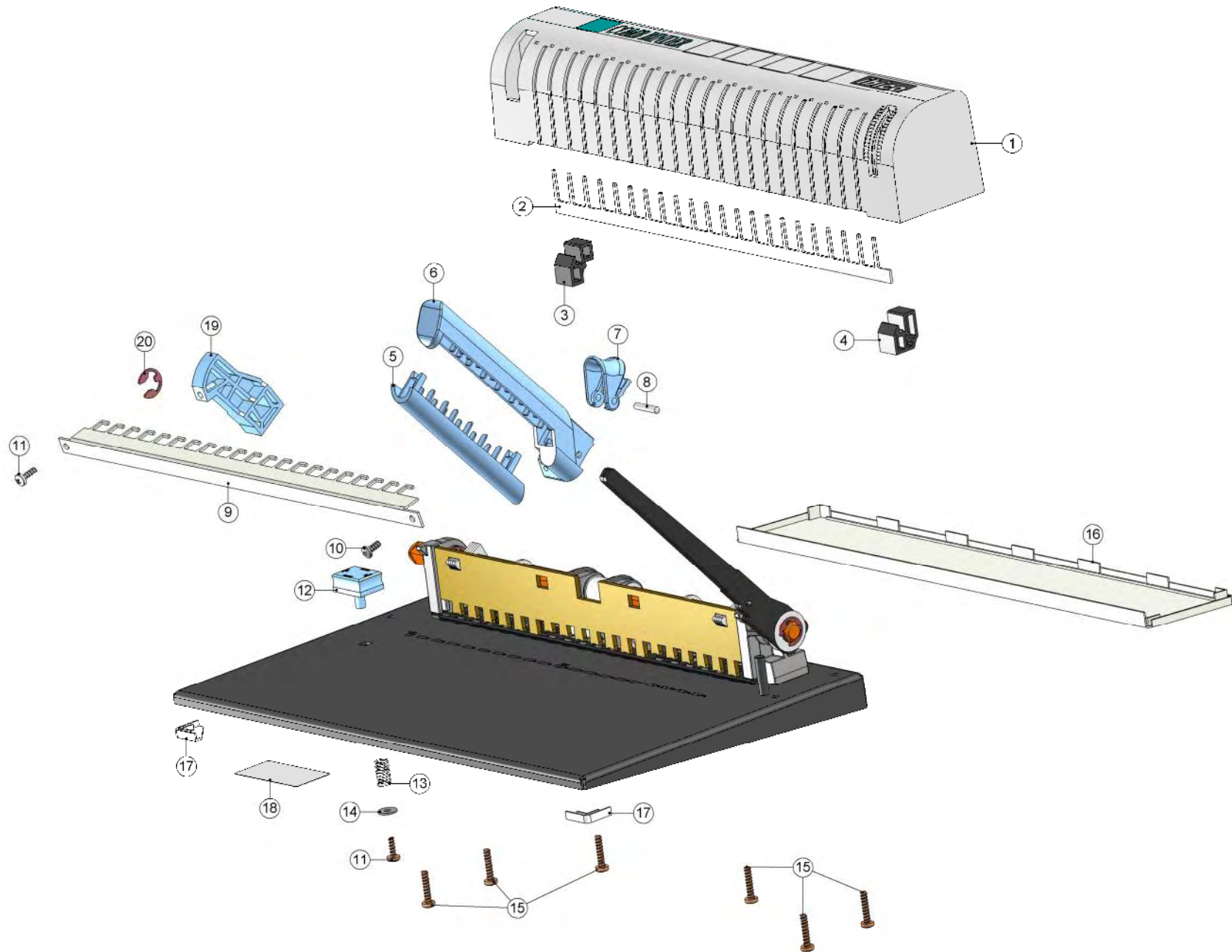
**IBICO Trading GmbH**  
CH-8212 Neuhausen  
Switzerland

Product Comb Binder USA	Serial No. QEP0001-	Date May 2004	Page / of 3 / 9
----------------------------	------------------------	------------------	--------------------



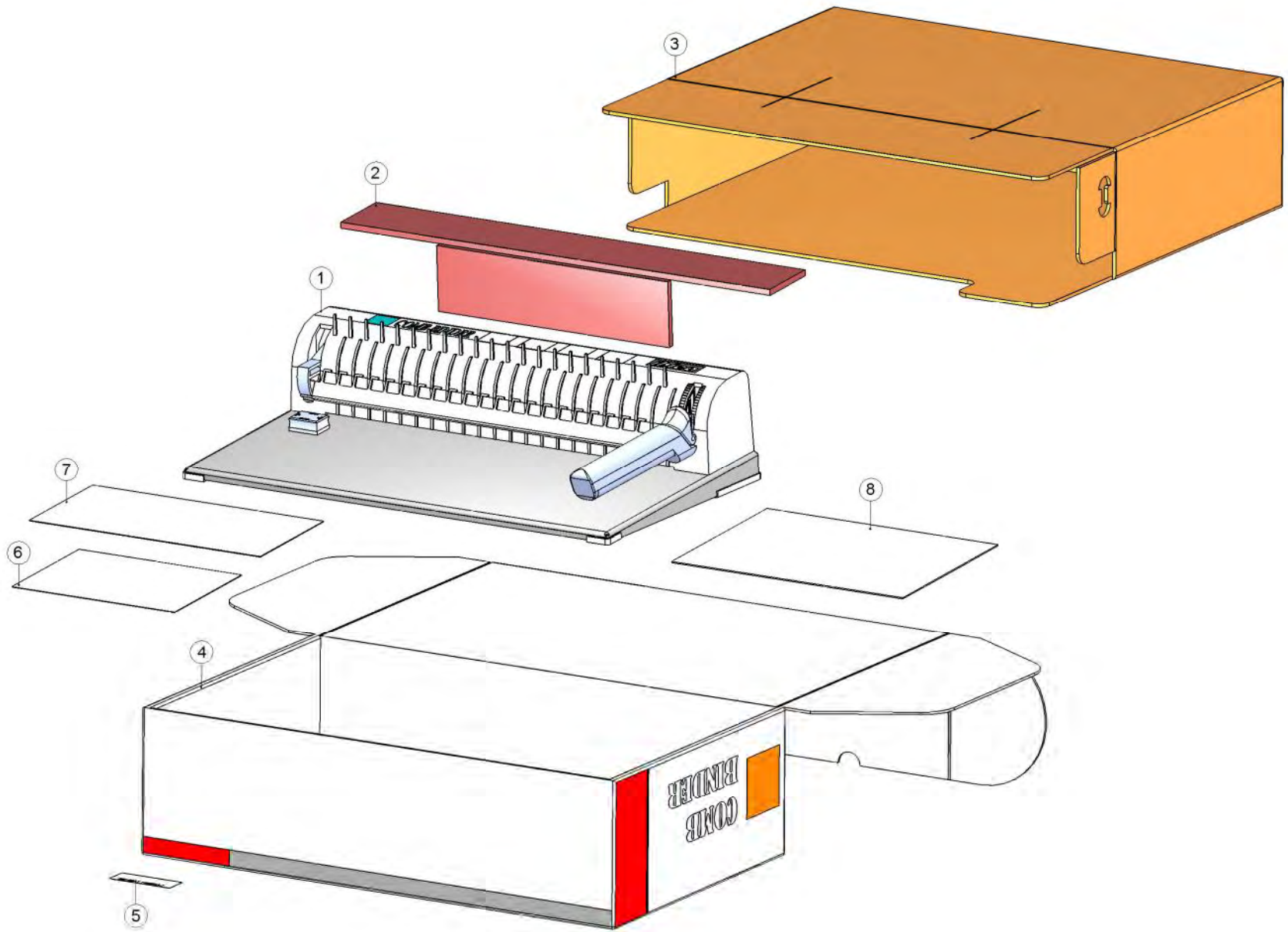
<i>Page/of</i>	<i>Product</i>	<i>Serial No.</i>	<i>Date</i>
4 / 9	Comb Binder USA	QEP0001-	May 2004

<b>Pos.</b>	<b>New Part No.</b>	<b>Old Part No.</b>	<b>Notes</b>	<b>Pre-Assemble Set</b>	<b>Description</b>
1	2-5200	----	----	1-5201.70	Bottom plate
2	2-5212	----	----	1-5201.70	Bracket
3	9-9058	----	DIN 7500 C ( M4x8 )	----	Self drilling torx screw
4	2-5118	----	----	----	Stripping device
5	2-5148	----	----	----	Punching knife 19,(USA)
6	2-5204	----	----	----	Axle
7	9-9418	----	DN 810 ( D=9 )	----	Retaining washer
8	2-5132	----	----	----	Segment
9	2-5133	----	----	----	Spring
10	2-5128	----	----	----	Cuttet lever
11	2-5213	----	----	----	Knife stopper
12	2-5114	----	----	----	Bearing bush
13	2-5117	----	----	----	Bearing right
14	2-5205	----	----	----	Connection piece
15	2-5116	----	----	----	Bearing left
16	2-5113	----	----	----	Bearing center
17	9-9308	----	DIN 988 ( 14/26x0.2 )	----	Shim ring
18	9-9046	----	DIN 7500 C ( M5x12 )	----	Self drilling torx screw
19	2-5219	----	----	----	Bolt for stop
20	9-9217	----	BN 2798 ( M4 )	----	Hexagon stop tooth nut



Page/of	Product	Serial No.	Date
6 / 9	Comb Binder USA	QEP0001-	May 2003

<b>Pos.</b>	<b>New Part No.</b>	<b>Old Part No.</b>	<b>Notes</b>	<b>Pre-Assemble Set</b>	<b>Description</b>
1	2-5218.70	----	----	----	Printed cover, Comb Binder (USA)
2	2-5210	----	----	----	Comb
3	2-5216	----	----	----	Support left for comb
4	2-5217	----	----	----	Support right for comb
5	2-5208	----	----	----	Handle bottom
6	2-5207	----	----	----	Handle top
7	2-5209	----	----	----	Closing
8	9-9649	----	DIN 6325 ( 4mx6x20 )	----	Parallel pin
9	2-5211	----	----	----	Slide
10	9-9100	----	BN 82428 ( KA40x10 )	----	PT-Cross rec.rais. ch. h.
11	9-9130	----	BN 82428 ( KA40x10 )	----	PT-Cross rec. rais. ch.h.
12	2-5215	----	----	----	Paper stop rail (USA)
13	2-2243	----	----	----	Pressure spring
14	9-9304	----	DIN 9021 A ( M4 )	----	Washer
15	9-9147	----	BN 82428 ( KA40x20 )	----	Self dilling torx screw
16	2-5202	----	----	----	Litter bin cover
17	2-5203	----	----	----	Foot front
18	2-5270	----	----	----	Type label Combman
19	2-5206	----	----	----	Connection piece
20	9-9418	----	DN 810 ( D=9 )	----	Retaining washer



<i>Page/of</i>	<i>Product</i>	<i>Serial No.</i>	<i>Date</i>
8 / 9	Comb Binder USA	QEP0001-	May 2004

<b>Pos.</b>	<b>Part No.</b>	<b>Notes</b>	<b>Description</b>
1	270024	-----	Combman 21
2	8-5203	-----	Fulling piece
3	8-5201	-----	Sales inner packing
4	8-5200	-----	Sales packaging
5	8-5202	-----	Self adhesive Combman
6	8-8275	-----	Quality certificate IBICO
7	8-8155	-----	Packing sheet caution
8	8-5210	-----	Operating manual Combman

Product Comb Binder USA	Serial No. QEP0001-	Date May 2004	Page / of 9 / 9
----------------------------	------------------------	------------------	--------------------