



2080WFt Parts List

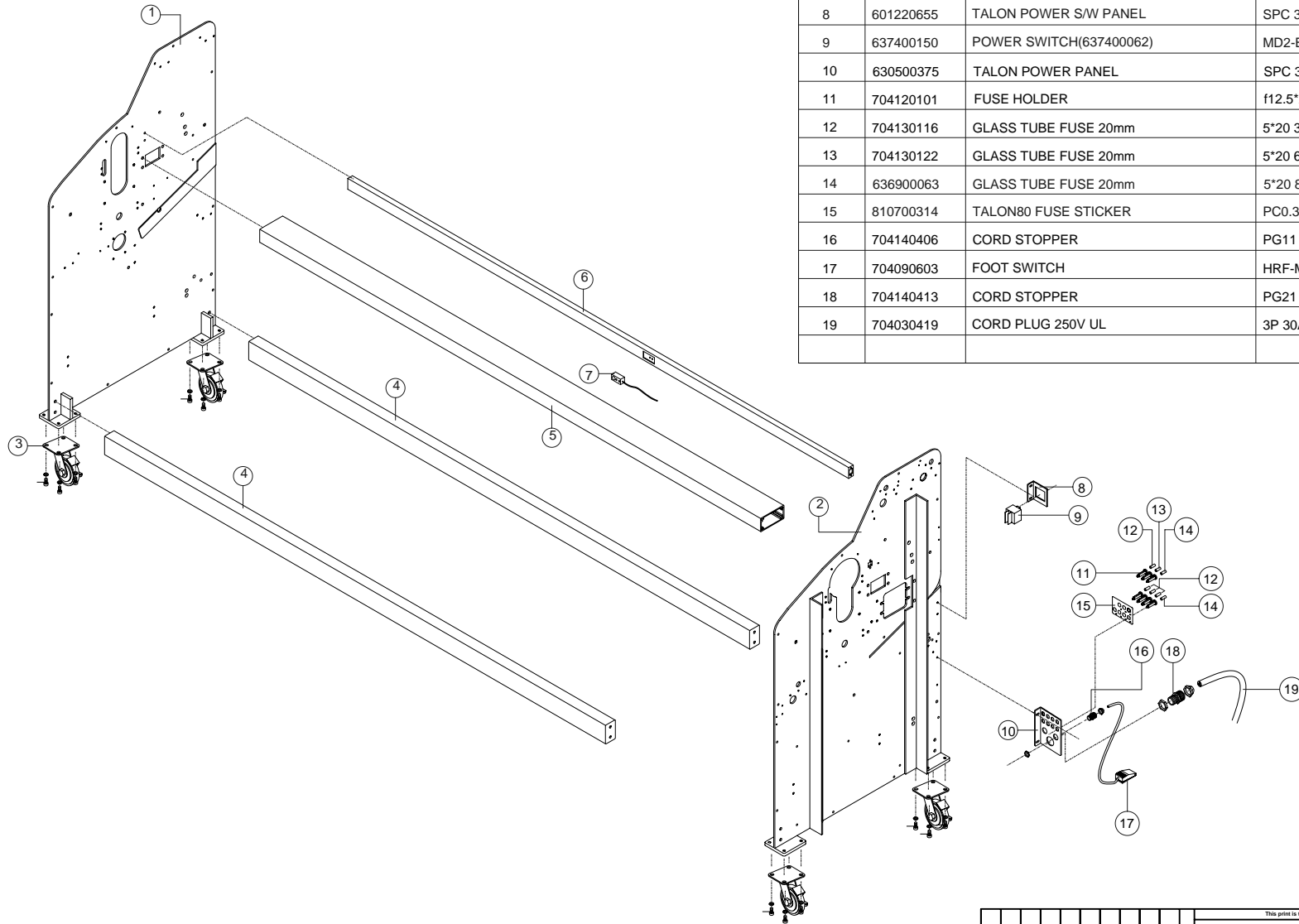


GBC IS AN ACCO BRANDS COMPANY

PROPRIETARY

GBC PRO-TECH CLAIMS PROPRIETARY RIGHTS TO THE MATERIAL DISCLOSED ON THIS DRAWING. IT IS ISSUED IN CONFIDENCE FOR ENGINEERING INFORMATION ONLY AND SHALL NOT BE REPRODUCED, COPIED OR DISCLOSED IN WHOLE OR IN PART, OR USED FOR MANUFACTURE OR FOR ANY OTHER PURPOSE WITHOUT WRITTEN PERMISSION FROM GBC PRO-TECH

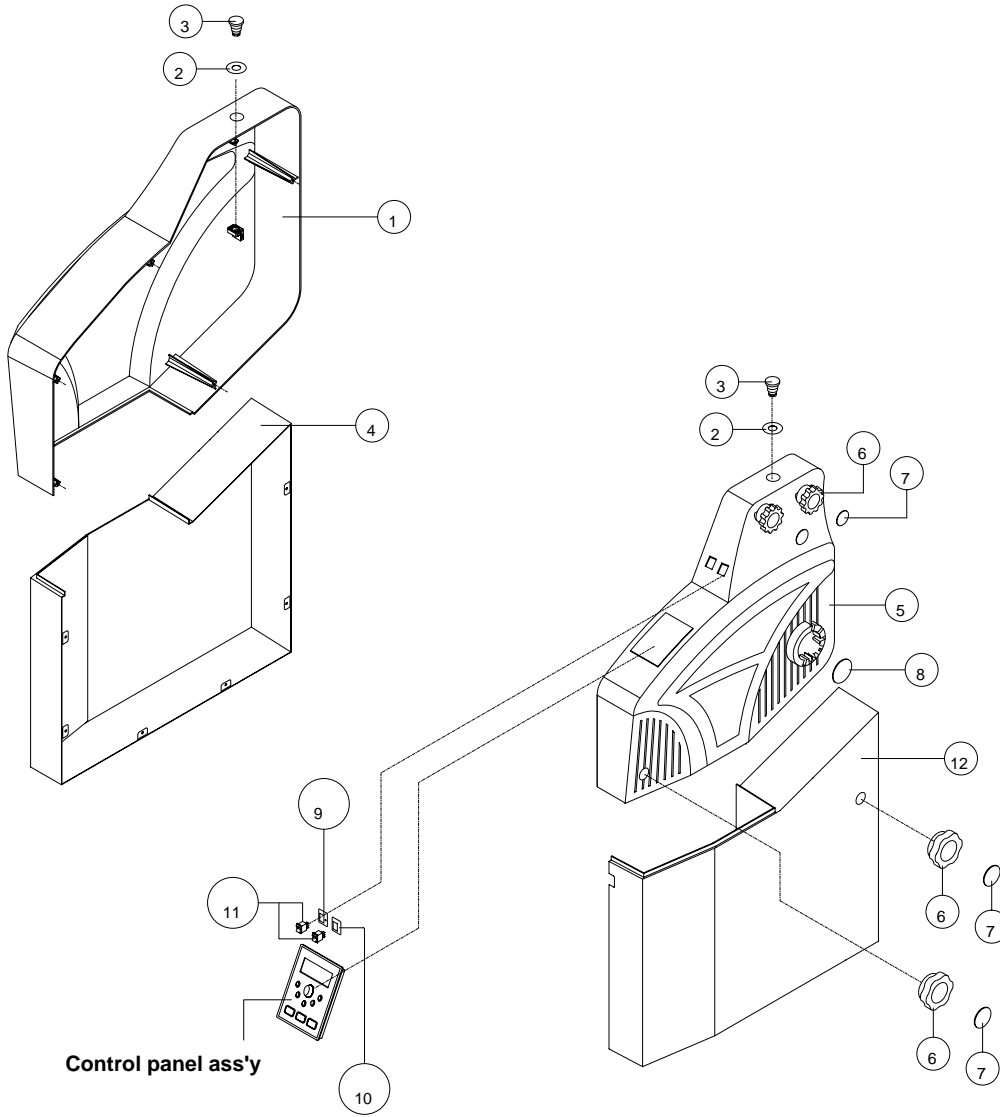
No.	Parts Code	Item	Spec	Quantity
1	630500365	TALON80 SIDE PLATE(L)	SPC 5.0T 1138*710	1EA
2	630500366	TALON80 SIDE PLATE(R)	SPC 5.0T 1138*710	1EA
3	701130503	CASTER	4*/BRAKE	4EA
4	601220659	TALON80 CROSS BAR	SPSR 2.3T 2142*45*75	2EA
5	604036189	TALON80 WIRE BAR	AL 50*100*2142	1EA
6	601220661	TALON80 SENSOR BAR	SPC 2.0T 38*2141.5	1EA
7	705200201	INFRARED SENSOR ASS'Y	TPML1-710	1EA
8	601220655	TALON POWER S/W PANEL	SPC 3.0T 80.1*64	1EA
9	637400150	POWER SWITCH(637400062)	MD2-B-24-620-2-A14-2-E	1EA
10	630500375	TALON POWER PANEL	SPC 3.0T 110*131.5	1EA
11	704120101	FUSE HOLDER	f12.5*20mm250V10A	7EA
12	704130116	GLASS TUBE FUSE 20mm	5*20 3.0A 250V	4EA
13	704130122	GLASS TUBE FUSE 20mm	5*20 6.3A 250V	1EA
14	636900063	GLASS TUBE FUSE 20mm	5*20 8A 250V	2EA
15	810700314	TALON80 FUSE STICKER	PC0.3T 86.3*62/TL80L030	1EA
16	704140406	CORD STOPPER	PG11	1EA
17	704090603	FOOT SWITCH	HRF-MD1(220V10A)	1EA
18	704140413	CORD STOPPER	PG21	1EA
19	704030419	CORD PLUG 250V UL	3P 30A 250V (NEMA 6-30P) TITAN	1EA



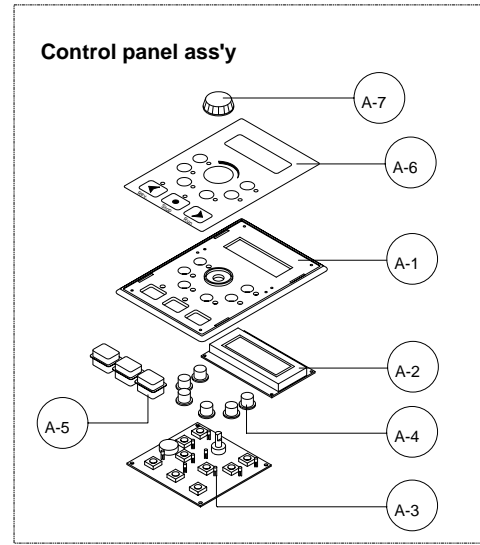
UNLESS OTHERWISE SPECIFIED TOLERANCE			
DM. AS SHOWN	TOL.	FINISH TO BE	
XX	±.124	125	√
X	±.050		
XX	±.015		
XXX	±.020	ANGLES	
XXXX	±.005	L ¹⁰	

GBC Films Group 4151 Anderson Road, DeForest, WI 53532			
TITLE : Power Cord and Foot Switch Assembly			
DATE :	DRAWN BY :	DWG SCALE :	DWG :
10/09/05	NG	N/A	000-000

PROPRIETARY
 GBC PRO-TECH CLAIMS PROPRIETARY RIGHTS TO THE MATERIAL DISCLOSED ON THIS DRAWING. IT IS ISSUED IN CONFIDENCE FOR ENGINEERING INFORMATION ONLY AND SHALL NOT BE REPRODUCED, COPIED OR DISCLOSED IN WHOLE OR IN PART, OR USED FOR MANUFACTURE OR FOR ANY OTHER PURPOSE WITHOUT WRITTEN PERMISSION FROM GBC PRO-TECH ©



No.	Parts Code	Item	Spec	Quantity
1	604020331	E/M SIDE COVER(UP/L)	ABS 3T 635.3*717.6(HFA450-28021)	1EA
2	803040343	EMERGENCY STICKER(SURELAM)	PC0.4T*F54*F28	2EA
3	704090253	EMERGENCY SWITCH	AR22V22R-02R(ZB2-BS544)400V	2EA
4	630500363	TALON80 SIDE COVER(LOW/L)	SPC1.5T 717.6*619*130/TL80P210	1EA
5	604020332	E/M SIDE COVER(UP/R)	ABS 635.3*717.6(HFA450-28021)	1EA
6	604020323	1670RS TENSION HANDLE	PC F75*F15*30(GRAY)	4EA
7	803040358	1670RS TENSION KNOB STICKER	PC 0.4T*F44.5(IVORY)	4EA
8	803040515	TALON80 CIRCLE STICKER	F68*0.5T	1EA
9	802040347	TALON REWINDER STICKER-2	PC 0.3T 27*36	1EA
10	802040346	TALON REWINDER STICKER-1	PC 0.3T 27*36	1EA
11	704090103	POWER S/W ROCKER/PMS424U	621-X546100N-XMPI(GRAY)	2EA
12	630500364	TALON80 SIDE COVER(LOW/R)	SPC1.5T 717.6*619*130/TL80P210	1EA
A-1	703020233	E/M CONTROL PANEL	PC 122*177	1EA
A-2	705031114	LCD MODULE ASS'Y	UMS-3075	1EA
A-3	706011733	PCB ASS'Y TALON DISPLAY	UT00D	1EA
A-4	703020235	E/M CONTROL KEY	PC F16*14	5EA
A-5	703020252	E/M CONTROL KEY(사각)	PC 1.5T 24*18	3EA
A-6	802040344	CONTROL PANEL STICKER	PC 0.5T 164*109	1EA
A-7	703020235	E/M DIAL KNOB	PC F30*16.7	1EA

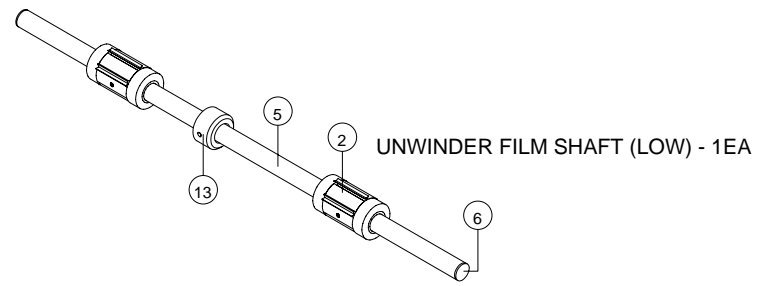
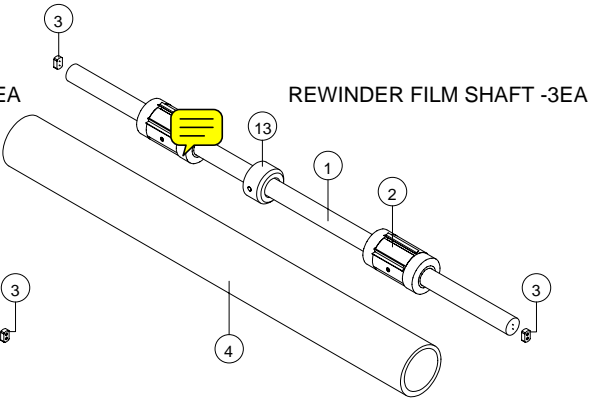
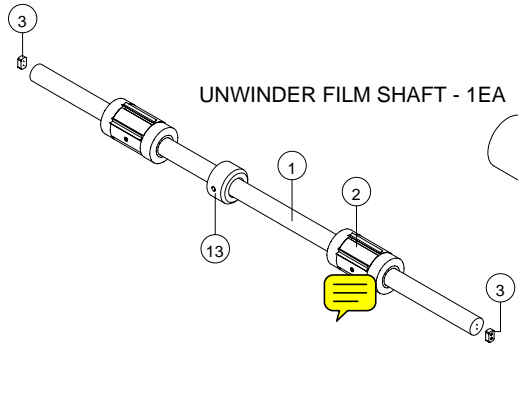
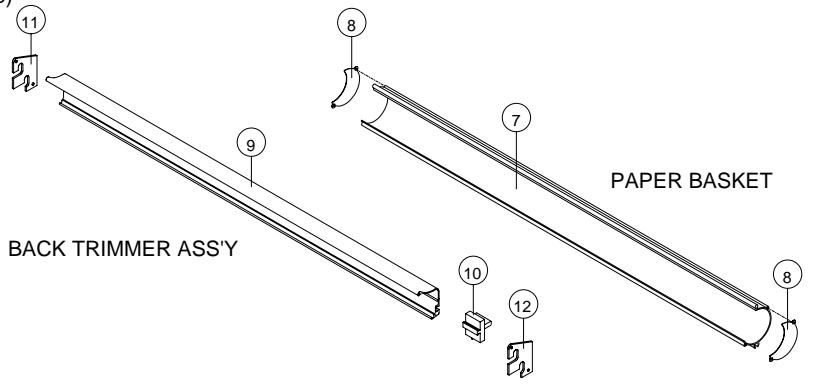
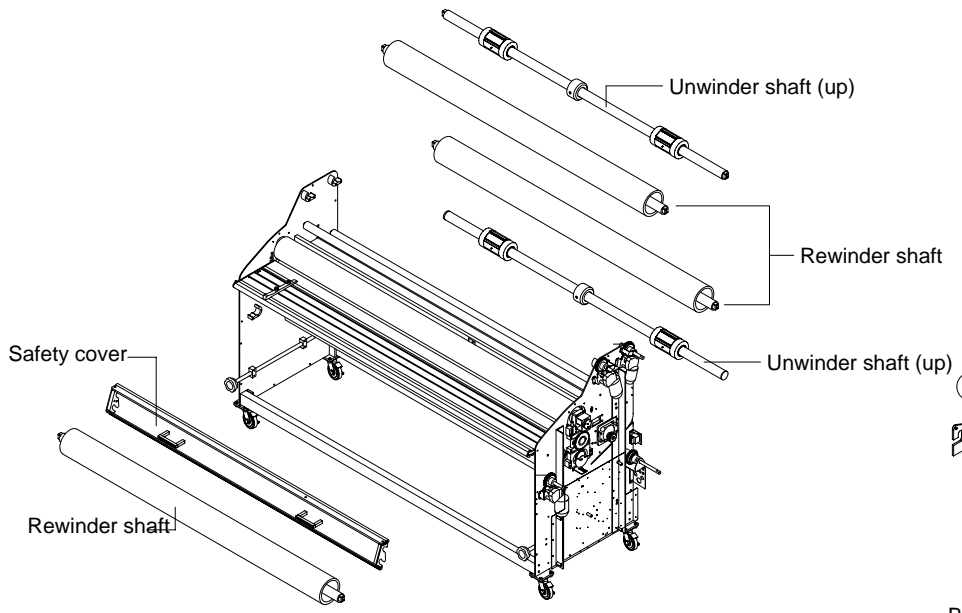


Control panel ass'y

UNLESS OTHERWISE SPECIFIED TOLERANCE				GBC Films Group			
DIM. AS SHOWN	TOL.	FINISH TO BE		4151 Anderson Road, DeForest, WI 53532			
X/X	±.1/64	125		TITLE : Display & Side Cover			
X	±.050	√		DATE :	DRAWN BY :	DWG SCALE :	DWG :
XX	±.010			12-28-05	NG		000-009
XXX	±.020		ANGLES ±1D				
XXXX	±.005						

PROPRIETARY
 GBC PRO-TECH CLAIMS PROPRIETARY RIGHTS TO THE MATERIAL DISCLOSED ON THIS DRAWING. IT IS ISSUED IN CONFIDENCE FOR ENGINEERING INFORMATION ONLY AND SHALL NOT BE REPRODUCED, COPIED OR DISCLOSED IN WHOLE OR IN PART, OR USED FOR MANUFACTURE OR FOR ANY OTHER PURPOSE WITHOUT WRITTEN PERMISSION FROM GBC PRO-TECH

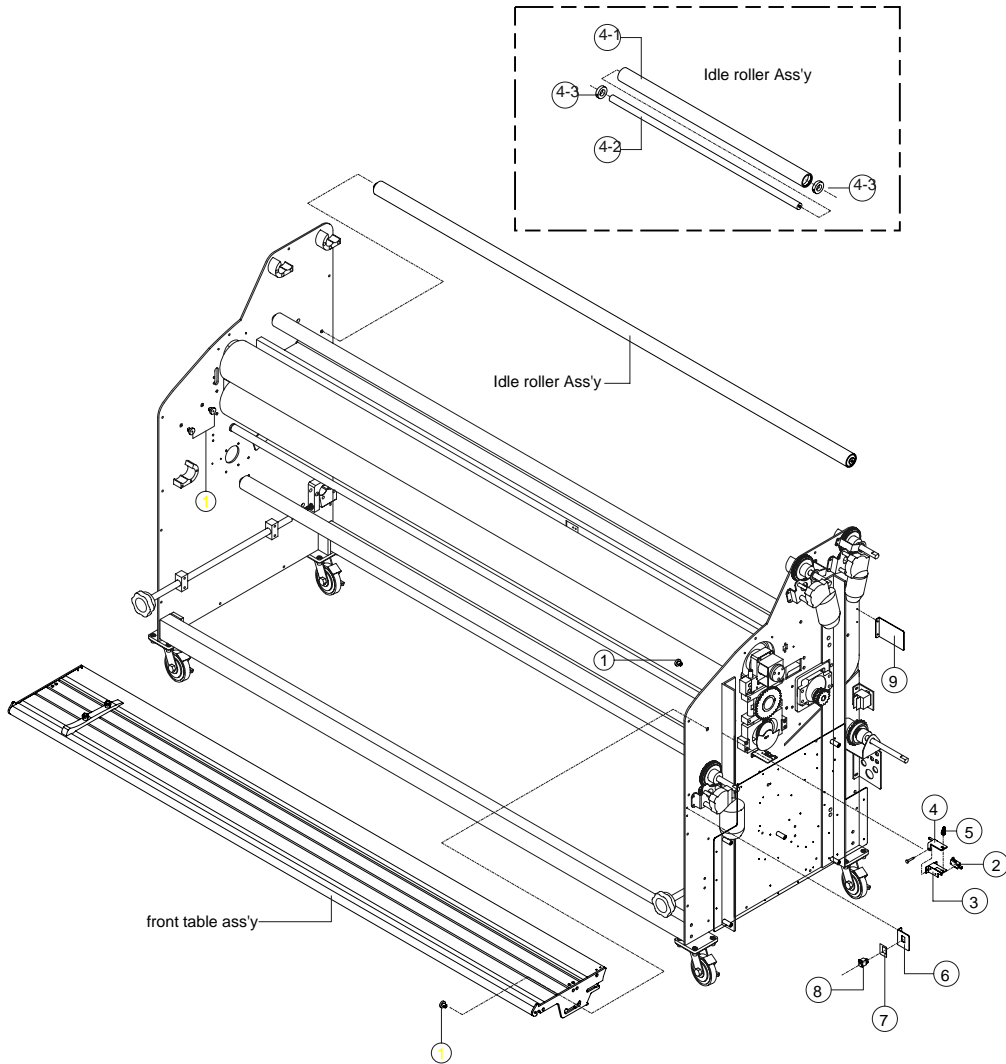
No.	Parts Code	Item	Spec	Quantity
1	613010515	TALON80 UNWINDER FILM SHAFT(UP)	STKM F34*2109*3T	4EA
2	639900124	3"34mm BD FILM CORE ASS'Y	3"34mm BD	10EA
3	632502292	T80 UNWINDER FILM SHAFT JOINT(UP)	S45C 34*19.5*11.5/TL80H191	8EA
4	640500029	START ROLL(77시관)	PER 75(25/50)*R2000*30m	3EA
5	613010514	TALON80 UNWINDER FILM SHAFT(Low)	STKM F34*2132*3T	1EA
6	632500490	TALON80 UNWINDER SHAFT CAP	MC F34*24(WHITE)	2EA
7	604036182	TALON80 PAPER BASKET	AL F106*2109	1EA
8	601220645	TALON PAPER BRACKET	SPC F106*1T(HH310-8H65 A-CY)	2EA
9	604036180	TALON80 BLADE RAIL	AL 70*51.2*2129	1EA
10	706111049	EAGLE BACK TRIMMER ASS'Y	EAGLE/DOLPHIN/DISCOVERY	1EA
11	601220653	TALON80 BLADE BRACKET(L)	SPC 3.0T 78.87*53	1EA
12	601220654	TALON80 BLADE BRACKET(R)	SPC 3.0T 78.87*53	1EA
13	613030756	TALON80 FILM SUPPORT	AL F75.7*F34.5*50	5EA



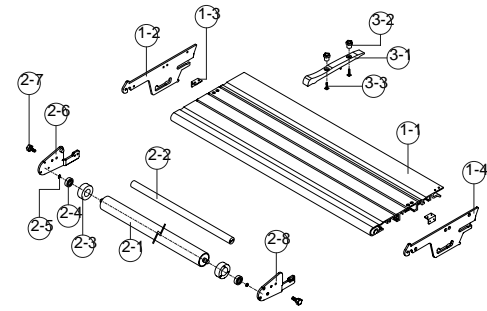
This print is the property of GBC Films Group. The information thereon is remitted in confidence.									
UNLESS OTHERWISE SPECIFIED TOLERANCE					GBC Films Group 4151 Anderson Road, DeForest, WI 53532				
DIM. AS SHOWN	TOL.	FINISH TO BE	TITLE: Rewind/Unwind Assembly						
X/X	±.1/64	125√							
X	±.050								
XX	±.010								
XXX	±.020	ANGLES	DATE: 12-28-05	DRAWN BY: NG	DWG SCALE: N/A	DWG: 000-008			
XXXX	±.005	±.1D							
ORIGINATOR: GMP	CHECKED BY: GBC FILMS GROUP	REVISION							

PROPRIETARY

GBC PRO-TECH CLAIMS PROPRIETARY RIGHTS TO THE MATERIAL DISCLOSED ON THIS DRAWING. IT IS ISSUED IN CONFIDENCE FOR ENGINEERING INFORMATION ONLY AND SHALL NOT BE REPRODUCED, COPIED OR DISCLOSED IN WHOLE OR IN PART, OR USED FOR MANUFACTURE OR FOR ANY OTHER PURPOSE WITHOUT WRITTEN PERMISSION FROM GBC PRO-TECH



No.	Parts Code	Item	Spec	Quantity
2	613030766	TALON FRONT TABLE PIN	F20*16	4EA
2	704090419	MICRO SWITCH	DECO VP531A-4D	1EA
3	601220642	TALON LIMIT BRACKET	SPC 21.9*43*54.8(Cr)	1EA
4	601220643	TALON LIMIT BUTTON	SPC 23.5*24*68.5(Cr)	1EA
5	701090158	COMPRESSION SPRING	0.8*35mm	1EA
6	601220647	TALON REWINDER PLATE	2.0T 53*46*15EX8816931166	1EA
7	802040348	TALON REWINDER STICKER-3	PC 0.3T 27*36	1EA
8	704090103	POWER S/W ROCKER/PMS424U	621-X546100N-XMPI(GRAY)	1EA
9	601220646	TALON80 REAR PANEL	SPC 2.0T 102*66*15	1EA
1-1	604036181	TALON80 FRONT TABLE	AL 6063 300*27*2129	1EA
1-2	630500367	TALON FRONT TABLE SUPPORT BRACKET	SPC 27*17.5*17.5(Cr)	1EA
1-3	601220633	TALON FRONT TABLE SUPPORT BRACKET	SPC 27*17.5*17.5(Cr)	2EA
1-4	630500368	TALON80 FRONT TABLE BRACKET(R)	SPC5.0T 100.2*287.51/TL80P180	1EA
2-1	632501921	TALON80 TABLE IDLE ROLLER(PL)	STKM4.5T F42.7*2135*2102/TL80H330	1EA
2-2	632501920	TALON80 TABLE IDLE ROLLER SUPPORT BAR	S45C F20*2130/TL80H340	4EA
2-3	632501956	TABLE IDLE ROLLER BEARING HOUSING	S45C F45*F25*17	2EA
2-4	701010152	BALL BEARING	#6000ZZ	2EA
2-5	701090705	SPRING S RING	10	2EA
2-6	630500378	TABLE IDLE ROLLER BRACKET (L)	SPC5.0T 153*68.5	1EA
2-7	634100196	5/16" KNOB BOLT	XFKB-M6-9LM(M6*9*F24)	2EA
2-8	630500379	TABLE IDLE ROLLER BRACKET (R)	SPC5.0T 153*68.5	1EA
3-1	633000176	230mm PAPER GUIDE(WHITE)	ABS 230*20*20(700-15779)	1EA
3-2	604022032	PAPER GUIDE KNOB	NYLON66 F19*20*M5	2EA
3-3	701108134	SQUARE HEAD M5	M5*20	2EA
4-1	613010167	TALON80 IDLE ROLLER(UP)	STKM F42.7*2127*3.6T	1EA
4-2	613010168	TALON80 IDLE SHAFT	SM45C F20*2142	1EA
4-3	701010111	BALL BEARING	# 6904	2EA

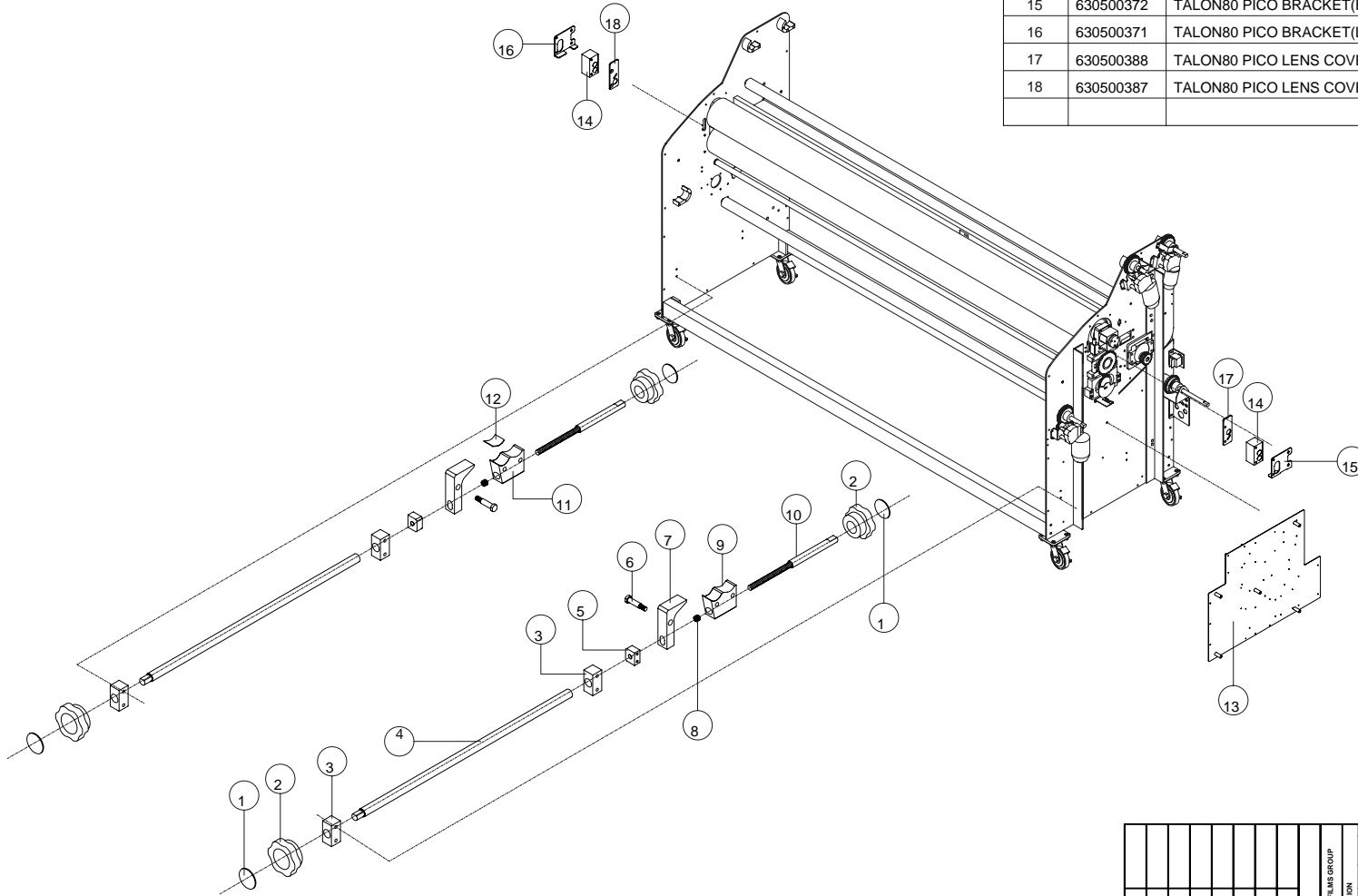


This print is the property of GBC Films Group. The information thereon is rendered in confidence.			
GBC Films Group 4151 Anderson Road, DeForest, WI 53532			TITLE :
Table Assembly			DATE :
DRAWN BY :			DWG SCALE :
ORIGINATOR: OMP			DWG :
CHECKED BY: GBC FILMS GROUP			000-007
UNLESS OTHERWISE SPECIFIED TOLERANCE		FINISH TO BE	
DM. AS SHOWN	TOL.	125	
XX	±.154	√	
X	±.050		
XX	±.015		
XXX	±.020	ANGLES	
XXXX	±.005	L10	

PROPRIETARY

GBC PRO-TECH CLAIMS PROPRIETARY RIGHTS TO THE MATERIAL DISCLOSED ON THIS DRAWING. IT IS ISSUED IN CONFIDENCE FOR ENGINEERING INFORMATION ONLY AND SHALL NOT BE REPRODUCED, COPIED OR DISCLOSED IN WHOLE OR IN PART, OR USED FOR MANUFACTURE OR FOR ANY OTHER PURPOSE WITHOUT WRITTEN PERMISSION FROM GBC PRO-TECH

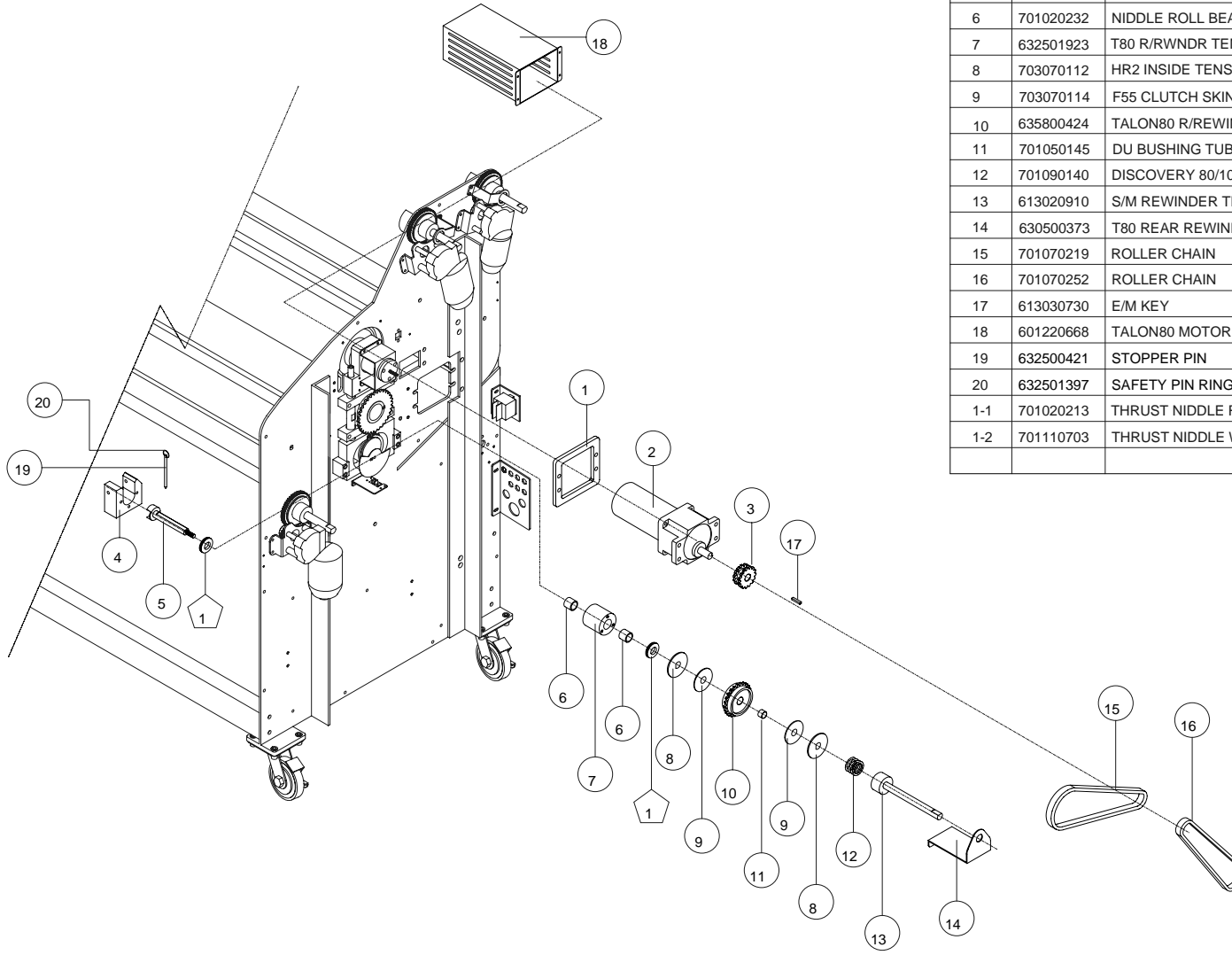
No.	Parts Code	Item	Spec	Quantity
1	803040358	1670RS TENSION KNOB STICKER	PC 0.4T*F44.5(IVORY)	4EA
2	604020323	1670RS TENSION HANDLE	PC F75*F15*30(GRAY)	4EA
3	632501915	T80 UNWINDER TENSION AD SHAFT BLOCK	MC(BLACK) 25*25*50 TL80H320	4EA
4	632501914	T80 UNWINDER TENSION AD SHAFT-FRONT	S45C F18*600/TL80H310	2EA
5	632501913	TALON80 BREAK SUPPORT	S45C 25*30*15*M10/TL80H290	2EA
6	613030751	TALON80 BREAK PIN	S45C F15*52	2EA
7	613030750	TALON80 BREAK HINGE	MC 55*92*25(BLACK)	2EA
8	701090203	BREAK TENSION SPRING	2.0T*F13*18MM	2EA
9	613030749	TALON80 BREAK BASE(R)	MC 70*52*25(BLACK)	1EA
10	632501912	T80 UNWINDER TENSION AD SHAFT-REAR	S45C F15*240*M10/TL80H300	2EA
11	613030748	TALON80 BREAK BASE(L)	MC 70*52*25(BLACK)	1EA
12	703070371	BREAK SKIN	SKIN 1.0T 30*23	2EA
13	630560380	TALON PCB PALTE	SPC 1.5T	1EA
14	632502291	TALON80 PICO BLOCK	BACKLITE 23.5*45*25/TL80H282	2EA
15	630500372	TALON80 PICO BRACKET(R)	SPC1.5T 55*47*11.5/TL80P231	1EA
16	630500371	TALON80 PICO BRACKET(L)	SPC1.5T 55*47*11.5/TL80P231	1EA
17	630500388	TALON80 PICO LENS COVER(R)	SPC2.0T 23.5*63(BLK)/TL80P270	1EA
18	630500387	TALON80 PICO LENS COVER(L)	SPC2.0T 23.5*63(BLK)/TL80P270	1EA



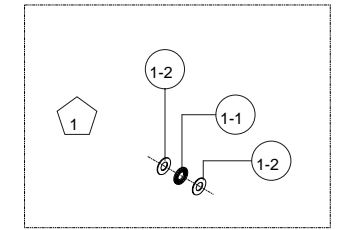
This print is the property of GBC Films Group. The information thereon is reprinted in confidence.			
GBC Films Group 4151 Anderson Road, DeForest, WI 53532			TITLE : Lower Tension Assembly
DATE : 12-28-05 DRAWN BY : NG DWG SCALE : N/A DWG : 000-006			
UNLESS OTHERWISE SPECIFIED TOLERANCE	TOL.	FINISH TO BE	ANGLES
DM AS SHOWN	±.154	125	±.10
XX	±.050	✓	
X	±.015		
XX	±.015		
XXX	±.020		
XXXX	±.005		

PROPRIETARY

GBC PRO-TECH CLAIMS PROPRIETARY RIGHTS TO THE MATERIAL DISCLOSED ON THIS DRAWING. IT IS ISSUED IN CONFIDENCE FOR ENGINEERING INFORMATION ONLY AND SHALL NOT BE REPRODUCED, COPIED OR DISCLOSED IN WHOLE OR IN PART, OR USED FOR MANUFACTURE OR FOR ANY OTHER PURPOSE WITHOUT WRITTEN PERMISSION FROM GBC PRO-TECH



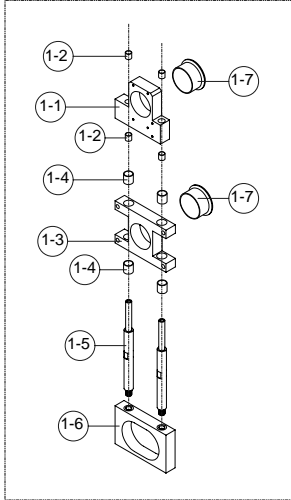
No.	Parts Code	Item	Spec	Quantity
1	630500369	TALON80 MOTOR SPACER	SPC8.0T 130*119/TL80P200	1EA
2	635000035	DC GEARED MOTOR	200W/36V/3000RPM(OA26 100:1)	1EA
3	635800422	STEEL CHAIN GEAR(RS#35)	14T*15T*F15(T80 MOTOR)/TL80G040	1EA
4	613030767	TALON80 UNWINDER STOPPER(L)	MC 70*75*35(BLACK)/TL80H202	1EA
5	632501924	TALON80 R/REWINDER TENSION BOLT	S45C F30*129*M8/TL80H270	1EA
6	701020232	NIDDLE ROLL BEARING	NK15/16A	2EA
7	632501923	T80 R/RWNRD TENSION BOLT HOUSING	S45C F50*48.5/TL80H260	1EA
8	703070112	HR2 INSIDE TENSION DISK	3.0T*F56	2EA
9	703070114	F55 CLUTCH SKIN PAD	SKIN 2.0T*F15*F55	2EA
10	635800424	TALON80 R/REWINDER SPROCKET(RS#35)	24T*F65*25*F17/TL80G010	1EA
11	701050145	DU BUSHING TUBE	15x15	1EA
12	701090140	DISCOVERY 80/100S SPRING	4.5T*F26.5*24.5	1EA
13	613020910	S/M REWINDER TENSION BLOCK	S45C F15*F35*77.5	1EA
14	630500373	T80 REAR REWINDER T/BLOCK STOPPER	SPC2.0T 70*85*115/TL00P170	1EA
15	701070219	ROLLER CHAIN	RS35H(36PCS)	1EA
16	701070252	ROLLER CHAIN	RS35H(35.5PCS)	1EA
17	613030730	E/M KEY	5*5*15mm	1EA
18	601220668	TALON80 MOTOR COVER	SPC 108*140*285	1EA
19	632500421	STOPPER PIN	S45C F6*95	1EA
20	632501397	SAFETY PIN RING	F21.5	1EA
1-1	701020213	THRUST NIDDLE ROLL BEARING	AXK1528	2EA
1-2	701110703	THRUST NIDDLE WASHER	AS1528	4EA



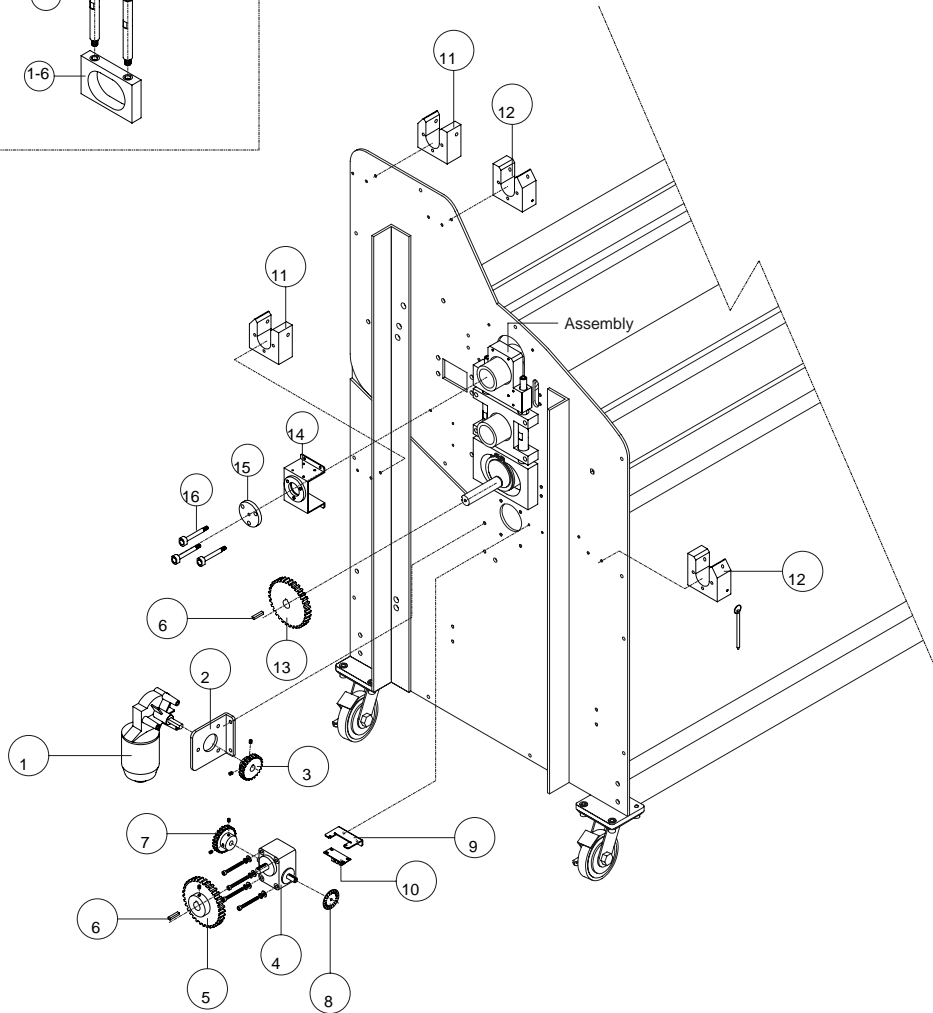
This print is the property of GBC Films Group. The information thereon is reprinted in confidence.			
UNLESS OTHERWISE SPECIFIED TOLERANCE			GBC Films Group 4151 Anderson Road, DeForest, WI 53532 Motor Drive Assembly
DM. AS SHOWN	TOL.	FINISH TO BE	
XX	±.154	125 √	
X	±.050		
XX	±.015		
XXX	±.020	ANGLES ±.10°	
XXXX	±.005		
ORIGINATOR: OMP CHECKED BY: GBC FILMS GROUP REVISION			DATE: 12-28-05 DRAWN BY: NG DWG SCALE: N/A DWG: 000-005

PROPRIETARY

GBC PRO-TECH CLAIMS PROPRIETARY RIGHTS TO THE MATERIAL DISCLOSED ON THIS DRAWING. IT IS ISSUED IN CONFIDENCE FOR ENGINEERING INFORMATION ONLY AND SHALL NOT BE REPRODUCED, COPIED OR DISCLOSED IN WHOLE OR IN PART, OR USED FOR MANUFACTURE OR FOR ANY OTHER PURPOSE WITHOUT WRITTEN PERMISSION FROM GBC PRO-TECH



Heat Roller Bearing Part Assembly

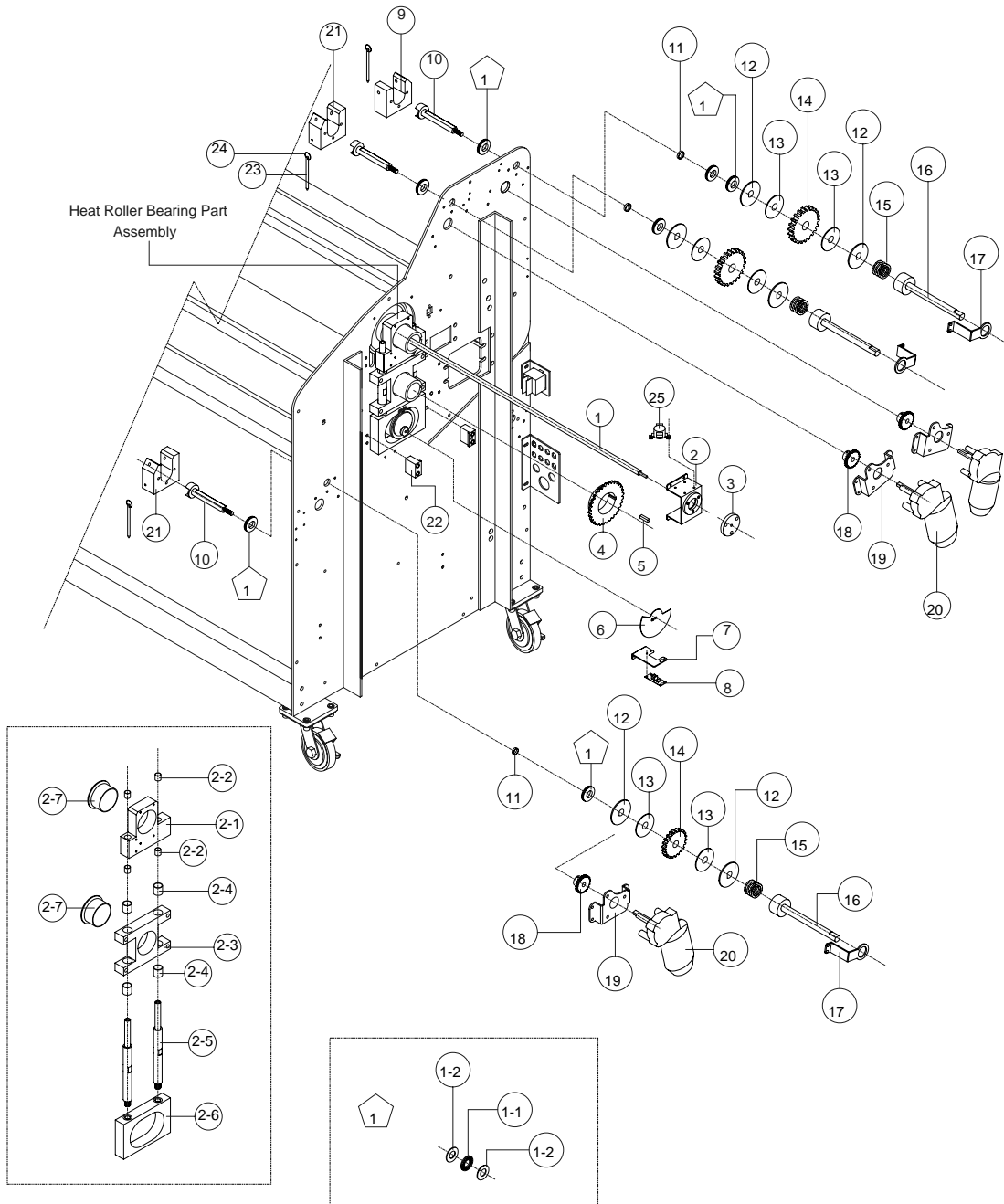


No.	Parts Code	Item	Spec	Quantity
1	635000002	DC GEARED MOTOR(DM010)	DC 36V 11W	1EA
2	630500041	E/M MOTOR BRACKET(DM010)	SPC 5.0T*86*63*23	1EA
3	701080185	STEEL SPUR GEAR	36T*F10 (E/M MOTOR/DM010)	1EA
4	703070318	SSJ REDUCER(JAGUAR-700)	1/20	1EA
5	701080199	STEEL SPUR GEAR	46T*F17*25(JACK SCREW)	1EA
6	613030730	E/M KEY	5*5*15mm	2EA
7	701080186	STEEL SPUR GEAR	32T*F12*20 (E/M JACK SCREW)	1EA
8	703070119	1620PQ INTERRUPT SENSING DISK	100P/R F50*F5.5	1EA
9	630500376	E/M PHOTO SENSOR BRACKET	SPC2.0T 60*14(BK451)/EM00P361	1EA
10	638900266	PCB ASS'Y JAGUAR700 SENSING	JA700PI	1EA
11	613030768	TALON80 UNWINDER STOPPER(R)	MC 70*75*35(BLACK)/TL80H202	2EA
12	613030767	TALON80 UNWINDER STOPPER(L)	MC 70*75*35(BLACK)/TL80H202	2EA
13	701080140	STEEL SPUR GEAR	50T*F20(CAM)	1EA
14	630500370	TALON80 HEATER SUPPORT	SPC2.0T 60*91*44/TL80P190	1EA
15	632501919	TALON80 HEATER HOLDER	TEFLON(WHITE) F50*F5.2*15/TL80H350	1EA
16	632501918	TALON80 HEATER HOLDER GUIDE BOLT	S45C F7*65*M6/TL80H360	3EA
17	632500421	STOPPER PIN	S45C F6*95	4EA
18	632501397	SAFETY PIN RING	F21.5	4EA
1-1	632501922	TALON80 H/R BEARING HOUSING(UP)	S45C 91*107.5*25/TL80H230	1EA
1-2	635500157	DU BUSHING TUBE	12*10	4EA
1-3	632501910	TALON80 H/R BEARING HOUSING(LOW)	S45C 140*100*26/TL80H220	1EA
1-4	635500167	DU BUSHING TUBE	18*20	4EA
1-5	632501916	TALON80 GUIDE SHAFT	S45C F18*222/TL80H240	2EA
1-6	632501909	TALON80 CAM BLOCK	S45C 140*90*25/TL80H210	1EA
1-7	635500168	DU BUSHING FLANGE	50*25	2EA

This print is the property of GBC Films Group. The information thereon is reprinted in confidence.			
UNLESS OTHERWISE SPECIFIED TOLERANCE		GBC Films Group 4151 Anderson Road, DeForest, WI 53532	
DIM. AS SHOWN	TOL.	TITLE : Lifting Mechanism	
XXX	±.1/64	DATE :	DRAWN BY :
X	±.050	10/09/05	NG
XX	±.010	DWG SCALE :	N/A
XXX	±.020	DWG :	000-004
XXXX	±.005	ANGLES ±.10	

PROPRIETARY

GBC PRO-TECH CLAIMS PROPRIETARY RIGHTS TO THE MATERIAL DISCLOSED ON THIS DRAWING. IT IS ISSUED IN CONFIDENCE FOR ENGINEERING INFORMATION ONLY AND SHALL NOT BE REPRODUCED, COPIED OR DISCLOSED IN WHOLE OR IN PART, OR USED FOR MANUFACTURE OR FOR ANY OTHER PURPOSE WITHOUT WRITTEN PERMISSION FROM GBC PRO-TECH

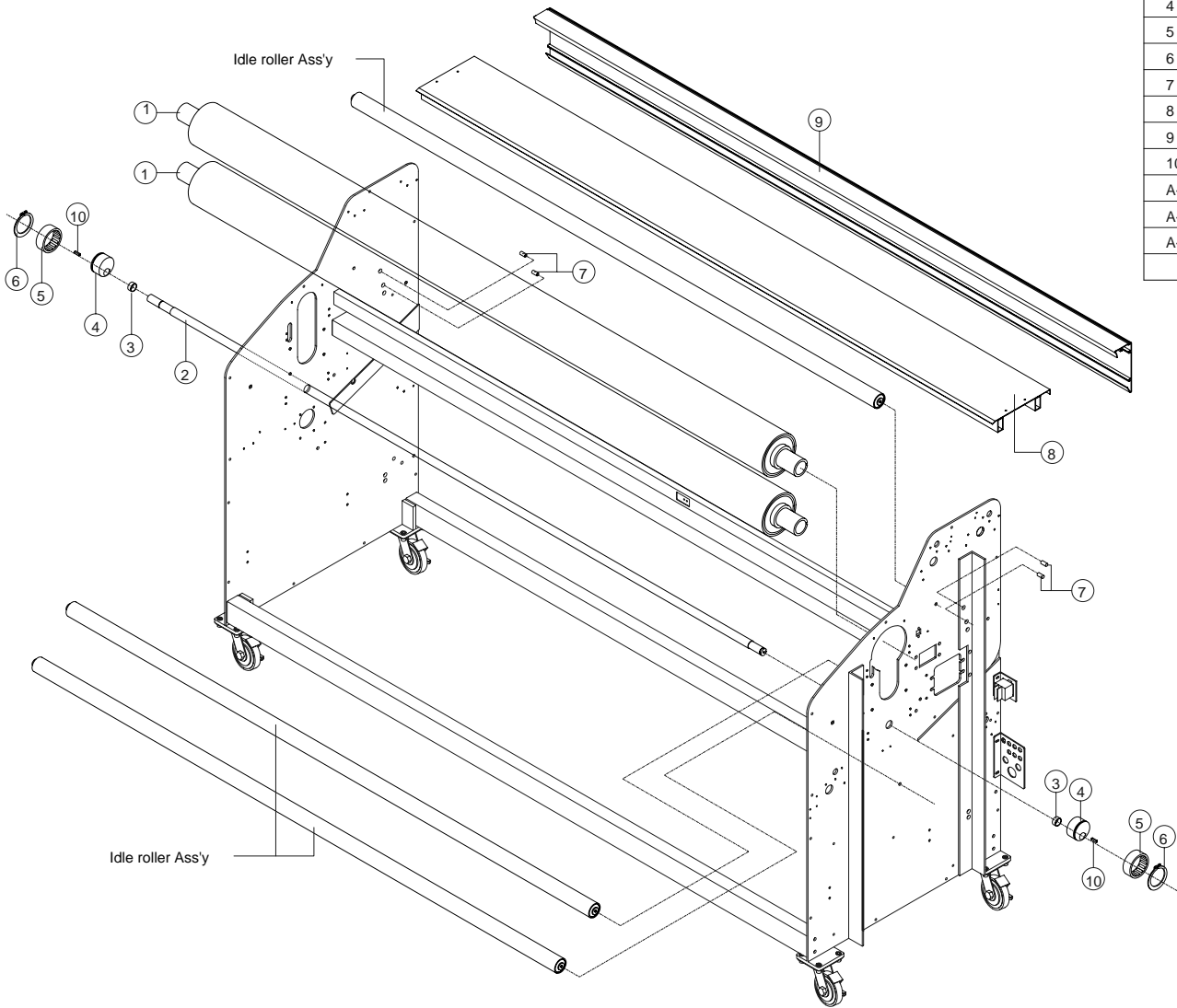


No.	Parts Code	Item	Spec	Quantity
1	637200008	TALON80 SHEATHED HEATER	F12*2302*M5*2343	1EA
2	630500370	TALON80 HEATER SUPPORT	SPC2.0T 60*91*44/TL80P190	1EA
3	632501919	TALON80 HEATER HOLDER	TEFLON(WHITE) F50*F5.2*15/TL80H350	1EA
4	635800423	H/ROLLER SPROCKET(RS#35)	32T*F50*20(6*6KEY)/TL80G012	1EA
5	613020772	KEY	S45C 6*6*15	1EA
6	601220650	TALON80 SENSOR PLATE	SUS 1.0T*F119	1EA
7	630500377	E/M PHOTO S/B(SENSOR PLATE)	SPC2.0T 67*40(BK451)/EM00P371	1EA
8	638900266	PCB ASS'Y JAGUAR700 SENSING	JA700PI	1EA
9	613030767	TALON80 UNWINDER STOPPER(L)	MC 70*75*35(BLACK)/TL80H202	1EA
10	613030769	UNWINDER TENSION BOLT	SM45C F30*F15*76	3EA
11	705050183	DU BUSHING TUBE	15*04	3EA
12	703070112	HR2 INSIDE TENSION DISK	3.0T*F56	6EA
13	703070114	F55 CLUTCH SKIN PAD	SKIN 2.0T*F15*F55	6EA
14	701080184	STEEL SPUR GEAR	72T*F17(E/M TOP REWINDER)	3EA
15	701090140	DISCOVERY 80/100S SPRING	4.5T*F26.5*24.5	3EA
16	613030721	E/M FILM TENSION BLOCK	S45C 35*15*95	2EA
17	601220648	TALON REWINDER STOPPER	SPC 3.0T 76*40(BK451)	3EA
18	701080183	STEEL SPUR GEAR	30T*F10(E/M TOP REWINDER MOTOR)	3EA
19	601220538	E/M MOTOR BRACKET(REWINDER)	SPC 3.0T 116*75	3EA
20	613030768	DC GEARED MOTOR(DM010)	DC 36V 11W	3EA
21	613030768	TALON80 UNWINDER STOPPER(R)	MC 70*75*35(BLACK)/TL80H202	2EA
22	632501917	TALON80 GUIDE BLOCK	MC 30*35*18/TL80H250	2EA
23	632500421	STOPPER PIN	S45C F6*95	3EA
24	632501397	SAFETY PIN RING	F21.5	3EA
25	704150111	BI-METAL THERMOSTAT	60T21 (250V15A 120°C)	1EA
1-1	701020231	THRUST NIDDLE ROLL BEARING	AXK1528	6EA
1-2	701110703	THRUST NIDDLE WASHER	AS1528	12EA
2-1	632501922	H/R BEARING HOUSING(UP)	S45C 91*107.5*25/TL80H230	1EA
2-2	635500157	DU BUSHING TUBE	12*10	4EA
2-3	632501910	H/R BEARING HOUSING(LOW)	S45C 140*100*26/TL80H220	1EA
2-4	635500167	DU BUSHING TUBE	18*20	4EA
2-5	632501916	TALON80 GUIDE SHAFT	S45C F18*222/TL80H240	2EA
2-6	632501909	TALON80 CAM BLOCK	S45C 140*90*25/TL80H210	1EA
2-7	635500168	DU BUSHING FLANGE	50*25	2EA

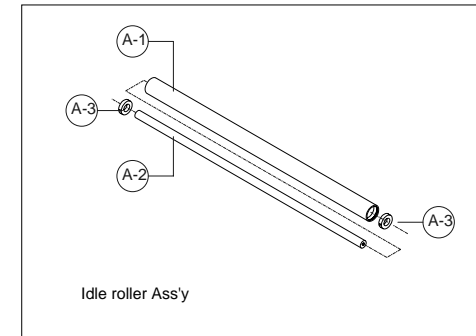
UNLESS OTHERWISE SPECIFIED TOLERANCE DIM AS SHOWN TOL. FINISH TO BE XX ±.154 X ±.050 XX ±.010 XXX ±.020 XXXX ±.005				125 ✓		GBC Films Group 4151 Anderson Road, DeForest, WI 53532	
TITLE: Motor & Gear Assembly				DATE:	DRAWN BY:	DWG SCALE:	DWG NO.:
				10/09/05	NG	N/A	000-003

PROPRIETARY

GBC PRO-TECH CLAIMS PROPRIETARY RIGHTS TO THE MATERIAL DISCLOSED ON THIS DRAWING. IT IS ISSUED IN CONFIDENCE FOR ENGINEERING INFORMATION ONLY AND SHALL NOT BE REPRODUCED, COPIED OR DISCLOSED IN WHOLE OR IN PART, OR USED FOR MANUFACTURE OR FOR ANY OTHER PURPOSE WITHOUT WRITTEN PERMISSION FROM GBC PRO-TECH.



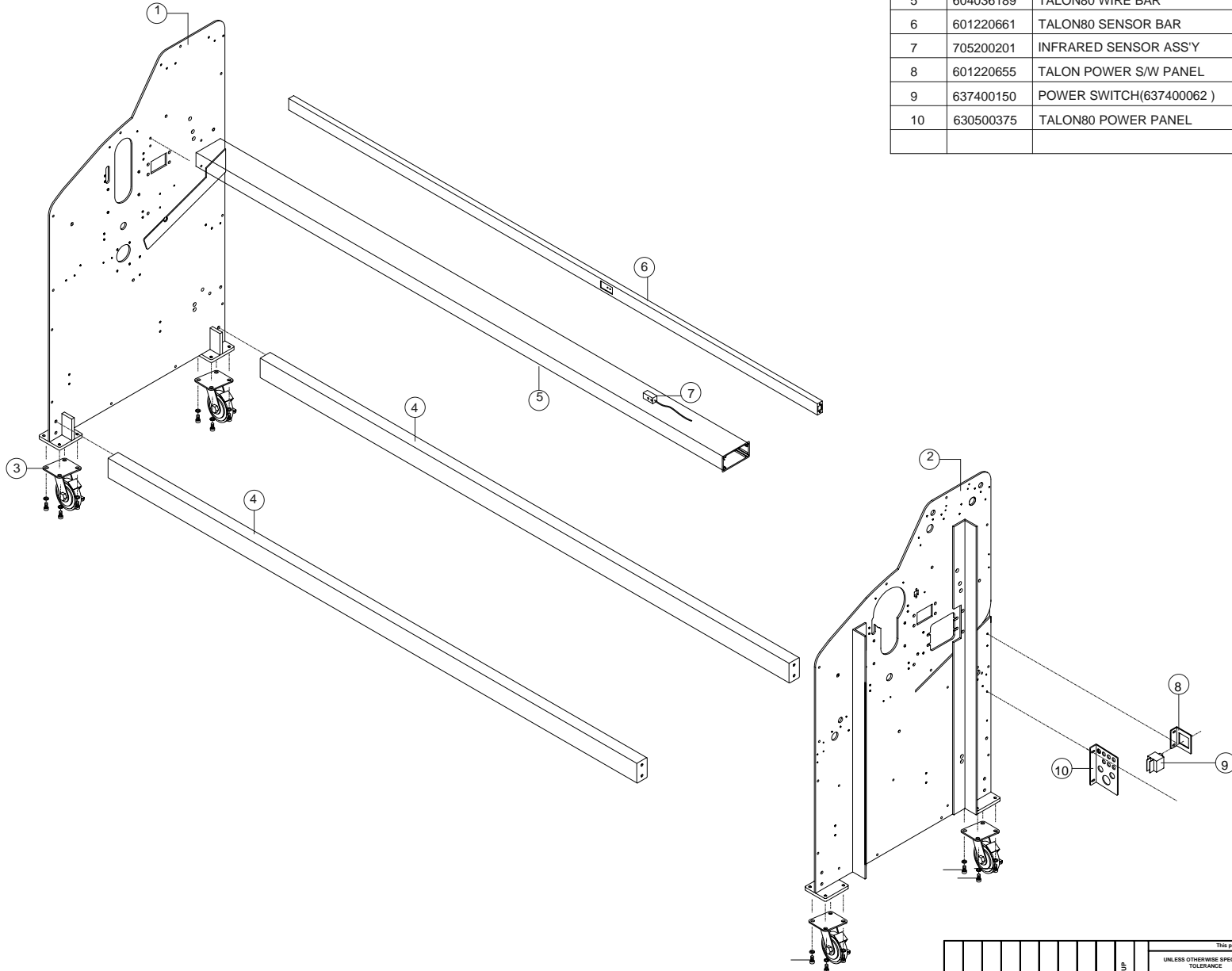
No.	Parts Code	Item	Spec	Quantity
1	631800384	TALON80 HEAT ROLLER	2276*F125*2116 (601-45 RED)	2EA
2	632501911	TALON80 CAM SHAFT	S45C F22*F20*2264/TL80H053	1EA
3	701050153	DU BUSHING TUBE	20x10	2EA
4	613030754	TALON80 CAM	SM45C F55*30*M6	2EA
5	701020254	MIDDLE ROLL BEARING	NK5525A	2EA
6	701090720	SPRING S RING	55	2EA
7	613030541	GBC4265 알관결어지저편(PL)	SM45C F10*20	4EA
8	601220629	TALON80 FILM GUIDE	SPC1.5+SPSR 203.5*2140	1EA
9	604036186	TALON80 REAR COVER	AL 2.0T 65.6*2140.5	1EA
10	613030730	E/M KEY	5*5*15mm	2EA
A-1	613010167	TALON80 IDLE ROLLER(UP)	STKM F42.7*2127*3.6T	3EA
A-2	613010168	TALON80 IDLE SHAFT	SM45C F20*2142	3EA
A-3	701010111	BALL BEARING	# 6904	6EA



This print is the property of GBC Films Group. The information thereon is limited in confidence.									
				UNLESS OTHERWISE SPECIFIED TOLERANCE		GBC Films Group 4151 Anderson Road, DeForest, WI 53532			
DIM. AS SHOWN		TOL.		FINISH TO BE		TITLE : Roller Assembly			
XX		±.184		12.5					
X		±.050		√					
XX		±.010							
XXX		±.009		ANGLES					
XXXX		±.005		±.10		DATE: 12-28-05		DRAWN BY: NG	
						DWG SCALE: N/A		DWG: 000-002	

PROPRIETARY

GBC PRO-TECH CLAIMS PROPRIETARY RIGHTS TO THE MATERIAL DISCLOSED ON THIS DRAWING. IT IS ISSUED IN CONFIDENCE FOR ENGINEERING INFORMATION ONLY AND SHALL NOT BE REPRODUCED, COPIED OR DISCLOSED IN WHOLE OR IN PART, OR USED FOR MANUFACTURE OR FOR ANY OTHER PURPOSE WITHOUT WRITTEN PERMISSION FROM GBC PRO-TECH

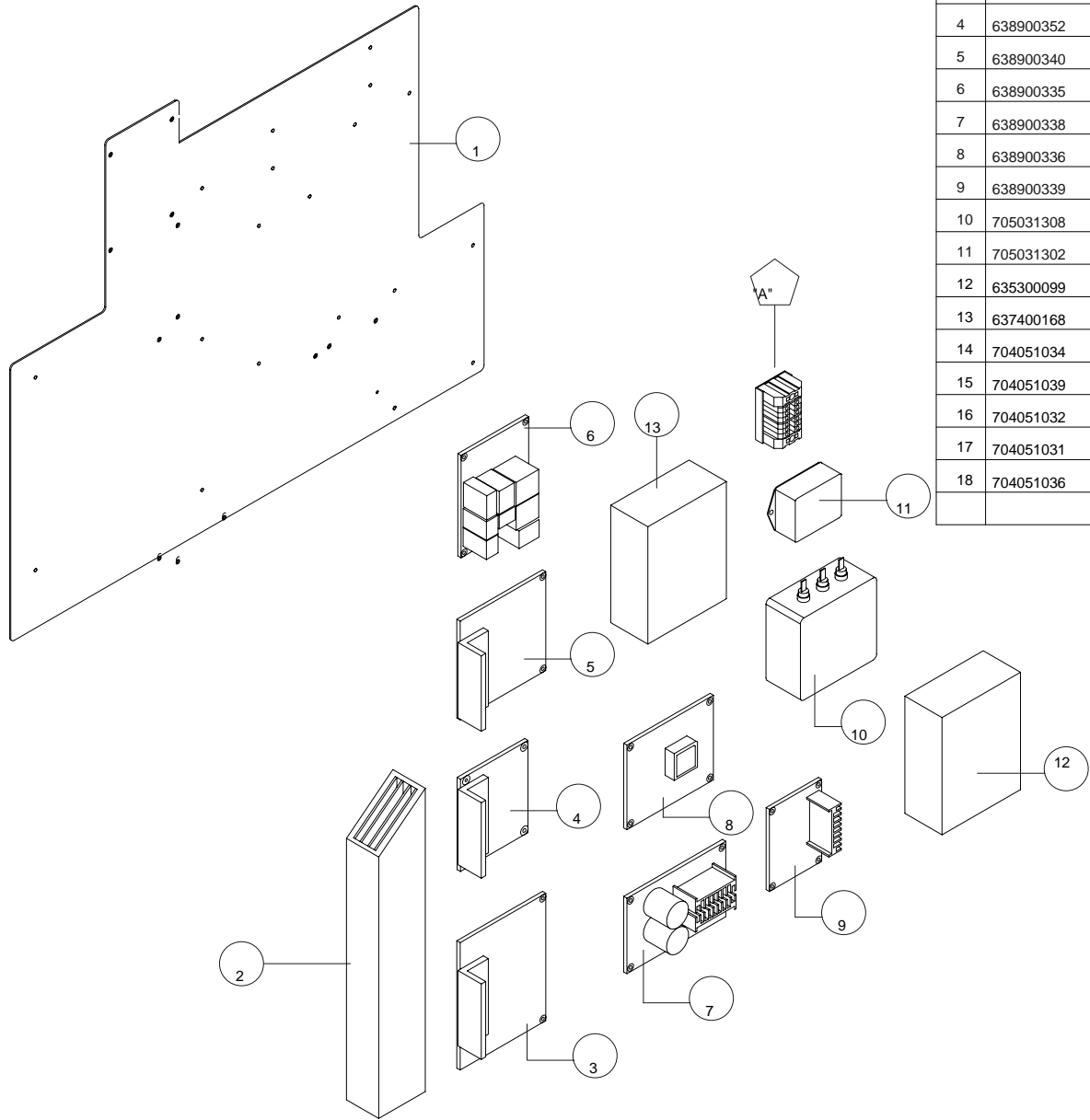


No.	Parts Code	Item	Spec	Quantity
1	630500365	TALON80 SIDE PLATE(L)	SPC 5.0T 1138*710	1EA
2	630500366	TALON80 SIDE PLATE(R)	SPC 5.0T 1138*710	1EA
3	701130503	CASTER (우레탄바퀴)	4"/BRAKE	4EA
4	601220659	TALON80 CROSS BAR	SPSR 2.3T 2142*45*75	2EA
5	604036189	TALON80 WIRE BAR	AL 50*100*2142	1EA
6	601220661	TALON80 SENSOR BAR	SPC 2.0T 38*2141.5	1EA
7	705200201	INFRARED SENSOR ASS'Y	TPML1-710	1EA
8	601220655	TALON POWER S/W PANEL	SPC 3.0T 80.1*64	1EA
9	637400150	POWER SWITCH(637400062)	MD2-B-24-620-2-A14-2-E	1EA
10	630500375	TALON80 POWER PANEL	SPC 3.0T 110*131.5	1EA

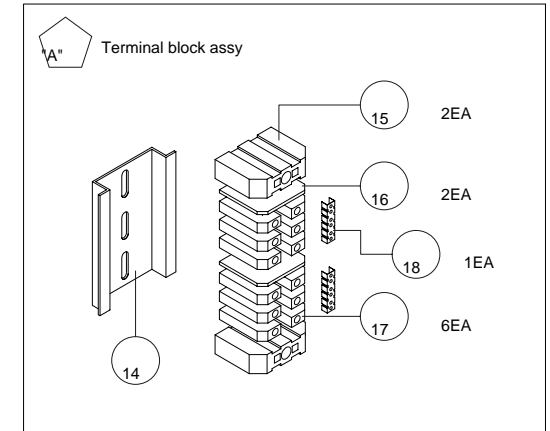
This print is the property of GBC Films Group. The information thereon is reprinted in confidence.				
GBC Films Group			4151 Anderson Road, DeForest, WI 53532	
TITLE : Side Frame Assembly				
DATE : 12-28-05		DRAWN BY : NG	DWG SCALE : N/A	DWG : 000-001

PROPRIETARY

GBC PRO-TECH CLAIMS PROPRIETARY RIGHTS TO THE MATERIAL DISCLOSED ON THIS DRAWING. IT IS ISSUED IN CONFIDENCE FOR ENGINEERING INFORMATION ONLY AND SHALL NOT BE REPRODUCED, COPIED OR DISCLOSED IN WHOLE OR IN PART, OR USED FOR MANUFACTURE OR FOR ANY OTHER PURPOSE WITHOUT WRITTEN PERMISSION FROM GBC PRO-TECH



	PART CODE	PART NAME	SPEC.	Quantity
1	630500380	TALON80 PCB PLATE	SPC2.0T 652*532.5(BK451)/TL80P241	1EA
2	638800049	AL HEAT SINK(TALON80)	AL 331.7*64*64/TL80I050	1EA
3	638900337	PCB ASS'Y TALON80 MOTOR DRIVE	TL80PRS REV1.0	1EA
4	638900352	PCB ASS'Y TALON80 POWER SUPPLY3	TL80PS3 REV1.0	1EA
5	638900340	PCB ASS'Y TALON80 MAIN MOTOR DRIVE	TL80LAMI REV1.0	1EA
6	638900335	PCB ASS'Y TALON80 PICO RELAY MODUL	PICO-RL REV1.2	1EA
7	638900338	PCB ASS'Y TALON80 POWER SUPPLY1	TL80PS REV1.0	1EA
8	638900336	PCB ASS'Y TALON80 MAIN(PICO SYSTEM)	TL80M REV1.0(PICO SYSTEM)	1EA
9	638900339	PCB ASS'Y TALON80 POWER SUPPLY2	TL80PS2 REV1.0	1EA
10	705031308	FERRITE EMI FILTER	ES1-T30/30A	1EA
11	705031302	FERRITE EMI FILTER	ES1-F15/15A	1EA
12	635300099	TRANSFORMER GM300JA	230V/50,12A	1EA
13	637400168	PICO GUARD FIBER OPTIC SAFETY SYSTEM	SFCDT-4A1(SFCDT-4A1C)	1EA
14	704051034	TERMINAL BLOCK RAIL	NS 35/7.5	1EA
15	704051039	TERMINAL BLOCK USLKG5	T/B	2EA
16	704051032	TERMINAL BLOCK END COVER	D-UK 4/10	2EA
17	704051031	TERMINAL BLOCK UK5N	T/B	6EA
18	704051036	TERMINAL BLOCK BRIDGE BAR	FB 10-6	1EA



UNLESS OTHERWISE SPECIFIED TOLERANCE				GBC Films Group 4151 Anderson Road, DeForest, WI 53532			
DWG AS SHOWN	TOL.	FINISH TO BE	TITLE :		DATE :	DRAWN BY :	DWG SCALE :
XX	±.184	125	Electrical Components		10/09/05	NG	N/A
X	±.050	125					
XX	±.010						
XXX	±.020	ANGLES ±.10					
XXXX	±.005						000-010

TECHNICAL SERVICE & SUPPORT BULLETIN

T.S.S.B. NO. **1015H**

DATE: 11/13/07

MODEL: **2064WFt, 2080WFt, 3064WFt AND 4064WFt**SUBJECT: **PICO FIBER OPTIC CABLE COUPLER**

PAGE: 1 of 1

When you encounter a fiber optic cable that has been damaged, we have a very quick and inexpensive way to repair the fiber optic cables related to all PICO guards. A fiber optic cable coupler is now available. The coupler can be ordered using alpha part number **SFAFA**.



TECHNICAL SERVICE & SUPPORT BULLETIN

T.S.S.B. NO. 1015K

DATE: 06/27/08

MODEL: All Laminators with Banner SFCDT-4A1CM1 Pico Guard

Mike Taylor

SUBJECT: Pico Guard Muting Behavior

PAGE: 1



This info will bring clarification that will be useful when troubleshooting Pico muting behavior in Laminators with one SFCDT-4A1CM1 Pico Guard module **and** sensor beams in both the front and back of the machine.

When the Laminator is powered on, the Pico module will sense what direction the laminator is set for and will determine which sensor beam to pay attention to and which to “mute” or disregard. An example - if the 4064 is powered on in forward mode, the Pico will determine to monitor the beam at the front of the machine and mute or disregard its attention to the beam across the back rollers.

However, if the beam across the back rollers happens to be blocked at the moment the machine is powered on, the Pico will think that beam is also being used and will refuse to mute it. An example – the 4064 is powered on in forward mode and the film tail sticking out the back happens to be curled up and is blocking the rear beam. The Pico will decide to actively pay attention to both front and back beams. This poses no safety hazard but can create an aggravation for the operator because if the film bumps up and blocks the rear beam as it is exiting the back rollers the 4064 will stop the same as if the beam was blocked or broken across the front rollers.

To avoid this condition use the following tips.

- * Do not set tools used for trimming in the back of the machine where they could block the rear beam the next time the machine is turned on.
- * Adjust the film brakes to achieve the flattest possible web