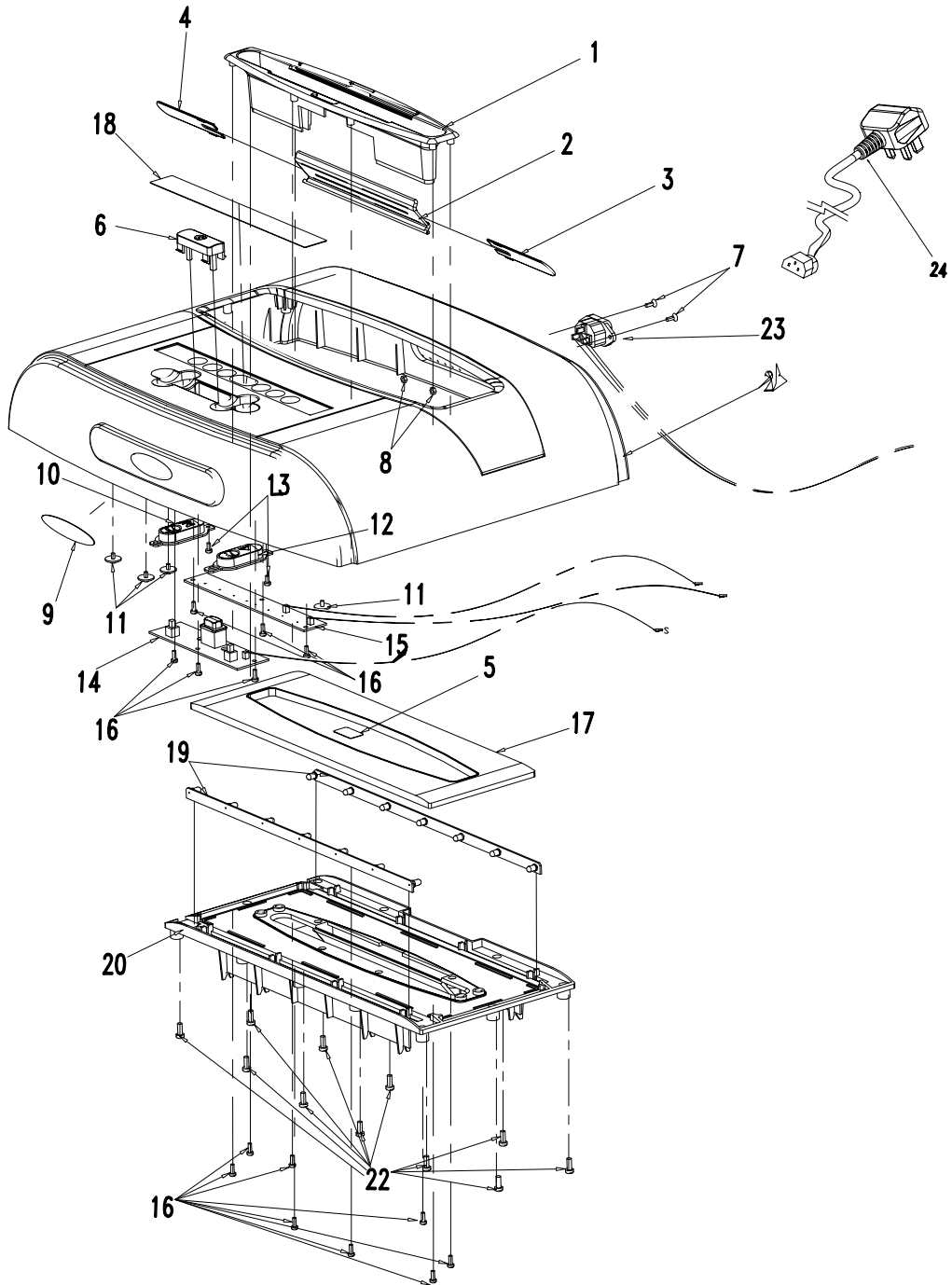




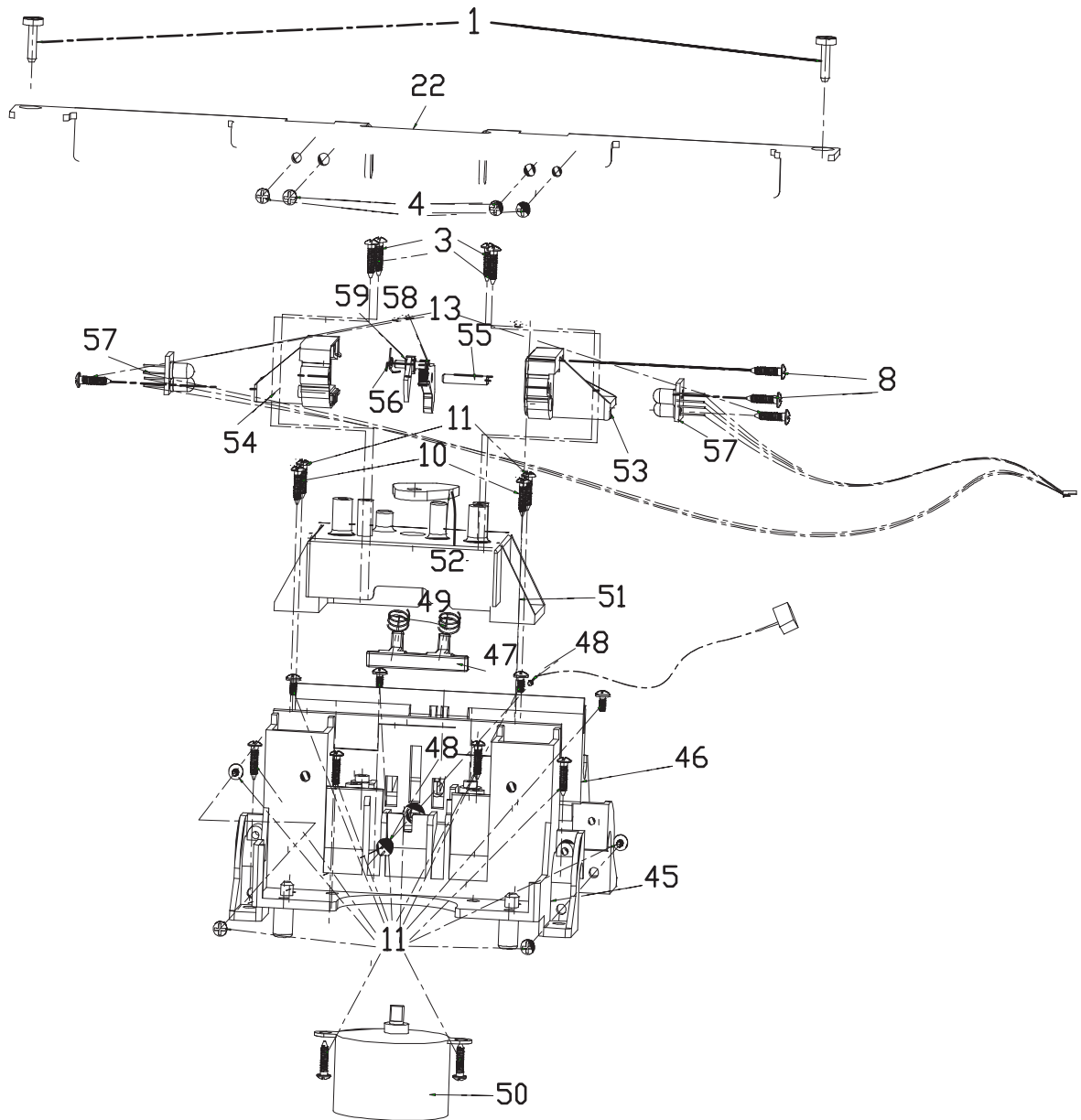
REXEL 1819 PARTS LIST



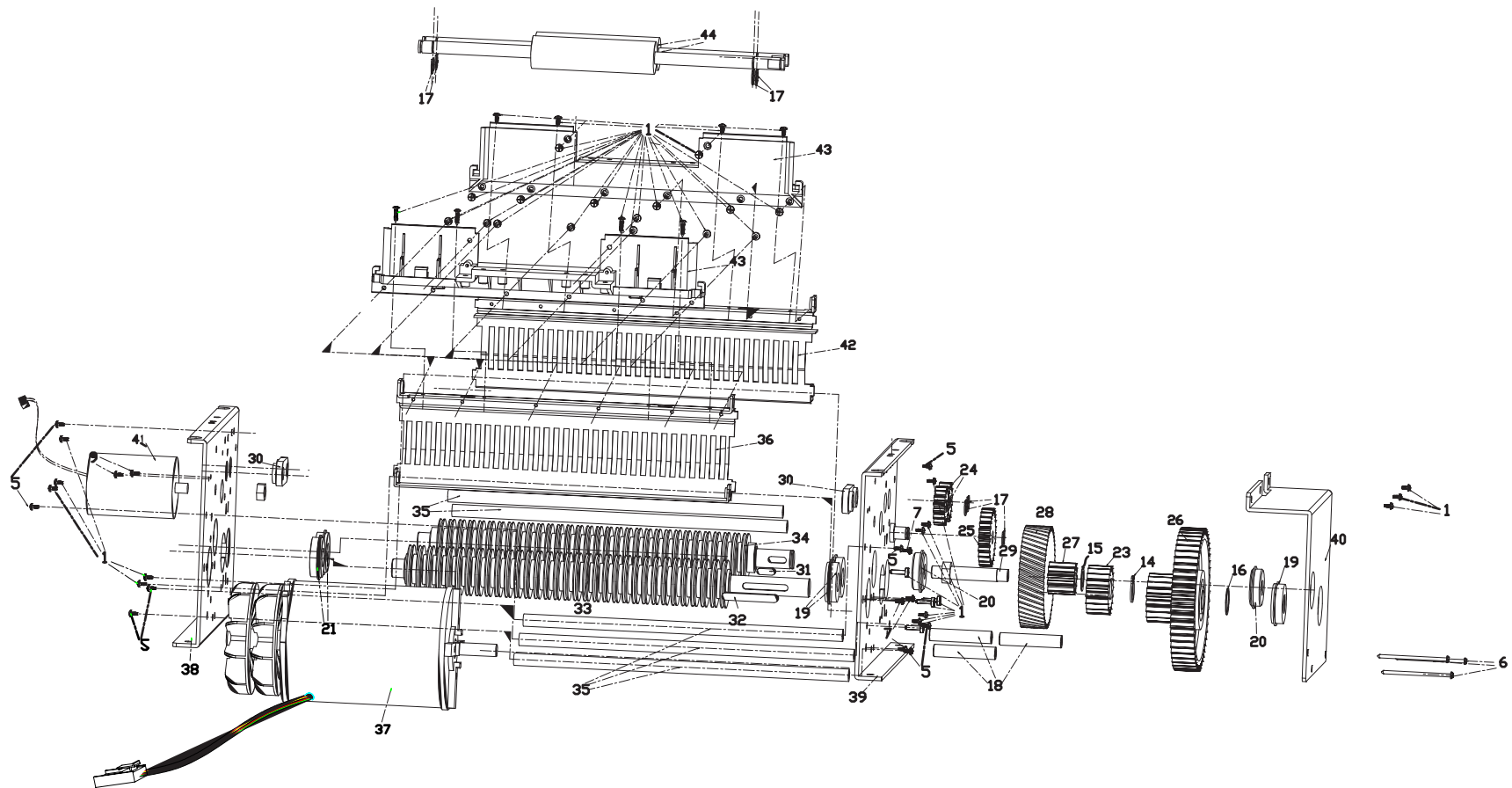
GBC IS AN ACCO BRANDS COMPANY



| | PART NUMBER | DESCRIPTION |
|----|--------------|---------------------------|
| 1 | 101021600100 | FEED CHUTE |
| 2 | 101019800100 | CD FLAP A |
| 3 | 101019900100 | CD FLAP B |
| 4 | 101012000100 | CD FLAP C |
| 5 | 171000061000 | PLAT AL PRINT G |
| 6 | 101022300100 | SW. KNOB C |
| 7 | 151301039110 | SCREW M3 10MM |
| 8 | 181000000280 | NUT M3 |
| 9 | 171000060000 | PLAT AL BACK G |
| 10 | 101022200100 | SW. KNOB B |
| 11 | 155300611111 | M3 6MM |
| 12 | 101022100100 | SW. KNOB A |
| 13 | 152300627110 | M3 6MM |
| 14 | 910200037300 | PCBA |
| 15 | 911100002680 | LED PCB |
| 16 | 152300821110 | M3 8MM |
| 17 | 101021400100 | ILLUMINATION PANEL |
| 18 | 172000269030 | NAME PLATE (RDX1970) 1619 |
| | 172000269020 | NAME PLATE (RDS2270) 1819 |
| 19 | 911100002670 | ILLUM LED PCB |
| 20 | 101021500100 | ILLUMINATION PANEL HOLDER |
| 21 | 101021200100 | TOP HEADER COVER |
| 22 | 155401011110 | M4 10MM |
| 23 | 910000139590 | POWER CORD RECEPTACLE |
| 24 | 640100068400 | POWER CORD |

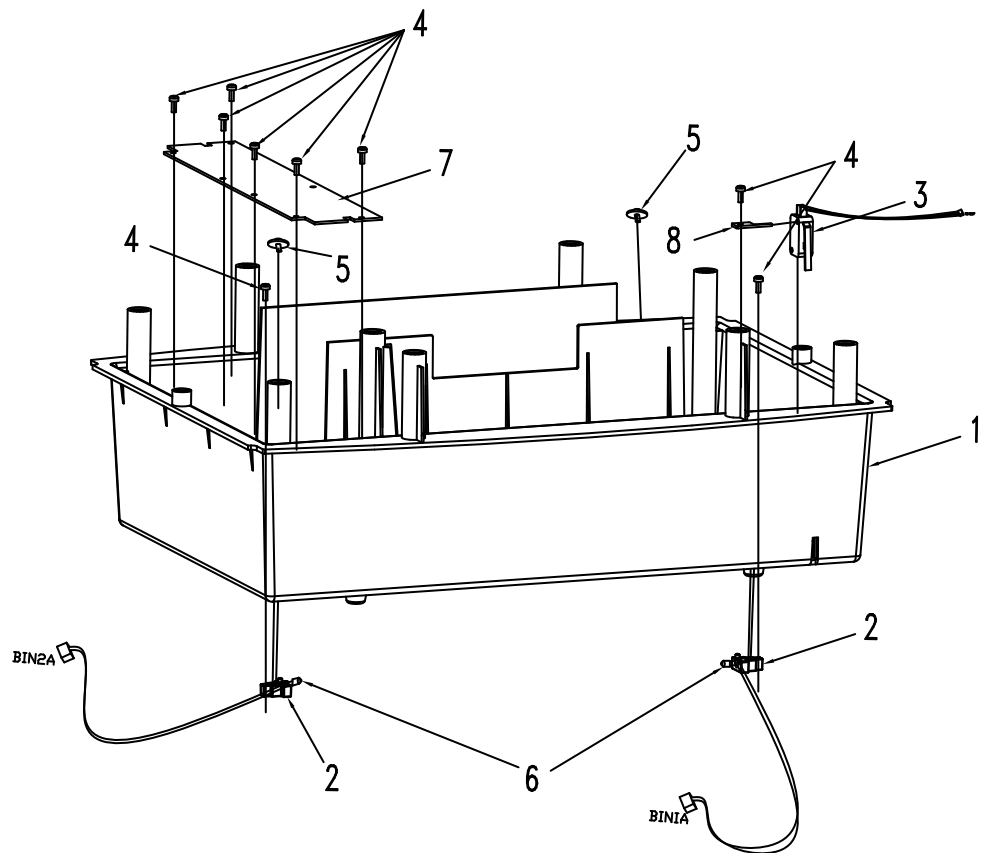


| | PART NUMBER | DESCRIPTION |
|----|--------------|------------------|
| 1 | 151501231110 | SCREW M5 X 12 |
| 3 | 151300811116 | SCREW M3 X 6 |
| 4 | 151401211113 | SCREW M4 12MM |
| 8 | 152301511110 | SCREW #3 15MM |
| 10 | 152401017114 | SCREW M4 10MM |
| 11 | 155401011110 | SCREW M4 10MM |
| 13 | 152300627110 | SCREW #3 6MM |
| 22 | 130582200100 | ANTI-JAM PLATE |
| 45 | 130563400100 | ANTI-JAM HOLDER |
| 46 | 130563500100 | ANTI-JAM HOLDER |
| 47 | 130562000100 | PRONG CROSS CUT |
| 48 | 911100001020 | AUTO EYES |
| 49 | 130033900100 | SPRING B |
| 50 | 660000003040 | TYK 40 120V |
| 51 | 10101930010A | SYNCHRONIC MOTOR |
| 52 | 130582400100 | CAM |
| 53 | 101020200100 | ANTI-JAM MODULE |
| 54 | 101020100100 | ANTI-JAM MODULE |
| 55 | 130576200100 | PIN |
| 56 | 130574500100 | SPRING FOR ANTI |
| 57 | 911100001050 | ANTI-JAM EYES |
| 58 | 130562800100 | ANTI-JAM TRIGGER |
| 59 | 101020300100 | ANTI-JAM GEAR |

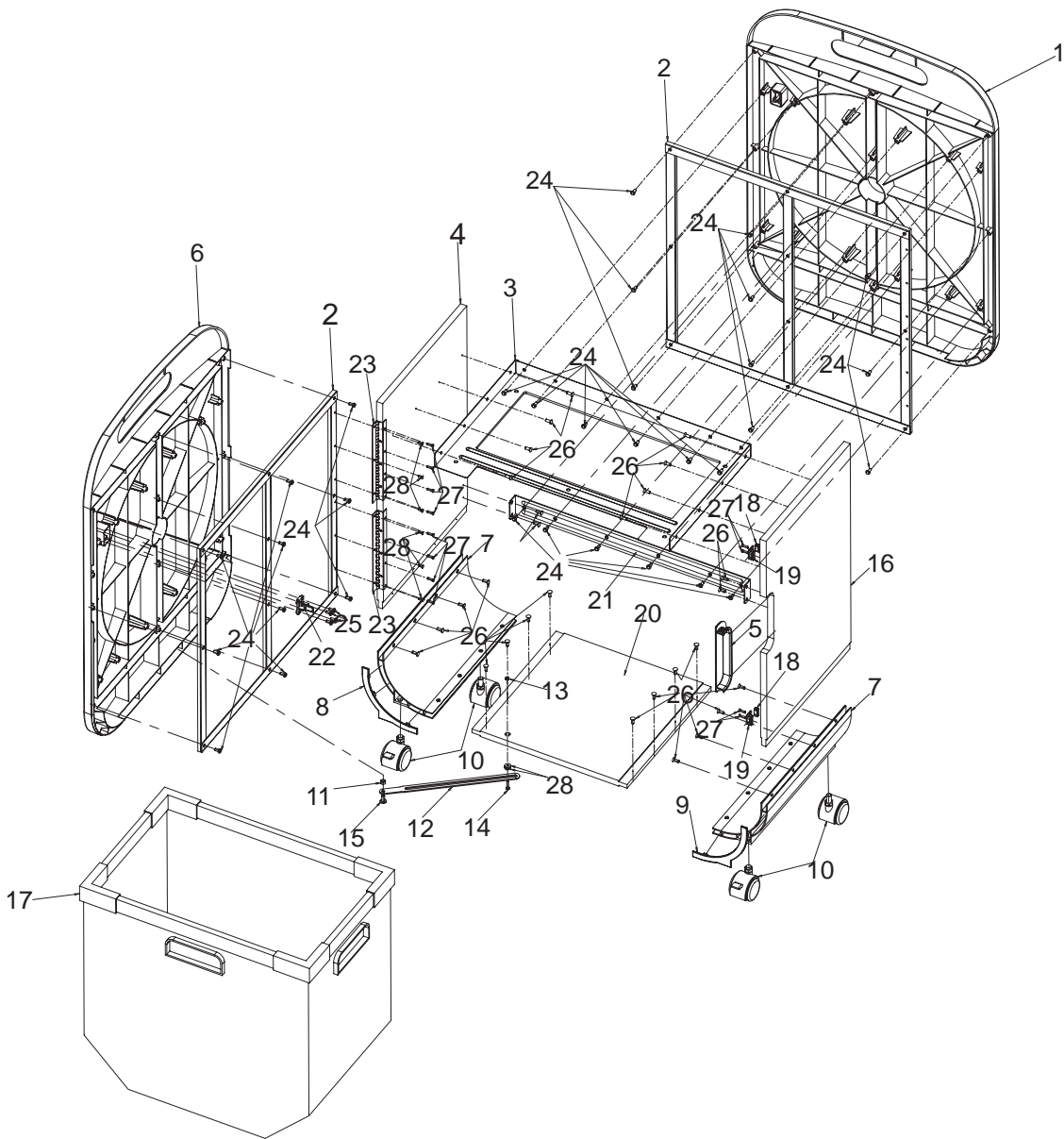


| | PART NUMBER | DESCRIPTION |
|----|--------------|----------------|
| 1 | 151501231110 | SCREW M5 X 12 |
| 4 | 151401211113 | SCREW M4 12MM |
| 5 | 151501031110 | SCREW M5 10MM |
| 6 | 151505715110 | SCREW M5 57MM |
| 7 | 151601011110 | SCREW M6 * 10 |
| 14 | 130165000100 | #15 C RING |
| 15 | 181200000460 | WASHER SPACER |
| 16 | 180700000170 | PLASTIC SPACER |
| 17 | 130036100100 | #7 E RING |
| 18 | 130574900100 | SUPPORT BOSS |
| 19 | 130423000100 | 6002 BEARING |
| 20 | 130381300100 | BEARING 6200 |
| 21 | 130381300100 | BEARING 6200 |
| 23 | 130546500100 | GEAR C |
| 24 | 130564900100 | GEAR 16T |
| 25 | 130565000100 | GEAR 25T |
| 26 | 100996800100 | GEAR B |

| | PART NUMBER | DESCRIPTION |
|----|--------------|------------------|
| 27 | 130546600100 | GEAR B-2 (19T) |
| 28 | 100807120200 | GEAR A-1 |
| 29 | 13042470010A | GEAR SHAFT |
| 30 | 130564600100 | BUSHING |
| 31 | 130381100100 | SLIDING KEY B |
| 32 | 130381000100 | SLIDING KEY A |
| 33 | 130563200100 | KNIFE A |
| 34 | 130563300100 | KNIFE B |
| 35 | 130374700100 | SUPPORT BOSS |
| 36 | 13054890010A | PAPER GUIDE A |
| 37 | 660000003130 | AC 9420 MTR 120V |
| 38 | 130564000100 | PLATE B |
| 39 | 130563900100 | PLATE A |
| 40 | 130564100100 | PLATE C |
| 42 | 13054910010A | PAPER GUIDE B |
| 43 | 101023700100 | PAPER ENTRY |
| 44 | 180200009210 | ROLLER |



| ITEM | PART NO. | DESCRIPTION | 115V QTY |
|------|---------------|---------------------|----------|
| 1 | 10102130010B | BOTTOM HEADER COVER | 1 |
| 2 | 100719100100 | BIN-FULL-HOLDER | 2 |
| 3 | 911100000640 | F SAFETY SW ASS' YS | 1 |
| 4 | 152300821110 | M3 8MM | 9 |
| 5 | 155300611111 | M3 6MM | 2 |
| 6 | 911100001040 | BINFULL EYES S | 1 |
| 7 | 910200037240A | MAIN BOARD ASSY G | 1 |
| 8 | 130073100100 | SWITCH-FIXER | 1 |



| | PART NUMBER | DESCRIPTION |
|----|--------------|---------------------|
| 1 | 101023900100 | REAR DOOR PANEL |
| 2 | 130566300100 | DOOR FRAME SHORTER |
| 3 | 130563600100 | METAL SUPPORT A |
| 4 | 1804000022A | WOOD STAND |
| 5 | 101022400100 | HANDLE COVER |
| 6 | 101023800100 | DOOR PANEL FRONT S |
| 7 | 13056380010A | AL PORTRUSION FRAME |
| 8 | 101022600100 | FRAME COVER -L |
| 9 | 101022500100 | FRAME COVER -R |
| 10 | 911100004200 | CASTER |
| 11 | 181000000290 | NUT M5 |
| 12 | 130564800100 | DOOR TIE |
| 13 | 181000000280 | NUT M3 |
| 14 | 151301519110 | DOOR TIE |
| 15 | 151501326110 | SCREW M5 |
| 16 | 18040000023A | WOOD STAND |
| 17 | 911100001030 | BIN SHORTER |
| 18 | 180000554660 | MAGNET |
| 19 | 101023600100 | MAGNET HOUSING |
| 20 | 18040000019A | WOOD BASE |
| 21 | 130563700100 | METAL SUPPORT B |
| 22 | 10102350010A | PIN (ON DOOR) |
| 23 | 130565400100 | HINGE SMALL |
| 24 | 155401039110 | M4 SCREW |
| 25 | 155401011110 | M4 10MM SCREW |
| 26 | 154401139131 | SCREW M4 12MM |
| 27 | 154301239131 | SCREW M3 12MM |
| 28 | 151300839110 | M3 8MM SCREW |