



1036S-2 PARTS LIST

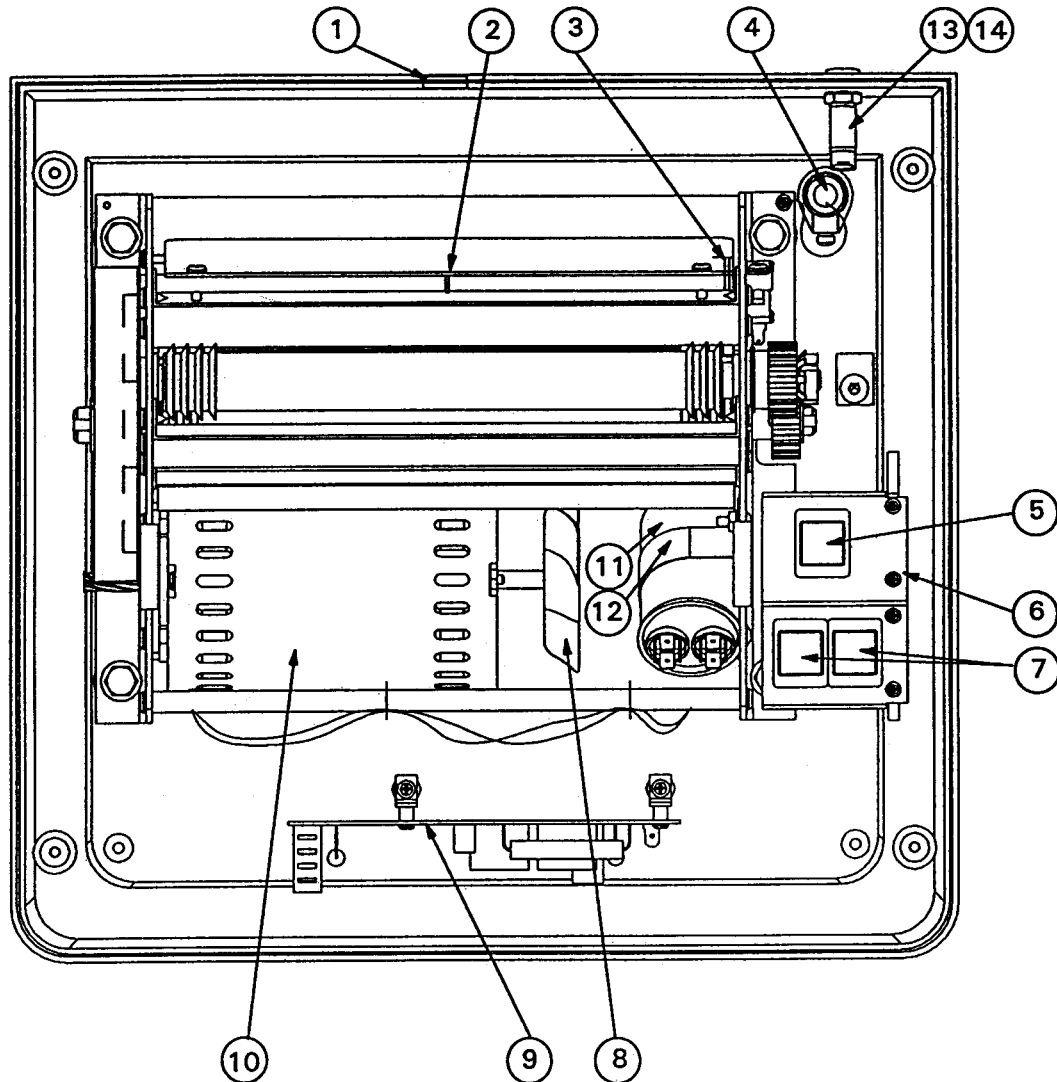
Revised 04/18/06



GBC IS AN ACCO BRANDS COMPANY

8.0 1036S-2 PARTS LIST

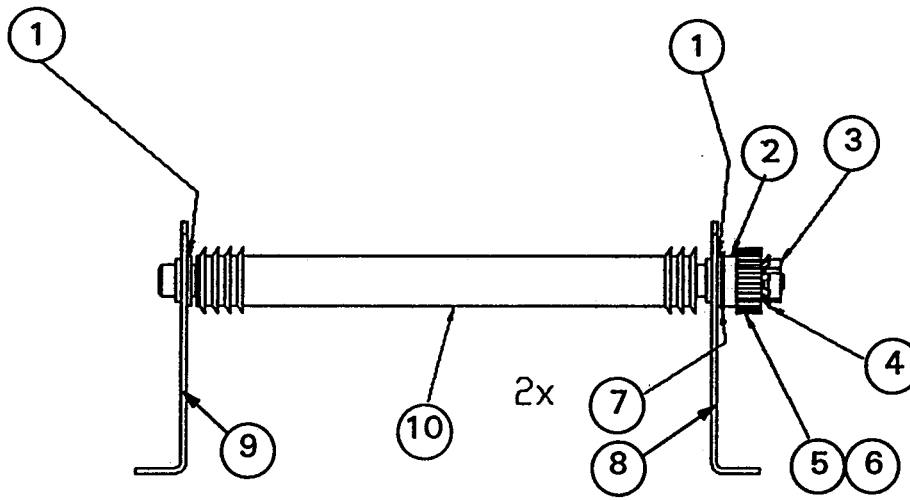
Figure 8.1



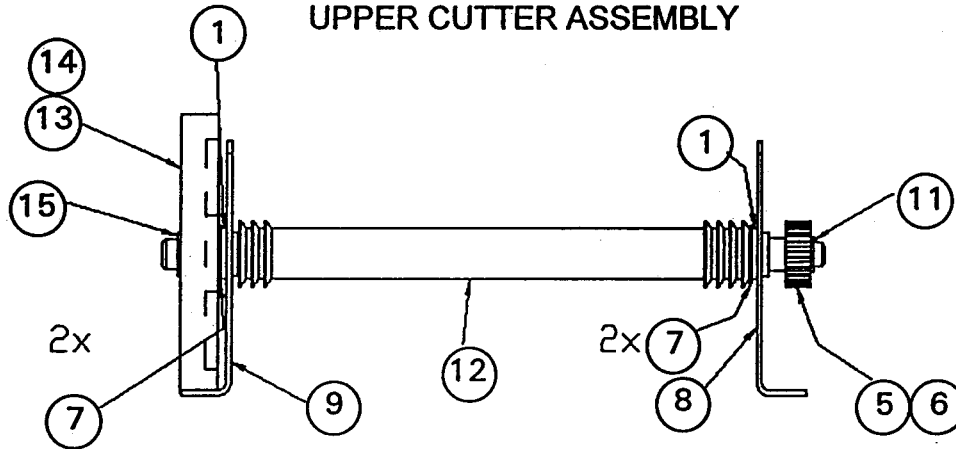
ITEM	PART No.	DESCRIPTION	QTY
1	7500492	PLASTIC CHANNEL	1
2	1963701	O'-RING 1/4" I. D. X 1/16W	1
3	6178016	TORSION SPRING	1
4	1952414	STRAIN RELIEF	1
5	7500044	SWITCH, ON	1
6	7500037	SWITCH BRACKET	1
7	7500033	SWITCH, OFF/REVERSE	2
8	1132555	FAN BLADE	1
9	7500414	PC. BOARD ASSY	1
10	6208044	MOTOR 1/4HP	1
11	6205006	CAPACITOR 20uF	1
12	1145205	STRAP, CAPACITOR	1
13	-REF-	FUSE HOLDER 100V Version	1
14	-REF-	FUSE 4 AMP 100V Version	1

8.0 1036S-2 PARTS LIST

Figure 8.2



UPPER CUTTER ASSEMBLY



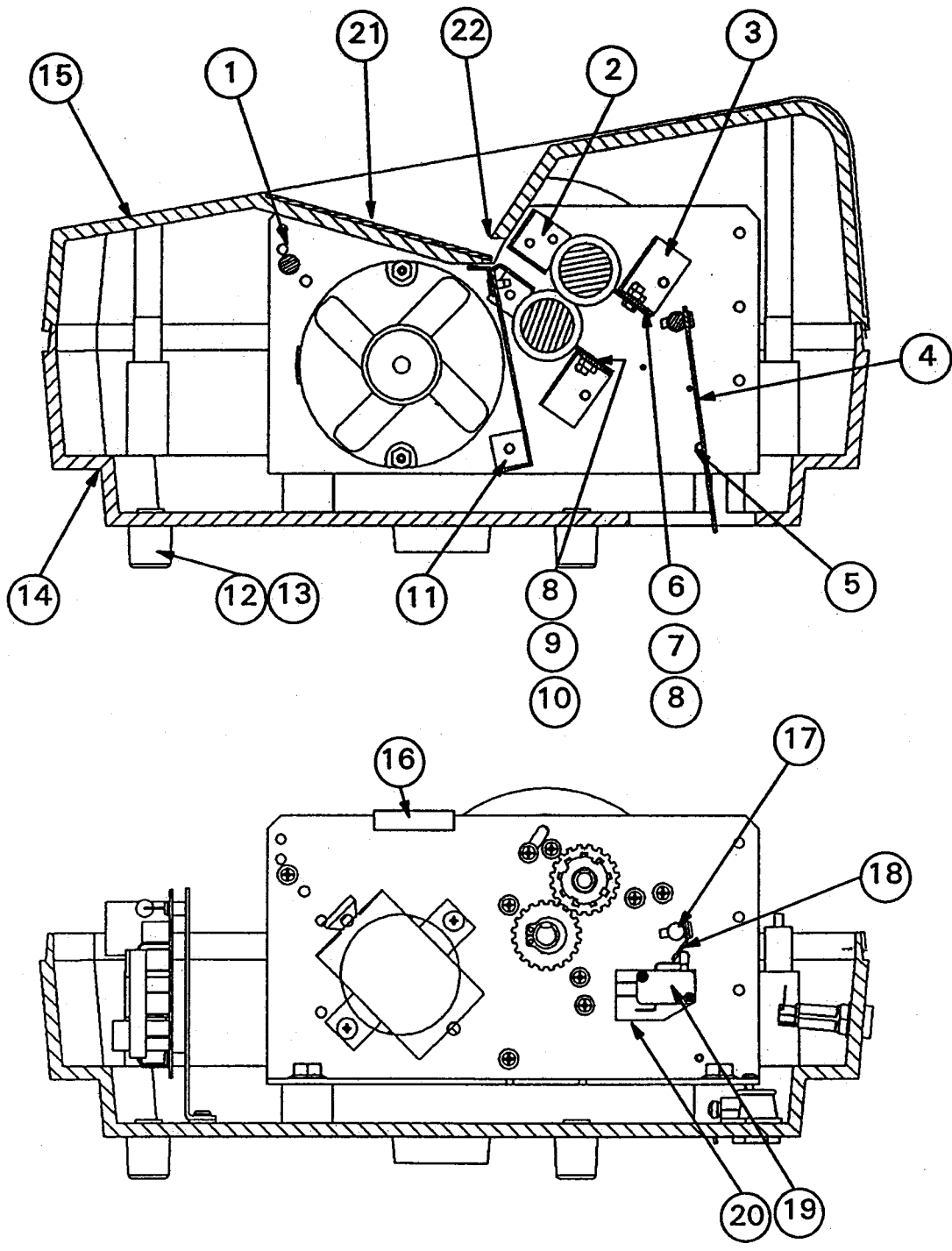
LOWER CUTTER ASSEMBLY

ITEM	PART No.	DESCRIPTION	QTY
1	1952005	BEARING, PLASTIC GEAR	4
2	1145928	SPACER	1
3	1130993	LOCKNUT	1
4	1130994	LOCKWASHER	1
5	1132547	GEAR, CUTTER	2
6	1852817	KEY 3/16 SQUARE X 3/8 LONG	2
7	1925215	WASHER, PLASTIC	6
8	7500046	TAIL STOCK	1
9	7500045	HEADSTOCK	1
10	1146887	UPPER CUTTER	1
11	1931604	GRIPRING 1/2 DIA.	1
12	1146886	LOWER CUTTER	1
* 13	6180036	HELICAL GEAR, CUTTER	1
14	1145889	KEY, ROUNDED	2
15	1932508	RETAINING RING	1

* YOU MUST ALSO ORDER:
 1952005 - SHORT BEARING
 7500136 - MOTOR SPACER PLATE

8.0 1036S-2 PARTS LIST

Figure 8.3



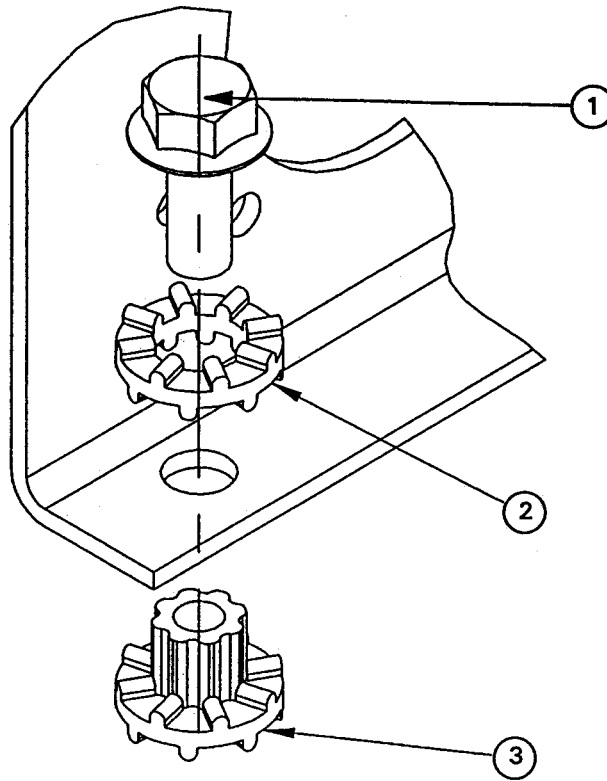
8.0 1036S-2 PARTS LIST

Figure 8.3

ITEM	PART No.	DESCRIPTION	QTY
1	7500036	CROSS BAR, UPPER	1
2	1132554	PAPER GUIDE, UPPER	1
3	1132543	SUPPORT STRIPPER	2
4	1146792	GUARD	1
5	1930301	PLASTIC FASTENER	1
6	1132538	STRIPPER, UPPER	1
7	1907301	SCREW 6-32 X 3/8 SLOT HEX HD	2
8	1926801	NUT KEPS #6-32	4
9	1132539	STRIPPER, LOWER	1
10	1902606	SCREW 6-32 X 3/8 FLATHEAD	2
11	7500038	LOWER PAPER GUIDE	1
12	7500050	RUBBER FOOT	4
13	1902827	SCREW 10-32 X 3/4 PAN HEAD	4
14	7500032	BOTTOM SHELL	1
15	7500232	TOP SHELL	1
16	7500493	DAMPENER	2
17	1146793	BAR GUARD	1
18	7500047	ACTUATOR FLAP	1
19	1131147	SNAP SWITCH	1
20	1122005	INSULATION, SNAP SWITCH	1
21	-Ref-	PLASTIC PLATE, THROAT (100V)	1
22	-Ref-	SHIELD, UPPER (100V)	1

8.0 1036S-2 PARTS LIST

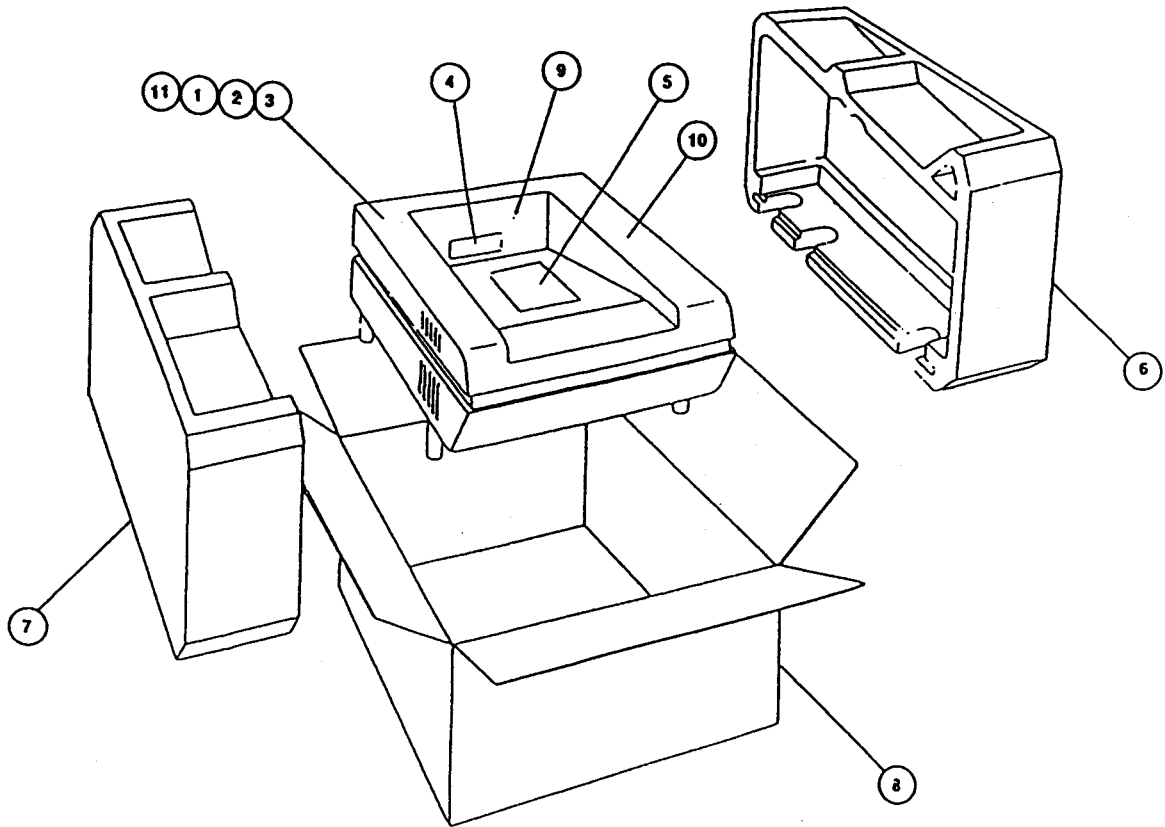
Figure 8.4



ITEM	PART No.	DESCRIPTION	QTY
1	1903202	SCREW 5/16-18 X 1.5 FLANGE NO.	4
2	7500489	RING, ISODAMP	4
3	7500490	BUSHING, ISODAMP	4

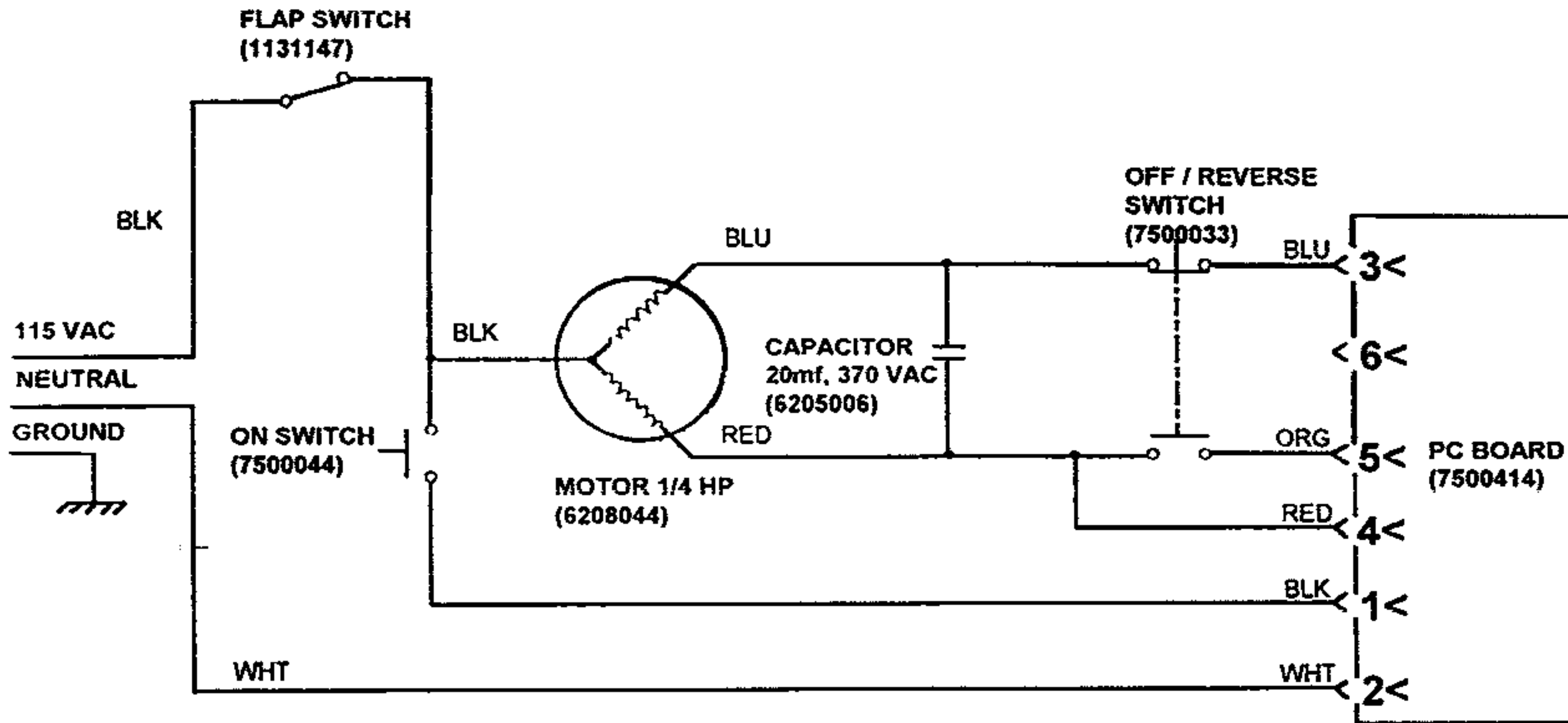
8.0 1036S-2 PARTS LIST

Figure 8.4



ITEM	PART NO.	DESCRIPTION	QTY.
1	7500202	SHREDDER COMPLETE	1
2	6009007	WARNING LABEL	1
3	6009000	CAUTION LABEL	1
4	6009006	WARNING LABEL (CENTER)	1
5	6000000	INSTRUCTION MANUAL	1
6	6006000	RIGHT END	1
7	6006001	LEFT END CAP	1
8	6005001	CARTON, SHREDDER	1
9	1954616	TOUCH-UP PAINT (WARM WHITE 9 oz.)	1
10	1954607	TOUCH-UP PAINT (PEARL WHITE 9 oz.)	1
11	6009041	LABEL INSTABILITY	1

1036S-2 SCHEMATIC AND VOLTAGE/RESISTANCE CHART



	1	2	3	4	5	6
POWER APPLIED (NO SWITCH PRESSED)	3.00 VAC	0.00 VAC	115.00 VAC	115.00 VAC	0.00 VAC	NOT USED
ON SWITCH PRESSED & HELD DOWN	115.00 VAC	0.00 VAC	0.00 VAC	220.00 VAC	220.00 VAC	NOT USED
ON SWITCH PRESSED & RELEASED	2.50 VAC	0.00 VAC	0.00 VAC	0.00 VAC	0.00 VAC	NOT USED
OFF SWITCH PRESSED & HELD DOWN	6.00 VAC	0.00 VAC	0.00 VAC	220.00 VAC	220.00 VAC	NOT USED

ALL READINGS ARE TAKEN USING THE NEUTRAL LINE (NOT GROUND)

MOTOR RESISTANCE READINGS: BLK TO BLU = 5 OHMS +/- 1 OHM
 BLK TO RED = 8 OHMS +/- 1 OHM
 BLU TO RED = 13 OHMS +/- 2 OHMS

